

The Cleobury Clarion



SERVING CLEOBURY COUNTRY

April 2017

A4117 ROAD CLOSURE

The work on the A4117 from Cleobury through to the county boundary on Lem Hill was all done by March 17th. Mouchel, who some may remember did the Town Centre Enhancement Scheme did the job on time.

By working from 8.00pm until 6.00am they kept disruption to a minimum. And some strangers found new byeways as they followed the diversion through Clows Top and Neen Sollars to get into Cleobury late at night!

A CLARION SCOOP

It's with great pride that the Clarion announces it has scooped the motoring press with news of a groundbreaking all electric bus soon to be tested on the hills and hollows of our local 2L route. Yes, it seems that Diamond have been chosen to put what could be a truly revolutionary vehicle to a serious test before it is launched on the open market. We naturally wait to see it.

It's the work of our 'On The Buses' man, Steve Todd, who reveals details in this issue, that comes to you on April 1st.

CHARLIE TAKES ON THE CHANNEL



Charlotte Manley in serious training for the Big Swim.

"I was informed that more people have climbed Mount Everest than have successfully swum the English Channel. This encourages me on days I need motivation to train." The words of a young woman with more than her fair share of grit and determination.

Charlotte Manley is heading for her 30th birthday and wanted to do something special to celebrate the day. A recent convert to open water swimming, she heard about the Sea Eagles planning a group swim across the Channel to raise money for the Aspire charity that helps people with

spinal cord injuries. Each member of the team takes their turn and swims for one hour. No excuses if you can't; if any member can't do their turn the whole effort is declared invalid.

So Charlotte's in training, when the water temperature is about two degrees. At the time of the Big Swim on June 30th the normal temperature in the Channel is about 15 degrees, so she shouldn't find that a problem.

She has to prove that she can swim for two hours in open water before getting the final OK, but if determination counts for anything she'll be there.

You can help Charlotte with her fund raising by sponsoring her at www.justgiving.com/fundraising/Charlotte-Manley1. Just remember that every eight hours someone in the UK sustains a spinal cord injury and is told they may never walk again. Those are the people Aspire helps, with stuff like accessible housing, grants, IT facilities and advice. It's a cause that deserves support. And Charlotte has a Facebook page: Charley Vs the Channel.

A brave lady.



Charity Curry Night

Friday 7th April from 7.30pm
At The Spice Empire,
Cleobury Mortimer, DY14 8DG

£15 including authentic Indian Buffet (vegetarian option available)

Featuring special guest local singer: Aaron Booton

Places are limited, to book, please call **01299 270419**

In aid of Onside's charity work supporting local adults with mental ill health, dementia, learning disabilities, physical disabilities & who face disadvantage.

CLEOBURY FUNERAL DIRECTORS

Incorporating Wyre Forest Funeral Service

'The Local Family Funeral Company You Can Trust At Your Time Of Need'



UNDER THE PERSONAL SUPERVISION OF ADRIAN SATTERLY

Our reputation has been built on trust and professionalism. All our attention is concentrated on satisfying the needs of our clients and their families. Your neighbourhood is our neighbourhood and as Cleobury's only resident Funeral Director, with over 15 years' experience in arranging and directing funerals, we take personal pride in serving you well.

* Pre-Payment Funeral Plans
* Home Visits Available

* Horse Drawn Funerals
* 24-Hour Service

* Monumental Masonry
* Catering & Venue Arranged



'It is a rare privilege to be a Funeral Director, to stand in a sensitive position at a crucial time, in the midst of your family, knowing that the quality of our service, knowledge and reputation will help you through this difficult time in your lives'

9, TALBOT SQUARE, CLEOBURY MORTIMER

www.cleoburyfuneraldirectors.co.uk

TELEPHONE: 01299 540541 or 07450 764214

'Serving the local communities with dignity & understanding'

The Cleobury Clarion, April 2017
Volume Fifteen - Edition One



*A real family business, growing fast because they care.
See Page 5.*



*What is that peeping around the corner? The future of motoring.
See Page 17.*



*Tranquillity in name and style.
In Business Page 55.*

And On Other Pages....

- | | |
|---------------------------------|-------------------------------------|
| 7 - A Quiet Time | 32 - The Social Calendar - Part One |
| 9 - Cleobury Country AGM | 33 - The Social Calendar - Part Two |
| 11 - Cleobury Swift Watch | 35 - Clarion Coppers |
| 13 - From the Bandroom | 37 - On the Buses |
| 15 - The Clarion Jobs Page | 39 - Here to Help You |
| 19 - Severn Edge Vets | 41 - April in the Wyre Forest |
| 21 - Quality Up On the Hill | 45 - Michael Turner |
| 23 - Cleobury Mortimer Lectures | 49 - World War One Heroes |
| 25 - The Aspire Centre | 57 - April Clarion Exclusive! |
| 27 - Philip Dunne MP | 59 - Music Fills the Church |
| 29 - Our Community Celebration | 61 - Early Morning Birdsong |
| 31 - Cleobury Patients' Voice | 63 - Local Information |

**The Clarion is on the web
from the 4th of every month.
www.cleoburyclarion.co.uk
All 60 pages and the adverts**



RED HARE SALON

45 HIGH STREET
CLEOBURY MORTIMER
WWW.REDHARESALON.CO.UK

01299 270702

YOUR
HAIR
IS
OUR
BEST
ADVERT

Agricultural Team Legal specialists in all things rural

- Planning, Land Registration and Development
- Buying and Selling Farms and Rural Property
- Sporting and Fishing Rights
- Restrictive Covenants
- Farming Dispute Resolution
- Business Diversification
- Tenancy Agreements
- Tax Matters for the Farming Community



www.painters-solicitors.co.uk

*Serving the Wyre Forest
for over 60 Years*



For more information contact:
Nicholas Hughes on 01562 822295 or Wendy Beaumont on 01299 822033

ANOTHER LOCAL SUCCESS

I have written before about the standard of care that TLC Care at Home provide. On that very sad occasion their care for my wife in her final days was quite amazing, one of the girls bringing her old hairdresser's kit one evening and staying late to give the lift that any woman feels with her hair freshly permed.

So it was intriguing to hear that they've moved offices from home in Neen Savage to a suite at number 14 in Bewdley's Load Street. Jacqui Jackson is still the responsible manager, not available on the first day we called because a staff illness meant she was out looking after a client. Peter Jackson filled me in.

"We'd reached the point where the business was taking up three rooms in the house, and we had to look around for proper offices," he explained. They certainly need the space, with 47 carers on the books and training needed to keep all skills up to date. The growth since the start four years ago is very impressive, from a handful of carers to 47 and their area of operation spreading ever wider.

It's a real family firm, that got started because daughter Tracy was working as a carer and came home upset because someone she was looking after was told that she would have to pay if a carer came to help her go to the toilet at night. If she couldn't pay, she'd have to use

her pad, wouldn't she? That's not the way TLC work, because it's all about care. That was the start, with Jacqui, Peter and Tracy all directors, determined to do the job well.



It's a real family firm and here are the three directors to prove it: Peter, Jacqui and daughter Tracy.

The caring industry has not had a good press in recent months and when we called TLC were waiting to hear the results of a recent Care Quality Commission inspection. This is the body responsible for all carers being up to standard and their inspection looks at five categories. One of these asks "Is the service caring?" and TLC got a very rare 'Outstanding' there, one of only three carers in the whole of Shropshire and Worcestershire to get that grade. In all the other categories they scored a 'Good' rating. "We're all over the moon to be recognised in this way," beamed Peter.

We've talked to Jacqui since, who's rightly very proud of this achievement. She told about a

carer staying late so that a client could watch the First Night of the Proms and then be put to bed. And the time they cooked a proper Christmas dinner and delivered one to each client and partner if they had one. No charge, just good care. And they have a very precious certificate to prove it.

THE CHILDE ENDOWMENT FUND

Students residing in the parishes of Cleobury Mortimer, Neen Sollars, Milson, Coreley, Hopton Wafers, Farlow, Wheathill, Aston Botteril, Stottesdon, Kinlet and Neen Savage are invited by the Trustees to make applications to the above fund for financial assistance to help further their studies.

Details and application forms can be obtained from Lloyds Bank, Cleobury Mortimer, Lacon Childe School or The Reverend Justin Parker, Clerk to the Trustees of the Fund at Adam House, Birmingham Road, Kidderminster DY10 2SA. The closing date is June 24th.

WRITING GROUP

It started as the Creative Writing Group when Vicki Alexander was our librarian; today it has a less ambitious title. Second Monday of the month, at 6.30 in the library, a small but friendly group meet.

Our aim this month is a maximum of 1,000 words including passionate, sideboard, equilibrium and artistry. On the 10th at 6.30 we'll see how many manage the task.

The Clarion is on the worldwide web, from the 4th of every month

www.cleoburyclarion.co.uk

We have readers in Hong Kong, New Zealand and America.



CM BESPOKE CARE

 Care Quality
Commission
Registered

 S P I C
Shropshire Partners In Care

Personal, Nursing and Domestic care.
Tailored to your needs.

Call for a free consultation

Tel: 01746 718816
Mobile: 07943834132

www.cmbcare.co.uk
www.facebook.com/cmbcare
email: cmbespokecare@btconnect.com



DRY CLEANING & LAUNDRY SERVICE
20 HIGH STREET, CLEOBURY MORTIMER
01299 270571
HOUSEHOLD & COMMERCIAL WORK WELCOME
FULLY ATTENDED, OPEN 7 DAYS

Self Service ~ Full Service Wash/ Dry/ Fold/ Ironing ~ Large Machine for Big Items
Service Washing for Duvets/ Blankets/ Sleeping Bags ~ Team Sports Kit Laundry Service
Equestrian Rug Cleaning ~ Laundry Service for Pet Items
Professional Shirt Service ~ Nikwax Wash & Proof for Outdoor Clothing

.... the place to air your dirty laundry!

TDC CARPENTRY SERVICES

- Fully insured qualified professional
- Excellent workmanship and quality customer care
- From hanging doors, fitting kitchens to bespoke projects

Tim Clare - 01299 270568 / 07890 519980

John Brazier & Co

Accountants & Business Advisors

Accounts – Company, Partnership and Sole Trader
Tax Returns – Corporation Tax and Personal
VAT - Returns and advice
Payroll Service including RTI

For a personal and
professional service

Contact John Brazier or Sarah Morgan to discuss your requirements on 01299 271473 or email at info@johnbrazierco.co.uk. Alternatively, you can arrange a meeting at 53, High Street, Cleobury Mortimer, Worcestershire DY14 8DQ

01299 271 473

THANK YOU

I would like to thank my family and friends for Get Well cards and their best wishes for my stay in Hereford Hospital. It is the best hospital I have been in; I had a week there. I am on the mend now.

God bless you all.

Sheila Whitefoot

CLOWS TOP GARDENING CLUB

April is the most exciting month of the year because we are well and truly into spring. National Gardening week is 10 - 16th April and along with the Easter Holidays it's a good time to crack on with some seasonal jobs. No garden? No problem. Pots or containers can give lots of variation with shape and colour, even Fruit and Veg can be grown if you choose the right variety. Visit garden centres and nurseries every few weeks or once a month, to get a range of plants with staggered flowering and scent to give year-round interest. The country lanes are now bursting with wild flowers. Instead of driving by, stop, go for a walk and enjoy the sight and scent of these beauties.

Our next meeting will be on Wednesday April 26th, when the speaker for the evening will be

Bob Oliver on 'The A-Z of Vegetable Growing'. Admission Fee: members £2, non-members £4. Free Refreshments. Magazine swap. Flower of the Month Competition.

Further Details: Marion Wilson 01299 270475. Email: clowstopdistrictgardeningclub@hotmail.co.uk.

Pauline Bowen

A QUIET TIME

Last year the Parish Church launched their Wholeness Service for Lent. It was a simple concept, welcoming people into the church to sit, quietly contemplate and draw strength from a communal feeling of peace. It worked well and this year will be on Thursday, April 6th, from 7.00pm.

It's described as "A quiet service of Healing and Wholeness for Lent, with particular reflection on Forgiveness." Everyone is welcome, whatever your belief; it is simply a time to reflect, to pray if you wish and possibly share a moment of peace with others. A quiet time in fact.

TO WHOM IT MAY CONCERN

Is this irresponsible dog owner you, or someone you know? Dog mess has been rather less of

a nuisance in recent months, but we hear reports of a problem on the Catherton Road to Love Lane footpath, where a lot of children walk, and then this very pointed message came in:

To whom it may concern:
Please do not allow your dog to foul the drive, garden and path in the front and side of Cinema Court, Childe Road.

It seems that someone's on the lookout, so you've been warned.

CORRECTION

Roger Gittins writes:

Could you please insert in the Clarion a correction of last month's "News from Coco" on page 39? It's not the Bells Sunday Darts and Dominoes League that raises money for the charities. It is the Sunday Charity League to be thanked which is only supported by the landlords and customers of the Social Club, Stable Tavern, Bell Inn and Old Lion.

Thank you.

Roger Gittins

SILLY OLD BITS

Did you ever notice that the Roman numerals for 40 are XL?

Some people try to turn back their life's odometers. Not me, I want people to know why I look this way; I've travelled a long, long way and some of the roads weren't surfaced.

Clows Top Garage
Clows Top
Tenbury Road
Kidderminster
Worcestershire

Poppys Garden Benches

Telephone: 01299 832227



Quality Handmade Heavy Duty
Picnic Benches



Mobile: 07812559530



From a choice of either strong solid timber or beautiful Welsh cedar wood. These handcrafted benches are a must have.

Unlike flat pack benches, these are quality constructed with approximately 2 Inch thick solid wood.

Due to the sheer size and weight of these benches we do offer delivery. For more information on this, or any general enquires please contact us.



Email: D_Tramontana@hotmail.co.uk

Website: www.poppysgardenbenches.com

Professional. Affordable. Local.



Electrical Installations

No matter the size, we can gladly undertake all Domestic, Commercial and Industrial installations you require.

A family run business, with over 25 years industry experience.

From period properties to agricultural solutions, we provide a professional service every time. We also do call outs and emergency work.

Renewable Energy

Protect yourself from rising energy bills by considering renewable energy.

Solar PV is the most accessible way you can save energy by producing electricity from the sun. Earn a tax free income from the electricity your system produces.

Speak to us about how renewable energy can benefit you or your business.

Whatever your query, give us a call.

T: 07971 096267 / 08450 564173

W: www.awe-services.co.uk

Two Staks, Eagle Lane, Cleobury Mortimer, Worcs. DY14 8RA



THE SOROPTIMISTS

As in previous March supper meetings we marked International Water Day by changing wine into water, paying for wine but had water instead. Everybody was asked to bring a bottle which would be disguised for a Secret Bottle Raffle.

A reminder to all bridge players: our annual Charity Bridge Drive in aid of the Alzheimer's Society will be on Wednesday April 26th, at the Parish Rooms, Belbroughton Road, Blakedown DY10 3JG. 10.0 am for a prompt start at 10.30 until 4.00. £12 per player, including lunch. Book your place with Sue Merrill on 01562-700078, 07831487648 or suemerrill@btinternet.com

We start our next business year on 1st April with our annual Reflection Day and Thursday 6th will see the first Business meeting when President Denise Carson will hand over the chain of office to Hilary Thompson.

Soroptimist International is open to all women from the age of 18. For more details contact 01299 266101 or email: kidderminstersorop@gmail.com

A VERY UNUSUAL CHOIR CONCERT

I live in Cleobury but belong to a choir based in Leicestershire called the Harborough Singers. Crazy I know, but I love it because it gives me a chance to sing in places I never would have dreamed possible. Like St. Paul's Cathedral, the Albert Hall and ... a Polish Saltmine! I also get to appear alongside brilliant professionals, both musical and otherwise. I sang with the Queen of Baking herself, Mary Berry, at Christmas. Unbelievable.

Despite our Musical Director, David Beavan, being a Shrewsbury man, we don't very often give concerts in Shropshire. The fact that we're singing at St. Mary's in Bridgnorth in April is of enormous excitement to me. I can roll out of bed and be on stage in half an hour!

Our Bridgnorth gig is entitled 'I was Glad' and will include lots of choral favourites, like Parry's 'I was Glad', famously used at all Royal Weddings, and Handel's 'Zadok the Priest,' a Coronation Anthem which many might be more familiar with as football's

U E F A Champions League Anthem. Do come along.

Kick off is 7.00pm on Saturday 22nd April at St. Mary's Church Bridgnorth. Tickets are £10, to include interval refreshments, and will be in aid of St Mary's Music Fund. They are available from the Severn Hospice Shop in Cleobury, who will make £1 for every ticket sold, or from www.harboroughsingers.com or phone or email me: 01299 271934, gill.guest@fsmail.net

Gill Guest

CLEOBURY COUNTRY A.G.M.

Cleobury Country Limited, which does a great job keeping local business in front of local people, as well as running the Centre and the Library, will be holding its Annual General Meeting in the Centre on April 11th, starting at 5.00.

The AGM is a good place to hear what a company or club is doing, particularly if you are thinking of joining them. You can also hear how their finances stand and what plans they have to expand what they are offering. And if the meeting starts at a sensible time - 5.00 is half sensible, at least - it means you can get it done and get home reasonably early.



Home Support Services

All staff enhanced DBS checked with over 20yrs experience and training within the local authority/social services mainstream and dementia care sector. Fully insured.

Are you in need of support with the following basic day to day tasks?

Assistance during the day or night

Companionship

Shopping/Household tasks

Completing Forms

Pet Care

Attending social events/ appointments

Contact Liz

Tel: 01299 271623

Mob: 07826 929222

liz@livelifeathome.co.uk

Other support services available on request.

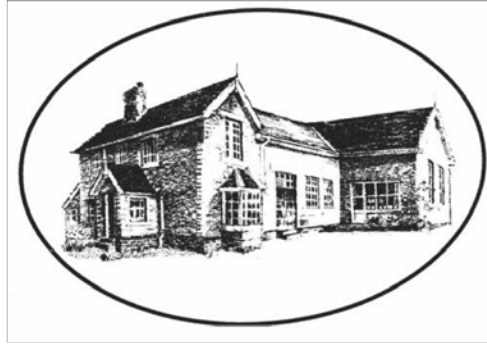
www.livelifeathome.co.uk

Contact Tracey

Tel: 01299 211660

Mob: 07957 659909

tracey@livelifeathome.co.uk



Bayton C of E Primary School, where our mission is

TO BE THE BEST THAT YOU CAN BE!

A school full of joy, inspiring our children to achieve their potential and to thrive and enjoy their learning experience, leaving confident in their abilities and ready for secondary school.

For further details about our school, contact the office on 01299 832393. Alternatively, visit our new website at www.baytonprimaryschool.co.uk

Cleobury Freezer Centre

6 Newhouse Farm - Tenbury Road - Cleobury Mortimer
01299 271345

Our huge range includes the following, with many more items available

Fruit

Strawberries
Raspberries
Blueberries
Cranberries
Blackcurrants
Redcurrants
Apple Chunks
Mango Chunks
Summer Fruits
Forest Fruits
Rhubarb

Vegetables

Button Sprouts
Broccoli
Cauliflower
Honey Parsnips
Peas
Mushy Peas
Baby Onions
Baby Carrots
Asparagus
Stir Fry Mix
Whole Beans

Free Delivery
For all orders over £20

Opening Hours
Mon—Fri 0900-1800
Sat 0900-1200



Mr Daves

Chicken Balti
Lamb Balti
Chicken Tikka
Rogan Josh
Thai Red Curry
Chicken Korma
Prawn Balti
PLUS
Garlic and
Coriander Naan
Garlic Slices

Individual Fish Fillets

Cod
Haddock
Salmon
Tuna
Swordfish
Kippers
PLUS
Prawns
Scallops
Mussels

CLEOBURY SWIFT WATCH

All are welcome to the first meeting of Cleobury Swift Watch on Thursday April 6th in the Methodist Hall, starting at 7.30.

Peta Sams of Shropshire and Ludlow Swift Groups will give us an illustrated talk about Swifts and what we can do in Cleobury to encourage this wonderful bird.

It is intended that Cleobury Swift Watch will link with some of the young people of the St. Mary's Youth Project to make new Swift nest boxes to supplement existing nesting sites in the town. Using SMYP's superior technology skills, we hope they can help us to link small cameras and microphones in nests of St. Mary's Church to screens inside the church so that we can all get a live humans' eye view of nesting, hatching and fledging from May to July. Swift nest boxes, cameras, literature and discussion will all be available as we plan what we can do when the Swifts arrive in May

Do come along and let's see if we can help to prevent a decline in our Swift numbers.

Kit Smith

THE BREAKFAST CLUB

At Lacon Childe School in March, George Castledine recalled 'Working in War-torn Countries', something he has been doing for some years, on behalf of the British Army and the World Health Organisation, amongst others.

His earliest exposure to a war zone was a trip to Belfast to deliver an IRA patient to hospital during a period of rioting and street fighting. Walking Belfast's streets at that time raised the frightening possibility of being mistaken for a British Army officer by an IRA sniper.

Amongst places to which the WHO sent George was Palestine, at a time when travel required negotiating with the Israeli Intelligence Agency and the PLO. The latter was well informed about George's mission, and wanted him to meet Yasser Arafat, who appeared unwell. On his return to UK, George was interviewed by the Foreign Office, interested in the health of an important Middle Eastern figure. Arafat died soon afterwards, and numerous theories sprang up about the cause of death. The mystery still remains; poisoning

by radioactive material remains a possibility.

More recently, George has visited Uganda for the WHO, with the aim of trying to restore social and medical normality after the depredations of The Lord's Resistance Army, a particularly brutal organisation, involved in mass killings. The LRA has now withdrawn from Uganda, but its leader, Joseph Kony remains at large. He has been indicted for war crimes by the International Criminal Court in the Hague, but has evaded capture. As the LRA destroyed many villages, two million people left their homes. Into this disorder George (recently accompanied by Jenny Vanderhook and Pat Sheppard) has been bringing much-needed medical services.

The Breakfast Club next meets at Lacon Childe School on April 11th to hear Gill Edmonds speak on 'Five Live to Witley Court Tea Room'. Members wishing to attend should contact Jonathan Fair (CM 271913) to book places.

Mark Baldwin

WIT AND WISDOM

There's always a lot to be thankful for if you look for it. For example. I'm sitting here thinking how nice it is that wrinkles don't hurt.
Anon.



Gilbert Carter

Specialist Joinery

- Built in Wardrobes
- Double Glazed Wooden Windows
- Staircases
-

Email: Gilbertcarter51@gmail.com
www.gcartersmartjoinery.com

01299
270626

Qualified tradesmen, fully insured

Tiny Stots
Informal parent
and toddler group
Fridays (term time)
10am-noon

Chorley Family Playgroup

Located
next to
Stottesdon
School



...shaping the future

Ofsted
'GOOD'
report

Highly-qualified staff providing Early Years Foundation Stage learning in a happy, safe and stimulating playgroup with a beautiful garden and outdoor play area.



Open
Mon-Fri
8am-5.30pm
(term time)
Competitive fees
Vouchers accepted
Holiday care available

Extra-curricular
activities including
yoga, dance,
craft projects, trips and
gardening to support
your child's learning
through play.

Community orientated
with strong links to
local schools.
15 hours per week
of funding available
for children over 3.

01746 718769 www.chorleyfamilyplaygroup.co.uk

Ofsted Reg. No. EY369688
Charity No. 1018755

Wild at Heart Flowers for your creations
tel: 01584 890 928 & 07526 283377



Tailored wedding flowers
Inventive funeral flowers,
Wild and wispy
or strikingly modern

29 Years in the trade.
Inspirational floristry of all natures
pre -ordered only. Book for appointment,
or phone for a home visit.



Free Local Delivery Service Covering from Cleobury to Ludlow

Wildatheartflowers@hotmail.co.uk

FROM THE BANDROOM

On March 12th the band left Cleobury early and travelled to Bedworth for the Midlands Area Competition to defend our title. We had been rehearsing the enjoyable test piece 'St Andrews Variations' since the beginning of January.

It was a very tight competition and I am pleased to report that we came third and by doing so, have qualified to compete at the National Brass Band finals at Cheltenham in September. This will be our third time in five years, something that we are rightly proud of.

We will hold our Spring Concert on May 13th at the Parish Hall, playing a popular music programme, with fish and chips served in the interval. Numbers are limited and tickets will be available from Carrot Tops priced at £10 or phone to reserve tickets with me on 01299 270262.

Running the band is expensive (it will cost us around £500 to go to the finals) and I would like to make a plea to anyone or local business who would like to

sponsor the band, to please get in touch with me. Could be a different way of advertising your business!

I thought it might be worth advertising that we would like to sell our complete set of traditional uniform, maroon jackets with gold braiding. If anybody is interested please get in touch to discuss.

Our training band is more popular than ever and we have recently had an influx of new players. If you are Grade One or higher and are interested in joining our friendly group, we have a range of ages and abilities. Just turn up to the social club at 6.45 on Tuesday evenings.

Our website lists our forthcoming engagements and also has contact numbers for both senior and training bands.
www.cmcb.org.uk

Katie Griffiths

CRICKET AT KINLET

Kinlet United is a village cricket club that's ideal for anyone who likes to play without the intensity of league cricket. Our teams include players from their early teens to their sixties (and occasionally beyond) and the

ethos is one of mutual support. Teams are a mix of ability and experience, and we never expect more of anyone than they feel happy with.

We play on the Moffats ground, which featured in the Daily Telegraph's "Ten most beautiful grounds" a few years ago. For us the social side matters as much as the game, developing friendships within the team and players' families. After every home game we treat our guests to refreshments in the Eagle & Serpent. We also play at some fabulous away venues, and our tour to Wiltshire every September is a highlight. All games are "friendlies", on midweek evenings and Sunday afternoons.

We're always looking for new players. If you'd like to join us (with indoor nets in Cleobury before we play outdoors), we'll give you a warm welcome. Please get in touch with me on 07710 288526 or fengleheart@hotmail.com

I can't finish without mentioning Cleobury's team, if you prefer the challenge of league cricket; or maybe you could manage both (I often do!). If league cricket is an option for you, I'm sure they'd like to hear from you. *Francis Engleheart*



Small Animal Boarding

Pet hotel for Rabbits, Guinea Pigs, Hamsters, Chickens and other small Animals.

- Spacious comfortable accommodation
- Initial inspection welcomed
- Every need catered for
- Competitive rates

www.noahsarkboarding@wix.com/noahsark

Call; 01584 890111 or 07886 982691 email; noahsarkboarding@btinternet.com



BAGGINSWOOD

Bagginswood, Cleobury Mortimer,
Nr. Kidderminster, Worcs, DY14 8NB
Telephone: 01746 718732

HEATH FARM MEATS

Home produced beef, pork, lamb and mutton.

Home cured bacon, gammon, sausages,
cakes, pickles and preserves.

OPEN 8.00 am to 5.30 pm

WEDNESDAY TO SATURDAY

01746 718732

Flowers by Fiona est 1991

Fresh Flowers made to order

Special Occasions

Weddings, Anniversaries, Birthdays

Sympathy Tributes

19a High Street,
Cleobury Mortimer

Tel: 01299 272 995

High Street, Cleobury Mortimer
DY14 8DX
TELEPHONE: 01299 271798

*Bowkett's
food
Emporium*

Open:~
Mon to Fri 8.30am - 5pm & Sat
8.30am - 2.30pm

Quality locally sourced meats and poultry cut and prepared
by Lewis & Brett our skilled butchers

Bowkett's Gold Award Winning Traditional Pork Sausage - Cooked meats and British & continental cheeses -

Award Winning Speciality Sausages and Bacon, Bowkett's home-made Faggots, Lasagne, Cottage Pies,
Sausage Rolls, Pork Pies, Scotch Eggs, Quiches and Coleslaw

Sandwiches & baguettes while you wait or call our friendly staff who will be happy to take your order

Hot tasty succulent chickens, sausage rolls and pasties

Delicious tasty baguettes and rolls baked on the premises and much more.....



Bowketts Food Emporium



MARK WILLIAMS - PROFESSIONAL WILLWRITER

"A lifetime's attention to complex legal issues as a retired Detective Superintendent and now a Private Client Lawyer, means **you can definitely trust Mark** to write your Will."

Wills from £75, Free Will Reviews, 50% off Lasting Powers of Attorney,
Probate Support, Care Home Fee Avoidance

& Big Savings on Funeral Plans

Instructions taken in the comfort of your own home or workplace

T: 01299 251442 M: 07966 053887 E: mark@ambalegalservices.co.uk
www.ambalegalservices.co.uk

Fellow of the Institute of Professional Willwriters & Trading Standards Approved



Shropshire
Fire and Rescue Service

**On-Call Firefighters Cleobury Mortimer
(Retained Duty System)**

Shropshire Fire and Rescue Service is currently looking to recruit on-call firefighters at Cleobury Mortimer Fire Station. On-call firefighters agree to be available for a certain number of hours per week; they carry a pager and must be able to get to the fire station within five minutes. For this they are paid between £1,587 - £2,116 per annum (dependent on contract) as a Retaining Fee plus payments for attending incidents and drill evenings at Cleobury Mortimer fire station.

TO APPLY YOU MUST LIVE OR WORK WITHIN 5 MINUTES OF CLEOBURY MORTIMER FIRE STATION

To be a Firefighter requires special skills and qualities, not only do you need to be able to work under pressure as part of a team at operational incidents you need effective communication skills to deal with the public at fire safety events and in their homes. You will work within your local community to support our aim of preventing fire related incidents and road traffic collisions. The Service is looking for people aged 18 or more on their start date who can demonstrate a high level of physical fitness

For an information pack please contact us on 01743 260220, or email HRAssistants@shropshirefire.gov.uk, stating your name, address and quoting Cleobury Mortimer

Shropshire Fire and Rescue Service is committed to equality and diversity at work. We positively welcome applications from disabled people and minority groups who are under-represented in our Service.

***Newbridge Cat Rescue and Rehoming Centre, which is a Registered charity, are in need of a data base designed to keep records of its operations. Last year we took in 354 cats and rehomed 286; this alone is over 600 records each year. We are looking for someone to write a Microsoft Access data base to enable us to record and search this data and maybe produce reports. We are able to offer the loan of a laptop with Access 2007 loaded for this purpose. We have a budget of £200 for this project.
Telephone 01299 270701.***

***Boys/Girls Wanted for Paper Round
Please contact Simply Fresh on 01299-270182
for more information.***

***Person required for mowing and strimming (our equipment) of large garden and grounds. About 6/8 hours per week during the growing season. Would suit 16+ year old and the hours can be worked around other commitments and the weather provided the grass is kept to an acceptable level. Situated 10 minutes walk from the centre of Cleobury.
Please telephone 01299 270701***

MORE JOB AND VOLUNTEER OPPORTUNITIES ON PAGE 39

HOPTON BUILDING SERVICES LIMITED

All Aspects of Building Work Undertaken

BANK HOUSE, STOCKHALL LANE, HOPTON WAFERS, WORCESTERSHIRE, DY14 0EG

Tel: 01299 270 870

Email: hoptonbuilding@yahoo.co.uk Mobile: 07977 495 163

Hopton Building Services is an established local contractor providing a full and comprehensive service in all aspects of building work from New Developments to Maintenance and Repairs.

Drawing on over 30 years' experience in the construction industry working for Local Councils, Housing Associations, Private Owners, Insurance Company's we specialise in:

- Disabled Adaptations
- **Full Central Heating Installations and Boiler Replacements**
- **Gas/Oil/Solid Fuel Appliance Services, Breakdown and Repairs**
- **LPG & Park Home Trained and certified**
- Property Extensions, Refurbishments and Alterations
- Roofing Works – Fibreglass Flat Roofing & Traditional Roofing.
- Full Bathroom, Shower and Kitchen Installations
- Damp Proofing
- Insulation Works
- Woodburner and Flue Installations
- Asbestos "Non Licensable Removal"
- General Building, Repairs and Maintenance Works
- UPVC Works
- Insurance Works

Our operatives are fully Qualified and Registered Gas Safe, HETAS, **OFTEC Engineers for Gas, Oil and Solid Fuel Appliances**, KBBBI Registered and CRB (DBS) checked.

All works carried out are fully guaranteed and comply with all current regulations.

Please call us for a free survey and a very competitive price.

The Fighting Cocks Inn Stottesdon



An historic inn, officially dating back to 1830 as a pub, but older as a coaching inn, and a brew house. The Fighting Cocks is famed for its passion for local produce, real ales, and initiatives to support the local community. We sell local produce from the pub and shop including local fruit, vegetables, meats, and of course the pubs famous homemade pies. Homemade puddings are also served both in the pub and the shop - but you will need to get here early!

Steak Nights Every Friday
10oz local ribeye or rump
Only £9.95

Senior citizen lunches
Tuesday to Friday
12:00 – 2.30pm

Live Music
Saturday Evenings



1 High Street, Stottesdon DY14 8TZ ♦ Tel: 01746 718270 ♦ www.fightingcocks.co.uk

A GLIMPSE OF THE FUTURE

Whatever personal prejudices suggest, logic tells us that electric cars are the future. You may have a view on the way electricity to feed them is generated, but they are here and getting better with each new model launch.

Current darling of the scene is the American built Tesla and I have been driven in a Model S that friend Michael Spencer had on loan. Mike is a convinced electric driver, with a Nissan Leaf in the garage and a broad enough view to judge the Tesla objectively. "You start here," he explained, showing me the car shaped remote control that had the door handles springing out from flush mountings as he approached.



Once in, I was waiting for the engine to start, but we moved away in complete silence. An eerie experience until you become used to smooth and near silent travel, the only sound coming from the tyres.

No conventional transmission, just an accelerator pedal to press and a brake pedal. The rate of acceleration is amazing, but use of full power does drain the battery; driven sensibly the car has a range of 190 miles and we called at the Hopwood Bank services on M42 to plug in and top up - free. In the time it took to order and drink a coffee, the battery was fully charged

The car comes with a high level of automatic operation if the driver chooses to use it, although Mike has found that if you need to switch on the headlights in a daylight fog bank, you have to fiddle with the "iPad" to do it. A minus point. But using cruise control (on city roads or motorway) keeping a fixed distance from the car in front is a delight. Subject to good mobile phone reception the car will even park *itself*. *Poor reception can be a problem.*

It's very comfortable, the bank of batteries that cover the floor

area give a low centre of gravity that makes cornering very easy and stable, while at Motorway cruising speeds the combination of stability and low noise makes it a very relaxed way of travelling. Only at illegal speeds was there any wind noise.

The instrument panel is dominated by a 13 inch iPad that can provide a huge range of information. But do you want to keep looking at the screen instead of the road ahead? Basic information is shown very clearly in front of the driver.



Neat and tidy interior.

I must say I was impressed by this experience of how good an all electric car can be. Would I choose future driving if I could afford such a car? Bring it on.

Jim Reynolds

Style House Salon

Your modern salon suitable for all ages

01299
271919



38 High Street,
Cleobury Mortimer
DY14 8DQ



A small family run business specialising in quality wooden gates to suit all entrances.

Visit our website: www.turnersgates.co.uk

Drop us an email: turnersgates@outlook.com

Or give us a call on: 01299 270 965



Quality financial advice for family, for business, for life



I provide a comprehensive financial planning service offering specialist face-to-face advice tailored to you. My services include:

- Investment Planning
- Business Planning
- Retirement Planning
- Intergenerational Planning

I offer a no obligation initial discussion simply to establish whether I can help you.
Please contact me on 07576 484494.

de Courcy May Wealth Management

Email: jon.may@sjpp.co.uk

Mobile: 07576 484494 | Tel: 0121 7336733

Website: www.dcmwm.co.uk

de Courcy May Wealth Management represents only St. James's Place Wealth Management plc (which is authorised and regulated by the Financial Conduct Authority) for the purpose of advising solely on the Group's wealth management products and services, more details of which are set out on the Group's Website www.sjp.co.uk/products.

The Mobile Vet Service

Who we are and the services we offer:

We endeavour to arrange your visit when it suits you best, so we ask if you would prefer us to see your pet in the morning (9-12) or afternoon (12-3) at the time of booking. We then contact you on the day of the visit to provide you with a more specific time if possible. Please have a collar and lead available for your dog, and please restrict your cat to a safe small room.

The mobile vet service is offered by Severn Edge Veterinary Group to its registered and new clients. It is staffed by a qualified vet and a nursing assistant who are available 9am till 3pm Monday to Friday.

We carry the necessary equipment and medication to enable us to provide a veterinary consultation in the comfort of your own home. The service we offer ranges from routine vaccinations and nail clips to blood sampling and euthanasia. The cost of a home visit under the Mobile Vet Service Zone Scheme is only £10 and any medication or service fees are exactly the same as when your pet is treated at any of our branches.

Is my area covered by mobile vet service?

As we cover such a large geographical area we group our planned visits accordingly. Hence on each day of the week we cover specific postcode areas:

Monday - SY6 7, SY6 9, SY8 9, SY8 3, WV16

Tuesday - DY14, DY12, DY11, DY10 1, DY10 2

Wednesday - WV16, TF13, SY5 6

Thursday - TF12, TF7, TF8, TF11, TF 1, TF2, TF3, TF4, TF5, TF5 6, WV15

Friday - WV15, DY7, DY6, DY3 4, WV6, WV7

Is a mobile vet visit right for you and your pet?

If you would prefer us to treat your pet at home and you live in one of the postcode areas we cover, then simply get in touch and we can discuss your requirements. On occasions we may recommend a pet is best seen at a local branch or a more urgent home

visit is necessary. For example: if we suspect your pet's condition requires more prompt attention or may need access to hospital equipment. We are more than happy to provide help and guidance if you are unsure. Some of the more common reasons our clients choose to use Mobile Vet Service are listed below:

- Multiple pets and litters of puppies
- Pets with long term mobility problems
- Pets with fear or dislike of travelling
- You are unable to travel to one of our branches

How to book a mobile vet visit?

Just phone 01746 713 914 and leave us a message with yours and your pet's details. We will aim to get back to you within 24hrs. Alternatively, contact your local branch. Please allow 48hrs notice for your Mobile Vet appointment.

We look forward to hearing from you.



Anastasia Roberts MRCVS and Julieann Harris



Severn Edge
VETERINARY GROUP

Mobile Vet Service



'No stress and all the home comforts'
Available Mon-Fri, 9am-3pm
01746 713 914

Terms and Conditions Apply. Severn Edge Veterinary Group is the trading name of Severn Edge Veterinary Group Limited, a limited company registered in England & Wales, no. 9523786.

www.sevg.co.uk

Ashley's Bakery

Supplying fresh bread, daily from Ashley's Bakery in
Cleobury Mortimer to our shops at:

Cleobury Cafe Bakery Dept. 01299 271 517

Teme St, Tenbury Wells 07772 743570

Load St, Bewdley 01299 404147

Also available; Bakery Direct to the Trade

& Outside Catering

For more details:

Call 01299 271 283 High Street, Cleobury Mortimer (Est. 1988)

Ashley's Bakery Unit 2, Old Station Business Park, Cleobury Mortimer



Cleobury Cafe

**Breakfast, Lunch and Afternoon Tea
available 7 days a week**

Slush machine & Soft whip ice cream for the Summer!

A hot & cold takeaway service

**Bakery Dept. Selling Ashley's bread & cakes
Grab lunch on the run and pre-order on;**

01299 271 517

**High Street
Cleobury Mortimer**

**Mon—Sat 7am—5pm
Sun 8.30am—4.00pm**

QUALITY UP ON THE HILL



Doddington Lodge has been established as a residential home since 1984. It's grown quite a bit since then, now boasting two wings: Malvern looking out to those distant hills and Mortimer looking down on Cleobury. You can't miss it, proudly standing in its beautifully kept grounds. The owner is Vanessa Cronk, whose family history in care homes goes back more than 50 years.

The manager when we called was Michelle Lloyd, who plans to stand back and work as deputy manager to give more time to building her qualifications and look after her 16 year old daughters and their GCSE studies.

Michelle is passionate about the Lodge, which was awarded a Care Quality Commission 'Good' rating last December. "My aim is to make the Lodge the best residential home in the area," she explains. "All the staff

have an NVQ3 qualification and if they haven't when they join us, we'll have them working up to it very soon."

Looking to add to the services available, Michelle actively promotes all carer staff to deal with dementia: "It's simply a matter of giving a sufferer dignity and respect." She's very particular about dignity, and refers to every resident's room as their flat, all built around the community that is Doddington Lodge. Owner Vanessa shares that view, and residents can choose the decor and furnishings for their rooms.

That standard of individual choice extends to the catering, where again each resident can say what they wish to have and the catering team will build it into the menus. "She's a miracle worker," admits Vanessa. "We're firm believers in home cooked meals and all the food is sourced as locally as possible."

Michelle sums up the approach they have to the job: "I want people to know how passionate we are," she says. Walk into the entrance lobby and look at the range of quality certificates on display; they tell you how proud these people are of their name.

To find out more, call them on 01584 890864 or visit:

www.doddingtonlodge.co.uk.

Or follow them on social media to see all that's happening up on the hill.

CLEOBURY W.I.

Mark Baldwin's March talk on World War Two Code-breakers and the Enigma machine was well attended and held everyone's attention. It was interesting to hear facts rather than any film version, as well as see and try an Enigma machine.

We will be back at the Market Hall on April 11th to learn how to design jewellery with Laura Grey. Remember to bring £4 per person for a memory wire bangle using non precious beads, Semi precious stones on memory wire from £7-£10 per person for materials. Visitors are welcome; 7.30start; £4 to include refreshments.

More information on Cleobury Mortimer WI's Facebook page, contact me on CM 270983 or email judysant10@gmail.com.

Judy Sant

SILLY BIT

Q: What is the fastest way to a man's heart?

A: Through his chest with a sharp knife.

Anon. (Of course!)



CARROT TOPS



YOUR LOCAL FRESH FRUIT & VEG SHOP

ALSO, AVAILABLE; CLUN VALLEY MEATS, JAMS, PICKLES, CHEESES, PATE'S
WENLOCK BACON, MAWLEY MILK & CREAM, LOCAL HONEY & MUCH MORE
BOX DELIVERIES AVAILABLE TO YOUR DOOR, HAMPERS MADE WHILE YOU WAIT

CARROT TOPS, 28 HIGH STREET, CLEOBURY MORTIMER

COME & SEE US; WE ARE OPEN 6 DAYS A WEEK

MONDAY – FRIDAY 9.00AM – 4.00PM

SATURDAY 8.30AM – 2.00PM

SUNDAY - CLOSED

OR CALL JULIE – 01299 272886 OR 07951 633585

Email: Julie@carrottopsltd.co.uk

WE ARE ALWAYS HAPPY TO HELP

Robert Bradley Logs

07794 798616



*Seasoned Firewood, Hardwood,
Softwood or Mixed loads of logs.
Free Local Delivery*



Produced & bottled at
Mawley Town Farm,
Cleobury Mortimer
01299 270359

Mawley Milk
direct from the cows
to a shop near you!

We guarantee you won't find tastier fresher milk with so little food miles.
Early morning doorstep delivery available in Cleobury Mortimer

Like us on Facebook/Mawleytownfarm

To find your nearest stockist visit our website www.mawleytownfarm.co.uk
email: info@mawleytownfarm.co.uk

THE CRUSTY COB

BAKERY, SANDWICH BAR AND TEAROOMS

Wide range of fresh bread supplied daily, including speciality items

Freshly made sandwiches to take away

Award winning pork pies from Reg. May

Large selection of cakes and confectionery

Telephone orders taken; Delivery service available; Outside catering

Open from 8.00am to 5.00pm, Monday to Saturday
18 Church Street, Cleobury Mortimer Tel: 01299 271190

simplyfresh

Tel: 01299 270 182
2/3 Talbot Yard,
Cleobury Mortimer, DY14 8BQ.

Opening hours:
Mon—Sat 7am—9pm
Sun 8am-8pm

**Local & Seasonal Produce,
Delicatessen Counter,
Organic & Gluten free ranges,
Greengrocery,
Off Licence, Newspapers,
Health Lottery,
General Convenience Store**

THE SPORTS AND SOCIAL CLUB

February and March has been a busy time for the Social Club with refurbishment work on the toilet facilities continuing, the disabled and bar side men's toilets nearing completion. Work has also started on the toilet facilities in the function room.

March 5th saw 14 teams compete in the Big Quiz, very ably compered by Justin Parker. The questions were once again challenging (it's not always about the winning!) with £425 raised for Cleobury CoCo and Prostate Cancer UK. Thanks to all those involved in the organisation, those who donated prizes, Justin for making it good fun, and to all the folks who made up teams to support these worthy causes. Great to see so many young people taking part too.

40 Senior Citizens attended an Afternoon Tea Party on Friday 17th March. Our guests were entertained by Trevor Wood, a retired banker who moved to Cleobury four years ago, and now donates a part of his retirement time providing musical entertainment. Following a very enjoyable

music quiz and sing-a-long, everyone tucked into tea and cakes. Thanks go to Trevor, those who baked and donated cakes and helpers on the day.

Children are invited to join us for an Easter Egg Hunt on Friday April 14th. Registration is at 10.30 am for an 11.00 o'clock start, cost £2.50 per child.

This month's Open Mic Night will be on Thursday April 27th, starting at 7.30pm. All performers welcome.

Periodically through the Summer, we will be introducing a guest beer for all you real ale lovers. It's the start of the cricket season, and cricket, as well as other sports matches and Formula One will be shown on Sky Sports/BT Channels.

For further information please contact our Bar Manager, Andy Goold on 01299 271448.

Glenys Turpin

THE CLEOBURY MORTIMER LECTURES

History talks under the twisted spire

A great success last year and Robert Hodge brings early notice of this year's offering: After the success of last year's programme, a second series of lectures will take place on May

25th, June 19th and July 6th in Saint Mary's Church, Cleobury at 7.30pm

Come and listen to a talk by a very special guest, find out about forced removal and help shed light on an unsolved murder.

All in aid of Saint Mary's Youth Project

www.cleoburymortimerlectures.uk

Robert Hodge

THE READING GROUP

Few of our group finished "My Name is Red" by Orhan Pamuk. A difficult read, all thought it would have benefited from being shorter. Set in late 16th century Istanbul, it is a glimpse into Islamic society, many voices telling the tale from different perspectives. The story involved miniaturist artists, their art and East and West artistic traditions, plus love story, mystery and clash of cultures. Little has changed, with religious and cultural clashes still causing problems worldwide. We appreciated the time line at the back which helped our understanding. We would recommend as an insight to Turkish culture. Back to the West Midlands as we read "The Girl on the Wall" by Jean Baggott. We meet in Cleobury Library on April 17th

CLEOBURY MORTIMER CARPETS

Supplying and Fitting of:-

- Carpets
 - Natural floorings (Cair, Sisal & Seagrass)
 - Vinyls
- Carpets supplied by: Victoria Carpets, Fibre Flooring
& Alternative Flooring at Unbeatable Prices

Contact Details:-

Address: 26 High Street
Cleobury Mortimer •DY14 8BY

Telephone: H: 01299 270095
M: 07739 186163

Email: garethleach@aol.com
or check out our new website
www.cleoburymortimercarpets.co.uk

The Miah Brothers Famous Spice Empire

Bringing great taste and value to Cleobury Mortimer for 17 years



17 High Street, Cleobury Mortimer
6-11pm 6 Days a Week
Acclaimed Indian restaurant with
wide range to suit all tastes.
Sunday Buffet from 12.00pm-
9.00pm.
As much as you can eat for just
£9.95 a head.
Free home delivery up to 5miles
Reservations: **01299 270419**



6/7 Church Street, Cleobury Mortimer
*'Fine bar, excellent food at prices to
suit all pockets'*
Top Value dining.
Our Dine In Meal Deal gives you a:
starter, main course and naan or
rice for just £9.95.
Tuesday to Sunday, 6.00-11.00pm
Reservations: **01299 271485**



57 High Street, Cleobury Mortimer
6-11pm Wednesday- Sunday
Dine at home with the same great
quality our restaurant offers.
Monday- Tuesday
collect Takeaways from
Spice Empire:
Tel: 01299 270419
Free home delivery up to 5miles.
Orders: **01299 271604**

SPICE NEWS:

Orders over £40 come with free bottle of wine. Free Delivery up to 5miles from the Spice Empire & Spice Express.

www.facebook.com/pages/the-spice-empire

Mannerly Mutts Open Day



Sunday April 23rd 2017



All Welcome 2:30pm - 5:00pm FREE!

Upper Marshes, Catherton Common, DY14 0JJ

Demos of Agility, Doggy Dancing, Obedience
Teas & Cakes Available

Fancy trying dog agility?

Pet Agility Training Classes For All - tall or short, young or old
Full Set Of Kennel Club Standard Agility Equipment

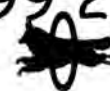
Chat to the Mannerly Mutts Team about

Dog Behaviour or Training
Heelwork to Music (doggy dancing)
Dog Walking, Home Boarding and Pet Sitting



jo@mannerlymutts.co.uk 01299 270514

www.mannerlymutts.co.uk



THE ASPIRE CENTRE

This is a rather special place, where students looking to move into a career in engineering get a focused course. It's part of North Shropshire College, the most southern branch if you like, at Burford. Just across the A456 from Tenbury Wells and Worcestershire.

Gina Harris heads a small but devoted team: Nicola Pearson teaches English, Simon Thomas looks after lathe work and maths while Dan Morris oversees welding and vehicle servicing. The place has been open since 2001 and has built a good name, with local engineering companies using it as a recruiting centre.

MIG welding is in demand and students are taught well. We looked at one sample of work, with a variety of tasks that included joining two metal pieces at right angles while the work is held vertical. No easy task, keeping the metal flowing when it wants to go with gravity. And no surprise that two recent students are working on North Sea oil rigs, where the welding has to be very good.

The lathe work requires a variety of jobs on a sample, which student Jordan Ledbury



The Aspire team. From left, Nicola Pearson, Dan Morris, Gina Harris, Simon Thomas and student Jordan Ledbury.

showed us when he'd finished a job on one of the cars there for practical work. Tutor Dan Morris has worked at some big name places before taking up an urge to teach, and now produces mechanics ready to handle basic tasks and learn more according to whatever job they take up.

It's a big workshop that holds a number of cars plus separate welding and machining shops. The pass rate is impressive - 100 percent reach Level 2 if they complete their chosen course. In a world where there is a growing demand for engineers this place is a vital source.

01584 811789 is the number for more information.

FOOTPATH NEWS

We had eight people out on footpaths at our March work party, enough for two teams.

One team repaired the steps at the bottom of Workhouse Bank. Long term residents and walkers will remember that this bank used to be impossible during the winter months. The steps we put in some years ago transformed it into a useable path all year round. They have taken a hard battering since but have stood up quite well. Just three steps needed replacing. The team also did some improvements to two other stiles and put in a fingerpost.

The second team put in a small plank bridge at Sproseley and made repairs to a stile on common lane.

The April work party is also planned to tackle more than one job so a good turn out is needed. From May we will also be carrying out clearance of summer growth along paths and at stiles. This can be done individually or as small groups.

More hands are always welcome so if you would like to join us on what is an enjoyable and rewarding activity, please get in touch. *Graham Simpson*

Do you suffer discomfort from:

- Corns •Callus/Dry skin •Thickened nails
- Verrucas •Athlete's foot •Ingrowing toe nail
- Being unable to cut your own nails

Also provide:

- Complete foothealth check •Medical pedicure
 - Foot massage •Evening and weekend treatment available
 - Free Vascular check of the foot
- 20 years experience



For professional treatment of foot related problems at my surgery, your workplace or in the comfort of your home

Contact IRENA
01299 841277
07795 958186

The Old Farm House, Button Bridge, Kinlet
DY12 3AW •email: hessins@gmail.com
Irena s.a.c.dip.(Dist). f.h.p.p. n.c.f.e. r.f.h.p.



Cleobury Opticians

NHS & private eye tests ♦ FREE children's glasses ♦ FREE NHS glasses
♦ Home visits



Primary Eye-care Assessment
and Referral Service



Opening Times-	
Tuesday	9am-1pm 2pm-5pm
Wednesday	9am-1pm 2pm-5pm
Thursday	9am-1pm 2pm-5pm
Friday	10am-2pm
Saturday	9am-1pm

www.cleoburyopticians.co.uk

16 Church Street, Cleobury Mortimer, Kidderminster
DY14 8BX

Tel: **01299 270012**

Email: cleoburyopticians@outlook.com

SPAR



National Lottery & Post Office

OPEN:

7am-8pm Mon Thurs

7am-9pm Fri-Sat

8am-8pm Sun

General store, off licence,
newspapers, gas, electric
top-ups, Health Lottery,
bill payments & more.



Telephone: 01299 270236

BODEN & SON DELIVERIES

est. 2013

Delivering fresh Mawley Milk from the farm to your doorstep

Delivering to:

CLEOBURY MORTIMER, CLEE HILL, CLOWSTOP, BAYTON, MAMBLE, ROCK,
FAR FOREST, CALLOW & BEWDLEY.

Also selling many other items

Telephone: **01584 891550**

EMAIL n.bowden30@gmail.com





Many families in Shropshire have some positive news this month, as the national living wage increases to £7.50 – a £500 pay rise for a full-time worker on the minimum wage – and the tax free personal allowance for all taxpayers rises for the seventh year in a row to £11,500. These two measures will particularly help the lowest paid, which is welcome.

Also this month Shropshire will start to benefit from the £12m of additional funding for social care from last month's Budget. Shropshire's acute hospital trust will be able to bid for some capital funding to help put in place improved triage streaming at A&Es to prepare for next winter. These measures will help alleviate acknowledged pressures in the system.

This month we will also start to make progress with Brexit, following the passage of the Brexit Bill through Parliament. The PM has been consistently clear – Brexit will happen and she is determined to make a success of it. There will be no attempt to stay in, re-join the EU, or rerun the national vote. It was the UK's decision to Leave, and we will take this path together.

Away from national policy, the way in which the majority of services for people in the Ludlow Constituency are provided is through Shropshire Council. Everything from roads to adult social care, bin collections, and planning are determined from Shirehall. Just as Whitehall has spent the last few years pushing responsibilities down to Shirehall, Shirehall is now looking to local communities to take on more responsibility for non-statutory services in their area.

So who we choose to represent us at local elections is very important. On 4th May, across

South Shropshire, voters will be asked to choose who they believe will effectively represent their area at Shropshire Council. I will be encouraging people to express their democratic right to vote, or to consider standing at either county level, or town and parish council level.

If you feel you could represent your community when important decisions which affect the local area where you live are being taken, I would encourage you to consider applying to be a candidate. Nomination packs can be requested from the Electoral Services team via e-mail at elections@shropshire.gov.uk or by phone on [0345 678 9015](tel:03456789015). Nominations must be submitted by 4pm on Tuesday 4th April 2017.

But clearly, not all will have the time or energy to stand for elected roles. So using your vote to back your preferred candidate can make a difference. If you are intending to vote in these upcoming elections, it is important to ensure you are registered to vote ahead of the deadline of 13th April 2017. This can be done online at www.gov.uk/register-to-vote. These are the first countywide local elections under the new system of Individual Voter Registration, which was introduced in 2014, so it is worth checking you are still registered, to avoid disappointment on polling day.

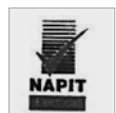
When more people feel able to stand for election, or use their vote, our democracy becomes more inclusive and representative. So whatever our political beliefs, we should encourage as much political participation in voting, whether by post or in the ballot box, as we can.



Electrical & Security

Tel: 07973 112463 (Anytime)

01299 489223



- Full/ Part Installations
- Existing System Updates
- Alarm & Security Systems
- PAT Testing
- Domestic and Commercial Properties
- Electrical Problems

- Landlords & Electrical Safety Certification
- Upgrades
- Free Callouts and Quotes
- For Existing and New Installations and Security.

Part P + Full Scope Registration

Card Payments Accepted



Fast Friendly Service, No Job Too Small

ALLTRADE WINDOWS

UPVC SPECIALISTS

- Windows/Double Glazing Repairs
- Conservatories
- Composite & Upvc Doors
- Bi-Fold & Tri-Fold Doors
- Sliding Patio Doors
- French Double Doors
- Garage Doors
- Fascia Boards & Guttering
- All work guaranteed/30yrs experience

FREE
QUOTES



Ring John: 07846460141

Birthday Parties Holiday Activity Days

Climbing / Abseiling
High Ropes
Raft Building
Zip Wire
Big Bounce
Challenge Course
Indoor Caving
Ask about others



Tel: 01299 271217
Enquiries@pioneercentre.org.uk



Minimum Age 8yrs

90 minute Session
£11 per person
Minimum 10 people

3 hour Session
£20 per person
Minimum 10 people

Hire a room for an hour
After your session
To cut the cake etc £15

T.PREECE TIMBER BUILDINGS LTD

The Old Station Business Park - Bridgnorth Rd - Cleobury Mortimer - DY14 8SY
Custom Built Log Cabins & Timber Framed
Mobile & Permanent Homes

Garden Buildings-Home Offices-Garages-
Glamping & Shepherds Huts



01299 272801 - 07970078336 - www.tptimberbuildings.co.uk

THANK YOU

Valerie Cope and daughters, Jill Pottinger and Sue Lambert, would like to thank the hundreds of people who attended John Cope's funeral on 24th February, and wish sincere thanks to all those who expressed sympathy and made donations to a total of £1275.

We would also like to thank Adrian Satterly, of Cleobury Funeral Directors, for the care and understanding taken in all aspects of the funeral, and the doctors, nurses and carers who often went above and beyond their roles.

CLEOBURY COMMUNITY CELEBRATION

Saturday June 10th

Q. What is it?

A. A fun family day out to celebrate what Cleobury has to offer including local groups, organisations and talented individuals

Q. What's on?... Who do I contact to get involved?

A. Playing Field: Lots being planned, including fun run, food and a dog show

Contact: Matt Sheehan:
matthew.sheehan@cleobury.org.uk

Sports and Social Club: Will be open with activities including

face painting, junior disco & evening entertainment

Contact: Andy Goold: 01299 271448 / FB: Cleobury Mortimer Sports&Social club

Cleobury Creative: Using the Market Hall; Lacon Childe School and St Mary's Church Celebrating the artistic and creative talent of the people of Cleobury Mortimer

Contact: Clare Carter:
carterart@btinternet.com

Cleobury Town Trail: A fun trail for the kids and family with map and small prize for those who do it.

Health & Well Being: Showcasing groups and organisations locally to promote health and well-being awareness
Contact: Cllr Jon Bodenham
jon.bodenham@cleobury.org.uk

We would like to thank all those supporting this event including Cleobury Mortimer schools, and local businesses. Why not get involved?

Volunteer Coordinator: Pete Blackburn: petblack@me.com
Cleobury Mortimer Parish Council: 01299 271154

LEGION NEWS

On Sunday March 19th, 50 members and guests sat down to an excellent luncheon at the Sports and Social Club, catered for by Phil Gibbs. Following the meal, we were addressed by

Group Captain 'Jock' Brown who, as a serving RAF officer, told how he sees the future of Britain's armed forces.

Our next event is a coach outing to Stratford-on-Avon on April 19th. There is a lot to see in Stratford, so passengers will be able to choose their own programme for the day. Tickets cost £12 each, available from Ron Breakwell (270830) or Mark Baldwin at The Bookshop (270110).

On the fund-raising front, Cleobury can be proud of its recent achievements. Roger Gittins reports that a record £6,530 has been raised for the 2016 Poppy Appeal, and the Annual Quiz, organised by Lesley Ravenscroft, raised £123.50 for Fisher House, the hostel for the families of service men and women being treated at Birmingham's Queen Elizabeth Hospital.

Mark Baldwin

SPICY DEALING

Overheard in the Spice Empire late one evening, when the bill for a very good meal appeared. Customer: "As we're three old age pensioners, how about a special deal? Say 10 percent off?"

Reply: "Tell you what I'll do, sir. We normally charge 10 percent extra on a Sunday, but I'll knock that off for you." Laughs all round, bill paid. Good meal, too.



☎ 07951-329664
01299-271280
01299-271531

P. W. TYRES

Mobile Tyre Fitting Service



WE COME TO YOU AT HOME OR WORK!

Tyre Change & Balance
Puncture Repairs
Batteries

Wheels Powder Coated
from £35-00

Rim Bands all colours

Nitrogen Filling
Experts



Locking Wheel Nut Removal

*** 7 day service ***

Firewood

Seasoned logs, barn dried & ready to burn.

Free local delivery -01584 890993 or 07970878224

Various size loads available



Paul Harding Tree Services



Stewart Mumford Architectural Services
Bespoke Architecture

Great value personal service backed up with extensive local knowledge, established links with other construction professionals to ensure comprehensive packages specifically tailored to individual needs.

Initial consultation free of charge.

Specialist in Works to Listed Buildings, Affordable Houses, Open Market Houses, House Extension and Alteration, Barn Conversion and Commercial Projects.



T: 01299 271068

M: 07977 921039

E: office@stewartmumford.co.uk

Posh Potties

Luxury Designer Toilet Hire

A Family run business who specialise in the hire of :

Luxury Mobile Toilet Trailers and Refrigerated Units for outdoor events.

We have all types of Portable Toilets available to hire – from Plastic Portaloos to Large Luxury Toilet Trailers.

We can also provide Refrigerated Trailer Hire

Please visit our website or contact Emma or Chris on 01746 718518 / 07929 314020 for more information.

www.poshpotties.co.uk Oreton, Cleobury Mortimer emma@poshpotties.co.uk

FACTS AND TIPS FROM RED HARE

**This month from stylist
Chelsea Hester:**

FACT: Hair grows slightly faster in warm weather because heat stimulates the circulation and encourages hair growth. So if you're struggling to grow your hair, get out there and enjoy some sunshine.

TIP: To untangle your hair always use a wide toothed saw cut comb or specialized detangler. Never use a bristle brush as these are for styling purposes only. Application of a silicone free leave-in conditioner will also help.

CLEOBURY PATIENTS' VOICE

There are plans to create a single Emergency Department in Shropshire, and to downgrade the remaining hospital to a Planned Treatment Centre. But it seems both will still have A&Es. The newsletter explains what these so-called A&Es will cover: "Non-emergency injuries and ailments", "Some fractures" and "Minor head, eye or ear problems". Not an emergency service, but perhaps in the bizarre fantasy world these publicists inhabit, "A&E" now stands for "Ankles and Ears".

The same people appear to have created the video doing the

rounds of parish council meetings and shown to those who attended last month's Local Joint Committee meeting, held at the Medical Centre, on the subject of health and social care. The video is a slice of propaganda in support of the Future Fit programme, but neglects to mention that the latter needs over £300 million in additional, unsourced capital spending to realise its ambitions. In his budget the Chancellor announced monies of £375million for such NHS projects; this was for the whole of England. Need I say more?

In Shropshire social service now goes by the name of People2People. It's still run by Shropshire Council and our latest Council Tax bills include the maximum 2% uplift permitted by the government to assist with the social care funding shortfall exacerbated by Shropshire's seven-year tax freeze. At the LJC meeting, People2People announced that it would be setting up a "hub" in Cleobury in the near future: a regular, monthly drop-in session where people can bring their social care issues and concerns. Watch for further details.

Mark Radford

NEW FITNESS CLASS

SA Fitness is a new venture, starting out with a Fitness Focus

Group in the Parish Hall with a Monday morning one hour session, 40 minutes devoted to actual exercise. The first class will be on the 24th, all abilities catered for at just £5.00 a time.

Steve Adams is the man behind it all, on 07969 523 228 or safitness1@outlook.com. With summer around the corner and the beach calling, could be just the thing you need.

ROCK PATHFINDERS

This month's Thursday morning walks are on the 6th, when they gather at Ye Olde New Inn, Pound Green, Arley DY12 3LF or SO Reference 757792.

Then on the 20th the meeting point is the Island Pool on the Wolverhampton Road at Cookley. DY10 3RX or SO Ref: 853804. More information from Alan on 01299 400304.

HORTICULTURAL NEWS

The speaker from Wyre Forest parks department was unable to come in March. The place was taken by Richard and Leslie Betts who entertained with some audio visual presentations.

Our next meeting is on April 10th and we will be learning how to sharpen our blunt tools, so please bring them along.

Our May meeting is on the 6th at 8.00 o'clock in the Methodist hall.

Liz Smurthwaite.

**LACON CHILDE SCHOOL**
the future begins here
Headteacher: Darren Reynolds





Lacon Childe School, Love Lane, Cleobury Mortimer, DY14 8PE
Tel. 01299 270312
email - admin@lacon-childe.org.uk

The April Clarion Social Calendar

Part One

Date	Time	Details	Contact	Telephone
Sat 1 st		Its April Fool's Day. Not that we'd be trying any false stories in the Clarion.....		
	8.00am	Sale of Household Goods, Knowle Sports Ground, Clee Hill		
Sun 2 nd	6.00	Open Mic Night at the Kings Arms, Church Street		
Wed 5 th	10.00	Walking for Health step out from the Sports Centre	Alan Kimber	CM271 754
	8.00	Whist Drive at Doddington Village Hall	Sonia Pearsall	01584 890874
Thurs 6 th		BLACK WHEELIE BINS AND RECYCLE BOXES EMPTIED TODAY		
	10.30am	Rock Pathfinders meet at Pound Green, Arley. PAGE 31	Alan	91288 400304
	7.00	Healing for Wholeness for Lent, at St Mary's Church. PAGE 7		
	7.30	Cleobury Swifts Group, Methodist Hall, Church Street. PAGE 11		
Mon 10 th	6.30	Writing Group, Library, Love Lane. PAGE 5	Jim Reynolds	CM270 642
	8.00	Horticultural Society meet at Methodist Hall	Flo Hadley	CM271 762
Tues 11 th	7.25am	Breakfast Club meets at Lacon Childe School. PAGE 11		
	5.00	Cleobury Country AGM, in the Centre. PAGE 9	Clare Todd	CM272 300
	7.00	Cleobury W.I. meet at the Market Hall. PAGE 21	Judy Sant	CM270 983
Wed 12 th	10.00	CoCo Coffee Morning, Market Hall, £1.50 for coffee & homemade cake		
	7.30	Neen Savage W.I., Village Hall, talk: "Life on a Smallholding"		
	8.00	Royal British Legion Meet at The Bell, Lower Street	David Taylor	CM270 793

BROMYARD SPEED FESTIVAL, APRIL 1st and 2nd

Details of this event arrived rather late, but we did hear that it was a good weekend last year. For 2017 the organisers have added a re-creation of the 1946 Bringsty Common Grand Prix on Saturday, featuring motorcycles of the era when that event happened. It will be a time trial on private land, with no access for spectators.

On Sunday the Festival will feature two early Land Speed Record contenders, Parry Thomas's famous 'Babs' and the 28 litre Fiat from Pre World War One days. They will be in action around the town, along with lots of vintage and classic cars and motorcycles. Prominent amongst the two-wheelers will be a collection of Italian Laverdas, both road and race machines, a famous make that was imported into the country by the Slater Brothers of Colington, just down the road from Bromyard. In this neck of the woods Laverda is better known for its combine harvesters, of course.

The action starts at 10.30 and is expected to last until early afternoon. Expect crowds and quite a lot of noise, not to mention some unusual odours from the alcohol based fuels the very early racing machinery will be burning and the distinctive whiff of castor oil that they also use. There is no racing, just demonstration runs that will evoke the sights and sounds of a past era. Great fun for petrol heads.



Hobbs Building Services

EST 25Years.

A Total Plastering, Maintenance and Building Service for your home,
business and outbuildings.
Insurance work undertaken

Emergency call out service for general plumbing, roofing, boarding up damaged doors and
windows. For a free quote please call;

Ian on; 07967190742

Email: hobbsbuildingservice@yahoo.co.uk Or Call/Text Kelly on; 07790085307

The April Social Calendar Continued

Part Two

Thurs 13th		GREEN WHEELIE BINS EMPTIED TODAY		
		Deadline to register to vote in May's local election. PAGE 27		
Fri 14 th	10.30am	Children's Easter Egg Hunt from Sports & Social Club. PAGE 23		
Sat 15 th	9.30am	Farmers Market, in and around St Marys Church	Clare Todd	CM272 300
Mon 17 th	7.30	Reading Group meet at The Library, Love Lane. PAGE 23		
Wed 19 th		Royal British Legion outing to Stratford-on-Avon. PAGE 29	Mark Baldwin	CM270 110
	10.00	Walking for Health leave the Sport Centre for a social stroll	Alan	CM271 754
	7.30	Stottesdon W.I. meet at Chorley Village Hall. PAGE 39		
	8.00	Whist Drive at Doddington Village Hall	Sonia Pearsall	01584 890874
Thurs 20 th		BLACK WHEELIE BINS AND RECYCLE BOXES EMPTIED TODAY		
	10.30am	Rock Pathfinders meet at Island Pool, Cookley. PAGE 31		
Fri 21 st	8.00	Bingo Night at Doddington Village Hall	Sonia Pearsall	01584 890874
Sat 22 nd		Clows top to Bristol. Picking up in Cleobury. PAGE 39	Mrs Gregory	01584 891464
	7.00	Harborough Singers at St Mary's Church, Bridgnorth. PAGE 9		
	7.30	Flicks in the Sticks, Parish Hall. Tom Hanks in "Bridge of Spies"		
Mon 24 th	9.00	SA Fitness classes start at the Parish Hall. PAGE 31		
Wed 26 th	10.00am	CoCo Coffee Morning, Market Hall		
	10.30am	Charity Bridge for Alzheimers, Parish Rooms, Blakedown. PAGE 9		
	7.30	Clows Top Gardening Club, Victory Hall, Clows Top. PAGE 7		
Thurs 27 th		GREEN WHEELIE BINS EMPTIED TODAY		
	7.30	Open Mic Night at the Sports & Social Club. PAGE 23		
Fri 28 th	8.00	Bingo Night at Doddington Village Hall	Sonia Pearsall	01584 890874
		AND LOOKING FORWARD TO MAY.....		
Wed 3 rd	10.00am	Walking for health start out from the Sports Centre, Love Lane.	Alan Kimber	CM271 754
	8.00	Whist Drive at Doddington Village Hall	Sonia Pearsall	01584 890874
Thurs 4 th		LOCAL ELECTIONS. PLEASE USE YOUR VOTE		
		BLACK WHEELIE BINS & RECYCLE BOXES EMPTIED TODAY		

ADVERTISING YOUR EVENT IN THE CLARION

Entering brief details of any local event on these pages is free of charge. You just need to send brief details to the Editor (contact details on Page 63) and we will happily give you a mention in both the editorial pages and the Social Calendar.

If you prefer to make more of a splash and take a paid advertisement we are naturally happy to help. We do try to cover as many local events as possible, but the editorial 'team' for such work is one elderly man, so there are limits to how much we can do. But if you want to send a report about your own efforts we welcome such contributions, with the proviso that they are subject to editing where necessary. Space is always at a premium on these pages, so keep it brief.

Wild Meadow Boarding Kennels

Give your dog a holiday



- Guaranteed Daily Walks
- Heated & Air Conditioned
- Licensed & Insured

Call Kate & Rich on 01584 890327 or 07967 491428

Opening hours: 8am-11am & 4pm-6pm

Hopton Bank, Cleobury Mortimer, DY14 0QF



First choice for all your motoring needs



- NEW FORD CAR AND VAN SALES
- APPROVED USED CAR AND VAN SALES
- ALL MAKES SERVICING AND MOTS
- PARTS AND ACCESSORIES

- CONTRACT HIRE FOR BUSINESS
- CAR AND COMMERCIAL RENTALS
- SELF STORAGE FACILITIES
- MOTABILITY AGENTS



169-171 Newtown Road, Malvern WR14 1PJ
01684 212361

Worcester Road, Kidderminster DY10 1JB
01562 549836



Spring Lane South, Malvern WR14 1AT
01684 212428

brookhire.co.uk
hillsford.co.uk



Worcester Road, Kidderminster DY10 1JB
01562 549725

hillscontracts.co.uk
hillselfstore.co.uk



Spring Lane South, Malvern WR14 1AT
01684 210530

Worcester Road, Kidderminster DY10 1JB
01562 549716

watch | like | tweet   

HIS & HERS Dog Grooming Parlour

All breeds and
Cross breeds professionally
Trimmed and Groomed



J. A. Guest

Tel: 07790 796 027

David Ward firewood

Do you need a dependable consistent quality
supply of Hardwood and Softwood Firewood?
Cut & Split to suit and delivered in breathable
1.2 cubic metre bags so no need to restack.

Small delivery vehicle fitted with
crane can deliver to most situations.
David is happy to discuss your requirements.

Mobile: 07866 441154
email: david@dskw.co.uk

Ever After

- Breakfast club
- After school club
- Holiday club
- "Forest schools" outings



- 15hrs education funding
- 24U funding
- Age ranges: 3 months to 11 years

Day Nursery

Cleobury Mortimer

Please contact us on 01299 272 777

Or Call in to see us anytime.

Friendly, Caring Environment for the Community

Alan Smith Aerials

Digital TV Installations.

Freeview aerials fitted and distributed around the house.

Freesat box, dish, and cable supplied and fitted. One off payment, **No contract or subscription required.**

Extra points, Repairs, New fits, Set ups, Multi room.

All work is carried out by a **Local**, fully qualified and insured installer.

01299 270007 or 07970 675728



This month has seen a large increase in the number of incidents relating to animals. There have been multiple reports of dogs acting aggressively towards passers-by and unfortunately some reports of them attacking both other dogs and people. These reports are being dealt with individually and where possible we will look at taking action. These incidents are likely to affect Cleobury's crime figures for the last month with dog aggression being classed as anti social behaviour and where a dog has bitten, it is classed as an assault.

I would ask all animal owners to ensure you are capable of appropriately controlling your animal if you take it out in public. If you can not control the animal please ensure that it is always on a lead and if necessary a muzzle is used. Failure to comply with this could result in a dog control order or potential criminal convictions. If you feel that a dog is being aggressive or is a danger please report it via 101. This also applies to failing to remove dog faeces.

It has also been reported that a number of cats have been poisoned around Cleobury recently. I would like to advise people that this is potentially linked to the use of antifreeze in

water features. Although if anyone suspects foul play, please contact the police.

The Safer Neighbourhood team are currently working along side a PCSO from Shrewsbury police station in delivering a series of lessons in Lacon Childe School regarding healthy relationships and "banter". So far these lessons have been very successful. I would ask that if your child is taking part in these lessons you support it.

Another subject never far from local policing is parking around schools; whilst it is rarely reported it is frequently commented on. We have been trying to get around schools and so far have been pleasantly surprised by the results. Please when collecting your child from school consider those who live in the vicinity of the school. They may require emergency access to their drive and when parking on the road please ensure there is enough room for a fire engine to pass should it need to. Walking a little bit further to drop your child is a small price to pay.

If you wish to get in touch please contact ch.snt@westmercia.pnn.police.uk if you wish to report a crime please use the 101 service or in emergencies 999

INFINITE ELECTRICAL SOLUTIONS

For all your electrical needs:

House rewires

Fuse board upgrades

Electric showers

Need an extra socket or light installed?

No job too small

For a FREE quote

Call Lloyd 01584 811184



More Clarion Smalls



Domestic oil-fired boiler breakdown & maintenance services.

27 years' field-service experience with leading UK boiler manufacturer Worcester Bosch.

Donovan Taylor

Tel: 01299 828670 or 07807 837040

donovan.taylor@sky.com

www.greenstar-boiler-repairs.com

Caring about your environment and providing an honest, professional & reliable service you can trust



Jet Washing Services

We clean and restore outdoor surfaces at an affordable price.

- Decking
- Patios
- Brickwork
- Driveways
- Fences
- Outdoor furniture

For a free quote call Luke on 07443 039608, or email shropshiredirtblasters@gmail.com

FALCO HEATING

The Solid Fuel Specialists

GARY HARDING - HETAS registered

Old Hall Farm

Clows Top

Worcs. DY14 9HE

T: 01299 832030

M: 07896 685 947

FALCO HEATING@BTINTERNET.COM

WWW.FALCOHEATING.COM



A.B. Plastering
Plus Traditional Lime Plastering

Adrian Booton
PLASTERER

4 Severne Green, Bayton
Nr Kidderminster, DY14 9LL

Tel: 01299 832 838

Mobile: 07974 582 524



Soft furnishing and
Interior Design Services

Masquerade
Fabrics Limited

01299 271 680

36 High Street Cleobury Mortimer near Kidderminster
Worcestershire DY14 8DQ

Retailers for Sanderson, Harlequin, Monkwell
Crowson and many more...

Comprehensive design, measuring and fitting service.



Natalie Taylor Dip CFHP MPS Pract.

Specialist Foot Health Practitioner

Specialising in:-

- In-growing toenails
- Fungal infections
- Nail trimming
- Verrucae
- Calluses
- Corns

All from the comfort of your own home.

If you would like to make an appointment,
please call on **07779 113982** or **01584 890112**

Hammered 'n' Plastered

Professional Plastering & Carpentry Company

enquiries@hammerednplastered.co.uk

07957166364



www.hammerednplastered.co.uk

BEV'S SPRAYTANS
Mobile Spray Tanning Service

Sienna X

Fake Bake

Skinny Tan

For information and appointments

call: Bev 07977 863 799



No news yet from Shropshire Council about the responses (or result) of their Bus Strategy but I see from the latest Conservative local newsletter that our County Councillor Gwil Butler sits on the board of the RSN (Rural Services Network) for Shropshire that aims 'to send a clear and loud voice to government in support of our rural communities' which includes public transport funding issues. Unfortunately, this vision does not appear to be shared by the new Transport Minister, Andrew Jones, who recently told a bus conference 'An industry which requires public subsidy is not an industry which has a healthy, robust, and sustainable future'. This may not be a problem in London (although even there, evening and Sunday services would struggle without support) but most rural bus routes could not run without a subsidy and this would be a recipe for disaster for those without access to a car. Oddly, the same argument does not seem to apply to the railways, which the government happily subsidises, or the aviation industry which is under taxed and not required to pay for the pollution it causes. Perhaps rural bus passengers are not considered important enough to be given a similar bung. However, they do have votes...

Back on the 2L, The usual run of breakdowns continues with several no shows and delays. One early service to Kiddy struggled as far as Bewdley before grinding to a halt wreathed in smoke, apparently from the clutch and with the passengers opening all the windows to let it out. At least one youngster was looking a rather odd colour by this time... Luckily a 2 service was following behind and picked them up without too much delay. The driver then asked the transferring passengers if everything was OK which produced a response which could not possibly be repeated in a family publication. Bewdley seems to be jinxed as other problems

have also occurred there. The latest row concerns a property company which wants to build houses on The Lakes Road and has proposed that the 2/2L be rerouted to give them better access. However, this would involve the service going down even narrower back streets than it does now so the suggestion is that yellow lines be introduced preventing those residents from parking outside their houses. Not surprisingly, this proposal has not been well received.

Another Worcester bound user who misses the fact that the 2L and 303 services no longer co-ordinate, has developed a strategy which involves driving to Hartlebury and parking then jumping on the 303 into Worcester. Unfortunately, this only works if the 303 turns up – which it didn't. At least not for 45 minutes when the driver explained that it was a relief service due to the original bus breaking down. The return service was little better with the vehicle making some very odd and worrying noises. It did make it as far as Hartlebury but whether it got all the way to Kiddy is not known.

However, there is always someone worse off than you are: The inhabitants of a remote Spanish village, La Torre d'Orista, near Barcelona, have just one bus a year which arrives on the first Monday in March. They were awaiting its appearance with some excitement when they spotted a notice saying it had been cancelled... Apparently the reason given was the fact that few locals use the service due to the high ticket price of about £5.20.

No more news yet on any replacement for Diamond on the 2L. I will make further enquiries and let you know what I discover. However, as promised last month, some details of a radical new Diamond initiative have now been revealed and should appear somewhere in this issue.

Steve Todd



You never forget the day you

Pass your driving test

Introductory lesson free!

Your local driving Instructor 0789 67 41041



More Clarion Smalls

Health Professional
Registered Chiropodist



Janet Manley

MSSCh., MBChA
BSYA(reflex) Reiki Master

Specialist in Reflexology & Reiki Healing

Cleobury Mortimer based **01299 272841**
Home visits 15 mile radius **07805 268439**

D Painter - Painting and Decorating
Your local friendly Painter and Decorator.

Ex British Forces professional,
hard working and reliable.

Free quotes, reasonable rates,
no job too small.

Please call Darrell:

01299 271838 or
07854 770 604

Terence Montague

Interior and Exterior
Painter and Decorator



Stottesdon
01746 718 742
07787 124 304

Washing Machine
Repairs and Sales

JULIAN BREAKWELL

Telephone 07791 633 746

Repairs to all makes, including
Bosch, Hoover, Zanussi and
Hotpoint

NO CALL OUT CHARGE
FIXED LABOUR COST

SIMON CARTER

PROFESSIONAL PAINTER AND
DECORATOR

PLASTERING, TILING, COVING AND
GLAZING

5 LOVE LANE, CLEOBURY MORTIMER

TEL: 01299 272868

MOBILE: 07815 483 029

KNOWLE SPORTS SALES

Tenbury Road, Clee Hill.

8.00 to 11.00am

The First Saturday of
Every Month

STILL WANTED: Good clean donations.

Collections: 01584 891249

Enquiries: 01584 890644

Seasoned Oak Logs For Sale

Free Local Delivery

Also Mixed and Softwood Available

Tel: 07976 895 267

01584 890 795

K Phillips & Son Groundwork

E: kphillipsandson@yahoo.co.uk

Piano tutor
Francis Engleheart

School-aged or adult
students, beginner or
advanced. Based in Kinlet,
but I can come to you.
Some day and after-school
spaces available.

07710 288526 • fengleheart@hotmail.com

PROBLEMS? THIS MAN CAN HELP



Gordon Lines has crammed a lot into his life, learning a great deal as he progressed. 14 years in the RAF, where he worked on counter intelligence, close protection of VIPs and anti terrorism. Plus ten years in a variety of jobs in South Africa.

You could call him a hard man, but he applies the lessons life has taught helping others. He and partner Diane, herself a nursing trainer, run the 4Ever Wellness Centre from their new home on Tenbury Road, offering a wide range of aid and tuition

to help troubled people move on.

Like the 40 year old man with a very troubled history from childhood. Three years later he has the self confidence to hold a post as security officer at a busy hospital. What Gordon did was bring out the abilities that a life of neglect had buried.

Gordon's ability to talk about complex treatments reflects a hunger for learning, and he can quote a string of qualifications. But look at the alpacas and chickens in the garden and you realise there's a gentle side to this man; "Children love alpacas and chickens. And lonely people will often have an animal as a companion."

He offers life coaching to help with any form of pressure, therapy and counselling to help with illness, depression and other mental issues. And Intervention Therapy, aimed at businesses, to save time and money dealing with Mental Health at Work issues. Call him for details.

01299 211097 or email
[gordon@4everwellnesscentre.co
m](mailto:gordon@4everwellnesscentre.com)

STOTTESDON W.I.

The year started on a positive note, with a number of new members enrolling. We had a seamless transition to new leadership as Helena Hale took up her role of President. Laura Grey has taken us into the 21Century, minuting meetings on-line for our instant perusal.

We have had two lively meetings, with remedies from Neal's Yard last month, and our Open Evening attended by around 40. All fascinated by John Swift's account of the early days of his family bakery. John and his family are constantly innovating with new flours and techniques (I recommend their Spelt and Shropshire Brown loaves) It was an education to learn about changes to rural life as seen through the eyes of the local baker. John has found himself exploring the history of the baking industry through his recent appearance on BBC's Victorian Baker series.

Do join us for a meeting soon:
April 19th: CPR and
Defibrillation: Duncan Turner &
Bill Brown at Chorley Village
Hall , 7.30 p.m. *Marian Wootton*

MORE JOB AND VOLUNTEER OPPORTUNITIES

A Temporary Post at the Renowned Burwarton Show

Office Assistant required June-August.

Computer literate, able to multi-task, mixed duties.

Contact: info@burwartonshow.co.uk

VOLUNTEERS WANTED

Shropshire Rural Communities Charity is looking for volunteers to act as Relevant Persons' Representatives to support people in Care Homes who have an authorisation to deprive them of their liberty and don't have anyone suitable to act as their representative (usually it would be a family member or close friend). The Representative would provide contact and support - in the region of 13 to 26 hours a year - and help the person voice any concerns they may have.

For more details, contact Nickie Edwards at Shropshire RCC on 01743 342165 or email

nickie.edwards@shropshire-rcc.org.uk

**DOMESTIC GODDESS HOME
SERVICES**

*I will tackle any job with care and pride!
I specialise in general household chores and
de-cluttering of homes.*

I am very reliable.

CRB checked - References available

**Contact Julia anytime on
07867646574/01299 832297**

M D Taylor

Kitchens/Bathrooms

Fully Fitted

**Including all electrical,
plumbing and tiling.**

**Call David on 01299 832903
or 07973 848618**

**A Mini Box Small Ad like this costs just
£16.00 for six months or £30 for twelve.
A good way to test how well the Clarion
can work for you.**

t. 01299 823 986
m. 07467 946 087

ReWYRE
electrical

Domestic & Commercial Electrical Services

www.rewyreelectrical.co.uk

@rewyreelec

- EMERGENCY CALL OUT SERVICE
- ALL ELECTRICAL SERVICES OFFERED
- FREE NO OBLIGATION QUOTE

We are fully accredited and supported by:

NAPIT

TRUST MARK



LES HALL

◀Window cleaning service▶

01746 861752

—Established 1986—

Computer and Laptop

Repairs.

No fix No fee

CCTV & Access Control

Jenpac ICT Solutions

01746 860297

www.jenpac.co.uk

Established 2005



Home from Home Animal Sitters



•Dog walking

•Pet sitting and holiday cover

•Farm animals & smallholdings

•Horses, including mucking out, feeding & exercising

Professional, experienced & caring service. Insured & DBS checked.

Email: homefromhomeanimalsitters@gmail.com



Tel: 07714464537

Web: homefromhomeanimalsitters.my-free.website



ALAN PRICE DIRECT TRAVEL

**PRIVATE
HIRE
TRAVEL**

**AIRPORT
TRANSFERS**

**LOCAL &
LONG
DISTANCE,**



**COURIER
SERVICE**

**FRIENDLY &
RELIABLE**

**FULLY
COUNCIL
LICENSED**

**Tel: 01584 890014
MOBILE: 0773 3079679**

E.PURSLOW & SON LTD

Stone, Gravel, Cement Supplies

Approved Coal Merchant

Calor Gas Stockists

Tarmacadam Specialists

Car Parks and Driveways

Constructed.

TEL: 01299 270314

Local Piano Teacher

*Lessons for RSM Grades or Just for Fun.
Any Age Welcome, it's never too late to
learn.*

Reasonable rates

Electrician

Indoor/Outdoor Lighting Specialist
Repairs and Installations

No Job Too Small, Reasonable Rates

For an Honest and Friendly Service Please Call Mathew
Part P
Approved

**Tel: 01584 711553
Mob: 07974 638045**



The cacophony of birdsong on the forest edges announces that spring is here. Tomorrow morning I'll be joining in the annual deer census so I'm hoping that the dawn will be fine and melodious to compensate me for that last hour in a nice, warm bed.

April sees the arrival of summer migrants such as swallows, redstarts, chiffchaffs and blackcaps, and we eagerly await the evocative call of the cuckoo. This seasonal explosion of song is a way of establishing the territories in which breeding pairs will nest and find the food needed to rear their young. The nature of the territory depends on the habitat which that bird needs: some preferring heather and young birch, for instance, while others find food and nesting holes in mature oak trees. The size of the territory depends on the abundance of resources and the pressure of competition from the neighbours. To attract a good number and variety of birds there needs to be a patchwork of different habitats with the range of tree species and ages of growth present in a well-managed woodland. As Wyre has broadleaved and coniferous trees with areas of wetland, heathland, pasture, orchards and gardens all intermingled it offers a relatively attractive home for resident birds and summer visitors.

As I have mentioned in these articles before, the national picture for woodland birds is far from encouraging, with an overall reduction in numbers of over 75% since 1970. The wood warblers are becoming very scarce in Wyre: they, like the chiffchaff, nest in low shrubs near the

ground and are very susceptible to disturbance. Though the major factor in their decline may be the loss of their winter habitat in Africa it still behoves us to do what we can here to conserve this delightful summer visitor.



A rare sight today, the pied flycatcher.

I remember in the early days of the Discovery Centre that a pied flycatcher nested in a bird box at the back of our original forest classroom: it was a good choice as there used to be a small pond there for pond dipping and many insects would have been attracted to the water. I haven't seen a pied flycatcher since, and again, changes in winter habitats in Africa plus climate change seem to be implicated. More bird boxes, in a variety of different situations, can only be a good thing.

And by the way, dear reader, I've started to finish my garden pond with pebbly, rocky and vegetated edges and hope the amphibian residents will be happy with the result as well as the human ones!

Linda Iles



We control:

Insects Rodents
Mammals Birds
Electronic fly killers
supplied & fitted

Mobile: 07890 048 362

**WYRE FOREST
PEST
CONTROL
AND
WILDLIFE
MANAGEMENT**



All work guaranteed
No call out charge
Discount for O.A.P's
Free survey and quotation

Office: 01562 747 210

www.wyreforestpestcontrol.co.uk

Cleobury Mortimer Golf Club

The 3 Month Taster Membership

Enjoy the benefits of 7 day membership with
our Special 3 Month Taster Package for just £150

45min Lesson with Amy Millward
or David Pain Included.

The 3 Month Membership is for April, May and June

Terms and Conditions apply.

Voted the most picturesque golf course in Shropshire
(Midlands Golf Magazine 2017)



Contact Dave or Tom on 01299 271 112 or
email pro@cleoburygolfclub.com



**Calling all business women living in the West
Worcestershire / Wyre Forest area.**

Join our friendly group to network with like-minded business
women.

Improve your skills, boost your confidence and get new business.

For more information, contact Steph :
☎ 07895 623048
Facebook: @wyrewirenetworking

We meet at the **Faded to Fabulous**
Tea Rooms in Kidderminster
10am-12pm
on 2nd Thursday each month.

Join us for support, advice, great
coffee and a chat.

Kim Stanley
HEALTH & BEAUTY

0 1 2 9 9 2 7 1 8 0 0

Spraytan Non-Surgical Facelift Electrolysis Aromatherapy Waxing Reflexology
Gel Polish Spa Find Facials Jessica Nail Care Hot Stone Therapy Hopi Ear Candling

Enquire instore for full range of treatments available. Kim Stanley
IHBC - BABTAC

30 . High St . Cleobury

REIKI

**Feeling Anxious, Stressed or Low ?
Reiki Soothes, Relaxes and Comforts.**

www.katejones-reiki.co.uk

Tel. 01584 890284

30 High St

Kate Jones

* Over 20 years experience in Reiki (Reiki Master)

PHYSIO

**Chartered Physiotherapist, Emmett
Practitioner, Acupuncturist** (pain relief),
Pain, Stiffness, Musculoskeletal Problems,
Injury, Neurological Conditions, Lymphatic
Drainage, Sinus Congestion.

Tel. 07905 766729

30 High St

Jill Sharp

SRP, MCSP, BSc(Hons)

Tel: 01746 861612

Amanda Horton Mobile Computer Services

Email: mandhorton@gmail.com

Text: 0796 461 4185

OVERWHELMED BY TECHNOLOGY AND DON'T KNOW WHERE TO START?



- Email
- Social Media
- Researching family history
- Online Shopping

I offer computer lessons and services in the comfort of your home and can walk you through at a pace that suits you

Reasonable hourly rates

CHARTERED BUILDING SURVEYOR

Paul Rosevere MRICS, BSc (Hons)

- FULL DESIGN SERVICE FOR BOTH DOMESTIC AND COMMERCIAL PROPERTIES
- NEW BUILD, EXTENSION AND ADAPTATIONS, LISTED BUILDINGS
- DRAWINGS, PLANNING PERMISSION AND BUILDING REGULATIONS
- TENDERING, PROJECT MANAGEMENT, CONTRACT ADMINISTRATION
- CONDITION SURVEYS, FAULT DIAGNOSIS, SCHEDULES OF WORK



**WE OFFER A PROFESSIONAL, LOCAL SERVICE.
FOR FREE INITIAL ADVICE AND GUIDANCE CONTACT PAUL.
Mob. 07882 804 229, Tel. 01299 270777**



EOS Contracting

EOS are pleased to announce that we are now able to offer our professional tree services for domestic and commercial customers

Tree works undertaken include, but are not limited to:

Reductions—Dismantling—Pruning—Planting—Stump Grinding— Tree Surveys

Please feel free to contact us to discuss your requirements

TEL : 01531 650012 / 07772 751536

Email: office@eoscontracting.co.uk

PROUD SPONSORS OF THE CLEOBURY MORTIMER RUGBY CLUB



Luxury for your cat, peace of mind for you

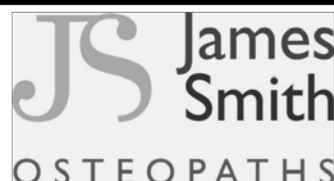
- Vaccinated cats only
- “cuddle time” spent with every cat, every day
- Individual likes & dislikes catered for
- Inspection invited
- The cattery of “First Choice”
- Tranquil environment
- Family units for cats from the same home
- Protected by security system
- Full height sneeze barriers
- Spacious, heated chalets
- Bright & airy
- Completely protected from the weather
- Spotlessly clean

Catsley View, Meaton Lane, Kinlet, DY12 3DD, call 01299 841 270

Registered Osteopath.

Experienced with a wide range of injuries & medical conditions including :-

- | | | |
|--------------------------------|-----------------------------------|---------------------------------|
| • General aches and pains | • Headaches arising from the neck | • Fibromyalgia |
| • Joint pains | • Circulatory problems | • Sports injuries |
| • Arthritic and rheumatic pain | • Lumbago | • Muscle tension and imbalances |
| • General back and neck ache | • Sciatica | |
| | • Neuralgia | |



James works alongside Sue Brown at Cleobury Chiropractic in the High Street.
If you would like an early-morning or evening appointment then please call James on: 07506 287191.

MICHAEL TURNER



The Eureka Jazz Band led the hearse from Saint Mary's Place to the Parish Church for friends to say their final farewell to Michael.

It was a wet, overcast day on March 22nd when Michael Turner was laid to rest, and his friends gathered in the Parish Church to say their sad farewells.

A quiet, gentle man who was a regular sight walking slowly around the town, he spoke only when spoken to, his shyness and near blindness no aid to social awareness.

POETRY PLEASES

The Poetry Club that gathers in the Library every month, is gently growing, with the promise of two new faces at the late March meeting. The fact that the art form is actively

recognised on BBC Radio Four does encourage people to ask just what the local association does. The answer is very simple - you can read your own or a favourite author's verse, or just sit and listen. Last Monday of the month, starting at 7.30 and ending when the members choose. The sharing of a bottle of wine does add to the friendly atmosphere.

Which is a good point to introduce you to the work of Neen Savage's Parish Poet. This unidentified person pens rhymes about the Parish Council there and finds the work frequently torn down. We thought this sample from July last year was too good to throw away:

"The Annual Parish Meeting was a bit of a shame

The Parish turned out, but no councillors came!

They chose the date and invited us all

To join them, for the evening, at Neen Savage Hall.

The parishioners arrived, to listen and share

Their thoughts and worries with people who care.

But instead of a welcome and hospitable greeting,

Our elected councillors disregarded the meeting.

So the residents sat and discussed what to do

To bring back harmony between old and new.

But the message is clear and we can guess what it meant,

They have no time for us - who they represent.

DEFIBRILLATOR ON THE HILL

An emergency facility recently installed at the Hopton Bank Service Station in Doddington is a provision that could be a life saver. The big advantage with this one is that it's on the forecourt of the garage and is available 24 hours a day.

The garage staff have been trained in its use - top marks to them for such a worthwhile contribution to the community - but it's also accessible when they are not there. You simply make a 999 call on your mobile, say where you are, and the operator will give you the code necessary to open the cabinet and get the defibrillator out.

This is a move on from the original idea of units being kept on business premises. But those places are not always open, while the Doddington unit is there and available when the garage is closed. We just hope that it's never needed.

A FLORAL SYMPHONY

Church Flower Festival

16th - 19th June. 11.00am to 5.00pm

St John the Baptist, Mamble (off A456)

Refreshments, local art and plant sales.

Open Gardens Saturday and Sunday

£5.00 admission (Under 16s Free)

Information: 01299 832796 or 823793

Help At Home is a service offered throughout Shropshire by Age UK to Over 50s. People often need help to remain independent with a good quality of life.

We offer help with shopping, walking dogs or light domestic jobs around your home, including laundry, ironing and gardening. After an initial visit to discuss the help you require and the cost, we offer a trained support worker who will start visits on a regular basis.

To discuss your need with a member of our staff, just call **01743 233788**

KINLET C OF E PRIMARY SCHOOL

Preparing for the future in a caring
Environment



- Large field and playground
- Caring Ethos
- Broad and balanced curriculum
- Breakfast and Afterschool Clubs

www.kinlet.shropshire.sch.uk
admin@kinlet.shropshire.sch.uk
Telephone: 01299 841210



NO TIME TO DO YOUR IRONING?
SICK OF THE HASSLE OF YOUR LAUNDRY?
LET ME, **THE IRON LADY**, JEAN BASHAM
TAKE AWAY THE STRESS AND DO IT FOR YOU!
A FULL LAUNDRY AND IRONING SERVICE
ESTABLISHED FOR 15 YEARS
THE **LOWEST RATES AND BEST SERVICE** AROUND!
CALL 01299 271 546 OR 07792 813 774
EMAIL JEANTHEIRONLADY@GMAIL.COM
"FROM CREASED AND MESSED TO CLEAN AND PRESSED"

M D Taylor
Electrician/Plumber
No job too small or too large
NICEIC Registered

Call David on 01299 832903
or 07973 848618

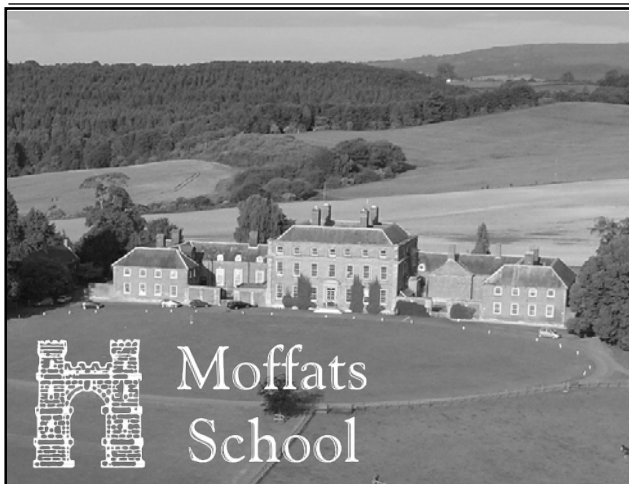
Lower St Garage

7 Lower St, Cleobury Mortimer. DY14 8AA

- M.O.Ts on cars, motor bikes & small commercial vehicles
- Tyres, Tyre fitting,
- Puncture repair and Tracking.
- Diagnostics, Air conditioning
- Welding.
- Service and Repairs to most vehicles.
- Delivery and Collection Service Available



Contact The Team at Lower St Garage on: 01299 270208



Thinking about your child's education?

Moffats, your local prep school, welcomes children from the ages of 3-13.

A happy family school in an exceptional setting.

Extras include riding in our 100-acre grounds.

Funded Kindergarten places: ages 3 & 4.

moffats.co.uk • 01299 841230

Kinlet Hall • DY12 3AY

On the B4363, 5 minutes from Cleobury Mortimer

freshen up your living space...



WE GLEAM

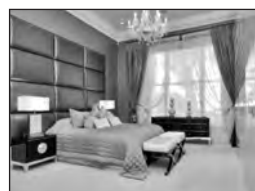
professional cleaners & re-upholsterers
we don't just clean it...we gleam it!

we welcome all enquiries 07961 712 683

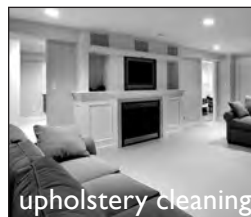
www.wegleam.co.uk email wegleam4u@gmail.com



re-upholstery

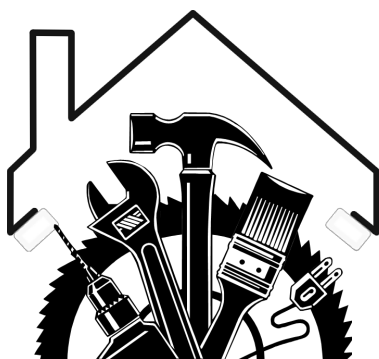


carpet cleaning



upholstery cleaning

Call in the experts.
We Gleam has 21
years experience
& 100s of satisfied
customers.



Michael Coombes Roofing & Building Maintenance.

Complete Re-roofing, Roof repairs, Pointing & Chimney repairs.
Slabbing & Brick work
Wall & Floor Tiling
Painting & Decorating

Over 20 Years experience in the Cleobury area.

Call Michael on 07854 047413



Take the worry out of organising that special event...

Have your own, homemade, afternoon tea delivered and set up for you in a venue of your choice. Served on fashionable vintage china with tiered cake stands, complete with bunting, flowers, napkins and tablecloths, so that you can relax and enjoy your event.

Contact us to discuss your individual requirements for:
Afternoon Tea Parties, Weddings, Baby Showers, Christenings,
Birthdays, Anniversaries etc...



Mobile: Tracy & Nick Price- 07515 644865 | Facebook: Vintage Delight | Email: vintagedelight@outlook.com

CLEOBURY MORTIMER PARISH HALL

‘FLICKS IN THE STICKS’

7.30, Saturday April 22nd

‘BRIDGE OF SPIES’

A Stephen Spielberg production, starring Tom Hanks, telling the story behind the 1960 downing of a U2 spy plane and the negotiation of the exchange of pilot Gary Powers for a convicted Soviet spy.

TO BOOK YOUR EVENT AT THE HALL CONTACT JAN ON 01299 271070

**Your Parish Hall - the Town's
Best Value Venue.**



Valley Property Managers

your personal letting agents

01299271430 | 07751769315 | info@valleypropertymanagers.com | www.valleypropertymanagers.com

Are you looking to rent your property with a letting agent who will truly look after your investment?

Being a family run business means we have the **time** and **energy** to dedicate to each of our clients. Our aim at Valley Property Managers is to offer each of our clients a personal and tailored service. Not only will we look after your investment as if it were our own, we also aim to deliver top quality service at the lowest prices.

SPRING OFFER

We are now offering 8% commission (usually 10%) for the first six months of any new agency agreement. We are also only charging £50.00 (usually £195.00) in initial fees to start an agency agreement with us.

Plus, there is NO VAT TO PAY on any of our fees! Get in touch to arrange your free, no obligation market appraisal.

01299271430 | 07751769315 | info@valleypropertymanagers.com | www.valleypropertymanagers.com

Paul French adds to his stories about local men and their involvement in the 1914 -18 Great War. This month he looks at the Rippard family.

Large families were common at the end of the 19th and early 20th centuries. Often all of the sons in a family would have signed on to serve in the Great War. Shall we consider this for a moment.

One son enlists and whilst parents may have been proud, there would have been concerns, fears and reservations. The more sons there were the greater these burdens would have been. So in 2017 we can only surmise how Robert and Mary Rippard felt when they thought about their seven sons who went off to serve.

This piece deals with two of the brothers who died directly either as a result of wounds or of long term problems caused by their service. The other five came home.

Albert George Rippard was born in 1887 at 88 High St Cleobury Mortimer. In 1891 the census records him living with his brothers in Upper Town in Cleobury. The family consisted of Robert J aged seven, John six, twins Joseph and Samuel aged five, Frederick two and Richard aged two months. Robert was recorded as having been born in Nova Scotia!

In the 1901 census Joseph and Samuel are not recorded, but Mary Elizabeth born in 1893 is. Albert is present and recorded as a "tool carrier". He enlisted at Bowmere Heath Shropshire in the King's Shropshire Light Infantry in 1906 and at some stage between 1906 and 1911 found himself in India because he is recorded as "absent" in that year's census. He shipped to France and is recorded there in December 1914 and subsequently to Salonica. From an earlier piece we know that Salonica was plagued by mosquitoes and so it was that he was shipped home with malaria as a result.

Albert was transferred to Labour Corps and worked for a farmer in Ellesmere. This was due to his being classed not suitable to serve at the front. However farm work at that time was very physical but essential to the war effort, so Albert certainly continued to "serve". He died in Prees Military Hospital of pneumonia on 11th November 1918.

In 1903 Robert then aged 19 and living in Shrewsbury enlisted in the KSLI and was

probably in the Army Reserve at the outbreak of war. Mobilized on 5th August 1914 he landed in France on the 10th September 1914. Hooze is a small village close to Ypres in Belgium. It saw intense fighting from 1914 to 28th September 1918 when it was finally retaken by the British after changing hands many times. It was during one of these "changing of hands" that Robert died on 9th August 1914. Even in "quiet" times Allied casualty rates averaged 300 per day throughout the war at Hooze.

It is well known that both sides used mining techniques to get under opposing trenches and then detonate explosives to destroy positions. Hooze was no exception and on 19th July 1915 one of the largest explosions of the war was detonated by the Royal Engineers 175 Tunnelling Company. This allowed the Allies to retake the position. What was new was that in the battle for Hooze on the 30th July 1915 the Germans first used in earnest the flame thrower or "liquid fire " as it was known. The Germans regained the position on this day.

Robert was in the action attacking Hooze Crater on 9th August 1915 and it was here that he died. He is commemorated on the Menin Gate and on the Knowbury War Memorial. The flame thrower was a fearsome weapon and although during this action casualties were not high, the effect of the weapon was demoralising and a psychological success. The writer recalls a relative describing the horror of being confronted by a flame thrower during the retreat from Dunkirk in WW2...far more frightening than anything experienced before. We cannot imagine what it was like, apparently it was incredibly noisy apart from anything else.

Edmund Blunden in his poem 'Trench raid near Hooze' wrote 'Through the black reached strange long rosy fingers'. I would be happy to think that Robert with a great deal on his mind anyway did not experience those "long rosy fingers"

Thank you Robert and Albert.

Paul French

The Clarion is on the web, reaching around the globe. We have readers in Hong Kong, New Zealand the United States.

www.cleoburyclarion.co.uk

HOSKINS

FAMILY FUNERAL SERVICES & STONEMASONS

Making a difficult time easier

FUNERALS: 01299 879090 STONEMASONS: 07718900151

STOURPORT ON SEVERN - FUNERAL HOME WITH CHAPEL OF REST
107, THE BIRCHES, STOURPORT ON SEVERN, WORCESTERSHIRE, DY13 9NR

1ST FLOOR, THE MARKET HALL,
CHURCH STREET, CLEOBURY MORTIMER, DY14 8EX

TRADITIONAL
BESPOKE INC HORSEDRAWN
GREEN FUNERALS

AVAILABLE 24 HOURS

LICENCED MEMBER OF THE
BRITISH INSTITUTE
OF FUNERAL DIRECTORS

PROVIDING THE VERY BEST OF CARE



NEW MEMORIALS
ADDED INSCRIPTIONS
CLEANING & RESTORATION
GRANITE VASES
GRANITE HOUSE SIGNS
LASER ETCHED PHOTOS
OR IMAGES
QUALIFIED STONEMASONS

WWW.HOSKINSFUNERALS.CO.UK

 HOSKINS FAMILY FUNERALS



The Lamp Restaurant

15a High Street, Cleobury Mortimer, Shropshire, DY14 8DG

01299 272785 or 01299 271315

Fully Licenced and Air Conditioned

Serving Bangladeshi & Indian Cuisine



The Lamp Restaurant winner of Currylife award chef of the Year

Open 7 days a week from 6.00pm until 11.00pm

The Lamp's cuisine, inspired by Sylhet, the second city of Bangladesh, offers a wide variety of choice along with established favourite dishes and a selection of Chef's Specials.

The wide variety of starters and accompaniments chosen by our chef to complement your main course.

Takeaway service offers free delivery up to 3 miles for orders over £15.00.

Find us on Facebook: Lamp Inn Cleobury Mortimer

Newbridge Computer Services Tel: 01299 270701

- ★ Want a new computer?
- ★ Worried about what you need?
- ★ How to set it up?
- ★ How to transfer your data?

Well help is at hand!

We offer a complete service package with all our new computers to ensure you get exactly the right system, at the right price and completely hassle free from start to finish.

Buying a computer system from us couldn't be easier!

Also:

Spares & Repairs
Internet Connection
Security: Anti-virus etc.

Suppliers of



Computers

And:

Call out & onsite Repairs
Accessories
Wired & Wireless Networks

E-mail mike@ncs-tech.co.uk

website: www.ncs-tech.co.uk



07971 361901 or 01299 832484

**Complete Bathroom Installations
Bathroom Refurbishment or Repairs
Wet Rooms
Professional Wall and Floor Tiling**



For a quality and guaranteed service, call Stuart for a free quote
Highly Recommended / References available - see my reviews on www.freeindex.co.uk

FOR THE BATHROOM YOU DESERVE!

Boomerang
of Cleobury Mortimer
private hire travel

- Friendly, reliable service
- Local & long distances
- Fully council licensed (up to 12 passengers)
- Airport transfers
- Courier service
- All occasions catered for

Tel: 01299 271257, Mob: 07411 142755, Email: stuart.boomerang@yahoo.co.uk



Registered
Technician

30546

JOHN VAIL

Plumbing, heating and bathrooms
Installation of boilers, cookers and gas fires
In homes, park homes and caravans
Boiler servicing and landlords' certificates

GAS

LPG

OIL

Gas Safe and OFTEC registered

07971 624804

01584 890946

johnvail123@btinternet.com



536724

PODIATRY/CHIROPODY

Debby Luxton. HCPC Registered

**Treating and Caring for Feet
General and Specialised
(Verruca and Fungal Nail)**

www.ludlowpodiatrist.co.uk



OSTEOPATHY

Ian Luxton. GOSC Registered

**Treating Pain and Injury
Acute and Chronic
Head to Toe**

www.ludlowosteopath.co.uk

We are both highly qualified, very experienced and absolutely dedicated to providing our patients with the best quality care in our respective disciplines.

We have many testimonials from patients, some are on our websites and a couple to the right.

Middleton | Ludlow | SY8 3EF

T: 01584 823331

"I'm now free of discomfort due to the excellent and wholly appropriate treatment you have given me."

"We have greatly appreciated your attention and trusted your advice."

Mark Pearce

Landscape, Design and Rustic Garden Furniture

- Fencing
- Patios
- Drives
- Decking
- Garden Sheds
- Summer Houses
- Fence Panels
- Log Stores



And Much More

Top Quality Fully Treated Timber Products

Mobile: 07875425028

Tel: 01746718404



Vehicle sales & valeting

**DOES THE CAR NEED A SPRUCE
FOR THE WINTER?**

GIVE ASHLEY A CALL FOR A QUOTE

**FULL OR PART VALETS TO YOUR BUDGET
(BOOKING ESSENTIAL)**

Tel: 01299 271365

Mobile: 07710 913401

Guitar Tuition

- ◆ Experienced tutor based in Stottesdon.
- ◆ Teaching for 20 years privately and in schools.
 - ◆ One to one or shared lessons.
- ◆ Member of the Registry of Guitar Tutors and Musicians Union.
- ◆ All ages, styles and abilities welcome.
- ◆ DBS checked, full liabilities insurance.

Contact: MARK.CHECKLEY@sky.com

01746 718636 - 07708 386433

Carolyn & Keith Balmer support a number of people who are involved in charitable activities. So we are always looking for soft toys and teddies for the "Teddy Trust". www.teddytrust.org.uk .

Also if possible new, or very good quality, pens, pencils, note books, school bits and pieces, anything that would be useful for deprived children.

Phone 07944234636



Nigel Hodgson MA Env. Man. DMS

Energy and Environment Consultant

Telephone: 07452 921 499

Email: nig.solutions@btinternet.com

Environmental cost, consumption & carbon reduction

Over 30 years' experience in energy/environmental management for small, medium and large organisations to reduce cost and increase profits.

Create your
own Original


CHARLTON
INTERIORS

Local Upholstery/Furniture Restoration

Call for a free estimate to restore your furniture
or view the Website www.charltoninteriors.com
to see a range of quality antiques restored and
awaiting your choice of top cover.

Tel: 01746 718285 or 07837609229
email info@charltoninteriors.com



MARCHES
PEST CONTROL

Pest control and wildlife management
Domestic - Commercial - Agricultural

Geoff Jordan

BPCA Qualified for all insects, rodents and wildlife

Mobile: 07971 866564

Email: info@marchespestcontrol.co.uk

Web: www.marchespestcontrol.co.uk

We cover: Cleobury Mortimer, Ludlow, Tenbury Wells, Leominster, Kidderminster, Bewdley, Bridgnorth, Worcester and surrounding areas

For all of your picture framing needs, visit

Cross House Arts
Picture Framing Gallery, Mable

incorporating

**Frames By
Design Ltd**

Cross House, Mable, Worcs. DY14 9JL
01299 832616 (opposite the Sun & Slipper pub)
www.pictureframes-uk.com
Open Wed. to Sat. 10:00am—5:00pm

Ring George or
Dean anytime
01299 832616

fairway

Accountants & Business Advisers

Proactive professional team available 7 days a week. Highly competitive fees.

Contact: Simon Hector 07896 439594 or Simon Connolly 07973 360456

Offices in Cleobury Mortimer & Stourport on Severn

Main Tel: 01299 822283 Email: team@fairway-net.co.uk
www.fairway-net.co.uk

Summer/Winter Sun Holidays
Cruises
Ski Holidays
Weddings and Honeymoons
City Breaks
Tailor-made Holidays
Flight Only
Theatre Trips
Heritage Day Trips

Tranquillity Travel

INDEPENDENT TRAVEL CONSULTANTS
EST 2003

Come in, WE'RE
OPEN



01299 400130

www.tranquillity-travel.co.uk
within the Mercure Hotel, Bewdley (free parking)
Find us on Facebook @TranquillityTravel

Fully ABTA/ATOL Bonded
First Class service from booking to return
24 hour emergency phone number
Experienced, well trained staff

Hands on Printing

**Print your own photographs on our SNAP LAB PRINTER
or we can do it for you.**

All Digital formats disc- cards or phones

Print sizes 6 x 4 5 x 7 8 x 6

Enlargements from 10 x 8 to 36 x 24 inches

Canvas prints from 16x12 to 20 x 30 inches

Prints from 35mm slides - Celebration Banners - Paper or Plastic

Colour Business Card s - Flyers - Raffle Tickets B-W or Colour copying

Most video tapes transferred to D.V.D.

Audio tapes and records to C.D.

Cine films to D.V.D.

Pass ports - Bus pass - Driving licence photos etc.

A selection of Photo Frames now available

43, High street, Cleobury Mortimer. DY14 8DQ Tele:- 01299-272757

Paul Harding



Tree Services

- Tree surgery and felling
 - Woodland thinning & maintenance
 - Hedge trimming & grass cutting
 - Supplier of hardwood logs, kindling and garden bark
 - NPTC certified fully insured. Domestic and commercial work undertaken.
- Tel 01584 890 993 Mob 07970 878 224**

Ruth Brunger started Tranquillity Travel 14 years ago for the best of reasons - she was unimpressed by the service she got from travel agents and was sure she could do better. At first she worked from home, keeping the overheads low and only needing room for herself, desk, phone and a growing range of catalogues and information.

In just two years she moved to a room at the Mercure Hotel on Bewdley's Habberley Road. A good sense choice, with free parking, lots of people passing the door on their way to the sports and gym facilities and the cafe just around the corner. The coffee's great, by the way.

So is the service, as we found out. Not long ago they helped a local school arrange a trip to New York. Great treat for the children, but when they arrived at the hotel there'd been a muddle over the booking and they weren't expected. Can you imagine being the teachers responsible for a large party of other people's children and no rooms at your distant hotel?

The 24 hours a day / seven days a week customer contact line at Tranquillity is rather a special one; it goes straight to Ruth's mobile. She got a call at 11.00pm and stayed on the line until 3.00 am when the matter was sorted and the children settled. In one teacher's words: "We couldn't have done anything without you." It's no surprise that school is a regular customer.

There's a happy atmosphere at this all-women office, each of the ladies with specialist knowledge of different countries and aspects of travel. And travel doesn't just mean picking up a

brochure and booking your dates; their special knowledge means asking you just what you're looking for and coming up with a range of options to tempt you, often with little bits of advice based on their own experience.



Ruth Brunger (left) and Philippa Brewell, Social Media Fairy and Historic Tour specialist.

They have one of the friendliest websites I've ever used, rich with stunning photos and every staff member's favourite places and experiences. Senior Consultant Emma Hall tells you her most memorable experience was jumping out of an airplane at 12,000 feet above Lake Taupo in New Zealand - maximum respect!

On the less exotic side, they organise trips to shows and special venues. Once more there's evidence of good thinking in the way they do. You park your car in the Mercure at no charge and there's none of that time wasting stopping along the way to pick up other members of the party. You just

get together, have an easy trip to wherever you've chosen and all get back together to collect the car and drive home.

There's almost no limit to what they can book for you, including weddings and family holidays. We talked to Philippa Brewell as Ruth dealt with a customer and she emphasised the advantage of your outing, whatever it is, being handled by someone who knows the ropes and will make sure any travel abroad is covered by proper insurance via recognised bodies ABTA or ATOL, whose service covers out of the ordinary problems like the ash cloud from Iceland that upset air travel over a huge area. When one of Philippa's historic UK trips is under way, to venues like Buckingham Palace or Chatsworth, she travels on the coach and exploits her social media knowledge to avoid any delays.

Ruth's clear aim on the day she started the business was to put customer satisfaction at the top of the priority list. The growth in the 14 years since that date, both in the number of customers and the range of travel available, suggests that she got it right and hasn't lost sight of the ambition since. It may sound a little old fashioned as a business plan, but happy customers come back for more and tell their friends about their good experience. Not old fashioned at all, just plain common sense.

Tranquillity Travel is on 01299 400130 and is open 9.30 to 5.30 Monday to Friday and 9.30 to 3.30 on Saturday. Doesn't suit you? No problem, just call and they'll fit in to suit you. It's a well established habit.

MAWLEY OAK TRAVEL



8, 16, 24, 28, 32, 35 and 53 seat vehicles
Available for hire for all Occasions

- * Airport and Seaport Transfers
- * Theatres
- * Sporting Events
- * Weddings
- * Schools
- * Dog & Horse Racing Events
- * Day Trips

PHONE NOW FOR A FREE NO OBLIGATION QUOTE : 01299 270 207

www.mawleyoaktravel.co.uk
enquiries@mawleyoaktravel.co.uk

MAWLEY OAK GARAGES LTD

- * Historic car specialist
- * Servicing & Repairs
- * All jobs undertaken
- * Exhausts
- * Diagnostics
- * Clutches
- * Mawley Oak Tyre Centre

*We offer a local collection & delivery service .Courtesy car available *(conditions apply)*



SPECIAL OFFERS

MOT, Oil & Filter change from **£99** *(conditions apply) **Free** MOT with Any Full service MOT'S ONLY **£42**

Call on 01299 270 207 and ask for the workshop OR Email at: Mikemawleyoakgarages@gmail.com

Mawley Oak Shop & Travel Office

Mon To Fri 9:00am—5:00pm

Selling Red Diesel, Coal, Logs, Kindling, Paraffin, Oils & Lubricants, Confectionary ,
Drinks, Cigarettes, Sandwiches

Mawley Oak WORKSHOP

**** New opening Time's****

Mon To Fri 8:00am—5:00pm

Tel Cleobury Mortimer 01299 270207

CLEOBURY MORTIMER SPORTS & SOCIAL CLUB APRIL 2017 ENTERTAINMENT PROGRAMME

OPEN MIC NIGHT

**THURSDAY
27th APRIL**

FROM 7.30PM

**ALL
PERFORMERS
WELCOME**

Club available for private hire
£50 non members
£45 members

**The Easter Bunny is
on its way!**

Join us for our Easter

Egg hunt on Good

Friday April 14th.

10.30am registration

11am start only £2.50

per child.

Please note that

children should be

supervised at all times.

"SKY AND BT SPORTS"
**"FORMULA ONE in China and
Bahrain"**

**CHECK OUT OUR NEW
FACEBOOK PAGE**
**Cleobury Mortimer
Sports&social Club**

Call us on 01299 271448

Pop in and see us

DIAMOND BUSES IN WORLD FIRST

At last, Diamond buses are moving into the 21st Century!. It has just been announced that they are to trial a revolutionary new type of electric bus and have selected the 2L route for the initial runs due to the difficult nature of the terrain which will create a more testing environment. Basically, the design builds upon existing EcoBus principles including the low emission version that Diamond already use from time to time on the 2L route and on which most of us have travelled at some point.

The new design, which is a joint venture between the UK and the USA, is said to be light years ahead of existing vehicles and incorporates a number of design features such as built in solar panels and regenerative braking as used on Formula 1 cars and which charges the batteries when the brakes are used. There are a number of other features including a monocoque body/chassis based on aviation technology and the use of advanced materials including graphene and carbon fibre which have been combined to create a very light but strong structure. The design has been tested in a wind tunnel to ensure it is as aerodynamically efficient as possible and is fitted with low rolling resistance tyres. No photo was available as the 'Clarion' went to press but the effect is said to be stunning.

The main power source is a bank of the latest Lithium-air batteries which are situated under the floor and which are said to provide three times the power for a third of the weight of the Lithium-ion units currently used on most electric vehicles. These are backed up with a small diesel motor at the rear for emergency 'get you home' use only,

resulting in very low emissions and should make the vehicle exempt from any current or proposed congestion or emission charges. Each wheel is powered by a separate electric motor which is a heavier duty version of those used on Tesla cars and this system gives better traction in slippery conditions enabling power to be fed to each wheel as needed.

However, the most radical feature is in the cabin where all seats are fitted with an adjustable pedal system which can be operated by passengers either using hands or feet to generate electricity which is fed to the batteries to keep them topped up. The amount generated is individually measured and, as an initial incentive, passengers will receive a full or partial refund on the cost of their tickets depending on how much energy they have produced. Naturally, anyone using an older persons or similar subsidised pass will not be eligible for a refund but will have the benefit of free exercise, thus saving them the cost of gym membership and improving their overall health levels. Anyone requesting special treatment as a result of a medical condition must produce a Doctors note to back up their claim. This feature has the added advantage that, in the unlikely event of both flat batteries and diesel engine failure, occupants will be able to pedal their way out of trouble.

No firm date has yet been set for the commencement of this trial but as a World first, it will no doubt generate a great deal of publicity and really put Cleobury on the map. More information on this initiative will be published when it is received.

Steve 'Scoop' Todd



SKELLERNS

DOORS & WINDOWS



- UPVC Fascias & Guttering
- UPVC Windows, Doors & Conservatories
- General Home Improvements
- Re-roofing & general building work
- Replacement Glass
- Patio Jet Washing



Free No-Obligation quote. FENSA registered company with years of experience

Call Mike on: 01886 812250 or mobile: 07814 577739

www.skellernsdoorsandwindows.co.uk

Elite Sweeps

Professional Chimney Sweep

& HETAS Stove Installer

- ✓ Prompt, reliable & friendly service.
- ✓ Cows and Chimney Pots fitted.
- ✓ Fully qualified and fully insured.
- ✓ Guild certificates issued after every sweep.
- ✓ HETAS Approved Installer.



Call Eddie

Tel. 01299 382222 / 07895 612915

www.elitesweeps.co.uk



Garden Design & Landscape Architecture

- * Female garden designer & qualified Landscape Architect.
- * Providing innovative Garden Design solutions and Landscape Architectural services.
- * Domestic and commercial clients, no job too small, all jobs considered.
- * For professional and friendly advice, please **call 07769 919 197**
- * **Call NOW for Garden Designs over Autumn/Winter...ready for Spring Build !!**



Quercus Landscapes Ltd

Find us on

BLOCK³ ARCHITECTS

Holly Cottage Baveney Wood Cleobury Mortimer Worc DY14 8JB

Whether it is a new build project, conversion or extension we provide creative and sustainable architectural design solutions from sketch design to completion

If you require assistance or advice on any building or planning related matter, please feel free to call me



Tom Rogers BA(Hons) Arch PG(Dip) RIBA T 01299 841111

M 07812 196 967

E tom@b3a.co.uk

W www.b3a.co.uk

IS THERE AN OBOIST IN THE HOUSE?



Conductor Michael Lloyd and soprano Alison Roddy take a bow.

A packed St Mary's church on a Sunday evening in March was slightly bemused when the conductor of the Birmingham Philharmonic Orchestra, Michael Lloyd, called the concert to a halt only three minutes from the beginning. The first oboe, Emma Cowper, had clearly been struggling to produce more than a handful of notes, and so Lloyd stopped the proceedings. A distressed Emma attempted to repair a couple of broken key springs during the hiatus, but without success, prompting the conductor to turn to the audience and say "I think

this is where I'm supposed to tell some jokes." He graciously gave Emma a few more minutes while he regaled us with a similar story from his vast concert experience, whereupon an oboist did appear from the audience. Nicky Brass who was scheduled to play a third oboe part after the interval in the Mahler Symphony stepped up to the plate. Given the nod, she slipped unobtrusively into Emma's seat and after a short tuning up, Brahms' St Anthoni Variations began again, this time with the crucial 1st oboe line intact. Everyone, including the orchestra members, breathed a mental sigh of relief. Following on from the Brahms (making, incidentally, a welcome programming change from the obligatory concert overture) was Mozart's charming Exultate Jubilate, performed with flawless virtuosity by soprano Alison Roddy. She was accompanied with sensitivity by the orchestra, one of the finest groups of amateur musicians in the Midlands.

It's not often Mahler comes to Cleobury, and this was an inspired choice. BPO gave a beautifully balanced account of

his fourth Symphony, the smallest and sunniest of Mahler's symphonic output. They responded tastefully to Lloyd's flexible tempi, and were joined by Alison Roddy for the final movement, in which the soprano voices a child's poetically naive view of heaven. The compositional style veers from simplistic to the sophisticated in the unique sound world of Mahler's scoring, where numerous players are given exquisite little solos, and in which the tutti passages are illuminated by a wide range of playing techniques. For instance the spectacular 'Schallbecher auf' in which members of the woodwinds lift their instruments up, bells pointing out into the audience (incidentally making it somewhat difficult to read the copy, I was informed over a libation in the KA afterwards). It was a great evening and one which supported the Friends of St Mary's, not only financially, but also showed off their considerable organisational skills to the benefit of the Cleobury community.

Linda Fowler

Soap products include.....

- White moisturising soap - Hand made with goats milk and coconut oil.
- Pink Floral soap - Hand made with a hint of Rose oil.
- Mauve relaxing Soap - Hand made with Lavender oil. £4.00 for a box

Cleobury

Cosmetics

Hand made at Lacon Childs

Ideal gifts for Birthdays and Mothers day!

Moisturiser products include

- Coconut moisturiser - Hand made with natural cocoa butter and Coconut oil.
- Rose moisturiser - Hand made with natural cocoa butter and a hint of Rose oil.
- Lavender moisturiser - Hand made with cocoa butter and a hint of Lavender oil. £2.00 a pot

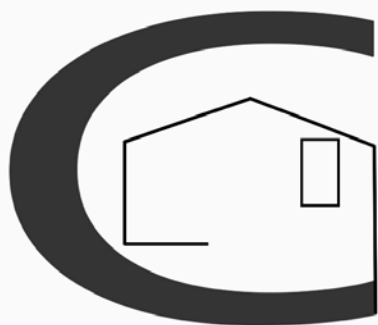
Lip Balm products include

- Natural lip balm - Hand made with Beeswax.
- Rose lip balm - Hand made with Beeswax and a hint of Rose oil. £1.20 a pot

Contact Johnston.C@lacon-childs.org.uk

To order your cosmetics.

Order a box of your chosen soap, moisturiser and lip balm for £4.50



Chris Stokes
**Roofing &
Building**

www.proroofer.co.uk
tel: 01584 890069
mob: 07853 461290



Now at Cleobury Medical Centre

- Free hearing health checks
- The latest hearing aids
- Repairs and servicing
- Tinnitus Advice
- Independent advice and aftercare service

Tel: 0800 731 8545

Email: clearhear@btinternet.com

Web: www.clearhear.co.uk

Alexander & House

Alexander House is a national, award-winning, Chartered firm of Independent Financial Advisers and Wealth Managers who can provide advice to individuals and businesses.

**Contact Nigel Porter
locally on 01584 892098
or 07974 085141**

Financial Advice on Your Doorstep

**Investment
Planning**

**Retirement
Options**

**Reducing
ongoing
charges / costs**

**Auto-enrolment
- understanding
your obligations**

Reducing Tax

Divorce

**Protecting you, your
family and your estate**

**Office: 0800 316 1811 / info@alexanderhousefs.co.uk
www.alexanderhousefs.co.uk**

Alexander House Financial Services Ltd is an
appointed representative of CAERUS Financial Limited



COACH TRIP

Mrs Gregory up on Clee Hill is running a coach trip to Bristol on the 22nd of this month. All proceeds from these trips go to charity.

Details from Mrs Gregory on 01584 891464.

NEEN SAVAGE W.I.

Our March speaker was John Sant, who lives in Cleobury Mortimer and runs his own company recycling white goods. He gave a very interesting talk and made us look at recycling white goods in a whole new way.

Our next meeting will be on April 12th at 7.30 in Neen Savage village hall with a visit from Mrs A MacKirdy who will be talking about life on a smallholding - should be really interesting for anyone for wants to opt for the good life.

Julie Hobin

EARLY MORNING BIRD SONG

There's a chance for early risers to see and listen to birds singing in the Novers Limeworks Wood, Clee Hill, on May 13th. It's a joint venture by the Clee Hill Community Wildlife Group and Titterstone Clee Heritage Trust, and they will be gathering at The Novers car park for a 7.30 start. That's located off the B4214 south of Clee Hill Village or at

Ordnance Survey map reference SO597738 if you prefer.

There is a lot of activity up on the hill, reflecting interest in the bird life there. They are involved in a Curlew, Lapwing and other birds survey to assess the birds' security in the area. See www.ShropsCWGs.org.uk for more information about this enthusiastic group's work.

BAYTON CHURCH UPDATE

Major works have been taking place at Bayton Church since last June. The church now has a new roof that looks very smart and will keep the weather out for years to come. There have also been major problems with the floor; the old flagstones had eroded over the years and this plus considerable water damage has necessitated a new floor. A major task that involved digging down to the bedrock and building a complete new floor to alleviate water and damp. Work is going well and the whole project will hopefully be completed by May.

Over the months the church has been closed, the regular services have been transferred to either Mamble or Clows Top churches and functions have been held around Bayton, Mamble and Clows Top.

Brian Link

FREE TO A GOOD HOME

That's the sort of headline that normally goes with a picture of an appealing cat or dog, but this offer is very different.....



It's a Concept Freedom Trail bike, 23 inch frame and looking in pretty good condition, fitted with a Currie Electro Drive unit to help up steep hills. In fact the drive unit's lead acid battery is dead and has become warped in its carrier, so it needs some work and money if you want the extra luxury that offers.

Currie has a website and can supply just about everything you're likely to need, so it's a proposition for a handy man or woman. Robert Westwood can tell you more - he's on rjw261@btopenworld.com.

SILLY BIT

Arguing with a woman is like reading the Software License Agreement..... In the end, you ignore everything and just click "I agree."



CLEOBURY CHIROPRACTIC

31 High St. DY14 8DQ

www.notjustaboutbackpain.com

A refreshingly gentle method of chiropractic suitable for all ages.

*** BACK PAIN * SCIATICA * POSTURAL PROBLEMS
* SCIATICA * SPORTS INJURIES * JOINT PAIN**

PLUS * CORPORATE COMPUTER (DSE) WORKSTATION ASSESSMENTS

*** BACK CLASS - Weekly exercise class for those with back/neck pain**

Sue Brown MA MSc DC MMCA

07932 00 00 28



GCC registered
General Chiropractic Council
www.gcc-uk.org



L R DEVELOPMENTS



We are a local building company who specialise in a variety of jobs to suit your needs!

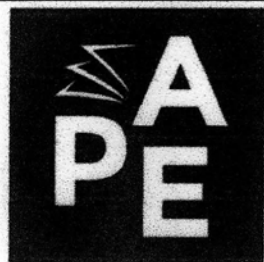
For more information contact:

Lee Rollings

Email: lee@lrdevelopments.co.uk

Telephone: 07506 791 577

Website: www.lrdevelopments.co.uk



Finance

Financial Accountants

We are local Accountants who provide a quality service at competitive prices

Not VAT registered so you save 20% on your fees immediately

We can help with the following :

Bookkeeping
Payroll/PAYE
Accounts Preparation
Business and Personal Tax
VAT
Business Start-ups/Financing
Company Formations/Secretarial
Business Advice

Area covered 15 miles of Cleobury

To include :
Cleobury Mortimer
Kidderminster
Tenbury Wells
Bewdley
Bridgenorth
Stourport-on-Severn
Ludlow

Speciality in pub/restaurants and building contractors including CIS sub-contractors

Member



BRITISH INSTITUTE OF INKKEEPING

For a free quote :

Tel : 01299 272647 or mobile 07779 011819

Email : paul@paefinance.co.uk

Website : www.paefinance.co.uk

Community Contacts for Clarion Readers

CEMETERY ADMINISTRATOR	Theresa Ray	07703 965 064	theresa.25016@hotmail.co.uk
CLEOBURY COUNTRY CENTRE		01299 272300	In Love Lane, 9 to 5 Mon to Fri.
CITIZENS ADVICE		08444 991100	Advisors on line 10.00 to 4.00
CLEOBURY CARERS	Wendy Duley	01299 270562	
CLEOBURY COMPASSIONATE COMMUNITIES	Katja Ward	01299 270018	10.00 to 12.00 Weds
CLEOBURY MORTIMER LIBRARY		01299 272301	Open 9 to 7 Mon, 9 to 5 Tues/Fri and 10 to 1 Sat.
LOCAL POLICE	Constable Anne O'Leary		ann.oleary@westmercia.pnn.police.uk
CLEOBURY MORTIMER GUIDES	Dorothy McBride	07761 976610	
CLEOBURY MORTIMER SCOUTS	Ingrid Purslow	01299 270314	
CRIMESTOPPERS		0800 555 111	Free Police contact. Talk in confidence, to report any crime.
DOMESTIC VIOLENCE HELPLINE		0800 783 1359	Women's Aid, 24 Hour support:
HOME FROM HOSPITAL		01584 878046	Help over the first weeks back home from Age UK
MARKET HALL	Dorothy McBride	07761 976610	dorothymcbride@cleobury.org.uk
MEDICAL CENTRE		01299 270209	Out of surgery hours, use the Shrop Doc Service.
SHROP DOC		08444 068888	Service available evenings and weekends
THE PHARMACY		01299 270219	Closes for half day on Saturday. Delivers prescriptions
NEWLIFE CHURCH	Pastor E Stirrup	01562 630595	Sunday services at 10.30
NIGHTINGALE NURSING FUND	Rosemary Abbiss	01746 718451	
PARISH COUNCIL	Clerk Matthew Sheehan	01299 271154	Market Hall 9 to 2 pm, Mon to Fri. www.cleobury.org.uk . Council meets in the Market Hall on the first Monday of the month
POST OFFICE		01299 270211	In the Spar Grocery Store, Church Street
SAINT MARY'S YOUTH PROJECT	Mark Greaves	07828 116810	mark.stmarys@live.co.uk
SHROPSHIRE COUNCIL		0345 678 9000	
SOUTH SHROPSHIRE YOUTH FORUM			richard@ssyf.net.
VOLUNTARY CAR SCHEME		01299 666119	for bookings
WASTE DISPOSAL		0345 678 9007	The contractor is Veolia
WATER SUPPLY EMERGENCIES	Severn Trent	0800 783 4444	

Collect the Clarion from: Spar Grocery, M & M Baldwin, Butler's Store, Cleobury Cafe, The Severn Hospice Shop, The Co-Op Store, Carrot Tops, Purslow's, The Library and Simply Fresh, Cleobury Mortimer. Heath Farm Meats, Bagginswood; Brian Link, Bayton; Post Office Cle Hill; Village Store, Cleobury North; Clows Top Stores; The Sun and Slipper, Mamble; Hopton Bank Service Station; Ludlow Library; Mawley Oak Garage; Coppice Lodge, Mawley, The Colliers Cafe & Shop, Rock; The Fighting Cocks, Stottesdon; The Duck Inn, Chorley; The Live and Let Live, Neen Sollars; The Eagle and Serpent, Kinlet; Parker Motors, Ditton Priors.

Missed your Clarion? Cleobury Mortimer Library keeps the current month's copy on file and all back issues are available to read in pdf form from www.cleoburyclarion.co.uk.

THE DEADLINE FOR THE MAY ISSUE IS APRIL 25th

Editor and Advertising Sales: Jim Reynolds, 4 Childe Road, Cleobury Mortimer, Shropshire DY14 8PA. Telephone: 01299 270642 Mobile: 07410 977 212

E: uncle.jim@icloud.com

The Clarion On The Web: www.cleoburyclarion.co.uk

The Clarion is published by Cleobury Clarion Media Ltd and printed by Glint Print (01299 266657)

*Nock
Deighton*

Integrity and Service since 1831

FOR
SALE



Cleobury Road
Far Forest

£625,000

A charming four bedroom cottage, completely rebuilt and restored by the current owners in 1993, tucked away within the most glorious landscaped gardens which equate to approximately two acres. EPC E

Cleobury Mortimer

36 High Street
Cleobury Mortimer
DY14 8DQ

Kidderminster

71 Coventry Street
Kidderminster
DY10 2BS

01299 271477

TO
LET



Lower Street
Cleobury Mortimer

£575 pcm

A well presented three bedroom property, which boasts both modern features and traditional character.

EPC G

Residential Sales

The latest figures for our House Price Index show a monthly increase in February of 1.3%, with a year-on-year rise of 4.8%. It looks like 2017 is playing out as we predicted, with a steady rise in house prices showing that the local property market is performing strongly. Reports from our estate agent offices across Shropshire, Worcestershire and Herefordshire are that sales volumes are up on this time last year. Confidence is high and as long as properties are sensibly priced there is no reason why they won't sell quickly, especially with a continued lack of new properties coming onto the market.



Erica Hinwood
MARLA MNAEA
Office Manager

A new minimum level of energy efficiency will be about to come into force this time next year, so it's worth acting now to make sure your property will comply. Every property for rent in England and Wales must have a minimum EPC rating of E from April 2018, otherwise the landlord could be open to enforcement action. The rules apply to domestic and non-domestic properties, and the Government has just issued official guidance for non-domestic property landlords. You can find a link to read the guidance in full by visiting our website www.nockdeighton.co.uk and heading to the Blog section.



Coral Walrond
MARLA MNAEA
Lettings Negotiator

PROPERTY AGENTS | VALUERS | SURVEYORS | AUCTIONEERS

www.nockdeighton.co.uk

CLEOBURY MORTIMER | KIDDERMINSTER | LUDLOW | BRIDGNORTH | IRONBRIDGE | NEWPORT | TELFORD | LEOMINSTER