

The Cleobury Clarion

CLEOBURY.

COMMUNITY HUB

The Community Hub, in what was the Methodist church, has been in use since 2018 as the Community Hub. Its growth as a centre of activities has been a sight to warm the heart, with volunteers of all ages helping with advice, decorating and modest construction skills and fund raising work. The place has the buzz of success.

In July news broke that the application for funding from the National Lottery to match what had already been raised towards actually buying the property had been agreed. We as a community now own the Hub and Phase Three of its development is next.

There's a saying by a sage that fits this occasion: "Life is not measured by the number of breaths we take, but by the moments that take our breath away."

A LOSS TO THE TOWN

This community has lost two men of great value in the space of two days. The town had just celebrated the wonderfully happy wedding of Peter and Sarah Blackburn, when the Parish Church was almost overflowing and the radiant couple left to travel north and some blessed peace. All seemed well.

Then came the sad news that Chris Hargreaves, a quiet spoken but really strong presence in the Footpath Association, a man with a ready smile and readiness to help others, had died on the 15th.

Mazella Witts-Hewinson of the Footpath Association wrote to advise members of the loss of a highly valued member: "Chris was an active member of CMFA having taken a leading role on maintenance work parties, assisting with the website, and

chatting and backmarking on Walking for Health group walks. Chris will be missed by many members." The sympathies of all who knew the man go to Veronica and their children.

The next day came another shock with the news of Chris Kippin's passing. This quietly spoken man so active in his work for the church and making time to cycle or walk for great distances as he explored the country and wrote about his travels in a perceptive fashion.

He was both treasurer of the Community Hub committee and a leading figure in the restoration of the town's historic clock and the establishment of that great timepiece and the bell ringing chamber in a fashion that suited its surroundings and gave our bellringers a decent space in which to put out the chimes that fill every day.

Two good men gone to meet their maker after lives lived actively in helping others. The world is a poorer place with their passing.

John Brazier & Co

Accountants & Business Advisors

Accounts – Company, Partnership and Sole Trader
Tax Returns – Corporation Tax and Personal
VAT - Returns and advice
Payroll Service including RTI

For a personal and
professional service

Contact John Brazier or Sarah Morgan to discuss your requirements on 01299 271473 or email at info@johnbrazierco.co.uk. Alternatively, you can arrange a meeting at 53, High Street, Cleobury Mortimer, Worcestershire DY14 8DQ

01299 271 473



Victoria Allen Funeral Services

An Independent Family Business offering a
Personal and Professional Service

Over 25 years' Experience

Competitively Priced

Private Chapel of Rest

Golden Charter Pre-Paid Funeral Plans

Covering All Areas

Home Visits Available

01584 879035

24 Hour Service

8 Charlton Rise, Ludlow, Shropshire, SY8 1ND
www.vallenfuneralsludlow.co.uk
Email: vafs@btinternet.com





*Kathie's Eulogy
See Page 15*



*Stuart Anderson
Our new MP. See Page 23*



*In Business - Stuart at
Revive Bathrooms. Page 47*

And On Other Pages....

- | | |
|----------------------------------|------------------------------|
| 5 - The Beacon on the Hill | 29 - Caring for God's Acre |
| 7 - Regal Theatre Chair Wanted | 32/33 - Doddington Lodge |
| 9 - Big Butterfly Count | 35 - Simon in the Garden |
| 11 - Rock Pathfinders | 41 - Mrs Grumpy |
| 13 - 80th D-Day Events | 47 - Wood Words |
| 17 - CMFA Social Walk | 52 - Community Contacts |
| 21 - August in the Wyre Forest | 55 - The Social Calendar |
| 23 - Stuart Anderson, our new MP | 56 - Let's Beat the Scammers |
| 25 - Saint Mary's Benefice | 58 - The Town Council |
| 27 - Cleobury Patients' Voice | 59 - The Community Hub |

Firewood

Seasoned logs, barn dried & ready to burn.

Free local delivery -01584 890993 or 07970878224

Various size loads available



Paul Harding Tree Services





follow us on facebook

DRY CLEANING & LAUNDRY SERVICES
20 HIGH ST, CLEOBURY MORTIMER DY14 8DG
01299 270571 / 07483 380019
HOUSEHOLD & COMMERCIAL WORK WELCOME
FULLY ATTENDED MONDAY TO SATURDAY 9AM-5PM

THE PLACE TO AIR YOUR DIRTY LAUNDRY!!

self service & full service wash/dry/fold/iron large machine for big items
dedicated machine for pet items equestrian rug cleaning team sport kit laundry service
professional shirt service dry cleaning service duvet/ blanket/sleeping bag washing service
Nikwax wash and proof for outdoor clothing
local delivery available, we specialise in hotel and B&B laundry and ironing

CELEBRATING 10 YEARS IN BUSINESS
THANK YOU TO OUR LOYAL CUSTOMERS AND THE COMMUNITY FOR THEIR SUPPORT



Michael Coombes Roofing & Building Maintenance.

Complete Re-roofing, Roof repairs, Pointing & Chimney repairs.
Slabbing & Brick work
Wall & Floor Tiling
Painting & Decorating

Over 20 Years experience in the Cleobury area.

Call Michael on 07854 047413



Supplying kiln dried logs in 3 convenient load sizes: a bag, a pickup load or a transit/trailer load. We also stock nets of kindling.

We are Ready to Burn accredited and offer free delivery within 10 miles.
Logs are between 8-10 inches in length and are kiln dried to 20% or less moisture content.

**** Summer promotion – discount on prices for orders placed between 1st June 2023 and 31st August 2023 ****

For prices, availability or to place an order, please contact us on

01584 891307 or 07518 810269

B Price Forestry, The Workshop, Bitterley, Ludlow, Shropshire, SY8 3HW



Tele:-
01299-272757

All digital media printed to 6"x4" 5"x7" 8x6" 10"x8"
CANVAS WRAPS FROM 12"x16" - 30"x 20"
ENLARGEMENTS FROM 12X10" TO 24X36"
FROM PHOTO'S, DIGITAL MEDIA & 35mm SLIDES

PASSPORT PHOTO'S ONLY £5-00
WHILE YOU WAIT

MOST VIDEO FORMATS TRANSFERRED TO D.V.D.
USB or SD cards

INCLUDING VHS - VHSC - SONY 8 - DIGITAL 8 - Hi8 - MINI DV & BETAMAX
REEL TO REEL & CASSETTE
AUDIO TAPES & OLD LPs TO CD

Hands on Printing

PHOTO & VIDEO FILES TRANSFERRED FROM MOBILES TO DVD ETC.

STANDARD 8 - SUPER 8 FILMS TRANSFERRED TO D.V.D.
USB or SD cards
DAMAGED PHOTOGRAPHS RESTORED ETC.

BIRTHDAY AND CELEBRATION BANNERS

Look Who's 50 Today!

VINYL BANNERS - BUSINESS CARDS - SHORT RUN FLYERS
INVITATIONS - ORDERS OF SERVICE

B-W OR COLOUR PHOTOCOPIES
SELECTION OF PHOTO FRAMES
Traditional Studio Portraits and Pet Photo's

Video Filming Service

43, High St.
Cleobury Mortimer.
DY14 8DQ

Email:-
clickclick2@hotmail.co.uk
Mobile 07708 587787

'BEACON ON THE HILL' UPDATE

What is your Clee Hills story? The team working on the *Beacon on the Hill* project are offering the chance to share your local history. Drop in on August 3rd to their event at Clee Hill Village Hall 2-5pm where history old and new will be brought together. Here you can help identify local faces, places and events in the growing community archive as well adding to the memory map of the area. Bring along your old photos, documents and objects that tell your Clee Hills story and have them recorded. We will also be screening archive footage alongside some very new hi-tech 3D modelling of the old quarry workings.

Did you know there is a possibly more famous Titterstone Clee Hill? The 2020 worldwide hit video game *Assassin's Creed Valhalla* has missions set on Viking Age Titterstone Clee Hill where your character has to find a magic spring, build a cairn and discover treasure in Dhustone Quarry! This alternate reality hill is now famous with gamers all over the globe. Come and watch some clips and see if you recognise the real hill in this digital version!

For those interested in getting out into real history, Alf Jenkins MBE will be leading a walk through Titterstone Clee Hill's industrial past on the 1st August. The walk will cover nearly 5 miles, but alternative transport can be provided. Tickets from ticketsource.co.uk
Jim Grevatte

A RARE SIGHT

Seen up at Hopton Bank Service Station, where I always call for fuel. Not because I've any objections to the Co-p just down the road, but I've done enough weekend riding and driving through rural Wales to know how valuable fuel stations are, to both locals and passers-by.



Catching the eyes of a lot of passing drivers is this very tidy looking 1939 MG VA Saloon. We tend to think of MGs only as sporty little two seaters, but they did also make saloons at their Abingdon factory up to the 1950s. This is a 1465cc model, restored in recent years. Any old car fan would look and feel great in this, and when it rained, which it does do occasionally in this country, there would be no rush to get the roof up.

It's a new move by Harold, who is nobody's fool when it comes to selling cars. There are a lot of people who make the journey up the Hill to stop and take a closer look at this grand old lady. If it doesn't fit their budget, there's a lot of younger motors on offer.

SWING FROM PARIS

This looks like another evening of interesting music at Clows Top's Victory Hall on the 28th this month.

They're a quartet of violin, guitars and double bass, inspired by the great swing bands of the 1930s and 40s. A mixture of Benny Goodman and Charlie Christian meets Django Reinhardt, Stephane Grappelli and the Hot Club of France tells you it will be good.

The Jazz Mann rated them highly, with four stars and some telling words: "Interesting, intelligent and inventive." Tickets are £15.00 with no booking fee from [h t t p s : / / www.eventbrite.co.uk/e/886873471427](https://www.eventbrite.co.uk/e/886873471427)

See you there.

BARN DANCE IN THE PARISH HALL

On Friday 23 August, at 6.30 for 7.00, there will be a barn dance in the Parish Hall. Many of you enjoyed it last year and have asked for a return. Here is a another chance to let your hair down in an evening filled with fun and laughter – and not just at the dancing. Tickets £15, including two-course meal, from Gabby on 01299 271713, or email: gabbyfranklin76@gmail.com, or online at www.cleoburyparishhall.uk/barndance. Bar, tea and coffee. They are selling fast: don't miss out.



Find Your Smile at Cleobury Dental Practice

Whether you're looking for dental implants to replace missing teeth, invisible braces for a straighter smile, boosting your confidence with teeth whitening or a dedicated dentist for your regular care, you can find it all here in the heart of historic Cleobury Mortimer.

- Modern, state of the art facilities and the latest dental technology
- Free car parking adjacent to the practice and step-free access to our dentists' surgeries
- Enjoy private dental care from just 47p per day with our membership plans
- Highly experienced in helping those with dental phobias

Services Provided

- Tooth-Coloured (White) Fillings
- Sedation for Anxious Patients
- Teeth Straightening with Braces and Invisalign
- Dental Implants (Replacement of Missing Teeth)
- Emergency Appointments Slots Available (first come first served)
- Hygienist Services
- Private and NHS Care (NHS subject to capacity)

Opening Hours

Mon, Tue, Wed and Fri **9am-5pm**

Thu **9am-7pm**

Saturdays **by appointment only**

Tel: 01299 271 747

www.cleoburydental.co.uk

CHAIR WANTED

The Regal, Tenbury Wells, is searching for a new volunteer **Chair of Trustees** as the current Chair, Jane Allen, plans to retire from September.

THIS is an important leadership role at the Regal and the vacancy offers a local individual the chance to help secure a sustainable future for this much admired arts facility.

The Chair will be working alongside the members of the Board, as well as the Regal's team of staff and volunteers. The Board wants someone with the experience and flair to play a significant role in taking the theatre forward into the next chapter of the Regal's long history. The Trust works closely with members of Tenbury Town Council who own the building, and with other local community leaders.

Details: Applications now open for this voluntary role.

Closing date: 15th August, 2024

Interviews: Early September

Information link: <https://www.regaltenbury.co.uk/vacancies>

About the Regal

The Regal is a community-focused multi-arts venue. We are a registered charity run by a small team of professionals supported by 80+ volunteers. The beautiful Art Deco building started life as a cinema in 1937. Today it presents a varied programme of live comedy, music, and live theatre alongside regular movie and arts screenings, and an annual professional pantomime.

About the Board

The Board of Trustees are all volunteers. They are responsible for delivering the overall vision and mission of the theatre and ensuring high standards of governance of the charitable trust. For further information, please visit

www.regaltenbury.co.uk

Contact:

Jane Harris or Erika Wooding

janeharris@regaltenbury.co.uk

erika@regaltenbury.co.uk

CLEOBURY GARDENERS

In July Howard Drury DHE (Hons) offered us the depth and extent of his knowledge and experience of gardening and getting the best out of clay soil. Howard is a broadcaster, lecturer and writer and having learned his craft the hard way, making others rich on his labour, was persuaded to authenticate his skills, and joined Edinburgh Botanics, graduating with Honours. Some may remember seeing him on the 611 programmes he made for "Question Time" from Pebble Mill. His first screen was "Principles of Planting on Clay Soils", thus: plant late, ground slow to warm up. Use a permeable membrane to cover and warm the ground, "Myplex" recommended; raised beds are a well controllable option, particularly for the smaller garden; plant high with a domed finished level, enabling roots to develop out of wet soil; choose suitable plants for this type of soil; always make planting decisions suitable for present weather conditions – wet and cold

Spring and cold summer, such as this year; expect to crop early.

Clay is the most fertile soil, but has to be managed. They soils retain nutrients well, so are not 'hungry' and adding fertiliser might be a waste of money at best or actually damage the soil. Calcium is retained and there is no need for lime. Clay holds water and is less prone to drought. Conversely clay holds too much water in wet weather and can become waterlogged causing problems for root growth if the soil is compacted. However, when the water has dried out, the soil actually sinks and deep cracks form which can damage foundations and roots. Poor air penetration and strong water retention means that clay soils are slow to warm up in Spring, delaying seed germination. You should also take account of climate change and plan your planting regime accordingly. I have given you the main points here, but strongly recommend that you contact the website www.thedrurys.com (or 0121 443 3212) for more detailed guidance. Howard has made available Fact Sheets giving full guidance on numerous topics, including Getting the Best Out of Clay Soils.

Cleobury Gardeners contacts: ashmanlinda240@gmail.com, facebook, Instagram, Cleobury Country Local Societies website.

Linda Ashman



RED  HARE

45 HIGH STREET
CLEOBURY MORTIMER
WWW.REDHARESALON.CO.UK

01299 270702

YOUR
HAIR
IS
OUR
BEST
ADVERT

PPD FREE - PARABEN FREE - SULPHATE FREE - CRUELTY FREE

"Red Hare now offers a private hairdressing room. Perfect for those wanting more privacy, peace and quiet"



Sue Brown
MA MSc DC MMCA
CHIROPRACTOR

Hands for Heroes
Free Chiropractic Care for War Veterans



GCC registered
General Chiropractic Council
www.gcc-uk.org

CLEOBURY CHIROPRACTIC

31 High St. Cleobury Mortimer DY14 8DQ

JS James Smith
OSTEOPATHS

We offer both **CHIROPRACTIC** and **OSTEOPATHY**,
using gentle methods suitable for all ages.
Appointments available outside of normal working hours.
Both practitioners are fully registered, insured & regulated.

- * BACK PAIN * SCIATICA * POSTURAL PROBLEMS
- * JOINT PAIN * HEADACHES (arising from the neck)
- * Some SPORTS INJURIES

PLUS * COMPUTER (DSE) WORKSTATION ASSESSMENTS
* BACK CLASS – Weekly exercise class for those with back/neck pain.



01299 519351 / 07932 000028 / 07506 287191

www.notjustaboutbackpain.com

www.jsosteopaths.co.uk

iO
THE INSTITUTE
of OSTEOPATHY



THE NEARLY DEAD POETS' SOCIETY

An unusual meeting in June, when the editor forgot to collect the keys to the library and six poets, including a very welcome Bob Charteriss in from Kidderminster, found themselves on the benches outside The Talbot. Beer and wine was served and we read in competition with the noise of passing traffic. A test of talent, or is that just an excuse for forgetfulness?

The subject was "Meadows" and Janet and Tina read warm words of days past; David read 'Buttercups' from his "Poems of Nature" book and the editor read about Meadows Engineering of Wolverhampton, a company that died in 1968 but the gentle meadows still survive.

The subject for our July work is "Heroes", an appropriate choice to follow the D-Day 80th anniversary. We will meet, subject to keys, in the library on Monday July 29th.

Jim Reynolds

CLOWS TOP GARDENING CLUB

This month on Wednesday the 28th we are visiting Rhydd Gardens, which are situated to the south of Worcester near

Hanley Castle. They were originally the kitchen garden for Rhydd Court. There are two walled gardens and a 60 foot greenhouse.

Also available are a nature walk and woodland; all with views of the whole of the Malvern Hills ridge. The garden is a 40 minute drive from Clows Top, as usual we will meet at Victory Hall at 6.00 to share cars.

To book, please contact Elva on 01299 832288.

Judith Lawson

BIG BUTTERFLY COUNT

The Clee Hill Community Wildlife Group's Butterfly and Moths Group have a Big Butterfly Count at Wheathill Wildlife Site, Brickyard Farm, along the B4364 on Saturday 3rd August starting at 1.00pm. This is a free event. Email suzannetumnus@btinternet.com to book your place and for more information.

This sounds like another fine country style opportunity, with so much to see and enjoy, rather like the Wild Flower Meadow Walk we reported last month. The editor sends his apologies, but he'll be at Silverstone on a Big Boys Outing.

GETTING ON THE BUS

Chatting to a lady recently, she mentioned what a struggle it could be getting on the bus when you're mature and not so agile as you were when young. She was explaining how high the step up can be and how she'd seen a lady in her 90s trying to get her shopping trolley on board. One assumes the driver would help her, unless he was not allowed to leave his seat.

I consulted our well known specialist on this subject, Steve Todd, and he tells me that modern buses can offer a lower entrance step, but not older ones. The matter of the driver helping a passenger struggling with baggage he believes is down to the individual driver. No solution to the problem there, but maybe a complaint to our Town Council would be passed on to the bus company? We English are not good at the matter of complaining, but we should not give up without trying.

WISE BIT

"Music begins where the possibilities of language end."

Jean Sibelius



UPHOLSTERY & INTERIORS

Rosemary Jones

Mob: 07837 609229

Phone: 01584 861823

Email: info@charltoninteriors.com

www.charltoninteriors.com

MOBILE FOOT HEALTH CARE

A thorough nail and foot care treatment in the comfort of your own home. Registered and Insured practitioner.

Karen F H Di, RFH

07378 122788

Do you have a Will? Never managed to get it written?

Writing your Will and planning for later life can feel like a daunting process...

It doesn't have to be!

I guide you through the process of writing your Will and Lasting Powers of Attorney

Call me now to find out how I can help

07966366505



I'm Stephanie

The Will Writing Group



07966366505 | Info@thewillwritinggroup.co.uk | www.thewillwritinggroup.co.uk



Electrical installations from domestic to commercial and industrial no job to big or small.

Over 16 years experience.
Local family run business.

Contact: Phone 07872498829
Email lee.leapelectrical@gmail.com



Friendly, honest tree surgeon serving
Bewdley and surrounding areas.

**Contact Isaac
for a free quote!**

Mob: **07845 615 806**
Tel: **01299 513 448**

All Aspects of Tree Work
Stump Grinding

Hedge Trimming/Reducing
Grounds Maintenance

Logs &
Woodchips

Qualified

Insured

Tidy

Email: elphicktreeandgarden@gmail.com Web: www.elphicktree.co.uk

JUMBLE SALE

There's a Jumble Sale in aid of the Midlands Air Ambulance Service, from 10.00 to 12.30 at Saint Elizabeth's Church Hall in Lower Street on Saturday the 17th of this month. Entry is free.

Lots of bargains on offer, plus bric-a-brac and books. And of course there will be refreshments available. There will be extra parking available, down the lane in Pinkham.

BREAKFAST CLUB

In July, 18 members met to hear Eddie Humphries continue the story of his involvement with radio and space exploration. Hi-tech stuff, you might say, but the night before, when tweaking the notes for his talk, Eddie suffered a computer disaster. He lost control of his computer, and it seemed that an alien hand was guiding the mouse. Who would have thought that Cleobury would be a target of Russian hackers?

Undeterred, Eddie spurned the rebellious mouse, and gave us an insight into a different aspect of his life – The Tuba. By chance, while at

school Eddie was persuaded to take up the tuba – and has stuck with it ever since. His parents nobly encouraged this new (and noisy) pursuit, and scraped together the hundreds of pounds necessary to buy their young son his own tuba. For this he is truly grateful, as Eddie and that very tuba have since played in numerous groups, bands and orchestras. Amongst his greatest achievements were a season working for ITV, and a spell with the City of Birmingham Symphony Orchestra. He keeps on blowing – and many in Cleobury will have enjoyed his performances with, for example, an Oompah Band – and to prove it, he finished his entertaining talk by reaching for his instrument and giving us a blast of 'Tuba Smarties'. A first for the Club!

The Club's next meeting will be on 13 August at the Golf Club (but without a speaker), and on 10 September, Francis Engleheart will be talking about Kinlet. Anyone wishing to attend either meeting should contact Angela Drennan (270636).

CONGRATULATIONS

All at Saint Mary's church would like to offer their congratulations and best wishes to Cleobury Mortimer Hub, following their achievement of charity status as an independent organisation and also recently gaining a significant grant towards their development project to put their plans in order.

We enjoyed working with them while they were part of Saint Mary's and now look forward to watching them flourish independently as they continue to work to serve all those living in and around our town.

Cleobury Mortimer Parish Church Council

WISE BIT

"Music expresses that which cannot be said and on which it is impossible to be silent."

Victor Hugo



Home Support Services

All staff enhanced DBS checked with over 20yrs experience and training within the local authority/social services mainstream and dementia care sector. Fully insured.

Are you in need of support with the following basic day to day tasks?

Assistance during the day or night

Companionship

Shopping/Household tasks

Completing Forms

Pet Care

Attending social events/ appointments

Contact Liz

Tel: 01299 271623

Mob: 07826 929222

liz@livelifeathome.co.uk

Other support services available on request.

www.livelifeathome.co.uk

Contact Tracey

Tel: 01299 211660

Mob: 07957 659909

tracey@livelifeathome.co.uk



Traditionally handcrafted bespoke oak frame buildings



Here at Hopton Oak we
design, build and install:

- Stables
- Porches
- Garages
- Extensions
- Garden rooms
- Conservatories
- Gazebos and Pergolas



Contact us to discuss your oak frame project or any questions, the team will be happy to help.

hoptonoak@outlook.com | 07951041977 | hoptonoak.co.uk  Hopton Oak



WINDSOR PRICE REPAIR SHOP
Automotive

Email: mikeytwoonames@icloud.com

Tel: 01299 213558

Mobile: 07513 821616

Unit 1, Hillocks Farm,
Clebury Mortimer, DY14 0EB.



IRENA'S FOOT CLINIC

OVER 30 YEARS EXPERIENCE AS A QUALIFIED FOOT HEALTH CARE PRACTITIONER
PROFESSIONAL TREATMENT IN THE COMFORT OF YOUR OWN HOME OR MY SURGERY

- Nail trimming
- Ingrowing toenail treatment
- Fungal infection treatment
- Nail reconstruction
- Callus reduction
- Corn removal
- Athletes Foot treatment
- Verruca and wart treatment

CONTACT IRENA ON 01299 270212 and 07789070629
1 FURLONGS ROAD, CLEOBURY MORTIMER DY14 8AR





Cleobury Mortimer Branch

80th Anniversary of D-Day



It was wonderful to see many from the Cleobury Mortimer community venture out on an unusually chilly evening to be a part of the commemoration of D-Day with the lighting of the town's beacon on the Sports field.

The Branch President, Mr Ron Breakwell, did the honours of lighting the beacon at 9.15pm on 6th June 2024. Our thanks particularly to Revd Preb Ashley Buck for officiating at the ceremony, but also to Mr Craig Kershaw and Mrs Rosemary Thompson for photographing the occasion.

Are you thinking of joining the Royal British Legion?

Q: Can I be a member of the Royal British Legion without having served in the Armed Forces?

A: Absolutely, YES, and it costs just £18.00 per year.

Q: How do I join the Royal British Legion?

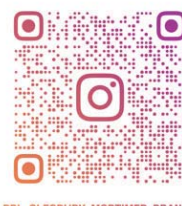
A: You can complete a membership application:

- Online:
<https://selfservice.britishlegion.org.uk/addmember/details>
- By calling: 0800 3077 773
(lines are open Mon-Sun, 8.00am-8.00pm, excluding Christmas Day and Boxing Day)
- By emailing: membershipservices@britishlegion.org.uk
- By contacting the Cleobury Mortimer Branch Chairman, Paul Serrell-Cooke on **07791 378240**

If you would like to find out more about it, scan the QR codes below to visit the RBL website and/or the Cleobury Mortimer Branch Instagram page:

RBL Website

Cleobury Mortimer Branch



RBL_CLEOBURY_MORTIMER_BRANCH

Alternatively, why not come and meet the Club members at one of our Branch meetings which are held on the second Tuesday of every month at 7.00pm in the Sports & Social Club



BACK BY POPULAR REQUEST

23 AUGUST - 6.30 FOR 7.00PM
 Tickets £15. 01299 271713 or online
www.cleoburyparishhall.uk/barndance

BARN DANCE



Cleobury Mortimer Parish Hall is the largest in the area

Would you like to celebrate an event, party, wedding, or just a get together?
 We are able to cater for small or large parties, sit down dinner parties for up to 100 people with or without a bar.

Come and have a look at what we can offer. To book, call Robert on 01299 270047

www.cleoburyparishhall.uk

[cleoburymortimerparishhall](https://www.facebook.com/cleoburymortimerparishhall)



17 August 7.30pm - Scrapper

This vibrant and inventive father-daughter comedy follows Georgie, a resourceful 12-year-old girl who secretly lives alone in her flat in a working class suburb of London following the death of her mother. She makes money stealing bikes with her best friend Ali and keeps the social workers off her back by pretending to live with an uncle. Out of nowhere, her estranged father Jason arrives and forces her to confront reality. Uninterested in this sudden new parental figure, Georgie is stubbornly resistant to his efforts. As they adjust to their new circumstances, Georgie and Jason find that they both still have a lot of growing up to do.

Tickets £5 - Bar, tea, coffee, cake



Care At Home

TLC Care at Home are a well-established family run, Home Care Provider who have built up an excellent reputation within our local communities

We have recently been rated as **OUTSTANDING** by CQC and this puts TLC Care at Home in the top 3% of providers in England



Professional care and support in your own home

Our dedicated Care Team are here to help support you with 24/7 care provision should it be required. At TLC Care At Home, we are dedicated to supporting people with wide range of needs, including Dementia, Acquired Brain Injury, Physical Disabilities, Learning Disabilities, Sensory Impairments and supporting our aging population.

Depending on your individual needs, we can offer varying degrees of support from young adults to very mature people. TLC Care at Home are here to help anyone who requires care and support to enable them to remain living at home for as long as it is safe to do so.

Comprehensive range of care services

- Domiciliary Care
- Palliative care
- Personal care
- 24 hour care
- Companionship
- Dementia Care
- Overnight Care
- Elderly Care
- Care for young adults
- Supporting younger people
- Domestic services: cleaning, cooking, washing and shopping
- Collections of pensions or prescriptions
- Trips out and about

Please contact us now for more information 01299 272 897
 Email: wecare@tlccareathome.co.uk
 Website: www.tlccareathome.com



KATHIE'S EULOGY



Kathie, Bev and friends at Clarks in Kidderminster.

Most people would associate a 'Eulogy' with a funeral. However by definition, it means 'a piece of writing that praises someone, or something highly'. A perfect explanation about my article below.

In 2012, I bought my Suzuki Grand Vitara from Clarks of Kidderminster. Twelve years on, I wanted to find a 'tiny' car, so my husband Mark and I returned to that same showroom. We were greeted by James, a friendly guy, who showed us a Jimny on the forecourt. He gave us a printout, outlining the car details and that was all we wanted on that day.

The next week we made an appointment to look at the car and get a trade in value for mine.

Every member of staff we met was so friendly. A guy called Kevin invited us to get into the Jimny, no pressure at all. Then another colleague served us coffee. I later learned that he was actually the manager, Ashley. All working together in perfect synch, no matter what their title, to take care of their customers.

James greeted us like old friends. He was lovely, friendly and caring. This was so special to me, because part of my disability, is that I have 'Expressive Dysphasia'. This means that my speech is a jumbled mess. But James took the time to listen to me and I actually forgot about that part of my disability. James learned about my beloved fundraising and that my long term memory is intact, so I can still recall songs that I learned years ago. So, we had a good old sing song, then sealed the deal on that 'tiny' car, not with a handshake, but in my way - with a hug.

I always name my cars, based on their number plate. With a number plate ending in EUL,

my new car was obviously christened 'Chubby Eulogy'!

A week later we returned to collect it. I had more hugs from Ashley, James and Kevin. My Chubby 'Eulogy' was all ready for me, inside the showroom. We completed all the paperwork, then before we left, James and I sang one of my favourite songs together - 'Something Stupid' Hilarious! A week later, Clarks asked me and fellow fundraiser Bev to return to the showroom. Paul, Ashley and James presented us with a cheque for £100 for my beloved charity - priceless!

I highly recommend Clarks of Kidderminster. Their customer service is excellent and tailored to your individual needs. If you phone them and say Kathie Rowbotham recommended you and you buy a car, they will donate £100 to my beloved charity Newbridge Cat Rescue & Rehoming Centre!

So you see, a eulogy can be amazing, if you write something lovely about someone, while they're still alive!

Kathie

Lower St Garage

7 Lower St, Cleobury Mortimer. DY14 8AA

- M.O.Ts on cars, motor bikes & small commercial vehicles
- Tyres, Tyre fitting,
- Puncture repair and Tracking.
- Diagnostics, Air conditioning
- Welding.
- Service and Repairs to most vehicles.
- Delivery and Collection Service Available



Contact The Team at Lower St Garage on: 01299 270208



BEWDLEY SIXTH FORM
We fly with our own wings

we are
ambition



THE BEWDLEY SCHOOL FOUNDATION
Alia valens non nocet

OPEN EVENING

TUESDAY 1st OCTOBER 2024

5.30pm - 8.00pm

Bookings will be available in September via our website:
www.bewdley.worcs.sch.uk

SIXTH FORM ADMISSION:
OPEN TO ALL PROSPECTIVE
SIXTH FORM STUDENTS



Purrrfect Cattery

Comfortable and spacious pens for single or double occupancy
fully licenced by Shropshire Council

visit our website: www.purrrfectcattery.co.uk

Contact us on: 01299 270565 or mobile: 07968 111415

Or email: enquiries@purrrfectcattery.co.uk

THE FOOTPATH ASSOCIATION

CMFA would sincerely like to thank Veronica Hargreaves for writing our previous walking reports. They have been fun and interesting to read and we are so grateful for her hard work in producing them each month. We hope that Veronica's successor can meet her high standards. *Joy Wilkinson*

CMFA SOCIAL WALK

So, 6.30 a.m. saw nine of us start out on our social walk. I am not sure about my fellow walkers, but I had mixed feelings at the beginning. Should I be here?

The prior evening, we had held a small family social event, celebrating my granddaughter's prom evening (I must proudly state here that my granddaughter and her handsome partner became prom king and queen). The prosecco and wine had flowed – so....

However, we started off downhill – always a good thing, and with bleary eyes and a bemused, tired dog, off we started.

What a beautiful morning!! We walked through Mawley, passed the beautifully restored/rebuilt summer house, downhill to the footbridge over the stream to head to Bayton. On the way, we espied a deer drinking from the lake and guinea fowl dashing across the field. We heard the peacocks in the distance and one of our walkers had a birdsong app and was able to decipher individual birds as they sang out their morning chorus.

Our route took us to Bayton church where we had a quick

stop. It is worth a trip to see how beautiful the church is and how well maintained.

We then headed downhill over the field back towards Cleobury, emerging on to the Bayton Lane by an old railway bridge.

Then an uphill trudge, however the beautiful weather and stunning scenery (no pain, no gain) made it so worthwhile. The group passed through the grounds of Reaside Manor (I was informed here 'Rea' is pronounced 'Ree' whereas the River Rea in Birmingham is pronounced 'Ray.'

It is amazing how much we learn when out on a walk with a group. Our final stage of the walk took us downhill overlooking Hobsons and a short uphill again before we saw Cleobury and walked our final steps of the morning.

Most of the group then went for a hearty breakfast at the KA.

It was a fantastic walk with a good vibe, and I am so glad I made the effort. My alcohol intake of the night before was forgotten and I was able to spend the remainder of the day, feeling reenergised.

Our monthly Sunday Country Walk took place on July 7th and nine of us avoided the Cleobury Run by doing the 'Dinmore Dally, Walk 21' in reverse.

It was a pleasant day and we agreed the walk was very pleasant in this direction as the views were excellent. We were able to see Clee Hill in one direction and Brown Clee loomed in the other. Some of our new walkers seemed pleased to discover they could walk to the golf course, where they would be able to purchase food and drink without being

members. The Golf Club is open to all and there are excellent walks from there. They serve lovely food and drinks most days.

The walk was made even more pleasant as we discovered two difficult stiles had been replaced with gates by Shropshire Council, making the walk much easier for those with mobility difficulties and more accessible for those with dogs.

Our next country walk is Sunday August 4th, starting from the church in Cleobury at 10.00 am. There is no charge for these walks.

Our Country walks take place the first Sunday of every month. Please see the leaflets displayed around the town or have a look at our website for further information. *Joy Wilkinson*

ROCK PATHFINDERS

The Pathfinders break away from their usual pattern to offer an evening walk to welcome this month, as detailed below. A good example to us all in their varied walks twice a month and details sent out to local newsletters in good time.

This month's selection:

Thursday 1st. 5.00 o'clock start for an Evening Walk starting from The Manor House of Whittington at Kinver. DY7 6NY.

Thursday 15th. 10.00 o'clock start from Tardebigge Church car park, Church Lane, Tardebigge, Bromsgrove, B60 3AH.

More details on www.rockpathfinders.uk or call Alan on 01299 400304.

Sue Humphries

BOILER INSTALLATIONS

GAS, LPG & OIL BOILER SPECIALISTS

UPGRADE YOUR OLD BOILER TO AN A-RATED BOILER & SAVE UP TO £580 A YEAR ON YOUR ENERGY BILLS

"Excellent service! They turned up when they said they would, and did what they said they would, going the extra mile when necessary. I highly recommend this company!"

WORCESTER
Bosch Group
Accredited Installer



SHELTER-ADAMS LTD
0800 6124 109 | 07990 523 790
enquiries@shelter-adams.co.uk



0% Finance & Interest
Bearing options available
on boiler installations!
11.9% Representative APR

Locally based family run business in the Heart of Worcestershire

HOPTON BANK SERVICE STATION

- Car servicing & Diagnostics
- MOT testing
- Clutches/brakes/tyres/batteries
- Car sales
- 24 hour petrol station

Contact Number: 01584 890225



Number Nineteen
No.19
Dental Laboratory

Denture Repairs

SPEEDY, QUALITY DENTURE REPAIRS

Cracked/broken dentures repaired the same day.

A 1 HOUR service is available for when time is of the essence, just call to make an appointment.

19 Lower Street, Cleobury Mortimer, DY14 8AL

Email: nevilleweaver@googlemail.com

Phone: 07973856733

All work undertaken by a GDC registered technician



A.B. Plastering
Plus Traditional Lime Plastering

Adrian Booton
PLASTERER

4 Severne Green, Bayton
Nr Kidderminster, DY14 9LL

Tel: 01299 832 838
Mobile: 07974 582 524



Rob and Annie look forward to welcoming you to
The Fighting Cocks Inn, Stottesdon.

Why not pop along for a drink and some delicious food. We have regular live music, so please keep an eye on our Facebook page.

Our opening hours are:

Wednesday – Friday from 5pm – 11pm
(food served from 6pm – 8.30pm)

Saturday from 12 noon – 11pm
(food served from 1pm – 7.30pm)

Sunday from 12 noon – 10pm
(lunch from 12 noon – 3pm)

The Fighting Cocks Inn, 1 High Street,
Stottesdon, Kidderminster DY14 8TZ.

Telephone 01746 718270

A WARM WELCOME AWAITS YOU.



What can a Nutritionist help with?

- Digestive issues
- Chronic Fatigue
- Sleeping issues
- Painful periods
- Menopause
- Migraine
- Type 2 Diabetes
- High Cholesterol
- Skin Conditions
- Children's Health
- Anxiety/Depression
- Vegan/vegetarian diets
- Weight Management
- plus many more

Visit www.eatyourselfbetter.co.uk to find out more or book a free mini consultation to see what I can do to help you. 07790521636

TIME TO CLEAN YOUR OVEN? LET US DO THE JOB YOU HATE

AS SEEN
ON TV

- Ovens
- Grills
- Extractors
- Filters
- BBQs
- Microwaves
- Hobs
- Ranges
- AGAs

Call or go online today for your free estimate

OVENCLEAN.
The original oven cleaning specialists

07913 123543
ovenclean.com



FOR ALL YOUR ACCOUNTANCY REQUIREMENTS

www.fairway-accountants.co.uk

Head Office: 01299 822283
team@fairway-net.co.uk

Simon Hector: 07896 439594
sjh@fairway-net.co.uk



Richard Haines

The Worcestershire Chimney Sweep

- ♦ Traditional & Power Sweeping Services
- ♦ Certified Chimney Sweep
- ♦ Insurance Recognised certificate issued



M: 07752 116629 T: 01584 781358 E: lostcity5@hotmail.co.uk

www.theworcestershirechimneysweep.co.uk





A female Emperor Dragonfly.

In April this year Kent Wildlife Trust announced the results of their 2023 insect survey, based on the numbers of dead insects found on car registration plates by volunteers after 26,500 journeys nationwide. I don't think you'll be surprised to know that there had been a decline in numbers (especially if you're the one who cleans the car!) but the scale of it is shocking – an 89% fall in the last 20 years. We simply can't manage without insects. Sir David Attenborough has said, "If we and the rest of the back-boned animals were to disappear overnight, the rest of the world would get on pretty well. But if the invertebrates were to disappear, the world's ecosystems would collapse." If I've noticed the decline, living as I do in the middle of a National Nature Reserve, then we're in trouble. I was cheered by the sight of a Marbled White butterfly recently after noting the complete absence of any but the Meadow Brown this summer.

Haphazard weather can be disastrous for invertebrates, but there's no doubt that the way

land is managed is a serious threat too. Nature-friendly practices account for a very small proportion of the landscape, with intensive farming practices such as habitat removal, indiscriminate pesticide use and monoculture of crops turning most of our country into a wildlife desert. How heartening it is then to hear about the success stories brought about by Worcestershire County Council's partnership with Worcestershire Wildlife Trust to run Natural Networks, which works with landowners and provides match funding for work on their land that helps nature. From 2018 to 2023 conservation advice has been offered covering more than 2630 hectares of land right across Worcestershire, and as a result projects are under way in 130 hectares. Examples of the work include 27,700+ trees and shrubs and 4,400+ metres of hedges planted, and 50+ ponds and wetlands created.

An independent evaluation of the first five years of the project concluded that for every £1 spent, £4.20 was gained in public benefits like clean air, better water quality and improved nature-based recreation opportunities for local people, and the project has been extended into 2025.

Another initiative is Severn Treescapes, joining up woodlands from the River Wye to the Wyre Forest. A neighbouring smallholding have just transformed a field into a young mixed deciduous woodland, complete with sunny rides, a new pond and flowery grassland. Why make a new woodland next to the oak forest? Because the aim is to go 'bigger, better and more joined-up'.

Linda Iles



Grainger Jones your local independent financial adviser

Grainger lives in Cleobury Mortimer giving the residents and surrounding areas a dependable financial planning service.

- **Wealth Management**
- **Retirement Planning**
- **Investments & Savings**
- **Family & Business Protection**

An initial consultation is available at no charge

To book an appointment or just have a chat, please contact Grainger below.

tel: 07974 100089

email: grainger@meridenfp.co.uk

website: www.meridenfp.co.uk



Bagginswood, Cleobury Mortimer,
Nr. Kidderminster, Worcs. DY14 8NB
Telephone: 01746 718732

Heath Farm Meats, Bagginswood

Opening Hours

Wed 8am to 5.30pm, Thurs 8am to 7pm, Fri 8am to 5.30pm, Sat 8am to 12.30pm

Straight from Our Farm to Table

We rear & sell all our own beef, pork, lamb & mutton through our shop on farm. We also make our own flavoured sausages, burgers, home cured bacon, gammon etc. No order to large or small.

Hams ● All Poultry ● Honey ● Mawley Milk & Cream ● Ashley's Cakes & Bread ●
Jams ● Eggs ● Cheeses ● Apple Juice ● Potatoes ● Meat Pies ● Sticks & Logs

Telephone 01746 718732 with your order to arrange a date & time for collection



TURNERS GATES

bespoke sizes at standard prices



A small family run business specialising in quality wooden gates to suit all entrances.

Visit our website: www.turnersgates.co.uk

Drop us an email: turnersgates@outlook.com

Or give us a call on: 01299 270 965





It is a great delight to be writing to you as the newly elected Member of Parliament for South Shropshire. I want to start by paying tribute to my predecessor, Philip Dunne. For almost two decades, Philip has diligently championed issues which matter to local people. I am grateful for his wise counsel as I prepare to represent South Shropshire.

I grew up in Herefordshire before joining the Army for eight years on numerous operational tours. After this I entered the defence and security industry, operating around the world. I have served in Parliament since 2019 and I am delighted to start representing South Shropshire, where me and my family live in and love very dearly.

I want to thank the people of South Shropshire for believing in me and giving me a chance to be your local representative in Parliament. I am dedicated to being a strong voice for South Shropshire in Parliament and to delivering for our priorities. From supporting our farmers to enhancing public services and from investing in infrastructure to protecting the countryside, we will support our communities and unleash rural prosperity in the years ahead.

I was honoured to play a central role as Parliament met on Tuesday 9 July for the election of the Speaker of the House of Commons. As a newly appointed interim

Shadow Deputy Chief Whip, I represented the House of Commons in a ceremonial process where we attend the House of Lords to receive a message from the King asking us to elect a Speaker. We then returned to the Commons and immediately began the process of doing so. In this role, I am responsible for coordinating my party's contribution to parliamentary business - ensuring that, as the official opposition, we hold the new Government to account on its actions.

Since being elected, I have got stuck in at local events in Church Stretton, Atcham and Chelmarsh. Events like these are important for communities and enable me to listen to resident's concerns. I am also delighted that Shropshire Council is set to agree to keep the household recycling centres open in Bridgnorth and Craven Arms, the only two in South Shropshire. These sites will ensure that we can continue to recycle our waste safely and conveniently, with minimal impact on the environment. This decision also protects our precious countryside from issues like fly-tipping, which could have been exacerbated had these closures gone ahead. So, I would like to thank everyone who worked on this campaign to secure this favourable outcome for both local residents and our environment.

There is a lot of work to do, but some of my immediate concerns are for the investment the previous Government promised for Shropshire's hospitals and for road resurfacing. I know this investment is badly needed, so I have already got to work in calling on the new Government to honour these commitments ahead of the King's Speech during the State Opening of Parliament.

I will work tirelessly to ensure the voices of residents across South Shropshire are actively listened to and will keep you updated with the progress I make.

Stuart Anderson

Mark Pearce

Landscape, Design and Rustic Garden Furniture

- Fencing
- Patios
- Drives
- Decking
- Garden Sheds
- Summer Houses
- Fence Panels
- Log Stores



And Much More

Top Quality Fully Treated Timber Products

Mobile: 07875425028

Tel: 01746718404

Robert Bradley Logs

07794 798616



*Seasoned Firewood, Hardwood,
Softwood or Mixed loads of logs.
Free Local Delivery*



Fresh milk and cream from
Cleobury Mortimer

www.mawleytownfarm.co.uk

01299 270359



CAROLE CLAYTON

INDEPENDENT FUNERAL CELEBRANT

07971 543790

celebrant@preciousmemoriescelebrant.net

Find us on Facebook
[@preciousmemoriescelebrant](https://www.facebook.com/preciousmemoriescelebrant)

UK Enterprise Awards
Funeral Celebrant of the
year 2023 (Worcester)

Shropshire, Herefordshire &
Worcestershire.

Cleobury Clarion August 2024

Page 24



Cleobury Mortimer Benefice
Church services throughout the Benefice in August

St Mary's Cleobury Mortimer

Sunday 4 th August:	10.00am Family Eucharist
Sunday 11 th August:	8.30am Said Eucharist
	10.00am Parish Eucharist
Sunday 18 th August:	10.00am Parish Eucharist
Sunday 25 th August:	10.00am Parish Eucharist

Every Wednesday: 10.00am Eucharist
Every Thursday: 10.00am – 11.30am: Drop in at St Mary's. Drop in for a free cup of tea or coffee.

St Michael and All Angels', Hopton Wafers

Sunday 4th August: 9.30am Eucharist
Sunday 18th August: 9.30am Eucharist

St John's, Doddington

Sunday 4th August: 11.00am Eucharist
Sunday 18th August: 3.00pm Evening Prayer

All Saints', Neen Sollars

Sunday 4th August: 11.00am Village Worship
Sunday 11th August: 11.00am Village Worship
Sunday 18th August: 11.00am Village Worship
Sunday 25th August: 11.00am Village Eucharist

St George's, Milson

Sunday 4th August: 6.00pm Even Song
Sunday 18th August: 11.00am Parish Eucharist

St Mary's, Neen Savage

Sunday 4th August: 6.00pm Evening Prayer (BCP)
Sunday 18th August: 9.00am Parish Eucharist (BCP)

St John the Baptist, Kinlet

Sunday 11th August: 11.15am Parish Eucharist (BCP)
Sunday 25th August: 6.00pm Evening Prayer (BCP)

Leadership Team:

Rector: Reverend Prebendary Ashley Buck: 07477 165602
Curate: Reverend Sarah Lupton

Church Office: Open Tuesday & Thursday 8.00am – 2.00pm Email: cleoburychurch@hotmail.com
Website: www.cmbenefice.com



FLOWERS by FIONA
07875-077941

SPECIAL OCCASIONS
WEDDINGS & FUNERALS
FBK ~ Instagram ~ WhatsApp



Soft furnishing and
Interior Design Services

Masquerade
Fabrics Limited

01299 271 680

36 High Street Cleobury Mortimer near Kidderminster
Worcestershire DY14 8DQ

Retailers for Sanderson, Harlequin, Monkwell
Crowson and many more...

Comprehensive design, measuring and fitting service.

TDC CARPENTRY SERVICES

Fully insured qualified professional
Excellent workmanship and quality customer care
From hanging doors, fitting kitchens to bespoke projects

Tim Clare - 07890 519980



AMY'S FOOT HEALTH
FOOT HEALTH PRACTITIONER
AMY FRANCE DipFHP, MCFH

Services include:

- Routine Nail Trimming
- Callus Reduction
- Corn Treatment
- Fungal Infection Treatment
- Cracked and Dry Heal Treatment
- Thick Nail Reduction
- Ingrown Nail Treatment
- Cream and Massage
- Medical Pedicure
- Pedicure
- Lower Leg and Foot Massage

MOBILE: 07925 236221 ASK FOR AMY OR LEAVE A MESSAGE

HANDY MATT

**FOR ALL THOSE JOBS YOU NEED DOING OR NEVER GET
DONE AROUND THE HOME AND GARDEN!**

CALL ME TODAY AND GET THEM DONE.

**RESTORATION, ROOFING, GUTTERING, BRICKWORK,
REPOINTING, CARPENTRY, INSULATION, DECORATING,
TILING, FLOORING, DAMP PROOFING, STOVE FITTING, GROUNDWORKS,
LANDSCAPING, PATIOS, FENCING,
GARDEN MAINTENANCE.**

TEL: 07731 459631



BAGGINSWOOD

Bagginswood, Cleobury Mortimer,
Nr. Kidderminster, Wores. DY14 8NB
Telephone: 01746 718732

Heath Farm Meats, Bagginswood

Opening Hours

Wed 8am to 5.30pm, Thurs 8am to 7pm, Fri 8am to 5.30pm, Sat 8am to 12.30pm

Straight from Our Farm to Table

We rear & sell all our own beef, pork, lamb & mutton through our shop on farm.
We also make our own flavoured sausages, burgers, home cured bacon,
gammon etc. No order to large or small.

Hams ● All Poultry ● Honey ● Mawley Milk & Cream ● Ashley's Cakes & Bread ●
Jams ● Eggs ● Cheeses ● Apple Juice ● Potatoes ● Meat Pies ● Sticks & Logs

Telephone 01746 718732 with your order to arrange a date & time for collection

READING GROUP

A small group met on a warm July evening to voice their thoughts on 'The Forty Rules of Love' by Elif Shafac. Thanks to those unable to attend who submitted opinions.

The book was composed of two parallel stories, narrated alternately. Present day America, where Ella lives a family life and is reading a manuscript 'Sweet Blasphemy'. This is set in 13th century Konya and features a poet, Rumi and Shams of Tabriz, a Sufi. His rules of love are gradually revealed, together with a mass of unusually named characters. Ella finds her life changing and eventually meets the author, Aziz Zahara. Opinions ranged from "adored it" to "mystical rubbish", others enjoyed it or found it too complicated. It contained much information on religion, assuming facts correct and some lovely prose and quotations. We appreciated the idea of connecting with others through kindness and understanding. A good effort at explaining Islamic ideas using a modern story. An interesting book though not really entertainment. If you are intrigued and would like to know more, order a copy from our local library and judge for yourselves. Leaving the Dancing Dervish behind we now go back to Southern England to read 'The Mayor of Castlebridge' by Thomas Hardy, gathering again on August 19th.

Deana Kimber 01299271754

FAMILY FUN DAY

The Sparc Theatre in Bishops Castle have a Family Fun Day on Thursday the 15th from 10.00am to 2.00 pm. They are offering a range of outdoor and creative activities for all ages, with a movie as well. At just £5.00 a head, it's good value, but the children must bring their own lunch and Under 7s must be accompanied by an adult.

Full details from Dan at goingwild@lightfootenterpris.es.org

FLICKS IN THE STICKS

On Saturday 17 August, we will be showing Scrapper. This vibrant and inventive father-daughter comedy follows Georgie (Lola Campbell), a resourceful 12-year-old girl who secretly lives alone in her flat in a working class suburb of London following the death of her mother. She makes money stealing bikes with her best friend Ali (Alin Uzun) and keeps the social workers off her back by pretending to live with an uncle. Out of nowhere, her estranged father Jason (Harris Dickinson; Triangle of Sadness, Beach Rats) arrives and forces her to confront reality. Uninterested in this sudden new parental figure, Georgie is stubbornly resistant to his efforts. As they adjust to their new circumstances, Georgie and Jason find that they both still have a lot of growing up to do.

Robert

CLEOBURY

PATIENTS' VOICE

A forum for local people, to find out about local healthcare issues. If you have a topic you'd like discussed, forward it to Anita Rose at ranitajayne@aol.com.

Dr Elizabeth Palmer has retired and Dr Maddy Venables has joined on a part time basis. Dr Venables will be taking over care at Doddington Lodge. Dr Katy Trevithick will be joining the practice to assist with family planning appointments. The practice also has two registrars working side the GPs.

Some patients have trouble accessing the Patient Access App. If you are interested in sessions to provide education benefits and use of the app, please contact Kim Murrells at the surgery.

Cleobury Pharmacy currently have no pharmacist and are using regular locums. A staff member from the pharmacy attends clinical meetings to pass on and receive feedback.

Anita Rose

SILLY BITS

A man walked up to Stephen Fry, shook him by the hand and said "I wish I had one tenth of your talent."

Stephen detached the hand from his and said "Consider your wish granted."

CIRCUS SUMMER SCHOOL

Week 1: 5-8 August (Mon-Thurs):
The Elephant with a Toothache

Week 2: 12-15 August (Mon-Thurs):
The Mystery of the Midnight Lions

FAMILY FILM | The Greatest Showman (PG)

Mon 5 Aug, 2pm

FAMILY FILM | Kung Fu Panda 4 (PG)

Tue 6 Aug, 2pm

FAMILY FILM | Despicable Me 4 (U)

Fri 9 Aug 7pm, Tue 13 Aug 2pm

FAMILY FILM | The Garfield Movie (U)

Mon 12 Aug, 2pm

FAMILY FILM | Harold and the Purple Crayon (PG)

Fri 23 Aug 6pm, Sat 24 Aug 11am, Tue 27 August 2pm

FAMILY FILM | Noah's Ark (U)

Tue 27 Aug 11am

REGAL SUMMMER OF FUN

*programme as of 18/7/24

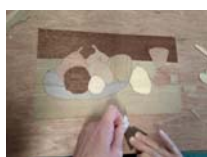
ALL
UNDER
16S FILM
TICKETS
ONLY £5!



01584 811 442  www.regaltenbury.co.uk   **@RegalTenbury**
REGAL TENBURY, 49 TEME STREET, TENBURY WELLS, WR15 8AE | Reg Charity No. 1148555



THE COMMUNITY WORKSHOP AND CAFE



Email thecwcafe@gmail.com to book

We are really happy to announce that we are adding to our **Men's Shed**. We now have workshops on a Tuesday and a Thursday 10.30 till 12.30 Last session of the year to be on 14th December.

We are looking for people to join our **Knit and Natter** afternoons on a Tuesday 1.30 till 4.00



TEL: 07984 354682  [@thecwcafe](https://www.facebook.com/thecwcafe) EMAIL: thecwcafe@gmail.com PARK ALLEY, BEWDLEY. WWW.THECWCAFE.UK

CLEETON ST MARY AND SILVINGTON VILLAGE HALL
AVAILABLE FOR PRIVATE HIRE
PARTIES-CHRISTENINGS-FUNERAL CELEBRATIONS-
COMMUNITY EVENTS
CAR PARKING-KITCHEN-OUTDOOR AREA
CALL US: 07908 791262
EMAIL:cleetonvillagehall@gmail.com
Facebook: cleetonvillagehall

CARING FOR GOD'S ACRE.

Anni Calver reports

Good news for Shropshire last month when something old, but new to us, was discovered. Did you spot the news that the National Trust at Attingham Park, right in the centre of the County have discovered a couple of Roman villas within the parkland which makes up a very large site.

The Trust had not been planning to find anything when they decided to do a huge geophysical survey of the site. The reason for their survey was to start looking at climate-change-aware land use. It was aimed at giving them more knowledge about their land; it covered 1000 hectares. I am not too good at hectares (or acres for that matter) but I do know it's very big as I have visited the site many times.

These surveys are so clever these days that they could see the floor plans for the villas and their outbuildings. For those who know that part of Shropshire, will know that Wroxeter, the remains of a Roman City called Viriconium Cornoviorum is not too far away. Maybe these villas were on the edge of that town?

But the survey showed even more earlier and later history. Exciting for me is the Anglo-Saxon hall, which they knew existed previously, but now there is much more detail, even though it is still underground. Anglo-Saxon England is the

age I love and I am working on an Anglo-Saxon church trail for Shropshire Churches Tourism Group (SCTG). We will be able to offer a good coach trip day out and possibly a 5 day holiday break - I still have work to do, but I am encouraged to think there is even more from that era in our County.

And just when you thought that was all, they found some Iron Age farms and a World War 2 airfield, which was part of Attingham Park for 5 years from 1941- 1946, a base for the United States air force. It seems that our county has been inhabited for thousands of years, a history we should be very proud of and protective of all these sites.

So as the Secretary of SCTG can I suggest you can find lots of history for the last 1000 of those years in our church buildings, one in every village! Pick up a brochure from your local ancient building and you will see more than 100 churches with lots of history, the stories of our ancestors. Step through a few of the doors and support those who are caring for these buildings for us all. It's a nice day out too.

Anni Holden Calver, Secretary of Shropshire Churches Tourism Group (SCTG)

www.discovershropshirechurches.co.uk

Trustee of Caring for God's Acre and Churchyard Task Team cheerleader!

SHROP SWEEP

CHIMNEY SWEEPING

- Rotary & Manual Chimney Sweeping
- HD Camera Inspections
- Smoke Testing
- Trained by National Assoc of Chimney Sweeps
- Professional, Clean & Efficient

- Great Customer Service
- Certificates Provided
- Competitive Rates
- Availability to fit all schedules

Contact Mark on: 07538 533865
Email: shropsweep@gmail.com

WESTONS

WILLS AND PROBATE

Come and see us at our riverside offices located in the heart of Bewdley at 18 Severn side South.

With over 30 years' experience, Mandy and her team offer a personal and professional service specialising in will drafting, lasting powers of attorney, deputyship applications and probate.

Previous clients feedback has included the following comments:

"I've used Mandy at Westons Wills and Probate numerous times over recent years covering all aspects of her expertise. Her guidance on the way forward and solutions to issues that she has suggested has been excellent. She is extremely communicative and responsive, and handles difficult situations with compassion and empathy. I have happily and confidently recommended her services to everyone I know that would benefit from her services."

"Mandy Weston of Westons Wills and Probate is a very professional and knowledgeable person. She has now become my 'go to' legal adviser and has taken on many legal tasks for me and my family. Wills, Probate, Inheritance Tax and Powers of Attorney. I trust her judgement and experience to act in mine and my family's best interest. I would highly recommend her legal services to anyone."

Tel: 01299 405873

"Great expertise and a friendly professional manner"

Contact Mandy Weston Phone 01299 405873 Mobile 07931 411733
Email enquiries@westonswillsandprobate.co.uk Website www.westonswillsandprobate.co.uk
Address 18 Severnside South, Bewdley, Worcestershire DY12 2DX

N.R. Evans Landscaping

- Grass cutting
- Strimming
- hedge cutting
- garden and site clearance

- Fencing, including:
- Panel fencing
- Post and rail fencing
- Picket fencing
- Stock fencing

domestic and commercial customers welcome

Call for a chat on 07535 902847

Email: nrevansgardenmaintenance@gmail.com Facebook: N.R.Evans Garden Maintenance



THE AGENCY UK

Local, personal *and* dedicated Estate Agents

THE LATEST FROM CORAL & TOM...

The Wyre Forest property market has shown steady growth in May and June 2024 with demand continuing to attract buyers for its blend of rural charm and urban convenience. Property prices increased by about 4% compared to this month last year with detached houses, bungalows, and energy-efficient homes being particularly popular. Period properties and cottages also remain in demand for their unique appeal.

The outlook remains positive, with confidence in the market thanks to interest rates being held and expected to lower in August, alongside government inflation targets being hit. Buyers and sellers should, however, stay informed about broader influences including the upcoming election that could see new changes in legislation that each political party is pledging if they come to power.

If you would like to talk about the market and how it's affecting your property value or about an impending move, please do not hesitate to contact us for a chat.



Coralie Walrond MNAEA MARLA

Tom Jackson MNAEA

📞 **01562 541053**

✉ kidderminster@theagencyuk.com

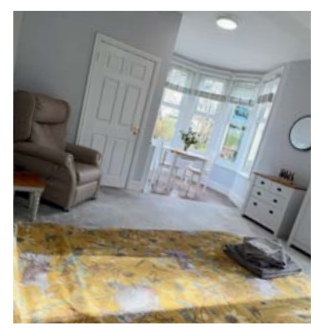
Scan code to visit
our website



Brookside, Eagle Lane, Cleobury
NOW SSTC
Sale agreed over asking price!



**Doddington
Lodge**
Residential Care Home



living with us at Doddington Lodge

Care and Warmth at its Heart

We would like to welcome you and your family to Doddington Lodge, our newly renovated, privately owned residential and dementia care home in the historic, tranquil hamlet of Doddington, Nr Cleobury Mortimer. Located on the beautiful Worcestershire & Shropshire boarder, providing picturesque views from every aspect of our home.

With a modern bistro dining room and bar with a delicious daily menu created by our accomplished chef. Individually designed spacious double rooms, allowing couples to stay together or beautiful single rooms all with en-suites and stunning countryside views. Even a hairdressing salon for a little pampering to provide a place of well-being.

Doddington Lodge is a place where friendships are made and special moments are shared. We organise many fun activities that everyone can get involved with, whether that's a sing along, arts and crafts, collecting fresh veg from the allotment or just simply helping each other with a crossword in our daily newspaper. Each day is different, we certainly have many happy moments...

Our home is a loving community and family, where you can consider Doddington Lodge a home away from home. We will provide you with all the key information, guiding you through every step of the process, whether you are staying with us for a short or long stay.

**Come along!
Coffee morning
on Friday 9th
August 2024**



Join us for a warm cup of cheer
and plenty of laughs at our
monthly Doddington Lodge
Coffee Mornings!

Every 2nd Friday of the month, come together with residents, family & friends over tea or coffee. Enjoy freshly baked cakes as well as the Doddington Lodge monthly raffle.

For only £2.50 per person – including your beverage and slice of cake – join us for our get-together on Friday, August 9th, 2024, from 10 am until midday.

We look forward to seeing you!

www.doddingtonlodge.com | E: enquiries@doddingtonlodge.com | T: 01584 707084

Doddington Lodge, Residential Care Home, Doddington, Nr Cleobury Mortimer, Shropshire DY14 0HJ.



Remember to follow us



CELEBRATIONS GALORE AT DODDINGTON LODGE



This month at Doddington Lodge, we've had a lot to celebrate! We've enjoyed not one, not two, but three birthdays, each filled with joy and special moments.

First, we celebrated the wonderful Desmond's birthday. The day was extra special with a fabulous Irish-themed and sports car cake. The atmosphere was lovely, filled with lots of smiles and laughter as everyone joined in to make Desmond's day unforgettable.



Next, we wished a very happy birthday to a special lady, Jenny. It was a lovely day marked by heartfelt messages, beautiful flowers, delicious cake, and cherished time with family.

Jenny, your day was as special as you are to us.

We then got to celebrate another special lady, Jean. Jean's birthday was filled with love, laughter, and a very delicious cake.

Here's to more celebrations and wonderful moments at Doddington Lodge!

DODDINGTON LODGE MONTHLY COFFEE MORNING

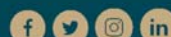
Thank you to everyone who joined us or our Doddington Lodge Coffee Morning. It was fantastic to see everyone! The atmosphere was warm and welcoming as we enjoyed delicious home made cakes, cups of tea and coffee, all while having wonderful conversations.

Don't forget to save the date for our next Coffee Morning, which will be held on the second Friday of the month, Friday, August 9th, 2024. We look forward to seeing you there! We love these opportunities to catch up with our friends and neighbours.



www.doddingtonlodge.com | E: enquiries@doddingtonlodge.com | T: 01584 707084

Doddington Lodge, Residential Care Home, Doddington, Nr Clebury Mortimer, Shropshire DY14 0HJ.



Remember to follow us

CARTER'S ANTIQUES



We are looking to purchase all manner of antiques, jewellery, coins, medals and curiosities.

For a free valuations kindly telephone
John Carter: 07779 311792
Or email: johnbarney743@gmail.com

Alan Smith Aerials

Digital TV Installations.

Freeview aerials fitted and distributed around the house.

Freesat box, dish, and cable supplied and fitted. One off payment, **No contract or subscription required.**

Extra points, Repairs, New fits, Set ups, Multi room.

All work is carried out by a **Local**, fully qualified and insured installer.

01299 270007 or 07970 675728



Natalie Taylor

Dip CFHP MPS Pract.

Specialist Foot Health Practitioner

Specialising in:-

- In-growing toenails
- Fungal infections
- Nail trimming
- Verrucae
- Calluses
- Corns

All from the comfort of your own home.

If you would like to make an appointment, please call on **07779 113982 or 01584 890112**



COUNTRY SKILLS

CPCS/NPTC Approved—fully insured

- Outside Renovation
- Tree Surgery, Hard Landscaping
- Slabbing and Fencing
- Decking, Roofing
- Contract Mowing

Call for a free quotation

R. Price & Sons

Mobile: 07967 140720 Email: roger@country-skills.co.uk



Claire Bradley Floral Designs

Florist for all occasions, specialising in wedding and funeral flowers

Winner of the Matrimony Award 2020 Best Wedding Florist
Nominated for 2021 Matrimony Awards

Christmas workshops available



Email: clairebradley1@icloud.com
01299 270415 or 07980 580770



SINGING LESSONS

Professional singer and
experienced teacher recently
moved to this area
Vacancies available
All styles, ages, standards
welcome

Contact Angela Kazimierczuk on



Domestic oil-fired boiler breakdown & maintenance services.

27 years' field-service experience with leading UK boiler manufacturer Worcester Bosch.

Donovan Taylor

Tel: 01299 828670 or 07807 837040

donovan.taylor@sky.com

www.greenstar-boiler-repairs.com

Caring about your environment and providing an honest, professional & reliable service you can trust



G W

Tree Stump Removal

Commercial and residential.

Fully insured, qualified and professional.

Your property left neat and tidy.

Happy to give quotes with no obligation.

Ring Sam: 07787095668 or 01299832549

Email: sam@gwstumpremoval.co.uk

Pollarding, Pete & Preparing for Winter 2026

Our garden is blessed with some remarkable trees: willows that sway and sigh in the breeze, ash trees that are unfortunately falling prey to the dreadful ash dieback, and mighty oaks that stand tall and stately.

And then, quite inexplicably, there's a Christmas tree.

We suspect the previous owners planted this tree many moons ago, perhaps for a yuletide laugh. I can almost hear them, high on bonhomie and Baileys, chuckling as they stuck the baby tree into the ground, likely saying, "Let's see what happens!" Well, I'll tell you what happens – they grow bloody huge. So huge, in fact, that the slightest gust of wind made it teeter terrifyingly close to our house.

On top of that, it also blocked the view. It had to go.

At the same time, we had to tackle a willow that had split and was generally looking rather sorry for itself. Our solution was a touch of pollarding. For those not in the know, pollarding is the act of taking off the top of a tree, reducing it to little more than a tall stump, and then praying furiously that it will burst back into life.

A beefy young chap from Clee Hill came down and got to work, and in a few hours, we were done, and I could sleep soundly, safe in the knowledge that we wouldn't have a huge tree falling through the roof. And in more good news, the pollarding (and subsequent praying) worked, and our tired willow tree has risen like a phoenix from the flames. Hurrah.

However, the story doesn't end there. Tree felling inevitably leads to some huge sections of trunk lying over the driveway. I

have a chainsaw, but frankly, it's so small and underpowered that I might as well have picked it up from ToysRUs – imagine if Fisher Price made a chainsaw for a particularly cack-handed toddler, and you're getting close. It was time to call in the big guns – enter stage right, my mate Pete.

Pete loves chopping wood. He gets a wistful look in his eyes when he's wielding one of his many chainsaws (proper grown-up ones) and ripping tree trunks asunder. He takes almost as much pleasure in splitting them using some ancient tool on the back of his tractor—a man at one with his tools. My job is to keep out of the way during the scary bits and keep the cups of tea flowing. I know my place.

After hours of happy toil by Pete, we now have a mountain of logs that will need to season for a good year or so. This means stacking, which is (finally!) something I'm rather adept at. I've even got a book on it – "Norwegian Wood: The Guide to Chopping, Stacking and Drying Wood the Scandinavian Way." It's one of those books people buy you at Christmas when they've decided that even more socks would be a bad idea.

So ahead of me are countless hours of barrowing, stacking, rearranging, and generally losing myself in the smells and simple pleasures of storing wood for the cold winter evenings of 2026 and beyond.

There's something profoundly satisfying about the whole process. Each log, each carefully constructed stack, represents a small victory over chaos. Yes, the garden may have lost an ugly and ridiculously overgrown Christmas tree, but in return, we now have a stack of wood to keep us warm for future Christmases.

It's all very zen, isn't it? *Simon*



TWS Kidderminster, are a premium home improvement company, offering bespoke windows, doors, and roof systems with a high-quality finish at competitive prices.

With over three decades in the industry we pride ourselves on offering extensive knowledge and a service you can rely on.

As comprehensive home improvement specialists, we take pride in installing a wide range of double-glazed products. TWS work with industry leaders and our employed fitters are CERTASS registered.

Investing in our products will not only visually enhance your property but also offer the industry's best in thermal performance technology and high security. All of our products are made to measure and can be customised in an array of colours and finishes to suit your home.

Walk in anytime! The showroom is open 6 days a week including 9am to 4pm on Saturdays, you can even bring your dog as our showroom is dog friendly too with fresh water, toys and treats to hand!

www.twswindowsanddoors.co.uk sales@twshq.com 01562 822855 Unit 5, Lupin Works, Worcester Rd, Kidderminster DY10 1JR

CM BESPOKE CARE LTD.

CM AURICULAR HEALTHCARE
SERVICES FREE
FOR ALL CLIENTS!
Ear Health Checks
Wax Removal
Hearing Screenings
+ Much More

WE CARE

Providing The Following Range of Services:

- Care In Your Own Home
- Nursing Led Care
- Palliative Care
- Personal Care
- Adult Social Care
- Mental Health Specialism
- Learning Disability Care
- Young Adult Care
- Social Calls
- TDDI
- + Many More

Ground Floor Office Suite,
Upper Baveney Park,
Cleobury Mortimer,
Kidderminster,
DY14 8LF

PROVIDING CARE & SUPPORT

Worcestershire county council
Shropshire Council
NHS
CARE
SPiC
Dementia Friends

Tel: 01746 718816
Email: cmbespokecare@outlook.com

Regulated by
Care Quality Commission

Shropshire Partners in Care
Dementia Friends
An Alzheimer's Society Initiative

f /CMBespokecare
ig /cmbespokecare



REVIVE BATHROOMS

COMPLETE BATHROOM INSTALLATION SERVICE

07971 361901 or 01299 832484



Complete Bathroom Installations
Bathroom Refurbishment or Repairs
Wet Rooms
Professional Wall and Floor Tiling

For a quality and guaranteed service, call Stuart for a free quote
 Highly Recommended / References available - see my reviews on www.freeindex.co.uk

FOR THE BATHROOM YOU DESERVE!



Elite Sweeps

Professional Chimney Sweep

& HETAS Stove Installer

- ✓ Prompt, reliable & friendly service.
- ✓ Cows and Chimney Pots fitted.
- ✓ Fully qualified and fully insured.
- ✓ Guild certificates issued after every sweep.
- ✓ HETAS Approved Installer.



Call Eddie

Tel. 01299 382222 / 07895 612915

www.elitesweeps.co.uk





Hollywaste Holiday Lets

Our 2 bedroom (ensuite) cottage, sleeps up to 6 adults, situated in Hollywaste, Cleobury Mortimer. Fully equipped kitchen, open plan living room with log burner, dining area and downstairs WC. Includes Freesat and fast WiFi. There are enclosed & open decking areas outside, to take advantage of the beautiful countryside views, and a grassed area for outdoor games. Open all year round and welcomes adults, children, 1 large dog or up to 2 small dogs


Discount of 10% available for locals simply quote "keepitlocal" at the checkout

Events we can accommodate:
 Staycations, Pamper weekends, Shooting weekends, Wedding venue, Minimoons stays, Stargazing weekends,
 Cookery weekends & events, Camping and caravan pitches are also available!
 If you're interested in hiring our space or land for any event and time frame.

Tel: 07962 151322 Email: hollywasteholidaylets@gmail.com FB: <https://www.facebook.com/HollywasteHolidayCottage>
 Website: <https://hollywasteholidaylets.squarespace.com> for more information



Glenys Turpin Reflexology



Reflexology is a non-invasive form of complementary medicine. It involves a method of treatment in which pressure is applied to the feet or hands to treat a wide range of ailments and is effective in promoting deep relaxation and well-being.

Reflexology does not claim to cure, diagnose or prescribe. It may be used alongside orthodox medicine and may be helpful with stress related symptoms and other conditions.

For more help and information contact Glenys...

5 New Road, Cleobury Mortimer. glenturp@hotmail.co.uk 07763 332759

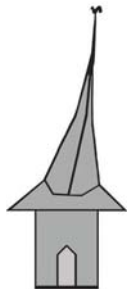
Diploma of The Bayly School of Reflexology, Member of The British Reflexology Association

MOBILE FOOT HEALTH CARE

Providing a thorough nail and foot
care treatment in the comfort of
your own home.

**Registered and insured
practitioner.**

STACEY WILLIAMS FHP Dip RFHP



Cleoburrs

**CARDS, GIFTS, HOMEWARE, HARDWARE AND
EVERYDAY ESSENTIALS!**

We have a great range of stock! Competitive prices AND We are open 7 days
Pop inside before you pop online!

18 High Street, Cleobury Mortimer

Tel: 01299 489590

Email: cleoburrs.onthehighstreet@gmail.com

Like our Facebook page CLEOBURRS

BODEN & SON Milk est. 2013

Not only do we deliver fresh Mawley Milk from the farm to your doorstep,
we also deliver: cream , eggs, butter, fruit juice & now.....



Ashley's fresh bread

Telephone: 01584 891550

EMAIL boden6400@gmail.com



Hobbs Building Services

EST 25Years.

A Total Plastering, Maintenance and Building Service for your home,
business and outbuildings.

Insurance work undertaken

Emergency call out service for general plumbing, roofing, boarding up damaged doors and
windows. For a free quote please call;

Ian on; 07967190742

Email: hobbsbuildingservice@yahoo.co.uk Or Call/Text Kelly on; 07790085307

New Friends. I am looking to meet
new female friends in Cleobury
Mortimer and the surrounding
area. Age group 45 to 60 years.
Please email via the Clarion editor.

Rachel Siddall

DipCFHP, MPSPract

Footcare in the privacy of your own
home:

Nail trimming
Ingrowing toenails
Corn removal
Thickening nails
Callus reduction
Verruca treatment
Diabetic foot care



**Foot Health
Practitioner**

07478 007913

Cleobury Opticians

NHS & private eye tests ♦ FREE children's glasses

FREE NHS glasses ♦ Home visits



Opening Times-

Tuesday	9am-1pm 2pm-5pm
Wednesday	9am-1pm 2pm-5pm
Thursday	9am-1pm 2pm-5pm
Friday	10am-2pm
Saturday	9am-1pm

www.cleoburopticians.co.uk

16 Church Street, Cleobury Mortimer, Kidderminster
DY14 8BX

Tel: **01299 270012**

Email: cleoburopticians@outlook.com



All Aspects of carpentry work undertaken

Level 3 City & Guilds in Carpentry & Joinery, 20 years of experience

Tel: **07854 032750**

Email: duncpearce1@gmail.com

Stewart Mumford Architectural Services Bespoke Architecture

Great value personal service backed up with extensive local knowledge, established links with other construction professionals to ensure comprehensive packages specifically tailored to individual needs.

Initial consultation free of charge.

Specialist in Works to Listed Buildings, Affordable Houses, Open Market Houses, House Extension and Alteration, Barn Conversion and Commercial Projects.



T: 01299 271068

M: 07977 921039

E: office@stewartmumford.co.uk



A M Plumbing & Heating

- *General plumbing
- *Oftec approved
- *Bathrooms
- *Oil boilers
- *Hot water cylinders
- *Servicing
- *Central heating
- *Power flushing

Call Today: 07565 181554



TOTAL PROPERTY MAINTENANCE

Fireplaces built for multi-fuel burning stoves,
Plastering, Building & General Maintenance

Rob Taylor

Mobile: 07944 074540

Landline: 01299 832734

Email: rptbuilding@hotmail.co.uk

Quality firewood for sale

We source our wood from a
reputable and sustainable source.

Can deliver up to 20 mile radius from
Bayton (DY14 9NA).

We can do multiple and large loads.
Please call to enquire on pricing.

John Edwards 07531025018



H.C.P.C Number CH22527

Cleobury Chiropody Janet Manley

Qualified Chiropodist
MSSCh. MBChA
BSYA (reflex) REIKI Master

Tele:- 01299-272841

Mob:- 07805-268439

Email: janetpmanley@yahoo.co.uk

2, Tenbury Road,
Cleobury Mortimer,
Kidderminster,
Worcs.
DY14 8RB

A Round Of Appaws

Professional Dog Groomer
C&G Levels 2 & 3 Diploma

Fully Insured



Call or text Jules on

07368359144

aroundofappaws1@gmail.com



A. Farr Painting & Decorating

Give your home a beautiful new look....

Contact:

andyfarr12345@gmail.com 07815 855340

Lisa Steward Ironing services

Hopton Wafers



Please call: 07581065436 for more information

Sad news that Lacon Childe school has been downgraded to 'requires improvement' by Ofsted following a recent inspection. They have had a tough time this year needing a temporary Head, not to mention all the residual problems caused by Covid. One of the problems cited was that a minority of pupils were disruptive which affected the work of others. You would think there was a simple solution – punish the miscreants. But how?. When I was at school back in the dark ages, a variety of measures were available to show errant pupils the error of their ways. Detentions, lines, caning, but now?. As far as I can see, teachers have few, if any tools to maintain order. I suspect that now, even giving a scallywag a severe look would result in a written warning. Add to this the grief that any teacher being that rash would get from parents who have never said no to their spoiled brats and don't see why anyone else should. Who would be a teacher now?. Perhaps the motto of any progressive school ought to be 'A cattle prod in every classroom' (I await the screams of horror...)

More developments at West Mercia Police: The acting Chief Constable who, you may recall, was passed over for the job in favour of another who then withdrew, has now voted with his feet and is leaving for a job at the National Crime Agency. So we now have an acting acting Chief Constable (I think) whilst the search starts again for a permanent incumbent. What a shambles.

So, we have a new Government and we will all be saying that they can't be worse than the last lot. Sadly, history tells us that they usually are... There is good news for some as the Rwanda project has been scrapped. As ever, there is also bad news as the Rwandan Government has said that they have no obligation to return the £270 odd million we threw at them. Sorry Rishi but they saw you coming...

Still, our new leaders have promised a

different approach and I wonder if this might involve a more hands on attitude in the great Socialist tradition. Whether this proves to be supportive or intrusive only time will tell. Lets hope we don't end up with the scenario that Ronald Reagan joked about when he said that the nine most terrifying words in the English language were: 'I'm from the Government and I'm here to help you' (although that is actually 10 words...). I just hope that there will not be as much infighting as there was in the last government although I suspect that the Corbynistas are not done yet. The party seems to be united at present but as Ricky Gervaise said in 'The Office' 'You have to get 100% behind someone before you can stab them in the back'. There are also the Unions who will be relishing the prospect of various renationalisation possibilities with the attendant increase in jobs.

At least one person must have read last month's column as, just today, I saw a Traffic Enforcement Officer in the High Street who had been giving out tickets...As with so much, you read it here first (but don't forget Friday evenings)...

Some news on the Post Office. Apparently the premises have now been sold and the new owners are looking at the possibility of reopening. This will require all the existing kit to be checked and made good if necessary but the Post Office is taking the less than supportive view that it won't pay for any repairs or updates so we shall see.

The good news: Apparently if all Banks in an area shut, a 'Banking Hub' can be set up to serve the local population. The bad news: Towns have to have at least 7000 inhabitants living within 1 kilometre to qualify. As Cleobury only boasts about 3000, it would appear that we don't. This is farcical as most banks that have shut are in rural areas yet they are excluded from the scheme. Still, it makes a good soundbite.



Fully qualified electrician and bathroom fitter with over 30 years experience

- Electrical Installations & Repairs
- Bathroom & Kitchen Installations

Call Steve on: 07791 492 951
enquiries@selectrical.co.uk





Little Detton

Home Grown Meats

Cleobury Mortimer
 DY14 8LW
 07825030607
www.littledetton.co.uk

Free delivery for orders over £30 within 10 miles

Rare Breed Beef, Lamb, & Pork, Sausages, Bacon & Gammon, Free Range Chicken
See us at the Farmers Market

HIS & HERS
Dog Grooming Parlour

All breeds and
 Cross breeds professionally
 Trimmed and Groomed




J. A. Guest
Tel: 07790 796 027

**Washing Machine
 Repairs and Sales**
JULIAN BREAKWELL
Telephone 07791 633 746
**Repairs to all makes, including
 Bosch, Hoover, Zanussi and
 Hotpoint**
NO CALL OUT CHARGE
FIXED LABOUR COST


Ever After

- Breakfast club
- After school club
- Holiday club
- "Forest schools" outings
- 15hrs education funding
- 24U funding
- Age ranges: 3 months to 11 years



Day Nursery
 Cleobury Mortimer
 Please contact us on 01299 272 777
 Or Call in to see us anytime.
 Friendly, Caring Environment for the Community

David Ward
firewood



Do you need a dependable consistent quality supply of seasoned or kiln dried hardwood and softwood firewood?

Cut and split to suit and delivered in breathable 1.2-cubic metre bags, so no need to restack.

Small delivery vehicle, fitted with crane, can deliver to most locations and situations.

CALL DAVID TO DISCUSS YOUR REQUIREMENTS:
Mobile: 07866 441154

Piano tutor
Francis Engleheart

*All ages — I specialise in teaching adults
 without previous experience*

I come to you

07710 288526 • fengleheart@hotmail.com

S. L. CARTER
**PROFESSIONAL PAINTER AND
 DECORATOR**

**PLASTERING, TILING, COVING AND
 GLAZING**

CLEOBURY MORTIMER
TEL: 01299 272868
MOBILE: 07815 483 029



W. BROWN

PLUMBING & HEATING



OIL BOILER ENGINEER

- Boiler servicing & repairs
- Worcester Bosch installer
- General plumbing work

07974121297 billejbrown75@gmail.com @wbrownplumbingheating

SEPTIC TANK EMPTYING

CHARLES MAIDEN

EST 1988

Waste Disposal Ltd



Routine & Emergency emptying of Domestic & Commercial:-

- SEPTIC TANKS
- TREATMENT PLANTS
- ALL SEWAGE SYSTEMS
- BLOCKAGE CLEARANCE
- GREASE TRAPS

Throughout Herefordshire, Shropshire & Worcestershire.

Call us now for your free quote.

01885 482305

info@charlesmaidenbromyard.co.uk

www.charlesmaidenbromyard.co.uk

Booton Brothers



Construction

Rich: 07445298747

Mike: 07853225401

bootonbrothers@outlook.com

All building work undertaken

Cleobury Mortimer Golf Club

At Cleobury Mortimer Golf Club we believe that a really enjoyable golf day takes more than just a great golf course. We make sure that your whole experience, from the friendly welcome in the golf shop to your drinks and meal in our relaxed clubhouse, is all part of a day you'll remember.



Everyone Welcome

Membership available.

Just some of the many benefits of joining Cleobury Mortimer Golf Club

- Access to full length 27- hole golf course
- Opportunity to achieve and maintain a handicap
- Family, Friendly Environment
- Playing opportunities at all times of the week
- A range of competitive opportunities
- Open dawn to dusk 363 days a year.

We look forward to meeting you at Shropshire's friendliest golf club.



01299 271 112 (ext 1)

pro@cleoburygolfclub.com

www.cleoburygolfclub.com

Brief background. My late wife and I made a joint will, leaving whatever estate we had in equal shares to our two sons. That still applies. And when Iain, the elder of the two, was visiting a while ago he suggested that the house needed painting and the bathroom in my apartment was looking its age. He was right.



*The man himself, Stuart Hancox.
Does a really super job.*

The house was painted and the bathroom job was handed over to Stuart at Revive Bathrooms. There's a long association here; the Clarion is 18 years old and Stuart at Revive has been in business for one year longer, advertising with us for most of that time. When I first featured him in an 'In Business' page I asked who would talk about his work on their home. Every single person was full of praise for this quiet, modest guy who just wouldn't (couldn't?) boast about his work. It was quite a revelation and who else could I choose?

He started in the building trade with Leigh Building in Bromsgrove, driving the van and learning the trade along the way. When the man who fitted bathrooms retired, Stuart was

taught that trade by Dean Hands, son of the company boss and when Stuart took over that part of the business his wife Tracy asked why he didn't simply go independent and work for himself. He probably wouldn't call that a Eureka moment, but it was.

I have talked to several of Stuart's customers and every single one sung his praises. Best known amongst them is Diane Waddington, who will only have him working in her house on bath and kitchen jobs. She's a lady with high standards and her enthusiasm for what a Revive Bathroom means sounded too good to miss. It took a long time to find a slot in his programme, but it began with a chat about style and colours, with him showing a wide range and recommending what he'd fitted and knew to be good. I wasn't asking for cut prices, but Stuart would show what he felt was best value, good quality at realistic cost. Made sense to me

We chatted about standards. Too often Stuart will be asked to put right a job done - undone would be a better description - and what is really needed is a complete strip down and start again. Sights like tiles falling off the wall and chipboard instead of marine ply for a floor base are just a couple of examples. He gets angry for the customer, who has paid for a bodge and then faces paying again for a proper job. Not very economical.

For my job, he spent a lot of time discussing options and bringing samples to examine before selecting. My lady love had her say in the matter, she having very good colour sight.

When the job started it was a matter of me sleeping and eating at her place, with Stuart left to the centre of activity and me working in the space I call my office. I made the coffee and kept out of the way, with work on the Clarion and an American bike magazine. Stuart was there on time every day when he didn't have to collect parts or go home to pick up a special parcel with parts for what I called my job.



The small bathroom, about ten feet by seven was transformed from a slightly tired old place to a stunning example with gleaming chrome, a gold colour floor and a gentle grey to walls and ceiling. The paint was Valspar, which I remember from long ago; with three coats applied it was far better than I ever managed when painting my pedal bike.

The result was more than I could have dreamed, even the door replaced and at last easy to close. I love it, it's worth every penny and I'm as proud as Punch.

Jim Reynolds



CONSERVATORY
INSULATION SOLUTIONS

Worcestershire based

Special offer:
Save 25%
+ 0% VAT

Is your conservatory too hot in the summer ?

Is your conservatory too cold in the winter ?

- Warmer in the winter
- Cooler in the summer
- Normally fitted in just 1 day
- FREE in home quote
- Year round use of your conservatory
- VAT FREE GOVERNMENT APPROVED INSULATION

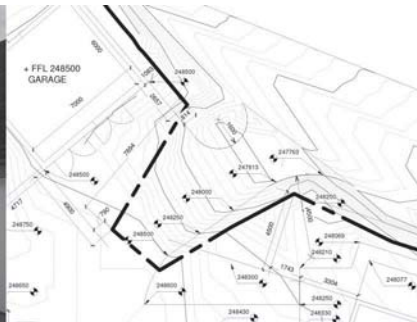


EXTRA 10% discount for

NHS / Current & Retired | Blue Light Card Holders | Saga Members

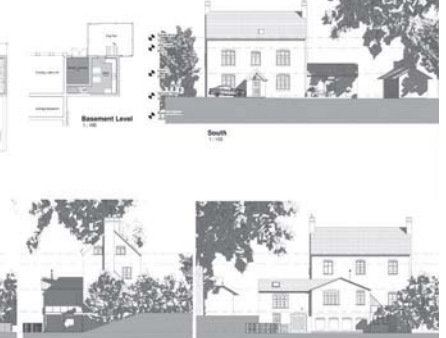
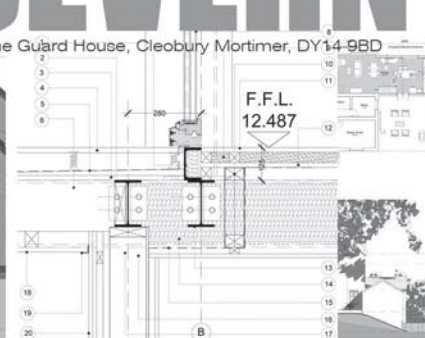
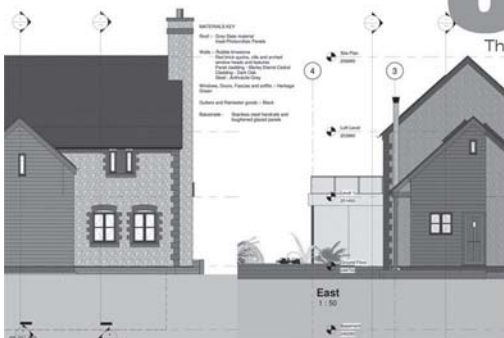
Freephone: 0345 5480078

www.conservatoryinsolutionsolutions.com



SEVERN
architects

The Guard House, Cleobury Mortimer, DY14 9BD



We are a friendly Shropshire based architectural practice with plenty of experience in all kinds of residential projects large and small. Using the latest 3D software package and technology we can turn your virtual dream home into a reality.

Contact us now on 07825 759484 or email
julie@severnarchitects.co.uk
for your consultation

- Our Architectural Design Services include
- Design & Feasibility Studies
 - General project Advice
 - 3D Modelling
 - 2D CAD Drawing
 - Planning Advice and Submissions
 - Building Regulation Applications
 - Tender & Construction Drawings
 - Contract & Project Management

RIBA

Chartered Practice

CLEOBURY W.I.

Members enjoyed a busy month since the last report with two outings as well as the monthly meeting. The weather was kind for our visit to the beautiful walled garden at Wildegoose Nursery in the Corvedale. Laura who owns the nursery and tearoom with her husband, Jack, gave us an informative talk on the history, environmental ethos and redevelopment of the garden, including the Georgian greenhouses. This was followed by a stroll around the unusual planting of flowering plants in amongst vegetables and fruits. Delicious tea and cake followed in the garden.

Stuart Walford joined WI members for their monthly meeting with a passionate and enthusiastic approach to medical emergencies which might be encountered in the house and countryside. He updated us with technology available on mobile phones and the procedures to expect when contacting the emergency services. During the meeting Sue Kershaw confirmed that she had delivered the knitted blankets crafted by WI members to the CM Tiny Tots group.

On July 16th we enjoyed an interesting tour of Three Ashes Dairy Farm at Cleedownton. We saw modern robotic techniques for milking dairy cows and met the new additions to the herd. Then it was on to Laura's Ice Cream Parlour at the Boyne Arms to taste the wonderful, varied selection of flavours produced using milk from their farm. Laura was a brilliant host

throughout and gave us a real insight on the intricacies of making ice cream.

Upcoming Activities
Coffee at the Brewe Clee Hill Coffee Shop on Thursday August 8th at 10.00am.

President's Summer Party on Tuesday August 13th. A most convivial evening, hopefully in the garden.

Please contact Judy on 01299 270983 or email judysant10@gmail.com for further information on joining our WI. Check out the Cleobury Mortimer WI Facebook page.

Sally Serrell-Cooke

WOOD WORDS

A busy time on the green with league fixtures and club competitions progressing including the Sunday League when stop press news records the first win of the season for Jason's Argonauts (21st July) maybe they will be able to put "flesh on the bone" in their remaining encounters!

Club Captain Graham Kitchen had a successful Captains Day on June the 30th. Winners of the event being Nick Flatters and Margaret Grainger (8-6). Nick features again with Dave Booton winning the Downes Cup (21-12), June 29th. He is also to be congratulated after topping the averages in the Cleobury team of the Ludlow League 2024.

We have seen a number of new members joining the club following the various taster sessions, including Claire Evans who took part in her first club competition recently, albeit losing finalist with Ray Link in the Jules Cup – well done Claire. All club news events and

fixtures are on club website cleoburybowls.org.uk.

Sadly, we finish with the news of the death of Phyliss Martin wife of longstanding member Jeff. Condolences to Jeff and family.

Smiffy. 07494 016137

BIRDLIFE

Our annual bird survey has now finished, and the results will be analysed in detail shortly. The survey has been carried out every year since 2012.

Coverage of Curlew has been pretty good, but apparently fewer pairs came back to the area. We found 7 – 8 pairs last year, but this year we found no evidence to suggest that that three of these pairs returned. Even eight pairs, the same as we have found in each of the previous three years, is a lot less than the 13 pairs when we started in 2012.

We have also been looking for breeding Lapwing, Kestrel, Cuckoo and Red Kite since late March. If you've seen or heard any of these species, please don't assume we know about them either.

Clee Hill is a county hotspot for Kestrel, and there are probably about nine nests in the area. Several of them are in nest boxes that we've put up, working with the Shropshire Ringing and Raptor Groups, who are studying the reasons for variable breeding success in different parts of the county.

If you've seen or heard a Curlew, please tell us. Contact Chris Bargman (01299 270514, email : chcw@shropscwgs.org.uk *Leo Smith*

KINLET C OF E PRIMARY SCHOOL

Love to Learn – Learn to Love



- Outdoor play areas
- Small family atmosphere
- Kind – Inspire – Nurturing – Learning – Eco-friendly -Teamwork

www.kinlet.shropshire.sch.uk

admin@kinlet.shropshire.sch.uk

Telephone: 01299 841210

KIDDERMINSTER

SELF STORAGE AND REMOVALS

STORAGE

Free insurance . Flexible Terms
Fixed Price Guarantee . No hidden costs

REMOVALS

Professional Removal Service
Est. over 25 years

PACKAGING MATERIALS

Boxes, Bubblewrap, Tape Etc. for sale
Free local deliveries on orders over £20

01562 744088

www.kidderminsterselfstorage.co.uk

Unit 11 Finepoint Way, Stourport Road, Kidderminster DY11 7FB
info@kidderminsterselfstorage.co.uk





EVERYTHING INTERIOR UPHOLSTERY

REUPHOLSTERY SERVICES:

- AUTOMOTIVE
- CARAVANS
- CAMPER VANS
- TRADITIONAL & MODERN
- COMMERCIAL & BESPOKE
- DOMESTIC
- CARPET & UPHOLSTERY CLEANING
(in partnership with WE GLEAM)

OVER 30 YEARS EXPERIENCE



CONTACT US TODAY

Unit 19 Old Station Business Park, Cleobury Mortimer, DY14 8SY

07961 712683 / 07961 792103

www.everythinginterior.co.uk

email: everythinginterior@outlook.com

Bespoke framing and mounting for:

- Artwork
- Photographs
- Canvases



The Framing Studio Cleobury Mortimer

Paul Serrell-Cooke
07791 378240

Bringing artwork and images to life



**LUDLOW
SALVAGE**
~ Est 2017 ~

Reclaimed Building Materials
and Architectural Antiques

Station yard, Station road,
Woofferton, Ludlow SY8 4AW



07805 312168



ludlowsalvage@gmail.com




/ludlowsalvage



/ludlowsalvage

WWW.LUDLOWSALVAGE.CO.UK


**LUDLOW
FIREWOOD**
~ Est 2019 ~

Suppliers of Premium Grade Ready
to Burn Firewood, Beautifully Crated
and Delivered to Your Door



07949 318014



ludlowfirewood@gmail.com



/ludlowfirewood



/ludlowfirewood

Station yard, Station road, Woofferton, Ludlow SY8 4AW

WWW.LUDLOWFIREWOOD.COM

Available in Barrow bags and
nets for all your access
requirements.

CLEOBURY SEAFOOD & FREEZER CENTRE

6, Newhouse Farm, Tenbury Road, Cleobury Mortimer DY14 8RD

For enquiries or to place an order, phone Ann 07711875553

Top most popular products

Fish Cod, Haddock, Kippers, Sea bass, Red Snapper, Tuna, Swordfish, Salmon & more

Seafood Calamari, Whitebait, Scallops, Raw King Prawns, Fish pie mix

Bennet Ice Cream

Curries and Mr Daves Curries

Dairy Cream Cakes Éclair Finger Donut, Scones, Apple Turnovers

Frozen Fruit

Blueberries, Blackberries, Blackcurrants, Summer Fruits, Raspberries & more

Hot Puddings Treacle, Sticky Toffee, Chocolate, Jam

Suet Puddings, Steak and Kidney and Steak and Ale



Gluten Free, Vegan, Dairy Free, Vegetarian

I have a new Website under construction, and will be ready very soon

Opening Times Closed Monday, Tuesday to Friday 9.30 to 4.30 Saturday 9.30 to 12.30

ONE STOP ROOFING

The Flat Roof Specialists

- Rubber, Fibreglass & Felt
- Re-pointing & Chimney Repairs
- Fascias & Guttering



Take advantage of our offer: Replace your flat roof Making EPDM (rubber) your choice for a long lasting, weatherproof & high slip resistant membrane, with a lifespan of 50 years, **get it for the same price as felt**, which only carries a 10 year guarantee!

Replace your flat roof with EPDM (rubber) & add a skylight or lantern, giving extra light to your room starting **from as little as £400!!**

Freephone 0800 0855277 * 07538 471274

Www.onestop-roofing.co.uk

onestoproofinguk@gmail.com

Family business est. 35 years.
All repair work undertaken

Proud members of
Checkatrade.com
Where reputation matters

Community Contacts for Clarion Readers

CEMETERY ADMINISTRATOR	Theresa Ray	07703 965 064	theresa.ray@cleobury.org.uk
CLEOBURY COUNTRY CENTRE		01299 272300	In Love Lane, 9 to 5 Mon to Fri.
CLEOBURY DENTAL PRACTICE		01299 271747	www.cleoburydental.co.uk
CLEOBURY CARERS	Michelle	01743 341995	carerssupport@shropshire.gov.uk
CLEOBURY COMPASSIONATE COMMUNITIES	Katja Jones	07966 080111	Tuesday and Thursday at the Medical Centre
CLEOBURY LIBRARY		01299 272301	Open 9 to 7 Mon, 9 to 5 Tues/Fri, 10 to 1 Sat.
LOCAL POLICE			
CLEOBURY MORTIMER SCOUTS	Lowri Hughes		cleoburybeavers@gmail.com
CRIMESTOPPERS	Free Police contact	0800 555 111	Talk in confidence, to report any crime.
DOMESTIC VIOLENCE HELPLINE		0800 783 1359	Women's Aid, 24 Hour support:
HOME FROM HOSPITAL	Age UK	01584 878046	Help over the first weeks back home
MARKET HALL	Sam	07385 698574	markethall@cleobury.org.uk
MEDICAL CENTRE		01299 270209	Out of surgery hours, use the Shrop Doc Service.
SHROPHIRE DOCTORS		111	Service available evenings and weekends
THE MEN'S SHED	Pete Blackburn	07776 243 584	petblack@me.com
THE PHARMACY		01299 270219	Closes for half day on Saturday. Delivers
ST ELIZABETH'S R.C CHURCH	Angela Flowers	01299 270318	Sunday Mass at 9.00am
NIGHTINGALE NURSING FUND	Rosemary Abbiss	01746 718451	
TOWN COUNCIL (Clerk)	Dorothy McBride	01299 271154	
St MARY'S YOUTH PROJECT	Mark Greaves	07828 116810	mark.stmarys@live.co.uk
SHROPSHIRE COUNCIL		0345 678 9000	
S. SHROPSHIRE YOUTH FORUM		01584 874922	
VOLUNTARY CAR SCHEME	Mandy Smith	01299 666119	
WASTE DISPOSAL		0345 678 9007	The contractor is Veolia
WATER SUPPLY EMERGENCIES	Severn Trent	0800 783 4444	
NEWLIFE CHURCH	Pastor E Stirrup	01562 630595	Sunday services at 10.30



Our Services



SOLAR PV



EV CHARGERS



**AIR SOURCE
HEAT PUMPS**



**GROUND SOURCE
HEAT PUMPS**



BATTERIES



VENTILATION



**UNDERFLOOR
HEATING**



RADIATORS

About us

EnergyZone is one of the largest renewable energy companies in the Midlands, having provided domestic and commercial sustainable energy solutions for over 20 years.

Based next to Hobsons Brewery in Cleobury Mortimer, we are your local experts in renewable and low carbon energy.

The current energy crisis has been incredibly eye-opening as we come to realise how reliant we are on other countries for fuel. Wouldn't it be nice to become more independent and less reliant on the volatile energy prices... well, that's where we can help!

What can EnergyZone Offer?

- With over 130 years combined experience, we are keen to help with all your energy enquiries and deliver impartial advice.
- Totally free desktop quotes for Solar PV and Heat Pump systems completely unique to your property to show you exactly how much you could save.
- Self-consumption gadgets to help you utilise all of your generated energy. Whether its a Smart Electric Car Charger, Immersion Diverters or Battery Storage Units, we can help you become more independent from the grid.
- Ensure your heating is as efficient as possible, through underfloor heating installation, radiator upgrades and smart hot water cylinders.
- Advice on all Government Grants and Incentives.
- Local support with annual servicing through our in-house EZCare package.

Get in touch today to start renewing your energy!

For your peace of mind, EnergyZone has the following accreditations:



01299 270011



sales@energyzone.co.uk



Ludlow Motors

Vauxhall

The **New Corsa** is available with a petrol or fully electric engine. A next-generation 51kWh battery with all-electric range of up to 246 miles.



The **Astra** 100% Electric. 114kW Electric motor (158PS) with 54kWh battery. 258 miles of Electric range. 0 grams of CO2 emissions.

Mokka Electric is powered by a next generation 50kWh lithium-ion battery. It'll take you up to 209 miles (preliminary WLTP)1 on a single charge.



Suzuki

Enjoy the power of an 83 HP engine, with a CO2 output as low as 106 g/km (WLTP combined). When you choose a **Swift** with mild hybrid, a little goes a long way.



Designed for all conditions, and we don't just mean the weather. From school runs to weekend getaways, the **Vitara** takes you anywhere you want (or need) to go.

Our latest **S-Cross** comes with the choice of either Mild Hybrid or Full Hybrid technology, supported by a dynamic and responsive petrol engine.



Service

Routine servicing is an important part of keeping your vehicle at its best condition, delivering a top driving experience. Drive confidently knowing your vehicle is working at its best with us.



We service all popular makes & models.

All Makes & Models Serviced from £199. Fully Electric Servicing From £99.

Spread the cost with a Service Plan from £17.99 per month.

Motability Scheme

Nothing should stop you living a full life, with independence and freedom. The Motability Scheme opens the doors to those things, with worry free motoring that helps you to keep moving.



Motability from Worcester Car Sales - 400523 means:

The everyday freedom of having everything included.



Your insurance, servicing, maintenance and full breakdown cover included.

The Cleobury Clarion Social Calendar for August

Thu. 1st. 5.00pm. Rock Pathfinders Evening Walk from Kinver.	PAGE 11
Sat. 3rd. 1.00 Big Butterfly Count at Wheathill Wildlife Site.	PAGE 9
2.00. Beacon on the Hill meeting at Clee Hill Village Hall.	PAGE 5
Sun. 4th. 10.00. CMFA country walk starts at the Parish Church.	PAGE 17
Tue. 6th. 2.00. Carer Support Group, Community Centre, St. Mary's Place, Love Lane	
Wed. 7th. GENERAL WASTE BINS EMPTIED TODAY	
6.00. Late Night at the Food Bank in the Market Hall.	
7.00. Whist Drive at Doddington village hall.	
Thu. 8th. 10.00 Cleobury W.I. meet at Brewe Clee Hill Coffee Shop.	PAGE 47
Fri. 9th. 10.30 Coffee Morning at Doddington Lodge, up on Clee Hill	PAGE 32
The Lamp Restaurant hosts 'Elvis the King' night. £25 for a meal plus the man.	
Tue. 13th. 7.30 The Breakfast Club gather at the Golf Club to sip coffee and dine.	PAGE 11
Cleobury W.I. President's Summer Party.	PAGE 4
Wed. 14th. GARDEN AND FOOD WASTE BINS EMPTIED TODAY	
10.00 Walking for Health start from Station Road car park, Highley.	
10.00 CoCo Coffee Morning at the Market Hall, Church Street.	
7.00. Royal British Legion meet at the Sports and Social Club.	PAGE 13
Thu. 15th. 10.00. Rock Pathfinders walk out from Tardebigge.	PAGE 27
10.00. Family Fun Day for the children at Sparc Theatre, Bishops Castle	PAGE 27
Fri. 16th 8.00. Bingo Night at Doddington village hall.	
Sat. 17th. 9.00. Cleobury Country Farmers' Market in the Parish. Church.	
10.00 Jumble Sale, St. Elizabeth's church, Lower Street.	PAGE 9
7.30 Flicks in the Sticks at the Parish Hall. Features "Scrapper".	PAGE 27
Mon. 19th. 7.30 The Reading Group meet at the library in Love Lane.	PAGE 27
Wed. 21st. GENERAL WASTE BINS EMPTIED TODAY	
7.30. Whist Drive at Doddington village hall.	
Fri. 23rd. 6.30. Barn Dance in the Parish Hall. £15 tickets include two-course meal.	PAGE 5
Mon. 26th. 7.30 The Nearly Dear Poets' Society meet in the town library.	PAGE 7
Wed. 28th. GARDEN AND FOOD WASTE BINS EMPTIED TODAY	
10.00. Walking for Health step out from the Market Hall.	
10.00. CoCo Coffee Morning at the Market Hall. Lovely cake!	
6.00 Clows Top Gardening Club meet for a visit to RydD Gardens	PAGE 9
7.30 Swing from Paris perform at Clows Top Victory Hall	PSGE 5
Fri. 30th 8.00 Bingo Night at Doddington village hall.	

LOOKING FORWARD TO SEPTEMBER...

Wed. 4th. GENERAL WASTE BINS EMPTIED TODAY.
7.30 Whist Drive at Doddington village hall.

REGULAR EVENTS OF INTEREST:

Monday: 8.00 Bingo Night at the Market Hall.
Tuesday: 2.00 Friendship Club meet at the Parish Hall.
Thursday: 10.00. Drop-in at Saint Mary's Church to chat.



Charity No 205210



FAR FOREST COUNTRYSIDE SHOW

Saturday 10th - Sunday 11th August 2024

Advance Tickets: Adults £8 Seniors £6 Children £4 Family(2+2) £16

At Pay Booths: Adults £10 Seniors £8 Children £5 Family (2+2) £20

Weekend Wristbands Available

Advance Tickets and Wristbands Available on the Website

Saturday Opens 10AM Live Music until 10.30PM

Sunday Opens 10AM Closes 5PM

A FUN DAY OUT FOR ALL THE FAMILY

Showground, Tenbury Road (A456), Callow Hill,
Rock, Nr. Kidderminster, DY14 9DA

Tel: 07773 905 680 or Email: admin@farforestshow.co.uk

www.farforestshow.co.uk

DEADLINE FOR THE SEPTEMBER CLARION : AUGUST 22nd
Editor and Advertising Sales: Jim Reynolds, 4 Childe Road, Cleobury
Mortimer, Shropshire, DY 14 8PA
Tel: 01299 270642 Mobile: 07410 977 212 E:editor@cleoburyclarion.co.uk
Web: www.cleoburyclarion.co.uk
Printed by Badger Print. Tel: 01952 730511

Collect your Clarion in Cleobury from: Londis, Cleobury Cafe, Severn
Hospice Shop, Mid Counties Co-op, Purslows, The Library.

And out in the county:

The Blount Arms, Heath Farm Meats, Clee Hill Stores, Clows Top Store, The
Colliers Cafe, Sun & Slipper, Mamble; Hopton Bank Service Station; Ludlow
Library; Fighting Cocks, Stottesdon; Duck Inn, Chorley; Live & Let Live,
Neen Sollars; Eagle & Serpent, Kinlet; Parker Motors, Kinlet.

Also from the parish churches in: Cleobury Mortimer, Bayton, Doddington,
Hopton Wafers, Neen Savage, Neen Sollars and Stottesdon.

Paul Harding



Tree Services

- Tree surgery and felling
 - Woodland thinning & maintenance
 - Hedge trimming & grass cutting
 - Supplier of hardwood logs, kindling and garden bark
- NPTC certified fully insured. Domestic and commercial work undertaken.
Tel 01584 890 993 Mob 07970 878 224

BILL'S QUALITY METALWORK
5 GREENFIELD ROAD, CRAVEN ARMS, SY7 9QU
Manufacturing Made to Measure Gates and Railings
~Balconies and Staircases, Handrails, Carports,
Structural Steelwork and Mobile Welding Service.
Phone Bill on 07973 248 016 or 01588 673 914
Office for a free quote

How to contact the Town Council

Telephone: 01299 271154 or 07483 112290

Email: council@cleobury.org.uk

Speak to us at the Councillor Surgeries held on the third Saturday of every month in the Market Hall.

Councillor Surgery

Cllr James, Cllr Burns and the Clerk attended the monthly Councillor Surgery held in the Market Hall, alongside the Farmers Market, on Saturday 20th July. If you have an issue you want to raise, you can contact the office on the details above or drop into the next monthly Councillor Surgery on Saturday 17th August 2024.

Criminal Damage in the QE11 Park

We are very sad to report, that over the weekend of July 13th and 14th and at the beginning of the following week, several trees were damaged and others were cut down in the Bike Trail area of the QE11 Park to make a den. The Park is there for the community to use, however damage and destruction of trees is not something we expect to see. We have incurred additional costs to make the area safe again due to this criminal damage. The Town Council is always looking at ways it can help improve our amenities and open spaces. We have a few ideas in the pipeline and if anyone has any thoughts on what they would like to see in Cleobury Mortimer please get in touch with the office.

Cemetery Management

Many of you will be aware that the Town Council is responsible for the general management of the Cemetery. The individual graves however, are the responsibility of the grave owner/family and as such the family should keep these graves safe and tidy. This includes trimming the grass on the grave and ensuring any headstone is safe. We ensure independent inspections of all memorial headstones are carried out and try to contact the relevant families if any safety work is required. We understand that some people either forget that there is a responsibility to look after the graves, are unable to physically tend the graves or remaining family have moved away. We are very keen for the Cemetery to look well-maintained but this is a community facility and is not just the responsibility of the Town Council. We are endeavouring to tidy the unkempt graves ourselves but would appreciate any offers of help through a volunteer working party to assist with this task. If you are able to help, please contact the Council office to express your interest.

Councillor Vacancy

The Town Council currently has a vacancy for a Councillor. If you have good local knowledge and are interested in our community, have good communication skills, are keen to work with community partners and can attend monthly Town Council meetings then please consider joining us. For more information, please contact us on the details above.

Grants available to community groups

The Town Council has some funding available to support local community groups based in Cleobury Mortimer. Grants are available for activities or for equipment. If you have a project or activity which would benefit from some financial support, please contact the Town Council for further information and an application form.

Dates for your Diary

Next Council Meeting – Monday 5th August 2024 at 6.30pm, at the Cleobury Country Centre.

Councillor Surgery – Saturday 17th August 2024, from 10am – 12noon, at the Market Hall.



CLEOBURY COMMUNITY HUB

Coffee Shop, Climb61, Youth Events

Mondays - 9:30am--8pm

Tuesdays - 9:30am--8pm

Fridays - 9:30am-5:30pm

Barista coffee, Paninis, cakes and milkshakes

FOCUS ON: THE FUTURE

In 2018 with the help of an amazing group of young people, we created the Cleobury Community Hub for the whole community when the Methodist Church that had supported our youth work for many years, closed the church for regular worship. In September 2019, the lease was signed and some of the work was done. We viewed this 5 year lease as Phase 1, a concept proving exercise for Phase 2, a purpose built facility. We never envisaged buying the building in the hope to develop it and create a diverse space for all ages and abilities, but that has become the vision as we have journeyed with the community.

With the help of individual donors, small grants and fundraising we managed to secure half of the money needed to purchase the site. We applied to The National Lottery's Reaching Communities Fund, who saw how valuable the CCH is to our community. They visited and acknowledged the incredible work our volunteers do and how everyone that crosses the threshold feels welcomed and valued.

It is the generosity of those who believe in what goes on at the Cleobury Community Hub that makes it what is is.

We want to publicly thank The National Lottery for their support in match funding so we can purchase the Cleobury Community Hub, securing its future and enabling us to take it to the next level.

Their support will help us reach Phase 3, developing the site for our all ages and abilities within our community and beyond to enjoy for the future! The plans are exciting, pop in and have a look or check out our social media for regular updates.

The plans include: 7m high roped climbing wall, accessible climbing for people with disabilities, dance studio, coffee shop and kitchen, more seating, extra rooms and a Changing Places (bathroom with a hoist, changing table and shower).

On 24th August, a team of 4 will be cycling from London to Paris over 3 days to raise money and awareness of the Cleobury Community Hub's development. If you would like to sponsor Nick, Jan, Andy and Mark then please follow the social media posts with links to the fundraising pages or donate in the Hub, thank you!



Cleobury Community Hub



@cleoburycommunityhub



eme **CLEOBURY**

FACILITIES INCLUDE:

Gym 
 Exercise Classes 
 Sports Hall 
 Outside Astro Pitch 
 Netball 
 Tennis Courts 

CLASS TIMETABLE

MON	9.15 - 10am	CARDIO PILATES & STRENGTH
	6.30 - 7.15pm	BODY PUMP
TUES	9.15 - 10am	YOGA
	10.15 - 11am	YOGA
	6.15 - 7pm	TRX
WED	5.15 - 6pm	PILATES
	6 - 6.45pm	CIRCUITS
THU	6 - 6.45pm	STEP & SCULPT
	7 - 7.45pm	SPIN
FRI	6 - 6.45pm	STRETCH & RELAX

Pre-Booking required for Exercise classes
Book online or at the Centre

OPENING TIMES

MON	7.30am - 10am
	10am-12.30pm GP Referral
	3.30pm - 10pm
TUE	3.30pm - 10pm
WED	7.30am - 10am
	4.30pm - 10pm
THU	4.30pm - 10pm
FRI	7.30am - 10am
	3.30pm - 10pm
SAT-SUN	7.30am - 1pm

Pre booking not required for Gym use.
Induction or Disclaimer required
in advance of use.



TEME CLEOBURY
 LOVE LANE
 CLEOBURY MORTIMER
 DY14 8PE
 ☎ 01299 271317




DOWNLOAD OUR APP



www.teme-leisure.co.uk