

The Cleobury Clarion

SERVING CLEOBURY COUNTRY

JULY 2014

SEVERN SEWING TAKES OFF



Brian Manning with Gayna Woodland (left) and Catherine Evans of Severn Hospice.

The Severn Hospice Craft Club reached new heights in June. They were asked to make storage covers for Brian Manning's two-seater Durine aircraft that flies out of Milson airstrip. And Brian was so pleased with the job they did that he offered the ladies a free flight.

Not exactly adventurous, the ladies volunteered the place for District Manager Lynne Preece, then stood and applauded as the boss flew off into the wide blue yonder.

Read the full story inside on Page 17.

CLEOBURY'S NEW MEDICAL CENTRE

It's open and operating. The profile of the new Medical Centre as you drive up the Ludlow Road is very impressive, adding dignity to that particular landscape. Information has been very hard to come by, as the staff have had a huge job on, moving records, equipment and furniture from one end of town to the other.

Credit must go to the staff at the Pharmacy too. They worked until 9.00 every night of the week and the final weekend before opening on June 16th. The amount of space in the new building seems huge at this early stage, before the place fills up, and walking into reception with not one chair occupied was a very spooky spacy feeling.

All credit to the builders who dealt with floods to get the place finished very close to deadline and to hand it over looking so good. Lots of parking space, landscaped surroundings and clear road makings for parking.



Having the Centre and the Pharmacy together makes good sense and you can walk straight from one to the other. It's the sort of facility the medical requirements of this growing, aspirational town needs and deserves. The services available without the inconvenience of a journey to some distant place will grow, another plus to add to the list.

To everyone who had the vision to see this need and the sheer determination to see it through, our grateful thanks. Another good thing for our children and their future.

*on the
menu*

**New Local Home Delivery Service
Call Ann or Lynn on 01299 271 755**

Hand prepared healthy options include
• Low Fat • Gluten Free • Low Salt • Low Sugar

Ask for full menu and prices
www.onthemenuefood.com

**Smaller
Meals For
One**



**Free
Dessert
with First Order**

Tasty Main Courses from £2.79 and Desserts



Farlow Estates

Ludlow Branch. 5 High Street, t. 01584 876333

Cleobury Mortimer Branch. 36 High Street, t. 01299 271477

Kidderminster Branch. 71 Coventry Street, t. 01562 745082

enquiries@farlowestates.com www.farlowestates.com



56 Doddington Heights £79,995

Park Home, two bedrooms, Garden, Drive, Edge of site, Far reaching views.



9 Cleobury Meadows £239,995

Detached House, Beautifully presented, Four bedrooms, Garage and parking, Walled garden, Energy rating B



Granary Loft £134,995

Mews apartment, Roof terrace, Shared courtyard garden, Two bedrooms, Close to amenities, Energy rating C



The Glebe Barn £189,995

Open plan living room, Dining Area, 2 Bedroom, Open garden to front, Garden to rear/Parking, EPC to follow



Brooklands £395,000

Detached bungalow, Three bedrooms, Double garage, Gardens, Large driveway, Energy rating D



The Old Wheel House £134,995

Character Town Property, In the heart of town, 2 bedrooms, Formally used as offices, Beams, Energy rating F



The Cleobury Clarion. July 2014



*This man sold his car and now cycles to work.
Matthew Hayes is on Page 11.*



*John Felix can administer the cane without pain.
Learn how on Page 19.*



*Zoe Day moved to a smaller nursery where caring matters.
Read more on Page 55.*

And On Other Pages....

- | | |
|------------------------------------|----------------------------------|
| 5: CoCo Mystery Donor | 33: Clarion Coppers |
| 7: The Remarkable Emily Price | 37: Farming - Rachel Robinson |
| 9: Rock's Bounds Well Pounded | 39: Crime Reduction Action |
| 13: The Shropshire Cycle Festival. | 41: The Medical Centre |
| 15: The Clarion Jobs Page | 43: Someone's Wonderful Railway |
| 17: The Severn Hospice Take-off | 45: The Weekly Social Calendar |
| 21: The Severn Edge Vets Pets Page | 47: July in the Wyre Forest |
| 23: Happenings on High Street | 49: Stottesdon Open Gardens |
| 25: The Kite Festival is Back | 51: All About Books |
| 27: Philip Dunne MP | 53: Art Interest at Lacon Childe |
| 28: Monthly Calendar Part One | 57: An Alarming Story |
| 29: ...And Part Two | 59: Local Information |

The Clarion on the Web: www.cleoburyclarion.co.uk



The Female Fixers

Female decorating & odd job team. We pride ourselves on attention to detail and quality work: first-class painting & decorating, flat-pack assembly and all those jobs you never got round to. Reliable, friendly & punctual - what are you waiting for? Competitive rates & free quotes? We do those as well!

Call Lindsay on 07973 915024

FABULOUS HAIR
FOR
FABULOUS PEOPLE
BY
FABULOUS STYLISTS

- PPD FREE
- ORGANIC
- PARABEN FREE
- AMMONIA FREE
- SODIUM LAURETH SULPHATE FREE
- HAIR LOSS/THINNING CLINIC

BEAUTY ROOM

EMINENCE FACIALS/PEELS
SHELLAC MANI-PEDIS
HONEY I SHRUNK INCH LOSS
WRAPS
EMINENCE MASSAGE/WRAPS
O.P.I MANI-PEDIS
WAXING & THREADING
LDN SPRAY TANS
MAKE-OVERS
WEDDING HAIR AND BEAUTY

Agricultural Team
Legal specialists in all things rural

- Planning, Land Registration and Development
- Buying and Selling Farms and Rural Property
- Sporting and Fishing Rights
- Restrictive Covenants
- Farming Dispute Resolution
- Business Diversification
- Tenancy Agreements
- Tax Matters for the Farming Community



www.painters-solicitors.co.uk

*Serving the Wyre Forest
for over 60 Years*

For more information contact:

Nicholas Hughes on 01562 822295 or Wendy Beaumont on 01299 822033

Clarion Clippings - The Local News

IN PRAISE OF.....

Community Spirit. Sue Pearce was busy serving in Carrot Tops when neighbour David Jones said there was delivery man on her front doorstep. She couldn't leave the shop, but Steve Todd was there and quickly grasped the situation. He'd borrow Sue's keys, open the door for the delivery and solve the problem.

A few minutes later he was back to hand Sue her keys. As she said: "That's why I like living here. Where else could you do that?"

ROYAL BRITISH LEGION NEWS

On June 2nd several members of the branch, with the standard, attended the dedication of the Pensax and Stockton War Memorial. Despite light showers, this unusual ceremony was attended by about 300 people, who heard addresses by the Lord Lieutenant of Worcestershire, the Bishop of Worcester, and David Blakeway Smith.

In August the Cleobury branch will be marking the centenary of the start of the Great War with a parade and church service at 3.00pm on Sunday August 3rd, and the publication of a booklet containing details of the lives of all the Great War casualties named on Cleobury Mortimer's war memorial.

The branch always welcomes new members; ring 01299 270110 for a membership form. Sometimes prospective members are put off by the fact they have not served in the Armed Services, or by the fear of

being obliged to march. Don't worry, neither marching nor military service is necessary. All are welcome! *Mark Baldwin*

A COCO MYSTERY

In May a mystery person donated £212 in cash with a note attached which reads 'CoCo Fund. To support the work you do. Well done.' We are delighted with the very generous donation and would like to thank them in person, but it was donated anonymously. A big thank you to them, and the money will indeed help us to continue with the work we do. We have now taken over £400 with our continuing Diminishing Tea Parties, and raised almost £65 at our most recent Coffee Morning. All are welcome to these Coffee Mornings held on the second and fourth Wednesday of each month.

We would like to thank everyone who has supported us in so many different ways, not least of all for voting online on the Engage Mutual website in our bid to win a £4000 grant. If you would like more information about CoCo, please contact Katja Jones: (Market Hall Office 01299-270018. Mobile: 07966-080-111. E-mail: cleoburycoco@hotmail.com)

JUST A REMINDER

The Knowle Sports Club Sales now happen on the first Saturday of every month, from 8.00am. This month's is on the

5th, at the Knowle sports ground; wonderful bargains!

KIX IN THE STICKS

This is local youth at its best, involved and working for a good cause. Their story:

Teenage Kix @ the Hole in the Wall is a FREE youth music festival based at Hopton court, as part of the programme for the Hole in the Wall Festival. This year will see bands from Lacon Childe, Bewdley High School and William Brookes School perform. Pupils from these schools have also helped to organise the event, as part of the 'Young Event Managers Programme'. We have met regularly to help plan the event, brainstorming ideas, launching a Facebook and Twitter page, creating a professional logo and poster, and writing this press release. We went on a team building day to the Old Vicarage Adventure Centre where we took part in a Laser Tag session. Charlie Elcock and Gavin Bache have assisted us in planning what musical equipment we will need for the day, giving up their time to meet with us. Max Burke, a graphics student from the University of Plymouth has helped us create the new logo and poster.

We want to get a big audience for the event. It is totally free of charge, just turn up to Hopton Court on July 19th (the middle day of the Hole in the Wall Festival), from 11:00am to 3:30pm. We have some exciting, talented, young musicians lined up for the event. We would really appreciate your support!

The Clarion is on the web from the 4th of the month.

www.cleoburyclarion.co.uk

Good Food and Fine Fayre

Ashley's Bakery

Supplying fresh bread, daily,
from Ashley's Bakery in Cleobury to our shops at:

Cleobury Cafe Bakery Dept. 01299 271 517

Teme St, Tenbury Wells 07772 743570

Load St, Bewdley 01299 404147

Also available.....

Bakery Direct to the Trade

Outside Catering available

For more details

Call 01299 271 283

High Street,

Cleobury Mortimer

(Est. 1988)

Cleobury Cafe

Breakfast, lunch and afternoon tea

available 7 days a week

A hot & cold takeaway service

And the bakery Dept.

Selling Ashley's bread & cakes

Grab lunch on the run and

pre-order on...01299 271 517

High Street

Cleobury Mortimer

Mon—Sat 7am—5pm

Sun 8.30am—4.00pm

Clarion Clippings - The Local News

DEMENTIA CAFE'S NEW HOME

The Alzheimer's Society runs a monthly Dementia Cafe in Ludlow, for sufferers and their carers. It's a place to meet and talk, hear speakers on a range of subjects and find the simple comfort of support.

It has a new location, and you'll find it at the Ludlow Mascall Centre on Lower Galdeford, on the first Wednesday morning of the month, from 10.30 through to 12.30. For more information on the Society's work, talk to Christine Lloyd-Knight on 01694 722077 or chrstine.lloyd-knight@alzheimers.org.uk

CLOWS TOP GARDENING CLUB

The garden should now be looking its best. Borders full of colour and scent such as roses and sweet peas fill the air and the vegetable garden producing fine crops. Long summer evenings can be enjoyed to the full, relaxing and entertaining friends.

At our May meeting Vivienne McGee gave a talk on 'Hardy Plant Society'. The society is run by volunteers and encourages interest in growing hardy herbaceous perennials. It has

thousands of members both UK and overseas, and ensures that all garden-worthy perennial plants remain in cultivation. Members can take part in the annual seed distribution scheme by donating or requesting perennial seed. A great success with everyone enjoying the talk.

Many thanks to all who helped or attended our Plant & Coffee Morning. The money from this fundraiser goes towards the expenses/prize money needed for the annual summer show in August.

Our next meeting is on July 23rd, when Dr Murray Mylechreest will give a talk entitled 'Tales From Garden Labels'.

THE LACON LOTTERY

Winner of the June draw was Paul Lloyd, who took home £64.50 for his £10.00 investment.

MACMILLAN COFFEE MORNING

There's another of those very productive Macmillan Cancer Care coffee mornings coming very soon. Saturday July 5th, in the Market Hall, starting at 10.00 and running through until 12.00 noon. All proceeds to the vital Macmillan Cancer Care work, as usual, to further the care of those who are suffering and need a little extra help.



THANKS TO A LOCAL HERO


Carole Evans had a frightening experience on May 29th, when she was walking Alfie, her King Charles spaniel. Alfie was attacked by a dog wandering loose and Carole was knocked over in her struggle to rescue Alfie before Andy Wakeman came to her rescue and wrestled the dog to the ground. Carole writes:

"My husband and I would like to thank the people of Cleobury Mortimer for their concern for Alfie's health, and my own, after the dog attack which happened on May 29th. Also we would like to thank Andy Wakeman for his help during the assault."

REMARKABLE EMILY

14 year old Emily Price carries on her winning ways at golf. She's just won the Midlands Schools Championship, based at Arscott in Shrewsbury, where she was the youngest competitor. This victory means she'll be playing in the National Championship later this year. And the Midlands Championship is coming to Cleobury's own club in 2015, thanks to its good reputation. If you want an early tip for that contest, watch Emily!





**NATIONAL LOTTERY
NOW AVAILABLE AT
SPAR
CLEOBURY MORTIMER!**

**OPEN: [7am-9pm MON-SAT](#)
[8am-8pm SUNDAY](#)**

General store, off licence, newspapers mags, gas,
electric top-ups, Health lottery, Bill payments.

Telephone: [01299 270236](tel:01299270236)

Good Food and Fine Fayre



BAGGINSWOOD

Bagginswood, Cleobury Mortimer,
Nr. Kidderminster, Wores. DY14 8NB

Telephone: 01746 718732

HEATH FARM MEATS

Home produced beef, pork, lamb and mutton.
Home cured bacon, gammon, sausages, cakes,
pickles and preserves.

8.00am to 5.30pm

01746 718732

THE FIGHTING COCKS

No 1 High Street, Stottesdon, DY14 8TZ. Telephone 01746 718270

Telford & East Shropshire CAMRA
'Rural Pub of the Year 2013'.

Excellent Food from Local Produce
Real Ales including Hobsons

SHOP AT THE COCK

Local produce. Meat, cheese, bread,
fruit, vegetables, butters, smoked
salmon. tinned food and more.

Friendly, compact, full of surprises.

MUSICAL SATURDAYS TO COME:

MONTHLY SUNDAY OPEN MIC:
JULY 6Th.

6.00 start. All local talent welcome

Mawley Oak Travel 2014 Coach Breaks

Turkey & Tinsel Break Isle of Wight

5 Day Break

3rd of November-7th November

£249 Per person

Turkey & Tinsel Break Eastbourne

4 Day Break

5th December- 8th December

£169 Per Person



Want more information? Give one of us a call on 01299 270207 for free information on your perfect Break away.

Visit our website www.mawleyoaktravel.co.uk

Your Local Garage for Servicing and Repairs

MOT'S TYRES, SERVICING & REPAIRS

Fuel Sales, Red Diesel, Gas Cylinders, Forecourt Shop, Mots, Repairs & Servicing, Exhausts, Special Offers on Tyres, Clutches, Shock Absorbers, Cam Belts, Diagnostics. We offer a local collection & delivery service. Courtesy car available *

(* conditions apply)

www.mawleyoakgaragesltd.co.uk

Clarion Clippings - The Local News

ROCK'S MIGHTY POUNDING OF THE BOUNDS

It was clear something was going on in Rock on May 4th. About 300 cars bringing in many of the 596 walkers from all over the country, 38 percent up on last year. Publicity helped put Rock firmly on the map for long distance walkers, nature lovers and Midland Air Ambulance.

Weather perfect again, cool yet sunny with clear views over the Rock Parish countryside at its spring-time best. Dry underfoot; hardly any muddy patches. Rock W.I. laid on a wonderful spread, ladies working long shifts serving hungry walkers.

Midlands Air Ambulance turned out in full force, including manning the helicopter pod outside the hall and assisting with the registration. The Pound has become the major walking event for the Midland Air Ambulance.

The Pound team had put up 35 miles of way-markers, directing walkers along 25, 18, 12, 9, 6 and 3 miles routes. They clocked up 6164 miles between them.

We are grateful to all volunteers working so hard, the land-owners for their co-operation, the WI for running the cafe, commercial sponsors

and of course all walkers, for taking part. And Matthew Nott, of Bullockhurst Farm, Rock who took on wearing the Air Ambulance rescue bear costume, adding to the atmosphere of the day. Thank you, Matthew!

From being the main fund-raising event for Rock Village Hall, all the Pound revenues now go to Midland Air Ambulance. Commercial sponsors pay for expenses, which means all registration fees directly benefit Midlands Air Ambulance. The net revenue this year is £4176.97, before Gift Aid and individual walkers' sponsorships.

Next year on Sunday May 3rd, we'll be aiming for more.

Henk Buzink

STOTTESDON W.I.

A delightful evening on the wonders of Aromatherapy was presented by local nurse Juliette Best, who formulates her products as part of a complementary approach to cancer and mental health treatments. Juliette also loves to present her Blue Hills Aromatics skin care range to voluntary groups and we all warmed to her enthusiasm for her subject.

Food never far from our thoughts, May also saw us visiting the Monkland Cheese

factory for a talk on The Pleck's eighteen years perfecting recipes, from local ingredients, through daily production and months of maturing. Appetites were whetted for a Ploughman's Lunch: home made bread and chutneys accompanying chunks of Little Hereford and Monkland. Rain kept us from the garden patio, but the cafe was warm and inviting. On July 16th we meet in Chorley Village Hall at 7.30, when Carolyn Mace will teach us the art of 'Dorset Buttons'. Numbers are needed for individual kits, so please contact one of us - you are very welcome. Myself on 01746 718151 or Steff Bryan on 718018.
Marian Wootton

CLEOBURY GOLF CLUB IN THE NEWS AGAIN

Graham Pain of Cleobury Golf Club was voted second best Director of the Year in the Family Business sector at the recent Institute of Directors Midland Region awards ceremony. The winner was Helen Thomas of Weston's Cider and the results were announced over a champagne breakfast at Edgbaston Cricket Ground. Congratulations to Graham.

Newbridge Computer Services Tel: 01299 270701

- ★ Want a new computer?
- ★ How to set it up?
- ★ Worried about what you need?
- ★ How to transfer your data?

Well help is at hand!

We offer a complete service package with all our new computers to ensure you get exactly the right system, at the right price and completely hassle free from start to finish.

Buying a computer system from us couldn't be easier!

Also:

Spares & Repairs
Internet Connection
Security: Anti-virus etc.

E-mail mike@ncs-tech.co.uk

Suppliers of  Computers

And:

Call out & onsite Repairs
Accessories
Wired & Wireless Networks

website: www.ncs-tech.co.uk

**High Street Cleobury Mortimer
DY14 8DX
TELEPHONE: 01299 271798**

*Bowkett's
food
Emporium*

**Open:~
Mon to Fri 8.30am - 5pm
& Sat 8.30am - 2.30pm**

Quality locally sourced meats and poultry cut and prepared
by Lewis & Brett our skilled butchers

Bowkett's Gold Award Winning Traditional Pork Sausage - Cooked meats and British & continental cheeses -
Award Winning Speciality Sausages and Bacon, Bowkett's home-made Faggots, Lasagne, Cottage Pies,
Sausage Rolls, Pork Pies, Scotch Eggs & Quiches

Sandwiches & baguettes while you wait or made to order (ring your order through)

Hot tasty chickens, sausage rolls and pasties

Delicious tasty baguettes and rolls baked on the premises and much more.....

NEW Coffee to Go - Made from bean to cup ~ treat yourself to a splash of vanilla or hazelnut syrup



Mawley Milk direct from the cows to a shop near you!

We guarantee you won't find tastier fresher milk with so little food miles.
Early morning doorstep delivery available in Cleobury Mortimer

Like us on Facebook/Mawleytownfarm

Produced & bottled at
Mawley Town Farm,
Cleobury Mortimer
01299 270359

To find your nearest stockist visit our website www.mawleytownfarm.co.uk
email: info@mawleytownfarm.co.uk

THE CRUSTY COB BAKERY, SANDWICH BAR AND TEAROOMS

Wide range of fresh bread supplied daily, including speciality items

Freshly made sandwiches to take away

Award winning pork pies from Reg. May

Large selection of cakes and confectionery

Telephone orders taken; Delivery service available; Outside catering

**Open from 8.00am to 5.00pm, Monday to Saturday
18 Church Street, Cleobury Mortimer Tel: 01299 271190**

simplyfresh

Tel: 01299 270 182
2/3 Talbot Yard,
Cleobury Mortimer, DY14 8BQ.

Opening hours:
Mon—Sat 7am—9pm
Sun 8am-8pm

**Local & Seasonal Produce,
Delicatessen Counter,
Organic & Gluten free ranges,
Greengrocery,
Off Licence, Newspapers,
Health Lottery,
General Convenience Store**

Clarion Clippings -- The Local News

NEW FACE AT LACON CHILDE SCHOOL



Matthew Hayes: "I've sold the car and cycle in to work."

Matthew Hayes has given up the conventional commuting habit. Having done it for 30 years on his way to work for the NHS, latterly to New Cross in Wolverhampton, he's opted for a better quality of life. He's now Business Manager at Lacon Childe, responsible for a budget above £2 million a year and making his way up a steep learning curve.

That all sounds idyllic but tough, so is this a long term measure? "Definitely. I took a downturn in pay to come here, but it was a life style choice to work in the community." His biggest task at the moment is preparation for the academy status the school has applied for

and the new systems that will come if that happens. As it surely must, with such a good academic record.

He has been pleasantly surprised by the spirit of co-operation from other schools who've been through the academy application process. His job is to take the pressure off head teacher Darren Reynolds by handling a wide range of management tasks from budgets and human relations to building maintenance. And is it very different from management in the NHS? "I'm much closer to the rock face than before," he admits. "And I know I have lots to learn."

And there aren't many places in Shropshire better than Lacon Childe if you want to learn.

WHY SO SELFISH?



The photo of a removal van at the bottom of the previous column was taken in May, when it was helping with a removal in Childe Road. Just back from the sign in the middle of the road - no more than 15 metres, maybe less - is the wider road, with a pavement on each side and room for a large vehicle to stop and still let other traffic pass.

So why park where it's shown and block the road? Selfishness is becoming a nationwide habit, it seems.

THE FRIENDS OF SAINT MARY'S CHURCH

On July 17th at 7.30 p.m. there's a Fashion Show at the Edinburgh Woollen Mill Store, Ludlow. Tickets cost £5, including a glass of wine, and 20% off any non-sale items purchased on the night. For tickets, please contact Alec Osbaldiston on 01584 891351 or Diane Waddington on CM 272820.

Sunday 20th from 12.00 to 5.00 sees the Clebury Mortimer Garden Trail. A number of gardens will be open for you to visit and enjoy and maybe even glean some ideas for your own. Programmes with details of the gardens will be on sale at £5 each in St Mary's Church from late morning on the day.

CLEOBURY MORTIMER CARPETS

Supplying & Fitting of:-

- Carpets
- Natural Floorings (Coir, Sisal & Seagrass)
- Vinyls

Carpets supplied by: Victoria Carpets, Fibre Flooring & Alternative Flooring at Unbeatable Prices.

Contact Details:-

Address: 26 HIGH STREET,
CLEOBURY MORTIMER, DY14 8BY

Telephone: H:01299270095
M:07739186163

Email: garethleach@aol.com

Or check out our new website:

www.cleburymortimercarpets.co.uk

Kim Stanley
HEALTH & BEAUTY

0 1 2 9 9 2 7 1 8 0 0

Spraytan Non-Surgical Facelift Electrolysis Aromatherapy Waxing Reflexology
Gel Polish Spa Find Facials Jessica Nail Care Hot Stone Therapy Hopi Ear Candling

Enquire instore for full range of treatments available. Kim Stanley
IHBC - BABTAC

30. High St. Cleobury

REIKI

**Feeling Anxious, Stressed or Low ?
Reiki Soothes, Relaxes and Comforts.**

www.katejones-reiki.co.uk

Tel. 01584 890284

30 High St

Kate Jones

* Over 20 years experience in Reiki (Reiki Master)

PHYSIO

**Chartered Physiotherapist, Emmett
Practitioner, Acupuncturist** (pain relief),
Pain, Stiffness, Musculoskeletal Problems,
Injury, Neurological Conditions, Lymphatic
Drainage, Sinus Congestion.

Tel. 07905 766729

30 High St

Jill Sharp

SRP, M C S P, B S c (H o n s)

Luxury Eco Holiday Lodges For Sale At Cleobury Mortimer Golf Club

A unique opportunity to purchase and personalise your very own Luxury Eco Lodge in an exclusive development at Cleobury Mortimer Golf Club.

The first phase of this exciting development opens with your chance to buy a luxury eco lodge in beautiful South Shropshire and play unlimited golf on our fantastic 27 hole golf course.

With two lodge designs the 'Cleobury' and the 'Mortimer'. Both lodges are the perfect second home or holiday retreat.

- Fully Personalised To Your Taste
- 365 Days A Year Occupancy
- Exclusive Site On Golf Complex
- Lucrative Rental Opportunity
- Fully Furnished



Starting From **£140,000**
www.cleoburycountrylodges.com



Clarion Clippings - The Local News

SUMMER WEATHER CAN BE SO CRUEL

The rumble of thunder early on the morning of June 7th was not a welcome sound. The English weather can be cruel to people who organise outdoor events, like Shropshire's first Cycle Festival. But you can't keep the keen down, and early in the afternoon the first of 25 riders in the 50 mile Sportive rode in, with a glow of achievement and big smiles for the route and its scenery.



Frans Frisom was the first of the Sportive riders to finish.

There were trade stands in support, the familiar face of Kate Pearce of Hobsons on the Pearce Cycles display explaining that this is her parents' business and she was just helping out. There was

some very fine machinery on show, a reflection of the interest in cycling and the quality bikes you can find. Next door, Paul from Bewdley Outdoors showed the Jack Wolfskin and Buff clothing ranges, with a few bikes as well. He explained that he was avoiding too much overlap with the Pearce Cycles offering; good commercial sense. Paul does brisk business renting off-road wheels to visitors wanting to ride out through the Wyre Forest. And CC Campers from Clows Top had some very sharp looking VW T5 vans, the outdoor people's current favourite. Across the field young riders were trying out BMX bikes across jumps and the slippery field, some of them tasting the mud. We weren't tempted and looked in at the Sports Hall instead, where exercise bikes were whirring and a tube changing competition under the eye of Simon from the Pioneer Centre included visitor Luke Downey, who was getting tuition before having a go himself. Great stuff, getting the youngsters to learn how to deal with a puncture out on the road. Whatever the weather had done to hit spectator numbers, the people there to ride in the Sportive, or to do

some trade, all agreed that it was well organised and another venue to put in their diaries for the future. Congratulation to Richard Robertshaw of Step Out of Far Forest for the hard work and vision.



Visitor Luke Downey getting some good tips from Simon at the tube changing competition.

Keen people. Frans Frisom, a regular triathlon competitor and first to finish this time, rode to Cleobury from Lichfield on Friday. Then did the 50 local tour and on Sunday rode home.

AND DID YOU KNOW? That Cleobury now has its own cycling club, 'The Fountain Free Wheelers'? It's based at The Royal Fountain, they meet at 10.30 on a Sunday morning and slake their thirst when they get back to base. All in the interests of fitness, of course.



Home Support Services

All staff enhanced DBA checked with over 20yrs experience and training within the local authority/social services mainstream and dementia care sector. Fully insured.

Are you in need of support with the following basic day to day tasks?

Assistance during the day or night
Companionship
Shopping/Household tasks

Completing Forms
Pet Care
Attending social events/ appointments

Contact Liz
Tel: 01299 271623
Mob: 07826 929222
liz@lifelifeathome.co.uk

Other support services available on request.

www.lifelifeathome.co.uk

Contact Tracey
Tel: 01299 821183
Mob: 07957 659909
tracey@lifelifeathome.co.uk

- **Clarion Smalls - The Best of Local Skills, Knowledge and Value. Private Businesses Giving Great Service.**

WORLDWIDE ADVENTURE HOLIDAYS

One of our up and coming overseas holidays and expeditions...

Tamar River Expedition, Nepal (30 Oct -11 Nov 2014)

The best combination trip in Nepal - A classic trek and a world class rafting experience in one exciting adventure!

This is the ultimate Nepal adventure and far more than just a river trip. A real expedition experience combining a trek with up to 70 porters joining us to take everything from rafts and paddles, kitchen barrels and tents, as we trek into the river along a 10,000ft ridge with stunning views of the Himalayas and surrounding peaks. Once at the river, we then start the excitement of the Tamur River with some world-class grade 4 white water through remote villages, camping out on large sandy beaches under the stars each night. One of our personal favourites at Live The Adventure - a real hands on expedition where we encourage group participation to gain the most from the experience as we travel together to complete an amazing journey emerging at the end of the trip near the Indian plains with a real sense of achievement.

If this sounds like an adventure for you, check out our website for full details of this and other forthcoming adventures to Nepal, Bhutan & North America. For more information visit livetheadventure.co email travel@livetheadventure.co or call Holly on 01746 718436



Natalie Taylor Dip CFHP MPS Pract.

Specialist Foot Health Practitioner

Specialising in:-

- In-growing toenails
- Fungal infections
- Nail trimming
- Verrucae
- Calluses
- Corns

All from the comfort of your own home.

If you would like to make an appointment, please call on 07779 113982 or 01584 890112

Piano Tutor

Welcoming learners of any age,
Whether or not you've played before.
Day times currently available and some
After school and evening classes.

I can come to your home.

Francis Engleheart

07710 288526 fengleheart@hotmail.co.uk

- Gateaux Meringues Celebration Cakes
Sweet and Savoury Pastries and Treats

The Indulgent Baker

Cakes and Bakes for all occasions

Call Jackie: 07929 771 470

www.theindulgentbaker.co.uk

KNOWLE SPORTS SALES

Tenbury Road, Clee Hill, every month.

NEXT EVENT:

Saturday, July 5th

8.00 to 11.00am

WANTED: Good clean donations.

Collections: 01584 891249

Enquiries: 01584 890644

MOLE CONTROL CONTROLLED PEST REMOVAL

For a Free Quote Call:

**07791
175908**

CARTERS AUCTIONEERS

REGULAR AUCTIONS OF ANTIQUES AND
COLLECTABLES AT BLAKEDOWN PARISH
ROOMS, NEAR KIDDERMINSTER.

VALUATIONS FOR PROBATE & INSURANCE
HOUSE CLEARANCES

CONTACT: JOHN CARTER

11 CHURCH STREET

CLEOBURY MORTIMER

TEL: 01299 271130 / 07779 311 792

www.cartersauction.co.uk

The Clarion Jobs Page

**QUALIFIED MECHANIC REQUIRED @ HOPTON BANK GARAGE
FULL TIME POSITION , IMMEDIATE START, MUST BE EXPERIENCED.
WAGE ACCORDING TO EXPERIENCE.
PLEASE CONTACT HAROLD ON 01584 890225**

**Gardener required for general maintenance/upkeep of cottage
garden and grounds - Kinlet area. Tel: 07747 698 266**

Job Title / Company	Job Requirements	How to apply
General Labourer Cornbrook Construction & Building Services, CM	Labourer required to undertake general duties in Cleobury Mortimer. Job requirements as above. Uniform supplied.	Applications to sandra.dodd@cornbrookconstruction.co.uk 08454 567028
Full or Part Time Fully Qualified Hair Stylist. Spire Hairdressers, 16 Church Street, CM	Must be competent in all aspects of hairdressing. Full time or part time.	Contact Ann on: 01299 270821 (shop) or 01299 270033 (home)
Lunchtime Supervisor Lacon Childe School, CM	Require an enthusiastic, committed & reliable person who enjoys working with children. Part Time: 5.42 hours per week 1.25 – 2.30pm Mon – Fri. £6.4457 per hour.	An Application form is on the website: www.lacon-childe.org.uk Or contact Mrs. S Broad on 01299 270312 or email: admin@lacon-childe.org.uk
Chef/ Cook Kings Arms Pub, CM	Require a chef or cook hours and wages to be discussed.	For more details please contact Wendy on: 01299 271 954
Enthusiastic Bakery Assistant Ashley's Bakery, CM	Required to manage dispatch & packaging. Good communication skills needed as well as some IT knowledge. 5 mornings a week to include Saturdays. Hours: 5am – 10am.	Please call Estelle on 01299 271283 mornings
Trainee Equestrian Travel Expert In the saddle holiday on horseback, Neen Savage	Trainee Travel consultant required to arrange tailor-made riding holiday to worldwide destinations. Need to operate a bespoke travel booking system & must maintain good client relationships by telephone or email. Minimum 18 years old, with Grade B GCSE Maths & English. Excellent IT skills & a good communicator. Must have a passion for horses and travel.	To apply please send your CV and hand written covering letter (marked Personnel) to Olwen Law, In the Saddle, Reaside, Neen Savage, Cleobury Mortimer, DY14 8ES For more information visit www.inthesaddle.com

NJ Plumbing & Heating

All aspects of domestic plumbing:
bathrooms-kitchens-showers-central heating

Oil boiler servicing



Registered
Business

Phone 01299 270175

Mobile:07967 659624

COMPUTER REPAIRS MAMBLE

PC 'MOT' CLEAN UP £49.00
GET YOUR MACHINE RUNNING FAST AGAIN

Quote Cleobury Clarion and get your
next PC MOT for JUST £40.00

WINDOWS INSTALLATIONS

DIAGNOSIS, REPAIRS & UPGRADES
OF LAPTOPS & DESKTOPS

LAPTOP SCREEN REPLACEMENT

SALES OF TAILOR MADE PCs

IPHONE REPAIRS

APPLE MAC REPAIRS

HOME VISITS AVAILABLE

During office hours
Within 5 miles
£10 call out charge
£25 per hour

TELEPHONE
01299 832 723

FIND US ON THE MAIN
A456 BETWEEN CLOWS TOP
AND MAMBLE
Upper Moor End Farmhouse,
Mamble, DY14 9JD

Opening Times:
Monday to Friday,
9.00am - 6.00pm

www.computerrepairsmamble.co.uk

Stewart Mumford Architectural Services Bespoke Architecture

Great value personal service backed up with extensive local knowledge,
established links with other construction professionals to ensure
comprehensive packages specifically tailored to individual needs.

Initial consultation free of charge.

Specialist in Works to Listed Buildings, Affordable Houses,
Open Market Houses, House Extension and Alteration, Barn
Conversion and Commercial Projects.



T: 01299 271068
M: 07977 921039
E: office@stewartmumford.co.uk

fairway

Accountants & Business Advisers

Proactive professional team available 7 days a week. Highly competitive fees.

Contact: Simon Hector 07896 439594 or Simon Connolly 07973 360456

Offices in Cleobury Mortimer & Stourport on Severn

Main Tel: 01299 822283 Email: team@fairway-net.co.uk

www.fairway-net.co.uk

Clarion Clippings - The Local News

THE SEVERN HOSPICE FLYAWAY DAY

When we first heard of this idea, we thought it was too silly for words. Making a set of covers for an aeroplane? You are joking, aren't you?

Brian Manning wasn't. The man has a wry sense of humour when you talk to him, but he's a serious pilot with a list of racing successes to his credit. Including the Schneider Trophy. He knows his business and was prepared to let the Craft Club at Severn Hospice have a try.

His French-designed Durine two-seater was built by British company Rollason at the old Croydon Airport. It's fitted with a 100 hp Rolls Royce engine and has a handy turn of speed, as the racing successes confirm. He keeps it at the Milson Airstrip, a place that's changed a lot for the better in the last 25 or so years; Chris Hough and his wife made the party welcome as they arrived.

Severn Hospice arrived, shop manager Gayna Woodland, craft leader Catherine Evans, area manager Lynne Preece and a lady from their publicity side who didn't stay long enough to give her name.

Lynne Preece was the one who'd been 'volunteered' for

the flight and she helped push Brian's plane out of the hangar to be photographed before he began his briefing. There was a happy, lighthearted air to the day, but Brian concentrated on getting his passenger briefed for the flight. "Where do you live?" he asked. "Shrewsbury," replied Lynne. "OK, we can do a quick trip there," offered Brian. "Should take us about 20 minutes." 20 minutes to Shrewsbury and back! This is a different world.



Lynne was settled into the passenger seat and Brian explained the intercom set and how the instruments work; this is a dual control craft and Lynne would be flying it if she felt happy. Brian ran through his cockpit checks before firing up the engine and letting it warm up for take-off.

Pointed down the grass runway, the throttle was opened up and the little craft moved off. If you're only used to modern jets, this seemed tame as it took a gentle climb to pass over neighbouring trees. A quick return pass over the airfield and they were off and well away.

We were sharing a welcome drink with our hosts when Chris identified a familiar engine as Brian brought the Durine down in a smooth landing and taxied to where we stood. Lynne's ear to ear grin said it all. "Brilliant. Absolutely brilliant!" was her verdict as Brian confirmed that she'd taken the controls and flown through a bank of clouds. Lynne was asking about the cost of lessons and how much such an aircraft would cost - another convert.



The verdict: "Brilliant!"



Gilbert Carter

Specialist Joinery

- Built in Wardrobes
- Double Glazed Wooden Windows
- Staircases
-

Email: Gilbertcarter51@gmail.com
www.gcartersmartjoinery.com

01299
270626

Qualified tradesmen, fully insured

**Birthday Parties
Holiday Activity Days**

**Climbing / Abseiling
High Ropes
Raft Building
Zip Wire
Big Bounce
Challenge Course
Indoor Caving
Ask about others**



**Tel: 01299 271217
Enquiries@pioneercentre.org.uk**



Minimum Age 8yrs

**90 minute Session
£11 per person
Minimum 10 people**

**3 hour Session
£20 per person
Minimum 10 people**

**Hire a room for an hour
After your session
To cut the cake etc £15**



CLEOBURY MORTIMER PLAYGROUP

“.....ALL FRIENDS TOGETHER”

Now proud to be based at Cleobury Mortimer Primary School.

Friendly and caring staff with flexible sessions times *(term times only)*

**FOR ALL
ENQUIRIES
PLEASE
PHONE
JANE OR
RACHEL ON;
07816 193933**

Ofsted “GOOD” inspection report

Government 15 hours funding available for 3-4 year olds.

***PLACES NOW AVAILABLE FOR CHILDREN
AGED 2-4 YEARS.***

Registered Charity no: 1037191



**DRY CLEANING & LAUNDRY SERVICE
20 HIGH STREET, CLEOBURY MORTIMER
01299 270571
HOUSEHOLD & COMMERCIAL WORK WELCOME
FULLY ATTENDED, OPEN 7 DAYS**

Self Service ~ Full Service Wash/ Dry/ Fold/ Ironing ~ Large Machine for Big Items
Service Washing for Duvets/ Blankets/ Sleeping Bags ~ Team Sports Kit Laundry Service
Equestrian Rug Cleaning ~ Laundry Service for Pet Items
Professional Shirt Service ~ Nikwax Wash & Proof for Outdoor Clothing

.... the place to air your dirty laundry!

Star of the Small Ads: Knowbury Cane Seating

It's a good name for a business; tells you what they do and where they are. And reflects the no nonsense, honest approach of the man himself, John Felix. "I taught myself. 25 years ago we had some chairs that needed mending and I sat down with a library book in one hand and some cane in the other," he smiles. He's come a long way since then, with customers from as far as Bristol and some very tricky jobs done.

Like the family heirloom baby chair, made in 1914 for the Captain's first born by the regimental carpenter and recently re-seated. "The lady explained to me that it was a pee-through seat," laughs John. He laughs a lot, happy in his work and the satisfaction of saving some rare old pieces, like the c.1700 chair, bought in rough condition at auction, its woodwork restored by a friend

and the cane panels reworked as original before being sold again. You can see why he's proud of the picture in his crowded album.

"Cane was brought from Holland to England by Charles the Second," he explains. "The material traditionally comes from Indonesia, where the Dutch had colonies. They still largely control the import into Europe, but as a one-man band I buy my supplies from wholesalers."

It comes in skeins of quarter or half kilos, numbered according to the width of the cane, from the thinnest 00 upwards to 6; strangely, there's no 5. The drilling of the holes through which the cane is passed to build up the weave of a panel has to be precise; he showed us one chair with odd drillings where he had disguised the fault. We couldn't see it.



John at work. The secret? "Care and perseverance."

Tools are minimal: knife, scalpel, scissors, probes to help the cane thread through a tight hole and a small hammer. There's no tacking, just feeding cane through holes and tapping in a wooden peg to secure the corners. His service goes beyond cane, with repairs to woodwork or associated upholstery available through his craftsmen contacts. A good man to know.



**KNOWBURY
CANE SEATING**

*Cane Weaving for Chairs
& other Furniture*

Redthorpe Villa, Knowbury, Ludlow
Shropshire SY8 3JL
Tel: 01584 890638

Guitar Tuition

- ◆ Experienced tutor based in Stottesdon.
- ◆ Teaching for 15 years privately and in schools.
- ◆ One to one or shared lessons, friendly, relaxed environment.
- ◆ Member of the Registry of Guitar Tutors and Musicians Union.
 - ◆ All ages, styles and abilities welcome.
 - ◆ CRB checked, full liabilities insurance.

Contact: MARK.CHECKLEY@sky.com
01746 718636 - 07708 386433

TLC CARE AT HOME THE ALTERNATIVE TO A RESIDENTIAL CARE HOME

Experts in delivering the right amount of care to suit your individual needs in the comfort of your own home.

The services we can offer include:

- All staff are fully checked (CRB/DBS) & caring
- Assist with all bedtime needs
- Feeding
- Dressing & undressing
- Full personal care
- General housework
- Meals
- Prompt medication
- Monitor health & care
- 24 hour care
- And more

This may not be as expensive as you think and you may be entitled to help with funding

For information or a brochure call **01299 272897**

More of Those Very Handy Small Ads ...

Experienced teacher
Key Stages 1 - 3, plus Special
Needs. CRB Checked.
Offers Tuition in Core Subjects
plus ICT. Group Tuition can be
arranged.
For further details, ring
07577 864 350

HANDY MATT

FOR ALL THOSE JOBS THAT NEED DOING OR YOU NEVER GET DONE AROUND THE HOME OR GARDEN. ALL JOBS CONSIDERED... RATES TO MAKE YOU SMILE... CALL ME TODAY AND GET THEM DONE!
 GARDENING TO GUTTERING...
 PAINTING TO PATIOS...
 TREE SURGERY TO TILING...

TEL 07731 459631 OR 01299400420



Ever After

- Breakfast club
- After school club
- Holiday club
- "Forest schools" outings
- 15hrs education funding
- 24U funding
- Age ranges: 3 months to 11 years



Day Nursery
 Cleobury Mortimer

Please contact us on 01299 272 777
 Or Call in to see us anytime.

Friendly, Caring Environment for the Community

24/7 ROOFING & GUTTERING SERVICES

THE SPECIALIST ROOFING COMPANY
 EST. FOR OVER 30 YEARS

- ✓ CHIMNEY & LEAD WORK
- ✓ FELT ROOFS
- ✓ TILING
- ✓ ROOF CLEANING
- ✓ FASCIA BOARDS
- ✓ SLATING
- ✓ SHEET ROOFING

ALSO SPECIALISING IN:

- ✓ GUTTER CLEANING
- ✓ GUTTER REPAIR OR RENEW
- ✓ RESIDENTIAL OR COMMERCIAL
- ✓ FREE NO OBLIGATION QUOTES
- ✓ DISCOUNTS FOR OAP'S
- ✓ REFERENCES Available

TEL: 01584 878728 MOB: 07977 560 763

HIS & HERS

Dog Grooming Parlour

All breeds and
 Cross breeds professionally
 Trimmed and Groomed



J. A. Guest

Tel: 07790 796 027

Alan Smith Aerials

Digital TV Installations.

Freeview aerials fitted and distributed around the house.
 Freesat box, dish, and cable supplied and fitted. One off payment, **No contract or subscription required.**
 Extra points, Repairs, New fits, Set ups, Multi room.
 All work is carried out by a **Local**, fully qualified and insured installer.

01299 270007 or 07970 675728

GRANITE KITCHENS

BY FONTOURA WORKTOPS Ltd
 of LEOMINSTER

BESPOKE KITCHEN & BATHROOM DESIGN
 GRANITE, MARBLE, SLATE & QUARTZ

Tel: 01568 612871
 Mobile: 07738 934354
 www.fontouraworktops.co.uk

David Ward firewood

Do you need a dependable consistent quality supply of Hardwood and Softwood Firewood? Cut & Split to suit and delivered in breathable 1.2 cubic metre bags so no need to restack.

Small delivery vehicle fitted with crane can deliver to most situations.

David is happy to discuss your requirements.

Mobile: 07866 441154
 email: david@dskw.co.uk

The Severn Edge Vets Pets Page

June has been quite eventful in the Hall household. We are proud to announce the safe birth of our daughter Isabelle Eva. Born 04th June 2014, weighing 8lb 5oz. Bubbles, I am afraid to say, has quite definitely moved out. One sniff of her toes was enough to put him off so far, and he still hasn't plucked up the courage to go anywhere near her after two weeks at home. As cats do, he has made the much more sensible decision, and decided to spend more time in the garden, and only come in when absolutely necessary... for food.

July brings us long days and short nights, plenty of time to be out walking with our friends, and maybe even some sunshine. Through July at Severn Edge Vets we are concentrating on dental health – offering 10% off dental products and services, and 10% off any anal gland expressions also (because full anal glands in dogs is one of the most common reasons for bad breath... I'll leave you to work out the connection – lovely animals!).

When we see your pet to check their teeth, there are some basic things we check, but how do you know if you should bring them to us in the first place?

Dogs, and cats' teeth are rarely pearly white because they don't brush everyday twice a day. Some brown tartar buildup is perfectly normal on pets' teeth. However tartar building up along the gum line will trap bacteria around the gums, leading to inflammation (gingivitis). We all have a

small amount of gingivitis, but let it progress too far, and we get pain, smelly breath, gum recession, leading to bone loss in the jaw, wobbly teeth, root abscesses, acute pain and discomfort.

Have a look at your pets' teeth (if they are friendly and willing to let you look!) and see how red the gums are just beside the teeth. If the gums are a nice salmon pink colour all the way down to the tooth border – all is likely to be okay. If you can see a 1-2mm red line around the base of any or all teeth, this is gingivitis – often evidence that something needs doing. Bring them in and we can get it checked, and treated if necessary, all with 10% off through July.

As always – just pick up the phone and speak to one of our Vets if you have questions. We are always happy to help.

Thanks for reading

Jeremy Hall
BVMS MRCVS.

Severn Edge 
VETERINARY GROUP

24 hour emergency care
provided by our own veterinary surgeons

Cleobury Mortimer:	01299 271967
Bewdley:	01299 409157
Kinver:	01384 873660
Bridgnorth: Hospital	01746 763998
Nurse on site 24hrs 7 days a week	

Other branches across Shropshire

Equine (Aston Munslow): 01584 841080

Farm Animals, Commercial & Small holders.
Farm Animals: 01746 713911
01299 271537

www.severnedgevets.co.uk



More Clarion Smalls. No Big Company Policies Here, Just Local People Willing to Help



Logs West Midlands

Why not buy your winter supply of firewood now to guarantee starting the winter warm with seasoned logs.

- Seasoned firewood ready to burn •
- Kindling • Heat Logs • Range of Coals •

Established Firewood Supplier
Delivered or collected (from yard on Saturdays)
Firewood cut to size required

Contact

Logs West Midlands
01299 250380 or 07736 250414
www.logswestmidlands.co.uk

Mr Chris Lewis

Personal Support and Care at Home

Over 20 years experience

NVQ qualified and CRB checked

CALL: 079 01 91 81

Also on: SimpleNeeds.co.uk

Call for a free quotation



COUNTRY SKILLS

CPCS/NPTC Approved - Fully Insured

Outside renovation, Tree Surgery, Hard
Landscaping, Slabbing and Fencing,
Decking, Roofing, Contract Mowing.

Roger Price and Sons

Mobile 07967 140720



A.B. Plastering

Plus Traditional Lime Plastering

Adrian Booton
PLASTERER

4 Severne Green, Bayton
Nr Kidderminster, DY14 9LL

Tel: 01299 832 838

Mobile: 07974 582 524

The Far Forest Centre

Residential youth centre and adult meeting venue.
Self catering residential centre available for use by
youth groups, uniformed organisations, schools
and Duke of Edinburgh Award groups.

Located in Far Forest village.

Basic warm self catering accommodation for small
or larger groups.

Ample car parking space

£10 per person per night for up to 25 people

£9 per head for groups of 25 or more.

Booking enquiries to Mrs Edna Mills 01299 266742

WADE DAVIES FLOORING BACK IN TALBOT SQUARE.

Our Shop reopened in April.

Look in to see what a great
range of floorings we have, all
backed by good service.

FREE QUOTES, TOO!

Call Wade on

07794 430038

Soft Furnishing and
Interior Design Services

Masquerade

Fabrics Limited
01299 271 680
36 High Street Clebury Mortimer near Kidderminster
Worcestershire DY14 8DQ

Retailers for Sanderson, Harlequin, Monkwell,
Crowson and many more..

Comprehensive design, measuring and fitting service

Happenings on High Street

A FRIENDLY TOUCH

John Hands at Hands On Printing changed his Clarion advert drastically last month. He had given a customer the wrong DVD and as it was a quick job there was no record of the customer's name. So he gave over the advert to trying to trace the lady and give her the one she expected. When we spoke to John on June 14th he'd not had any response.

Do you know anyone who's been disappointed to find they have an unknown DVD? John is on CM 272757.

TANNING TOUCH

Wade Davies's shop on Talbot Square looks different these days, with the addition of a tanning booth. Partner Beverley tells us she found the established booths in the area fully booked and realised there was a need. One shop, two totally different markets to serve, neat touch. And it's now open six days a week. You can call Beverley on 07977 863 799.

AN EVENTUAL WINNER

The winner of the very generous hamper of fruit that Julie and Mike at Carrot Tops offered as a raffle prize in their First Birthday celebrations, has been claimed. It took some

time, with the winning 136 posted in the shop window and on the Facebook page, but eventually a lady who visits Cleobury at weekends and is a regular customer in the friendly little shop came along with the right ticket. Very well done that lady.

LLOYDS IN SUPPORT

Lloyds Bank supported the fund raising drive that Shaunah Murrell organised over the Christmas period. The bank matched what Shaunah herself did, which amounted to something over £800 they added to the total. Nice touch.

And they're at it again, supporting a Live Music evening on July 5th. That's when The Cellar Boys will be performing at Neen Sollars Victory Hall, raising funds for the Alzheimer's Society. It all starts at 7.30, the tickets at £10 each include a supper, and there's a bar and the inevitable raffle. All for a good cause. Ask in the bank about tickets - they'll know.

MYSTERIES EXPLAINED

AT THE K.A.

Faith In The Pub at the King's Arms on Monday the 7th has an unusual title - 'From One Mystery to Another.'

It's Cleobury's new curate, Richard Mutter, who once

worked in T.I., something of a mystery to most of us according to the posters. Now he's going to talk about sharing his faith, arguably a mystery to even more people. He should be worth hearing as he explains a really big change in his life.

It starts at 8.00, there's no charge and later in the evening there are free sandwiches. Just who pays for those is something of a mystery, too.

AARON AT THE LAMP

Things never stand still at The Lamp. This month they've booked Aaron Booton to serenade diners on the 17th. It's an all-in deal, a four course meal at £15 a head with live acoustic entertainment from a renowned local musician in his quieter mood without the amps shaking your eardrums.

There's a growing tendency in the town's pubs to include music as part of the evening. It's all part of a very old tradition and now it's spreading into the eateries as well. Adds to the atmosphere and encourages new custom as sometimes bands' followers find another place to satisfy both thirst and the need for entertainment. Dare we say it's more entertaining than football or dominoes?

IT'S A BUSY SUMMER AT THE ROYAL FOUNTAIN INN



14 real ales,
4 ciders/perries,
live music &
great food

Fri 4th, Sat 5th & Sun 6th July ♦ Free entry

FOOD IS COMING ...

Our Mediterranean menu
launches on 9th July

Initially, food will be available on
Wednesday evenings and Saturday
lunchtime and evenings, but will
increase over the summer months



For more details visit www.royalfountaininn.co.uk & [facebook.com/royalfountain](https://www.facebook.com/royalfountain)

Tel: 01299 272720

Another Page of Clarion Smalls

Delightful seaside cottage overlooking the beautiful Duddon Estuary. Haverigg is on the South West coast of Cumbria on the fringe of the Lake District.

Lazey Cottage, Cumbria



- 2 bedrooms + cot
- Children and pets welcome
- Immaculately presented with all facilities
- Prices fully inclusive. From £295 to £535 pw
- Short breaks and Winter lets may be available.
- For brochure, please ring:

Gloria: 01229 772515 or 07811555978

Pat: 01229 773291 or 07743704783

JK PAINTING AND DECORATING

Local
Painting, Wallpapering and Tiling.

No Job Too Small

Email: jkpaint@hotmail.co.uk

Phone: 07980 050 172

ALAN PRICE DIRECT TRAVEL

PRIVATE
HIRE
TRAVEL

AIRPORT
TRANSFERS

LOCAL &
LONG
DISTANCE,



COURIER
SERVICE

FRIENDLY &
RELIABLE

FULLY
COUNCIL
LICENSED

Tel: 01584 890014

MOBILE: 0773 3079679

GARDEN • GROUNDS & PROPERTY MAINTENANCE

Reliable, conscientious, productive service.
References available.

Call Tom now **07779 32 86 92**

JESSICA BIRCH
FREELANCE GROOM AND EQUESTRIAN SERVICES

T: 07817140221

E: jessica_birch@outlook.com

W: www.jbequestrianservices.com



- Clipping
- Pulling/Trimming
- Plaiting
- Show/Sale Preparation
- Exercising

- All yard duties
- Holiday cover
- Sickness cover
- Tailored Services
- Horse/House/Hound Sitting



LES HALL

◀ Window cleaning service ▶

01746 861752

—Established 1986—

Local Piano Teacher

Lessons for RSM Grades or Just for Fun.
Any Age Welcome, it's never too late to learn.

Reasonable rates

Please contact Wayne for availability

01299 266150

Computer and Laptop

Repairs.

No fix No fee

CCTV & Access Control

Jenpac ICT Solutions

01746 860297

www.jenpac.co.uk

Established 2005

Electrician

Indoor/Outdoor Lighting Specialist
Repairs and Installations

No Job Too Small, Reasonable Rates

For an Honest and Friendly Service Please Call Mathew

Part P

Approved

Tel: 01584 711553

Mob: 07974 638045

Clarion Clippings - The Local News

SHROPSHIRE KITE FESTIVAL

This friendly event has almost made Cleobury its home, after a move here from Shrewsbury. Organised by Sky Bums of Wem, it's booked into Lacon Childe School for the August 9th/10th weekend. It's free for interested spectators to walk around, and you'll find a huge range of kites hovering as flyers from all over the country show off their design, building and flying skills. And pupils from both Lacon Childe and Phoenix schools, who've been encouraged by the event to try a little kite building, will be showing off their handiwork.

The hobby covers everything from the modest little outfits that the youngest children can use, to four line kites that have you wondering how they're controlled. And there will be trade stands providing everything from advice to kite kits and ready built units.

There is no published timetable, as this is a relaxed and friendly event where casual visitors will be made welcome.

KINLET PLAYGROUP

It's been all go at Kinlet Family Playgroup recently. Our sessions are very busy and the

children are preparing for their transitions to school or for becoming our 'big' children at Playgroup. We have been tending our potato crop and finishing the diary for the Cleobury in Bloom competition.

Nearer to end of term, we will be holding our annual Playgroup Summer Outing. Keeping it local and within the family, staff, children and parents will be spending a morning at our milk suppliers, the Robinsons' Mawley Town Farm. A family who have had four children attend KFP over the years. We can't wait to meet the animals, see the huge wind turbine up close with lorries and tractors, and find out where our milk comes from.

Good news. The team who participated in the Bridgnorth Walk, raising money for Playgroup, have realised nearly £1000. A huge sum for a small charity group such as ours. We would like to thank all sponsors and especially the hardworking team that was headed up by one of our current dads, Dave George.

Zoe Pearson

A POSH TEA PARTY

Neen Savage Village Hall will have a rather special atmosphere on August 2nd,

when the local W.I. hold a 1950s themed Posh Tea Party. It all starts at 1.00 and those who dare to try something different will be served tea, sandwiches, scones and cakes on real china, with chintz and bunting in support. If the weather is in a good mood (it always was in the 50s) there will be service outside as well.

It's all in aid of the W.I. and the only thing not quite 1950s is the price of £5.00 a ticket. If you are coming with a large party, a call to Angela Flowers on CM 270318 will help no end with the catering.

POSH POTTIES PLUS

The Posh Potties business is growing, with additions to the luxury toilet units they started out supplying to those who wanted something above the average.

They now have a large refrigerated trailer that will keep food and drinks cool for an outside event, a 1+1 trailer suitable for small parties and Portaloos. Don't overlook how economical local hire like this can be, with its minimal travel charges. At the 2013 Borders Classic Bike Show the portaloos came from PP, at about half the previous year's charge.

WYRE FOREST FUNERAL SERVICE

Independent Family Funeral Directors covering Cleobury & all surrounding areas offering a complete, dignified, personalised Funeral Service.

* *Pre-Payment Funeral Plans*
* *Catering & Venue Arranged*

* *Horse Drawn Funerals Available*
* *Monumental Masonry*

* *Home Visits*
* *Personal Service*

Funeral Director: Adrian Satterly

9, TALBOT SQUARE, CLEOBURY MORTIMER

TELEPHONE: 01299 540541 OR 07450 764214 (24-HOURS)

'Serving the local community with dignity and understanding'

**Clarion Smalls - Local Skills, Knowledge and Value.
Private Businesses Giving Great Service.**

BOUNCY CASTLES *Fun for all ages!*
SLIDES
GLADIATORS
Bungee Run
SUMO WRESTLING

Martin Prosser
t 01299 401 971
m 07956 058 828

NEW! for human hamsters
GIANT Zorb Balls

Dawn Chorus Leisure
www.dawnchorusleisure.co.uk

FALCO HEATING
The Solid Fuel Specialists
GARY HARDING - HETAS registered
Old Hall Farm
Clows Top
Worcs. DY14 9HE
T: 01299 832030
M: 07896 685 947
FALCO HEATING@BTINTERNET.COM
WWW.FALCOHEATING.COM

T. CARTWRIGHT LTD
BUILDING, PLUMBING, HEATING AND
ELECTRICAL CONTRACTOR

Specialist in Restoration and Renovation
of Period Property

Oil Fired Central Heating Boiler Service,
Repair & Installation of Systems
11 Lower Street,
Clebury Mortimer
DY14 8AA
Tel/Fax: 01299 270725
Mobiles: 07831 896392, 07831 896394

MEMBER APHC
ASSOCIATION OF PLUMBERS & HEATING ENGINEERS

dhjh *a refreshing change in accountancy*
Email: Tim.Giles@dhjh.co.uk

We are a long established firm of Chartered Certified Accountants working in the local community.

For help with all aspects of accounts and tax, contact **Tim Giles FCCA** or **Celia Potter** for a free initial meeting.

Tel: 01584 811686
81 Teme Street, Tenbury Wells. Worcs. WR15 8AE

ANDREW JELLEY OPTICIANS

Andrew Jelley BSc (Hons) FC Optom
Teresa Davies FBDO
Duncan Edwards FBDO
Alex Lane BSc (Hons) MC Optom

14 Teme Street, Tenbury Wells, Worcestershire, WR15 8BA
tel: 01584 811445 email: enquiries@andrewjelleyopticians.co.uk
www.andrewjelleyopticians.co.uk

Get Up & Go With RDF!

Body Control Pilates™
Free taster session!
The Market Hall, Clebury Mortimer
Tuesday 10th June, 10.30 - 11.30am
All welcome!
To find out more & book your free place
e-mail: ricdilworth@gmail.com
telephone: 07888 080 530.

TONE UP
LOSE WEIGHT
LOOK GOOD
FEEL GREAT!

S & P PLASTERERS



- ALL ASPECTS OF PLASTERING WORK COVERED
- BUILDING WORK UNDERTAKEN
- BATHROOM & KITCHEN FITTING / TILING
- FLOOR TILING
- ROOF REPAIRS
- GUTTERING & FACIA REPLACEMENT
- POINTING
- SLABBING

CALL NOW FOR A FREE NO OBLIGATION QUOTE.....07721 783696 or 07885 504703



Letter from Westminster - Philip Dunne MP

Summer is here and with it a sporting events which can captivate much of our nation as we witness those at the peak of fitness push themselves to their limits. Most of us will never know the heights of professional athletics, in fact too many struggle to manage the NHS recommended two and a half hours of moderate exercise each week. But it has never been easier to get involved in such a wide variety of sports, particularly for children.

Last week I was happy to promote National School Sports Week across South Shropshire. Encouraging children to take part in sport is crucial to tackling obesity by developing a lifelong passion for health and fitness. Sport can show children the rewards of earning success through hard work and dedication, a useful lesson for life.

This month South Shropshire also hosts the Wenlock Olympian Games, its 128th anniversary. It provided inspiration for the modern Olympic Games and today showcases the sporting talents of local children and adults in a wide range of events. Of course, no summer is complete without that most British of sporting events, Wimbledon. Last year's victory by Andy Murray was an historic moment for British men's tennis, a feat not experienced since Fred Perry won the men's singles title in 1936. This year's competition will be the first under the eye of Shropshire's Cathie Sabin,

the first female President of the Lawn Tennis Association. As a founder trustee of the William Penny Brookes Foundation, Cathie has supported sporting and cultural opportunities for young people, which I am sure she will build on through the LTA.

This year we have the excitement of the World Cup in Brazil, the ultimate expression of the international passion felt for our most successful sporting export – football. The popularity of football around the World is truly staggering. The game's superstars are recognised the world over, inspiring young people to play football wherever they can find space to kick a ball. Most children need little encouragement to play football, but players like Ronaldo, Messi and Rooney will inspire the stars of future World Cups.

As we get older and our bodies are less able to cope with the strains of physical exercise, we are sometimes tempted to take part in less physical activity. But there are many clubs that cater to an older audience, so there is no need to turn our backs on the social and health benefits we can receive from exercise. I hope that everyone across South Shropshire, across all generations, will make the most of the rare British sunshine and enjoy the wide variety of sporting activities in Shropshire.

Philip Dunne



**QualitySolicitors
Lumsdons**

Your local legal experts

Whether you're moving home, sorting out your will or dealing with a relationship break-up, you can be sure you're getting expert legal advice from local people who care. With us, there will be no hidden costs, no legal jargon and your first advice will always be free.

Please get in touch to find out more or to arrange a home visit:

Stourport
01299 827766

Worcester
01905 730670

E: info@lumsdonsllp.com
W: qualitysolicitors.com/lumsdons

The July Clarion Social Calendar

Date	Time	Details	Contact	Telephone Number
Wed 2	10.00am	Walking for Health group meet for a leisurely stroll, starting from the Sports Centre	Mandy Smith	01299 270312
Wed 2	7.00pm	Chris Wardle flies in from distant Laos to talk about his deeply funny Vincent Crow books. At the Library, Cleobury Country Centre, Love Lane. Free entry.		
	8.00pm	Whist Drive at Doddington Village Hall	Sonia Pearsall	01584 890874
Thu 3		BLACK WHEELIE BINS AND RECYCLE BOXES EMPTIED TODAY		
	7.00pm	Rock Pathfinders Evening Walk, starting from the Whittington Inn on the A449. OS reference 856827.	Alan	01299 400304
Sat 5	8.00am	Knowle Sports Ground, Clee Hill, host their monthly sale of household goods and clothing. Great place for a bargain		
	10.00am	MacMillans Cancer support Coffee morning, Market Hall, Cleobury. Raising funds for their vital work.		
	1.00pm	Highley Fete and Festival Day, in the Severn Centre	Nadia Dodd	01746 860000
	2.00pm	Rock Parish Fete, a good fun event, with classic cars as an additional attraction. It's a wonderful Village Hall, an attraction in itself.		
	7.30pm	The Cellar Boyz host Live Music at Neen Sollars Victory Hall. £10 a head, all profits to the Alzheimer's Society. Supported by Lloyds Bank.		
Sun 6	10.00am	Bewdley Local Produce Market, in Loade Street		
Mon 7	7.00pm	Cleobury Mortimer Parish Council meet in the Market Hall. The first 15 minutes is open to the public to air concerns to the Council.	Matt Sheehan	01299 271154
	8.00pm	Faith in the Pub at the KA, Church Street. SEE PAGE 23.		
Wed 9	10.00am	Cleobury Co Co Coffee Morning in the Market Hall, with music from the Cleobury Choir at 11.00am.		
	12.30pm	The Ladies Lunch Club meet at The Plough in Far Forest	Alison Osborne	01584 890414
	7.30pm	Neen Savage WI celebrate their 65 th Anniversary with a convivial evening at the Golf Club.		
	8.00pm	The Royal British Legion meet at The Bell inn, Lower Street		
Thu 10		GREEN WHEELIE BINS EMPTIED TODAY		
	7.30am	St Mary's Breakfast Club meets at the Kings Arms to hear Jock Brown talk about "Being a Helicopter Pilot"	Gill Chapman	CM 270575
Fri 11	8.00pm	Bingo Night at Cleeton St Mary Village Hall		
Sat 12/ Sun 13		Stourport Vintage Steam Rally, at Coney Green Farm on the B4194, postcode DY13 0TE		
Tue 15		Edna Vacher is 100 years old today! <i>HAPPY BIRTHDAY!</i>		
Wed 16	10.00am	Walking for Health meet at the Sports Centre	Mandy Smith	01299 270312
	7.30pm	Stottesdon WI meets at Chorley Village Hall to hear Alson Hasten talk about "Bewdley Willow". SEE PAGE 49.	Marian Martin	01746 718151
	8.00pm	Whist Drive at Doddington Village Hall	Sonia Pearsall	01584 890874

Hands on Printing

**Print your own photographs on our SNAP LAB PRINTER
or we can do it for you.**

**All Digital formats disc- cards or phones
Print sizes 6 x 4 5 x 7 8 x 6**

Enlargements from 10 x 8 to 36 x 24 inches

Canvas prints from 16x12 to 20 x 30 inches

Prints from 35mm slides - Celebration Banners - Paper or Plastic

Most video tapes transferred to D.V.D.

Audio tapes and records to C.D.

Cine films to D.V.D.

Pass ports - Bus pass - Driving licence photos etc.

Colour Business Cards - Flyers - Raffle Tickets B-W or Colour copying

A selection of Photo Frames now available

43, High street, Cleobury Mortimer. DY14 8DQ Tele:- 01299-272757

The July Social Calendar - continued

Date	Time	Details	Contact	Telephone Number
Thu 17		BLACK WHEELIE BINS AND RECYCLE BOXES EMPTIED TODAY		
	10.30am	Rock Pathfinders walk out from the Colliers Arms, on the A456 at Rock. OS Ref 725722	Alan	01299 400304
	6.00pm	The Lamp Restaurant hosts Aaron Booton in acoustic mood for the evening, with a special deal for four course meals. Sounds like great value.		
	7.30pm	Friends of St Mary's have a visit to the Edinburgh Woollen Mill Store in Ludlow. Details and tickets. SEE PAGE 11	Diane Waddington	01299 297820
	7.45pm	Whist Drive at the Sports a& Social Club, love Lane	Alan Evans	CM 270114
Fri 18	8.00pm	Bingo Night at Doddington Village Hall	Sonia Pearsall	01584 890874
Fri 18/ Sun 20		Big Noise and Fun Weekend in Hopton Court at The Hole in the Wall. Local talent, big tribute bands and more, plus food and the odd drink. www.holeinthewallfestival.co.uk		
Sat 19	9.30am	Cleobury Country Farmers' Market is on the town's Historic Core, outside the Parish Church. If you like food, you should be there.		
Sun 20	10.00am	Ludlow's first Dog Day. Organised by the Rotary Club, at Stokesay Court, near Craven Arms		
	12.00pm	Cleobury's Garden Trail. Programme £5.00 each from the Parish Church on the morning.		
Wed 23	10.00am	Story Time with the Dogs Trust at Cleobury Mortimer Library. Doggy stories and advice on careful ownership.		
	7.00pm	Ben Smith talks about his detailed work on the flora of the area, a subject he knows well after more than seven years studying it. Admission to this Friends of the Cleobury Library event is free.	Jim Reynolds	CM 270642
	7.30pm	Clows Top Gardening Club meet at The Victory Hall. Dr Murray Mylchreest talks on "Tales from Garden Labels".		
Thu 24		GREEN WHEELIE BINS EMPTIED TODAY		
Fri 25	8.00pm	Bingo Night at Doddington Village Hall	Sonia Pearsall	01584 890874
Sat 26	10.00am	Indoor car boot sale at Highley's Severn Centre	Nadia Dodd	01746 860000
Thu 31		BLACK WHEELIE BINS AND RECYCLE BOXES EMPTIED TODAY		
AND LOOKING FORWARD TO AUGUST				
Sat 2	1.00pm	Posh Afternoon Tea Party at Neen Savage Village hall. 1950s atmosphere with all the trimmings they can muster. £5.00 admission by ticket or on the door. In aid of W I funds. SEE PAGE 25.		
Sun 3	3.00pm	Royal British Legion parade to the War Memorial, followed by a church service.		
Mon 4	8.00pm	Act of Remembrance at the War Memorial, followed by Requiem Eucharist in the Parish Church.		
	10.00pm	National Lights Switch Off until 11.00pm to commemorate the beginning of the 1914-18 First world War		
Wed 6	10.00am	Walking for Health meet at the Sports Centre	Mandy Smith	01299 270312
	10.00am	Storytime with Dogs Trust at the Library. See July 23 rd above		
	8.00pm	Whist Drive at Doddington Village Hall	Sonia Pearsall	01584 890874
Thu 7		GREEN WHEELIE BINS EMPTIED TODAY		

Flowers By Fiona *est 1991*

**Fresh Flowers made to order
Special Occasions**

**Weddings, Anniversaries, Birthdays
Sympathy Tributes**

**19a High Street,
Cleobury Mortimer**

Tel: 01299 272 995



www.mccartneys.co.uk



www.phippsandpritchard.co.uk

34 Greenhill Close - Tenbury Wells

A three bedroom, semi-detached property located in a popular estate just a short walk from Tenbury Wells town centre. The property benefits from gas central heating, double glazing throughout and a single garage. Energy rating C



O.I.R.O.
£178,500

39 Grove Meadow - Cleobury Mortimer

Two bedroom property in a popular residential location. With kitchen, living room, bathroom, parking and views to the surrounding countryside. Double glazed and parking for two cars. Energy Rating C



O.I.R.O.
£134,950

1 The Sidings - Newnham Bridge

This award winning, 3 bedroomed, semi-detached property built in 2006 using reclaimed roof tiles and brickwork. The property comprises of: living room, kitchen, conservatory, downstairs cloakroom, master bedroom with ensuite, two further bedrooms and family bathroom. Double glazing throughout, LPG gas central heating and a log burner. Energy rating C.



O.I.R.O.
£197,000

Wayside - Cleobury Mortimer

A character detached dormer bungalow in the popular market town of Cleobury Mortimer having versatile accommodation over two floors. Energy rating F

NEW



O.I.R.O.
£220,000

78 High St. Bridgnorth Shropshire WV16 4DS
Tel: 01746 767488 Fax: 01746 767081
email: bridgnorth@phippsandpritchard.co.uk

31 Worcester St. Kidderminster Worcs DY10 1EQ
Tel: 01562 822244 Fax: 01562 825401
email: sales@phippsandpritchard.co.uk



www.mccartneys.co.uk



www.phippsandpritchard.co.uk

Cleobury Meadows

A modern, three-storey, 4 bedroomed property located in the town of Cleobury Mortimer. Accommodation to include: lounge, kitchen, downstairs WC, 4 bedrooms (one with ensuite) and family bathroom. The property has a small private garden to the rear as well as a detached garage with up & over door. Energy rating TBC



O.I.R.O.
£199,950

9 Housman Way - Cleobury Mortimer

A three bedroom, mid-terraced property located in the town of Cleobury Mortimer. Recently completed the property benefits from double-glazing throughout, garage and driveway parking and an eco-friendly air source heating system. Energy rating B



O.I.R.O.
£174,995

30 Godsons Close - Tenbury Wells

This end terraced, 2 bedroomed property is ideal for first time buyers or for buy-to-let investors. Accommodation to include: living room, kitchen, conservatory, two bedrooms and family bathroom. The property benefits from gas central heating, gas fire in the living room and double glazing throughout. Energy rating D

NEW PRICE



O.I.R.O.
£145,000

Hillcrest - Clee Hill

Located in Clee Hill Village, in a cul de sac position, this refurbished and detached Three Bedroom Bungalow enjoys an elevated position with wide-spanning views to distant countryside. With oil fired Central Heating and double glazing. Energy rating E

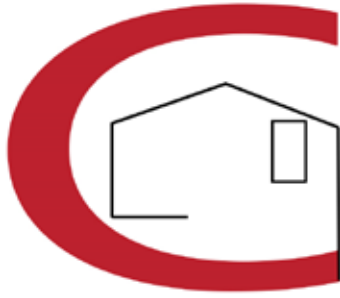
NEW



O.I.R.O.
£159,950

44 Teme St. Tenbury Wells Worcs WR15 8AA
Tel: 01584 811999 Fax: 01584 819464
email: tenbury@mccartneys.co.uk

38 High St. Cleobury Mortimer Worcs DY14 8DQ
Tel: 01299 270301 Fax: 01299 270411
email: cleobury@mccartneys.co.uk



Chris Stokes
**Roofing &
Building**

www.proroofer.co.uk
tel: 01584 890069
mob: 07853 461290

TDC CARPENTRY SERVICES

- Fully insured qualified professional
- Excellent workmanship and quality customer care
- From hanging doors, fitting kitchens to bespoke projects

Tim Clare - 01299 270568 / 07890 519980

Paul Harding



Tree Services

- Tree surgery and felling
 - Woodland thinning & maintenance
 - Hedge trimming & grass cutting
 - Supplier of hardwood logs, kindling and garden bark
 - NPTC certified fully insured. Domestic and commercial work undertaken.
- Tel 01584 890 993 Mob 07970 878 224



Aspire
**Make an appointment
with Style!**
01299 271026
www.aspire-gowns.co.uk



Evening/prom/weddings/races/parties/daywear/cruises/hats

Clarion Coppers With PCSO Nick Morris



The reported crimes which may be important to the public are as follows. To view totals of all crimes for any area, log on to www.police.uk

A vacant farmhouse in Kinlet was broken into on May 22nd, when furniture and a wood-burning stove were stolen. A failed attempt to break into a parked car in Oak Tree Close, Burford occurred overnight on May 22nd/23rd; the passenger side door lock was damaged. Two 40" plasma televisions, a cricket bat and bag plus a substantial amount of alcohol were stolen during a burglary at Penlu Sports Club, Burford overnight on May 23rd/24th. There was an attempted burglary at a house in Milson sometime between early evening on May 24th and the evening of May 25th; minor damage was caused to the front door. A catalytic converter was stolen from a car parked on the roadside in Whitcomb's Orchard during the night of May 26th/27th. A hydraulic breaker worth £4000 which belonged to a building construction company was stolen from Kerry Ingredients, Boraston Lane, Burford at 8:00pm on May 25th, although it had been situated in a secure fenced and gated compound. Criminal damage to a building took place between 10:30am on June 13th and 6:30pm on June 14th at a farmhouse in Far Forest. Black spray paint had been used to write, 'for sale' several times on the white painted walls. It was estimated that it would cost £1000 to make good the damage. CCTV cameras worth £500 were stolen from Six Ashes Riding Centre sometime between the evening of June 13th and the morning of June 19th. No attempt had been made to enter the buildings. At mid-morning on May 29th a person walking her dog was involved in an unpleasant incident with an unaccompanied dog which had escaped from its home. The loose dog had an altercation with the other dog, which was on a lead, and caused the owner of this dog to fall and sustain minor injuries. It also caused puncture wounds to this dog resulting in a £125 vet's bill. The owner of the escaped dog is known and the matter is being dealt with by police.

Most dog owners are aware of their responsibilities and of the need to keep their dogs under control, but sometimes they do escape and roam loose. When this happens, dog owners should take measures to ensure that it doesn't happen again. This is especially important when large or aggressive and potentially dangerous dogs are involved. The law states that if a dog is dangerously out of control in any place, public or private, the owner and/or the person in charge of the dog, is guilty of an offence. (Though if the private place is a dwelling an offence does not occur if a person enters as a trespasser, e.g. a burglar!). If an offence has occurred, the offending dog may be ordered by the court to be destroyed. Owners of dogs are guilty of an offence if their dogs worry livestock on any agricultural land, and they are liable for the damage. So, dog owners should always be conscientious and secure their dogs so that the risk of escape is kept to a minimum. Anyone who walks their dog off a lead should be mindful of the risk of the dog, even if it's 'a great softie', taking umbrage to another innocent dog, which may be on a lead, thus causing problems.

It's astounding that after all the publicity and warnings, many drivers still use their mobile phones when they're driving. The risk should be blatantly obvious, but are they too stupid to see the dangers, or so arrogant that they think it poses no danger because they are so clever? Most are probably nice, ordinary people who just cannot resist answering their phone when it rings, even though they know they shouldn't. Any driver who does this risks getting a fine. A friend of mine may easily have been killed a couple of years ago when such an idiot of a driver was oblivious to her waiting to turn right, and so ploughed into her car. It was proved that the driver of this van was texting on his mobile phone whilst also driving very fast. He was dealt with appropriately in court for the offences, though not sufficiently in my view.

Nick Morris



Do you suffer discomfort from:

- Corns •Callus/Dry skin •Thickened nails
- Verrucas •Athlete's foot •Ingrowing toe nail
- Being unable to cut your own nails

For professional treatment of foot related problems at my surgery, your workplace or in the comfort of your home

Contact IRENA
01299 841277
07795 958186

Also provide:

- Complete foothealth check •Medical pedicure
 - Foot massage •Evening and weekened treatment available
 - Free Vascular check of the foot
- 20 years experience

The Old Farm House, Button Bridge, Kinlet
DY12 3AW •email: hessins@gmail.com
Irena s.a.c.dip.(Dist). f.h.p.p. n.c.f.e. r.f.h.p.



Teme Valley Computers

Serving your home and small business computing needs

Computer Repair



Onsite Service

No callout fee

My Services include

- Troubleshooting problems
- Networks, wireless and wired
- Data recovery
- Virus / spyware prevention and removal
- Security setup / password recovery
- Backup services
- New System setup
- Child safety setup
- System upgrades / housekeeping
- Remote support 24/7
- Software setup and interation



Small Business IT Support - rural business

Designed for the smaller company that does not have dedicated IT support but needs someone on-call to provide that professional support level that ensures your business is always able to respond to its clients.

- Computer setup, configuration and maintenance.
- Networking (Wifi & Cabled) setup and support
- Printer setup and maintenance
- Continuity, backup and recovery services
- Business Process Reengineering
- Onsite and remote support
- Onsite training
- Website design and support
- Surveillance systems
- Technology integration



01299 271571 mark@temevalleycomputers.co.uk 07980 488892

www.temevalleycomputers.co.uk



BLOCK ARCHITECTS

Clee View, Bezeney Wood, Clebury Mortimer, Kidderminster, Worcs

Whether it is a new build project, conversion or extension we provide creative and sustainable architectural design solutions from sketch design to completion

If you require assistance or advice on any building or planning related matter, please feel free to call me



Tom Rogers

BA(Hons) Arch PG(Dip) RIBA

T 07612 198 967

E tom@b3a.co.uk

W www.b3a.co.uk

Firewood

Seasoned logs, barn dried & ready to burn.

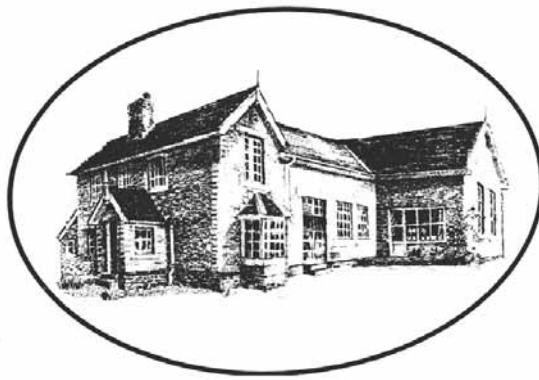
Free local delivery -01584 890993 or 07970878224

Various size loads available



Paul Harding Tree Services





Bayton C of E Primary School, where our mission is
BE THE BEST THAT YOU CAN BE!

The Year 2 children at Bayton C of E Primary School have recently enjoyed a great day at Ninneveh Ridge Care Farm. After walking the downhill mile to the farm from school, the children were welcomed by farm owner, Pippa Bannister (a parent of two of our former pupils). Pippa explained how they grow crops on the farm not just for human consumption but to feed their own livestock which includes cattle, pigs, goats and sheep. Pippa then went on to explain the benefits of this not just in terms of the farm's pocket but also in terms of environmental impact.

After a tour of the farm given by Pippa's team including son, Max, where children groomed ponies, petted rabbits and guinea pigs and visited the pigs and goats, the children helped collect eggs, and check that the chickens had plenty of water and shelter from the mid-day sun.

A picnic lunch followed a musical interlude and the children spent the afternoon painting two planters - one of which will be raffled off to raise some much needed funds for Ninneveh Farm - and making elderflower cordial with elderflowers picked that very morning.

Whilst there the children met children and young adults from a school for children and young adults with special needs who regularly visit the farm.

It was a fabulous day for all our year 2 children who returned to school tired, filthy but smiling, despite the mile uphill journey back!

E.PURSLOW & SON LTD

Stone, Gravel, Cement Supplies
Approved Coal Merchant
Calor Gas Stockist
Tarmacadam Specialists
Car Parks and Driveways Constructed
01299 270314

Health Professional
Registered Chiropodist



Janet Manley

MSSCh. MBChA
BSYA(reflex) Reiki Master

Specialist in Reflexology & Reiki Healing

Cleobury Mortimer based **01299 272841**
Home visits 15 mile radius **07805 268439**

CLEOBURY MORTIMER PARISH HALL

Church Street. Cleobury Mortimer

A FINE FACILITY, OWNED BY THE COMMUNITY AND
RUN BY VOLUNTEERS WHO HAVE IMPROVED THE
AMENITIES TO MAKE WHAT WAS 'THE ODDFELLOWS
HALL' A MODERN PLACE TO BE PROUD OF.

TO BOOK THE HALL, PLEASE CONTACT DAVE ON 01299 271070

THE TOWN'S BEST VALUE VENUE

We Gleam

We Gleam is a high-quality well-established carpet & upholstery cleaning service in the Wyre Forest area, for both **domestic** and **commercial customers**.

We use only the most advanced, quick-drying soil extractors. If you've got a stubborn, unsightly stain on your carpet or upholstery then call in the **We Gleam** specialists.

- ✓ Local family-run business
- ✓ Fully trained with years of experience
- ✓ Stainshield treatments available
- ✓ We move all furniture
- ✓ Hundreds of satisfied customers
- ✓ Commercial work undertaken



Call Pete 07961 712 683

The Farming Page - Rachel Robinson at Mawley Town Farm welcomes the summer sun.

As usual, it's all go at Mawley Town Farm. The dairy is in full swing as cream orders go through the roof during the fruit season....but then who can resist local strawberries with a helping of double cream?

We are busy with the second cut of grass silage and have been haymaking during this lovely dry weather. The cows are milking well, and when the conditions allow they are let out to graze. The barley is ripening and will be ready to harvest in July if this dry weather continues.

In my last farming page I was eagerly awaiting the arrival of piglets and I am delighted to report that we had litters of 7 and 13! Some have already been weaned and sold on to farming friends and others will stay here throughout the summer.

As we still have our 'bTB free' status, we are halter training some calves to take to Burwarton Show in August. It takes many weeks of patience and gentle handling to get them used to being lead and ready for the show ring, and it is also good experience for their young handlers. At the show we will

also have our regular Mawley Milk stand at the Village Green, so please be sure to pay us a visit. All the profits raised from the stand (that is run by volunteers) are donated to charity Send a Cow, which David and Margaret Robinson were involved in from its early stages. The principles of the charity is very much 'a hand up not a hand out', as it works with African families providing them with livestock, seeds and training to grow and sell their own produce to provide money to feed their families, educate their children and lead more fulfilled lives. Families supported by Send a Cow pass on young livestock and seeds to other families, building stronger communities and developing skills, confidence and self respect. More information about the charity can be found at www.sendacow.org.uk

As always regular updates about the farm can be found on our facebook page Facebook/Mawleytownfarm, in the meantime I wish you a happy, sunny summer!

Rachel



Red Kite Pest Control

&

Wildlife Management

Combining Tradition and Innovation

For all your local Pest Control requirements ~ BPCA and NPTA Qualified ~ NPTA Member
Humane, Environmentally responsible methods
Individual Treatments ~ Flexible Contracts

All Insect pests ~ All Rodent pests ~ All Wildlife pests

Free Advice ~ Free Initial Survey ~ Free no obligation Quotations
Specialised Trapping Service ~ Pest Prevention ~ Proofing ~ Cleansing ~ Decontamination ~ Disinfection

Telephone **Andy Staples on: 07977 044987 / 01886 832730**



THE IRON LADY

JEAN BASHAM – COMPLETE LAUNDRY AND IRONING SERVICE
“FROM DIRTY AND MESSED TO CLEAN AND PRESSED”

- I offer a friendly and reliable service right on your doorstep
- No job too big or small – anything from one single item to B&Bs and hotels
- Established for 15 years, and still the **LOWEST RATES** and **BEST SERVICE** in the area
- Large capacity machines mean I can service quilts, curtains, sleeping bags, tablecloths and other large, heavy-duty items



- Now offering a repairs and alterations service too
- NEW Specialist stain remover service now available

CALL 01299 271 546 OR 077920 813 774
EMAIL JEANTHEIRONLADY@GMAIL.COM



07971 361901 or 01299 832484

Complete Bathroom Installations
Bathroom Refurbishment or Repairs
Wet Rooms
Professional Wall and Floor Tiling



For a quality and guaranteed service, call Stuart for a free quote
Highly Recommended / References available - see my reviews on www.freeindex.co.uk

FOR THE BATHROOM YOU DESERVE!

BoomeranG
of Cleobury Mortimer
private hire travel

- Friendly, reliable service
- Local & long distances
- Fully council licensed (up to 12 passengers)
- Airport transfers
- Courier service
- All occasions catered for

Tel: 01299 271257, Mob: 07411 142755, Email: stuart.boomerang@yahoo.co.uk



JOHN VAIL

Plumbing, heating and bathrooms
Installation of boilers, cookers and gas fires
In homes, park homes and caravans
Boiler servicing and landlords' certificates

GAS LPG OIL
Gas Safe and OFTEC registered
07971 624804 01584 890946
johnvail123@btinternet.com



Clarion Clippings - The Local News

CRIME REDUCTION ACTION

Responding to suggestions of an increase in crime in the Cleobury area, a group met in the Market Hall and after some discussion have formed Cleobury Crime Reduction. Its aim is to highlight what we can all do to combat both crime and anti social behaviour. It was agreed that the Parish Council would be represented but will not run or dominate the group and its steering committee. There will be a drive to recruit support from within the community, to make people more aware of the measures we can all take to reduce crime. There is a commitment by West Mercia Police, the County and Parish Councils to the idea and the town's schools, youth workers, Cleobury Country and a list of others will be invited to contribute.

Getting involved will be what this is all about and as soon as we have more details we'll keep you informed. Expect to see a website in action and work done to explain what we can all do to make the town safer. The contact at this early stage is Parish Clerk

Matt Sheehan on CM 271154 in office hours.

NEWS FROM THE BRITISH LEGION

In March Culture Secretary Maria Miller announced that every household in Britain will be asked to turn out their lights from 10.00 to 11.00pm on Monday August 4th, to mark the centenary of the start of the First World War.

Germany declared war on France, and invaded Belgium on August 3rd. That evening in London, Foreign Secretary Sir Edward Grey gazed out of his window at the Foreign Office as the lamps were being lit on the Mall. He turned to a friend and made his now famous remark: "The lamps are going out all over Europe; we shall not see them lit again in our lifetime."

Organisers are hailing the planned switch-off as "one of the most dramatic UK-wide events ever organised" in which "people from all four nations will be invited to turn off their lights and to replace them with one single light to remember a day that changed the world forever".

The Cleobury Mortimer branch of the Legion will

also be marking the centenary with a parade and church service at 3.00 on August 3rd, and the publication of a booklet containing details of the lives of all the Great War casualties named on Cleobury Mortimer's war memorial. *Mark Baldwin*

MOFFATS ATHLETIC SUCCESS



Lana Oluwayemi shows his winning shot putt style.

Moffats School brought home Gold and Silver medals from the Independent Schools National Athletics Championships, held at Birmingham's Alexandra Stadium in June.

Lana Oluwayemi (11) was awarded Gold in the Year Six Boys' shot competition and Joshua Umeh (9), Silver in the Year Four boys' 60 metres sprint.



MARCHES
PEST CONTROL

Pest control and wildlife management
Domestic - Commercial - Agricultural

Geoff Jordan

BPCA Qualified for all insects, rodents and wildlife

Mobile: 07971 866564

Email: info@marchespestcontrol.co.uk

Web: www.marchespestcontrol.co.uk

We cover: Cleobury Mortimer, Ludlow, Tenbury Wells, Leominster, Kidderminster, Bewdley, Bridgnorth, Worcester and surrounding areas



Cleobury Mortimer Primary School

We are a school with strong local community links

OFSTED SAYS:

- Highly committed leaders and managers
- Pupils achieve well because they are well taught and have positive attitudes to learning
- Pupils enjoy lessons, behave well and say learning is fun
- Good care, guidance and support provided for individuals
- Strong team of staff and governors
- Exciting topics
- High proportion of pupils take part in extra curricular activities

CONTACT DETAILS

Cleobury Mortimer Primary School

Love Lane, Cleobury Mortimer, Nr Kidderminster,
Shropshire, DY14 8PE

Tel: 01299 270313

Email: admin.cleoburymortimer@shropshirelg.net

Website: cleoburymortimerprimaryschool.ethink.org.uk

Clarion Clippings - The Local News

THE MEDICAL CENTRE

Nearly a month since we moved to the new Medical Centre; a great improvement.

Recently the government have asked primary care to carry out two projects. The first is to give patients over the age of 75 a designated GP. For administration purposes we are formalising this and will be allocating everyone over 75 with a named 'usual GP,' stated on the right of your prescription. Allocation will be shared between all doctors. This doesn't affect your right to see any doctor, as we like to maintain a continuing relationship where possible.

The second proposal is to generate a register of patients who may benefit from a more proactive GP approach. This will include specific appointments to discuss a patient's future needs and preferences around hospital admissions and long term treatments. The government intend to target the most vulnerable patients, prone to avoidable admissions. Informally we already have a register of such patients and their carers, to help us prevent crisis situations where possible. In the coming

months you may receive a letter relating to this project, although the numbers involved will necessitate taking a gradual approach.

CLEOBURY W.I.

At our June meeting we heard all about the training of a guide dog, and how invaluable they are to their owner, allowing them to go about their business independently, coping with train and bus travel. We met Victor, a very handsome and patient black labrador and his owner, and heard amusing anecdotes of their activities.

Our next meeting on Tuesday July 8th, in the Parish Hall at 7.30, is entitled "decorative rags", from rugs down to small items such as brooches. All are welcome, come along and see what else we can do with "rags"

Gillian Senior

A BIG BROWNIE SLEEPOVER

The Parish Hall in Cleobury was home to 35 girls for the night on Friday June 13th (!) as they celebrated 100 years of Brownies with a Big Sleepover. All the Brownies were delightful from start to finish, not only making memories for themselves and

the leaders, but they have also completed their 'Stay Away' Badges.

Thanks also go to the Leaders and Young Leaders who made it possible, Janet and David Short for their help with the Hall and BP Creative Cakes for the fantastic Big Sleepover cake enjoyed by all.



More fun is on the way, as this year Cleobury are hosting Brownie Revels – Fun on the Farm, then we end our term by inviting the Rainbows to put on their dancing shoes to join us in a Disco. Good Times and Happy Days!!

Brown Owl

SILLY BITS

'A government big enough to give you all you want is strong enough to take everything you have.' Thomas Jefferson



Tel: 01299 272 785
or 01299 271 313

THE LAMP
Bangladeshi & Indian Cuisine

15a High Street
Cleobury Mortimer
DY14 8DG

- ◆ Fully Licenced & Air Conditioned Restaurant
- ◆ Open 7 Days A week (inc. Bank Holidays) 6pm-11pm
- ◆ Free Home Delivery on all orders over £15.00 within 5miles and orders over £50.00 within 6miles.



Find us on Facebook
Lamp Inn Cleobury

The Company behind the 2013 Curry
Chef of the Year!

Wild Meadow Boarding Kennels

Give your dog a holiday



- Guaranteed Daily Walks
- Heated & Air Conditioned
- Licensed & Insured

Call Kate & Rich on 01584 890327 or 07967 491428

Opening hours: 8am-11am & 4pm-6pm

Hopton Bank, Cleobury Mortimer, DY14 0QF



www.shropshirequads.co.uk

Your local ATV specialist.



POLARIS

Phone: 07904 484 492

OSET

Email: dave@shropshirequads.co.uk

KYMCO

Amanda Horton Computer Services

Tel: 01299 269167

Email: mandhorton@gmail.com

Text: 0770 802 1478



DON'T KNOW WHERE TO START?

- Shopping
- Banking
- Researching family history
- Keeping in touch with friends and family using email, facebook, Twitter and Skype.

Are all made easier when you do it from home.

Let me come and sit with you and show you how to do all of these without fear.
Reasonable hourly rates



We control:

Insects Rodents
Mammals Birds
Electronic fly killers
supplied & fitted

Mobile: 07890 048 362

**WYRE FOREST
PEST
CONTROL
AND
WILDLIFE
MANAGEMENT**



All work guaranteed
No call out charge
Discount for O.A.P's
Free survey and quotation

Office: 01562 747 210

www.wyreforestpestcontrol.co.uk

Clarion Clippings - The Local News

WHAT A GENEROUS GESTURE

Few names will be given in this report of an uplifting experience, at the request of the landowners concerned. Let's just say that this all happened near the Worcestershire border, with a party of disadvantaged children given a special day out on a miniature rail track.



They have a sense of humour here.

The children were from Nineveh Ridge Care Farm and Pens Meadow School at Wordsley. Their parents paid £5 a head, to help the finances of Nineveh. There are up to nine engines at the track, on this occasion pulling basic carriages that the passengers sat astride. Some were very nervous and needed constant contact with a carer, but they were given a gentle short ride to make sure they were happy before taking

a journey around the bigger two kilometre loop. Smiles all round, whoops of joy and a happy feeling as they chuffed off from the station.

Down at the engine sheds, complete with miniature turntable, we talked to an engine owner. He explained that they were all volunteers, happy to run their engines on such a picturesque track and to give pleasure to others. Some of the engines had been built by their owners, others bought from companies who will build what you want. The satisfaction for an engineer to put together such an attractive working miniature must be huge.



A crowded train full of happy passengers on a great outing.

Pippa Bannister of Nineveh Ridge was in constant demand,

arranging teas and coffees before the next train journey. She did get a ride herself, with some of the helpers who hadn't been on the earlier trip. All this was going on while another happy band were putting up the stalls and marquees for the next day's village fete.

Apart from the friendly atmosphere in a wonderful rural setting and the engines that were rolled out to pull the trains, this was an object lesson in sharing a facility owned by one family but made available to others. Keeping its location secret is part of the privacy the owners have the right to expect when they are not sharing with others.



*Is this the ultimate Big Boy's Toy?
A glimpse of the engine shed.*

MARK WILLIAMS - PROFESSIONAL WILLWRITER

"A lifetime's attention to the most complex of legal issues as a retired Detective Superintendent and now a Private Client Lawyer, means **you can definitely trust Mark** to write your Will."

Wills, Lasting Powers of Attorney, Probate Support

Care Home Fee Avoidance & Funeral Plans

Standard Wills from £65 per person

Instructions taken in the comfort of your own home

T: 01299 251442 M: 07966 053887 E: mw@ambawills.co.uk

Member of the Institute of Professional Willwriters & Office of Fair Trading Approved

Wild at Heart Flowers for Your Wedding

Tel. 01299 272638



Personalised, Quirky, Colour Co-ordinated, Scented, Tieds, Wired, Modern, Strong, Delicate. Your style ! Its Your Wedding !!

Also providing :- Specialist funeral flowers and a range of natural designs to suit your affordability



Floral Gifts & Lovely Aqua Packed Hand Tieds !!
Phone Orders taken and Local Delivery Service Available.

Mobile www.wildatheartflowers.com, Shop situated at; Mawley Oak Garage, Ludlow Road, Cleobury Mortimer

CLEOBURY CHIROPRACTIC

runs the

"BACK CLASS"

every Friday 1230-1330

at Cleobury Country Centre

Gentle exercise class specifically designed for those with back or neck problems.

Only £5 per session.

Just turn up, or contact Sue Brown on 07932 00 00 28 or cleoburychiropractic@gmail.com

DOMESTIC GODDESS HOME SERVICES

I will tackle any job with care and pride!
I specialise in general household chores and de-cluttering of homes. I am very reliable.
CRB checked - References Available

**Contact Julia anytime on
07867646574 / 01299 832297.**



Cleobury Garage

**Repairs to all vehicles including motor bikes
M.O.T.s on cars, small vans & motor bikes**

Now under new management
so give Deg or Marie a ring on
01299 270 352

15b High Street,
Cleobury Mortimer.
DY14 8DG

Your local friendly Garage offering MOTs on Sat morning



Special rates
when you book MOT
& service together

The Clarion Weekly Social Calendar

Day	Time	Event	Contact	Phone	
Sun	08.30	Holy Communion, Parish Church		CM 270624	
	09.45	Parish Communion, Parish Church		CM 270624	
	09.00	Mass, St Elizabeth's, Lower Street	Canon Walsh	01584 872906	
	10.30	Cleobury Country Archers, Lacon Childe Sports Field	Lesley Burnside	CM 271374	
	10.30	New Life Church – for venue call	Derek Morris	CM 270787	
	11.00	Morning Service, Methodist Church	Rev H Roberts	01584 819649	
Mon	08.00	Kinlet Family Playgroup, Kinlet School Mon to Fri		07794 166514	
	08.00	Chorley Family Playgroup, Stottesdon School Mon to Fri	Zoe Day	01746 718769	
	09.00	Peter Rabbit Nursery, Lacon Childe School Mon to Fri	April Rogers	CM 271418	
	09.00	CM Playgroup, Primary School, Mon to Fri	Jane Preece	07816 193933	
	09.30	Morning Workout, Sports Hall	Deena	CM 271317	
	10.00	Age UK, Monday Club, St Mary's Place	Sarah Wilde	CM 272638	
	15.45	Gym Club with Ann Davis, Lacon Childe Mon & Wed	Don Carter	CM 270312	
	17.30	Cubs Meeting, Old Pump House, Church Street	Kate Pearce	07772 102986	
	18.30	Karate Club, Lacon Childe School	John Nelson	CM 879210	
	19.00	Tai Chi Class, Lacon Childe School	Rose Jacks	01584 875544	
	19.30	Rangers Meeting, Old Pump House, Church Street	Helen Smith	CM 270912	
	19.45	Bingo, CM Sports & Social Club	Alan Evans	CM 270114	
	20.00	Women's Clog Dancing Classes	Linda Small	01746 718624	
	Tue	10.00	Nippers, Moths & Tots, Methodist Hall, Church Street	Emma	CM 272959
		14.00	Friendship Club, Parish Hall, Church Street	Janet Rolston	CM 270353
15.45		Ballet Class, Lacon Childe School	Liz Broadway	CM 251246	
17.00		Sports Roundabout, Sports Hall, Love Lane		CM 271317	
17.30		Beavers Meeting, Old Pump House, Church Street	Becky Keeley	CM 271416	
18.45		Bridge Club Hopton Wafers Village Hall	Wendy Duley	CM 270562	
19.00		Bell Ringers' practice night, St Mary's Church	Liz Walker	CM 271808	
19.30		Chas Beale Dance Club, Lacon Childe School	Betty Ladek	CM 270332	
Wed		10.30	Over 50s Relaxing Exercises, Doddington Village Hall	Freda Childe	01584 891180
		16.45	Gym Club for 6 & over, Lacon Childe School	Don Carter	CM 270312
	17.15	Brownies Meeting, Old Pump House, Church Street	Rebecca Barnes	CM 272945	
	19.00	Guides Meeting, Old Pump House, Church Street	Dorothy McBride	CM 272717	
	19.00	Yoga Class with Anna, Lacon Childe School	Don Carter	CM 270312	
	19.00	Zumba Class with Emma Forni, Lacon Childe School	Emma Forni	01746 862842	
	19.30	CM Concert Brass Band practice, Parish Hall	Debbie Fowler	01562 743304	
	19.30	New Life Church prayer meeting. For venue call	Derek Morris	CM 270787	
Thu	19.45	Choir Practice, Parish Church	Philip Engleheart	CM 270627	
	09.30	Little Tiddlers, Kinlet Family Playgroup, Kinlet School	Zoe Pearson	07794 166514	
	14.00	Scrabble Club, St Mary's Place, Non residents £1.00	Jo Booton	07969 104808	
	16.45	Cleobury Comets Netball, CM Sports Centre term time	Mandy Smith	CM 271809	
	17.30	Brownies Meeting, Old Pump House, Church Street	Rebecca Barnes	CM 272945	
	19.30	Tums and Bums, Lacon Childe School	Don Carter	CM 270312	
	19.30	Adult 7-a-side Football League, CM Sports Centre	Dave Hives	CM 271317	
	20.00	Bell Inn Band rehearsal, Bell Inn, Lower Street			
	20.00	11-16s Badminton Club, CM Sports Centre		CM 271317	
	21.00	Over 16s Badminton Club, CM Sports Centre		CM 271317	
	Fri	10.00	Tiny Stots, Chorley Playgroup, Stottesdon School	Zoe Day	01746 718769
10.00		Tiny Tots, Parish Hall	Bettina Poole	CM 271868	
17.30		Rainbows Meeting, girls 5-7 years, Old Pump House	Jean Basham	07792 813774	
19.00		Scout Meeting, Old Pump House, Church Street	Chris Andrews	CM 270937	
20.00		Badminton, CM Sports Centre		01584 881359	
Sat	10.30	Junior Coaching, CM Golf Club, Wyre Common	Robert Watkins	CM 271112	

CLEOBURY MORTIMER SPORTS & SOCIAL CLUB ENTERTAINMENT PROGRAMME

Sunday 25th May - **CRUVO CARRIBEAN DAY**

Family Fun Day – Calypso Cricket Competition – Fun & Games – Beach Party Atmosphere

★★★★

Saturday 7th June - **A NIGHT OF MUSIC & COMEDY** - *Back by Popular Demand* - **BONNIE DIAMOND & COE**

★★★★

Saturday 28th June - **A NIGHT OF MUSICAL ENTERTAINMENT** *with Brilliant Duo* - **SUNSET HARMONY**

★★★★

Saturday 20th September - **COUNTRY & ROCK 'N' ROLL NIGHT** *with Alan Williams*

★★★★

Friday 17th October - **ABBA NIGHT**

Tribute to the Swedish Pop Sensation, starring SUPER TROOPERS

★★★★

Friday 12th December - **SENIOR CITIZENS PARTY**

A night of Sing-a-long music with the Brilliant entertainer MARTY ELLIOTT

PRIZE BINGO
Every Monday at 8pm

BECOMING A CLUB MEMBER

For just a small annual membership fee, you can enjoy:

- Live entertainment on your doorstep
- Discounts on tickets for entertainment
- Large Screen TV, broadcasting Sky Sports
- Hire of the facilities for private functions
- Support local charities and Sporting Clubs

Annual membership prices remain unchanged since 1996.

Membership runs from 1st April to 31st March.

Various membership options are available:

Family Membership	£5.00
Individual Membership	£3.00
Senior Citizens Membership	Single £2.00 Joint £3.00

FAMILY DISCOS



A Night of Music for all the Family
Discos start at 7.00pm

Saturday 5th April

Saturday 3rd May

Saturday 14th June

Saturday 5th July

Saturday 6th Sept

Saturday 4th Oct

Halloween Fri 31st Oct

Saturday 6th Dec

MEMBERS & GUESTS WELCOME

For further details on membership or entertainment,
please ask at the club bar or contact us on (01299) 271448



Jules ~ Jewellers & Pawnbrokers



We make, sell and buy gold and diamond jewellery
Jewellery repairs undertaken
The Gold buying Centre

Tel: 01299 272 904



DAN JONES PLUMBING

Qualified and Experienced Plumber

All types of jobs undertaken

**Specialist in complete Bathroom installations:
expert Tiling and Flooring included.**

Highly competitive rates

Phone for a free Quotation: **01299 271 356** or **07815 786 690**

Linda Iles

July In The Wyre Forest



The Spotted Flycatcher, one of the Wyre's summer inhabitants.

By July the summer is really with us. So too are the migrant birds that spend the warm months feeding and breeding here. Last month we noticed that the Spotted Flycatchers were back. I'm not very good at identifying birds so it's helpful when they give extra clues in movement and behaviour: the flycatchers perch on fence posts around the farm and dart off to chase insects, returning to the same post. We need to give these birds some help, as their numbers have been declining since the 1960s. Open grassy areas within and beside native broadleaved woodland are

the habitat they need, and it seems that the farm should be ideal because our grazing animals bring dung flies and other insects which provide food. In bad weather the birds can forage for insects among the trees. They leave it very late to breed, but I hope that by now there will be nests, complete with nestlings, in ivy-clad oak trees, in outbuildings or in open-fronted nest boxes. Some pairs may be able to rear second broods before setting off back to southern Africa in the autumn.

We recently came across a very hairy caterpillar (possibly very hungry too) advancing across the doormat. It turned out to be a Drinker moth, the name being earned by the larva's knack of drinking dew from the rough grasses on which it feeds. You may have seen the long, papery cocoons of the pupae attached to grass stems too. I was interested to

read the next day that the Cuckoo is one of the few bird predators that isn't put off by such hairiness, nor the distastefulness of some caterpillars such as Cinnabar moth and Large White butterfly. The Cuckoo, having largely done its dirty work in the nests of the host birds by now, is more or less silent but will stay around for a month or two longer.

On July 3rd Forest Friends will be having a Teddy Bear's Picnic for under 5s and their carers. They will meet at 10.00am outside the Forest Café at Callow Hill. The cost is £3 per child, and £1 for participating siblings. Bring your teddy and picnic! If you're a regular user of the Forestry Commission's car park you would do well to get a Discovery Pass which will cost £40 for a year's parking. Visit www.forestry.gov.uk/pass for more info and to buy.

Linda Iles

KINLET C OF E PRIMARY SCHOOL

Preparing for the future in a caring Environment

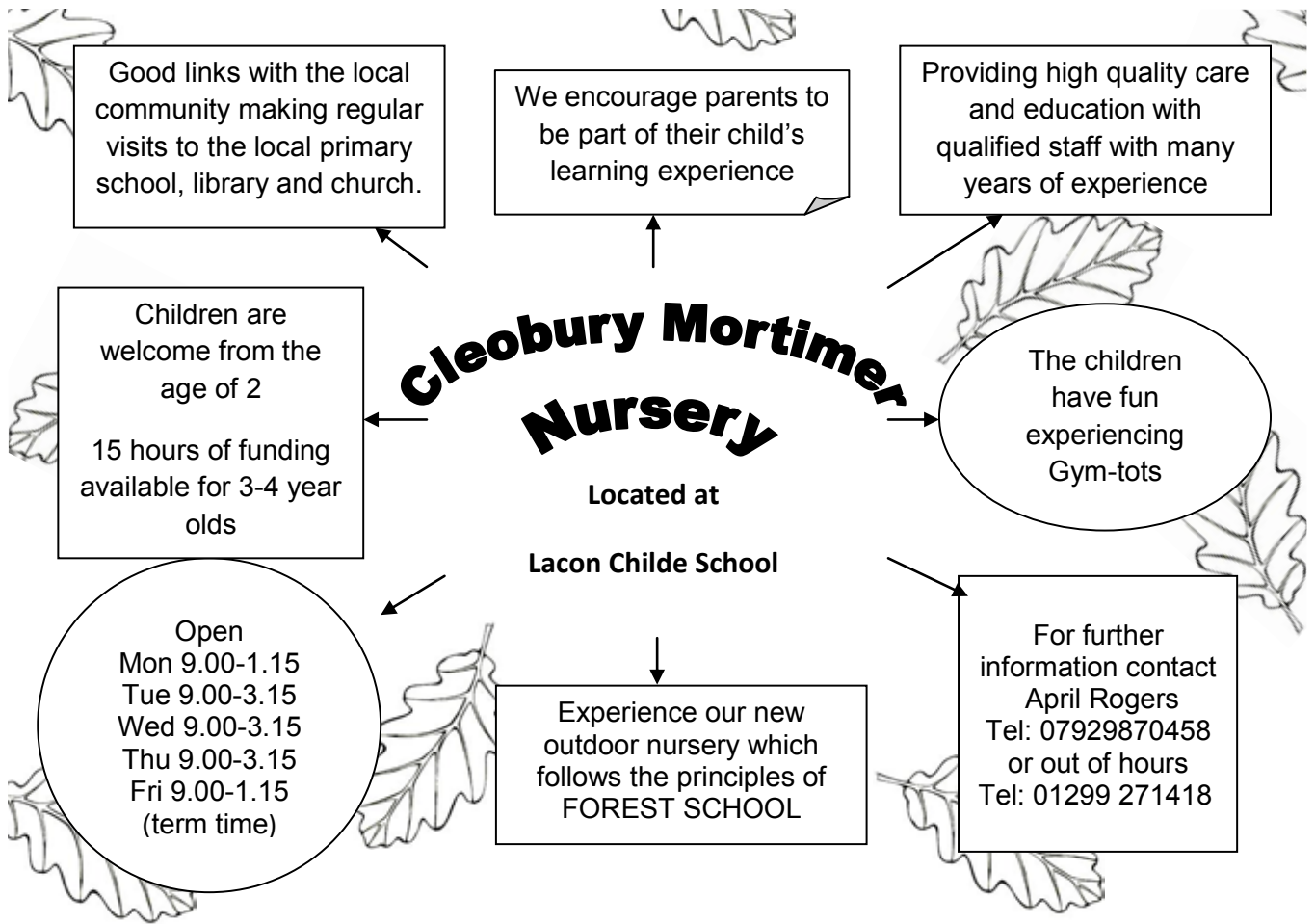


Large field and playground
Caring Ethos

admin@kinlet.shropshire.sch.uk
Telephone: 01299 841210

Broad and balanced curriculum
Breakfast and Afterschool Clubs

www.kinlet.shropshire.sch.uk



“The days that make us happy make us wise”
John Masefield

Moffats
Preparatory school for children aged 3 to 13
*Nursery Funding available
Call now to arrange a visit*

01299 841230 • moffats.co.uk

Kinlet Hall • DY12 3AY On the B4363, 5 minutes from Cleobury Mortimer

ALI Pass Driving School

You never forget the day you

Pass your driving test

Introductory lesson free!

Your local driving Instructor 0789 67 41041

Clarion Clippings - The Local News

STOTTESDON AND CHORLEY'S OPEN GARDENS WEEKEND

Let's start with an apology. To all those whose gardens in Chorley were open, but were not visited by the Clarion. Only one excuse: we ran out of time. Which tells you a lot about this weekend and the opportunity to look in on places seldom seen.

We started with a review of the best decorated pot with a horsey theme and the editor had to choose the Most Outrageous. The best presented was Going for Gold, but the Most Outrageous was a Shergar memorial with dog meat tins included. What an outrageous insult to a great thoroughbred.



"Going for Gold" was a great idea, but not outrageous.

Just a short walk down the main street, teas were on offer behind the old pub. And on the old bowling green stood a horse that looked real from the road. It wasn't.



This was Camilla, crafted by Alison Hasten of Bewdley Willow, who we are told grows her own willow for this stunning work. She's talking about her art to Stottesdon W.I. on the 16th of this month.

All down the road through the village people were walking to the next garden on offer, following the handy little map, while children scoured for signs of the Chinese calendar in their own competition.

For the first time, we walked to the farthest outpost of the show at Moon House, to find a garden with lots of hidden delights and quiet places to sit and relax. It was a riot of colour and texture with a bird box that matched the silver birch where it hung.....



and a mysterious little bird watching over the pond.....



We chatted to David and Carol Boulwood and asked

what made them move from near London. "London" was the simple answer.

Tina and David King's garden was another wander through unexpected vistas with a fine extension to the house just finished. And around the corner gently steaming stood a 1918 Ruston Bucyrus traction engine:



It was Pete and Lily Rose Griffiths' contribution to the day, with baked potatoes in foil keeping warm on the boiler:



This is a very active steam veteran with period accessories like the mill they can attach at shows and grind corn to make flour. Which is then baked in the boiler to make bread that is a favourite with other steam fans.

What was planned as two hours quickly doubled as time flew. It does at gentle, friendly events like this. Wonderful.

Cross House Arts

Picture Framing Gallery, Mamble

Opening Times

Wed. to Sat.
1:00pm - 4:00pm

**Frames By
Design Ltd**

Now Open: Mon to Fri. 9 to 5

Unit 6A, Old Station Business Park,
Bridgnorth Rd,
Cleobury Mortimer
01299 271600 (Daytime only)

**Ring George or
Dean anytime
01299 832616**



PROCEDURES AND SERVICES OFFERED INCLUDE:

- Emergency Treatment
- Lameness Investigations
- Castrations
- Passport and Microchips
- Vaccinations
- Reproductive Services
- Pre-Purchase Examinations
- Dental Services
- Poor Performance Investigations

BINDEQUINE
VETERINARY PRACTICE



Find us on Facebook

Tel: 01746 862873 (24 hrs)
email: vets@bindequinevets.com
www.bindequinevets.com



Professional Dog Grooming Jackie Beddoe

Tenbury Road, Clee Hill, Ludlow, SY8 3NE

Tel: 01584 890 532

Mobile: 07891 887 578

Aches & pains? Lack of energy? Stressed out? Feeling down? Trouble Sleeping?



Why not enjoy the amazing benefits and complete sense of wellbeing that regular Holistic Therapy Treatments such as Reflexology, Reiki, Aromatherapy, Indian Head Massage, Sports/Remedial Massage, Hot Stone Massage & Crystal Therapy can bring.



With treatments starting at only £20, why just survive – when you can absolutely **THRIVE?**



Louise has worked in the health & wellbeing industry for the last 16 years and is an experienced therapist based at Shirley's Hairdressers every Friday. Louise delivers bespoke, effective treatments tailored to your specific needs. For more information or to book an appointment please contact

Louise Brown-Knott, F.F.H.T. Tel: 07932 551007
Holistic Health, Therapy & Training

Do you need a boost? Why not indulge yourself with a **FREE** Hand, Foot or Facial treatment to demonstrate to you the power of Forever Living Products? To book please call the number above.

www.louisebrownknott.co.uk

Clarion Clippings - The Local News



TWO LIBRARY SPEAKERS THIS MONTH

The Library hosts two speakers this month, as the new committee at the Friends develops the activities programme. This Wednesday, the 2nd, sees Chris Wardle back in England from his work in Laos. And he has agreed to take a break from visiting family to talk about writing and publishing two very readable and grin-inducing books. Reviewed in last month's 'Clarion', they feature ambitious Midlander Vincent Crow and his climb towards the top of the pile. Just what that pile consists of you'll have to read the book or listen to Chris to find out.

He's due to start talking at 7.00, in the Library and admission is free. We hope he'll have some copies to sell and sign, but as he's not a greedy sort of chap, we cannot

guarantee that will be the case. We can tell you that he's an amusing man.

Much more local is Ben Smith, who'll be here on Wednesday the 23rd to talk and answer questions about his work on local flora. This fills three A4 size volumes, on loan to the library as an information source. The product of seven years work, they come with full colour illustrations and details of each plant's origin and local location. It started out as a record to help local walkers identify the flowers they saw as they roamed the local paths and has now grown to become the standard record.

Ben will start his presentation at 7.00.

**AND NOW A VERY
DIFFERENT BOOK...**
"Mister Bob, the Life and Times of Bob Gerard" by Peter Vale, Graham Gauld and Philip Porter.

This beautifully presented book is two-in-one. A coffee table item with its lavish range of over 200 motor racing pictures on good quality paper, and the only proper history of one of Britain's outstanding racers whose competition career spread from the 1930s through to his last race in 1961.

Bob Gerard was a Leicester lad whose family's business interests covered a soap factory and a thriving garage. From an early age young Bob was racing, almost always in British cars, and with a great deal of success. He was never as famous as Stirling Moss or Mike Hawthorn, but he beat both of them on occasions.

This is also something of a social history, covering racing when it was a hobby for the keen enthusiast more than the big business operations of today. Gerard ran a very professional team by the standards of the 40s and 50s, and would call upon the laboratory of the family soap factory to mix up some chemical fuels other drivers had no access to. The rules then allowed such things.

Local man Peter Vale was Bob's cousin and is handling sales of the book, well priced for such a high quality product at £40. The period photos come from some of the best motor press photographers of the period, including Klemantaski. You can order your copy or read more about this fine piece of historic record on www.bobgerard.net. It comes recommended.

Lisa Cotgrave

Painting- Decorating-Property Services

Painting, Wallpaper Hanging, Tiling, Flat Pack Furniture Assembly

& All those other little jobs you never get time to do.

Friendly Reliable Service

Special Rates for OAPs

Call Lisa On 07875 392313

CARROT TOPS

YOUR LOCAL SHOP FOR FRESH FRUIT, VEGETABLES, FISH & MUCH, MUCH, MORE.
ALL LOCALLY SOURCED WHERE POSSIBLE, REGULAR FRUIT & VEG BOX ORDERS TAKEN
DELIVERY IS FREE FOR ORDERS OVER £10.00

OPEN SEVEN DAYS A WEEK – MONDAY - FRIDAY 8.30AM - 5.00PM

SATURDAY 8.30AM - 3.00PM & SUNDAY 9.30AM - 12.30PM

COME & SEE US @ 28 HIGH STREET, CLEOBURY MORTIMER

OR CALL JULIE ON 01299 272886 DURING OPENING HOURS



TURNERS GATES



All types of wooden gates made and installed

Fencing and timber products

Bespoke and standard gates made to suit all budgets in hardwood or softwood

All types of fencing supplied and erected and bespoke timber products

www.turnersgates.co.uk turner833@btinternet.com



Tel: 01299 270965



LACON CHILDE SCHOOL

the future begins here

Headteacher: Darren Reynolds



Lacon Childe School, Love Lane, Cleobury Mortimer, DY14 8PE

Tel. 01299 270312

email - admin@lacon-childe.org.uk

Clarion Clippings - The Local News

SEVERN HOSPICE AWARD WINNERS

It's hard to keep Severn Hospice and its excellent shops out of the news. And the Cleobury branch is something of a star performer.

At the charity's recent awards ceremony for 2014 the Cleobury branch took home two of the coveted Team Awards in the Community and Innovation categories. Their place in the community is well established and for innovation just think of those knitted mice all over the place! There's good thinking in those titles. Team Awards bring all the shop staff into the spotlight. Explains the friendly atmosphere of cooperation you get in the place.

In the shop, prominently displayed behind the cash desk, is a notice detailing another fine achievement by the charity. Every time you spend money there, they ask if you're a UK tax payer and would you like to fill in a Gift Aid declaration so that they can claim back the tax element on what you've spent. Last year that amounted to a whacking £153,299, or 20,577 hours of nursing for their patients! Brilliant.

STEPHEN SAYS FAREWELL TO ROCK Peter Stanley bids a fond farewell to the Reverend Stephen Owens

Stephen has been our vicar at Rock for 15 years and has inspired great affection throughout the benefice.

Many people, churchgoers and non-churchgoers alike, have benefited from his compassion and dedication.

Each of the four churches in the benefice have seen part of what he does, but all have been aware of how hard he has worked for us all throughout his time here.

His final service was at Rock Church on June 29th, at which a presentation was made. He and Lynne will soon be moving to their new home in Hartlebury.

Thank you, Stephen, for all you have done and our very best wishes to you and Lynne for the future.

Peter Stanley

HONOURING LOCAL INHERITANCE

We were invited to look in on an after-school class at Lacon Child's Art Department. The Year 9 students there were putting in some overtime to develop

paintings of the landscape of their choice, with some of the work of the late Walter Pullan included in the range from which to take inspiration. Pullan was a Bewdley man who loved the local countryside and painted many of its aspects; when he died his work of over 100 pictures were left for Steve Knott to use as he thought fit. Inspiration for art students? Good idea.



Quietly working and sharing after official hours.

Chloe Wilson runs this part of the school and gladly gave extra hours to coach a keen selection of boys and girls. They were working with acrylic paint, a compromise dictated by cost, though some students preferred oil or water colours. Every one of them we asked was impressed by Pullan's craftsmanship, an example to admire but not to slavishly follow.

 **Mannerly Mutts** 

Dog Behaviour, Training, Walking and Sitting

-  Behavioural Consultations
-  Training Classes for Puppies & Adults
-  One to One Training
-  Fully CRB Enhanced Checked
-  Walking, House Sitting, Home Boarding
-  Home Security

www.mannerlymutts.co.uk

jo@mannerlymutts.co.uk 01299 270514 

Tiny Stots
Informal parent
and toddler group
Fridays (term time)
10am-noon

Chorley Family Playgroup

Located
next to
Stottesdon
School



...shaping the future

Ofsted
'GOOD'
report

Highly-qualified staff providing Early Years Foundation Stage learning in a happy, safe and stimulating playgroup with a beautiful garden and outdoor play area.



Open
Mon-Fri
8am-5.30pm
(term time)
Competitive fees
Vouchers accepted
Holiday care available

Extra-curricular
activities including
yoga, dance,
craft projects, trips and
gardening to support
your child's learning
through play.

Community orientated
with strong links to
local schools.
15 hours per week
of funding available
for children over 3.

01746 718769 www.chorleyfamilyplaygroup.co.uk

Ofsted Reg. No. EY369688
Charity No. 1018755

architecture and design



a local, eco-friendly designer with over 30 years experience, offering sympathetic solutions to new homes, extensions and barn and loft conversions.

From Sketch Designs to Planning & Building Regulations Applications.

Nic Brown BArch.,

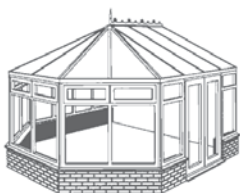
The Farm, Oretton, Cleobury Mortimer. DY14 0TA

tel: 01746 718624

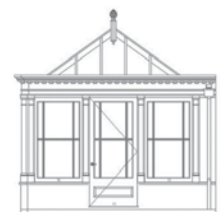
mobile: 07706 994301

e-mail: nbarchdesign@btinternet.com

SKELLERNS DOORS & WINDOWS



- UPVC Fascias & Guttering
- UPVC Windows, Doors, & Conservatories
- General home improvements
- Re-roofing & general building
- Replacement Glass
- Patio jet washing



Free No-obligation quote. FENSA registered company with years of experience

Call Mike on 01746 718188 or mobile: 07814 577739

The Old Police House, Stottesdon, Cleobury Mortimer, DY14 8UE

IN BUSINESS: CHORLEY FAMILY PLAYGROUP

Chorley Family Playgroup has the advantage of being based between two villages with a very strong community connection. Stottesdon knits together with near neighbour Chorley, sharing events and services like this one.

The Playgroup started life as a voluntary cooperation of mums in Chorley's village hall 45 years ago and proved to be a great success. In 2008 the growth of support and need for more space saw them move next door to Stottesdon's Church of England Primary School. There they share most of the impressive play area behind the buildings. The Playgroup never sit still in the search for better conditions and equipment for the children, the last grant coming from the National Lottery two years ago. It's reflected in the garden area where there are vegetables growing that will be served with the children's meals. That is supplemented by other food bought locally, but freshness is a habit the kids learn early.

Walk through the Playgroup entrance and the welcoming atmosphere hits you. The yellow walls add to it and the wall panels displaying the children's work are a reminder of the thought and care put into their days by the staff.

Zoe Day is the Nursery Manager. She moved from a large establishment where she says the emphasis was on increasing the number of children attending and the money that generated. Here in Stottesdon she found an emphasis on care and making the day a happy experience in which she and her staff can observe each child's needs and plan work specifically for them. That individual attention spreads beyond the teaching element and at Christmas every child on the nursery register had a gift chosen with their own interests in mind. Not the kind of service a parent can expect at a money-hungry box ticking operation; it comes with an emphasis on caring.

The qualifications of the staff are above the normal level. A carer needs an NVQ Level 2 qualification to get a job in a nursery, but here at the Chorley Family Playgroup they all have Level 3 or higher. Zoe herself is a quiet, warm presence with the children, but talk to her and the steel of determination within comes through. She's not a shouter, she's a firm and polite leader who thanks every member of staff for their work at the end of the day.



The day is nearly over and Zoe cuddles a younger charge while other children solve their jigsaw puzzles as they wait for mum.

The service to both parents and children has grown and the place is now open from 8.00am through to 5.30 from Monday to Friday. There's a breakfast for the early starters and care through until the child is collected; what working parents need.

This is all subject to two sources of inspection: the Ofsted that most educational facilities answer to, which has awarded them a 'Good' rating, and they work to the Early Years Foundation Stage standards. There are extras too, like yoga, dance classes, craft projects, trips out and gardening. Outdoors figures large in the day and there are boots and waterproofs for all the children to wear. Zoe admits with a grin that they do like to be in the open air.

It's an impressive place to visit and learn how thorough the approach to learning is. No wonder they grew.



CLEOBURY CHIROPRACTIC

31 High St. DY14 8DQ

07932 00 00 28



Alongside & in co-operation with conventional medicine, Cleobury Chiropractic offers a refreshingly gentle method to diagnose and treat a number of problems:

- * **BACK & NECK PAIN** * **POSTURAL PROBLEMS** * **SCIATICA**
- * **SPORTS INJURIES** * **JOINT & MUSCLE PAIN**

ALSO: * Weekly exercise class for back pain sufferers

* Corporate on-site assessment for back pain prevention

Sue Brown MA MSc DC MMCA

McTimoney Chiropractor

www.notjustaboutbackpain.com



Quercus Landscapes

Architecture, Landscape Design & Garden Design

Fully qualified **Architect** with 25 years experience providing innovative design solutions and services and fully qualified **Landscape Architect** providing professional **Garden Design** & Landscape Architectural services.

Domestic and commercial clients, no job too small, all sizes of projects considered.

For professional and friendly advice please call **07769 919 197**



T.PREECE

TIMBER BUILDINGS LTD

The Old Station Business Park - Bridgnorth Rd - Cleobury Mortimer - DY14 8SY

Custom Built Log Cabins & Timber Framed
Mobile & Permanent Homes

Garden Buildings-Home Offices-Garages-
Glamping & Shepherds Huts



01299 272801 - 07970078336 - www.tptimberbuildings.co.uk

Clarion Clippings - The Local News



There was no room for this lovely shot with our Stottesdon Open Gardens report, but we couldn't resist it. It shows Rick Weston with Duke, a trainee forestry cob who was being put through his paces on a field next to the main road and attracting a lot of admiring attention; he seems to quite admire Willow. Thanks to Clare Tibbits for the photo.

THE READING GROUP

The general opinion of June's read, 'The Misogynist' by Paul Piers Read, was that the subject was not a misogynist. More an obsessive nit-picker whose relationships therefore suffered and his more human side only emerged late in the book. Not a recommendation, more a gentle warning.

This month we have some literary red meat to chew over, in Harlan Coben's 'Caught'. It should be an interesting discussion when we meet in the Library, at 7.30 on July 21st.

'ON THE MENU'

A new name to the area, this is a range of ready-to-cook meals that Katerfresh are distributing. It's all about small sized meals prepared for older people, who prefer a range of dishes but not big quantities. The business was

started by Elizabeth Jones, who saw the problems her mother had with ready meals and decided to do something about. On The Menu is the result, offering affordable meals with low salt content and reduced fat. And some dishes, like the Gammon in Parsley Sauce with vegetables, are Gluten Free. Six main dishes, all priced at £2.79 or £2.99, and Apple Crumble or Rhubarb and Custard sweets at £1.45 and £1.25. In stock here in Cleobury Mortimer and available direct or via selected carers who can collect for you or arrange a weekly home delivery. With cooking advice in easy-to-read large print. They're a friendly lot at Katerfresh, and willing to help.

Talk to Ann or Lynne on CM 271755 for details or to order. They're at Newhouse Farm, Tenbury Road.

AN ALARMING STORY



It's rather small, but it has a very loud voice. The PIR alarm with pocket size operator.

Thefts from sheds don't make headlines, but they are very upsetting for the shed owner. You can protect yours, whether it's a storage place for garden tools and bicycles or a hideaway where you can indulge your hobby without interruption.

West Mercia Police have done a deal to purchase the small but very loud PIR alarm. It fits in your hand, weighs next to nothing and comes complete with batteries, remote on/off operator and a swivel mounting if you want to put it on a wall. It will also operate free standing and the batteries are already fitted.

It reacts to movement once it's switched on, and gives you 30 seconds to get out and close the door. If it detects any movement in the shed within seven metres (23 feet to you, grandad) the alarm siren goes off. The little monster is rated at a deafening 130 decibels, which will wake the neighbourhood. All this noise for just £10, from Cleobury Country Centre. And that's a lot cheaper than tickets to Iron Maiden!

Professional. Affordable. Local.



Electrical Installations

No matter the size, we can gladly undertake all Domestic, Commercial and Industrial installations you require.

A family run business, with over 25 years industry experience.

From period properties to agricultural solutions, we provide a professional service every time. We also do call outs and emergency work.

Renewable Energy

Protect yourself from rising energy bills by considering renewable energy.

Solar PV is the most accessible way you can save energy by producing electricity from the sun. Earn a tax free income from the electricity your system produces.

Speak to us about how renewable energy can benefit you or your business.

Whatever your query, give us a call.

T: 07971 096267 / 08450 564173

W: www.awe-services.co.uk

Two Staks, Eagle Lane, Cleobury Mortimer, Worcs. DY14 8RA



The Cleobury Clarion Local Information Page

July 2014 - Volume Twelve - Edition Four

Editor and Advertising Sales: Jim Reynolds, 4 Childe Road, Cleobury Mortimer, Shropshire DY14 8PA. Telephone: 01299 270642 Mobile: 07410 977 212

E-Mail: editor@cleoburyclarion.co.uk or uncle.jim@icloud.com

Printed by: Linda Fowler at Glint Print 01299 266657

The Clarion On The Web:www.cleoburyclarion.co.uk

The Clarion is owned and published by

Cleobury Clarion Media Limited

Collect the Clarion in Cleobury Mortimer from: Spar Grocery, M & M Baldwin, The Post Office, Cleobury Cafe, The Severn Hospice Shop, Farlow Estates, Harry Tuffin's, Carrot Tops, The Library and Simply Fresh.

Or Out in Cleobury Country at: Heath Farm Meats, **Bagginswood**; Clee Hill Post Office; Cleobury North Village Store; Clows Top Post Office; The Sun and Slipper at **Mamble**; Hopton Bank Service Station; Ludlow Library; Mawley Oak Garage; The Fighting Cocks, **Stottesdon**; The Duck Inn, **Chorley**; The Live and Let Live, **Neen Sollars**; The Eagle and Serpent, **Kinlet**; Parker Motors, **Ditton Priors** and McCartneys Estate Agents, **Tenbury Wells**.

Missed your Clarion? Cleobury Mortimer Library keeps the current month's copy on file.

THE DEADLINE FOR THE AUGUST ISSUE IS JULY 22nd

Clarion Contacts - Useful Local Telephone Numbers and Emails

CEMETERY ADMINISTRATOR - 07703 965 064 Theresa Parfitt; theresa.25016@hotmail.co.uk

CLEOBURY COUNTRY CENTRE - 01299 272300 In Love Lane. Open 09.00 to 5.00, Mon to Fri.

CITIZENS ADVICE - 08444 991100. Advisors on line 10.00 to 4.00.

CLEOBURY COMPASSIONATE COMMUNITIES (CoCo) - 01299 270018. Katja Ward is the contact; office hours 10.00 to 12.00 noon Wednesday only.

CLEOBURY MORTIMER LIBRARY - 01299 272301. Vicki Alexander is our librarian. Open 9.00 to 5.00 Monday to Friday and 10.00 to 1.00 Saturdays.

CLEOBURY MORTIMER POLICE. WPC Anne O'Leary; ann.oleary@westmercia.pnn.police.uk

CLEOBURY MORTIMER SCOUTS AND GUIDES: Iain Smith CM 271809

CRIMESTOPPERS - 0800 555 111. Free Police contact. Talk in confidence, to report any crime.

DOMESTIC VIOLENCE HELPLINE - Women's Aid, 24 Hour support: 0800 783 1359

HOME FROM HOSPITAL - 01584 878046. Help over the first weeks back home from Age UK.

JOB VACANCIES - 01299 272300. See the local list in Cleobury Country Centre.

MARKET HALL- Dorothy CM272717, 07761 976650 mobile, or dorothymcbride@cleobury.org.uk

MEDICAL CENTRE - 01299 270209. Out of surgery hours, the Shrop Doc Service.

SHROP DOC - 08444 068888. Service available evenings and weekends.

THE PHARMACY - 01299 270219. Closes for half day on Saturday. Delivers prescriptions.

NIGHTINGALE NURSING FUND - 01746 718210. Rosemary Abbiss is the contact.

PARISH COUNCIL - Clerk Matthew Sheehan is in the Market Hall from 9.00 'til 2.00, Monday to Friday. 01299 271154. The Council meets in the Market Hall on the first Monday of the month; meetings are open to the public. Website: www.cleobury.org.uk

POST OFFICE - 01299 270201. Many services in Cleobury: car tax, foreign currency, cash point

SAINT MARY'S YOUTH PROJECT - Mark Greaves 07828 116810, mark.stmarys@live.co.uk

SHROPSHIRE COUNCIL - 0345 678 9000

SOUTH SHROPSHIRE YOUTH FORUM - E-mail richard@ssyf.net.

VOLUNTARY CAR SCHEME - 01299 666119. Mrs Val Simpson is the coordinator.

WASTE DISPOSAL - 0345 678 9007. The contractor is Veolia

WATER SUPPLY EMERGENCIES - Severn Trent on 0800 783 4444.



www.mccartneys.co.uk



www.phippsandpritchard.co.uk

4 Grove Meadow - Cleobury Mortimer

A modern detached 4 bedroom property. Having been improved and updated over recent years to provide comfortable family home. Garage and gardens.
Energy Rating E



O.I.R.O.
£279,950

3 Church Barns - Silvington

A newly converted three bedroom period barn conversion having accommodation set over three floors to include entrance hallway, cloakroom, fitted kitchen, sitting room, three bedrooms, family bathroom, ensuite, additional sitting room, front and rear gardens, ample driveway. Energy Rating C



O.I.R.O.
£299,950

16 Furlongs Close - Cleobury Mortimer

This end terraced, 2 bedroomed property is ideal for first time buyers or for buy-to-let investors. Accommodation to include: living room, kitchen, conservatory, two bedrooms and family bathroom. The property benefits from gas central heating, gas fire in the living room and double glazing throughout.
Energy rating D



TO LET

£695 PCM

2 Church Mews - Tenbury Wells

A well presented two bedroom mews cottage ideally located just a short walk from the town's amenities. Benefitting from off-road parking and gas central heating. Downstairs accommodation to include: open plan living room and kitchen. Upstairs the property has two bedrooms and a family bathroom. Sorry no pets or DSS benefits. Energy rating C



TO LET

£525 PCM

44 Teme St. Tenbury Wells Worcs WR15 8AA
Tel: 01584 811999 Fax: 01584 819464
email: tenbury@mccartneys.co.uk

38 High St. Cleobury Mortimer Worcs DY14 8DQ
Tel: 01299 270301 Fax: 01299 270411
email: cleobury@mccartneys.co.uk