

# The Cleobury Clarion

## D-DAY AND THE BEACON

A quiet start to a very important day as we recalled a notable date in European history. The invasion of France by the Allied forces 80 years ago and the beginning of pushing Nazi Germany back as the freeing of the continent began.

The significance of the day was seen in the gathering on the Sports Field led by the local branch of the Royal British Legion for the memorial ceremony and the lighting of the beacon. Scores of people gathered to observe silence, witness the lighting and quietly chat before heading for home and welcome warmth. A moving demonstration of the respect for both those lost in the conflict and those who fought on to bring peace. We who are fortunate enough to live here in 2024 do show proper respect for others less lucky.

## BIG SOCIAL EVENTS

As ever, our Social Calendar fills a page. City dwellers like my family once were, come to rural areas and ask how we can fill the time when there is no obvious sign of bright lights and noise most weekends. Then they pick up this newsletter and begin to realise the truth.

July is a good example. On the 6th, Hobsons Brewery invite you to their Summer Party. No charge for admission, but you do have to book a place to make catering easier; they're on 01299 270837. If you're lucky, you'll get a chance to try the new Shed Ale, alcohol free ale aimed at Mens Sheds all over the country.

Just a mile or two up the road over the weekend of July 19th to 21st, Hopton Court will be very much alive to the Festival At The Edge. It features musicians of a wide variety, story tellers of even wider talent and poetry to make you want to just sit and listen to

the way experienced wordsmiths can move your heart.

And on top of all that, if the chance to listen to a band called Ciderhouse Rebellion and sip a little apple brew does not appeal, your soul is lost.

And the next weekend, on the 28th, will see literally hundreds of dogs descend upon Stokesay Court for the Ludlow Rotary Club Dog Day.

If you appreciate dogs, love them madly or just like them a little, you'll enjoy this blend of canines on display and humans showing them off.

There are have-a-go events like dog agility, flyball and hoppers while gun dogs can show off their ability to retrieve. Plus lots of trade and dog care stands as well as advice on the care and selection of your favourite breed. All of this event to raise funds for the Ludlow Rotary charity that supports causes through the club's grants scheme.



**CAROLE CLAYTON**  
INDEPENDENT FUNERAL CELEBRANT

 07971 543790

 [celebrant@preciousmemoriescelebrant.net](mailto:celebrant@preciousmemoriescelebrant.net)

Find us on Facebook  
[@preciousmemoriescelebrant](https://www.facebook.com/preciousmemoriescelebrant)

UK Enterprise Awards  
Funeral Celebrant of the  
year 2023 (Worcester)

Shropshire, Herefordshire &  
Worcestershire.



# Victoria Allen Funeral Services

An Independent Family Business offering a  
Personal and Professional Service

Over 25 years' Experience

Competitively Priced

Private Chapel of Rest

Golden Charter Pre-Paid Funeral Plans

Covering All Areas

Home Visits Available

## 01584 879035

24 Hour Service

8 Charlton Rise, Ludlow, Shropshire, SY8 1ND  
[www.vallenfuneralsludlow.co.uk](http://www.vallenfuneralsludlow.co.uk)  
Email: [vafs@btinternet.com](mailto:vafs@btinternet.com)



## THE CLEOBURY CLARION. JULY 2024



*The Ludlow Duck Race.  
Big crowds, small ducks,  
great fun.  
See Page 7.*



*Shropshire countryside, as  
nature intended.  
See 'Walking Through  
Meadows' on page 9.*



*Hypnowoman. Can calm  
and relax you.  
See Page 25.*

### And On Other Pages....

- |                              |                              |
|------------------------------|------------------------------|
| 5 - Dominoes Revival         | 35 - Simon in the Garden     |
| 11 - The Pudding Club        | 41 - Mrs Grumpy              |
| 13 - The Reading Group       | 44 - Wood Words              |
| 15 - New Notes on song       | 47 - Festival At The Edge    |
| 17 - Margaret Robinson       | 52 - Community Contacts      |
| 21 - July in the Wyre Forest | 55 - The Social Calendar     |
| 23 - Saint Mary's Benefice   | 56 - Let's Beat the Scammers |
| 27 - Rock Pathfinders        | 58 - Ludlow Dog Day          |
| 29 - Hobsons Summer Party    | 59 - The Town Council Report |
| 32/33 - Doddington Lodge     | 59 - Town Council Report     |

# Firewood

**Seasoned logs, barn dried & ready to burn.**

**Free local delivery -01584 890993 or 07970878224**

**Various size loads available**



**Paul Harding Tree Services**





follow us on facebook

**DRY CLEANING & LAUNDRY SERVICES**  
20 HIGH ST, CLEOBURY MORTIMER DY14 8DG  
01299 270571 / 07483 380019  
HOUSEHOLD & COMMERCIAL WORK WELCOME  
FULLY ATTENDED MONDAY TO SATURDAY 9AM-5PM

**THE PLACE TO AIR YOUR DIRTY LAUNDRY!!**

self service & full service wash/dry/fold/iron large machine for big items  
dedicated machine for pet items equestrian rug cleaning team sport kit laundry service  
professional shirt service dry cleaning service duvet/ blanket/sleeping bag washing service  
Nikwax wash and proof for outdoor clothing  
local delivery available, we specialise in hotel and B&B laundry and ironing

**CELEBRATING 10 YEARS IN BUSINESS**  
**THANK YOU TO OUR LOYAL CUSTOMERS AND THE COMMUNITY FOR THEIR SUPPORT**



## Michael Coombes Roofing & Building Maintenance.

Complete Re-roofing, Roof repairs, Pointing & Chimney repairs.  
Slabbing & Brick work  
Wall & Floor Tiling  
Painting & Decorating

Over 20 Years experience in the Cleobury area.

**Call Michael on 07854 047413**

**B Price Forestry**



Supplying kiln dried logs in 3 convenient load sizes: a bag, a pickup load or a transit/trailer load. We also stock nets of kindling.

We are Ready to Burn accredited and offer free delivery within 10 miles.

Logs are between 8-10 inches in length and are kiln dried to 20% or less moisture content.

**\*\* Summer promotion – discount on prices for orders placed between 1<sup>st</sup> June 2023 and 31<sup>st</sup> August 2023 \*\***

For prices, availability or to place an order, please contact us on

**01584 891307 or 07518 810269**

B Price Forestry, The Workshop, Bitterley, Ludlow, Shropshire, SY8 3HW



Company: B Price Forestry Ltd  
Certificate No: W5883/00001

Tele:-

**01299-272757**

# Hands on Printing

Email:-

**clickclick2@hotmail.co.uk**

Mobile **07708 587787**

All digital media printed to 6"x4" 5"x7" 8x6" 10"x8"

**CANVAS WRAPS FROM 12"x16" - 30"x 20"**

**ENLARGEMENTS FROM 12X10" TO 24X36"**

FROM PHOTO'S, DIGITAL MEDIA & 35mm SLIDES



**PASSPORT PHOTO'S ONLY £5-00  
WHILE YOU WAIT**

**MOST VIDEO FORMATS TRANSFERRED TO D.V.D.  
USB or SD cards**



INCLUDING VHS - VHSC - SONY 8 - DIGITAL 8 - Hi8 - MINI DV & BETAMAX

REEL TO REEL & CASSETTE  
AUDIO TAPES & OLD LPs TO CD



**PHOTO  
&  
VIDEO FILES  
TRANSFERRED  
FROM  
MOBILES  
TO DVD ETC.**



**Video Filming  
Service**

43, High St.  
Cleobury Mortimer.  
DY14 8DQ

**STANDARD 8 - SUPER 8 FILMS TRANSFERRED TO D.V.D.  
USB or SD cards**

DAMAGED PHOTOGRAPHS RESTORED ETC.

**BIRTHDAY AND CELEBRATION BANNERS**



**VINYL BANNERS - BUSINESS CARDS -  
SHORT RUN FLYERS  
INVITATIONS - ORDERS OF SERVICE**

**B-W OR COLOUR PHOTOCOPIES  
SELECTION OF PHOTO FRAMES**

Traditional Studio Portraits and Pet Photo's

## THE NEARLY DEAD POETS' SOCIETY

People were way and Pauline was poorly, so we had a very exclusive trio at our May meeting to talk about cats. The editor told of an injured one who recovered from a broken pelvis. Tina recalled another, taken and tended by her grandmother and David read one lovely rhyme, then followed with two selected from the works of T S Eliott. Such riches!

Other readings were from Mark Barnsley and Richard Hobin before we agreed on 'Meadows' as our June subject, finished our wine and headed homeward.

*Jim Reynolds*

## NEW FRIENDS

*We have been approached by a lady, a recent newcomer to the town, who asked us to print this wish to make social contact with ladies. All responses should address via me as editor, and will be treated in strictest confidence.*  
JR.

New friends. I am looking to meet new female friends in Cleobury Mortimer and the surrounding area. Age group 45 to 60 years.

Please email via the Clarion editor.

## CLEOBURY KITE FESTIVAL

The Kite Festival, that quiet and colourful weekend on the Lacon Childs sports field will be here again over the weekend of July 20th and 21st, Organisers Helene and

Paul of kite shop Sky Bums tell us they won't be selling, but will be treating the weekend as a fun time with fellow kite enthusiasts from all over the country. If you want to contact them for more details, they're at [kites@skybums.com](mailto:kites@skybums.com).

On the day they're easy to find. Just walk down past the school fields and if the weather's kind you'll find them floating in the sky.

## PINE MARTENS IN SHROPSHIRE

Clee Hill Wildlife Group host an evening with Stuart Edmunds of the county Pine Marten Project talking about these fascinating little animals and how to monitor evidence of them, using camera traps and tracking skills.

It's at Clee Hill village hall, starting at 7.00 at 7.00 on Tuesday July 9th. Admission free, donations welcome and tea and coffee available. Email [suzannetumnus@btinternet.com](mailto:suzannetumnus@btinternet.com) for more information.

## MRS HUGHES' PLANT SALE

Dorothy Hughes' plant sale is a well established July tradition, attracting keen gardeners and those who simply enjoy the coffee and home made cake at Coppice Gate Farm on Lye Head. All this to raise funds for the Rock and Heightingto churches.

It's on Sunday July 7th, from noon until 4.00 and in case

you don't know the local area well, Lye Head is in Bewdley at DY12 2UY. A warm welcome awaits you.

## DOMINOES REVIVAL

Domino evenings are 'spot on'.

The opening two events for the Cleobury Mortimer Dominoes Revival monthly knockout proved to be a success with good attendance on both evenings.

Tony Bullard upset relatives and won the final on the inaugural evening, beating brother-in-law Ivor Booton. Roger Gittens was June's victor after a close game in the final with Paul Davidson. Lots of other games were played in addition to the knock-out on both nights.

Thanks to Roger Gittens, former landlord at The Bell Inn, who came up trumps with boards and dominoes. Zol from The Stables provided dominoes and the hospitality of Dimesy at The Lion, who fed the masses.

The next evening is on Wednesday July 3rd at The Lion, at 8.00pm. All are welcome, young, old, experienced and learners. Please enter your name on the sheet in the pub, or email [dominoes@cleoburygmail.com](mailto:dominoes@cleoburygmail.com)

*Phil Campion*



## Find Your Smile at Cleobury Dental Practice

Whether you're looking for dental implants to replace missing teeth, invisible braces for a straighter smile, boosting your confidence with teeth whitening or a dedicated dentist for your regular care, you can find it all here in the heart of historic Cleobury Mortimer.

- Modern, state of the art facilities and the latest dental technology
- Free car parking adjacent to the practice and step-free access to our dentists' surgeries
- Enjoy private dental care from just 47p per day with our membership plans
- Highly experienced in helping those with dental phobias

### Services Provided

- Tooth-Coloured (White) Fillings
- Sedation for Anxious Patients
- Teeth Straightening with Braces and Invisalign
- Dental Implants (Replacement of Missing Teeth)
- Emergency Appointments Slots Available (first come first served)
- Hygienist Services
- Private and NHS Care (NHS subject to capacity)

### Opening Hours

Mon, Tue, Wed and Fri **9am-5pm**

Thu **9am-7pm**

Saturdays **by appointment only**

**Tel: 01299 271 747**

**[www.cleoburydental.co.uk](http://www.cleoburydental.co.uk)**

## CLEOBURY VOLLEYBALL

This season, all three Teams of Cleobury Mortimer Volleyball Club finished top of their divisions in the West Midlands Volleyball Association League. The Ladies 1st Team have also made it to the final of the West Midlands Cup and will face Birmingham City later this summer. It's been a great season for the juniors too, who have been competing in the Summer League against other local teams Stourbridge, Wombourne and Tettenhall.

Five members of our juniors represented West Midlands at the Inter-Regional Championships back in May: Erin Hickman, Dan Kendall, Ruby Jones, Fred Carrick and Harry Hall. And Cleobury's head coach Carl Brookes and Ladies 1 player Sip Gallagher attended the event as West Midland coaches.

A superb season for CMVC. Celebrations commence at our presentation evening, followed by a DJ and disco at Cleobury Mortimer Social Club, Saturday 13th July. See you there for some celebratory drinks!

*Sip Gallagher*

## THE LUDLOW DUCK RACE

On Bank Holiday Monday some 2,000 bright yellow ducks swam down the River Teme at Ludlow. It wasn't the result of some strange ornithological occurrence. The ducks were plastic and the event was the Duck Races organised by Ludlow Rotary Club in aid of 'Ludlow Rotary Cares', the club's community grants scheme.



All told there were four races with 500 ducks released each time from Dinham Wier to float under Dinham Bridge to the winning line a hundred yards downstream. Many had been sponsored by members of the public who turned out in large numbers to cheer on their ducks from the banks of the river and from across the bridge. The winning duck in each race produced a £100 prize for the successful sponsor.

Speaking after the event, Ray Cork of Ludlow Rotary explained "This was the first time that we had run such an event, and it was really good that so many people turned out to cheer it on and helped to raise almost £2,500 for our grants scheme. We are especially grateful to all who assisted on the day not least the Friends of Whitcliffe Common, Hereford Rotary Club and Hereford Sea Scouts."

Ludlow Rotary Club hope that this will now be an annual event and are already beginning to plan for next year which, they say, will be 'bigger and better'.

*Barry Forrester*

## CLOWS TOP GARDENING CLUB

This month we are visiting Warndon Court Gardens, just off Junction 6 of M5.

The owners have been developing the gardens for the last 12 years; their aim is to match the elegance of the historic house and combine this with a family garden. The soil is heavy clay, and they are trying to achieve all year round interest. Roses do well, hence the timing of the visit for July.

Topiary is also featured, we are invited to look out for the dragon presently resembling a rabbit!

Meet at 6pm at the Victory Hall to share cars. To book, or for more information, ring Elva on 01299 832288.

See you on July 24th

*Judith Lawson*

## MELVILLE CHAPEL PROGRESS

Our work at Melville is coming along and we are still avidly fundraising to pay for the renovation.

We finished our Soup Lunch season with an Afternoon Tea at Hopton Bank Chapel. Our thanks go them for hosting us for our last two sessions.

This month we have a Summer Garden Party at Cleeton Cottage, Cleeton Saint Mary, DY14 0QU. Entry is free and we will be serving a traditional afternoon tea, with payment by donation to the repair fund. All proceeds from the event will go to the fund. For more information, call Joanne on 01584 891553.

*Ruth Downes*



RED  HARE

45 HIGH STREET  
CLEOBURY MORTIMER  
WWW.REDHARESALON.CO.UK

01299 270702

PPD FREE - PARABEN FREE - SULPHATE FREE - CRUELTY FREE

"Red Hare now offers a private hairdressing room. Perfect for those wanting more privacy, peace and quiet"

YOUR  
HAIR  
IS  
OUR  
BEST  
ADVERT



**Sue Brown**  
MA MSc DC MMCA  
CHIROPRACTOR

## CLEOBURY CHIROPRACTIC

31 High St. Cleobury Mortimer DY14 8DQ

 **James  
Smith**  
OSTEOPATHS

We offer both **CHIROPRACTIC** and **OSTEOPATHY**,  
using gentle methods suitable for all ages.  
Appointments available outside of normal working hours.  
Both practitioners are fully registered, insured & regulated.

- \* BACK PAIN \* SCIATICA \* POSTURAL PROBLEMS
- \* JOINT PAIN \* HEADACHES (arising from the neck)
- \* Some SPORTS INJURIES

**PLUS** \* COMPUTER (DSE) WORKSTATION ASSESSMENTS  
\* BACK CLASS – Weekly exercise class for those with  
back/neck pain.

**Hands for Heroes:**  
Free Chiropractic Care for War Veterans



**GCC registered**  
General Chiropractic Council  
www.gcc-uk.org



01299 519351 / 07932 000028 / 07506 287191

www.notjustaboutbackpain.com

www.isosteopaths.co.uk

**iO**  
THE INSTITUTE  
of OSTEOPATHY



### WALKING THROUGH MEADOWS

It was just too good to miss. A guided walk through meadows, advertised by Suzanne Thomas and organised by Wade and Rachel Muggleton. No location given in the announcement; if you wanted to join the party, you were advised where it would be.

There were about 17 people of all ages gathered on a Saturday afternoon, when Wade explained that he and Rachel along with family members had the chance to buy an unused site of about 11 acres some ten years ago. It was not in a good state and would need plenty of work to restore this piece of Shropshire to a natural state. Not as a business venture, but it does sell some fruit and one of their small herd of Longhorns is taken off to the abattoir each year. They refer to their cattle and sheep by name, an indication of the respect they have.

Two ponds have been added to encourage natural growth of the grassland, which is strong and high, the water not visible until you are near. Nearby is the orchard that Wade

confessed was a self indulgence with his love of apples; there are 85 different species in there, plus a small selection of pears. The sheep present when we called looked very happy with both location and diet.



*Not visible until you're very close, the two ponds house wildlife that found the place naturally.*

The going was rough for those who'd not opted for country boots or shoes. Faced with a wide sweep of buttercups with just occasional other colours, we were asked to walk in single file, to minimise crushing of the natural inhabitants. This small band of mere mortals understood and complied - such a precious example of

natural growth encourages respect.

There was much discussion amongst those who recognised birds as they moved around the area, some of them using the nesting boxes that were meant for certain types but found others already established. It was interesting to hear the Thomas and Muggleton children pointing out to their parents some of the species being discussed. Such an interest within the family keeps them all on their toes.

The final walk through a wood led to a social area **where** tea or coffee came with fine banana cake and a relaxed conversation and talk of other wildlife events. Two hours of fascinating information and an appreciation of what can be achieved if you give Mother Nature time and space with just a little encouragement. No sign of gleaming new buildings, just simple structures using material that was available without felling another tree.

From there we travelled into town and the Pudding Club meeting at the Community Hub. That's another story, on Page 11.

*Jim Reynolds*

*Charlton Interiors*

UPHOLSTERY & INTERIORS

Rosemary Jones

Mob: 07837 609229

Phone: 01584 861823

Email: [info@charltoninteriors.com](mailto:info@charltoninteriors.com)

[www.charltoninteriors.com](http://www.charltoninteriors.com)

### MOBILE FOOT HEALTH CARE

A thorough nail and foot care treatment in the comfort of your own home. Registered and Insured practitioner.

**Karen F H Di, RFH**

**07378 122788**

## Do you have a Will? Never managed to get it written?

Writing your Will and planning for later life can feel like a daunting process...

**It doesn't have to be!**

I guide you through the process of writing your Will and Lasting Powers of Attorney

**Call me now to find out how I can help**

**07966366505**



**I'm Stephanie**



07966366505 | [Info@thewillwritinggroup.co.uk](mailto:Info@thewillwritinggroup.co.uk) | [www.thewillwritinggroup.co.uk](http://www.thewillwritinggroup.co.uk)



Electrical installations from domestic to commercial and industrial no job to big or small.

Over 16 years experience.  
Local family run business.

Contact: Phone 07872498829  
Email [lee.leapelectrical@gmail.com](mailto:lee.leapelectrical@gmail.com)



Friendly, honest tree surgeon serving  
Bewdley and surrounding areas.

**Contact Isaac  
for a free quote!**

**Mob: 07845 615 806  
Tel: 01299 513 448**

All Aspects of Tree Work  
Stump Grinding

Hedge Trimming/Reducing  
Grounds Maintenance

Logs &  
Woodchips

**Qualified**

**Insured**

**Tidy**

Email: [elphicktreeandgarden@gmail.com](mailto:elphicktreeandgarden@gmail.com) Web: [www.elphicktree.co.uk](http://www.elphicktree.co.uk)

## MORE ON BLOOD DONATIONS



*Marilyn, with her shield recording over 100 blood donations.*

I had the honour of being invited to the Blood and Transplant National Recognition Awards event at Aston Villa Park on May 20th to be presented with a Certificate amongst 125 other Donors (including Philip Westwood from Cleobury Mortimer) for giving 100+ donations of Blood throughout my life.

We listened to some inspirational stories from people who had survived because of blood donations. One, who is in remission from Cancer at present, and a young

mother who lost three litres of blood after giving birth. It was very poignant.

Due to some health issues, I am no-longer able to give blood, but I do ask, if you are able to donate, please do so; it may save a life. As a matter of interest, only 4% of the people in this country are donors.

If you need more information:

Visit: [blood.co.uk](http://blood.co.uk)

Email: [enquiries@nhsbt.nhs.uk](mailto:enquiries@nhsbt.nhs.uk)

T/N: 0300 123 23 23

Marilyn Wood

## THE PUDDING CLUB

When I was a mucky little schoolboy, the term Pudding Club was something you did not discuss in polite company. I have matured a little since then and the company I keep is far more polite, so I can tell you about the Pudding Club meeting at the Community Hub in June.

It was a simple idea. As many varieties of puddings as possible would be produced and people would be invited to try them, as many as they liked, for a modest £10.00. We arrived late after walking through some meadows, and it was hard to find two seats vacant. Coffees were ordered, £10.00 entry fees

paid and we sat to chat and pass the time of day with friends on their way to top up their dishes. All very friendly, and with proceeds from the day raised towards the purchase of the building and then plans for its development, all in a very good cause.

If those behind the Pudding Club will keep us posted, we'll be happy to advise Clarion readers and support personally. The enthusiasm and sheer hard work that has seen what was once the Methodist chapel turn into a popular town venue is astonishing. Another Cleobury success; we're good at that.

## ROCK PATHFINDERS

Walks between five and seven miles, many undulating with stiles. Everyone is welcome, but sorry, no dogs allowed. This month's programme:

Thursday, July 4th, starting at 10.00am from Offa's Dyke Centre, West Street, Knighton LD7 1EN

Thursday, 18th, starting at 10.00, from The Mason's Arms, Castle Hill, Wichenford, Worcs. WR6 6YA.

Further details: [dsskey@rockpathfinders.uk](mailto:dsskey@rockpathfinders.uk) Or ring Alan on 01299 400304.



### Home Support Services

All staff enhanced DBS checked with over 20yrs experience and training within the local authority/social services mainstream and dementia care sector. Fully insured.

Are you in need of support with the following basic day to day tasks?

Assistance during the day or night	Completing Forms
Companionship	Pet Care
Shopping/Household tasks	Attending social events/ appointments

Contact Liz  
Tel: 01299 271623  
Mob: 07826 929222  
[liz@livelifeathome.co.uk](mailto:liz@livelifeathome.co.uk)

Other support services available on request.

[www.livelifeathome.co.uk](http://www.livelifeathome.co.uk)

Contact Tracey  
Tel: 01299 211660  
Mob: 07957 659909  
[tracey@livelifeathome.co.uk](mailto:tracey@livelifeathome.co.uk)



## Traditionally handcrafted bespoke oak frame buildings




Here at Hopton Oak we  
design, build and install:

- Stables
- Porches
- Garages
- Extensions
- Garden rooms
- Conservatories
- Gazebos and Pergolas



Contact us to discuss your oak frame project or any questions, the team will be happy to help.

[hoptonoak@outlook.com](mailto:hoptonoak@outlook.com) | 07951041977 | [hoptonoak.co.uk](http://hoptonoak.co.uk)  Hopton Oak



**WINDSOR PRICE REPAIR SHOP**  
Automotive

Email: [mikeytwonames@icloud.com](mailto:mikeytwonames@icloud.com)

Tel: 01299 213558

Mobile: 07513 821616

Unit 1, Hillocks Farm,  
Cleobury Mortimer, DY14 0EB.



## IRENA'S FOOT CLINIC

OVER 30 YEARS EXPERIENCE AS A QUALIFIED FOOT HEALTH CARE PRACTITIONER  
PROFESSIONAL TREATMENT IN THE COMFORT OF YOUR OWN HOME OR MY SURGERY

- Nail trimming
- Ingrowing toenail treatment
- Fungal infection treatment
- Nail reconstruction
- Callus reduction
- Corn removal
- Athletes Foot treatment
- Verruca and wart treatment

**CONTACT IRENA ON 01299 270212 and 07789070629  
1 FURLONGS ROAD, CLEOBURY MORTIMER DY14 8AR**



## THE BREAKFAST CLUB

'Never work with children or animals' Liz Smith, our June speaker conceded was probably pretty sound advice but she and her husband had never followed it, resulting in hard work but many happy memories.

They had four children who inevitably wanted their own pets which ranged from rabbits, guinea pigs and kittens to gerbils (nasty little things). Came the day when they wanted a pony but because of the prohibitive expense, they went down the rescue route and acquired a white, lame pony with one blue eye. As though that wasn't difficult enough, he came with two companions from which, they were told, he couldn't possibly be parted. His buddies were two Shetland ponies that looked adorable but were absolute demons! Optimistically, every year they entered the pony into Lindridge Show and vied with another family who also had an ugly pony for last place!

More animals including goats, donkeys and working sheep dogs of varying abilities, were acquired when they set up the You & Ewe charity, devised to give city children a taste of rural living and to educate them to be aware of where their food came from and how it was produced. The charity not only educated the children but often afforded them with respite from very difficult home lives.

Fortunately, by chance Liz and Geoff acquired a Berkshire pig and managed to tap into a niche rare breeds market which helped offset the costs of running the charity and paying for the animals. Over time, they became quite good at lambing and breeding pigs but Liz graciously acknowledged that they were helped greatly by the local farmers – once they realized that she and her husband were serious about this enterprise.

You & Ewe still exists as a charity, but because of huge changes in legislation is very different from when Liz and Geoff ran it. She will always recall her time and involvement with the charity, her young family and all the animals with great affection – and many a wry smile. For information about the Breakfast Club, please contact Angela Drennan on 01299 270636.

*Diane Waddington*

## THE READING GROUP

A wide range of comments as usual after reading our most recent book 'Tom and Will' by Matthew Plampin. Set at Harewood House, West Yorkshire in 1797 it's a story of intrigue and artistic rivalry. A young JMW Turner and his friend Tom Girton spend a week with the aristocracy, (think Downton Abbey) where a range of antics take place. Turner keeps trying to depart and being thwarted. Apparently Turner did stay at Harewood once but not when depicted or with Girton. A

slow read to start but races on towards the end. The most enjoyable sections were descriptions of the scenery, seen from an artists perspective. At one stage Turner talks of colouring and we branched off to talk of sunsets and sunrise. Would recommend for lovers of history. Our next book is 'The Forty Rules of Love' by Elif Shafak and our next meeting will be on July 15<sup>th</sup>.

*Deana Kimber 271754*

## AN APOLOGY

Sam Dolphin apologises for not being in the Benefice office on June 13<sup>th</sup>, but she did have a rather pressing appointment to keep at Royal Ascot.



*Photographic evidence of the lady and her Toby at the races at Ascot.*

Sam is making a name for herself in her two public roles as manager of the Market Hall and secretary of Saint Mary's Benefice office. Her reliability with the monthly Benefice programme is absolutely spot on and as manager at the Market Hall she encourages the likes of your editor to tell about new office tenants. The latest example of that you'll find on Page 25.



**SAVE THE DATE**  
**23 AUGUST - 6.30 FOR 7.00PM**  
 Back by popular request

# BARN DANCE



Cleobury Mortimer Parish Hall is the largest in the area

Would you like to celebrate an event, party, wedding, or just a get together?  
 We are able to cater for small or large parties, sit down dinner parties for up to 100 people with or without a bar.

Come and have a look at what we can offer. To book, call Robert on 01299 270047

 [www.cleoburyparishhall.uk](http://www.cleoburyparishhall.uk)

 [cleoburmortimerparishhall](https://www.facebook.com/cleoburmortimerparishhall)



**20 July 7.30pm - A Haunting in Venice**

"A Haunting in Venice" is set in eerie, post-World War II Venice on All Hallows' Eve and is a terrifying mystery featuring the return of the celebrated sleuth, Hercule Poirot. Now retired and living in self-imposed exile in the world's most glamorous city, Poirot reluctantly attends a séance at a decaying, haunted palazzo. When one of the guests is murdered, the detective is thrust into a sinister world of shadows and secrets.

**Tickets £5 - Bar, tea, coffee, cake**



Care At Home

TLC Care at Home are a well-established family run, Home Care Provider who have built up an excellent reputation within our local communities

We have recently been rated as **OUTSTANDING** by CQC and this puts TLC Care at Home in the top 3% of providers in England



## Professional care and support in your own home

Our dedicated Care Team are here to help support you with 24/7 care provision should it be required. At TLC Care At Home, we are dedicated to supporting people with wide range of needs, including Dementia, Acquired Brain Injury, Physical Disabilities, Learning Disabilities, Sensory Impairments and supporting our aging population.

Depending on your individual needs, we can offer varying degrees of support from young adults to very mature people. TLC Care at Home are here to help anyone who requires care and support to enable them to remain living at home for as long as it is safe to do so.

## Comprehensive range of care services

- Domiciliary Care
- Palliative care
- Personal care
- 24 hour care
- Companionship
- Dementia Care
- Overnight Care
- Elderly Care
- Care for young adults
- Supporting younger people
- Domestic services: cleaning, cooking, washing and shopping
- Collections of pensions or prescriptions
- Trips out and about

Please contact us now for more information **01299 272 897**  
 Email: [wecare@tlccareathome.co.uk](mailto:wecare@tlccareathome.co.uk)  
 Website: [www.tlccareathome.com](http://www.tlccareathome.com)



## NEW NOTES ON SONG

The New Note Singers drew a capacity crowd to Clee Hill Village Hall on June 15th for an evening of voices and occasional instruments under the control of Barbara Hall. All funds to go to Dementia UK, and Jackie Handy was the master (mistress?) of ceremonies.

There was a wide selection of pieces from popular favourites to famous musicals, presented with interesting harmonies, all sung with an enthusiasm that set the atmosphere for the event; smiles all round. All this plus two instrumental performances and a poem reading by organiser Derek Handy. Teas and cakes served to the tables during the interval, when the raffle was drawn. But that highlighted an omission in an attractive venue - no public address system. It made compere Jackie's work hard and with the audience chatting it was almost impossible to hear the winning numbers. The event deserved better.

One welcoming note was a local resident who invited my partner to park the car in her drive. Less welcoming was the jammed lock on the ladies loo that had her looking for a way to climb out until she was loaned a

large screwdriver to use as a lever.

## CLEOBURY GARDENERS

As gardeners we sometimes forget gardening can be unpredictable. We make plans, buy stocks and look at diaries to put our dreams into existence. Then Nature throws a googly, as this year, when the weather has been so wet and chilly that our seedlings fail to germinate and growth only starts when the sun shines, and even that has been unreliable. This Spring season has been a lesson in who is in control of our garden and sometimes it isn't us! We were reminded of this when our planned visit to Wade Muggleton's garden in Stottesdon had to be cancelled because, as Wade said, there is very little to see. However, he did bring his Fruit and Vegetable Garden to our meeting on May 13th in the form of inspiring slides and aspiring talk. We hope to visit Wade's garden if the season improves, and if that can be organised, we will include dates in future articles.

Our meeting on June 10th gave us the History of Birmingham Botanical Gardens. Philip Aubury became Director in 1987 and oversaw a modernisation

programme over the next twenty years, having been successful in negotiating a £1 million grant and a £500,000 interest-bearing loan with Birmingham City Council - couldn't do that now! He talked of the start of Lawn Tennis on the Archery field and how the rules adopted at that time became the rules used now all over the world. The Archery and Lawn Tennis Assoc'n still exists on neighbouring land. He also told us of meeting ex-US President Bill Clinton when the GB Summit of World Leaders was held in Birmingham in 1998 and the G8 Banquet was catered for at the Botanical Gardens. Mr Clinton made a request for a short tour. The success of the modernisation vision increased footfall and therefore income and Mr Auburn's final claim was that the interest bearing loan had been repaid in full.

Our next meeting is on Monday July 15th, 7.30pm for 8.00 at the Parish Hall, when Howard Drury will talk on 'Getting the Best from Clay Soils'.

*Linda Ashman*

*Secretary, Cleobury Gardeners*

*Email [ashmanlinda240@gmail.com](mailto:ashmanlinda240@gmail.com)*

*Also find us on Facebook/  
Instagram/CleoburyCountry*

## Lower St Garage

7 Lower St, Cleobury Mortimer. DY14 8AA



- M.O.Ts on cars, motor bikes & small commercial vehicles
- Tyres, Tyre fitting.
- Puncture repair and Tracking.
- Diagnostics, Air conditioning
- Welding.
- Service and Repairs to most vehicles.
- Delivery and Collection Service Available

**Contact The Team at Lower St Garage on: 01299 270208**



**BEWDLEY SIXTH FORM**  
We fly with our own wings

**we are ambition**



**THE BEWDLEY SCHOOL FOUNDATION**

**OPEN EVENING**  
**TUESDAY 1st OCTOBER 2024**  
5.30pm - 8.00pm  
Bookings will be available in September via our website:  
[www.bewdley.worcs.sch.uk](http://www.bewdley.worcs.sch.uk)

**SIXTH FORM ADMISSION:**  
OPEN TO ALL PROSPECTIVE  
SIXTH FORM STUDENTS



**Purrrfect Cattery**

Comfortable and spacious pens for single or double occupancy  
fully licenced by Shropshire Council

**visit our website: [www.purrrfectcattery.co.uk](http://www.purrrfectcattery.co.uk)**

**Contact us on: 01299 270565 or mobile: 07968 111415**

**Or email: [enquiries@purrrfectcattery.co.uk](mailto:enquiries@purrrfectcattery.co.uk)**

## Margaret Robinson. Her family's tribute.

---

Mum was born in Northern Ireland and had four younger brothers. They grew up on the farm at Ballyhargen. Sadly when mum was just 14, she lost her dear mummy which had a massive impact on her. Life was difficult at times.

At the age of 16, she was swept off her feet by the dashing handsome local farmer boy David. They met at a Young Farmers Games night and went on to be the first couple from Dungiven Young Farmers Club to marry. Mum was 18 and they bought their first farm, Tree Tops. The house was in the style of an English country cottage with climbing roses in the garden. Mum forever loved her roses.

They quickly went on to have two beautiful daughters and Adrian. In 1978, they made the decision to move to England and their new family home, Mawley Town Farm, which has always been a very special place. All their earthly belongings were packed into a silage trailer to make the journey across the water. And the new adventure began.

At Mawley, mum was quite often found on the seat of a tractor or up in the milking parlour. She was never afraid of hard work; the calf feeder, cream maker and even the chief bottle washer.

When it came to gardening and painting, mum loved both of these. Dad would be very keen to go slurry spreading just at that moment, and leave her to it!

She was truly an amazing mum. The house was full of love and laughter, cups of tea and caramel squares. Dinners were always interesting and often portions were stretched to almost 'feeding of the 5000' or alternatively she would forget and have a surprise find the next day in the back of the Aga with the words "I wonder what that was." It was confusing at times in our house about our family unit. It was rarely just the five of us there.

There would be visitors staying for a while, B+B, along with a wide variety of people living with us and sharing our home.

We had Rob, Ollie, Robert, Martin and Alec. Mum stuck him up in the attic, which was a mistake as his room was immediately above their bedroom and let's say he had quite a few late nights!

More recently, over at New House Farm she had the lovely Olena and Corella to share their home for quite some time. Mum wasn't a loud or showy

person. She was all about demonstrating God's love for people through actions.

This also extended into the amount of work that mum did with charities and organisations. She was never held back by the unknown. Back in the 1980s mum and dad began supporting Send A Cow and they even flew to Uganda with a load of cows to be distributed to their new African families. This was the beginning of her 35 years of charitable fundraising at Burwarton Show managing the Mawley Milk Bar.

Mum loved singing. Even just a couple of days before she passed away, she was singing along to some wonderful hymns. She was keen to encourage us musically as we were growing up, took us to piano lessons, had Cherith playing the flute and took me around when I was playing tenor horn in the Bell Inn brass band. She even encouraged Adrian to try the cello....we all knew how that was going to turn out!

In 2006, mum and dad moved to New House Farm; a big change for her. She was supposed to have more time for herself. But that wasn't in her character and she threw herself into helping others in the community, along with indulging herself in her garden and spending time with her seven grandchildren.

Several years ago, mum received an invitation to attend the Garden Party at Buckingham Palace for her charitable works. She was flabbergasted and could never comprehend that someone would have nominated her for this, but there was no doubt to all of us that she truly deserved it.

Mum loved nothing more than having us all together for family gatherings. All 15 of us would gather round the table for Christmas turkey, or be out hunting for Easter eggs. I'm sure there are still several out there that she forgot where she put them.

Mum was 13 when she gave her life to the Lord. We believe that this steered her life, and made her the wonderful person that she was. Mum's life was full of love. She loved so many people and was loved by so many in return. She was the most amazing role model as a mother, a grandmother, wife and as a Christian. We will ALL miss you mum, but we truly thank God that we had you in our lives. You were so special.

# BOILER INSTALLATIONS

## GAS, LPG & OIL BOILER SPECIALISTS

UPGRADE YOUR OLD BOILER TO AN  
**A-RATED** BOILER & SAVE UP TO **£580**  
A YEAR ON YOUR ENERGY BILLS

"Excellent service! They turned up when they  
said they would, and did what they said they  
would, going the extra mile when necessary.  
I highly recommend this company!"

  
**WORCESTER**  
Bosch Group  
Accredited Installer



**SHELTER-ADAMS LTD**

0800 6124 109 | 07990 523 790  
[enquiries@shelter-adams.co.uk](mailto:enquiries@shelter-adams.co.uk)



0% Finance & Interest  
Bearing options available  
on boiler installations!  
11.9% Representative APR

Locally based family run business in the Heart of Worcestershire

## John Brazier & Co

Accountants & Business Advisors

Accounts – Company, Partnership and Sole Trader  
Tax Returns – Corporation Tax and Personal  
VAT - Returns and advice  
Payroll Service including RTI

For a personal and  
professional service

Contact John Brazier or Sarah Morgan to discuss your requirements on 01299 271473 or email at [info@johnbrazierco.co.uk](mailto:info@johnbrazierco.co.uk). Alternatively, you can arrange a meeting at 53, High Street, Cleobury Mortimer, Worcestershire DY14 8DQ

01299 271 473

Number Nineteen  
**No.19**  
Dental Laboratory

## Denture Repairs

### SPEEDY, QUALITY DENTURE REPAIRS

Cracked/broken dentures repaired the same day.

A 1 HOUR service is available for when time is of the essence, just  
call to make an appointment.

19 Lower Street, Cleobury Mortimer, DY14 8AL

Email: [nevilleweaver@googlemail.com](mailto:nevilleweaver@googlemail.com)

Phone: 07973856733

All work undertaken by a GDC registered technician



**A.B. Plastering**  
Plus Traditional Lime Plastering

**Adrian Booton**  
PLASTERER

4 Severne Green, Bayton  
Nr Kidderminster, DY14 9LL

Tel: 01299 832 838  
Mobile: 07974 582 524



Rob and Annie look forward to welcoming you to  
**The Fighting Cocks Inn, Stottesdon.**

Why not pop along for a drink and some delicious food. We have regular live music, so please keep an eye on our Facebook page.

Our opening hours are:

**Wednesday – Friday** from 5pm – 11pm  
(food served from 6pm – 8.30pm)

**Saturday** from 12 noon – 11pm  
(food served from 1pm – 7.30pm)

**Sunday** from 12 noon – 10pm  
(lunch from 12 noon – 3pm)

The Fighting Cocks Inn, 1 High Street,  
Stottesdon, Kidderminster DY14 8TZ.

Telephone 01746 718270

**A WARM WELCOME AWAITS YOU.**



## What can a Nutritionist help with?

- Digestive issues
- Chronic Fatigue
- Sleeping issues
- Painful periods
- Menopause
- Migraine
- Type 2 Diabetes
- High Cholesterol
- Skin Conditions
- Children's Health
- Anxiety/Depression
- Vegan/vegetarian diets
- Weight Management
- plus many more

Visit [www.eatyourselfbetter.co.uk](http://www.eatyourselfbetter.co.uk) to find out more or book a free mini consultation to see what I can do to help you. 07790521636

## TIME TO CLEAN YOUR OVEN? LET US DO THE JOB YOU HATE

- Ovens
- Grills
- Extractors
- Filters
- BBQs
- Microwaves
- Hobs
- Ranges
- AGAs

Call or go online today for your free estimate

**OVENCLEAN**  
The original oven cleaning specialists

07913 123543  
[ovenclean.com](http://ovenclean.com)



FOR ALL YOUR ACCOUNTANCY REQUIREMENTS

[www.fairway-accountants.co.uk](http://www.fairway-accountants.co.uk)

Head Office: 01299 822283  
[team@fairway-net.co.uk](mailto:team@fairway-net.co.uk)

Simon Hector: 07896 439594  
[sjh@fairway-net.co.uk](mailto:sjh@fairway-net.co.uk)



*Richard Haines*

The Worcestershire Chimney Sweep

- ♦ Traditional & Power Sweeping Services
- ♦ Certified Chimney Sweep
- ♦ Insurance Recognised certificate issued



M: 07752 116629 T: 01584 781358 E: [lostcity5@hotmail.co.uk](mailto:lostcity5@hotmail.co.uk)

[www.theworcestershirechimneysweep.co.uk](http://www.theworcestershirechimneysweep.co.uk)





I thought I knew about moths. They fly at night, are attracted to lights, are eaten by bats and some of them eat my carpets and jumpers. Then I heard about their importance in the biosphere: as part of many millions of food chains and playing their part in pollinating flowers and food crops.

Then something else happened. I found out that there were over 2500 species of moth in the British Isles and when I saw pictures of them, I was amazed to see that they weren't all dull brown, as I had imagined. In fact many are extremely beautiful: the big Elephant Hawk-moth, delicate Maidens Blush and glowing Common Emerald to name but three! I can see how the urge to collect could set in!

We have friends (members of the Wyre Forest Study Group) who visit the farm occasionally to trap and monitor night-flying moths. They choose a warm, still evening and set up a very bright light over each trap. The moths are attracted to the light but then hide away in the egg boxes placed as refuges until the trappers identify and release them at the end of the session. Their records are sent to the Worcestershire Biological Records Centre and add to the data from the Wyre Forest amassed by keen entomologists since the mid nineteenth century. This is a very important habitat for moths, with 1112 species being found in the Wyre Forest and another 75 nearby. Although numbers have suffered here, as in so much of the UK, there is some optimism that recent changes in woodland management (particularly the reduction in dark conifer plantations and opening up of rides, glades and coppice plots in the

deciduous sections) will benefit many moth species.



Anyone can take part in the National Moth Recording Scheme. Many moths fly during the day rather than at night, and you may see them while you're relaxing in the garden: in fact Butterfly Conservation's website says that an ordinary suburban garden is likely to host over 100 species! Identification is relatively easy for most species, especially with one of those snazzy smartphone apps (made for those of us with poor eyesight and poor powers of retention of information). Go to <https://butterfly-conservation.org/moths> to find out more.

Many thanks to Mick Farmer for the photo of the tiny but beautiful Mint Moth (genus *Pyrausta*) which visited his Bewdley garden.

Linda Iles



## Grainger Jones your local independent financial adviser

Grainger lives in Cleobury Mortimer giving the residents and surrounding areas a dependable financial planning service.

- **Wealth Management**
- **Retirement Planning**
- **Investments & Savings**
- **Family & Business Protection**

An initial consultation is available at no charge

To book an appointment or just have a chat, please contact Grainger below.

tel: 07974 100089

email: [grainger@meridenfp.co.uk](mailto:grainger@meridenfp.co.uk)

website: [www.meridenfp.co.uk](http://www.meridenfp.co.uk)



Bagginswood, Cleobury Mortimer,  
Nr. Kidderminster Worcs. DY14 8NB  
Telephone: 01746 718732

### Heath Farm Meats, Bagginswood

#### Opening Hours

Wed 8am to 5.30pm, Thurs 8am to 7pm, Fri 8am to 5.30pm, Sat 8am to 12.30pm

#### Straight from Our Farm to Table

We rear & sell all our own beef, pork, lamb & mutton through our shop on farm. We also make our own flavoured sausages, burgers, home cured bacon, gammon etc. No order too large or small.

Hams ● All Poultry ● Honey ● Mawley Milk & Cream ● Ashley's Cakes & Bread ●  
Jams ● Eggs ● Cheeses ● Apple Juice ● Potatoes ● Meat Pies ● Sticks & Logs

Telephone 01746 718732 with your order to arrange a date & time for collection



## TURNERS GATES

bespoke sizes at standard prices



A small family run business specialising in quality wooden gates to suit all entrances.

Visit our website: [www.turnersgates.co.uk](http://www.turnersgates.co.uk)

Drop us an email: [turnersgates@outlook.com](mailto:turnersgates@outlook.com)

Or give us a call on: 01299 270 965





**Cleobury Mortimer Benefice  
Church services throughout the Benefice in July**

**St Mary's Cleobury Mortimer**

Sunday 7<sup>th</sup> July: 10.00am Family Eucharist  
Sunday 14<sup>th</sup> July: 8.30am Said Eucharist  
10.00am Parish Eucharist  
Sunday 21<sup>st</sup> July: 10.00am Parish Eucharist  
Sunday 28<sup>th</sup> July: 10.00am Parish Eucharist  
Every Wednesday: 10.00am Eucharist

Every Thursday: 10.00am – 11.30am: Drop in at St Mary's. Drop in for a free cup of tea or coffee.

**St Michael and All Angels', Hopton Wafers**

Sunday 7<sup>th</sup> July: 9.30am Eucharist  
Sunday 21<sup>st</sup> July: 9.30am Eucharist

**St John's, Doddington**

Sunday 7<sup>th</sup> July: 11.00am Eucharist  
Sunday 21<sup>st</sup> July: 3.00pm Evening Prayer

**All Saints', Neen Sollars**

Sunday 7<sup>th</sup> July: 11.00am Village Worship  
Sunday 14<sup>th</sup> July: 11.00am Village Worship  
Sunday 21<sup>st</sup> July: 11.00am Village Worship  
Sunday 28<sup>th</sup> July: 11.00am Village Eucharist

**St George's, Milson**

Sunday 7<sup>th</sup> July: 6.00pm Even Song  
Sunday 21<sup>st</sup> July: 11.00am Parish Eucharist

**St Mary's, Neen Savage**

Sunday 7<sup>th</sup> July: 6.00pm Evening Prayer (BCP)  
Sunday 21<sup>st</sup> July: 9.00am Parish Eucharist (BCP)

**St John the Baptist, Kinlet**

Sunday 14<sup>th</sup> July: 11.15am Parish Eucharist (BCP)  
Sunday 28<sup>th</sup> July: 6.00pm Evening Prayer (BCP)

**Leadership Team:**

Rector: Reverend Prebendary Ashley Buck: 07477 165602  
Curate: Reverend Sarah Lupton

Church Office: Open Tuesday & Thursday 8.00am – 2.00pm Email: [cleoburychurch@hotmail.com](mailto:cleoburychurch@hotmail.com)  
Website: [www.cmbenefice.com](http://www.cmbenefice.com)

## Mark Pearce

Landscape, Design and Rustic Garden Furniture

- Fencing
- Patios
- Drives
- Decking
- Garden Sheds
- Summer Houses
- Fence Panels
- Log Stores



And Much More

Top Quality Fully Treated Timber Products

Mobile: 07875425028

Tel: 01746718404

## Robert Bradley Logs

07794 798616



*Seasoned Firewood, Hardwood,  
Softwood or Mixed loads of logs.  
Free Local Delivery*



Fresh milk and cream from  
Cleobury Mortimer

[www.mawleytownfarm.co.uk](http://www.mawleytownfarm.co.uk)

01299 270359

## SKELLERNS

DOORS & WINDOWS



- UPVC Fascias & Guttering
- UPVC Windows, Doors & Conservatories
- General Home Improvements

- Re-roofing & general building work
- Replacement Glass
- Patio Jet Washing



Free No-Obligation quote. FENSA registered company with years of experience

Call on: 07807 759595 or 01584 890681  
[www.skellernsdoorsandwindows.co.uk](http://www.skellernsdoorsandwindows.co.uk)

## HYPNOWOMAN



An unusual title for a lady with a wide responsibility for patient care to use, but Jennie Kitching is no stick-in-the-mud.

She has an office in the Market Hall, the base for her work as a hypnotherapist, but she is also the National Leader as the Wellbeing Champion for NHS England.

She has two offices with NHS bases, one in Russell's Hall Hospital at Dudley, the other in Kidderminster, where teams deal with local needs. She was living in a flat in the Dudley base until deciding to look for a more homely place away from the office. She was liking this area as work in Kidderminster grew and asked a number of agents for prospects. The best recommendation she had was Cleobury Mortimer, but thought it a bit remote until one place appealed. She drove here in a thunderstorm

and struggled to find the address, but the welcome when she did find it and the whole appeal of the town won the day. And when she wanted an office she found it at the Market Hall, with Sam Dolphin ever helpful and heating part of the deal.

She's a published author, 42 books so far. "The best seller is 'Speak Greek Badly'" she smiles. "It's a book to persuade the English to learn. You'll know how to say 'Please' in 20 minutes - learn on the plane!"

The more serious side of her work deals with anxiety, like those who fret because of high blood pressure and learn how to handle the problem. "It's using the power of the mind to heal the body," as she explains it. She has an unobtrusive way of listening to conversation, calling what she hears 'true talking therapy'. It's a client talking about their life and problems as part of a relaxed chat, not feeling they're being cross-examined. She will tell you what you can't do if you are anxious, but can do if you're relaxed.

You sit in a very comfortable chair, she has relaxing music as a background and you chat in a quiet way. You come out with a feeling of relaxation after a talk with a new friend. It really is remarkable how much better and able to cope

you feel. When I've got this copy of the Clarion finished and away to the printers, I'm going back for more. Jennie is on [jenniekitching.com](http://jenniekitching.com)

*Jim Reynolds*

## ADDING TO THE BEAUTY OF THE TOWN

These planters are bringing an extra touch of colour to the town centre, carefully spaced out along the northern side of the sidewalks. Sadly the other side of the road is not wide enough to take both planters of any size and the people walking along that way.

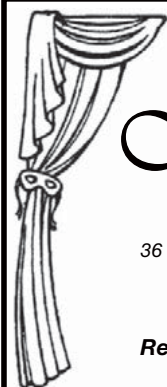


They first came as a decoration around the Farmers' Market, thanks to Clare Todd. The council took up the idea and ordered more from Mike Green. The matter of maintenance was quickly dealt with by Nourish and Flourish, the party name for Katie Jones, Sandra Dodd, Ali Sheffield and Jackie Percival, who tend them as volunteers. Thank you, ladies.



**FLOWERS by FIONA**  
**07875-077941**

**SPECIAL OCCASIONS**  
**WEDDINGS & FUNERALS**  
**FBK ~ Instagram ~ WhatsApp**



Soft furnishing and  
Interior Design Services

**Masquerade**  
Fabrics Limited

**01299 271 680**

36 High Street Cleobury Mortimer near Kidderminster  
Worcestershire DY14 8DQ

Retailers for Sanderson, Harlequin, Monkwell  
Crowson and many more...

Comprehensive design, measuring and fitting service.

# TDC CARPENTRY SERVICES

Fully insured qualified professional  
Excellent workmanship and quality customer care  
From hanging doors, fitting kitchens to bespoke projects

**Tim Clare - 07890 519980**



**AMY'S FOOT HEALTH**  
**FOOT HEALTH PRACTITIONER**  
AMY FRANCE DipFHP, MCFH

Services include:

- Routine Nail Trimming
- Callus Reduction
- Corn Treatment
- Fungal Infection Treatment
- Cracked and Dry Heal Treatment
- Thick Nail Reduction
- Ingrown Nail Treatment
- Cream and Massage
- Medical Pedicure
- Pedicure
- Lower Leg and Foot Massage

MOBILE: 07925 236221 ASK FOR AMY OR LEAVE A MESSAGE

## HANDY MATT

**FOR ALL THOSE JOBS YOU NEED DOING OR NEVER GET DONE AROUND THE HOME AND GARDEN!**

**CALL ME TODAY AND GET THEM DONE.**

**RESTORATION, ROOFING, OUTTERING, BRICKWORK, REPOINTING, CARPENTRY, INSULATION, DECORATING, TILING, FLOORING, DAMP PROOFING, STOVE FITTING, GROUNDWORKS, LANDSCAPING, PATIOS, FENCING, GARDEN MAINTENANCE.**

**TEL: 07731 459631**



**BAGGINSWOOD**

Bagginswood, Cleobury Mortimer,  
Nr Kidderminster, Worcs. DY14 8NB  
Telephone: 01746 718732

### Heath Farm Meats, Bagginswood

Opening Hours

Wed 8am to 5.30pm, Thurs 8am to 7pm, Fri 8am to 5.30pm, Sat 8am to 12.30pm

#### Straight from Our Farm to Table

We rear & sell all our own beef, pork, lamb & mutton through our shop on farm.  
We also make our own flavoured sausages, burgers, home cured bacon, gammon etc. No order too large or small.

Hams ● All Poultry ● Honey ● Mawley Milk & Cream ● Ashley's Cakes & Bread ●  
Jams ● Eggs ● Cheeses ● Apple Juice ● Potatoes ● Meat Pies ● Sticks & Logs

Telephone 01746 718732 with your order to arrange a date & time for collection

## ROCK PATHFINDERS

Free guided walks along our footpaths and bridleways, taking two to three hours. Our walks are between five and seven miles and many are undulating with stiles. Everyone is welcome, but sorry, no dogs allowed. This month's programme:

Thursday, July 4th, starting at 10.00am from Offa's Dyke Centre, West Street, Knighton LD7 1EN

Thursday, 18th, starting at 10.00, from The Mason's Arms, Castle Hill, Wichenford, Worcs. WR6 6YA.

Further details: [dsskey@rockpathfinders.uk](mailto:dsskey@rockpathfinders.uk)  
Or ring Alan on 01299 400304.

*Sue Humphries*

## FLICKS IN THE STICKS

Saturday July 20th, 7.30 in the Parish Hall

"A Haunting in Venice" is set in eerie, post-World War II Venice on All Hallows' Eve and is a terrifying mystery featuring the return of the celebrated sleuth, Hercule Poirot. Now retired and living in self-imposed exile in the world's most glamorous city, Poirot reluctantly attends a séance at a decaying, haunted palazzo. When one of the guests is murdered, the

detective is thrust into a sinister world of shadows and secrets. £5. Bar, tea and coffee.

## CLEOBURY W.I.

There was disappointment for the WI members at June's meeting when the Shrewsbury Town Crier 'cried' off due to ill health. However, everyone was very happy to warmly welcome Mark Greaves from the Community Hub who stepped in at the last moment and gave an extremely informative talk. We learnt how the St Mary's Youth project has developed into the Cleobury Community Hub opening the doors to all ages and needs. The plans for extending the Hub, including a further climbing wall and dance studio sound an exciting prospect for our community. The WI look forward to supporting this project with their fundraising 2024/5. Reports from both Vice-Presidents Diane Waddington and Sue Kershaw on their recent meetings to the Shropshire Federation AGM and the National AGM at the Royal Albert Hall, respectively showed members that the WI is thriving with topical issues around the country.

Following on from the bowling evening in May, the WI returned to CMBC accompanied by some members partners to experience another taster session of Crown Green Bowls. We thank the CMBC for another warm welcome and congratulate some members on joining the club and enjoying a new pastime.

Planning is well underway for numerous outings in the forthcoming summer months:

A visit to Wildegoose Garden Nursery near Munslow on Thursday June 27<sup>th</sup>. This is a contemporary garden in an historic setting which has been featured on Gardener's World

A visit to Three Ashes Dairy Farm to view robotic milking techniques & Laura's delicious ice cream @ the Boyne Arms on Friday July 19<sup>th</sup>.

Morning Coffee at the newly opened Brewe Clee Hill Coffee Shop on Thursday August 8<sup>th</sup>.

Please contact Judy on 01299 270983 or email [judysant10@gmail.com](mailto:judysant10@gmail.com) for further information on joining our thriving WI. Check out the Cleobury Mortimer WI Facebook page.

*Sally Serrell-Cooke*

# REGAL LIVE at the Regal

TENBURY WELLS  
CINEMA • ARTS • THEATRE

\*programme as of 17/6/24



<p><b>LIVE MUSIC</b> <b>Miles Hunt</b> (from The Wonder Stuff) Fri 5 Jul, 8pm</p>	<p><b>24 - 27 JULY 2024</b> <b>REGAL FAMILY THEATRE FESTIVAL</b> Four days of thrilling live shows and interactive workshops for kids and families of all ages!</p>	<p><b>WORKSHOP   SeedHeart</b> Thu 25 Jul, 12.30pm</p>
<p><b>LIVE MUSIC</b> <b>Beach Boyz Tribute Band</b> Thu 11 Jul, 7.30pm</p>	<p><b>WORKSHOP</b> <b>The Paper Puppets</b> Wed 24 Jul, 11am &amp; 2pm</p>	<p><b>Vamos Mask Workshop</b> Fri 26 Jul, 11am &amp; 2pm</p>
	<p><b>LIVE THEATRE</b> <b>SeedHeart</b> Thu 25 Jul, 11am &amp; 2pm</p>	<p><b>LIVE THEATRE   Elvis In Blue Hawaii</b> Sat 27 Jul, 6pm</p>

☎ 01584 811 442    🌐 [www.regaltenbury.co.uk](http://www.regaltenbury.co.uk)    📱 @RegalTenbury  
REGAL TENBURY, 49 TEME STREET, TENBURY WELLS, WR15 8AE | Reg Charity No. 1148555



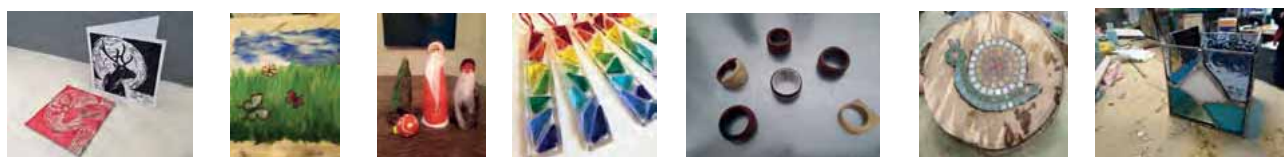
## THE COMMUNITY WORKSHOP AND CAFE



Email [thecwcafe@gmail.com](mailto:thecwcafe@gmail.com) to book

We are really happy to announce that we are adding to our **Men's Shed**. We now have workshops on a Tuesday and a Thursday 10.30 till 12.30 Last session of the year to be on 14<sup>th</sup> December.

We are looking for people to join our **Knit and Natter** afternoons on a Tuesday 1.30 till 4.00



TEL: 07984 354682    📱 @THECWCAFE    EMAIL: [THECWCAFE@GMAIL.COM](mailto:THECWCAFE@GMAIL.COM)    PARK ALLEY, BEWDLEY.    [WWW.THECWCAFE.UK](http://WWW.THECWCAFE.UK)

CLEETON ST MARY AND SILVINGTON VILLAGE HALL  
AVAILABLE FOR PRIVATE HIRE  
PARTIES-CHRISTENINGS-FUNERAL CELEBRATIONS-  
COMMUNITY EVENTS  
CAR PARKING-KITCHEN-OUTDOOR AREA  
CALL US: 07908 791262  
EMAIL:cleetonvillagehall@gmail.com  
Facebook: cleetonvillagehall

### Hobsons Summer Party

We are holding a Summer party at Hobsons Brewery Taproom, Saturday 6<sup>th</sup> July, 12pm – 9pm. The event is ticketed but under 18's go free.

Guests can expect street food from Mukaase Afro-Caribbean Cuisine and wood-fired pizzas from The Pizza Trailer. There will also be a range of stall-holders including Shropshire Salumi, Mr T's Pies, Broad Bean Deli, appleTeme, Apostle Coffee and Nanny Janny's Jersey ice-cream!

Hobsons beers will be pouring from the Taproom bar and airstream bar Sylvia, guests will also have the opportunity to try a brand new collaborative beer when it launches for the first time at the Summer bash.

There will be live music as well as kids entertainment scheduled throughout the day.

Last year tickets for Hobsons' Summer party sold out so don't delay, tickets are available now on Hobsons Brewery's website: [www.hobsons-brewery.co.uk](http://www.hobsons-brewery.co.uk)

# SHROP SWEEP

## CHIMNEY SWEEPING

- Rotary & Manual Chimney Sweeping
- HD Camera Inspections
- Smoke Testing
- Trained by National Assoc of Chimney Sweeps
- Professional, Clean & Efficient

- Great Customer Service
- Certificates Provided
- Competitive Rates
- Availability to fit all schedules

Contact Mark on: 07538 533865  
Email: shropsweep@gmail.com

## WESTONS

WILLS AND PROBATE

Come and see us at our riverside offices located in the heart of Bewdley at 18 Severn side South.

With over 30 years' experience, Mandy and her team offer a personal and professional service specialising in will drafting, lasting powers of attorney, deputyship applications and probate.

Previous clients feedback has included the following comments:

"I've used Mandy at Westons Wills and Probate numerous times over recent years covering all aspects of her expertise. Her guidance on the way forward and solutions to issues that she has suggested has been excellent. She is extremely communicative and responsive, and handles difficult situations with compassion and empathy. I have happily and confidently recommended her services to everyone I know that would benefit from her services."

"Mandy Weston of Westons Wills and Probate is a very professional and knowledgeable person. She has now become my 'go to' legal adviser and has taken on many legal tasks for me and my family. Wills, Probate, Inheritance Tax and Powers of Attorney. I trust her judgement and experience to act in mine and my family's best interest. I would highly recommend her legal services to anyone."

**Tel: 01299 405873**

*"Great expertise and a friendly professional manner"*

Contact Mandy Weston Phone 01299 405873 Mobile 07931 411733  
Email enquiries@westonswillsandprobate.co.uk Website www.westonswillsandprobate.co.uk  
Address 18 Severnside South, Bewdley, Worcestershire DY12 2DX

## N.R. Evans Landscaping

- Grass cutting
- Strimming
- hedge cutting
- garden and site clearance

- Fencing, including:
- Panel fencing
- Post and rail fencing
- Picket fencing
- Stock fencing

domestic and commercial customers welcome

Call for a chat on 07535 902847

Email: nrevansgardenmaintenance@gmail.com Facebook: N.R.Evans Garden Maintenance



THE AGENCY UK

# Local, personal *and* dedicated Estate Agents

## THE LATEST FROM CORAL & TOM...

The Wyre Forest property market has shown steady growth in May and June 2024 with demand continuing to attract buyers for its blend of rural charm and urban convenience. Property prices increased by about 4% compared to this month last year with detached houses, bungalows, and energy-efficient homes being particularly popular. Period properties and cottages also remain in demand for their unique appeal.

The outlook remains positive, with confidence in the market thanks to interest rates being held and expected to lower in August, alongside government inflation targets being hit. Buyers and sellers should, however, stay informed about broader influences including the upcoming election that could see new changes in legislation that each political party is pledging if they come to power.

If you would like to talk about the market and how it's affecting your property value or about an impending move, please do not hesitate to contact us for a chat.



**Coralie Walrond** MNAEA MARLA

**Tom Jackson** MNAEA

📞 **01562 541053**

✉ [kidderminster@theagencyuk.com](mailto:kidderminster@theagencyuk.com)

Scan code to visit  
our website



Brookside, Eagle Lane, Cleobury  
**NOW SSTC**  
Sale agreed over asking price!



# living with us at Dodddington Lodge

## *Care and Warmth at its Heart*

We would like to welcome you and your family to Dodddington Lodge, our newly renovated, privately owned residential and dementia care home in the historic, tranquil hamlet of Dodddington, Nr Cleobury Mortimer. Located on the beautiful Worcestershire & Shropshire boarder, providing picturesque views from every aspect of our home.

With a modern bistro dining room and bar with a delicious daily menu created by our accomplished chef. Individually designed spacious double rooms, allowing couples to stay together or beautiful single rooms all with en-suites and stunning countryside views. Even a hairdressing salon for a little pampering to provide a place of well-being.

Dodddington Lodge is a place where friendships are made and special moments are shared. We organise many fun activities that everyone can get involved with, whether that's a sing along, arts and crafts, collecting fresh veg from the allotment or just simply helping each other with a crossword in our daily newspaper. Each day is different, we certainly have many happy moments...

Our home is a loving community and family, where you can consider Dodddington Lodge a home away from home. We will provide you with all the key information, guiding you through every step of the process, whether you are staying with us for a short or long stay.

Come along!  
Coffee morning  
on Friday 12th  
July 2024



Join us for a warm cup of cheer  
and plenty of laughs at our  
monthly Dodddington Lodge  
Coffee Mornings!

Every 2nd Friday of the month, come together with residents, family & friends over tea or coffee. Enjoy freshly baked cakes as well as the Dodddington Lodge monthly raffle.

For only £2.50 per person – including your beverage and slice of cake – join us for our get-together on Friday, July 12th, 2024, from 10 am until midday.

We look forward to seeing you!

[www.dodddingtonlodge.com](http://www.dodddingtonlodge.com) | E: [enquiries@dodddingtonlodge.com](mailto:enquiries@dodddingtonlodge.com) | T: 01584 707084

Dodddington Lodge, Residential Care Home, Dodddington, Nr Cleobury Mortimer, Shropshire DY14 0HJ.



*Remember to follow us*



## OUR VISIT TO WELLINGTON HOME AND GARDEN CENTRE SPARKS EXCITING PLANS FOR A BEAUTIFUL SUMMER IN THE GARDEN.

We had a lovely visit to the Wellington Home and Garden Centre in Hereford! Here at Doddington Lodge, we love our plants and gardens, and we were eager to gather some great ideas, especially for our Sensory Garden as the warmer summer weather is on its way. We loved exploring the vibrant flowers, lush greenery, and a variety of garden accessories. The friendly and knowledgeable staff shared helpful tips and creative ideas, giving us lots of inspiration. We can't wait to spend lots of time outside in our gardens this summer planning our next gardening projects.!



### DODDINGTON LODGE EARNS 5-STAR FOOD HYGIENE RATING!

We are thrilled to announce that Doddington Lodge has been awarded a 5-star food hygiene rating! Our fantastic team of chefs - Sarah, Veronica, and Rachel, consistently create wonderful menus for all our residents. They truly go above and beyond every day. Ensuring every meal is not only delicious but also prepared to the highest standards.

[www.doddingtonlodge.com](http://www.doddingtonlodge.com) | E: [enquiries@doddingtonlodge.com](mailto:enquiries@doddingtonlodge.com) | T: 01584 707084

Doddington Lodge, Residential Care Home, Doddington, Nr Cleobury Mortimer, Shropshire DY14 0HJ.



*Remember to follow us*

## CARTER'S ANTIQUES



We are looking to purchase all manner of antiques, jewellery, coins, medals and curiosities.

For a free valuations kindly telephone

**John Carter: 07779 311792**

Or email: [johnbarney743@gmail.com](mailto:johnbarney743@gmail.com)

## Alan Smith Aerials

### Digital TV Installations.

**Freeview** aerials fitted and distributed around the house.

**Freesat** box, dish, and cable supplied and fitted. One off payment, **No contract or subscription required.**

Extra points, Repairs, New fits, Set ups, Multi room.

All work is carried out by a **Local**, fully qualified and insured installer.

**01299 270007 or 07970 675728**



**Natalie Taylor** Dip CFHP MPS Pract.

**Specialist Foot Health Practitioner**

Specialising in:-

- In-growing toenails
- Fungal infections
- Nail trimming
- Verrucae
- Calluses
- Corns

All from the comfort of your own home.

If you would like to make an appointment, please call on **07779 113982 or 01584 890112**



## COUNTRY SKILLS

CPCS/NPTC Approved—fully insured

- Outside Renovation
- Tree Surgery, Hard Landscaping
- Slabbing and Fencing
- Decking, Roofing
- Contract Mowing

Call for a free quotation

R. Price & Sons

Mobile: 07967 140720 Email: [roger@country-skills.co.uk](mailto:roger@country-skills.co.uk)



**Claire Bradley**  
*Floral Designs*

Florist for all occasions, specialising in wedding and funeral flowers

Winner of the Matrimony Award 2020 Best Wedding Florist  
Nominated for 2021 Matrimony Awards

Christmas workshops available



Email: [clairebradley1@icloud.com](mailto:clairebradley1@icloud.com)  
01299 270415 or 07980 580770



## SINGING LESSONS

**Professional singer and experienced teacher recently**

**moved to this area**

**Vacancies available**

**All styles, ages, standards welcome**

**Contact Angela Kazimierczuk on**



**Domestic oil-fired boiler breakdown & maintenance services.**

27 years' field-service experience with leading UK boiler manufacturer Worcester Bosch.

**Donovan Taylor**

**Tel: 01299 828670 or 07807 837040**

[donovan.taylor@sky.com](mailto:donovan.taylor@sky.com)

[www.greenstar-boiler-repairs.com](http://www.greenstar-boiler-repairs.com)

Caring about your environment and providing an honest, professional & reliable service you can trust



**G W**

## Tree Stump Removal

Commercial and residential.

Fully insured, qualified and professional.

Your property left neat and tidy.

Happy to give quotes with no obligation.

Ring Sam: 07787095668 or 01299832549

Email: [sam@gwstumpremoval.co.uk](mailto:sam@gwstumpremoval.co.uk)

### Shelf Development: Confessions of a Compulsive Gardening Book Collector

First, the good news - this is not going to be yet another 500-word diatribe about the atrocious weather (at least at the time of writing). Nor will it be about how it has decimated my carefully curated plans for the Neen Savage Open Garden event. I realise that my moaning isn't going to address any of these headaches, and, let's face it, if you're a fellow gardener, you already know my pain.

No, instead, I want to use this month's ramblings to share a guilty secret—I have a problem with no obvious cure. I can't stop buying books—gardening books, to be specific.

Monty Don? Yep – I've got pretty much his entire canon. Despite the inevitable fact that they get just a tad repetitive, I keep buying them.

Adam Frost? Of course - who doesn't love his practical advice and 'gardening geezer' approach?

But my favourite has to be Dan Pearson – now that's a writer! His books are not just about gardening; they are about the very essence of life, distilled into prose and pictures that can make even the most knackered gardener delight in their little patch of earth. If you love powerful and evocative writing, check out his work - it's beautiful and captivating. And while you're at it, listen to his Desert Island Discs from a few years back. It's like taking a walk with an old friend who happens to know everything about plants, the seasons, and life in general.

Anyway, back to my affliction. My bookshelves are groaning under the weight of these tomes, but I can't say with complete honesty that I've read them all. Sure, I've looked at the pictures, but it's not the same as reading the carefully constructed prose, is it? A friend calls this

approach to book buying "Shelf Development" – but then again, they suffer the same affliction, albeit with books on cricket.

The thing is, there are gardening books of all sizes and specialisms. Take the following list of *real* books written by *real* people and, according to Amazon, consumed by *real* readers. Exhibit A is "*The \$64 Tomato: How One Man Nearly Lost His Sanity, Spent a Fortune, and Endured an Existential Crisis in the Quest for the Perfect Garden*" by William Alexander. This book is a study of the extreme lengths one man went to to grow a tomato. There for the grace of God...

Then there's "*Atomic Gardening for the Layman*" by Muriel Howorth, a book all about using atomic energy to enhance garden productivity. Or "*Sunbeams May Be Extracted From Cucumbers, But the Process is Tedious*" by David Daggett. Any idea? Nope - me neither.

It must be said that "*Everything I Know about Women I Learned from My Tractor*" by Roger Welsch caught my eye. It's never too late to learn, eh, chaps?

So, in conclusion, when the rain is pouring (even though it's bloody June!), I advise taking a deep breath, making a cuppa, and settling down with a good gardening book. It's as close as you'll get to the real thing at the moment. And who knows? Maybe you'll discover a new passion or a new author to add to your own groaning bookshelves. At the very least, you'll be in good company, surrounded by words and worlds crafted by people who understand that the real joy of gardening isn't just in the doing but in the dreaming, the planning, and, yes, the reading.

*Simon*



## TWS Kidderminster, are a premium home improvement company, offering bespoke windows, doors, and roof systems with a high-quality finish at competitive prices.

With over three decades in the industry we pride ourselves on offering extensive knowledge and a service you can rely on.

As comprehensive home improvement specialists, we take pride in installing a wide range of double-glazed products. TWS work with industry leaders and our employed fitters are CERTASS registered.

Investing in our products will not only visually enhance your property but also offer the industry's best in thermal performance technology and high security. All of our products are made to measure and can be customised in an array of colours and finishes to suit your home.

Walk in anytime! The showroom is open 6 days a week including 9am to 4pm on Saturdays, you can even bring your dog as our showroom is dog friendly too with fresh water, toys and treats to hand!

[www.twswindowsanddoors.co.uk](http://www.twswindowsanddoors.co.uk) [sales@twshq.com](mailto:sales@twshq.com) 01562 822855 Unit 5, Lupin Works, Worcester Rd, Kidderminster DY10 1JR



Ground Floor Office Suite,  
Upper Baveney Park,  
Cleobury Mortimer,  
Kidderminster,  
DY14 8LF



Tel: 01746 718816  
Email: [cmbespokecare@outlook.com](mailto:cmbespokecare@outlook.com)





## REVIVE BATHROOMS

COMPLETE BATHROOM INSTALLATION SERVICE

07971 361901 or 01299 832484



**Complete Bathroom Installations**  
**Bathroom Refurbishment or Repairs**  
**Wet Rooms**  
**Professional Wall and Floor Tiling**

For a quality and guaranteed service, call Stuart for a free quote  
 Highly Recommended / References available - see my reviews on [www.freeindex.co.uk](http://www.freeindex.co.uk)

FOR THE BATHROOM YOU DESERVE!



## Elite Sweeps

## & HETAS Stove Installer

Professional Chimney Sweep

- ✓ Prompt, reliable & friendly service.
- ✓ Cowls and Chimney Pots fitted.
- ✓ Fully qualified and fully insured.
- ✓ Guild certificates issued after every sweep.
- ✓ HETAS Approved Installer.



**Call Eddie**    **Tel. 01299 382222 / 07895 612915**

[www.elitesweeps.co.uk](http://www.elitesweeps.co.uk)



## Hollywaste Holiday Lets


Our 2 bedroom (ensuite) cottage, sleeps up to 6 adults, situated in Hollywaste, Cleobury Mortimer. Fully equipped kitchen, open plan living room with log burner, dining area and downstairs WC. Includes Freesat and fast WiFi. There are enclosed & open decking areas outside, to take advantage of the beautiful countryside views, and a grassed area for outdoor games.

Open all year round and welcomes adults, children, 1 large dog or up to 2 small dogs


Discount of 10% available for locals simply quote "keepitlocal" at the checkout

Events we can accommodate:  
 Staycations, Pamper weekends, Shooting weekends, Wedding venue, Minimoons stays, Stargazing weekends,  
 Cookery weekends & events, Camping and caravan pitches are also available!  
 If you're interested in hiring our space or land for any event and time frame.

Tel: 07962 151322 Email: [hollywasteholidaylets@gmail.com](mailto:hollywasteholidaylets@gmail.com) FB: <https://www.facebook.com/HollywasteHolidayCottage>  
 Website: <https://hollywasteholidaylets.squarespace.com> for more information



### Glenys Turpin Reflexology



Reflexology is a non-invasive form of complementary medicine. It involves a method of treatment in which pressure is applied to the feet or hands to treat a wide range of ailments and is effective in promoting deep relaxation and well-being.

Reflexology does not claim to cure, diagnose or prescribe. It may be used alongside orthodox medicine and may be helpful with stress related symptoms and other conditions.

For more help and information contact Glenys...

5 New Road, Cleobury Mortimer. [glenturp@hotmail.co.uk](mailto:glenturp@hotmail.co.uk) 07763 332759

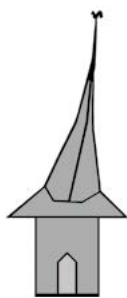
Diploma of The Bayly School of Reflexology,      Member of The British Reflexology Association

## MOBILE FOOT HEALTH CARE

Providing a thorough nail and foot  
care treatment in the comfort of  
your own home.

**Registered and insured  
practitioner.**

**STACEY WILLIAMS FHP Dip RFHP**



# Cleoburrs

**CARDS, GIFTS, HOMEWARE, HARDWARE AND EVERYDAY ESSENTIALS!**

We have a great range of stock! Competitive prices AND We are open 7 days  
Pop inside before you pop online!

**18 High Street, Cleobury Mortimer**

**Tel: 01299 489590**

**Email: [cleoburrs.onthehighstreet@gmail.com](mailto:cleoburrs.onthehighstreet@gmail.com)**

**Like our Facebook page CLEOBURRS**

## BODEN & SON Milk est. 2013

Not only do we deliver fresh Mawley Milk from the farm to your doorstep,  
we also deliver: cream , eggs, butter, fruit juice & now.....



Ashley's fresh bread

**Telephone: 01584 891550**

**EMAIL [boden6400@gmail.com](mailto:boden6400@gmail.com)**



## Hobbs Building Services

EST 25Years.

A Total Plastering, Maintenance and Building Service for your home,  
business and outbuildings.

Insurance work undertaken

Emergency call out service for general plumbing, roofing, boarding up damaged doors and  
windows. For a free quote please call;

Ian on; 07967190742

Email: [hobbsbuildingservice@yahoo.co.uk](mailto:hobbsbuildingservice@yahoo.co.uk) Or Call/Text Kelly on; 07790085307



## BESPOKE YOGA TUITION



**Relax Breathe Stretch Tone**

**One to one Yoga lessons**

**BWY trained teacher with over 15 years  
experience**

**Can travel to your home**

**Angela Kazimierczuk**

**07870 506655**

## Rachel Siddall

DipCFHP, MPSPract

Footcare in the privacy of your own  
home:

Nail trimming  
Ingrowing toenails  
Corn removal  
Thickening nails  
Callus reduction  
Verruca treatment  
Diabetic foot care



**Foot Health  
Practitioner**

**07478 007913**

# Cleobury Opticians

NHS & private eye tests ♦ FREE children's glasses

FREE NHS glasses ♦ Home visits



Opening Times-	
<u>Tuesday</u>	9am-1pm 2pm-5pm
<u>Wednesday</u>	9am-1pm 2pm-5pm
<u>Thursday</u>	9am-1pm 2pm-5pm
<u>Friday</u>	10am-2pm
<u>Saturday</u>	9am-1pm

[www.cleoburopticians.co.uk](http://www.cleoburopticians.co.uk)

16 Church Street, Cleobury Mortimer, Kidderminster  
DY14 8BX

Tel: **01299 270012**

Email: [cleoburopticians@outlook.com](mailto:cleoburopticians@outlook.com)



All Aspects of carpentry work undertaken

Level 3 City & Guilds in Carpentry & Joinery, 20 years of experience

Tel: **07854 032750**

Email: [duncpearce1@gmail.com](mailto:duncpearce1@gmail.com)

## Stewart Mumford Architectural Services Bespoke Architecture

Great value personal service backed up with extensive local knowledge, established links with other construction professionals to ensure comprehensive packages specifically tailored to individual needs.

Initial consultation free of charge.

Specialist in Works to Listed Buildings, Affordable Houses, Open Market Houses, House Extension and Alteration, Barn Conversion and Commercial Projects.



T: 01299 271068

M: 07977 921039

E: [office@stewartmumford.co.uk](mailto:office@stewartmumford.co.uk)



## A M Plumbing & Heating

- \*General plumbing
- \*Oftec approved
- \*Bathrooms
- \*Oil boilers
- \*Hot water cylinders
- \*Servicing
- \*Central heating
- \*Power flushing

**Call Today: 07565 181554**



## TOTAL PROPERTY MAINTENANCE

Fireplaces built for multi-fuel burning stoves,  
Plastering, Building & General Maintenance

**Rob Taylor**

Mobile: 07944 074540

Landline: 01299 832734

Email: [rptbuilding@hotmail.co.uk](mailto:rptbuilding@hotmail.co.uk)

# Quality firewood for sale

We source our wood from a reputable and sustainable source.

Can deliver up to 20 mile radius from Bayton (DY14 9NA).

We can do multiple and large loads.

Please call to enquire on pricing.

**John Edwards 07531025018**



## Cleobury Chiropody Janet Manley

Qualified Chiropodist  
MSSCh. MBChA  
BSYA (reflex) REIKI Master

H.C.P.C Number CH22527

Tele:- 01299-272841

Mob:- 07805-268439

Email: [janetpmanley@yahoo.co.uk](mailto:janetpmanley@yahoo.co.uk)

2, Tenbury Road,  
Cleobury Mortimer,  
Kidderminster,  
Worcs.  
DY14 8RB

## A Round Of Appaws

Professional Dog Groomer  
C&G Levels 2 & 3 Diploma

Fully Insured

Call or text Jules on  
07368359144

[aroundofappaws1@gmail.com](mailto:aroundofappaws1@gmail.com)



facebook  
f Instagram

## A. Farr Painting & Decorating

Give your home a beautiful new look....

Contact:

[andyfarr12345@gmail.com](mailto:andyfarr12345@gmail.com) 07815 855340

## Lisa Steward Ironing services

Hopton Wafers



Please call: 07581065436 for more information

A local resident has been having problems with their sewer and Seven Trent tried to fix it without success. They were contacted to have another go at it but replied that this was not possible as they didn't have the money to do it. This is a company that pays its Chief Executive well over £2 million a year (nearly £28 million in the last 10 years) whilst sewage discharges into rivers etc are increasing. In the last financial year, they have made profits of around £217 million and have paid dividends to their (mostly foreign) owners of £300 million. And they have no money...but they do have a plan to help the situation – they want to increase our bills by 37%...

Latest on the Post Office saga is that the Post Office have been asking local businesses whether they will make space for parcel pick up and drop off lockers. They can take up a fair amount of space so this could be difficult. I did hear that, some time ago, the Library offered to provide Post Office services but were turned down with no reason given. You can get stamps there though so thank you Clare.

Good news: The problems caused by inconsiderate parking and failure to pick up dog poo are solved as Police and Parking enforcement staff have been given new powers to levy on the spot fines. One problem: When did you last see either of these on the streets of Cleobury? I have a tip for parking officers: Patrol the High Street on a Friday or Saturday evening and squeeze past all the vehicles parked on the pavement before giving them a ticket. Or sit outside the Talbot on any day and ticket all those parking in the disabled bay outside Londis whilst not displaying a blue badge. Gwil Butler has recently said that Shropshire Council have already halved the projected spending deficit to only £7.5 million. Taking my advice will reduce this even further. You're welcome.

Got an electric car and need to use a public

charger?. The good news: We are well provided for in Cleobury with a total of 14 charge points: two at the Co op and six each in the Childe Road car parks. The bad news: You can rarely get near them as non electric cars are parked there. This is partly down to the fact that Shropshire Council have put the Childe Road West charge points in the disabled spots making drivers reluctant to use them due to the possibility (however unlikely- see above) of getting a ticket. In the East car park, they have failed to mark the spaces at all so everyone parks there anyway. In Ludlow, these spaces are clearly marked and do not seem to be misused. So, if the Charge Point operator should wonder why they are not being used, this is why...

Further to the item last month on the 'selection' procedure for the new Chief Constable, it now appears that the successful candidate will not now take up post due to an unspecified 'change in circumstances'. According to the 'Guardian' newspaper, it relates to 'vetting' but nothing further has been said. Presumably, the whole recruitment process will start again but at what cost?

Do you wear 'Golden Goose' trainers?. It has emerged that the company producing these, which are favoured by celebrities, employs people to 'pre distress' them as this is the latest trend. Prices for a pair vary from £400-£1700 depending on the level of bling so not sure if the distressing is extra. My top tip for purchasers: Try wearing them yourselves and they will become distressed.

As an old person (very old, some might say) I have a bus pass which is due for renewal shortly. I was about to do this when a new one appeared in the post unbidden! I never thought I would say this, but well done Shropshire Council for your efficiency. Now what about everything else?

*Ariadne J Grumpy*



Fully qualified electrician and bathroom fitter with over 30 years experience

- Electrical Installations & Repairs
- Bathroom & Kitchen Installations

Call Steve on: 07791 492 951  
[enquiries@selectrical.co.uk](mailto:enquiries@selectrical.co.uk)





Cleobury Mortimer  
 DY14 8LW  
 07825030607  
[www.littledetton.co.uk](http://www.littledetton.co.uk)

**Free delivery for orders over £30 within 10 miles**

Home Grown Meats

Rare Breed Beef, Lamb, & Pork, Sausages, Bacon & Gammon, Free Range Chicken  
**See us at the Farmers Market**

## HIS & HERS

### Dog Grooming Parlour

All breeds and  
 Cross breeds professionally  
 Trimmed and Groomed



**J. A. Guest**  
**Tel: 07790 796 027**

### Washing Machine Repairs and Sales

**JULIAN BREAKWELL**  
**Telephone 07791 633 746**  
 Repairs to all makes, including  
 Bosch, Hoover, Zanussi and  
 Hotpoint  
**NO CALL OUT CHARGE**  
**FIXED LABOUR COST**


## Ever After

- Breakfast club
- After school club
- Holiday club
- "Forest schools" outings
- 15hrs education funding
- 24U funding
- Age ranges: 3 months to 11 years



**Day Nursery**  
 Cleobury Mortimer  
 Please contact us on 01299 272 777  
 Or Call in to see us anytime.  
 Friendly, Caring Environment for the Community

## David Ward firewood



Do you need a dependable consistent quality supply of seasoned or kiln dried hardwood and softwood firewood?

Cut and split to suit and delivered in breathable 1.2-cubic metre bags, so no need to restack.

Small delivery vehicle, fitted with crane, can deliver to most locations and situations.

**CALL DAVID TO DISCUSS YOUR REQUIREMENTS:**  
 Mobile: 07866 441154

## Piano tutor

*Francis Engleheart*

*All ages — I specialise in teaching adults without previous experience*

*I come to you*

**07710 288526 • [fengleheart@hotmail.com](mailto:fengleheart@hotmail.com)**

**S. L. CARTER**  
 PROFESSIONAL PAINTER AND DECORATOR

---

PLASTERING, TILING, COVING AND GLAZING

CLEOBURY MORTIMER  
 TEL: 01299 272868  
 MOBILE: 07815 483 029



W. BROWN

PLUMBING & HEATING

Registered  
Heating  
Business



## OIL BOILER ENGINEER

- Boiler servicing & repairs
- Worcester Bosch installer
- General plumbing work

07974121297    billejbrown75@gmail.com    @wbrownplumbingheating

## SEPTIC TANK EMPTYING

**CHARLES MAIDEN**

— EST 1988 —

**Waste Disposal Ltd**



Routine & Emergency emptying of Domestic & Commercial:-

- SEPTIC TANKS
- TREATMENT PLANTS
- ALL SEWAGE SYSTEMS
- BLOCKAGE CLEARANCE
- GREASE TRAPS

Throughout Herefordshire, Shropshire & Worcestershire.

Call us now for your free quote.

**01885 482305**

**info@charlesmaidenbromyard.co.uk**

**www.charlesmaidenbromyard.co.uk**

## Booton Brothers



**Construction**

**Rich: 07445298747**

**Mike: 07853225401**

**bootonbrothers@outlook.com**

**All building work undertaken**

## CLEOBURY CONCERT BRASS

A busy Summer for the band with Pershore MSB on 6<sup>th</sup> July, Ironbridge Brass Festival on the 13<sup>th</sup> and a new engagement for us playing at Mogfest Weston Park on 27<sup>th</sup>.

Moving into August we will be at Abbey Park in Pershore on the 4<sup>th</sup> and a double whammy weekend of Ashford Carbonel Fete on 17<sup>th</sup> followed by Shrewsbury Quarry on 18<sup>th</sup>.

Our band continues to thrive under the baton of David Nicholson and we enjoy playing a variety of pieces in our current repertoire. Make a date to come and 'listen to the band'; you won't be disappointed.

If you have a special occasion coming up and are looking for something a bit musically different, you might like to consider booking the band to play, we can tailor the music to your requirements.

To discuss options, please contact our secretary Amanda on 01584 891199.

*Katie Griffiths*

## HISTORY UNITED

Two further activities are planned as part of the *Beacon on the Hill* project at Doddington. On August 1st Alf Jenkins will lead a walk through the evidence of industrial workings around Titterstone Clee Hill. For centuries the hill has witnessed industries such as lime production, coal mining, glass and brick making, pottery and

stone quarrying. These have left scars in the landscape which give it a character and arose interest in its past. This is for anyone with an interest in the industrial and social history of this area wishing to discover more and share their own knowledge.

For tickets, visit <https://www.ticketsource.co.uk/st-johns-church-doddington-south-shropshire/t-jzljdeq>

To follow this, we are holding an event on 3rd August 2-5pm at Clee Hill Village Hall. We will be showing images and film from Clee Hill's past as well as hearing some music from Sid Peacock, our songwriter in residence. Can you help us identify people, places and events from the past? If you have old photos, documents or objects relating to the Clee hills, please bring them along. Our team will be on hand to record them so we have a community collection which everyone can enjoy and learn from.

If you want to know more about the project or have an image or object to share, please get in touch with Jim: [jim@grevatte.co.uk](mailto:jim@grevatte.co.uk)

## WOOD WORDS

Well done editor Uncle Jim and all others that attended our taster session on the evening of June 10<sup>th</sup> – clearly evidence of hidden talent was on show and hopefully will be so at our next taster session on Monday July 8<sup>th</sup> (6.30pm onwards). Anyone welcome, young and old!

The members' club competitions are continuing and future events for entry include Horton Shield July 6<sup>th</sup> (doubles) also doubles Reed Cup July 13<sup>th</sup> and Allun Martin Cup 27<sup>th</sup> July (singles).

Recent competition winners include: Warren Euddof/Rae Livesey Jules Cup, Dave Warrington/Jean Wilson won the Jack in The Box Trophy, Ladies Cup – Jean Wilson, and Mottershead Cup triples event, Sean Woodhouse, Chris Cowdell and Dave Booton.

By the time of publication club Captains Day will have come and gone! (30<sup>th</sup> June). Trust captain Graham Kitchen had a successful day with suitable weather. Members of Cleobury WI held a second bowls event on June 17<sup>th</sup>, such was the appeal of their May event.

At the last club admin meeting details of this season's sponsorship by Hobsons Brewery were confirmed and hopefully their support will be as successful as their brewing. Members of our club league teams will wear suitably branded shirts in future fixtures.

All further information is available on club website [cleoburybowls.org.uk](http://cleoburybowls.org.uk) – finally a reminder that Sunday league fixtures are suspended for July 7<sup>th</sup> due to the Cleobury Run road closures.

Yours in Bowls

*Smiffy* 07494 016137

# Cleobury Mortimer Golf Club

At Cleobury Mortimer Golf Club we believe that a really enjoyable golf day takes more than just a great golf course. We make sure that your whole experience, from the friendly welcome in the golf shop to your drinks and meal in our relaxed clubhouse, is all part of a day you'll remember.



## Everyone Welcome

Membership available.

Just some of the many benefits of joining Cleobury Mortimer Golf Club

- Access to full length 27- hole golf course
- Opportunity to achieve and maintain a handicap
- Family, Friendly Environment
- Playing opportunities at all times of the week
- A range of competitive opportunities
- Open dawn to dusk 363 days a year.

*We look forward to meeting you at Shropshire's friendliest golf club.*



01299 271 112 (ext 1)

pro@cleoburygolfclub.com

www.cleoburygolfclub.com



CONSERVATORY  
INSULATION SOLUTIONS

Worcestershire based

Special offer:  
Save 25%  
+ 0% VAT

*Is your conservatory too hot in the summer ?*

*Is your conservatory too cold in the winter ?*

- Warmer in the winter
- Cooler in the summer
- Normally fitted in just 1 day
- FREE in home quote
- Year round use of your conservatory
- VAT FREE GOVERNMENT APPROVED INSULATION



**EXTRA 10% discount for**

NHS / Current & Retired | Blue Light Card Holders | Saga Members

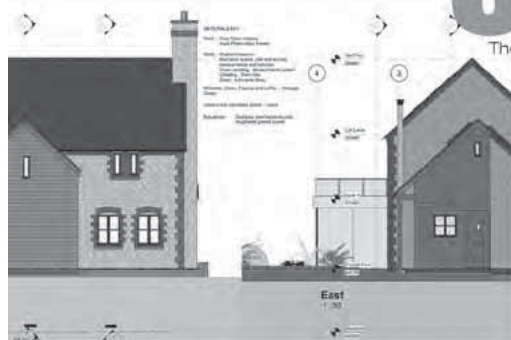
**Freephone: 0345 5480078**

[www.conservatoryinsolutionsolutions.com](http://www.conservatoryinsolutionsolutions.com)



**SEVERN**  
architects

The Guard House, Cleobury Mortimer, DY14 9BD



We are a friendly Shropshire based architectural practice with plenty of experience in all kinds of residential projects large and small. Using the latest 3D software package and technology we can turn your virtual dream home into a reality.

Contact us now on 07825 759484 or email  
[julie@severnarchitects.co.uk](mailto:julie@severnarchitects.co.uk)  
for your consultation

- Our Architectural Design Services include
- Design & Feasibility Studies
  - General project Advice
  - 3D Modelling
  - 2D CAD Drawing
  - Planning Advice and Submissions
  - Building Regulation Applications
  - Tender & Construction Drawings
  - Contract & Project Management

**RIBA**

Chartered Practice

# festival at the edge

19-21 July 2024

Hopton Court, Cleobury Mortimer,  
Kidderminster DY14 0EF



The longest running international storytelling festival in England

Immerse yourself in the ancient art of storytelling.

Be prepared to have your spine tingled, your jaw dropped, your senses awakened! Suspend your disbelief and savour this delightful artform with stories for all ages.

We have an amazing line up of artists including...

- Storytellers - Len Cabral, Shonaleigh, Sahand Sahebdivani
- Musicians - Ciderhouse Rebellion and Jesse Summerhayes (poet), Dan Walsh, Time Bandits

Plus lots more on our website & more to be announced!

- Dedicated children's programme and circus activities
- International and top-class performers together with the best new talent
- Exciting workshops and activities including: storytelling and music, tai chi, story rounds, and much more
- Excellent locally sourced food and ales in our Speakeasy bar
- Late night story sessions around the firepit

*Stories in your heart and songs in your head. Listen to them, tell them, sing them, and join in this fabulous experience.*

For more information:

[www.festivalattheedge.org](http://www.festivalattheedge.org)

email: [info@festivalattheedge.org](mailto:info@festivalattheedge.org)

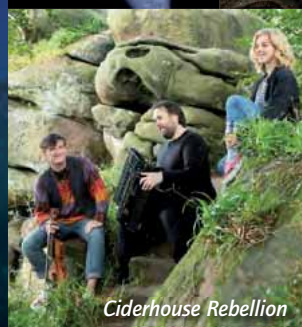
tel: 07544 044 126



\*Len Cabral

\*Shonaleigh

Dan Walsh



Ciderhouse Rebellion



Sahand Sahebdivani



Time Bandits

\*Photo Credits: Len Cabral - Jim Hooper, Shonaleigh - Katherine Betteridge



taking **storytelling** to the edge

## KINLET C OF E PRIMARY SCHOOL

Love to Learn – Learn to Love



- Outdoor play areas
  - Small family atmosphere
  - Kind – Inspire – Nurturing – Learning – Eco-friendly -Teamwork
- [www.kinlet.shropshire.sch.uk](http://www.kinlet.shropshire.sch.uk) [admin@kinlet.shropshire.sch.uk](mailto:admin@kinlet.shropshire.sch.uk)  
Telephone: 01299 841210

# KIDDERMINSTER

## SELF STORAGE AND REMOVALS



### STORAGE

Free insurance . Flexible Terms  
Fixed Price Guarantee . No hidden costs

### REMOVALS

Professional Removal Service  
Est. over 25 years

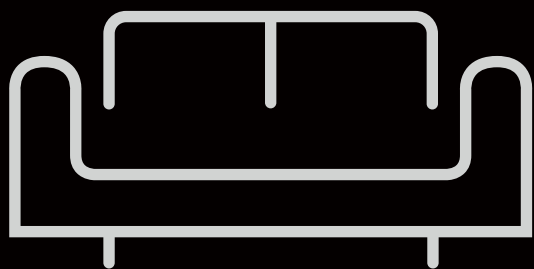
### PACKAGING MATERIALS

Boxes, Bubblewrap, Tape Etc. for sale  
Free local deliveries on orders over £20

**01562 744088**

[www.kidderminsterselfstorage.co.uk](http://www.kidderminsterselfstorage.co.uk)

Unit 11 Finepoint Way, Stourport Road, Kidderminster DY11 7FB  
[info@kidderminsterselfstorage.co.uk](mailto:info@kidderminsterselfstorage.co.uk)



# EVERYTHING INTERIOR UPHOLSTERY

## REUPHOLSTERY SERVICES:

- AUTOMOTIVE
- CARAVANS
- CAMPER VANS
- TRADITIONAL & MODERN
- COMMERCIAL & BESPOKE
- DOMESTIC
- CARPET & UPHOLSTERY CLEANING  
*(in partnership with WE GLEAM)*

**OVER 30 YEARS EXPERIENCE**



## CONTACT US TODAY

Unit 19 Old Station Business Park, Cleobury Mortimer, DY14 8SY  
 07961 712683 / 07961 792103  
[www.everythinginterior.co.uk](http://www.everythinginterior.co.uk)  
 email: [everythinginterior@outlook.com](mailto:everythinginterior@outlook.com)

Bespoke framing and mounting for:

- Artwork
- Photographs
- Canvases



## The Framing Studio Cleobury Mortimer

Paul Serrell-Cooke  
07791 378240

*Bringing artwork and images to life*



**LUDLOW  
SALVAGE**

~ Est 2017 ~

Reclaimed Building Materials  
and Architectural Antiques

Station yard, Station road,  
Woofferton, Ludlow SY8 4AW



**07805 312168**



**ludlowsalvage@gmail.com**



**/ludlowsalvage**



**/ludlowsalvage**

**WWW.LUDLOWSALVAGE.CO.UK**

**LUDLOW  
FIREWOOD**

~ Est 2019 ~

Suppliers of Premium Grade Ready  
to Burn Firewood, Beautifully Crated  
and Delivered to Your Door



**07949 318014**



**ludlowfirewood@gmail.com**



**/ludlowfirewood**



**/ludlowfirewood**

Station yard, Station road, Woofferton, Ludlow SY8 4AW

**WWW.LUDLOWFIREWOOD.COM**

Available in Barrow bags and  
nets for all your access  
requirements.

## CLEOBURY SEAFOOD & FREEZER CENTRE

6, Newhouse Farm, Tenbury Road , Cleobury Mortimer DY14 8RD

For enquiries or to place an order, phone Ann 07711875553

### Top most popular products

*Fish Cod, Haddock, Kippers, Sea bass, Red Snapper, Tuna, Swordfish, Salmon & more*

*Seafood Calamari, Whitebait, Scallops, Raw King Prawns, Fish pie mix*

*Bennet Ice Cream*

*Curries and Mr Daves Curries*

*Dairy Cream Cakes Éclair Finger Donut, Scones , Apple Turnovers*

*Frozen Fruit*

*Blueberries, Blackberries, Blackcurrants, Summer Fruits, Raspberries & more*

*Hot Puddings Treacle, Sticky Toffee, Chocolate, Jam*

*Suet Puddings ,Steak and Kidney and Steak and Ale*



**Gluten Free, Vegan, Dairy Free, Vegetarian**

**I have a new Website under construction, and will be ready very soon**

**Opening Times** Closed Monday, Tuesday to Friday 9.30 to 4.30 Saturday 9.30 to 12.30

# ONE STOP ROOFING

## The Flat Roof Specialists

- Rubber, Fibreglass & Felt
- Re-pointing & Chimney Repairs
- Fascias & Guttering



**Take advantage of our offer:** Replace your flat roof Making EPDM (rubber) your choice for a long lasting, weatherproof & high slip resistant membrane, with a lifespan of 50 years, **get it for the same price as felt**, which only carries a 10 year guarantee!

Replace your flat roof with EPDM (rubber) & add a skylight or lantern, giving extra light to your room starting **from as little as £400!!**

**Freephone 0800 0855277 \* 07538 471274**

**Www.onestop-roofing.co.uk**

**onestoproofinguk@gmail.com**

Family business est. 35 years.  
All repair work undertaken

Proud members of  
**Checkatrade.com**  
Where reputation matters

## Community Contacts for Clarion Readers

CEMETERY ADMINISTRATOR	Theresa Ray	<b>07703 965 064</b>	<a href="mailto:theresa.ray@cleobury.org.uk">theresa.ray@cleobury.org.uk</a>
CLEOBURY COUNTRY CENTRE		<b>01299 272300</b>	In Love Lane, 9 to 5 Mon to Fri.
CLEOBURY DENTAL PRACTICE		<b>01299 271747</b>	<a href="http://www.cleoburydental.co.uk">www.cleoburydental.co.uk</a>
CLEOBURY CARERS	Michelle	<b>01743 341995</b>	<a href="mailto:carerssupport@shropshire.gov.uk">carerssupport@shropshire.gov.uk</a>
CLEOBURY COMPASSIONATE COMMUNITIES	Katja Jones	<b>07966 080111</b>	Tuesday and Thursday at the Medical Centre
CLEOBURY LIBRARY		<b>01299 272301</b>	Open 9 to 7 Mon, 9 to 5 Tues/Fri, 10 to 1 Sat.
LOCAL POLICE			
CLEOBURY MORTIMER SCOUTS	Lowri Hughes		<a href="mailto:cleoburybeavers@gmail.com">cleoburybeavers@gmail.com</a>
CRIMESTOPPERS	Free Police contact	<b>0800 555 111</b>	Talk in confidence, to report any crime.
DOMESTIC VIOLENCE HELPLINE		<b>0800 783 1359</b>	Women's Aid, 24 Hour support:
HOME FROM HOSPITAL	Age UK	<b>01584 878046</b>	Help over the first weeks back home
MARKET HALL	Sam	<b>07385 698574</b>	<a href="mailto:markethall@cleobury.org.uk">markethall@cleobury.org.uk</a>
MEDICAL CENTRE		<b>01299 270209</b>	Out of surgery hours, use the Shrop Doc Service.
SHROPHIRE DOCTORS		<b>111</b>	Service available evenings and weekends
THE MEN'S SHED	Pete Blackburn	<b>07776 243 584</b>	<a href="mailto:petblack@me.com">petblack@me.com</a>
THE PHARMACY		<b>01299 270219</b>	Closes for half day on Saturday. Delivers
ST ELIZABETH'S R.C CHURCH	Angela Flowers	<b>01299 270318</b>	Sunday Mass at 9.00am
NIGHTINGALE NURSING FUND	Rosemary Abbiss	<b>01746 718451</b>	
TOWN COUNCIL (Clerk)	Dorothy McBride	<b>01299 271154</b>	
St MARY'S YOUTH PROJECT	Mark Greaves	<b>07828 116810</b>	<a href="mailto:mark.stmarys@live.co.uk">mark.stmarys@live.co.uk</a>
SHROPSHIRE COUNCIL		<b>0345 678 9000</b>	
S. SHROPSHIRE YOUTH FORUM		<b>01584 874922</b>	
VOLUNTARY CAR SCHEME	Mandy Smith	<b>01299 666119</b>	
WASTE DISPOSAL		<b>0345 678 9007</b>	The contractor is Veolia
WATER SUPPLY EMERGENCIES	Severn Trent	<b>0800 783 4444</b>	
NEWLIFE CHURCH	Pastor E Stirrup	<b>01562 630595</b>	Sunday services at 10.30



## Our Services



**SOLAR PV**



**EV CHARGERS**



**AIR SOURCE  
HEAT PUMPS**



**GROUND SOURCE  
HEAT PUMPS**



**BATTERIES**



**VENTILATION**



**UNDERFLOOR  
HEATING**



**RADIATORS**

## About us

EnergyZone is one of the largest renewable energy companies in the Midlands, having provided domestic and commercial sustainable energy solutions for over 20 years.

Based next to Hobsons Brewery in Cleobury Mortimer, we are your local experts in renewable and low carbon energy.

The current energy crisis has been incredibly eye-opening as we come to realise how reliant we are on other countries for fuel. Wouldn't it be nice to become more independent and less reliant on the volatile energy prices... well, that's where we can help!

### What can EnergyZone Offer?

- With over 130 years combined experience, we are keen to help with all your energy enquiries and deliver impartial advice.
- Totally free desktop quotes for Solar PV and Heat Pump systems completely unique to your property to show you exactly how much you could save.
- Self-consumption gadgets to help you utilise all of your generated energy. Whether its a Smart Electric Car Charger, Immersion Diverters or Battery Storage Units, we can help you become more independent from the grid.
- Ensure your heating is as efficient as possible, through underfloor heating installation, radiator upgrades and smart hot water cylinders.
- Advice on all Government Grants and Incentives.
- Local support with annual servicing through our in-house EZCare package.

**Get in touch today to start renewing your energy!**

For your peace of mind, EnergyZone has the following accreditations:



01299 270011



[sales@energyzone.co.uk](mailto:sales@energyzone.co.uk)



## Ludlow Motors

### Vauxhall

The **New Corsa** is available with a petrol or fully electric engine. A next-generation 51kWh battery with all-electric range of up to 246 miles.



The **Astra** 100% Electric. 114kW Electric motor (158PS) with 54kWh battery. 258 miles of Electric range. 0 grams of CO2 emissions.

**Mokka Electric** is powered by a next generation 50kWh lithium-ion battery. It'll take you up to 209 miles (preliminary WLTP)1 on a single charge.



### Suzuki

Enjoy the power of an 83 HP engine, with a CO2 output as low as 106 g/km (WLTP combined). When you choose a **Swift** with mild hybrid, a little goes a long way.



Designed for all conditions, and we don't just mean the weather. From school runs to weekend getaways, the **Vitara** takes you anywhere you want (or need) to go.

Our latest **S-Cross** comes with the choice of either Mild Hybrid or Full Hybrid technology, supported by a dynamic and responsive petrol engine.



### Service

Routine servicing is an important part of keeping your vehicle at its best condition, delivering a top driving experience. Drive confidently knowing your vehicle is working at its best with us.



**We service all popular makes & models.**

**All Makes & Models Serviced from £199. Fully Electric Servicing From £99.**

Spread the cost with a Service Plan from £17.99 per month.

### Motability Scheme

Nothing should stop you living a full life, with independence and freedom. The Motability Scheme opens the doors to those things, with worry free motoring that helps you to keep moving.



Motability from Worcester Car Sales - 400523 means:

**The everyday freedom of having everything included.**



Your insurance, servicing, maintenance and full breakdown cover included.

## The Cleobury Clarion Social Calendar for July

Mon. 1st.	Alf Jenkins leads a walk through the old workings on Clee Hill	PAGE 44
Tue. 2nd.	2.00. Carer Support Group meet at St Mary's Place. Free to attend.	
Wed. 3rd.	GARDEN AND FOOD WASTE BINS EMPTIED	
	2.00 'Clee Hill's Past' history meeting at the village hall.	PAGE 44
	6.00. Late Opening at the Food Bank in the Market Hall.	
	7.30. Whist Drive at Doddington Village Hall. Sonia 01584 890874.	
	8.00 Dominoes Revival at the Old Lion, Lower Street.	PAGE 5
Thu. 4th.	10.00 Rock Pathfinders step out from Offa's Dyke Centre, Knighton.	PAGE 11
Sat. 6th	12.00 to 9.00pm Hobsons Summer Party.	PAGE 29
Sun. 7th.	12.00noon. Plant sale at Coppice Gate Farm, Lye Head, Bewdley.	PAGE 5
	THE CLEOBURY RUN - LOOK OUT FOR ROAD CLOSURES.	
Tue. 9th.	7.00. Stuart Edmunds talks to Clee Hill Wildlife Group about Pine Martens.	PAGE 5
Wed. 10th	GENERAL WASTE BINS EMPTIED	
	10.00 Walking for Health have an AwayDay, starting from Arley River Bridge.	
	10.00 CoCo Coffee Morning at the Market Hall.	
Fri. 12th.	10.00 Coffee Morning at Doddington Lodge, Clee Hill.	PAGE 32
	8.0 Bingo Night at Doddington village hall.	
Sat. 13th.	The Volleyball club presentation evening at the Sports & Social Club.	PAGE 7
Mon. 15th	7.30 The Reading Group gather at the town library.	PAGE 13
	8.00 Cleobury Gardeners meet at the Parish Hall	PAGE 15
Wed. 17th.	GARDEN AND FOOD WASTE BINS EMPTIED	
	7.30 Whist Drive at Doddington village hall.	
Thu. 18th.	10.00 Rock Pathfinders walk from The Mason's Arms, Wichenford WR6 6YA	PAGE 11
Fri. 19th.	Cleobury W.I. visit Three Aces Dairy Farm and The Boyne Arms.	PAGE 27
Sat. 20th.	9.00 Cleobury Country Farmers Market in and around the Parish Church.	
Sat. 20th.	7.30 Flicks In The Sticks offers 'A Haunting In Venice' at the Parish Hall.	PAGE 14
Sat/Sun. 20/21st	Cleobury Kite Festival in the Lacon Childe Sports Field.	PAGE 5
Wed. 24th.	GENERAL WASTE BINS EMPTIED	
	10.00 Walking for Health step out from the Market Hall.	
	10.00. CoCo Coffee Morning at the Market Hall.	
Fri. 26th	8.00 Bingo Night at Doddington village hall.	

Mon. 29th 7.30 Nearly Dead Poets' Society meet at the library. Fine words with wine. PAGE 5

Wed. 31st. GARDEN AND FOOD WASTE BINS EMPTIED

Whist Drive at Doddington village hall

### AND LOOKING AHEAD TO AUGUST...

Wed. 7th. GENERAL WASTE BINS EMPTIED

7.30. Whist Drive at Doddington village hall.

### REGULAR EVENTS OF LOCAL INTEREST

Tuesday at 2.00: The Friendship Club meets at the Parish Hall.

Wednesday 10.00 to 12.30: Pay and Play for Over 50s at Highly Leisure Centre.

Thursday at 11.00: Drop-in morning at the Parish Church. Take tea and share a chat.

2.00: Tina Hobin's Exercise for the Mature, St Mary's Place, Love Lane.

7.30. Tina Hobin's Ancient Egyptian Dance and good health. In the Market Hall.

## LET'S BEAT THE SCAMMERS

As the better weather nearly approaches, the scammers turn to the scams relevant to the season. Holiday Scams and Romance scams are on the uptake at the moment. We are being warned that approaches either by email or text message or even phone calls offering holiday opportunities that look too good to be true, are just that! They are not true. If you are planning a late booking or a holiday, please use a recognised organisation ideally one with ATOL registration or a web site you know is genuine.

Romance scams are often initiated again either through social media or by phone or text. Scammers often assume a very plausible persona and entice you into their world with gentle but ever more persuasive messages eventually confessing they are falling in love with you and encouraging them to reciprocate. This is something that people who may be lonely, independent or genuinely seeking companionship may be more susceptible to.

Who are their targets?

Females over 40 years are common victims, as well as younger males, but users also need to be aware on age-related dating platforms too.

How does it work?

Basically, criminals will go to great lengths to gain the victim's trust by claiming they are in a genuine relationship and this is built up over time

- They will manipulate and exploit the victim to the extent they are persuaded they are in a real and genuine relationship
- Then, when they ask for money, the victim is convinced there is no problem with the request
- The requests can be very emotive citing reasons such as medical emergencies, travel costs, payment of fines or taxes, or even claiming their bank account has been frozen

Tell-tale signs a friend or family member is involved in a Romance Scam

- They may be very secretive about their relationship or provide excuses for why their online partner has not video called or met them in person.
- They may be unwilling to discuss their online relationship
- They may express very strong emotions and commitment to someone they have only just met
- They have sent, or are planning to send, money to someone they have not met face-to-

face. They may take out loans or withdraw from their pension to send money.

Stay safe

- Never send money to someone you have never met in person
- Never part with your bank or personal details to strangers online however genuine they claim to be
- Always seek advice from somebody trusted before parting with any money in any format, whether it is bank transfers, PayPal, Gift Cards or bitcoin currencies.
- Profile photos are very often fake, you can research any image by doing a "Reverse Image" search to find photos that have been copied from elsewhere.
- Never share images of yourself that you would not want your own family and friends to see.

Take Five to Stop Fraud

STOP: Taking a moment to stop and think before parting with your money or information could keep you safe.

CHALLENGE: Could it be fake? It's OK to reject, refuse or ignore any requests. Only criminals will try to rush or panic you.

PROTECT: Contact your bank immediately if you think you've fallen for a scam and report it to

Action Fraud

ALWAYS REMEMBER:

- Avoid disclosing security details
- Emails, Phone Calls and Texts may not be authentic
- Always make direct contact with any organisation by using a genuine phone number
- Stop and Challenge any unexpected requests
- Protect others by reporting Fraud and Scams

If you've fallen for a scam,

report it to Action Fraud on 0300 123 2040 or via [actionfraud.police.uk](https://actionfraud.police.uk)

Scam Text messages can be forwarded to 7726 to help phone providers take early action and block numbers that generate spam on their networks. If you think your bank account or personal banking details have been used fraudulently, then use the short phone number - 159 - to contact the Fraud Prevention Department of most major UK banks.

*Nigel Reid*

BOOK YOUR  
MOT WITH US



# LEWIS MOTORS KINLET

☎ 01299 841 391



## SERVICING & REPAIRS TO ALL MAKES & MODELS

- |                       |                               |                   |
|-----------------------|-------------------------------|-------------------|
| ■ Clutches & Cambelts | ■ Exhausts, Batteries & Tyres | ■ Wheel Alignment |
| ■ Diagnostics         | ■ Recovery                    | ■ Welding         |

f Follow us on Facebook: LewisMotorsKinlet

## Paul Harding



## Tree Services

- Tree surgery and felling
  - Woodland thinning & maintenance
  - Hedge trimming & grass cutting
  - Supplier of hardwood logs, kindling and garden bark
- NPTC certified fully insured. Domestic and commercial work undertaken.  
Tel 01584 890 993 Mob 07970 878 224

## BILL'S QUALITY METALWORK

5 GREENFIELD ROAD, CRAVEN ARMS, SY7 9QU

Manufacturing Made to Measure Gates and Railings

~Balconies and Staircases, Handrails, Carports,  
Structural Steelwork and Mobile Welding Service.

Phone Bill on 07973 248 016 or 01588 673 914

Office for a free quote

## LUDLOW DOG DAY

At 10am on Sunday 28 July 2024 the gates of Stokesay Court will open for a fun-packed day for dogs and their owners and admirers at the start of another Ludlow Dog Day. For the event's tenth anniversary year, Ludlow Rotary Club will be welcoming back inspirational displays and helpful training tutorials which dog owners can try at home as well as holding a wide range of fun dog competitions and activities.

Held in the beautiful grounds of Stokesay Court, situated approximately 6 miles north of Ludlow and just off the A49, the day is all about fun for the whole family, particularly our furry friends. Dogs can take part in over 21 competitions, from the scruffiest mutt and waggiest tail to the cutest puppy.

Money raised in past years has enabled Ludlow Rotary to distribute over £140,000 amongst a wide range of charities and community organisations. The club plans to use this year's event to support 'Ludlow Rotary

Cares', the club's community grants scheme, as well as other deserving causes.

For more information on this opportunity to enjoy a wonderful day in a glorious setting while supporting numerous community and charitable needs, see [www.ludlowdogday.org.uk](http://www.ludlowdogday.org.uk).



DEADLINE FOR THE AUGUST CLARION : JULY 22nd

Editor and Advertising Sales: Jim Reynolds, 4 Childe Road, Cleobury  
Mortimer, Shropshire, DY 14 8PA

Tel: 01299 270642 Mobile: 07410 977 212 E:[editor@cleoburyclarion.co.uk](mailto:editor@cleoburyclarion.co.uk)

Web: [www.cleoburyclarion.co.uk](http://www.cleoburyclarion.co.uk)

Printed by Badger Print. Tel: 01952 730511

---

Collect your Clarion in Cleobury from: Londis, Cleoburrs, Cleobury Cafe,  
Severn Hospice Shop, Mid Counties Co-op, Purslows, The Library.

And out in the county:

The Blount Arms, Heath Farm Meats, Clee Hill Stores, Clows Top Store, The  
Colliers Cafe, Sun & Slipper, Mamble; Hopton Bank Service Station; Ludlow  
Library; Fighting Cocks, Stottesdon; Duck Inn, Chorley; Live & Let Live, Neen  
Sollars; Eagle & Serpent, Kinlet; Parker Motors, Kinlet.

Also from the parish churches in: Cleobury Mortimer, Bayton, Doddington,  
Hopton Wafers, Neen Savage, Neen Sollars and Stottesdon.

---

---

#### **How to contact the Town Council**

Telephone: 01299 271154 or 07483 112290

Email: [council@cleobury.org.uk](mailto:council@cleobury.org.uk)

Speak to us at the Councillor Surgeries held on the third Saturday of every month in the Market Hall.

#### **Councillor Surgery**

CLlr Tysall and CLlr Abbatiello attended the monthly Councillor Surgery held in the Market Hall, alongside the Farmers Market, on Saturday 15<sup>th</sup> June. Issues raised included concerns over a Shropshire Council tree on Catherton Road and parking issues in residential areas. If you have an issue you want to raise, you can contact the office on the details above or drop into the next monthly Councillor Surgery on Saturday 20<sup>th</sup> July 2024.

#### **D-DAY Commemoration/Celebration**

The 80<sup>th</sup> Anniversary of the D-Day landings was commemorated on Thursday 6<sup>th</sup> June. In Cleobury, we worked with St Mary's and the British Legion to mark the occasion. A commemorative flag was flown for the week and the bell-ringers took part in the 'Ring out for Peace' at 6.30pm. The Sports and Social Club opened for refreshments with members of the British Legion lighting our Beacon on the Playing Field at 9.15pm, following a reading from Reverend Buck.

#### **Cleobury Festival**

Thank you to everyone who helped plan and organise the Festival on Saturday 22<sup>nd</sup> June. A huge thank you also to the Sports and Social Club for being open all day, DJ Paran, Birch Hill Dog Rescue for the Dog Show, as well as all our entertainers, performers and stall holders for their efforts. The day was a great success and we are already starting to plan for next year. If anyone would like to join the Festival Committee then please contact us.

#### **Councillor Vacancy**

The Town Council currently has a vacancy for a Councillor. If you have good local knowledge and are interested in our community, have good communication skills, are keen to work with community partners and can attend monthly Town Council meetings then please consider joining us. For more information, please contact us on the details above.

#### **Grants available to community groups**

The Town Council has some funding available to support local community groups based in Cleobury Mortimer. Grants are available for activities or for equipment. If you have a project or activity which would benefit from some financial support, please contact the Town Council for further information and an application form.

#### **Dates for your Diary**

**Next Council Meeting – Monday 1<sup>st</sup> July 2024 at 6.30pm, at the Cleobury Country Centre.**

**Councillor Surgery – Saturday 20<sup>th</sup> July 2024, from 10am – 12noon, at the Market Hall.**



# **eme** **CLEOBURY**

## FACILITIES INCLUDE:

**Gym**   
**Exercise Classes**   
**Sports Hall**   
**Outside Astro Pitch**   
**Netball**   
**Tennis Courts** 

## CLASS TIMETABLE

MON	9.15 - 10am	CARDIO PILATES & STRENGTH
	6.30 - 7.15pm	BODY PUMP
TUES	9.15 - 10am	YOGA
	10.15 - 11am	YOGA
	6.15 - 7pm	TRX
WED	5.15 - 6pm	PILATES
	6 - 6.45pm	CIRCUITS
THU	6 - 6.45pm	STEP & SCULPT
	7 - 7.45pm	SPIN
FRI	6 - 6.45pm	STRETCH & RELAX

Pre-Booking required for Exercise classes  
Book online or at the Centre

## OPENING TIMES

MON	7.30am - 10am
	10am-12.30pm GP Referral
	3.30pm - 10pm
TUE	3.30pm - 10pm
WED	7.30am - 10am
	4.30pm - 10pm
THU	4.30pm - 10pm
FRI	7.30am - 10am
	3.30pm - 10pm
SAT-SUN	7.30am - 1pm

Pre booking not required for Gym use.  
Induction or Disclaimer required  
in advance of use.



**TEME CLEOBURY**  
 LOVE LANE  
 CLEOBURY MORTIMER  
 DY14 8PE  
 ☎ 01299 271317



DOWNLOAD OUR APP



**www.teme-leisure.co.uk**