

## SERVING CLEOBURY COUNTRY

JUNE 2022

### £271,5000 NATIONAL LOTTERY GRANT TO STOTTESDON

For a small Shropshire village, population less than 400, to earn a grant worth more than a quarter of a million pounds is the stuff of dreams. That is what Stottesdon has achieved, as it plans the timetable and detail of the work that will present this lovely, quiet village to the world.

On Page 31 you'll find the story at this early stage, with some really exciting ideas outlined that will show off a church history that goes back more than a thousand years. We will be following the tale of this remarkable revival as it progresses, talking to people whose ideas are being adopted and those doing the valuable work that will preserve history for future generations to look at and marvel.

In a world where good news can be hard to find, here is a gem of a story. Wonderful!

### NEIGHBOURHOOD DEVELOPMENT PLAN PUBLIC CONSULTATION

**Councillor John Greaves has some good news:**

There will be a public consultation taking place from Friday 27<sup>th</sup> May until Monday 11<sup>th</sup> July where local residents can comment on the plan for 120 new houses and expansion of the employment area in the town.

The documents will be available to view on the Town Council website ([www.cleobury.org](http://www.cleobury.org)) and hard copies for viewing in Cleobury Country. There will also be informal drop in sessions at Cleobury Country on Wednesday June 15<sup>th</sup> from 6:30pm to 8:30pm and The Market Hall on Saturday July 2<sup>nd</sup> from 2:00pm to 4:00pm.

### CLEOBURY FESTIVAL

After the inevitable Covid absence, it's good to welcome the Cleobury Festival back into our lives. It will be adding to the fun of June 4<sup>th</sup>, spread through the Sports Field and into Lacon Childe School, with a range of local clubs and interests on display. If the Fire and Rescue team are out there, expect lots of youngsters queuing for a seat in the cabin and maybe a chance to sound the siren.

The basic timetable is shown inside on Page 61, the Town Council's reporting page. And the next day, Sunday the 5<sup>th</sup>, there will be street parties in many of the villages around, with the one on Clee Hill the highest.

Enjoy the novelty of a four day Bank Holiday in honour of a quite remarkable lady, Her Majesty the Queen.



### Home Support Services

All staff enhanced DBS checked with over 20yrs experience and training within the local authority/social services mainstream and dementia care sector. Fully insured.

Are you in need of support with the following basic day to day tasks?

Assistance during the day or night	Completing Forms
Companionship	Pet Care
Shopping/Household tasks	Attending social events/ appointments

Contact Liz  
Tel: 01299 271623  
Mob: 07826 929222  
[liz@lifelifeathome.co.uk](mailto:liz@lifelifeathome.co.uk)

Other support services available on request.

**[www.lifelifeathome.co.uk](http://www.lifelifeathome.co.uk)**

Contact Tracey  
Tel: 01299 211660  
Mob: 07957 659909  
[tracey@lifelifeathome.co.uk](mailto:tracey@lifelifeathome.co.uk)



# Victoria Allen Funeral Services

An Independent Family Business offering a  
Personal and Professional Service

Over 25 years' Experience

Competitively Priced

Private Chapel of Rest

Golden Charter Pre-Paid Funeral Plans

Covering All Areas

Home Visits Available

## 01584 879035

24 Hour Service

8 Charlton Rise, Ludlow, Shropshire, SY8 1ND

[www.vallenfuneralsludlow.co.uk](http://www.vallenfuneralsludlow.co.uk)

Email: [vafs@btinternet.com](mailto:vafs@btinternet.com)



# **The Cleobury Clarion, May 2022**

## **Volume Eighteen - Edition Two**



*Bruce Webster, a fine man gone.  
See Page 5.*



*250 years old - The Church Clock  
See Page 15.*



*Something's not quite right.  
See Page 43.*

### **And On Other Pages....**

- |                                 |                                 |
|---------------------------------|---------------------------------|
| 7 - Ludlow Dog Day is Back      | 31 - Stottesdon Church Big News |
| 9 - The Birth Dance             | 37 - Vanda's Big Walk           |
| 11 - The Geography of a Woman   | 39 - Cleobury Mortimer Benefice |
| 13 - Concert For Ukraine        | 41 - Simon Morton on Gardening  |
| 17 - In Praise Of...            | 45 - Mrs Grumpy                 |
| 19 - Cleobury W.I.              | 47 - The Social Calendar        |
| 21 - Stepping Out! Walking News | 51 - Doddington News            |
| 23 - June in the Wyre Forest    | 53 - The Community Hub          |
| 25 - Philip Dunne MP            | 57 - Let's Beat the Scammers    |
| 27 - From The Bandroom          | 61 - The Town Council Report    |
| 29 - The Clarion Vacancies Page | 63 - Local Information          |



**cleobury  
wash house**

**DRY CLEANING & LAUNDRY SERVICE**  
**20 HIGH STREET, CLEOBURY MORTIMER**  
**01299 270571**  
**HOUSEHOLD & COMMERCIAL WORK WELCOME**  
**FULLY ATTENDED, OPEN 7 DAYS**

Self Service ~ Full Service Wash/ Dry/ Fold/ Ironing ~ Large Machine for Big Items  
Service Washing for Duvets/ Blankets/ Sleeping Bags ~ Team Sports Kit Laundry Service  
Equestrian Rug Cleaning ~ Laundry Service for Pet Items  
Professional Shirt Service ~ Nikwax Wash & Proof for Outdoor Clothing

*.... the place to air your dirty laundry!*



RED  HARE

45 HIGH STREET  
CLEOBURY MORTIMER  
WWW.REDHAREALON.CO.UK

01299 270702

PPD FREE - PARABEN FREE - SULPHATE FREE - CRUELTY FREE

"Red Hare now offers a private hairdressing room. Perfect for those wanting more privacy, peace and quiet"

YOUR  
HAIR  
IS  
OUR  
BEST  
ADVERT



## CLEOBURY CHIROPRACTIC

31 High St. Cleobury Mortimer DY14 8DQ

 **James  
Smith**  
OSTEOPATHS

We offer both **CHIROPRACTIC** and **OSTEOPATHY**,  
using gentle methods suitable for all ages.  
Appointments available outside of normal working hours.  
Both practitioners are fully registered, insured & regulated.

**Sue Brown**  
MA MSc DC MMCA  
CHIROPRACTOR

- \* BACK PAIN \* SCIATICA \* POSTURAL PROBLEMS
- \* JOINT PAIN \* HEADACHES (arising from the neck)
- \* Some SPORTS INJURIES

- PLUS** \* COMPUTER (DSE) WORKSTATION ASSESSMENTS  
\* BACK CLASS - Weekly exercise class for those with  
back/neck pain.

**Hands for Heroes**  
Free Chiropractic Care for War Veterans



**GCC registered**  
General Chiropractic Council  
[www.gcc-uk.org](http://www.gcc-uk.org)



01299 519351 / 07932 000028 / 07506 287191

[www.notiustaboutbackpain.com](http://www.notiustaboutbackpain.com)

[www.isosteopaths.co.uk](http://www.isosteopaths.co.uk)

**iO**  
THE INSTITUTE  
of OSTEOPATHY





## BRUCE WEBSTER

After a long fight with pancreatic cancer, Bruce died on May 2nd. That dreadful disease had taken such a toll of his physical appearance that the cheerful, neighbourly man who loved a chat was no longer there.

Jackie in Australia remembers him as the child who was invited to a party and asked lots of others to join him, so the family had to bring a garden bench in to get all the kids seated. As a young man, he went missing from a friend's party, but was found sitting on a chair at a road junction directing the traffic.

Ron Elliston was off to Scotland on holiday and Bruce asked him to bring him back some Scottish Fairies. Ron got together a pile of paper bags from local grocer Fareys that were cut into label sizes and mixed with tartan paper pieces to make a jar full. Bruce loved that.

He was an avid West Ham supporter, as Roger Castleton's photo shows and after working for two British airlines, he moved to the AA at Worthing

to take on a big travel advice job. Lovely touch - senior man at the AA and he didn't drive!



When he retired, he did a part time shelf stacking job. After one big snow storm, he struggled through to be told off by a supervisor for being late. Bruce told her just what to do with her goods waiting to be stacked and walked out. From there he moved into Cleobury, finding a small town with friendly people and an apartment with affordable rent. He was concerned to find there were only Conservative candidates declared early for the County election and sought out the other candidates and

offered to help them. Not that he was anti-Conservative, he just wanted to see the vote as a fight, not a walkover. None of the candidates took up his offer. A lovely, gentle man.

Rest in peace, old friend.

*Jim Reynolds*

## THE WINE WALK IS BACK

It's scheduled for Friday the 17th this month and it's a great social occasion - it's the Wine Walk. Raising funds for the work of the Friends of St Mary's Church, it offers hospitality at four houses around the town, with a glass of wine or juice plus nibbles at each point. Tickets this year cost £14 each, available from Diane Waddington on CM 272820 or any committee member of the Friends, if you know one.

It's a lovely, friendly way to spend a summer evening and with the whole tour done on foot, no problem with choosing who will be the driver to get you home legally. May all known Clarion readers raise a welcoming glass as they pass on their happy journey around Cleobury.



**The Oak Boy**  
TRADITIONAL OAK FRAMING  
SINCE 2011  
07398 233443

SERVICES AVAILABLE

- Flooring
- Manufacturing & fitting doors & windows
- Kitchens
- Cladding
- Studwork
- Bespoke Oak Framing
- Landscaping
- Patios
- Brick & Stone work
- Roofing, Tiling, Guttering
- General Building
- Property Maintenance

John Caswell  
Johnjocaswell@yahoo.com

Call now for a Free Quotation!



**CM BESPOKE CARE**

**Q** Care Quality  
Commission  
Registered

**S P C**  
Shropshire Partners In Care

Personal, Nursing and Domestic care.  
Tailored to your needs.

**Call for a free consultation**

**Tel: 01746 718816**

**Mobile: 07943834132**

www.cmbcare.co.uk  
www.facebook.com/cmbcare  
email: cmbbespokecare@btconnect.com



**REVIVE BATHROOMS**  
COMPLETE BATHROOM INSTALLATION SERVICE

**07971 361901 or 01299 832484**

**Complete Bathroom Installations  
Bathroom Refurbishment or Repairs  
Wet Rooms  
Professional Wall and Floor Tiling**



For a quality and guaranteed service, call Stuart for a free quote  
Highly Recommended / References available - *see my reviews on* [www.freeindex.co.uk](http://www.freeindex.co.uk)

**FOR THE BATHROOM YOU DESERVE!**

***Flowers By Fiona* est 1991**

**Fresh Flowers made to order  
Special Occasions  
Weddings, Anniversaries, Birthdays  
Sympathy Tributes**

**19a High Street,  
Cleobury Mortimer**

**Tel: 01299 272 995**



**Phoenix Environmental Ltd.**  
Contaminated Land Consulting and Contracting

Bringing 17 years of experience to bear, we provide straightforward advice help guide you through planning, or deal with your contaminated land, geotechnical and geo-environmental issues.

Phoenix Environmental offer both site and office-based services including:

- Regulatory Liaison and Planning Approval
- Phase 1 Desk Studies (Geology, Hydrogeology, Hydrology, History)
- Intrusive Investigation (Phase 2) Design and Application
- Trial Pitting, Cable Percussive Boreholes, Dynamic (Window) Sampling
- Flood Risk Advice
- Geotechnical Investigation/Advice, Foundation Advice
- Risk Assessment (GQRA/DQRA)
- Remediation Strategies/ Verification Reporting
- Environmental Audits/Site Audits
- Site Based engineering and supervision
- Drone Surveys/Media Production

We'll be there to guide you through every stage.  
[www.phoenixenviro.co.uk](http://www.phoenixenviro.co.uk)

Contact us: email. [enquiries@phoenixenviro.co.uk](mailto:enquiries@phoenixenviro.co.uk) Tel. 07800 646691



## **CLOWS TOP GARDEN CLUB**

On June 28th we are travelling into Herefordshire again. Ivy Croft and Auldenfarm Gardens are near to Leominster. We will meet at 9.30 by Clows Top Victory Hall to share cars. Auldenfarm has a large collection of Siberian Iris and both gardens are described on the internet. To book for this trip, or for more information, please contact Elva on 01299 832288.

June 22nd is the date of the indoor meeting in Clows Top Victory Hall. (Hopefully sporting a smart new roof!) The speaker at 8.00pm will be Nick Poultney, talking about "Raised Beds and No Dig Gardening," a subject which will surely interest us all. It is also the date for the Rose and Sweet Pea Show. There are six classes, for members only. Please come early to place your entries.

New members are always welcome. Just turn up at 7.30 on the 4th Wednesday of the month, apart from July and August when we will meet at 6.30 instead for a garden visit.

*Judith Lawson*

## **THE CREATIVE WRITING GROUP**

'Crime' was the subject for May's offerings and with tea and cake from Marian and biscuits from Julia it was almost a party. Julia's story told of scam heating inspectors who went back to the depot for more parts and didn't appear again. Like the clock. A typical scam crime.

Marian offered the poisoning of peregrine falcons on Cleve Hill and the volunteers fighting to give the orphaned chicks a life.

The editor traced the growth of global crime as it moved from local to national standing, asking what might be done to find why it happens and how to stop it. Now there's a challenge.

This month's subject is 'craft' and writers can translate that word as they wish. We'll discover how in the library on June 13th at 6.30. Making this a social occasion, as Marian has done, broadens the appeal and is well worth trying, because we have some experienced writers who will happily encourage anyone wanting to put down a few words. More details from the editor on 01299 270642. There is no charge.

## **LUDLOW DOG DAY**

There have been a lot of gaps in the social calendar in recent times, one of the most notable the Ludlow Dog Day. And on July 24th that very popular show returns to Stokesay Court with a full day of doggie fun and entertainment.

There will be 20 classes to enter your dog in, from waggy tails to sausage eaters. For the more competitive pets, Have-A-Go events range from racing to scurries and agility, while to show us all how good proper training can be, Bob Hogg will parade and demonstrate his selection of sheepdogs and ducks! Any man prepared to do that in public must have a special talent and if you've seen him in action you'll know that is true of the man and his troupe.

Of course there will be food and drink to keep you going, plus lots of doggie stalls. It's all organised by the Ludlow Rotary Club, raising funds to support local good causes. If you want to know more, [www.ludlowdogday.org.uk](http://www.ludlowdogday.org.uk) is their website address.

This is a good day for dog lovers, a truly family day out that helps others in the local area.

# **TDC CARPENTRY SERVICES**

Fully insured qualified professional  
Excellent workmanship and quality customer care  
From hanging doors, fitting kitchens to bespoke projects

## **Tim Clare - 07890 519980**

**Professional. Affordable. Local.**



### **Electrical Installations**

No matter the size, we can gladly undertake all Domestic, Commercial and Industrial installations you require.

A family run business, with over 25 years industry experience.

From period properties to agricultural solutions, we provide a professional service every time. We also do call outs and emergency work.

### **Renewable Energy**

Protect yourself from rising energy bills by considering renewable energy.

Solar PV is the most accessible way you can save energy by producing electricity from the sun. Earn a tax free income from the electricity your system produces.

Speak to us about how renewable energy can benefit you or your business.

**Whatever your query, give us a call.**

**T: 07971 096267 / 08450 564173**

**W: [www.awe-services.co.uk](http://www.awe-services.co.uk)**

**Two Staks, Eagle Lane, Cleobury Mortimer, Worcs. DY14 8RA**





## **THE BIRTH DANCE**

This sacred dance is known to be the oldest childbirth preparation in the world, originating in pre-biblical times.

Practised until the 1930s, it is now more commonly known as 'the belly dance' which is seen as nothing more than a series of titillating sexual gyrations instead of a beautiful ancient art form and a natural form of exercise that has aided women in pregnancy and childbirth for thousands of years. It is also a profound and powerful means through which women celebrated their sexual energy, fertility and motherhood.

The movements of this ancient dance concentrate on the pelvic region and abdominal muscles and help to facilitate the birth by reducing pain during contractions of the womb.

The movements are based on the natural structure of the body and help to move the body as it is designed to move, irrespective of age, size, health or fitness levels.

Sessions are held for pregnant women, those training to become midwives or those of you who have health issues relating to women's problems. Or just want gentle exercise.

Classes are held at Cleobury Market Hall, from 7.00 to 8.00 on Thursday evenings. Contact Tina Hobin on CM 272882 or just call in. Midwife Becci Goodwin is also present every week.

## **CLEOBURY'S 10 KILOMETRE RACE**

Cleobury Mortimer Running Club welcomes the return of their 10km race on Sunday July 3rd

After a two year break, the Club is pleased to announce the return of their race on Sunday July 3rd, starting at 10am.

It will follow the same route as previous years, starting at the Sports and Social Club. For the safety of all locals and runners, we have agreed a

temporary road closure between approximately 9.50am and 11.40am on the day of the race. The roads that will be affected are: Love Lane; Childe Road; part of the High Street; Catherton Road; Neen Savage Ford; Barbrook Road; Ron Hill Lane; Ronhill Crescent, The Hurst and Langland Road. Please factor this into your journey if you plan to travel at this time. To try and minimise disruption, we will be operating a rolling road closure to ensure that the roads can be re-opened to traffic as quickly as possible. Your understanding and support of this local event is really appreciated.

We invite anybody who wishes to come along to watch and enjoy the event on the sports field, and there will be a bar open as well as food and refreshment vans available for the use of everybody.

## **FLICKS IN THE STICKS**

"Flicks in the Sticks" will be showing early this month, June 4th at 7.30pm, to celebrate the Jubilee weekend. We will be showing *Official Secrets*, the incredible true story of the spy who defied her government to stop a war. In 2003, British intelligence specialist Katharine Gun received a memo with a shocking directive: collect blackmail worthy information on UN council members to force the vote for the invasion of Iraq. Unable to stand by and watch the world rush into war, Gun makes the decision to leak the memo to the press, igniting an international firestorm that would expose a vast political conspiracy and put Gun in harm's way. It stars Keira Knightley, Ralph Fiennes, Matt Smith and Matthew Goode.

To make the evening special, we will be taking orders for interval food when you buy your tickets: fish and chips (£6.50) or a hotdog (£2).

Drinks will be available from the bar.



**The Well Being**

**Holistic Therapies**

Cleobury Mortimer DY14 8AS

[www.thewellbeing.co.uk](http://www.thewellbeing.co.uk)

April Boardman

Reiki Master ITEC MFHT Dip Hyp

**Do you have aches & pains, ongoing health issues or just need to relax? Help is at hand!**

**Deep Tissue & Remedial Massage**

**Reiki & Crystal Healing**


**Hot Stone Massage-Aromatherapy- Reflexology**

**Pregnancy Massage & Hypnotherapy**

**20% off your 1st treatment!**

**Tel 01299 513148 or 07881494036 or Book Online!**

## People when thinking of having Home Care often ask who are your staff? What sort of company are they?

TLC are a family run care provider supporting people with Disabilities, Dementia, Aging Population and Acquired Brain Injury to remain living at home for as long as it is safe to do so. Clients when considering home care will often find it difficult to accept and wonder about who are the staff and what qualifications they have? I cannot speak for other companies, however in our company it is made up from many sectors of our society and when these are put together, we have an Outstanding Team. 

**One of those sectors are the future NHS professional**, we have Daisy who is in her last year of her training to be a midwife, Lucy who is working towards the end of her training to be a Physiotherapist. Christina and Aila about to start their journey into nursing. We have further staff who have just been accepted into the NHS. These lovely kind young adults not only study many hours both in university, on hospital wards, they also give to us and have helped us support our clients for many years! Most joined us while still at college.

TLC have ex-nurses that come to us after raising their family and some, in recent times have re-joined their colleagues in the NHS.

We have staff who have raised their kids and now want a career, TLC will train or retrain people to help people reach their full potential and become one of our Outstanding Team.

We encourage kind caring and honest people of all ages and backgrounds who want to make a difference to people's lives to join our team. TLC invest heavily in people with ongoing support and training to help our new colleagues achieve their goals and reach their full potential. Once initial training is complete and they have been assessed as competent, TLC Induction Manager and our Training Manager will support staff through to achieve their Level 2/3 in H&S Care

### Our Training

TLC's Training Team offers full free training on site and support staff through their Care Certificate. We have strong connection with an outside Training Provision who help our staff to achieve their Level 2/3 in H&S Care. Currently we have 32 members of staff that have already achieved Level 2/3 in Health and Social Care. We have qualifications at level 4 and five of our Senior Managers have Level 5. All staff that are new to care are required to achieve Level 2 within the first two years of their employment.

### Contact us

For further enquiries please regarding Care or employment please ring TLC Care at Home 01299 272897 for an informal chat. Visit [www.tlccareathome.com](http://www.tlccareathome.com) or [wecare@tlc-careathome.co.uk](mailto:wecare@tlc-careathome.co.uk)

*Unlock your Potential.  
Success starts here!*

### COVID-19 Update

All our staff are provided with full PPE's including Gloves, Full Aprons, Sleeves, Visors, Gloves Surgical Masks.

Video training on Donning and Doffing PPE's sent out regularly.

Staff sign health declarations daily, Staff have weekly Covid-19 test. Most of our staff have now been vaccinated against Covid-19. TLC work closely with government regulation and update our risks assessment accordingly.

## **The Geography of a Woman as she ages:**

Between 18 and 22, a woman is like Africa .  
Half discovered, half wild, fertile and naturally beautiful!

Between 23 and 30, a woman is like Europe.  
Well developed and open to trade, especially for someone of real value.

Between 31 and 35, a woman is like Spain.  
Very hot, relaxed and convinced of her own beauty.

Between 36 and 40, a woman is like Greece.  
Gently aging but still a warm and desirable place to visit.

Between 41 and 50, a woman is like Great Britain. With a glorious and all conquering past.

Between 51 and 60, a woman is like Israel.  
Has been through war, doesn't make the same mistakes twice, and takes care of business .

Between 61 and 70, a woman is like Canada.  
Self-preserving, but open to meeting new people.

After 70, she becomes Tibet. Wildly beautiful, with a mysterious past and the wisdom of the ages. An adventurous spirit and a thirst for spiritual knowledge.

## **The Geography of a Man**

Between 1 and 100, a man is like North Korea and Russia. Ruled by a pair of nuts!

*Suzanne France*

## **THE BREAKFAST CLUB**

Another good turn-out of members in May to hear Jock Brown make the case for the benefits of electric cars. He convincingly showed that many of the widely circulated statements about electric cars are at best misleading, and at worst, demonstrably false.

Worse for the environment? The batteries do use rare minerals (e.g. cobalt), but can last up to a million miles, and are recyclable. Brake wear is

much reduced as regenerative braking is used to recharge the batteries.

Is their range rubbish? Not nearly as serious as has been claimed. New models can cover up to 300 miles, and very few car journeys are that long. For owners who can park off-road at home, recharging can be easily carried out overnight. The idea that hydrogen would be a better fuel for private cars does not bear examination. It's very expensive to produce (almost invariably by electrolysis) and once produced, is dangerously explosive. Why, after all, are airships no longer filled with hydrogen?

Too expensive? They do cost more than equivalent petrol or diesel alternative, but costs will fall as the numbers being made grow. They are also holding their value very well at present, with some secondhand models having a market value higher than their original cost.

There is some evidence that many studies purporting to demonstrate the unsuitability of electric cars have been backed by, the major oil companies. This explains the bad press electric cars have had. The future is electric!

Our next meeting is on June 14th, when the speaker will be Reverend Joe Simons, our curate. Those wishing to attend should contact Angela Drennan (270636) to book places.

*Mark Baldwin*

## **SILLY BIT**

**A famous comedian visits an old folks' home to tell them a few jokes. He chats away to them, tells some very good jokes and then his ego gets the better of him. He asks one old lady, "You don't know who I am, do you?"**

**She says, "Don't worry, dear. Matron will tell you."**

**Suzanne France**

*Charlton Interiors*

UPHOLSTERY & INTERIORS

**Rosemary Jones**

Mob: 07837 609229

Phone: 01584 861823

Email: [info@charltoninteriors.com](mailto:info@charltoninteriors.com)

[www.charltoninteriors.com](http://www.charltoninteriors.com)



**BESPOKE YOGA TUITION**



Relax Breathe Stretch Tone

One to one Yoga lessons

BWY trained teacher with over 15 years experience

Can travel to your home

Angela Kazimierczuk

**07870 506655**

# CLEOBURY MORTIMER PARISH HALL

The largest hall in the area

We are open again so would you like to celebrate an event, party, wedding, or just a get together?

We are able to cater for small or large parties, sit down dinner parties for up to 100 people with or without a bar.

Come and have a look at what we can offer.

To book, call Janet on 01299 271010

## 'FLICKS IN THE STICKS'

7.30 Saturday June 4th

to celebrate the Jubilee weekend

## "OFFICIAL SECRETS"

*The incredible true story of the spy who defied her government to stop a war*

Orders will be taken for fish and chips or hot dogs during the interval

Licensed Bar. Admission £4.00

THE TOWN'S BEST VALUE

Do you know a 2, 3 or 4 year old who would like to join our fantastic nursery?



**Stottesdon Gateway NURSERY**

**We really care and make learning fun**

**We can offer:**

- A safe and nurturing learning environment with dedicated and caring staff.
- High quality provision with strong links to Reception.
- An amazing outdoor area and use of the school facilities and space.

**Nursery places for 2, 3, 4 year olds, available from September 2021**

- From 15 - 30 funded hours available.
- BEFORE & AFTER SCHOOL & HOLIDAY PROVISION** for children aged 2 - 11 years old.

**Ofsted Outstanding Provider**

TO BOOK A TOUR :

Stottesdon C of E Primary School

Stottesdon

Shropshire

DY14 8UE

**TEL: 01746 718617**

Nursery and Wrap-around sessions (term-time)		Fees
Early Start	7:30am - 8:00am	£4.00
Breakfast Club	8:00am - 8:45/9:00am	£4.00
Morning Session	9:00am - 11:30am	£10.00
Lunch club	11:30am - 12:30pm	£4.00
Afternoon Session	12:30pm - 3:00pm	£10.00
After School Club	3:00pm - 5:30pm	£10.00



## **WORKING ON THE ROYAL FESTIVAL**

Delivering the May Clarion to the Hopton Wafers Phone Box Library - they deserve an award for the Most Novel Business Title - I did an exchange for the village Jubilee Newsletter. A colourful piece of work, detailing what had been achieved in April and what was coming later.

June 5th will be the highlight, as you would expect, with a Community Street Party in the heart of the village, or in the splendid Village Hall if it rains. 1.00 o'clock start, preferred dress red, white and blue and bring your own picnic. Road closure applied for and the event is free. And over the weekend there will be a royal themed 'Pot or Plot' competition; that's free, too.

## **CELEBRATION CREAM TEA**

Melville Methodist Church at Oreton will be celebrating Her Majesty's Platinum Jubilee with a cream tea on Saturday, June 25th, from 3.00 until 5.00.

There will be an Adult and Children's competition, the older children and adults to write a poem about our

queen. For Under Sevens and pre-school children, it will be a matter of creating a picture of Her Majesty. All entries to be submitted to Melville between 4.00 and 6.00 on Wednesday the 22nd. There will be prizes in each category.

More details from organiser Ruth Downes on [mdownes678@gmail.com](mailto:mdownes678@gmail.com)

## **COME AND MEET THE YOUTH PARTNERS**

Cleobury Youth Partnership will be very visible on June 4th at the bottom of the Sports and Social Playing Field next to the Primary School fence where there will be a warm welcome to you from all our Youth Groups.

Lots of different activities and information for all our young to enjoy.

A chance to join the different groups, and opportunities to help run these groups working in the Cleobury Mortimer Area.

*Madge Shingleton, Acting Chair*

## **CONCERT FOR UKRAINE**

There will be a Platinum Jubilee Concert in honour of Her Majesty's Platinum Jubilee at Kidderminster Town

Hall on Saturday June 18th at 7.00 o'clock. There will be host of local choirs, with backing from Holborne Brass and organist Charles Matthews in support.

Tickets are £10 each, with Under 19s getting in free and all proceeds going to the Ukraine Refugee Relief fund. Book yours at [www.kidderminsterchoralsociety.co.uk](http://www.kidderminsterchoralsociety.co.uk)

## **GARDEN OPEN**

What good news this is, another traditional garden open to the public to help raise funds for a local cause on Sunday June 12th. This one is Dorothy Hughes's regular event at Coppice Gate Farm, Lye Head, near Bewdley. If you're using a satnav, the postcode is DY12 2UY. All monies raised will be donated to the Friends of Rock Church.

Tea, coffee and cake will be available and there will be a raffle plus a plant and other stalls to tempt a little spending on a treat for yourself or someone special.

The gates open to the public at 11.00 and close at 4.00. For an affordable £5.00 to enter and enjoy the garden and all other attractions, it's good old fashioned country value.

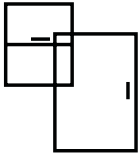


**Kim Stanley**  
30, High Street  
Cleobury Mortimer  
Shropshire  
DY14 8DQ

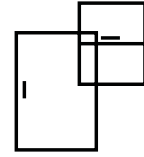
**Tel. 01299 271800**  
[www.kimstanley.co.uk](http://www.kimstanley.co.uk)







# Ashley Bannister Windows & Doors



- UPVC Windows & Doors
  - Composite Doors
- Porches & Conservatories
- Glass Unit Replacement
- Fascia, Soffit & Guttering
- Handles & Letterboxes
- Hinges & Window Restrictors



**No Job Too Big or Small**  
Certass Approved Installer  
*Local Tradesman Based in Highley*

ashban94@hotmail.com  
Ash: 07817 785245



## Twit - Twoo Falconry

- **Static and flying displays with owls & falcons**
- **Fetes and fayres**
- **3 hour bird experiences based in clows top**
- **Garden parties and birthdays**
- **1-2 hour talks for indoor hall and outdoor visits**



**For quotes and bookings ring Steve Woodison 07738014884 or  
Email [scw1960@hotmail.co.uk](mailto:scw1960@hotmail.co.uk)**

## MIKE AND SHELLEY ROBERTS

**Haulage Contractors**

**Supplier of Aggregate and Asphalt products**

**12 Lacon Close, Cleobury Mortimer DY14 8EF**

**07860 669350**

**07966 045012**

### ST MARY'S CHURCH TOWER PROJECT



*At 250 years of age, the Birmingham made tower clock is due for a proper overhaul. It was built by the renowned George Donisthorpe in 1772.*

Most people in Cleobury will have noticed that the church clock has stopped. It stopped on Sunday 17 October, the day before the death of Alec Osbaldiston, and in spite of all our efforts we have been unable to persuade it to go again. The clock has been inspected by the Diocesan Clock Advisor, and by the Cumbria Clock Company, and their advice is that a full workshop-based restoration is necessary. The clock is a historic instrument, having been built by the Birmingham-based builder George Donisthorpe in 1772, and is a rare example of his work. This year is its 250<sup>th</sup> anniversary, and we are therefore keen to see it restored to working order as a fitting memorial to Alec, who looked after the clock for very many years and masterminded its last restoration.

The need to restore the clock has spurred us to tackle two other projects in the tower, the replacement of the ladder by the which the ringers access the ringing room, by a safer spiral staircase, and the re-painting of the cast-iron and steel bell frame. The ladder rises nineteen feet in one continuous ascent, and faces a blank wall at the top so that it's necessary to climb off and on the ladder sideways. These days it would not pass health and safety regulations on several counts, and it is high time that it was replaced by something safer.

The bell frame was installed as part of the major restoration of the bells in 1925. It is a massive

installation, measuring some 15 feet square by eight feet high, and is constructed of cast-iron frame sides resting on steel girders. These girders are so large that they were deemed strong enough to take the additional weight of the structural steelwork which was installed in 1993 to support the spire. It is therefore essential that the whole installation is kept in good order to preserve the future of the bells and of the spire. Re-painting is not a trivial exercise, and certainly outside the scope of a DIY job, as the frame surface has to be thoroughly prepared, and any rust and flaking paint removed. Old paint may well contain lead, so it is definitely a job for professionals.

How much will all this cost? The clock restoration will be about £10,000, and the bell-frame painting another £10,000. There is more design work to be done on the staircase yet, so the cost of this element is not yet known exactly. We are expecting the total cost of the project, including incidentals and an allowance for contingency, to be about £40,000. We will have to pay VAT as well, but luckily we will be able to reclaim this through the Listed Places of Worship grant scheme.

We have received a generous donation from the Friends of St Mary's towards the work, and this has enabled us to place the order for the restoration of the clock with Cumbria Clock Company. As part of the restoration, the clock will also be converted to electric winding, which will save the effort and commitment of having to wind it three times a week. We hope that the clock work will be carried out in the autumn. The Cumbria Clock Company is the leading tower clock engineering firm in the UK, and are just finishing the restoration of the clock in the Elizabeth Tower at the Houses of Parliament, the clock which strikes on Big Ben. We also hope to be in a position to place an order for the frame painting shortly. We are working with our architect on the final design of the staircase. It is hoped that we will complete the whole project before the end of the year.

We will be applying for grants, and carrying out fund-raising, to enable us to pay for the work. Further updates will be issued as we go along.

Chris Kippin, PCC Secretary, St Mary's Church  
[thekippins@btinternet.com](mailto:thekippins@btinternet.com)





## Find Your Smile at Cleobury Dental Practice

Whether you're looking for dental implants to replace missing teeth, invisible braces for a straighter smile, boosting your confidence with teeth whitening or a dedicated dentist for your regular care, you can find it all here in the heart of historic Cleobury Mortimer.

- Modern, state of the art facilities and the latest dental technology
- Free car parking adjacent to the practice and step-free access to our dentists' surgeries
- Enjoy private dental care from just 47p per day with our membership plans
- Highly experienced in helping those with dental phobias

### Services Provided

- Tooth-Coloured (White) Fillings
- Sedation for Anxious Patients
- Teeth Straightening with Braces and Invisalign
- Dental Implants (Replacement of Missing Teeth)
- Emergency Appointments Slots Available (first come first served)
- Hygienist Services
- Private and NHS Care (NHS subject to capacity)

### Opening Hours

Mon, Tue, Wed and Fri **9am-5pm**

Thu **9am-7pm**

Saturdays **by appointment only**

**Tel: 01299 271 747**

**[www.cleoburydental.co.uk](http://www.cleoburydental.co.uk)**

BDA Good Practice  
Member

 **invisalign**  
PROVIDER



## IN PRAISE OF...



Following my recent new build development at Button Bridge, I would like to express my sincere thanks and appreciation to the local tradesman I have used during my project.

Three years ago I approached Stewart Mumford for guidance on submitting a planning application to have a bungalow built on family land in Button Bridge. With Stewart's knowledge and experience of Shropshire planning regulations he was able to guide me through a process I don't think I could have done on my own. I was granted planning permission, for my new home, with design and plans produced by Stewart. For this I am extremely grateful.

In October 2021, my building was commenced by A G

Builders, Bridgnorth. From the start I knew I wasn't going to be disappointed. Within weeks my building was complete. In my opinion, I had the best builders. Alan and Reece were the nicest approachable people, giving me reassurance throughout the build. Everything done to a high standard. Andy Wakeman from Cleobury Mortimer, installed all the electrics, with assistance from Lee Jordan and again a professional, friendly service. I chose to have an Air Source Heat Pump, so approached Daniel Morgan of Vortex Plumbing for advice and information on this and after deciding to go with this source of energy, Daniel Morgan and Tim installed all my plumbing works. Once again Daniel was very supportive and went that extra mile with helping me decide re bathroom furniture. Finally I have my brother Martin Preece to thank, who has done an absolutely fabulous job of the interior work, with everything finished to a high standard. Oh and my nephew Neil Preece, who has worked hard in order to complete the interior painting, just in time before carpets fitted.

I can't believe my bungalow is now complete. I feel I have been blessed with the best workforce and would highly recommend their service.

*Miriam Williams*

## SAINT ELIZABETH'S CAR BOOT SALE

Thank you to everyone who supported our first event since the pandemic lockdown. It was a beautiful day and after a difficult start turned into a very enjoyable event. A van had parked across the gateway to the lower church car park which stopped the event developing, as the car park was for customers attending the event. Eventually, the van was removed and the church will put up a sign to deter this happening again. Unfortunately, the event coincided with the rearranged Rock Car Boot Sale, so did not attract as many Booters as we had hoped for, but those who came seemed to enjoy the occasion. We plan to have more, and when dates are decided upon we will advertise them in the Clarion. The money raised - £66.85 - will be donated to Hope House children's hospice.

*Angela Flowers.*

# Firewood

**Seasoned logs, barn dried & ready to burn.**

**Free local delivery -01584 890993 or 07970878224**

**Various size loads available**



**Paul Harding Tree Services**



# John Brazier & Co

Accountants & Business Advisors

Accounts – Company, Partnership and Sole Trader  
Tax Returns – Corporation Tax and Personal  
VAT - Returns and advice  
Payroll Service including RTI

For a personal and  
professional service

Contact John Brazier or Sarah Morgan to discuss your requirements on 01299 271473 or email at [info@johnbrazierco.co.uk](mailto:info@johnbrazierco.co.uk). Alternatively, you can arrange a meeting at 53, High Street, Cleobury Mortimer, Worcestershire DY14 8DQ

01299 271 473



## Bumperscuff Rescue

• Body Shop excellence • Home convenience

**Cost effective car body repairs!**

• Bumper scuffs • Paint scratches  
• Kerbed alloy wheels • Small dents

Free no obligation quotes, all work fully guaranteed Call **Andy Taylor** now on  
**07834 322216** or visit [www.bumperscuffrescue.co.uk](http://www.bumperscuffrescue.co.uk)

### CLEOBURY MORTIMER CARPETS

#### Supplying and Fitting of:-

- Carpets
  - Natural floorings (Cair, Sisal & Seagrass)
  - Vinyls
- Carpets supplied by: Victoria Carpets, Fibre Flooring  
& Alternative Flooring at Unbeatable Prices

#### Contact Details:-

Address: 26 High Street  
Cleobury Mortimer •DY14 8BY  
Telephone: H: 01299 270095  
M: 07739 186163  
Email: [garethleach@aol.com](mailto:garethleach@aol.com)  
or check out our new website  
[www.cleoburymortimercarpets.co.uk](http://www.cleoburymortimercarpets.co.uk)

## INFINITE ELECTRICAL SOLUTIONS

For all your electrical needs:

House rewires

Fuse board upgrades

Electric showers

Need an extra socket or light installed?

No job too small

For a FREE quote

Call Lloyd 01584 811184



## THE READING GROUP

We were transported to 17<sup>th</sup> century Amsterdam this month via Jessie Burton's novel 'The Miniaturist'. What a fascinating, atmospheric city she gave us. The story centred around a miniature house and followed a group of disparate characters, headed by Johannes and his new wife Nella. With plenty of twists and turns in the plot it keeps you in suspense. Beautifully written, the author has done her research, home life and trading practices are engrossing. Several group members had previously read the book and a couple read it again. There were some negative comments, mainly regarding the second part of the novel, also the finish. Overall; enjoyable, intriguing and a worthwhile read. Only a small group met this month with much hilarity discussing our current read.

For June our book is 'The Return of Captain John Emmett' by Elizabeth Speller, which looks promising. Discussion follows on June 20<sup>th</sup>.  
*Deana Kimber 271754*

## CLEOBURY W.I.

Our May meeting began with the presentation of a cheque for Cleobury Old Comrades to

Mike Hermolle, Chair of the local branch of the Royal British Legion. This was our charity in their centenary year, funds being raised at our Winter Warmer lunches. We welcomed Alison Wall as our speaker, who gave an introduction to Tai Chi and taught us some 'stand-alone' exercises. Everyone enjoyed joining in, and it was easy to appreciate the benefits of this type of exercise for our minds and bodies.

Our centenary was recognised by the Shropshire Federation of WI, with the presentation of a 100<sup>th</sup> birthday certificate at the recent County AGM. Members have begun preparing the commemorative garden for planting; it will open in September with a tree-planting and afternoon tea. Sewing sessions are underway for the commemorative tablecloth and all members are invited to contribute. No special skills are needed!

This month we will be holding a tea and cake afternoon on June 1st at 2.30pm at the Larch Barn. We will be at the Cleobury Festival on June 4th, anyone can visit our stand to find out more about WI. It's never too late to join; we have 10 new members already this year!

Upcoming events are a morning visit to Trees for Life, Tenbury on June 24<sup>th</sup> (members only) and a whole day trip to the Black Country Living Museum on July 21st.

The meeting on 14<sup>th</sup> June will see the return of Liz Smurthwaite (a past member and ex-Treasurer) who will demonstrate the art of pencil drawing. For further information or to join WI, you are welcome to contact Clare 01299 271905, Judy 01299 270983 or email [judysant10@gmail.com](mailto:judysant10@gmail.com)

*Val Sniadowski*

## THE TREFOIL GUILD

We are a group involved in Guiding in the past, who have formed a Trefoil Guild – Guiding for Adults. We meet once a month, with an online catch up in between. No regular commitment.

Open to all ages, so if you have been involved in Guiding and would like to renew a link, or have children who were involved and had a great time, we would welcome you to join. We set our own programme, so we can cater for all choices, but the main thing is we have fun!

If you are interested, please contact me, Helen Smith

[helen.smith189@gmail.com](mailto:helen.smith189@gmail.com)



### Grainger Jones your local financial adviser

Grainger lives in Cleobury Mortimer giving the residents and surrounding areas a dependable financial planning service.

- **Wealth Management**
- **Retirement Planning**
- **Investments & Savings**
- **Family & Business Protection**

An initial consultation is available at no charge

To book an appointment or just have a chat, please contact Grainger below.

tel: 07974 100089

email: [grainger@meridenfp.co.uk](mailto:grainger@meridenfp.co.uk)

website: [www.meridenfp.co.uk](http://www.meridenfp.co.uk)

As part of the CLEOBURY FESTIVAL to  
celebrate the Queen's Platinum Jubilee



## **CLEOBURY MORTIMER FOOTPATH ASSOCIATION**



invites you to join them on the

# **DINMORE DALLY WALK**

The walk takes us to the small hamlet of Neen Savage with  
wonderful views over the Clee Hills.  
It will last about 2½ hours at a sociable pace.

**SUNDAY 5TH JUNE  
10.00am**

**Meet outside St. Mary the Virgin Church, Cleobury Mortimer  
Accompanied children & small dogs on leads welcome**

There is no charge for this walk  
Please wear suitable footwear & clothing  
The leader may refuse to take people unsuitably dressed

*There is a walk on the 1st Sunday of every month  
For more information about CMFA visit:  
[www.cmfa.co.uk](http://www.cmfa.co.uk)*



## Stepping Out! Who's Walking, When and Where.

### ROCK PATHFINDERS

The Pathfinders' walks for the coming month:

Thursday, June 2nd. 10.00 am start from Castlefields car park at Ellesmere in the far north of Shropshire SY12 0PA. Bring a packed lunch!

Thursday June 16th. 10.00 am start from Harvington Hall, Harrington, Kidderminster DY10 4LR

More details on [www.rockpathfinders.uk](http://www.rockpathfinders.uk) or from Alan on 01299 400304.

### THE FOOTPATH ASSOCIATION

Don't forget to join us on Sunday June 5<sup>th</sup> for our Jubilee Celebration Walk. Full details are in the CMFA advertisement on a page near this article.

After a group of CMFA members enjoyed an excellent annual walking holiday in Dorset at the end of April the route for the May Social Walk was much nearer home. Starting as usual outside St Mary's church and following a 6.5 mile route around the Mawley estate to Prizeley and Bayton returning via Reaside. A garden barbecue and celebration of a recent significant birthday rounded off the day.

On May 1<sup>st</sup> the Parish Walk followed the CMFA Walk 23 'Three Coppices'. Eleven people enjoyed the five mile circuit. The deer were hiding but birds were in good voice and bluebells gave an abundant display. These walks take place locally on the first Sunday of the month and are open to everyone.

We were all looking forward to the first Walking For Health trip away. A gentle walk around Cleobury golf course was planned followed by coffee in the clubhouse. Ten people braved the heavy rain. A unanimous decision to have coffee first was rewarded with a break in the weather long enough for the group to complete a rather damp walk. This month the away day takes us to Upper Arley with refreshments at the Arboretum Cafe. The walk will be under two miles with a short return walk directly to the cafe available. Anyone interested in joining us please meet at Love Lane car park on Wednesday June 8th at 9.50am.

In May the footpath working party were at Reaside Pool near Reaside Manor south of Tenbury Road. The work wasn't onerous with the

installation of a dog gate and renovating steps along with some clearance work on the agenda. The recent wet weather and warm sun has encouraged the plant growth. Remember to take a pair of secateurs when out walking and help keep our local paths clear.

Two years into the pandemic and I recently tested positive for Covid. Being fully vaccinated I think I got off lightly. The symptoms were like a heavy cold, although I was surprised by the incredible lack of energy. The advice I received to take it easy meant that I spent more time planning walks than completing them. I can't decide whether my recent forgetfulness is due to the virus or my age. For now I continue to reach the top of the stairs only to forget why I had gone there.....!

CMFA activities are on our website [www.cmfa.co.uk](http://www.cmfa.co.uk) and also on Facebook.

*Veronica Hargreaves*



**WINDSOR PRICE REPAIR SHOP**  
Automotive

Email: [mikeytwonames@icloud.com](mailto:mikeytwonames@icloud.com)  
Tel: 07468 521816

Unit 1, Hillocks Farm,  
Cleobury Mortimer, DY14 0EB.

 MOT	 Brakes	 Diagnostic
 Services	 Cam Belts	 Exhausts
 Repairs	 Clutches	 Tyres

## Mark Pearce

Landscape, Design and Rustic Garden Furniture

- Fencing
- Patios
- Drives
- Decking
- Garden Sheds
- Summer Houses
- Fence Panels
- Log Stores



And Much More

Top Quality Fully Treated Timber Products

Mobile: 07875425028

Tel: 01746718404

## Robert Bradley Logs

07794 798616



*Seasoned Firewood, Hardwood,  
Softwood or Mixed loads of logs.  
Free Local Delivery*



Fresh milk and cream from  
Cleobury Mortimer

[www.mawleytownfarm.co.uk](http://www.mawleytownfarm.co.uk)

01299 270359



## SKELLERNS

DOORS & WINDOWS



- UPVC Fascias & Guttering
- UPVC Windows, Doors & Conservatories
- General Home Improvements
- Re-roofing & general building work
- Replacement Glass
- Patio Jet Washing



Free No-Obligation quote. FENSA registered company with years of experience

Call Mike on: 01886 812250 or mobile: 07814 577739

[www.skellernsdoorsandwindows.co.uk](http://www.skellernsdoorsandwindows.co.uk)



Seeing butterflies on our walks and in our gardens is one of the delights of early summer though, sadly, not such a frequent experience as it used to be. We are lucky in the forest to see good numbers of Peacocks, Red Admirals, Yellow Brimstones and Small Tortoiseshells earlier in the year when warmer weather wakes them from hibernation. They seek out meadows and woodland rides and are also happy in gardens, especially those that are not too tidy and have room for wild flowers and patches of nettles. Other butterflies over-winter as a chrysalis or caterpillar and have to wait for spring to start their food plants into growth.



The forest is a home to such woodland specialists as the Pearl-bordered Fritillary, an orangey-brown butterfly with white 'pearls' along the edges of the undersides of both fore and hind wings and a central pearl in the middle of the under hind wing. (Mick Farmer's photo

shows the upper sides of the wings). If you have been out in the right place at the right time you may have already seen them fluttering along the edges of woodland paths, looking for violets on which to lay their eggs. The Small Pearl-bordered Fritillary should appear this month. It is smaller (not surprisingly!) but is hard to identify unless you see it beside its larger relative or it settles with its wings up to let you see the black spot next to the pearl on its under hind wing. Many years of hard work have gone into understanding the habitat requirements of these species and recognising that open areas of coppice and rides, where the butterflies can find shelter, warmth, nectar and places to lay eggs, have allowed them to survive. As a result there are deliberate efforts to recreate these areas, which benefit woodland birds as well.

Even species of butterfly which live deep in the forest are not immune to the destructive effects of factors such as widespread pesticide use in the wider countryside (and gardens as well). Protection of butterflies cannot be achieved by creating 'island' nature reserves whose area is too small to allow natural movement and space for genetically-diverse populations. If we care about our wildlife we need to push for an approach to land use which is sustainable, in agriculture, forestry, urban spaces and the 400,000 hectares of gardens in the nation. This is the way we will protect our own future as well.

Linda Iles



**THE CLEOBURY  
COUNTRY CENTRE**

Contacting us:  
t: 01299 272 300  
e: [business@cleoburycountry.com](mailto:business@cleoburycountry.com)  
[www.cleoburycountrycentre.com](http://www.cleoburycountrycentre.com)

### Upcoming Training Courses:

Food Hygiene L2—£70+VAT—07.06.22

EFAW-£75+VAT—21.06.22

EFAW/Pediatric FA-£150+VAT-28,29/06/22

Fire Marshall—£70 + VAT—30/06/22

### Cleobury Country Farmers Market

Saturday 18th June 2022



**BILL'S QUALITY METALWORK**  
**5 GREENFIELD ROAD, CRAVEN ARMS, SY7 9QU**  
**Manufacturing Made to Measure Gates and Railings**  
**~Balconies and Staircases, Handrails, Carports,**  
**Structural Steelwork and Mobile Welding Service.**  
**Phone Bill on 07973 248 016 or 01588 673 914**  
**Office for a free quote**



**Heath Farm Meats, Baginswood**

**Opening Hours**

Wed 8am to 5.30pm, Thurs 8am to 7pm, Fri 8am to 5.30pm, Sat 8am to 12.30pm

**Straight from Our Farm to Table**

We rear & sell all our own beef, pork, lamb & mutton through our shop on farm.  
 We also make our own flavoured sausages, burgers, home cured bacon,  
 gammon etc. No order to large or small.

Hams ● All Poultry ● Honey ● Mawley Milk & Cream ● Ashley's Cakes & Bread ●  
 Jams ● Eggs ● Cheeses ● Apple Juice ● Potatoes ● Meat Pies ● Sticks & Logs

Telephone 01746 718732 with your order to arrange a date & time for collection



**Electrical & Security**

**Tel: 07973 112463 (Anytime)**

**01299 489223**



- Full/ Part Installations
- Existing System Updates
- Alarm & Security Systems
- PAT Testing
- Domestic and Commercial Properties
- Electrical Problems

- Landlords & Electrical Safety Certification
- Upgrades
- Free Callouts and Quotes
- For Existing and New Installations and Security.

Part P + Full Scope Registration

Card Payments Accepted



**Fast Friendly Service, No Job Too Small**



**FOR ALL YOUR ACCOUNTANCY REQUIREMENTS**

**[www.fairway-accountants.co.uk](http://www.fairway-accountants.co.uk)**

**Head Office: 01299 822283**  
**[team@fairway-net.co.uk](mailto:team@fairway-net.co.uk)**

**Simon Hector: 07896 439594**  
**[sih@fairway-net.co.uk](mailto:sih@fairway-net.co.uk)**





## Philip Dunne's Letter from Westminster

### Her Majesty's Platinum Jubilee

As I write this in May, the sense of excitement around Her Majesty the Queen's Platinum Jubilee celebration is already building.

Her Majesty's attendance last month at the Royal Windsor Horse Show, following some absences from public events due to mobility issues – including the State Opening of Parliament last month for the first time since 1963 – was met by rapturous applause and a standing ovation.

I know the special four-day Bank Holiday weekend to mark Her Majesty's 70-year reign will be enjoyed by people all over South Shropshire, including those who have arranged special events to mark this unprecedented milestone in our royal history.

With many events taking place across South Shropshire, very regrettably I cannot be at every one to which I have been invited. But I shall be joining as many as I can, to celebrate Her Majesty's remarkable reign and the way the monarchy still, almost uniquely, brings together entire communities to celebrate everything we love about the UK.

While community events are taking place all over the country, a series of national events will help mark the occasion, beginning with the traditional Queen's Birthday Parade – Trooping the Colour – on Thursday 2<sup>nd</sup> June. Friday will see a Service of Thanksgiving for The Queen's reign at St Paul's Cathedral, and on Saturday Her Majesty will attend Epsom Downs for the Derby.

This is followed by the Platinum Party at the Palace on Saturday night, with famous faces providing music and entertainment, all available on BBC One and iPlayer. On Sunday

5<sup>th</sup> June, over 60,000 people have registered to host Big Jubilee Lunches, and a Platinum Jubilee Pageant will bring to life iconic moments from The Queen's reign, with over 10,000 people involved, showcasing our changing society over the past 70 years.

As part of the celebrations over the weekend, I shall also be lighting one of the Platinum Jubilee Beacons – one of thousands of beacons across the United Kingdom, Channel Islands, Isle of Man, UK Overseas Territories and the Commonwealth forming a chain of light. Beacons have traditionally been lit to mark royal celebrations, including Queen Victoria's Diamond Jubilee, as well as Her Majesty's Silver, Golden and Diamond Jubilees.

Most events in the community are locally publicised, but some in South Shropshire have further details on <https://platinumjubilee.gov.uk>, if you are looking to join celebrations.

After the horror of coronavirus and its impact on all of us, this celebration of Her Majesty's unprecedented 70-year reign is the first major national opportunity to come together in celebration. The length of her reign means that the Queen has been a consistent presence in the lives of most of us, providing a national figure we look to in both times of tragedy and celebration. Her message to the nation at the beginning of the pandemic was a perfect example of this important role for the nation. So I hope, at this new moment of celebration, everyone in South Shropshire is able to enjoy a special and memorable weekend.

*Philip Dunne*



### COACH HOLIDAYS & DAY TRIPS

Discover your next holiday by coach! Book with Whittles Coaches, established for over 95 years and based in Kidderminster. Whittles Holidays include:

- ✓ Home Pick Up & Return Service from your Door!
- ✓ Comfortable & Relaxing Coach Travel
- ✓ Be Looked after from Start to Finish by our Drivers
- ✓ High Standard Hotels with Good Food
- ✓ Included Sightseeing Excursions
- ✓ Afternoon Tea on Outward Journey
- ✓ Portage of your Luggage

**LOW DEPOSITS - BOOK FOR ONLY £50 PER PERSON!**

**CALL 0845 485 2434 FOR YOUR FREE BROCHURE | [WWW.WHITTLECOACH.CO.UK](http://WWW.WHITTLECOACH.CO.UK)**

**Do you suffer from heat loss, outside noise or draughty windows like many older properties?**

**Bespoke  
Secondary  
Glazing**

Secondary glazing from Lansec greatly reduces draughts and heat loss while retaining the traditional appearance of your original windows

- **Recommended** by Historic England for heritage and Grade 2 listed buildings
- **Barely visible** from inside or outside
- **Colour matched** to your existing windows
- **10 year** material and labour guarantee
- **Local**, family run business



**01299 544013**  
**lansecglz.co.uk**

**LANSEC**

Unit 4 Blackmanstitch, Long Bank, Bewdley, Worcs DY12 2QW



## Bayton Church of England Primary School

*- Be the best you can be, as a child of God -*



[www.baytonceprimary.co.uk](http://www.baytonceprimary.co.uk)

01299 832393

[office@baytonpri.worcs.sch.uk](mailto:office@baytonpri.worcs.sch.uk)

Call or email to book an appointment to visit our school and meet our staff.

*"We offer an alternative and unique Primary School experience, in an idyllic rural setting. A small family-orientated school with a caring ethos and traditional values, coupled with excellent results. If you want the very best for your child, come and visit us."*

*Ms. Jolanda Simmonds  
Head Teacher*

*\*Spaces currently in Years 4, 5 & 6, and we are also welcoming Parents & Carers of September 2019 intake.  
Governor vacancies – please call for information\**

Rated "Outstanding" in our latest SIAMs inspection (March 2018).

Friendship – Hope – Perseverance – Compassion – Trust – Forgiveness – Responsibility – Respect – Truthfulness

Our school vision: We aim for everyone to be a part of our community, be life-long learners who are confident, enthusiastic, valued and reach their God given full potential.



THE CHURCH  
OF ENGLAND  
DIOCESE OF  
WORCESTER



## LUDLOW FLOWER FESTIVAL

After all challenges of the last two years with Covid, St Laurence's flower team in Ludlow are well under way with plans to celebrate the amazingly good things that came to life in 2020 and 2021.

The flower team started fundraising for the festival with Cake and Christmas crafts at Ludlow's Medieval Bazaar, and are grateful to add sponsorship from Florabunda, Twigs, Borage & Bloom and the Ludlow War Memorial Group who are taking part in the displays, as well as churches in the Ludlow area. Our especial thanks go to McConnells for being our main sponsors.

We hope that the Flower Festival brings a buzz to the town with some amazing floral displays, a community art exhibition and musical events every lunchtime.

We would be grateful to anyone who would like to take part in the festival, with the setting up of the display on 6<sup>th</sup> to 8<sup>th</sup> July, or helping to keep the displays watered while the event runs. Please contact Sue Thornley 01584 872292.

The festival will be held at St Laurence's from 9<sup>th</sup> to 15<sup>th</sup> July.

Entry is free.

Sue Thornley

## FROM THE BANDROOM

Our Music at the Movies concert went very well, with a packed hall for our first concert in the Parish Hall in three years. A big thank you to everyone that turned out to support us!

Next on the calendar will be performances for the Platinum Jubilee weekend in Cleobury, when we'll be playing from 3.00 to 4.00 o'clock on the school field on the 4<sup>th</sup>, and at Abberley on 5<sup>th</sup> – wonderful to be part of this historical event.

We then have another double weekend of playing for a local wedding on 18<sup>th</sup> June, a Jubilee themed social gathering for us on that evening (seeing as we were all busy playing on the actual weekend) followed by Neen Sollars Fete on Sunday 19<sup>th</sup>, always a lovely sunny day.

The last Saturday in June takes us to Harvington for another very popular summer fete.

Katie Griffiths

## A CHALLENGE FOR THE MENS SHED

Anita Raymond, head teacher at the lovely Kinlet Primary School, has approached the Mens Shed with an unusual request. And the men being ready to take on a challenge are planning to come up with an answer.

Anita had seen a photo of a mini library at a school, where books can be borrowed and returned with no charge; an ideal way to encourage children to read and maybe share with their parents. When it's made and in operation, we'll happily bring you a picture of it, because a visit to that school is always a pleasure.

## BATHING WATERS

Philip Dunne MP advises us that Severn Trent Water is investing £78million to improve the quality of river water, including the River Time at Ludlow. It's part of STW's Green Recovery plan to provide 15 kilometres of bathing quality water by 2025, in this instance covering Shropshire and Warwickshire. Clean water for the simple pleasure of river bathing in a safe and healthy environment is good news.

**No.19**  
**The Beauty Room**  
with Jane Weaver

Wash away the aches, pains and stress of everyday life by indulging in a relaxing Swedish massage, any combination of back, shoulder, neck, arms and legs, ½, ¾, 1 or 1½ hrs, or treat yourself to a manicure/pedicure, waxing or tinting.

Telephone consultations available to discuss any personal requirements, treatments available at No.19 or in your own home.  
Contact Jane on 07968 582269 or email [19thebeautyroom@gmail.com](mailto:19thebeautyroom@gmail.com)

*Just like the lotus flower we too have the ability to rise from the mud, bloom out of the darkness and radiate into the world!*







Soft furnishing and  
Interior Design Services

**Masquerade**  
Fabrics Limited

**01299 271 680**  
36 High Street Cleobury Mortimer near Kidderminster  
Worcestershire DY14 8DQ

Retailers for Sanderson, Harlequin, Monkswell  
Crowson and many more...

Comprehensive design, measuring and fitting service.





## The Lamp Restaurant

15a High Street, Cleobury Mortimer, Shropshire, DY14 8DG

01299 272785 or 01299 271313

Fully Licenced and Air Conditioned

Serving Bangladeshi & Indian Cuisine



**The Lamp Restaurant winner of Currylife award chef of the Year**

Open 7 days a week from 6.00pm until 11.00pm

The Lamp's cuisine, inspired by Sylhet, the second city of Bangladesh, offers a wide variety of choice along with established favourite dishes and a selection of Chef's Specials.

The wide variety of starters and accompaniments chosen by our chef to complement your main course.

Takeaway service offers free delivery up to 3 miles for orders over £15.00.

Find us on Facebook: Lamp Inn Cleobury Mortimer



## Michael Coombes

### Roofing & Building Maintenance.

Complete Re-roofing, Roof repairs, Pointing & Chimney repairs.

Slabbing & Brick work

Wall & Floor Tiling

Painting & Decorating

Over 20 Years experience in the Cleobury area.

**Call Michael on 07854 047413**



## APSupplies



- ◆ Specialists in equestrian and field maintenance
- ◆ Haylage, hay and straw supplied
- ◆ From chain harrowing to mowing and baling
- ◆ Fencing to ménage maintenance
- ◆ Woodland management and coppicing
- ◆ Concrete pads and sheds all at competitive rates

APSupplies.....Call today for a chat !



Ant Harman: 07779239393



# The Clarion Vacancies Page



Bayton CE Primary School  
*Be the best you can be, as a child of God*

Bayton CE Primary School currently has vacancies, including foundation governor vacancies, on their governing body and encourages members of the community to put themselves forward to join them.

**Being a governor is**  
**\* a great opportunity \***  
**\* an important responsibility \***  
**\* a huge privilege \***

*Could you: make a real difference to the lives of local children and ensure they receive the education they deserve;  
influence important decisions for the school and affect how the school is run; and  
make links across the community by working closely with fellow stakeholders, parents and staff?*

## **What next?**

If you are interested in becoming a governor and feel ready to help improve the lives of local children and make a real difference in the community, please contact Hannah Coleman, Clerk to Governors, on [clerkg@baytonpri.worcs.sch.uk](mailto:clerkg@baytonpri.worcs.sch.uk) for further information, if you have any queries or would like an application form.

**We very much look forward to hearing from you!**

**Ever After Day Nursery are looking for an Early Years practitioner with a Level 3 in Early Years.**

**If you have a qualification in Early Years and have an ambition to work with children please apply for this post.**

**We are looking for someone hard working and enthusiastic, to work as part of team and want to help young children to develop through play.**

**You need to be able to carry out daily observations and planning.**

**Please get in touch with Lorna via email at**

**[everafternursery@hotmail.co.uk](mailto:everafternursery@hotmail.co.uk) or call 01299 272 777**

## **FLAT FOR RENT IN CLEOBURY MORTIMER**

**1 -BEDROOM , HIGH STREET LOCATION , TOP FLOOR , ELECTRIC HEATING ,  
AVAILABLE NOW**

**£495- P.C.M. PLUS UTILITIES DEPOSIT + REFERENCES REQUIRED**

**TEL: 01584 890225**



# TURNERS GATES

bespoke sizes at standard prices



A small family run business specialising in quality wooden gates to suit all entrances.

Visit our website: [www.turnersgates.co.uk](http://www.turnersgates.co.uk)

Drop us an email: [turnersgates@outlook.com](mailto:turnersgates@outlook.com)

Or give us a call on: 01299 270 965



Andrew Jordan (Jordy)  
[JRD.GROUNDWORK@GMAIL.COM](mailto:JRD.GROUNDWORK@GMAIL.COM)

Moors View  
Moors Lane, Oretton,  
Kidderminster, Worcestershire  
DY14 8RH



## AVAILABLE SERVICES

- Foundation & footings
- Concreting
- Driveways
- Ditching
- Drainage
- Landscaping
- General Building
- Fencing
- Hedgecutting
- Digger Hire
- All Jobs Undertaken

## TIME TO CLEAN YOUR OVEN? LET US DO THE JOB YOU HATE

- Ovens
- Grills
- Extractors
- Filters
- BBQs
- Microwaves
- Hobs
- Ranges
- AGAs

Call or go online today for your free estimate

**OVENCLEAN**  
The original oven cleaning specialists

07913 123543  
[ovenclean.com](http://ovenclean.com)



## **STOTTESDON'S ANCIENT CHURCH HAS A SAFE FUTURE**

Tremendous news for the Parish of Stottesdon and Saint Mary's, its church. After seven years of talking, negotiating and persuading, the National Lottery Heritage Fund has agreed a grant of £271,500 to bring the building through a repair programme and make the 1,000 year old structure more accessible for both worshippers and visitors.



Work will start this summer with repair work on the roof, the rainwater disposal system and the stonework. At the same time, a sustainable heating system and better lighting will be installed, to make the place more welcoming and its many outstanding historic features easier to inspect. There will also be a complementary programme of opportunities to get involved in the work and learn about the history all around the place.

A lovely idea to involve people will be hands-on learning and training opportunities like replica tile-making workshops, working with Jackfield Time Museum of Ironbridge, and churchyard trails and surveys with those industrious and caring people from 'Caring

for God's Acre'. The whole operation will happen under the title 'Stottesdon Parish Church, Past, Present and Future', which tells you that it is planned to keep the whole church environment in good, easy-to-reach order.

Also planned is a smartphone based Digital Explorer Trail along with newly researched historic work to guide visitors around the treasure trove that is contained within Saint Mary's. Like a carved Saxon period Tympanum dating from about 900, a Norman font from around 1138, Medieval floor tiles and Medieval and Victorian stained glass, the peal of Heritage Bells dating from 1552 and the Jacobean pulpit from about 1620. Plus a turret-clock from 1855 and a classical arts and crafts rood screen from 1901. What a remarkable collection of historic pieces to fascinate any visitor. And to help those visitors around all this, there will be trained volunteers to lead monthly guided tours and offer specialist behind-the-scenes events like visits to the Bell and Clock Chambers.

The church building itself is unusually large and reminds us of the importance of Stottesdon as an historic centre; it was the administrative centre for the Condertree Hundred and the principal market town and the base for the local justices.

Huge credit must go to all those in the community who've worked to get this idea up and running for about seven years. What the village has now is an outstanding chance to show off its remarkable history and an even more remarkable revival. The National Lottery Heritage Fund recognised the value of what had been tucked away too long - now their imagination and backing will make it visible to all. We tend to take the Lottery funding almost for granted, but it's worth remembering that since it started 28 years ago over £43 billion has been raised for projects. And more than 635,000 grants have been awarded across the UK.





Remember to follow us

# Doddington Lodge Post

## SUNSHINE & CELEBRATIONS



It's been a month of enjoying live music, cream teas and spending time in the lovely Doddington Lodge gardens in the glorious sunshine. A highlight was the celebration of International Mexican Day. We certainly got in to the Mexican spirit and celebrated in style. Colourful decorations, fun traditional games, a delicious Mexican menu and an extra special visit from our dear friend Liz Vanegas de Quickenden, who wore the beautiful Mexican traditional dress. What a bright and vibrant day it was, all our residents and team members had a wonderful time.



## THE DODDINGTON LODGE VILLAGE COUNTRY FAIR

On Saturday 23rd July 2022 we will be hosting our annual Doddington Lodge Village Country Fair. Join us and be part of this wonderful community day of celebrations.

Follow us on Face Book for more information or email: [reception@doddingtonlodge.com](mailto:reception@doddingtonlodge.com) to be added to our mailing list.

[www.doddingtonlodge.com](http://www.doddingtonlodge.com) | E: [enquiries@doddingtonlodge.com](mailto:enquiries@doddingtonlodge.com) | T: 01584 707084



## Join our team

*and make a real difference...*

Becoming part of the Doddington Lodge family is really something special. Our team is built on a shared purpose, to provide outstanding care for our residents and support for loved ones. We invest in our team members, helping them progress and develop within their roles and career path. More than ever we are looking for the right individuals who can really make a difference. If you believe you have the right skills please email your CV to: [enquiries@doddingtonlodge.com](mailto:enquiries@doddingtonlodge.com) or visit [www.doddingtonlodge.co.uk/careers](http://www.doddingtonlodge.co.uk/careers).

## Current Vacancies

- SENIOR CARER
- DAY CARE ASSISTANTS
- CHEF/COOK
- DOMESTIC ASSISTANT

To apply please send your CV to [enquiries@doddingtonlodge.com](mailto:enquiries@doddingtonlodge.com)



## ART & CRAFT ACTIVITIES

Rachel & Rachel, our Activities Co-ordinators have been busy with lots of wonderful Arts & Crafts with our residents. Audrey and Vera love spending an afternoon painting with watercolours. We have also been pressing wild flowers from the Doddington Lodge gardens. Lots of lovely things planned each day for our Residents to enjoy. Games, reading, baking and arts & crafts. Taking walks in our beautiful gardens in the fresh countryside air. Every day is different, we make sure there is something for everyone to get involved with and enjoy time with the Doddington Lodge activities team.



## ★ TEAM SPOTLIGHT ★

*Charlie*

Charlie is 20 years old and lives locally in Cleeton. She began working as a Part Time Care Assistant at Doddington in November 2021. Charlie is such an inspiration, as well as working at Doddington she is a volunteer at the local veterinary surgery, as she is also busy studying Animal Management at college, her dream is to become a Veterinary Nurse.

With her love of animals, Charlie has 2 Labradors & 1 Cocker Spaniel, Buddy, Ruby and Nala. She enjoys spending time walking them and keeping active, also enjoying time spent with friends and family. Charlie is a valued member of the Doddington Lodge Team & we are proud to be part of supporting her in her career goals.

[www.doddingtonlodge.com](http://www.doddingtonlodge.com) | E: [enquiries@doddingtonlodge.com](mailto:enquiries@doddingtonlodge.com) | T: 01584 707084

## CARTER'S ANTIQUES



We are looking to purchase all manner of antiques, jewellery, coins, medals and curiosities.

For a free valuations kindly telephone

**John Carter: 07779 311792**

Or email: [johnbarney743@gmail.com](mailto:johnbarney743@gmail.com)

## SINGING LESSONS

Professional singer and experienced teacher recently moved to this area  
Vacancies available

All styles, ages, standards welcome  
Contact Angela Kazimierczuk on  
07870 506655



**Natalie Taylor** Dip CFHP MPS Pract.

**Specialist Foot Health Practitioner**

Specialising in:-

- In-growing toenails
- Fungal infections
- Nail trimming
- Verrucae
- Calluses
- Corns

All from the comfort of your own home.

If you would like to make an appointment, please call on **07779 113982** or **01584 890112**



## COUNTRY SKILLS

CPCS/NPTC Approved—fully insured

- Outside Renovation
- Tree Surgery, Hard Landscaping
- Slabbing and Fencing
- Decking, Roofing
- Contract Mowing

Call for a free quotation

R. Price & Sons

Mobile: 07967 140720 Email: [roger@country-skills.co.uk](mailto:roger@country-skills.co.uk)

## Painter/Decorator Christine Smith

Friendly, local, female professional. Any job considered: including Indoor/outdoor, walls, windows and doors, wallpaper & preparation. DBS checked. Fairly priced. Free quotes.

**Call: 07977296335**

**E: [clsartcontact@gmail.com](mailto:clsartcontact@gmail.com)**



## Precious Memories

*Funeral Celebrant - Carol Clayton*

07971 543790— 07942 774560

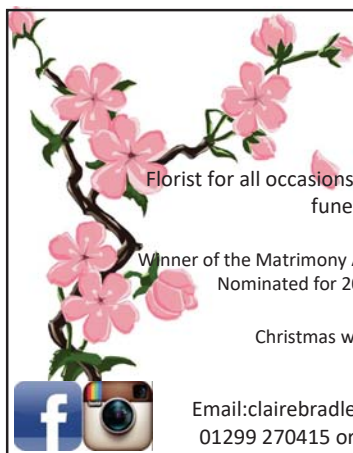
South Shropshire—North Herefordshire—North Worcestershire

[Celebrant@hoskinsfuneralsdirect.co.uk](mailto:Celebrant@hoskinsfuneralsdirect.co.uk)

[www.hoskinsfuneralsdirect.co.uk/celebrant](http://www.hoskinsfuneralsdirect.co.uk/celebrant)

FB: @preciousmemoriescelebrant

*Everyone has a story to tell—I'd be honoured to be the one to tell the story of your Loved One.*



*Claire Bradley  
Floral Designs*

Florist for all occasions, specialising in wedding and funeral flowers

Winner of the Matrimony Award 2020 Best Wedding Florist  
Nominated for 2021 Matrimony Awards

Christmas workshops available



Email: [clairebradley1@icloud.com](mailto:clairebradley1@icloud.com)  
01299 270415 or 07980 580770



## Domestic oil-fired boiler breakdown & maintenance services.

27 years' field-service experience with leading UK boiler manufacturer Worcester Bosch.

**Donovan Taylor**

**Tel: 01299 828670 or 07807 837040**

[donovan.taylor@sky.com](mailto:donovan.taylor@sky.com)

[www.greenstar-boiler-repairs.com](http://www.greenstar-boiler-repairs.com)

Caring about your environment and providing an honest, professional & reliable service you can trust





A small local business.

I am a qualified lawyer with over 30 years experience offering a personal and approachable service.

I undertake specialist will drafting, lasting powers of attorney, deputyship applications and probate.

*"I've used Mandy at Westons Wills and Probate numerous times over recent years covering all aspects of her expertise. Her guidance on the way forward and solutions to issues that she has suggested has been excellent. She is extremely communicative and responsive, and handles difficult situations with compassion and empathy. I have happily and confidently recommended her services to everyone I know that would benefit from her services."*

*"Mandy Weston of Westons Wills and Probate is a very professional and knowledgeable person. She has now become my 'go to' legal adviser and has taken on many legal tasks for me and my family. Wills, Probate, Inheritance Tax and Powers of Attorney. I trust her judgement and experience to act in mine and my family's best interest. I would highly recommend her legal services to anyone."*



**Contact me today**

**"Great expertise and a friendly professional manner"**



**Contact** Mandy Weston **Phone** 01299 405873 **Mobile** 07931 411733

**Email** [mandy@westonswillsandprobate.co.uk](mailto:mandy@westonswillsandprobate.co.uk) **Website** [www.westonswillsandprobate.co.uk](http://www.westonswillsandprobate.co.uk)

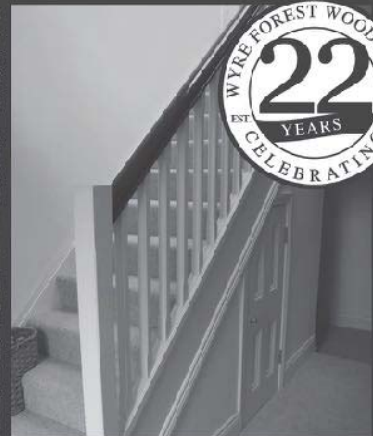
**Address** The Old Snuff Mill Warehouse, Park Lane, Bewdley, Worcestershire DY12 2EL



**WYRE FOREST  
WOODCRAFT**  
purpose made joinery

**Specialists in the Manufacture  
of Purpose Made Joinery**

- Tailor Made Timber Windows
- Traditional and Contemporary Style Timber Doors
- Custom Made Staircases
- Bespoke Conservatories
- Made to Measure Gates




TO SEE EXAMPLES OF OUR FULLY FACTORY FINISHED JOINERY VISIT OUR WORKSHOPS AND SHOWROOM

[www.wyreforestwoodcraft.co.uk](http://www.wyreforestwoodcraft.co.uk)

01562 68100 | [enquiry@wyreforestwoodcraft.co.uk](mailto:enquiry@wyreforestwoodcraft.co.uk)

Oldington Lane | Firs Ind Est | Kidderminster | Worcestershire | DY11 7QN

**IRENA** S.A.C DIP. (DIST). N.C.F.E. M.C.F.H.P.  
FOOT HEALTH CARE PRACTITIONER




All your foot problems dealt with:-

- Foot health check • Verrucas etc.
- Corns • Medical Manicure
- Callus • Medical Pedicure

Free vascular Doppler Check of your feet

The Old Farmhouse  
Button Bridge, nr Bewdley  
DY12 3AW



Mobile visits available  
01299 841 277  
hessins@gmail.com

## Paul Harding



## Tree Services

- Tree surgery and felling
  - Woodland thinning & maintenance
  - Hedge trimming & grass cutting
  - Supplier of hardwood logs, kindling and garden bark
  - NPTC certified fully insured. Domestic and commercial work undertaken.
- Tel 01584 890 993 Mob 07970 878 224**

## Hollywaste Holiday Lets

Our 2 bedroom (ensuite) cottage, sleeps up to 6 adults, situated in Hollywaste, Cleobury Mortimer. Fully equipped kitchen, open plan living room with log burner, dining area and downstairs WC. Includes Freesat and fast WiFi. There are enclosed & open decking areas outside, to take advantage of the beautiful countryside views, and a grassed area for outdoor games.

Open all year round and welcomes adults, children, 1 large dog or up to 2 small dogs

Discount of 10% available for locals simply quote "keepitlocal" at the checkout

Events we can accommodate:

Staycations, Pamper weekends, Shooting weekends, Wedding venue, Minimoons stays, Stargazing weekends, Cookery weekends & events, Camping and caravan pitches are also available!

If you're interested in hiring our space or land for any event and time frame.

Tel: 07962 151322 Email: [hollywasteholidaylets@gmail.com](mailto:hollywasteholidaylets@gmail.com) FB: <https://www.facebook.com/HollywasteHolidayCottage>

Website: <https://hollywasteholidaylets.squarespace.com> for more information



## Kingfisher Crafts

Sally Serrell-Cooke

07890 721657 | [kingfishercrafts299@gmail.com](mailto:kingfishercrafts299@gmail.com)

Visit me on Etsy and Instagram: **KingfisherCrafts299**



New Baby Hampers (Travel Changing Mat, Bibs, Nursing Towels, Quillow) \*  
Placemat Sets \* Wine Gift Bags \*  
Cafetiere Jackets \* Festive Gifts



## VANDA'S BIG WALK



*Vanda with her medal and the vital check-off mile chart.*

After a routine visit to the doctor I was told I had very high blood pressure and was a high risk of suffering a stroke. One of the things to be done was walking after work, but walking wasn't really the agenda. Then, scrolling through Facebook, it popped up: "Walk 100 miles through Apri" in aid of the Royal British Legion. As an active member I thought this was a great idea, two birds with one stone.

So I applied and my tee-shirt arrived in the post, plus my check-off mile chart and I'm away. I'm not saying it was easy; I found it difficult, but being determined I worked out a route of three miles around

where I live. I wore my tee-shirt with pride, the donations came in and my sponsor form was filling up. I soon reached my target of £200 and received a medal from the Royal British Legion. Wow! I loved it. The walking carried on and so did the the support. The last mile and I was so proud of myself for finishing. I raised £460 in total and would like to thank everyone that donated and sponsored me. And yes, my blood pressure is coming down nicely!

*Vanda Kemp*

## JULY OPEN GARDEN

Chris and Jo Bargman will be opening their lovely garden at 'Upper Marches' on Catherton Common on Sunday, July 3rd, from 12.00noon until 5.00. It will be clearly signposted as you leave the wooded area and it's part of the National Gardens Scheme that sees a wide range of gardens welcoming visitors and raising funds too support vital charities. This one has a very individual approach and left our gardening correspondent Simon full of praise when he visited two years ago. How good it is to have the nationwide scheme back in operation.

## THE GARDEN TRAIL

Delayed by two years due to Covid, the world famous Cleobury Mortimer Garden Trail will take place on Sunday 26<sup>th</sup> June from noon until 4 pm. There will be 10 gardens to view, ranging from small and nearly new to large and long established. All are within reasonable walking distance of the Town centre and programmes will cost £5 per adult (accompanied children free) which has been unchanged since 2014. Tickets and refreshments will be available on the day at St Mary's Church. All proceeds will be divided equally between the Friends of St Mary's and the Shropshire Historic Churches Trust which has provided grants to us in the past (and hopefully in the future). This year's Trail is also in memory of Joyce Wakeman of Caer Beris who sadly died last month. She created this garden from scratch and faithfully tended and improved it for 55 years. Please make a note in your diary and join us for a very pleasant summer afternoon.

*Steve Todd*



**CLEOBURY  
THE COUNTRY  
CENTRE**

Contacting us:  
t: 01299 272 300  
e: [business@cleoburycountry.com](mailto:business@cleoburycountry.com)  
[www.cleoburycountrycentre.com](http://www.cleoburycountrycentre.com)

### Upcoming Training Courses:

Food Hygiene L2—£70+VAT—07.06.22

EFAW-£75+VAT—21.06.22

EFAW/Peadiatric FA-£150+VAT-28,29/06/22

### Cleobury Country Farmers Market

Saturday 21st May 2022



**CARDS, GIFTS, HOMEWARE, HARDWARE AND EVERYDAY ESSENTIALS!**

Friendly Staff, and a great range of stock with prices to match!

If you need it, and you want it! We've probably got it!

Pop inside before you pop online!

**18 High Street, Cleobury Mortimer**

**Tel: 01299 489590**

**Email: [cleoburrs.onthehighstreet@gmail.com](mailto:cleoburrs.onthehighstreet@gmail.com)**

**Like our Facebook page CLEOBURRS**

**Keep up to date with the latest products!**



- Professional tree stump removal by qualified expert
- fully insured
- Quotes given
- Domestic or commercial work undertaken

Email: [sam@gwstumpremoval.co.uk](mailto:sam@gwstumpremoval.co.uk)

Mobile: 07787095668 Home: 01299832549

**Rachel Siddall**

DipCFHP, MPSPract

Footcare in the privacy of your own

home:

Nail trimming  
Ingrowing toenails  
Corn removal  
Thickening nails  
Callus reduction  
Verruca treatment  
Diabetic foot care



**07478 007913**



**Hobbs Building Services**

EST 25Years.

A Total Plastering, Maintenance and Building Service for your home,  
business and outbuildings.  
Insurance work undertaken

Emergency call out service for general plumbing, roofing, boarding up damaged doors and  
windows. For a free quote please call;  
Ian on; 07967190742  
Email: [hobbsbuildingservice@yahoo.co.uk](mailto:hobbsbuildingservice@yahoo.co.uk) Or Call/Text Kelly on; 07790085307



**Cleobury Mortimer Benefice**  
**Church services throughout the Benefice in June**

**St Mary's Cleobury Mortimer**

Sunday 5<sup>th</sup> June– 10am Family Eucharist  
Sunday 12<sup>th</sup> June – 8.30am and 10am Eucharist  
Sunday 19<sup>th</sup> June– 10am Eucharist  
Sunday 26<sup>th</sup> June - 10am Eucharist

**St Michael and All Angels', Hopton Wafers**

Sunday 5<sup>th</sup> June - 9.30am Eucharist  
Sunday 19<sup>th</sup> June - 9.30am Eucharist

**St John the Baptist, Doddington**

Sunday 12<sup>th</sup> June– 11.am Eucharist  
Sunday 19<sup>th</sup> June – 3pm Evening Prayer

**All Saints', Neen Sollars**

Sunday 5<sup>th</sup> June– 11.am Village Worship  
Sunday 12<sup>th</sup> June – 11.am Eucharist  
Sunday 26<sup>th</sup> June– 11.am Village Worship

**St George's, Milson**

Sunday 5<sup>th</sup> June– 6pm Jubilee Service  
Sunday 19<sup>th</sup> June – 11.15 Eucharist

**St Mary's, Neen Savage**

Sunday 5<sup>th</sup> June – 6pm Evening Prayer BCP  
Sunday 19<sup>th</sup> June – 11.15 Eucharist

**St John the Baptist, Kinlet**

Sunday 5<sup>th</sup> June - 6pm Jubilee Service  
Sunday 12<sup>th</sup> June – 11.15 Eucharist BCP  
Sunday 26<sup>th</sup> June – 6pm Evening Prayer BCP

**DROP IN AT ST. MARY'S**

With St. Mary's Pastoral Care Group, every Thursday: 10.00 am – 11.30am  
Drop in for a free cup of coffee/tea and biscuit with the chance to have a chat and share problems.

UKRAINE: Thinking of hosting refugees?

Are you here from Ukraine and want to meet up with others? Please join us.

Access to support and advice if needed.



The Church Office is open Tuesday and Thursday from 9.00am-3.00pm  
Contact details: Grace Johnson cleoburychurch@hotmail.com  
Tel: 01299 272916

# Cleobury Opticians

NHS & private eye tests ♦ FREE children's glasses

FREE NHS glasses ♦ Home visits



## Opening Times-

<b>Tuesday</b>	9am-1pm 2pm-5pm
<b>Wednesday</b>	9am-1pm 2pm-5pm
<b>Thursday</b>	9am-1pm 2pm-5pm
<b>Friday</b>	10am-2pm
<b>Saturday</b>	9am-1pm

[www.cleburyopticians.co.uk](http://www.cleburyopticians.co.uk)

16 Church Street, Cleobury Mortimer, Kidderminster  
DY14 8BX

Tel: 01299 270012

Email: [cleburyopticians@outlook.com](mailto:cleburyopticians@outlook.com)



All Aspects of carpentry work undertaken

Level 3 City & Guilds in Carpentry & Joinery, 20 years of experience

Tel: 07854 032750

Email: [duncpearce1@gmail.com](mailto:duncpearce1@gmail.com)

## Stewart Mumford Architectural Services Bespoke Architecture

Great value personal service backed up with extensive local knowledge, established links with other construction professionals to ensure comprehensive packages specifically tailored to individual needs.

Initial consultation free of charge.

Specialist in Works to Listed Buildings, Affordable Houses, Open Market Houses, House Extension and Alteration, Barn Conversion and Commercial Projects.



T: 01299 271068

M: 07977 921039

E: [office@stewartmumford.co.uk](mailto:office@stewartmumford.co.uk)



## **Simon Morton in the Garden.**

### **Remembering Opa**

This month's offering is dedicated to Stan Morton. You probably won't know him, even though he was born locally and a frequent visitor to the area. He does, however, deserve some recognition in the pages of the Clarion.

Why? Well, he was my Grandad. He also managed to clock up 99 very full years. But more pertinently, he was a remarkable gardener. Truly amazing. Stan had the greenest fingers. Ever.

'Opa' (he met and fell in love with a German girl during the war, so the traditional 'Nana & Grandad' nomenclature was swapped to 'Oma and Opa') was able to turn any patch of ground into an oasis of colour. Their postwar house stood out from the others on the close because of the riot of colour, front and back. As a child. I'd watch him tirelessly deadhead into the summer evenings, walking around the tiny plot with pride (and a bottle of beer) and repairing the damage I'd made with my inexpert football control. He was at one with his garden.

Opa also had a habit of getting into trouble. There was a time when we got chased away for scrumping apples (he was well into his sixties by then), and he thought nothing of sneaking a pair of secateurs into a National Trust garden and collecting a few cuttings. Those green fingers performed miracles, coaxing bedraggled clumps of leaves back into life and eventually into the ground as strong and verdant plants.

Oma and Opa worked hard, built a family firm of flooring contractors - "Get laid by one of our fitters" was the strapline (don't judge - these were different times) - and eventually moved out to the Vale of Evesham. Oma was delighted with the new house, but for Opa, it was all about the garden. I'd visit, and he'd proudly walk me

around the vast plot, excitedly sharing plans for a mini orchard, a gazebo, a wildflower meadow...the list of projects seemed endless. Over a few years, the plot evolved into a masterpiece that could have graced the pages of the glossiest gardening magazines.

When Oma died, Opa turned to his garden for solace. By now in a smaller house, he created a tapestry of bedding plants in the front garden that matched the pattern of Oma's favourite duvet cover. That's quite a magnificent way to honour his beloved wife.

Opa loved visiting us and pottering around our garden. By now, I'd caught the gardening bug, and his hints and tips are behind many of the small victories in our own patch. When lockdown hit, I sent him videos of new beds dug and new plants planted.

He'd passed on the gardening baton, and I hadn't even noticed.

Opa passed away a few weeks ago. When my Aunt and I started clearing his house, Opa's love of gardening was apparent. Every windowsill adorned with small yoghurt pots of seedlings. His tiny greenhouse full of incomplete projects.

The shed full of the tools he used to bring life to cuttings purloined from the finest gardens in the land.

99 is a good innings, and Opa squeezed as much out of each year as possible. In terms of a legacy, his unbridled passion for the outdoors and gardening lives on in me, and that's something I know he'd be chuffed about.

It's just a shame I didn't get those green fingers...

*Simon Morton*

Bespoke framing and mounting for:

- Artwork
- Photographs
- Canvases



## The Framing Studio Cleobury Mortimer

Paul Serrell-Cooke  
07791 378240

*Bringing artwork and images to life*



# Quality firewood for sale

We source our wood from a reputable and sustainable source.

We advise customers to always buy well in advance of the next winter season. This allows further drying to get the wood to an optimum level.

Can deliver up to 20 mile radius from Bayton (DY14 9NA).

We can do multiple and large loads.  
Please call to enquire on pricing.

John Edwards 07531025018



H.C.P.C Number CH22527

## Cleobury Chiropractic Janet Manley

Qualified Chiroprapist  
MSSCh. MBChA  
BSYA (reflex) REIKI Master

Tele:- 01299-272841

Mob:- 07805-268439

Email: janetpmanley@yahoo.co.uk

2, Tenbury Road,  
Cleobury Mortimer,  
Kidderminster,  
Worcs.  
DY14 8RB

## A Round Of Appaws

Professional Dog Groomer  
C&G Levels 2 & 3 Diploma

Fully Insured

Call or text Jules on  
07368359144

aroundofappaws1@gmail.com



## A. Farr Painting & Decorating

Give your home a beautiful new look....

Contact:

andyfarr12345@gmail.com 07815 855340

# Cuitar Lessons

With an experienced local tutor  
Teaching for 26 years privately and in schools

Exams available. DBS certificate

All ages, styles and abilities welcome

Contact Mark for more information @

MARK.CHECKLEY@sky.com

01746 718636 - 07708 386433

## ANDY THOMPSON'S GREAT RUN

Andy put in a sensational run as part of the London based Dirty Weekend in May. The event raises funds for Children With Cancer UK and for most it involves running 20 miles and coping with 200 objects along the way. But Andy's made of sterner stuff and to raise money in memory of Jack Edwards, the local lad who tragically died of leukaemia at the age of seven, Andy doubled the run, completing 40 miles and 400 objects in 10 hours 50 minutes!

You can back Andy's efforts with a donation on just [giving.com/fundraising/andrew-thompson999](https://giving.com/fundraising/andrew-thompson999).

## NEW SPED LIMIT



Spotted by the sharp-eyed Shaun Middleton as you drop down the hill from Mawley

into the smart new road markings, this part was not quite up to the usual Shropshire Highways standard.

Thanks Shaun. It's gone now.

## THE BOUNDS WELL POUNDED

The annual Pound the Bounds around Rock parish was held on May 1st and drew hundreds of walkers, joggers and runners for this 22nd year of Walk4Life. They had a choice of routes, from a three mile walk for the very young through to a 26 mile whopper of a trek. All proceeds to the Midlands Air Ambulance Charity, as usual.

A super event, drawing support from a wide area to help this great rescue service. No final figure advised when we went to press, but we'll try to have it in time for the July issue. And well done all who worked on the organisation or sweated on the walk.

## HOPE HOUSE HOSPICE

Diane Murr writes from Hope House to ask if the Clarion will give support to them as they seek new volunteers to work in their shops. In this particular case it's the Ludlow branch.

The Hospice offers support to children with an end of life illness, the situation any parent dreads. They use the phrase "We're here because no one should face the death of a child alone." That hits home to any adult who has witnessed the loss of a child, be it their own or that of a neighbour. This town saw the support we all gave to young Jack Edwards' parents and witnessed their grief. Who could refuse to support a hospice which sets out to help parents and their child in that situation. Of course we will give their recruitment drive publicity.

Diane is based at Oswestry and is on 01691 6795679, 07884 096374 or email [diane.murr@hopehouse.org.uk](mailto:diane.murr@hopehouse.org.uk). To learn a little more about the charity, try their website: [www.hopehouse.org.uk](http://www.hopehouse.org.uk)

## THANKS, BARCLAYS

Philip Dunne MP advises that Barclays Bank have announced the closure of their branches at Ludlow and Bridgnorth on August 26th. So no Barclays branch in the Ludlow constituency. How kind.

## Worried about rising mortgage rates? Buying your first home or moving home?

- I compare, advise and arrange mortgages from the entire market
- I personally manage the entire process to ensure it is smooth
- **100% free** - I never charge a fee for my mortgage services
  - Access to highly competitive **life insurance** policies
- I am also a qualified **Will Writer** so contact me to have your Will written

## Call me now to find out how I can help

YOUR HOME MAY BE REPOSSESSED IF YOU DO NOT KEEP UP REPAYMENTS ON YOUR MORTGAGE

01299 549 820 | [Stephanie@midasfp.com](mailto:Stephanie@midasfp.com) | [www.midasfp.co.uk](http://www.midasfp.co.uk)  
Midas Financial Planning Services Ltd is authorised and regulated by the Financial Conduct Authority



**I'm Stephanie**

**01299  
549 820**



## More Clarion Smalls

### GUTTER CLEANING SERVICE

No ladders or scaffolding needed.  
Can reach any awkward place.

All residential and commercial

Competitive rates

Call Ian on 07870384096

### PAUL LYNCH PLASTERING SERVICES

Recently relocated. Offering all aspects of plastering including making and repairing mouldings, cornices, etc. Fully insured, references available.

**07890 049 592**

or

**01299 272931**

### *HIS & HERS*

#### *Dog Grooming Parlour*

*All breeds and  
Cross breeds professionally  
Trimmed and Groomed*



**J. A. Guest**

**Tel: 07790 796 027**

### Washing Machine

### Repairs and Sales

**JULIAN BREAKWELL**

**Telephone 07791 633 746**

**Repairs to all makes, including  
Bosch, Hoover, Zanussi and  
Hotpoint**

**NO CALL OUT CHARGE  
FIXED LABOUR COST**

### Ever After

- Breakfast club
- After school club
- Holiday club
- "Forest schools" outings
- 15hrs education funding
- 24U funding
- Age ranges: 3 months to 11 years



**Day Nursery**  
Cleobury Mortimer

Please contact us on 01299 272 777  
Or Call in to see us anytime.

Friendly, Caring Environment for the Community

**Hi everyone, don't forget that we  
are still collecting soft toys and  
teddies to be sent to the less  
fortunate.**

**So drop them off in Market Hall  
please.**

**Many thanks for your help.**

[Collections4charities.com](http://Collections4charities.com) 07976307889

### *Piano tutor*

*Francis Engleheart*

*All ages — I specialise in teaching adults  
without previous experience*

*I come to you*

**07710 288526 • [fengleheart@hotmail.com](mailto:fengleheart@hotmail.com)**

**S. L. CARTER**

**PROFESSIONAL PAINTER AND  
DECORATOR**

**PLASTERING, TILING, COVING AND  
GLAZING**

**CLEOBURY MORTIMER**

**TEL: 01299 272868**

**MOBILE: 07815 483 029**



The outgoing head of the Royal Shakespeare Company has said that the days of able bodied actors playing roles like Richard III are over. This raises several questions. Seems to me that this removes one of the main challenges facing actors, as isn't the whole idea to pretend to be someone different? The clue is in the name and many great performers have relished the challenge of playing a completely different persona. The RSC approach also raises questions about the type of disability concerned. Will it mean that only someone suffering from scoliosis could play the much maligned monarch? Would someone with a different condition be ineligible due to it being the 'wrong' type of disability? Best to select the most suitable person for the role based on ability rather than disability, but that would never work... Another topical issue concerns actors playing characters of a different race. It would appear that whilst a white actor playing a person of colour is an evil example of 'white privilege', the opposite is a bold and courageous action. The recent black casting of 'Macbeth' comes to mind as a well received production although I doubt there were many black 16<sup>th</sup> Century Scottish aristocrats. No reason why this should not happen but there should be a level playing field.

If you think that the above is confusing, spare a thought for trainee midwives in Edinburgh. Their modules include one that tells them that trans men can give birth even if they have a surgically constructed penis (good luck with that boys!) despite it not being possible for someone born a man to get pregnant or give birth. They are also instructed to describe the patient as a birthing person as well as giving instruction on how to fit a catheter to someone with male genitalia. Apparently this approach is to ensure that the system is inclusive to all....However, a professor of obstetrics commented that 'The writers seem to have left school remarkably ignorant about basic biology, sex and anatomy'. Still, why let the

facts get in the way of inclusiveness?.

Ambulance response times are a serious concern for those with life threatening symptoms although hard pressed ambulance crews are doing their best, they can't respond to calls if they are waiting in a queue outside A&E. The husband of one NHS Chief Executive used his initiative when she showed symptoms of a stroke. Aware that she had been 'lamenting' delays in responses, he bundled her into the car and drove to A&E. Happily, she is recovering but not everyone has that kind of support...

The 'Wagatha Christie' saga rumbles on but I must say that I am less than impressed by the antics of two spoilt women, only famous because of the men they married, having a spat about the alleged leaking of stories on social media. This is while people in Ukraine are being bombed, incinerated, murdered and raped and the £1.3 million (and rising) costs of this saga incurred so far could have done much good. Just put the handbags away girls and grow up. It's also a sad reflection on the shallow and 'celebrity' fixated society we have become.

Another victim of Stonewall's fixation with trans rights, a lesbian barrister who was disciplined for supporting the rights of biological women after her employers were bullied into action by that group is pursuing a case for discrimination. The Stonewall 'Head of Trans Inclusion' (age 34, Salary £ lots) who had applied pressure for her dismissal demanded that his appearance as a witness at the Tribunal be supported by his mother, support worker and support dog... Even one of Stonewall's original founders, Simon Fanshawe, has said that this fixation with trans rights has ruined all the good work that has been done in the past. There are now rumours that there may have been an attempt to intimidate one of the tribunal members. Seems they can dish out criticism but can they take it if they are proved wrong? mm

*Ariadne J*

## NEWSPAPER DELIVERIES



Monday- Saturday

Covers Cleobury Mortimer and Clee Hill

Contact Laura Callwood on 07495 708404

or lauracallwood@outlook.com

## WILMAS CLEANING & IRONING SERVICES

Experienced cleaner, very trustworthy and reliable. If you would like your ironing done you can drop to my house. I am available weekdays, and weekend's times/days flexible. References are available upon request.



Please contact me for further details on

**07891416477**  
**01299 272 941**



Number Nineteen  
**No.19**  
Dental Laboratory

## Denture Repairs

### SPEEDY, QUALITY DENTURE REPAIRS

Cracked/broken dentures repaired the same day.

A 1 HOUR service is available for when time is of the essence, just call to make an appointment.

19 Lower Street, Cleobury Mortimer, DY14 8AL

Email: [nevilleweaver@googlemail.com](mailto:nevilleweaver@googlemail.com)

Phone: 07973856733

All work undertaken by a GDC registered technician



**A.B. Plastering**  
Plus Traditional Lime Plastering

**Adrian Booton**  
PLASTERER

4 Severne Green, Bayton  
Nr Kidderminster, DY14 9LL

Tel: 01299 832 838  
Mobile: 07974 582 524



## TOTAL PROPERTY MAINTENANCE

Fireplaces built for multi-fuel burning stoves,  
Plastering, Building & General Maintenance

**Rob Taylor**

Mobile: 07944 074540

Landline: 01299 832734

Email: [rptbuilding@hotmail.co.uk](mailto:rptbuilding@hotmail.co.uk)

## E.PURSLOW & SON LTD

Stone, Gravel, Cement Supplies

Approved Coal Merchant

Calor Gas Stockists

Tarmacadam Specialists

Car Parks and Driveways

Constructed.

**TEL: 01299 270314**

David Ward  
**firewood**



Do you need a dependable consistent quality supply of seasoned or kiln dried hardwood and softwood firewood?

Cut and split to suit and delivered in breathable 1.2-cubic metre bags, so no need to restack.

Small delivery vehicle, fitted with crane, can deliver to most locations and situations.

CALL DAVID TO DISCUSS YOUR REQUIREMENTS:

Mobile: 07866 441154

## Alan Smith Aerials

*Digital TV Installations.*

**Freeview** aerials fitted and distributed around the house.

**Freesat** box, dish, and cable supplied and fitted. One off payment, **No contract or subscription required.**

Extra points, Repairs, New fits, Set ups, Multi room.

All work is carried out by a **Local**, fully qualified and insured installer.

**01299 270007 or 07970 675728**

## THE SOCIAL CALENDAR

Date	Time	Details	Contact	Telephone
Wed 1 <sup>st</sup>	2.30	Cleobury WI take tea at the Larch Barn		
Thurs 2 <sup>nd</sup>		GREEN GARDEN WASTE WHEELIE BINS EMPTIED TODAY		
Thurs 2 <sup>nd</sup> – Sun 5 <sup>th</sup>		Exhibition of Clee Hill history at St Johns, Doddington. PAGE 51		
Sat 4 <sup>th</sup>	7.30	Flicks in the Sticks offers “Official Secrets” plus food in the interval. PAGE 9		
Sun 5 <sup>th</sup>	10.00	CMFA invites all country lovers to share the Dinmore Dally Walk. PAGE 20		
	1.00	Street Party in Hopton wafers centre, or the Village Hall if its wet PAGE 13		
	1.00	Street Party in Clee Hill village		
Thurs 9 <sup>th</sup>		BLACK & PURPLE WHEELIN BINS EMPTIED TODAY		
Mon 13 <sup>th</sup>	6.30	Creative Writing Group meet at the library. PAGE 7		
Sun 12 <sup>th</sup>	11.00	Open Garden Day at Upper Marshes, Catherton. PAGE 13		
Tues 14 <sup>th</sup>	7.30am	The Breakfast Club meet at the Golf Club. PAGE 11		
	7.30	Cleobury WI meet to hear ex treasurer Liz Smurthwaite. PAGE 19		
Thurs 16 <sup>th</sup>		GREEN GARDEN WASTE WHEELIE BINS EMPTIED TODAY		
Fri 17 <sup>th</sup>	7.30	The Wine Walk wends its friendly way through the town. PAGE 5		
Sat 18 <sup>th</sup>	9.30- 12.30	Cleobury Country Farmers Market, in and around St Marys Church! All your favourite traders offering a great range!		
	7.00	Concert for Ukraine, Kidderminster Town Hall. PAGE 13		
Mon 20 <sup>th</sup>	7.30	The Reading Group meet to discuss their recent reading. PAGE 19		
Wed 22 <sup>nd</sup>	8.00	Clows Top Garden Club meet at Victory Hall PAGE 7		
Thurs 23 <sup>rd</sup>		BLACK & PURPLE WHEELIE BINS EMPTIED TODAY		
Sat 25 <sup>th</sup>	3.00	Platinum Jubilee Cream Tea at Melville Methodist Church. PAGE 13		
Sun 26 <sup>th</sup>	12.00	Cleobury Mortimer Garden Trail offers ten special places to visit. PAGE 37		
Mon 27 <sup>th</sup>	7.30	Nearly Dead Poets Society meet at the library. Good rhymes, great laughter.		
Tues 28 <sup>th</sup>	9.30	Clows Top Garden Club gather for a visit to Auldenfarm Hereford. PAGE 7		
Thurs 30 <sup>th</sup>		GREEN GARDEN WASTE WHEELIE BINS EMPTIED TODAY		
		AND LOOKING FORWARD TO JULY.....		
Sat 2 <sup>nd</sup>	11.00	The Men’s Shed will be officially opened by the High Sheriff. PAGE 55		
Sun 3 <sup>rd</sup>	9.30ish	The Cleobury 10km Race starts from the Sports & Social Club. PAGE 9		
	12.00	Open Garden at Upper Marshes, Catheron Common. Lovely place! PAGE 37		
		AND A REMINDER ABOUT THOSE REGULAR EVENTS.....		
	8.00	Every Monday except Bank Holidays, Bingo in the Market Hall		
Thurs	7.00	Lessons in the Birth Dance for expectant mums, in the Market Hall. PAGE 9		
Thurs	10.00	Drop in at St Marys Church to chat and maybe share a trouble. PAGE 39		

### SAVE OUR CURLEWS

Our joint project with the Shropshire Ornithological Society, to find and protect as many Curlew nests as we can, is progressing well. Three nests have been found and fenced so far, two of them on the Common. If the eggs hatch, we will radio tag and track the chicks to see how they use the landscape.

There are several other pairs in the area, and it’s not too late to find them. Please help.

If you see or hear a Curlew, Lapwing, Kestrel or Cuckoo, or evidence of breeding Red Kite, please tell us. Contact Chris Bargman (01299 270514, email: [chcwgs@shropscwgs.org.uk](mailto:chcwgs@shropscwgs.org.uk))

### THE GIN WALK

Shaunah Murrell would like to thank everyone who supported the Gin Walk - all 82 of them! Any rumours of Cleobury Mortimer becoming a teetotal town should obviously be ignored.

The four quality gins taken in on the tour obviously went down well and the evening raised a total of more than £2,300 for the work of Severn Hospice. There was a raffle as well, and results of that should be in the July issue.

It was no easy ride getting this particular Walk started, with covid and other handicaps getting in the way, but at this rate it should be an annual feature in future.



# Lower St Garage

7 Lower St, Cleobury Mortimer. DY14 8AA



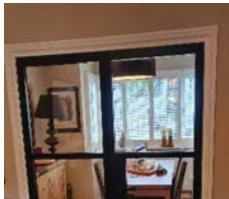
- M.O.Ts on cars, motor bikes & small commercial vehicles
- Tyres, Tyre fitting,
- Puncture repair and Tracking.
- Diagnostics, Air conditioning
- Welding.
- Service and Repairs to most vehicles.
- Delivery and Collection Service Available

**Contact The Team at Lower St Garage on: 01299 270208**

## WANTED

**FUN CHARACTERS FOR AN  
OLD TIME MUSIC HALL**

**IF YOU LIKE TO PUT A SMILE ON SOMEONES FACE  
MAKE THEM LAUGH TILL THEY CRY  
THEN CONTACT TINA ON 01299 272 882  
PROCEEDS TO CHARITY**



Family run business of 30 years, call us for a free no obligation quote

**Finance available, buy now and pay later**

5 Lupin Works, Worcester Road, Kidderminster DY10 1JR  
Phone: 01562 822855 – Email: [sales@twshq.com](mailto:sales@twshq.com)



**Tele:- 01299-272757** *Hands on Printing* **Email:- clickclick2@hotmail.co.uk**  
**Mobile 07708 587787**

All digital media printed to 6"x4" 5"x7" 8x6" 10"x8"  
 CANVAS WRAPS FROM 12"x16" - 30"x20"  
 ENLARGEMENTS FROM 12X10" TO 24X36"  
 FROM PHOTO'S, DIGITAL MEDIA & 35mm SLIDES

**PASSPORT PHOTO'S ONLY £5-00**  
**WHILE YOU WAIT**

**MOST VIDEO FORMATS TRANSFERRED TO D.V.D.**  
 USB or SD cards

INCLUDING VHS - VHSC - SONY 8 - DIGITAL 8 - Hi8 - MINI DV & BETAMAX  
 REEL TO REEL & CASSETTE  
**AUDIO TAPES & OLD LPs TO CD**

**PHOTO & VIDEO FILES TRANSFERRED FROM MOBILE TO DVD ETC.**

**STANDARD 8 - SUPER 8 FILMS TRANSFERRED TO D.V.D.**  
 USB or SD cards  
 DAMAGED PHOTOGRAPHS RESTORED ETC.

**BIRTHDAY AND CELEBRATION BANNERS**

**Look Who's 50 Today!**

**Video Filming Service**

**VINYL BANNERS - BUSINESS CARDS - SHORT RUN FLYERS INVITATIONS - ORDERS OF SERVICE**

**B-W OR COLOUR PHOTOCOPIES SELECTION OF PHOTO FRAMES**

**Traditional Studio Portraits and Pet Photo's**

43, High St.  
 Cleobury Mortimer.  
 DY14 8DQ

 **LACON CHILDE SCHOOL**   
 the future begins here  
 Headteacher: Darren Reynolds



Lacon Childe School, Love Lane, Cleobury Mortimer, DY14 8PE Tel. 01299 270312 email - admin@lacon-childe.org.uk

**LUDLOW SALVAGE**  
 ~ Est 2017 ~

Reclaimed Building Materials  
 and Architectural Antiques

Station yard, Station road,  
 Woofferton, Ludlow SY8 4AW

**T 07805 312168**  
**@ ludlowsalvage@gmail.com**  
**f /ludlowsalvage**  
**@ /ludlowsalvage**

**WWW.LUDLOWSALVAGE.CO.UK**

**Boomerang**  
 of Cleobury Mortimer  
 private hire travel

- Friendly, reliable service
- Local & long distances
- Fully council licensed (up to 12 passengers)
- Airport transfers
- Courier service
- All occasions catered for

Tel: 01299 271257, Mob: 07411 142755, Email: stuart.boomerang@yahoo.co.uk

---

# Cleobury Mortimer Golf Club

At Cleobury Mortimer Golf Club we believe that a really enjoyable golf day takes more than just a great golf course. We make sure that your whole experience, from the friendly welcome in the golf shop to your drinks and meal in our relaxed clubhouse, is all part of a day you'll remember.



## Everyone Welcome

Membership available.

Just some of the many benefits of joining Cleobury Mortimer Golf Club

- Access to full length 27- hole golf course
- Opportunity to achieve and maintain a handicap
- Family, Friendly Environment
- Playing opportunities at all times of the week
- A range of competitive opportunities
- Open dawn to dusk 363 days a year.

*We look forward to meeting you at Shropshire's friendliest golf club.*



- ☎ 01299 271 112 (ext 1)
- ✉ [pro@cleoburygolfclub.com](mailto:pro@cleoburygolfclub.com)
- 🌐 [www.cleoburygolfclub.com](http://www.cleoburygolfclub.com)



### DODDINGTON NEWS

We had a joyful day on May 1st as we officially opened the church path. Dancing, bunting, wildflower posies, wheelchairs, walking-frames, and of course cakes. We won't thank the rain for staying away because it didn't and our wildflower turf alongside the path was in need of it - silver linings! Our path means so much more than the physical access - it brings hope for the future. Thank you to all who made this possible. And now for something we can only do because we have the path.

#### Local Stories Uncovered, a community exhibition for the Jubilee:

Everyone enjoys a bit of nostalgia, and we will be indulging in that over the Platinum Jubilee weekend. From Thursday 2<sup>nd</sup> to Sunday 5<sup>th</sup> June an exhibition will look back at the last 70 years in this community on Titterstone Clee Hill. Local residents have been talking about their memories, and these new recordings will be played throughout the day, while photographs, newspaper cuttings, mementos, and written memories will be displayed. The Parish Council is helping to fund the exhibition which has members of the community contributing

material as well as helping set it up at St John's Church. Local people, from those who have lived here for generations to more recent residents, have all contributed to this history of the community, and visitors who drop in throughout the long weekend will be invited to add their own memories. Open daily from 10am to 5pm and refreshments from Keysells farm along with home made cakes and cuppas will be available all day. The new path to the church allows access to all as well as the great views, and parking is available at the Village Hall.

*Celia Gibb*

### SHROPSHIRE UNITARY COUNCIL

#### Councillors Gwilym Butler and Simon Harris report:

1. The Council continues to support the Homes for Ukraine programme and has established a 'one stop shop' web page : [Homes for Ukraine | Shropshire Council](#) . 136 'hosts' have volunteered and the refugees have started to arrive. The Council is working its way through the property and DBS checks. A refugees hub has been established in Shrewsbury.

2. Cllr Tremellen has resigned in our neighbouring Division of

Highley and both of us have offered our assistance to his constituents and Highley Parish council until his replacement is elected.

3. The Council Tax rebate programme (£150-) had been rolled out with approx. £10m being rebated across 65,000 households.

4. A dedicated fly tipping response team took to the roads on April 1st as Shropshire Council looks to clamp down on unsightly and illegally dumped waste. The team will be out and about five days a week in a new response vehicle, following up reports of fly tipping on public land, and looking for cases that have yet to be reported. They will clear fly tips – or arrange for them to be cleared – and will look for, and record evidence, that will enable the offenders to be identified and prosecuted.

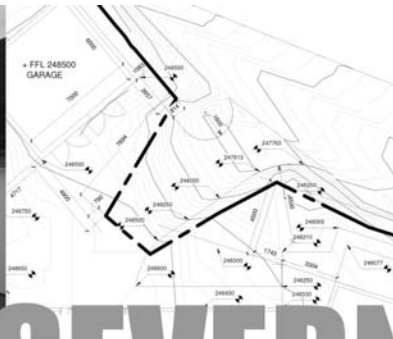
I can also advise that I attended a meeting today which confirmed that the A4117 from Vaughan road through High street , Church street, Lower Street and Station road is in the capital programme to be repaired and resurfaced and will be hopefully done in October along with surface dressing of the road to the Worcestershire border. GB



## Stove Installations, Service and Repair

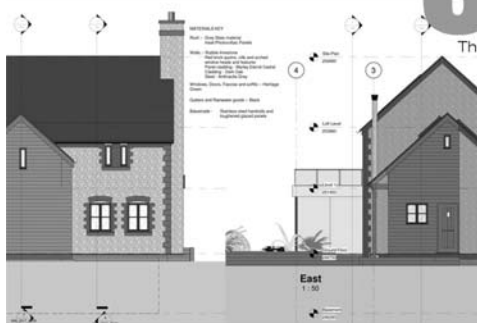
- All solid fuel wood burners and boilers supplied and installed
- Chimneys relined and twin wall systems built
- Chimney Pots, Cows, Carbon Monoxide alarms and Air Bricks fitted
- All Stoves and Fires serviced including chimney sweep
- Hetas Landlord Safety Certificates

Tel: 01299 272712 Mbl: 07807 343006  
email: [info@rweaversservices.co.uk](mailto:info@rweaversservices.co.uk)

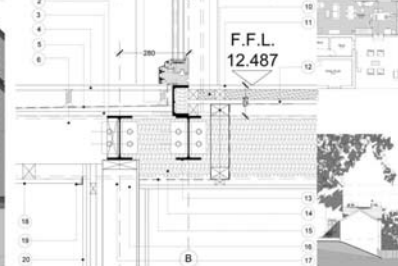


# SEVERN

architects



The Guard House, Cleobury Mortimer, DY14 9BD



We are a friendly Shropshire based architectural practice with plenty of experience in all kinds of residential projects large and small. Using the latest 3D software package and technology we can turn your virtual dream home into a reality.

Contact us now on 07825 759484 or email  
julie@severnarchitects.co.uk  
for your consultation

Our Architectural Design Services include

- Design & Feasibility Studies
- General project Advice
- 3D Modelling
- 2D CAD Drawing
- Planning Advice and Submissions
- Building Regulation Applications
- Tender & Construction Drawings
- Contract & Project Management

RIBA 

Chartered Practice

# KIDDERMINSTER

## SELF STORAGE AND REMOVALS



### STORAGE

Free insurance . Flexible Terms  
Fixed Price Guarantee . No hidden costs

### REMOVALS

Professional Removal Service  
Est. over 25 years

### PACKAGING MATERIALS

Boxes, Bubblewrap, Tape Etc. for sale  
Free local deliveries on orders over £20

**01562 744088**

[www.kidderminsterselfstorage.co.uk](http://www.kidderminsterselfstorage.co.uk)

Unit 11 Finepoint Way, Stourport Road, Kidderminster DY11 7FB

[info@kidderminsterselfstorage.co.uk](mailto:info@kidderminsterselfstorage.co.uk)



## **CLEOBURY COMMUNITY HUB**

### **Coffee Shop, Climb61, Youth Events**

Mondays - 9:30am - 8pm

Tuesdays - 9:30am - 9pm

Fridays - 9:30am - 5:30pm

What an amazing month May has been. The CCH continues to be the Hub of the community it was intended for, as we have had more young people through the door for both 'Hub Youth' and climbing at Climb61. It has also seen a growth in our regular coffee shop attendance and Ladies Night @ Climb61.

Thank you to our volunteers who have stepped up for all our activities as holidays and sickness have dominated this past month.

#### **FOCUS ON: Hub Youth**

*In a time when youth are constantly under the spotlight, for various reasons, we wanted to highlight the amazing young people that we see on a regular basis from our community. An average of 24 young people attend Hub Youth each week from 7pm-9pm where we play different games, boulder and hang out. We have a range of young people attending and we love how everyone from the introvert to the extravert, from the sporty to the board game lovers and everyone in between has a place and quickly feel comfortable at the CCH. We want young people to become the best version of themselves and we firmly believe that is through building positive relationships where individuals are able to express themselves in a safe space. We offer that and hope to continue to develop those positive relationships for a very long time!*

*Don't forget our regular activities:*

*Mondays - Coffee Shop, Rock Tots, Soft Play, Kids Climbing Club, Youth Climbing Club, Climb61 Bouldering.*

*Tuesdays - Coffee Shop, Climb61 Bouldering, Soft Play*

*Wednesdays - Hub Youth - Wed 11th first one of May (alternate weeks)*

*Thursdays - Hub Youth - Thurs 5th first one of May (alternate weeks) Ladies Night (9th June)*

*Fridays - Coffee Shop, Climb61 Bouldering, Soft Play*

### **Climb61 June Session Times - To book: [www.smyg.org.uk](http://www.smyg.org.uk)**

**Mondays** 1:15pm-2:45pm

**Tuesdays** - 9:30am-11am, 11:15am-12:45pm, 2:15pm-3:45pm, 4pm-5:30pm,  
5:45pm-7:15pm, 7:30pm-9pm

**Fridays** - 9:30am-11am, 11:15am-12:45pm, 2:15pm-3:45pm, 4pm-5:30pm



@cleoburycommunityhub

@saintmarysyouthproject @cleoburycommunityhub



# ONE STOP ROOFING

## The Flat Roof Specialists



- Rubber, Fibreglass & Felt
- Re-pointing & Chimney Repairs
- Fascias & Guttering



**Take advantage of our offer:** Replace your flat roof Making EPDM (rubber) your choice for a long lasting, weatherproof & high slip resistant membrane, with a lifespan of 50 years, **get it for the same price as felt**, which only carries a 10 year guarantee!

Replace your flat roof with EPDM (rubber) & add a skylight or lantern, giving extra light to your room starting **from as little as £400!!**

**Freephone 0800 0855277 \* 07538 471274**

**Www.onestop-roofing.co.uk**

**onestoproofinguk@gmail.com**

Family business est. 35 years.  
All repair work undertaken

Proud members of  
**Checkatrade.com**  
Where reputation matters

## CLEOBURY SEAFOOD & FREEZER CENTRE

6 Newhouse Farm - Tenbury Road - Cleobury Mortimer

**01299 271345**

### Ready Meals

*We stock a wide range of ready meals, from the ordinary to the extra ordinary !  
Plus a range of Vegetarian, Gluten Free and Vegan meals.*

### Mr Dave's

*Meat, Chicken, Prawn and Vegetarian Balti, Madras Curry  
Mr Dave's extra large naan, plain and garlic & coriander.*

### Fish

*Cod, Haddock, Plaice fillets, Sea bass, Lemon sole, Cod Loins, Smoked Haddock.  
Battered & breaded fish fillets. Young's Jumbo Cod Fish Fingers. (Very Popular)*

### Seafood

*Raw king Prawns, Squid, , whitebait, cooked tiger prawns, scallops, seafood cocktail.  
Hot & Spicy Prawns, Breaded Cod & Plaice Goujons*

**New Fish Cakes** *Thai Style Cod & Prawn, Smoked Haddock, Mozzarella & Spring Onion,  
Sea Bass, Cod, Lime & Ginger.*

### Fruit and Vegetables

### Potato Products

*Bannister Jacket Potatoes, Oven chips, Sweet Potato Fries Twister Fries, Hash Browns, Spicy Wedges*

### Chicken Products

*Southern Fried Breaded Chicken Steaks, Breaded Chicken Goujons, Chicken Nuggets, Chicken Bites.*

### Gateaux for all occasions

### BENNETTS ICE CREAM

**Opening Times** 9am to 4.30pm Mon to Friday. Saturday 9am to 12

Visit our web site [www.cleoburyfreezercentre.co.uk](http://www.cleoburyfreezercentre.co.uk)

**Cleobury Clarion June 2022**

**Page 54**



"We tried artificial flies. We tried lures.  
We tried live bait. Nothing works ...  
It's like they're psychic!"



"Blood-curdling screams. Hayes, will  
do nothing to help us catch a fish."



We are delighted to announce, that at 11 am on Saturday July 2nd our Men's Shed will be officially opened by Selina Graham, High Sheriff of Shropshire, and Rev'd Ashley Buck.

The shed is opposite the Cleobury Freezer Centre, New House Farm Industrial Estate, Tenbury Road. Tea, coffee and cake will be available afterwards at the shed and everyone is welcome to drop in, find out more, and have a look round.

You can become a member and benefit from using the facilities or you may prefer to

join and link in with the social side of the shed or become a friend of the shed and support it financially. It's a place where we can make stuff, help others, learn skills, and make new friendships.

For more information about the mens shed contact: [cmms.membership@gmail.com](mailto:cmms.membership@gmail.com) or 07776 243584

*Peter Blackburn*

### **IN PRAISE OF...**

Twelve members of Stottesdon W.I. gathered to learn and perform a traditional English folk song under the tutelage of Angela Kazimierczuk.

Angela led us through warm up exercises, stressing the importance of posture, holding the head level, thus projecting the voice when standing or seated. We hummed note sequences, shaped mouths to

'la', then worked our way through the phrases of 'The Nightingale'. Our attention was drawn to annunciation of vowels and diphthongs, and we were all then able to cope melodically with words and breathing intervals, producing a rather lovely effect when singing the verses.

Angela's engaging approach gave confidence to less able singers to join in beside those with greater expertise. Sessions like this are great fun, but also a help to those of us with less musical experience to gain some appreciation of the elements of performance.

'Quilling' is the activity for our next meeting on June 15th at Chorley Village Hall. Visitors are welcome, as always.

*Marian Wootton*

## **KINLET C OF E PRIMARY SCHOOL**

**Love to Learn – Learn to Love**



- Outdoor play areas
- Small family atmosphere
- Kind – Inspire – Nurturing – Learning – Eco-friendly -Teamwork

[www.kinlet.shropshire.sch.uk](http://www.kinlet.shropshire.sch.uk)

[admin@kinlet.shropshire.sch.uk](mailto:admin@kinlet.shropshire.sch.uk)

Telephone: 01299 841210

# Booton Brothers



## Construction

Rich: 07445298747

Mike: 07853225401

bootonbrothers@outlook.com

All building work undertaken

## Elite Sweeps

Professional Chimney Sweep

& HETAS Stove Installer

- ✓ Prompt, reliable & friendly service.
- ✓ Cowls and Chimney Pots fitted.
- ✓ Fully qualified and fully insured.
- ✓ Guild certificates issued after every sweep.
- ✓ HETAS Approved Installer.



Call Eddie Tel. 01299 382222 / 07895 612915

[www.elitesweeps.co.uk](http://www.elitesweeps.co.uk)



# I.P.T. GROUND SOLUTIONS

*Over 30 years experience*

For all pipe installations:

- Sewage • Storm drainage
- Blockage/Repairs • Ditches
- Grass Cutting / Hedge Trimming
- Driveways • Ground clearance

*For all your ground needs*

*Contact Ian on:*

T: 07870 384 096

E: [ian.ptaylor@yahoo.com](mailto:ian.ptaylor@yahoo.com)

W: [iptgroundsolutions.co.uk](http://iptgroundsolutions.co.uk)

BOOK YOUR  
MOT WITH US



# LEWIS MOTORS KINLET

01299 841 391



### SERVICING & REPAIRS TO ALL MAKES & MODELS

- Clutches & Cambelts
- Exhausts, Batteries & Tyres
- Wheel Alignment
- Diagnostics
- Recovery
- Welding

Follow us on Facebook: [LewisMotorsKinlet](https://www.facebook.com/LewisMotorsKinlet)

Cleobury Clarion June 2022

Page 56



Welcome to June edition of my series of Beating the Scammers. We know summer is here as the rain is warmer! Also, the days are longer which means that the door-to-door scammers are more active. I've written about them before, so please stay alert and remember that if someone calls at your door unexpectedly, don't be taken in by the offer of cheap goods, politely decline and close the door. If you have a door chain, you should always use it before opening the door. If you feel unsafe or uneasy about anyone at your door, close it and call the Police on 101. Of course, if you feel more threatened call 999. There has been local comment about the lack of Policing in Cleobury, but this is being addressed and we are seeing improvements.

Your Neighbourhood Watch Team will have a stall at the Cleobury Festival in QEII Park on June 4<sup>th</sup>. Please feel free to drop by if you can and we would love to chat with you. We will also be announcing a safe Neighbourhood Project named the Calling Tree which we hope will add an easy layer of communication about anything of concern around your neighbourhood. The simple process involves you having three people you can quickly call or text, if you see or hear anything suspicious or of concern. Those three will also have three different people they can pass the message on to who will also have their own three. In a few minutes with just this small group already 39 people have the same information. With more people involved the numbers reached can potentially cover the whole area in minutes. That's the best way to frustrate anyone who is intent on being a risk in our community. All you need is a landline or a mobile phone and many calling plans with BT or the mobile phone providers give free calls allowances every month.

I now want to shift to computer crime, particularly a crime that is becoming more prevalent across the whole country and beyond. The Financial Conduct Authority (FCA) is warning us to beware of people posing as investment advisers and offering to help them set up new schemes via online meeting platforms. They ask their victim to share the screen and enable remote access - which hands over control of their device and, potentially their bank account. About 2,100 cases have been

reported to the FCA since July 2020. More than £25m was stolen in the 15 months from January 2021. The FCA said the number of screen-sharing scams it had seen had risen 86% to 683 in the six months from July to December 2021 compared with 367 for the same period the year before. Remote access software is a legitimate tool for services like IT support to troubleshoot problems without being in the room. But scammers are increasingly hijacking this familiarity to lure victims into granting access to more than just a picture of their screen. They are then persuaded to grant the fraudsters control of their computer, by downloading remote access software, giving them direct access to even online bank accounts. It also means they can install their own software giving them full access at any time. The criminals do this under the guise of being helpful - eg. offering to set up a new investment scheme and monitor it. One scam victim, who wished to remain anonymous, says she lost thousands of pounds to scammers after trying to find new investments to grow her savings. She was called by a seemingly legitimate investment company in spring 2021 and told she could see a sizeable return on an initial £250 investment by downloading remote access software and letting the firm do the rest. *"They didn't say [the software] was anything other than an investment tool, and so I had no idea what it would actually do,"* she said. Over the following six months, the woman was encouraged to make more investments - saying graphs and information from scammers saw her "blinded by science", and led her to believe her investments were paying off. But by that time, the scammers had drained her pension fund by £48,000 and taken out a further £40,000 of loans in her name. *"I didn't know what was happening until it was all gone,"* she says. If scammers gain control of your computer, it gives them "access to your sensitive banking and investment information, the freedom to browse at their leisure, and the ability to take whatever details they want" If you think your computer has been **"taken over"** disconnect it from the network and call a reputable business to help you.

Nigel Reid



# EVERYTHING INTERIOR UPHOLSTERY

## REUPHOLSTERY SERVICES:

- AUTOMOTIVE
- CARAVANS
- CAMPER VANS
- TRADITIONAL & MODERN
- COMMERCIAL & BESPOKE
- DOMESTIC
- CARPET & UPHOLSTERY CLEANING  
*(in partnership with WE GLEAM)*

**OVER 30 YEARS EXPERIENCE**



## CONTACT US TODAY

Unit 19 Old Station Business Park, Cleobury Mortimer, DY14 8SY

07961 712683 / 07961 792103

[www.everythinginterior.co.uk](http://www.everythinginterior.co.uk)

email: [everythinginterior@outlook.com](mailto:everythinginterior@outlook.com)



## Professional Family Estate Planners



- Wills or Lasting Powers of Attorney from £95
- Free Will reviews
- Probate support
- Care home fee avoidance
- Free funeral plan with every Will
- Family Protection Trusts

"A lifetime's attention to complex legal issues as a retired Detective Superintendent and now a Private Client Lawyer means **you can definitely trust Mark and his daughter Lauren** to write your Will"

**T:** 01299 251442

**E:** [info@ambalegalservices.co.uk](mailto:info@ambalegalservices.co.uk)

**W:** [ambalegalservices.co.uk](http://ambalegalservices.co.uk)



Institute of  
Professional  
Willwriters

• MEMBER •



- Appointments by telephone, video link or in the comfort of your own home
- Over 45 years' experience in law
- Friendly and professional support for you and your family
- Call us up to see how we can help!



## ARE YOU LOOKING FOR Independent Financial Advice?

Consequential Planning are your local independent financial advisers. We have a highly qualified team with extensive experience in all aspects of financial planning. We can offer help and advice on investments, pensions, protection and mortgages.

Telephone 01299 407128

to arrange a free financial review or visit:

[www.cnsq.co.uk](http://www.cnsq.co.uk)



**Consequential**  
PLANNING LTD





# Burning Blocks

www.burningblocks.co.uk



A safe and easy to use alternative for logs for both wood stoves and open fires

Discount for local  
delivery quote:  
"family10" at the  
checkout

- Easy to light / roaring fire in under 5 mins
- Easy to stack / 10kg packs
- High heat / similar to coal on output
- Each briquette lasts over an hour
- Low moisture / 8% moisture maximum
- Store undercover

UK wide  
delivery available,  
approx. 2 days

buy online at [www.burningblocks.co.uk](http://www.burningblocks.co.uk)

For more information:-

Email: [burningblocks@gmail.com](mailto:burningblocks@gmail.com) Website: [www.burningblocks.co.uk](http://www.burningblocks.co.uk) FB: <https://www.facebook.com/burningblocksbriquettes>



## Richard Haines

### The Worcestershire Chimney Sweep

- ♦ Traditional & Power Sweeping Services
- ♦ Certified Chimney Sweep
- ♦ Insurance Recognised certificate issued



M: 07752 116629 T: 01584 781358 E: [lostcity5@hotmail.co.uk](mailto:lostcity5@hotmail.co.uk)

[www.theworcestershirechimneysweep.co.uk](http://www.theworcestershirechimneysweep.co.uk)



# LUDLOW FIREWOOD

~ Est 2019 ~

Suppliers of Premium Grade Ready  
to Burn Firewood, Beautifully Crated  
and Delivered to Your Door



**T** 07949 318014

**@** [ludlowfirewood@gmail.com](mailto:ludlowfirewood@gmail.com)

**ig** /ludlowfirewood

**f** /ludlowfirewood

Station yard, Station road, Woofferton, Ludlow SY8 4AW

**WWW.LUDLOWFIREWOOD.COM**

Available in Barrow bags and  
nets for all your access  
requirements.



---

## **COUNCILLOR VACANCY**

Would you like to represent your community at local government level?

We have one Town Councillor vacancy. Applications are now being sought from any suitably qualified person who wishes to stand for co-option onto the Council.

If you have:

- a good knowledge of the local community?
- good communication skills?
- the ability and willingness to work with other organisations such as Shropshire Council highways, West Mercia Police, Housing Associations to help deliver services and improve quality of life in the parish?
- a willingness to attend training and represent the Town Council at external meetings?
- a willingness to meet with residents to discuss issues?
- the ability to attend monthly Town Council meetings?
- skills or expertise which will assist the Town Council in its various functions
- basic internet and email skills

then please consider applying for the Town Councillor vacancy.

If you think this may be of interest to you, please contact Mrs Dorothy McBride/Town Council Office on 01299 271154 or email [cleobury.rfo.dorothy.mcbride@gmail.com](mailto:cleobury.rfo.dorothy.mcbride@gmail.com) in the first instance. A formal letter of application should be submitted to Mrs McBride by 12noon Friday 17th June 2022.

Interviews are expected to take place prior to Co-option being considered at the Town Council meeting on Monday 4th July 2022.

### **Cleobury Festival, Saturday June 4th**

#### **OUT ON THE PLAYING FIELD**

**1.30 - 4.00 Learn Circus Skills in Circus Skill Zone**

**3.00 - 4.00 Cleobury Concert Brass**

**1.30 Dog Show Registration**

#### **IN LACON CHILDE SCHOOL**

**12.00 - 4.30 Story Telling on the hour**

**10.30 - 4.30 Arts and Crafts Displays**





Integrated Renewable Solutions

## SHROPSHIRE HEAT PUMPS

EnergyZone are one of Cleobury's best kept secrets. We are one of the largest and longest established renewable engineering companies in the UK installing heat pumps since 2003. 14 in house engineers with over 130 years combined experience completing over 1000 Domestic and Commercial systems all over the UK. Based next to Hobsons Brewery in Cleobury Mortimer we are your local experts in heat pump systems.

Heat pumps are rapidly becoming the standard heating system for all new build properties, as they always have been in many parts of Europe, and the Government is offering a very generous incentive to encourage anybody with an Oil, LPG or Electric boiler to replace this with a heat pump.

**Replacing your boiler with a heat pump has many advantages;**

- Lower running costs for your heating - up to 50% lower
- No dependence on fuel deliveries
- Removal of current boiler under our scrappage scheme
- Up to a 10-year warranty with a 20 to 25-year life expectancy
- Government backed Renewable Heat Incentive (RHI) to help cover installation cost over 7-years (available until March 2022)

### **What can EnergyZone offer?**

Complete design and installation of a heat pump system, including all paperwork required to enable you to claim the maximum Government incentive

Upgrade of your old radiators and hot water cylinder if required

Local support with annual servicing through our EZcare package

With the current Government incentive now is a great time to consider scrapping your old fossil fuel boiler and installing a heat pump that is not only good for the planet but also your pocket.

**Call us for a free home assessment from one of our engineers.**



Fully accredited installers of the brands above ensuring the correct model is selected for your home

# 01299 270011

[www.energyzone.co.uk](http://www.energyzone.co.uk) [sales@energyzone.co.uk](mailto:sales@energyzone.co.uk)





## Community Contacts for Clarion Readers

CEMETERY ADMINISTRATOR	Theresa Ray	07703 965 064	theresa.25016@hotmail.co.uk
CLEOBURY COUNTRY CENTRE		01299 272300	In Love Lane, 9 to 5 Mon to Fri.
CLEOBURY DENTAL PRACTICE		01299 271747	<a href="http://www.cleoburydental.co.uk">www.cleoburydental.co.uk</a>
CLEOBURY CARERS	Michelle	01743 341995	<a href="mailto:carerssupport@shropshire.gov.uk">carerssupport@shropshire.gov.uk</a>
CLEOBURY COMPASSIONATE COMMUNITIES	Katja Jones	07966 080111	Tuesday and Thursday at the Medical Centre
CLEOBURY MORTIMER LIBRARY		01299 272301	Open 9 to 7 Mon, 9 to 5 Tues/Fri and 10 to 1 Sat.
LOCAL POLICE	PC Wayne Strangwood	07773 054 587	<a href="mailto:wayne.strangwood@westmercia.pnn.police.uk">wayne.strangwood@westmercia.pnn.police.uk</a>
CLEOBURY MORTIMER GUIDES	Fiona McCallum	07805 737 555	
CLEOBURY MORTIMER SCOUTS	Lowri Hughes		<a href="mailto:cleoburybeavers@gmail.com">cleoburybeavers@gmail.com</a>
CRIMESTOPPERS		0800 555 111	Free Police contact. Talk in confidence, to report any crime.
DOMESTIC VIOLENCE HELPLINE		0800 783 1359	Women's Aid, 24 Hour support:
HOME FROM HOSPITAL		01584 878046	Help over the first weeks back home from Age UK
MARKET HALL	Kim	01299 272732	<a href="mailto:markethall@cleobury.org.uk">markethall@cleobury.org.uk</a>
MEDICAL CENTRE		01299 270209	Out of surgery hours, use the Shrop Doc Service.
SHROP DOC		111	Service available evenings and weekends
THE MEN'S SHED	Pete Blackburn	07776 243 584	<a href="mailto:petblack@me.com">petblack@me.com</a>
THE PHARMACY		01299 270219	Closes for half day on Saturday. Delivers prescriptions
ST ELIZABETH'S CATHOLIC CHURCH	Angela Flowers	01299 270318	Sunday Mass at 9.00am
NIGHTINGALE NURSING FUND	Rosemary Abbiss	01746 718451	
TOWN COUNCIL	Clerk Matthew Sheehan	01299 271154	Cleobury Country Centre 9 to 2 pm, Mon to Fri. <a href="http://www.cleobury.org.uk">www.cleobury.org.uk</a> . Council meets in the Centre on the first Monday of the month
POST OFFICE		01299 270211	In the Select and Save Grocery Store, Church Street
SAINT MARY'S YOUTH PROJECT	Mark Greaves	07828 116810	<a href="mailto:mark.stmarys@live.co.uk">mark.stmarys@live.co.uk</a>
SHROPSHIRE COUNCIL		0345 678 9000	
SOUTH SHROPSHIRE YOUTH FORUM		01584 874922	
VOLUNTARY CAR SCHEME		01299 666119	Mandy Smith
WASTE DISPOSAL		0345 678 9007	The contractor is Veolia
WATER SUPPLY EMERGENCIES	Severn Trent	0800 783 4444	
NEWLIFE CHURCH	Pastor E Stirrup	01562 630595	Sunday services at 10.30

**Collect the Clarion in Cleobury from:** Select and Save Grocery, Londis Store, Cleoburrs, Cleobury Cafe, The Severn Hospice Shop, Mid Counties Co-op, Purslows, and The Library.

**Out in Cleobury Country at:** Heath Farm Meats, **Bagginswood**; **Clee Hill Stores**; **Clows Top Stores**; The Sun and Slipper, **Mamble**; **Hopton Bank Service Station**; ; **Ludlow Library**; **Mahorall Cider Farm**; The Colliers Cafe & Shop, **Rock**; The Fighting Cocks, **Stottesdon**; The Duck Inn, **Chorley**; The Live and Let Live, **Neen Sollars**; The Eagle and Serpent, **Kinlet**; Parker Motors, **Ditton Priors**.

**Copies are also available from the Parish Churches in:** Cleobury Mortimer, Bayton, Doddington, Hopton Wafers, Milson, Neen Savage and Neen Sollars.

**Missed your Clarion? Cleobury Mortimer Library keeps the current month's copy on file and all back issues are available to read as pdfs from [www.cleoburyclarion.co.uk](http://www.cleoburyclarion.co.uk).**

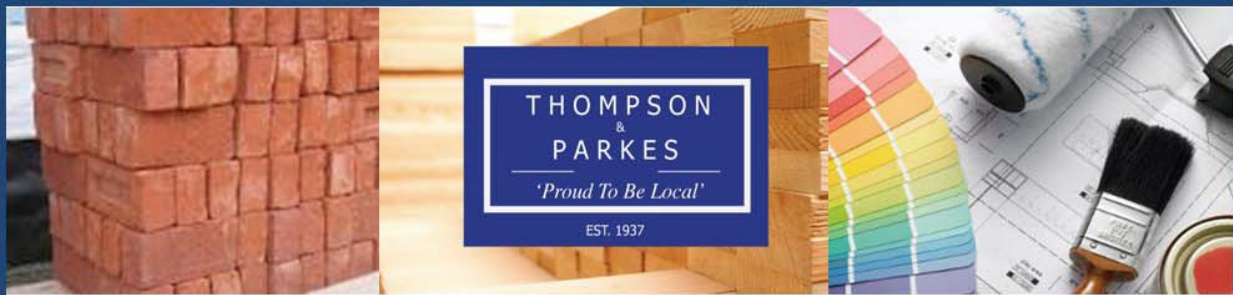
**DEADLINE FOR THE JUNE ISSUE: MAY 22nd. CONTRIBUTORS PLEASE NOTE THAT THIS IS THE LAST POSSIBLE DATE TO RECEIVE REPORTS.**

**Editor and Advertising Sales:** Jim Reynolds, 4 Childe Road, Cleobury Mortimer, Shropshire DY14 8PA. Telephone: 01299 270642 Mobile: 07410 977 212

E-Mail: [editor@cleoburyclarion.co.uk](mailto:editor@cleoburyclarion.co.uk) or [uncle.jim@icloud.com](mailto:uncle.jim@icloud.com)

The Clarion On The Web: [www.cleoburyclarion.co.uk](http://www.cleoburyclarion.co.uk)

Printed by Badger Print and Design of Shifnal, 01952 730511



THOMPSON  
&  
PARKES

*'Proud To Be Local'*

EST. 1937

Your local specialist supplier of  
Insulation, Timber, Plywood and all Building Materials

# THOMPSON & PARKES

## SANDSTONE - Best offer locally!

A natural product, Stoneplus Raj Indian sandstone has subtle tones and ideal for traditional patios.

15.25m<sup>2</sup> patio packs including 900 x 600, 600 x 600, 600 x 300 and 300 x 300 slabs

Just £24.50/m<sup>2</sup> - £373.63 +VAT per pack

**While stocks last and available at all outlets!**



## Proud to be Local

[www.thompsonandparkes.co.uk](http://www.thompsonandparkes.co.uk)

**Stocking and Delivering all Your Building and DIY Materials**

Kidderminster 01562 745881  
Oldington Trading Estate DY11 7QP

Oreton 01746 718414  
Cleobury Mortimer DY14 0TH

Stourport 01299 534545  
Minster Road DY13 8AB