

# The Cleobury Clarion



SERVING CLEOBURY COUNTRY

March 2017



*If you go down in the woods today.  
It's probably best if you do it with  
the Footpath Association.*

March is the month when the countryside rouses itself after winter hibernation and green begins to appear everywhere as summer approaches. A great time to walk out and discover the lovely countryside that is all around us.

Even in February, normally the most grey and cold month in the calendar, you can find delights. So as the weather warms and the countryside puts on her spring dress, put on some decent shoes and walk out to greet the rebirth of a beauty that is free for all to enjoy.

See Page 21 inside.

## JOHN COPE

February saw the passing of one of the nicest men you could ever wish to meet. John Cope and his excellent butcher's shop was a landmark on the main street, where his fine tenor voice often rang out along with much laughter. He baked pork pies that won numerous gold medals at local shows and if you bought a cut of beef, it had hung for 21 days to produce its best flavour.

Through his later years he fought the prostate cancer that finally claimed him, but always had a smile and a kind word. Our sympathies go to Valerie, Sue, Jill and their families on their great loss.



## THE MAY ELECTION

On May 4th we elect both County and Parish councils to guide us through the next four years. With the country's withdrawal from the European Union and further shifts of funding from Whitehall to local sources, it will be a testing time.

The Clarion will give space to any candidate in the two elections to explain both their experience and future plans to the local electorate in our May issue. Those concerned will have a maximum of 200 words to state their case, which should be with the editor no later than April 20th, to give a little time to adjusting the layout. Any script exceeding the 200 word limit will be edited down to size; no exceptions.

And finally, an appeal to all voters to please turn out and put your cross against the names of those you favour. If we have a Parish council or County councillors who have a sizeable percentage of the electorate behind them, it gives them extra credibility when they speak or negotiate on our behalf. And people willing to work for us do deserve support.



## CLEOBURY CHIROPRACTIC

31 High St. DY14 8DQ

[www.notjustaboutbackpain.com](http://www.notjustaboutbackpain.com)

A refreshingly gentle method of chiropractic suitable for all ages.

\* BACK PAIN \* SCIATICA \* POSTURAL PROBLEMS  
\* SCIATICA \* SPORTS INJURIES \* JOINT PAIN

PLUS \* CORPORATE COMPUTER (DSE) WORKSTATION ASSESSMENTS

\* BACK CLASS - Weekly exercise class for those with back/neck pain

Sue Brown MA MSc DC MMCA

07932 00 00 28

Hands for Heroes  
Free Chiropractic Care for War Veterans



GCC registered  
General Chiropractic Council  
[www.gcc-uk.org](http://www.gcc-uk.org)

# CLEOBURY FUNERAL DIRECTORS

*Incorporating Wyre Forest Funeral Service*

**'The Local Family Funeral Company You Can Trust At Your Time Of Need'**



***UNDER THE PERSONAL SUPERVISION OF ADRIAN SATTERLY***

**Our reputation has been built on trust and professionalism. All our attention is concentrated on satisfying the needs of our clients and their families. Your neighbourhood is our neighbourhood and as Cleobury's only resident Funeral Director, with over 15 years' experience in arranging and directing funerals, we take personal pride in serving you well.**

\* Pre-Payment Funeral Plans  
\* Home Visits Available

\* Horse Drawn Funerals  
\* 24-Hour Service

\* Monumental Masonry  
\* Catering & Venue Arranged



*'It is a rare privilege to be a Funeral Director, to stand in a sensitive position at a crucial time, in the midst of your family, knowing that the quality of our service, knowledge and reputation will help you through this difficult time in your lives'*

**9, TALBOT SQUARE, CLEOBURY MORTIMER**

**[www.cleoburyfuneraldirectors.co.uk](http://www.cleoburyfuneraldirectors.co.uk)**

**TELEPHONE: 01299 540541 or 07450 764214**

***'Serving the local communities with dignity & understanding'***

**The Cleobury Clarion, March 2017.**  
**Volume Fourteen - Edition Twelve**



*Another award for chef Islam  
Uddin at The Lamp.  
See Page 5.*



*New lease of Life at the Live.  
See Page 31.*



*Deg and Marie, new faces at  
Lower Street Garage.  
Page 55..*

**And On Other Pages....**

- |                                   |                                     |
|-----------------------------------|-------------------------------------|
| 5 - Lots of Praise                | 32 - The Social Calendar - Part One |
| 7 - News from the Parish Church   | 33 - The Social Calendar - Part Two |
| 9 - Good Cause, Good Evening      | 35 - Clarion Coppers                |
| 11 - Social Club News             | 37 - On the Buses                   |
| 13 - New! Red Hare Tips and Facts | 39 - Cleobury's Swifts              |
| 15 - The Clarion Jobs Page        | 41 - March in the Wyre Forest       |
| 17 - World War One Committee      | 45 - Cleobury Dental Practice       |
| 19 - Severn Edge Vets             | 49 - New Face at Bayton School      |
| 21 - The Parish Walk              | 57 - Kinlet's Big Disco Night       |
| 23 - Another World War One Story  | 59 - Cleobury Patients' Voice       |
| 25 - Kell Elliott                 | 61 - Cleobury Cosmetics launched    |
| 27 - Philip Dunne MP              | 63 - Local Information              |
| 29 - On the Market - Cosy Kitchen |                                     |

**The Clarion is on the web  
from the 4th of every month.  
[www.cleoburyclarion.co.uk](http://www.cleoburyclarion.co.uk)  
All 60 pages and the adverts**

RED  HARE

**“Your hair is our best  
advert.”**

**www.redharesalon.co.uk**

**01299 270702**

45 HIGH STREET, CLEOBURY, DY148DQ

**COLOR.ME**  
by KEVIN.MURPHY

**Agricultural Team**  
**Legal specialists in all things rural**

- Planning, Land Registration and Development
- Buying and Selling Farms and Rural Property
- Sporting and Fishing Rights
- Restrictive Covenants
- Farming Dispute Resolution
- Business Diversification
- Tenancy Agreements
- Tax Matters for the Farming Community



[www.painters-solicitors.co.uk](http://www.painters-solicitors.co.uk)

*Serving the Wyre Forest  
for over 60 Years*

For more information contact:

Nicholas Hughes on 01562 822295 or Wendy Beaumont on 01299 822033



## **IN PRAISE OF...**

Steve Knott's father had an unhappy accident one weekend last month. His denture broke.

Early on Monday Steve took the bits to the dental practice, but as Knott Senior was not registered as a patient, there was nothing they could do immediately. They suggested he try the dental technician.

"I didn't know there was a dental technician in the town, but they gave me Neville Weaver's number and he was available that morning."

"It must have been gone 10.30 when I took the denture down to him and he promised to deliver it to me in Simply Fresh when he walked the dog later. At about a quarter to twelve, there he was with the denture mended! I thought it was really good service."

Neville works from Lower Street in Cleobury and his number is 07973 856 733.

## **AND MORE PRAISE.....**

The Lamp Restaurant in Cleobury's High Street has added to its list of awards.

In January the Good Food Awards for 2017 were handed out and The Lamp and chef Islam Uddin were amongst those acknowledged. As the certificate that is now framed and hanging proudly on the wall says:

"These premises have demonstrated exceptional levels of food quality, service and value when compared to the industry benchmarks in their category."

Chef Uddin was acclaimed Curry Chef of the Year back in 2015, and this latest award shows that he's keeping the standards high.



*Chef Islam Uddin at work in the spotless Lamp kitchen, his Curry Chef of the Year badge worn proudly on his jacket.*

## **A JOB WELL DONE**

Val Breakwell has stepped down from the position of coordinating the showing of films at the monthly 'Flicks in the Sticks' that consistently draws crowds to the Parish Hall.

She started the whole thing off more than 12 years ago, so has certainly earned a rest. In that time she tells us that the evenings have entertained more than 6,000 people. A really great contribution to the life of the community.

As an interesting footnote, Val tells us that Ron brought home some documents from a World War One committee meeting, including a report of a dance held in the Parish Hall during

WW1 in aid of a severely wounded soldier. That soldier was Val's grandfather, who lived at Lower Forge, where her father was born.

## **BOOKS WANTED**

The library are planning to have a book sale later this year, the exact date yet to be decided.

If you have books that you no longer need and would like to donate them to the cause, please contact Clare Todd on CM 272300.

## **COACH TRIP TO BIRMINGHAM**

Mrs Gregory up on Clee Hill is organising a Saturday coach trip to Birmingham on March 25th. The coach will stop in Cleobury Mortimer and any of the other trips planned for this year will do the same if there are seats booked.

You can book your seat with Mrs Gregory on 01584 891464. Any monies raised on these trips will go to charities.

## **KA OPEN MIC NIGHTS**

Wendy at the King's Arms is organising a regular Sunday Open Mic Night, starting at 6.00 on the 5th this month. They will be a regular feature, always on the first Sunday in the month, starting at 6.00

Any type of music, any acoustic instruments, any age of performer, it will all be about people showing off their talent in a friendly, family atmosphere. If you don't play an instrument, just come along and listen while you sip a glass or two.

**The Clarion is on the worldwide web, from the 4th of every month**

**[www.cleoburyclarion.co.uk](http://www.cleoburyclarion.co.uk)**

**We have readers in Hong Kong, New Zealand and America.**



**CM BESPOKE CARE**

 Care Quality  
Commission  
Registered

 SPIC  
Shropshire Partners In Care

Personal, Nursing and Domestic care.  
Tailored to your needs.

**Call for a free consultation**

**Tel: 01746 718816**  
**Mobile: 07943834132**

[www.cmbcare.co.uk](http://www.cmbcare.co.uk)  
[www.facebook.com/cmbcare](https://www.facebook.com/cmbcare)  
email: [cmbespokecare@btconnect.com](mailto:cmbespokecare@btconnect.com)



**cleobury  
wash house**

**DRY CLEANING & LAUNDRY SERVICE**  
**20 HIGH STREET, CLEOBURY MORTIMER**  
**01299 270571**  
**HOUSEHOLD & COMMERCIAL WORK WELCOME**  
**FULLY ATTENDED, OPEN 7 DAYS**

Self Service ~ Full Service Wash/ Dry/ Fold/ Ironing ~ Large Machine for Big Items  
Service Washing for Duvets/ Blankets/ Sleeping Bags ~ Team Sports Kit Laundry Service  
Equestrian Rug Cleaning ~ Laundry Service for Pet Items  
Professional Shirt Service ~ Nikwax Wash & Proof for Outdoor Clothing

*.... the place to air your dirty laundry!*

## **TDC CARPENTRY SERVICES**

- Fully insured qualified professional
- Excellent workmanship and quality customer care
- From hanging doors, fitting kitchens to bespoke projects

**Tim Clare - 01299 270568 / 07890 519980**

## **John Brazier & Co**

Accountants & Business Advisors

Accounts – Company, Partnership and Sole Trader  
Tax Returns – Corporation Tax and Personal  
VAT - Returns and advice  
Payroll Service including RTI

For a personal and  
professional service

Contact John Brazier or Sarah Morgan to discuss your requirements on 01299 271473 or email at [info@johnbrazierco.co.uk](mailto:info@johnbrazierco.co.uk). Alternatively, you can arrange a meeting at 53, High Street, Cleobury Mortimer, Worcestershire DY14 8DQ

01299 271 473

## **CLOWS TOP GARDENING CLUB**

March is one of the busiest months for seed sowing, using fresh seedling compost will give good results.

The weather can be tricky, with sunshine one day, hard frost the next and often very windy. However, the daylight hours are getting longer and the ground is warming up. Daffodils and spring bulbs are giving fabulous displays. If time and weather permits try to do some weeding; you will benefit from this early start later in the year.

It's Mother's Day this month. For a simple gift add some packets of annual seeds in the card; after sowing these flowers will last all summer long.

Our next meeting will be on Wednesday 22<sup>nd</sup> March, it will be the club Spring Show and the speaker for the evening will be Michael Hardwick on Spetchley Park & Gardens.

*Pauline Bowen*

## **NEWS FROM THE PARISH CHURCH**

Sunday January 29th was an important day for our church, with two special events. In the morning, the usual 9.45 service was replaced by a 'Year of

Unity' service at 10.30. The Ludlow Deanery is holding seven of these services, each at a different church (with 42 in the deanery there's plenty to choose from), between the First Sunday in Advent 2016 (27 November) and the Feast of Christ the King on 26 November 2017. The service, attended by visitors from other parishes in the deanery, was conducted by the Rector, the Reverend Ashley Buck, with the Reverend Ian Gibbs as deacon. The preacher was the Reverend Brigitte Malik, who spoke about the life and work of Martin Luther whose seminal *Ninety-five Theses* were first published 500 years ago this year. Whether they were nailed to the door of the church in his home town of Wittenberg, as the story goes, is not clear, but the ideas they contained led directly to the Reformation and the establishment of Protestantism as a break from the Roman Catholic Church. Reverend Malik, an ordained minister of the Lutheran Church in Germany since 1988, has been working with the Ludlow Team Ministry since 2013.

In the afternoon a special Choral Evensong was held in Hereford Cathedral, at which the Reverend Ashley Buck was

installed as a Prebendary of the Cathedral. At the same service, one other Prebendary was installed, and a Chapter Lay Canon inducted. A coach from Cleobury was laid on, and 36 Cleobury parishioners were able to support Ashley's installation. Near the end of the service, the literal in-stall-ation took place, with Ashley being assigned the stall in the quire belonging to the Prebendary of Huntington, so called as the Prebendary was originally supported by income from rents from the village of Huntington. This Herefordshire village, which lies on the Welsh border, is about 10 km north of Hay on Wye and was part of the Hereford Cathedral estates as far back as the eleventh century. Older readers may recall that both Rev Colin Oldroyd and Rev Robert Horsfield were also promoted to be Prebendaries during their incumbencies here.

*Mark Baldwin*

## **SILLY BITS**

**Humpty Dumpty sat on a wall,  
Humpty Dumpty had a great fall.**

**The structure of the wall was incorrect,**

**So he won ten grand with Claims Direct.**

**(Anon.)**

**What this country needs are more unemployed politicians.  
(Edward Langley)**

Clows Top Garage  
Clows Top  
Tenbury Road  
Kidderminster  
Worcestershire

*Poppys Garden Benches*

Telephone: 01299 832227



Quality Handmade Heavy Duty  
Picnic Benches



Mobile: 07812559530



From a choice of either strong solid timber or beautiful Welsh cedar wood. These handcrafted benches are a must have.

Unlike flat pack benches, these are quality constructed with approximately 2 Inch thick solid wood.

Due to the sheer size and weight of these benches we do offer delivery. For more information on this, or any general enquires please contact us.



Email: [D\\_Tramontana@hotmail.co.uk](mailto:D_Tramontana@hotmail.co.uk)

Website: [www.poppysgardenbenches.com](http://www.poppysgardenbenches.com)

**Professional. Affordable. Local.**



### **Electrical Installations**

No matter the size, we can gladly undertake all Domestic, Commercial and Industrial installations you require.

A family run business, with over 25 years industry experience.

From period properties to agricultural solutions, we provide a professional service every time. We also do call outs and emergency work.

### **Renewable Energy**

Protect yourself from rising energy bills by considering renewable energy.

Solar PV is the most accessible way you can save energy by producing electricity from the sun. Earn a tax free income from the electricity your system produces.

Speak to us about how renewable energy can benefit you or your business.

**Whatever your query, give us a call.**

**T: 07971 096267 / 08450 564173**

**W: [www.awe-services.co.uk](http://www.awe-services.co.uk)**

**Two Staks, Eagle Lane, Cleobury Mortimer, Worcs. DY14 8RA**



## **A GOOD CAUSE AND A GOOD EVENING**

Mark Baldwin's January talk on the German occupation of the Channel Islands during the 1939-45 World War II was a sell-out. The Sports and Social Club did their usual great job, handing out a pint and a Wyre Pork Pie for each ticket presented. Great value.



*Dr Baldwin in full fascinating flow,  
with a sketch by Adolf Hitler, no  
less, up on the screen.*

Dr Baldwin explained the location of the Islands and the German perception of them as a vital part of their defending of the Atlantic coast. Huge defences were built, of such quality that few of them have been removed, though Dr Baldwin did confirm later that

many of them are partially deep underground and not very visible. Perhaps they are still a strong tourist attraction? An unusual fate for such great slabs of concrete. Amongst the selection of pictures shown was the sketch of a gun emplacement actually drawn by Adolf Hitler himself.

In fact the Channel Islands did not feature as a major place of conflict either when the German forces raided or when the Allied troops reoccupied Europe as they pushed for the final victory. A story told by a man who had clearly researched his subject deeply and related another historic episode in a manner that gripped his audience.

The result of a good evening out was a total of £374 raised for the Severn Hospice.

## **WALKING FOR HEALTH**

Walking for Health begin their summer season of twice monthly walks on March 1<sup>st</sup> starting from the Sports and Fitness Centre at 10.00am every first and third Wednesday. Walks are between 30 and 60 minutes, led by friendly trained people, are free, sociable and cater for all abilities. Just turn up

in good time with suitable clothing and sturdy footwear. A good opportunity for a social chat with the bonus of post walk refreshments supplied by Lacon Childe School.

WfH is particularly popular with the over 55s. Regular exercise can reduce the risk and effects of many health problems but please seek advice from your GP or nursing staff if you have a medical condition that is affected by physical exercise.

For further information, please contact Mandy Smith CM270312 or Alan Kimber 271754, or visit [www.cmfa.co.uk](http://www.cmfa.co.uk)

*Alan Kimber*

## **ROCK PATHFINDERS**

This month's dates and walk details:

March 2nd: 10.30 am start from Worcester Woods Country Park, Wildwood Drive, Worcester WR5 2LG. Or 878543 if you use an Ordnance Survey map.

March 16th: 10.30 short Annual General Meeting at Rock Village Hall, Rock DY14 9SD or 735712 Ordnance Survey, then a walk out into Worcestershire.

Everyone is welcome to join in the walks. Full programme on [www.rockpathfinders.16mb.com](http://www.rockpathfinders.16mb.com) or talk to Alan on 01299 400304.



## **Home Support Services**

All staff enhanced DBS checked with over 20yrs experience and training within the local authority/social services mainstream and dementia care sector. Fully insured.

### **Are you in need of support with the following basic day to day tasks?**

Assistance during the day or night

Companionship

Shopping/Household tasks

Completing Forms

Pet Care

Attending social events/ appointments

Contact Liz

Tel: 01299 271623

Mob: 07826 929222

[liz@lifelifeathome.co.uk](mailto:liz@lifelifeathome.co.uk)

**Other support services available on request.**

**[www.lifelifeathome.co.uk](http://www.lifelifeathome.co.uk)**

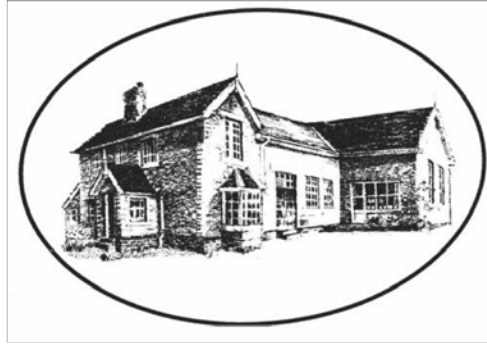
Contact Tracey

Tel: 01299 211660

Mob: 07957 659909

[tracey@lifelifeathome.co.uk](mailto:tracey@lifelifeathome.co.uk)





Bayton C of E Primary School, where our mission is

**TO BE THE BEST THAT YOU CAN BE!**

A school full of joy, inspiring our children to achieve their potential and to thrive and enjoy their learning experience, leaving confident in their abilities and ready for secondary school.

*For further details about our school, contact the office on 01299 832393. Alternatively, visit our new website at [www.baytonprimaryschool.co.uk](http://www.baytonprimaryschool.co.uk)*

# Cleobury Freezer Centre

6 Newhouse Farm - Tenbury Road - Cleobury Mortimer  
01299 271345

Our huge range includes the following, with many more items available

## Fruit

Strawberries  
Raspberries  
Blueberries  
Cranberries  
Blackcurrants  
Redcurrants  
Apple Chunks  
Mango Chunks  
Summer Fruits  
Forest Fruits  
Rhubarb

## Vegetables

Button Sprouts  
Broccoli  
Cauliflower  
Honey Parsnips  
Peas  
Mushy Peas  
Baby Onions  
Baby Carrots  
Asparagus  
Stir Fry Mix  
Whole Beans

Free Delivery  
For all orders over £20

Opening Hours  
Mon—Fri 0900-1800  
Sat 0900-1200



## Mr Daves

Chicken Balti  
Lamb Balti  
Chicken Tikka  
Rogan Josh  
Thai Red Curry  
Chicken Korma  
Prawn Balti  
**PLUS**  
Garlic and  
Coriander Naan  
Garlic Slices

## Individual Fish Fillets

Cod  
Haddock  
Salmon  
Tuna  
Swordfish  
Kippers  
**PLUS**  
Prawns  
Scallops  
Mussels

## SOCIAL CLUB HAPPENINGS

The Social Club continues to be well used by the community as a venue for various functions and sporting groups. In the Club Committee's continued aim to improve facilities and using match funding from the Parish Council, work will commence on completely refurbishing all the toilet facilities, starting with the disabled and baby-changing access. Don't panic Club users, there will be alternative toilet facilities when a toilet block is being worked on.

Following the success of last year's Big Quiz, Sunday March 5th sees its return with the ultimate Quizmaster, Justin Parker. All proceeds will go to local charity Cleobury Co-Co, who train volunteers to provide a much needed and valuable service in helping the vulnerable in our community. The cost is £15 for teams of up to 6 people. Registration starts at 6.45pm with the quiz starting at 7.30pm.

The Club will be showing the remainder of the Six Nations rugby matches in March. We would remind sports fans that we have two large TVs and will show most sporting fixtures televised on BT/Sky TV, however please bear in mind

that TV coverage in the main room is subject to function bookings.

Open Mic Night this month will be on Thursday the 30th, starting at 7.30pm. This is an evening of mixed live music, both bands and solo artists welcome. Musicians bring themselves, their instruments and their talent, so come along to support them and have a listen.

All Club events are posted on the outside notice boards, as well as on our Facebook page. Our Club Steward, Andy Goold, is available for enquiries on 01299 271488.

*Glenys Turpin*

## ANOTHER TALK BY DR MARK BALDWIN

If you missed Dr Baldwin's excellent presentation on the occupation of the Channel Islands in January, there is another chance to hear him speak on March 14th at Lacon Childe School. His subject will be the Enigma coding machine used by German forces during the 1939-45 World War, on which he is a recognised authority.

The talk starts at 7.30 and the modest admission charge of £4.00 for adults will include refreshments. The event is open to everyone who would like to

hear this excellent speaker. Details: Mrs Sant on CM 270983.

## COURT APPEARANCE

Mrs Elizabeth Griffiths appeared before Telford Magistrate's Court on January 31st and confirmed her plea of Not Guilty to the charge of the harassment of Matthew Sheehan, Clerk to Cleobury Mortimer Parish Council. This was a further preliminary hearing and the actual trial has now been set for May 26th at Telford, at 10.00am.

## AN APOLOGY

In the back cover advert for Nock Deighton in the February issue was an attractive bungalow in Pinkham Lane. A very appealing place in a leafy garden.

But the price was wrongly put at £375,000 when it should have been £325,000. If this confession means that someone suddenly realises that it is within their budget, then we apologise for the correct news coming to you so late.

The fault was entirely the editor's, who hopes that this note may persuade prospective buyers to take a closer look. We have arranged for future adverts to be sent to Nock Deighton for checking, as a precaution against that fool of an editor. JR



# Gilbert Carter

## Specialist Joinery

- Built in Wardrobes
- Double Glazed Wooden Windows
- Staircases
- 

Email: [Gilbertcarter51@gmail.com](mailto:Gilbertcarter51@gmail.com)  
[www.gcartersmartjoinery.com](http://www.gcartersmartjoinery.com)

01299  
270626

Qualified tradesmen, fully insured

**Tiny Stots**  
Informal parent  
and toddler group  
Fridays (term time)  
10am-noon

# Chorley Family Playgroup

Located  
next to  
Stottesdon  
School



...shaping the future

Ofsted  
'GOOD'  
report

Highly-qualified staff providing Early Years Foundation Stage learning in a happy, safe and stimulating playgroup with a beautiful garden and outdoor play area.



Open  
Mon-Fri  
8am-5.30pm  
(term time)  
Competitive fees  
Vouchers accepted  
Holiday care available

Extra-curricular  
activities including  
yoga, dance,  
craft projects, trips and  
gardening to support  
your child's learning  
through play.

Community orientated  
with strong links to  
local schools.  
15 hours per week  
of funding available  
for children over 3.

01746 718769 [www.chorleyfamilyplaygroup.co.uk](http://www.chorleyfamilyplaygroup.co.uk)

Ofsted Reg. No. EY369688  
Charity No. 1018755

***Wild at Heart Flowers for your creations***  
***tel: 01584 890 928 & 07526 283377***



**Tailored wedding flowers  
Inventive funeral flowers,  
Wild and wispy  
or strikingly modern**

**29 Years in the trade.  
Inspirational floristry of all natures  
pre -ordered only. Book for appointment,  
or phone for a home visit.**



Free Local Delivery Service Covering from Cleobury to Ludlow

[Wildatheartflowers@hotmail.co.uk](mailto:Wildatheartflowers@hotmail.co.uk)

## **RED HARE TIPS AND FACTS**

A great idea from the Red Hare Salon, with a hair care tip and fact from a different member of staff each month. The first edition comes from Jo Apperley, Creative Director and boss:

**TIP.** In any good skin care regime we should all exfoliate and detox. The same is true for our hair and scalp. Use a Deep Cleansing Detox Shampoo once a week before your usual shampoo and conditioner.

**Benefits :** eliminates product build up, regulates oil production, brings life and shine back to dull colour, helps to eliminate scalp conditions, e.g. eczema and cradle cap, and it's great for swimmers.

**FACT.** Did you know that our hair grows for between 2 - 7 years. Hence why some of us tend to struggle to grow our hair past a certain length!

## **BUILDING INTEREST**

Paul French's carefully researched stories of Cleobury men who lost their lives in the 1914-18 World War have drawn some appreciative comments. And in this instance from Annette Burgoyne, some more information:

'I read the article on William Brown with interest, but I should let you know that William was taken Prisoner of War and I would say from my in depth research into the King's Shropshire Light Infantry that it is highly likely he was captured during the raid on the "Nose" by the 8th Battalion during the night of the 26th/27th November 1916. Source of information -Ludlow Advertiser 13th January 1917 which reported him missing and the Ludlow Advertiser 31th August 1918 which reported him dead as a Prisoner of War.

A document on the Commonwealth War Graves Commission site reports that he was buried in Rabrovo Serbis. His grave was at first marked as an Unidentified British Soldier along with several others in same row but at a later date the C.W.G.C. crossed out unknown and wrote each man's name.

*Annette Burgoyne*

*Thank you for that extra information, Annette. See Page 23 for this month's instalment in this history of local men whose lives were taken in that sad time. Ed.*

## **A SPECIAL CONCERT**

Local husband and wife team The Ludford Duo will be taking

over the Parish Hall on Sunday afternoon, April 9th, to offer a special concert. Ian and Janet Ledford are professional cello players, who combine to present a rare treat, with two of these mellow instruments in harmony.

They'll be playing a selection of fine pieces, including works by Offenbach, Albeniz and Paganini, starting at 3.00pm. To have two professionals playing in the town with tickets priced at a mere £6.00 for adults, £5.00 for concessions and Under 18s allowed in free is a rare treat and too good to miss. Tickets from Cleobury Country Centre on Love Lane, call CM 272300 or you can pay on the door. For more information, just call 01299 513062.



*Ian and Janet, the Ludford Duo  
photographed at Ludford Bridge.  
Where better?*



## **Small Animal Boarding**

Pet hotel for Rabbits, Guinea Pigs, Hamsters, Chickens and other small Animals.

- Spacious comfortable accommodation
- Initial inspection welcomed
- Every need catered for
- Competitive rates

[www.noahsarkboarding@wix.com/noahsark](mailto:www.noahsarkboarding@wix.com/noahsark)

**Call;** 01584 890111 or 07886 982691 **email;** [noahsarkboarding@btinternet.com](mailto:noahsarkboarding@btinternet.com)







**BAGGINSWOOD**

Bagginswood, Cleobury Mortimer,  
Nr. Kidderminster, Worcs, DY14 8NB  
Telephone: 01746 718732

## **HEATH FARM MEATS**

**Home produced beef, pork, lamb and mutton.**

**Home cured bacon, gammon, sausages,  
cakes, pickles and preserves.**

**OPEN 8.00 am to 5.30 pm**

**WEDNESDAY TO SATURDAY**

**01746 718732**

## ***Flowers by Fiona* est 1991**

**Fresh Flowers made to order**

**Special Occasions**

**Weddings, Anniversaries, Birthdays**

**Sympathy Tributes**

**19a High Street,  
Cleobury Mortimer**

**Tel: 01299 272 995**

**High Street, Cleobury Mortimer  
DY14 8DX  
TELEPHONE: 01299 271798**

*Bowkett's  
food  
Emporium*

**Open:~  
Mon to Fri 8.30am - 5pm & Sat  
8.30am - 2.30pm**

**Quality locally sourced meats and poultry cut and prepared  
by Lewis & Brett our skilled butchers**

**Bowkett's Gold Award Winning Traditional Pork Sausage - Cooked meats and British & continental cheeses -**

**Award Winning Speciality Sausages and Bacon, Bowkett's home-made Faggots, Lasagne, Cottage Pies,  
Sausage Rolls, Pork Pies, Scotch Eggs, Quiches and Coleslaw**

**Sandwiches & baguettes while you wait or call our friendly staff who will be happy to take your order**

**Hot tasty succulent chickens, sausage rolls and pasties**

**Delicious tasty baguettes and rolls baked on the premises and much more.....**



**Bowketts Food Emporium**



## **MARK WILLIAMS - PROFESSIONAL WILLWRITER**

**"A lifetime's attention to complex legal issues as a retired Detective Superintendent  
and now a Private Client Lawyer, means **you can definitely trust Mark** to write your Will."**

**Wills from £75, Free Will Reviews, 50% off Lasting Powers of Attorney,**

**Probate Support, Care Home Fee Avoidance**

**& Big Savings on Funeral Plans**

**Instructions taken in the comfort of your own home or workplace**

**T: 01299 251442 M: 07966 053887 E: [mark@ambalegalservices.co.uk](mailto:mark@ambalegalservices.co.uk)  
[www.ambalegalservices.co.uk](http://www.ambalegalservices.co.uk)**

**Fellow of the Institute of Professional Willwriters & Trading Standards Approved**





### Shropshire Fire and Rescue Service

#### On-Call Firefighters Cleobury Mortimer (Retained Duty System)

Shropshire Fire and Rescue Service is currently looking to recruit on-call firefighters at Cleobury Mortimer Fire Station. On-call firefighters agree to be available for a certain number of hours per week; they carry a pager and must be able to get to the fire station within five minutes. For this they are paid between £1,587 - £2,116 per annum (dependent on contract) as a Retaining Fee plus payments for attending incidents and drill evenings at Cleobury Mortimer fire station.

#### TO APPLY YOU MUST LIVE OR WORK WITHIN 5 MINUTES OF CLEOBURY MORTIMER FIRE STATION

To be a Firefighter requires special skills and qualities, not only do you need to be able to work under pressure as part of a team at operational incidents you need effective communication skills to deal with the public at fire safety events and in their homes. You will work within your local community to support our aim of preventing fire related incidents and road traffic collisions. The Service is looking for people aged 18 or more on their start date who can demonstrate a high level of physical fitness

For an information pack please contact us on 01743 260220, or email [HRAssistants@shropshirefire.gov.uk](mailto:HRAssistants@shropshirefire.gov.uk), stating your name, address and quoting Cleobury Mortimer

Shropshire Fire and Rescue Service is committed to equality and diversity at work. We positively welcome applications from disabled people and minority groups who are under-represented in our Service.

**Cleobury Dental Practice is looking for a highly motivated person to join our team to train as a Dental Nurse. Support will be given in Practice and you will be enrolled on an approved course leading to a qualification. You will need to have a minimum of GCSE C Grades in Maths and English.**

**This is a full-time position which will suit someone who is organised and has good communication skills. Please apply by 30<sup>th</sup> March 2017 by email with a letter and C.V to the Practice Manager to [compliance.cdp@telitmail.co.uk](mailto:compliance.cdp@telitmail.co.uk)**

Job Title/ Company	Job Requirements	How to Apply
Telesales Executive: B2B sales Logic Comms	Must have excellent communication, telephone & PC skills, demonstrate willingness to work on own initiative, previous experience desirable but not essential.	Apply to: <a href="mailto:comms@logiccomms.co.uk">comms@logiccomms.co.uk</a> for more information
House Team Supervisor—full time Pioneer Centre	To supervise house team members, lead & carry out duties in the operation of the Dining Room and house-keeping throughout the Centre.	Apply to: Karen Anderson 01299 271217 <a href="mailto:karenanderson@pioneercentre.org.uk">karenanderson@pioneercentre.org.uk</a>

# HOPTON BUILDING SERVICES LIMITED

All Aspects of Building Work Undertaken

BANK HOUSE, STOCKHALL LANE, HOPTON WAFERS, WORCESTERSHIRE, DY14 0EG

Tel: 01299 270 870

Email: [hoptonbuilding@yahoo.co.uk](mailto:hoptonbuilding@yahoo.co.uk) Mobile: 07977 495 163

Hopton Building Services is an established local contractor providing a full and comprehensive service in all aspects of building work from New Developments to Maintenance and Repairs.

Drawing on over 30 years' experience in the construction industry working for Local Councils, Housing Associations, Private Owners, Insurance Company's we specialise in:

- Disabled Adaptations
- **Full Central Heating Installations and Boiler Replacements**
- **Gas/Oil/Solid Fuel Appliance Services, Breakdown and Repairs**
- **LPG & Park Home Trained and certified**
- Property Extensions, Refurbishments and Alterations
- Roofing Works – Fibreglass Flat Roofing & Traditional Roofing.
- Full Bathroom, Shower and Kitchen Installations
- Damp Proofing
- Insulation Works
- Woodburner and Flue Installations
- Asbestos "Non Licensable Removal"
- General Building, Repairs and Maintenance Works
- UPVC Works
- Insurance Works

Our operatives are fully Qualified and Registered Gas Safe, HETAS, **OFTEC Engineers for Gas, Oil and Solid Fuel Appliances**, KBBBI Registered and CRB (DBS) checked.

All works carried out are fully guaranteed and comply with all current regulations.

Please call us for a free survey and a very competitive price.

## The Fighting Cocks Inn Stottesdon



An historic inn, officially dating back to 1830 as a pub, but older as a coaching inn, and a brew house. The Fighting Cocks is famed for its passion for local produce, real ales, and initiatives to support the local community. We sell local produce from the pub and shop including local fruit, vegetables, meats, and of course the pubs famous homemade pies. Homemade puddings are also served both in the pub and the shop - but you will need to get here early!

**Steak Nights Every Friday**  
**10oz local ribeye or rump**  
**Only £9.95**

**Senior citizen lunches**  
**Tuesday to Friday**  
**12:00 – 2.30pm**

**Live Music**  
**Saturday Evenings**



1 High Street, Stottesdon DY14 8TZ ♦ Tel: 01746 718270 ♦ [www.fightingcocks.co.uk](http://www.fightingcocks.co.uk)

## THE WORLD WAR ONE COMMITTEE

This voluntary group is working to make us more aware of the coming 100th anniversary of the end of hostilities and to celebrate that notable date. The Clarion sat in on their February meeting.

The installation of new street furniture in the town cemetery and on the High Street was discussed, including special seats and bins plus the erection of a lectern within the cemetery. Agreed that a plan and request for a grant be presented to the Parish Council. Councillor Debbie Brown offered to meet half the cost of the lectern and Ron Breakwell advised that the Royal British Legion would cover the other half.

A memorial plaque to be erected on the Eastern side of the Market Hall, matching that on the West side. The new plaque to commemorate the celebration of the centenary of the end of hostilities. The group congratulated Cllr Paul French on his series of Clarion articles about men who lost their lives in the conflict, his detailed research making the human element more obvious.

It was agreed that a window dressing competition during the

centenary celebrations be promoted with local businesses and shops invited to join in. The Royal British Legion will invite other associations to be involved in the event.

Dr Mark Baldwin has prepared an article about local community celebrations of the 1918 end of hostilities. The possibility of The Clarion carrying a special four page supplement to be assessed.

The next meeting of the Group will be at 10.00 on March 13th, in the Market Hall.

## CLEOBURY FUNERAL DIRECTORS GROWS

Adrian Satterly's quiet and correct manner fits his chosen profession perfectly. His funeral director business in Talbot Yard reflects this in the way it has grown from one to two units.



Which means he can now offer a furnished reception area and

family room next door to his original premises, while the original has been altered to offer two Chapels of Rest and a preparation room. A complete funeral service package, right in the town centre.

## THE LACON LOTTERY

The Lacon Childe School Parent Teacher Association runs a very affordable lottery with ten draws each year. It costs just £10 to have a flutter and last year there were ten payouts of £105 a time.

It's a very simple formula. All the money taken is divided equally between the prize fund and the PTA. So the more people who give it a try, the bigger the prizes.

There will be flyers with an entry form on the reverse side posted around Cleobury, you can collect a form from the school office if you prefer, or go to [www.lacon-childe.org.uk](http://www.lacon-childe.org.uk) and print off the form at home.

The draw takes place in school and the winners are announced on the school website and here in the Clarion. Good luck!

## SILLY BIT

**Ageing: Eventually you will reach a point when you stop lying about your age and start bragging about it.**

# Style House Salon

Your modern salon suitable for all ages

01299  
271919



38 High Street,  
Cleobury Mortimer  
DY14 8DQ



A small family run business specialising in quality wooden gates to suit all entrances.

Visit our website: [www.turnersgates.co.uk](http://www.turnersgates.co.uk)

Drop us an email: [turnersgates@outlook.com](mailto:turnersgates@outlook.com)

Or give us a call on: 01299 270 965



## Quality financial advice for family, for business, for life



I provide a comprehensive financial planning service offering specialist face-to-face advice tailored to you. My services include:

- Investment Planning
- Business Planning
- Retirement Planning
- Intergenerational Planning

I offer a no obligation initial discussion simply to establish whether I can help you.  
Please contact me on 07576 484494.

### de Courcy May Wealth Management

Email: [jon.may@sjpp.co.uk](mailto:jon.may@sjpp.co.uk)

Mobile: 07576 484494 | Tel: 0121 7336733

Website: [www.dcmwm.co.uk](http://www.dcmwm.co.uk)

de Courcy May Wealth Management represents only St. James's Place Wealth Management plc (which is authorised and regulated by the Financial Conduct Authority) for the purpose of advising solely on the Group's wealth management products and services, more details of which are set out on the Group's Website [www.sjp.co.uk/products](http://www.sjp.co.uk/products).



## Top Tips for Fearful Dogs

A fearful dog can be stressful for everyone. For the friend who just wants to say hello, for another dog who just wants to play and for the owner who wants their dog to be able to do all those things. There is no quick fix for a dog who is often frightened or nervous but here are a few tips to get the ball rolling.

### Tip 1. Stay Calm

When you predict something is going to make your dog scared (such as another dog or person), the natural reaction is to become nervous yourself. You might subconsciously become tense or reassure your dog that everything is ok.

By tensing up you are telling the dog that there is about to be an incident that is worth worrying about. If you remain calm and don't show the dog that you are afraid of the situation, they are less likely to be afraid themselves.

If you comfort a dog while they are acting frightened or nervous, you are actually rewarding them for showing that behaviour with attention. They will then repeat that fearful behaviour in future, in order to get more of your attention.

### Tip 2. Training Classes

Through training classes and strengthening the bond between you and your dog, you will increase their confidence when they are with you towards other people and dogs.

Start off slowly, just by being in the same vicinity as other people or dogs. Don't try to get anyone to greet your dog straight away, start off just by being around others. Over time (may take many months) and regular classes you will build up to people greeting your dog. Don't rush! One bad experience for your dog could possibly set you back to the beginning.

### Tip 3. Desensitization

By taking your dog to places with unusual sounds or lots of people and dogs regularly will slowly increase their confidence in these situations.

If your dog is particularly frightened of loud noises, you could always get a CD that plays noises such as fireworks, cars backfiring etc., in the house. By having this on quietly to start with and over time increasing the volume, the dog will get used to the noises that used to frighten them.

### Tip 4. Behaviour Modifying Pheromones

When a dog is born the mother releases a pheromone, called Dog Appeasing Pheromone (D.A.P), which calms the puppies and makes them feel safe. This pheromone also works on adult dogs and has been developed into products such as collars and diffusers for the home.

The pheromone doesn't affect anyone other than dogs and we can't even smell it!

Next time you're at the vets or in a pet shop, ask if they have any D.A.P products available and have a look.

### Tip 5. Seek Professional Help

Sometimes, the first 4 tips just won't be enough. If you are still struggling with your fearful dog you may need help from a professional canine behaviourist. Although we vets can give some behavioural advice, often we may refer dogs needing more in depth help to a professional behaviourist who deals with it all the time.

There are many different canine behaviourists out there and it can get quite confusing trying to find the best one for you. So before you get in touch with any ask your vet who they recommend.

### cTip 6. Don't give up

Getting your dog to be more confident and overcome their fears can be a long, challenging experience but by getting through it you will have a happier companion with a more fulfilled life at the end of it.

If you have any more questions please feel free to call Severn Edge vets and book an appointment to see someone for some face to face advice or ask about our FREE Nurse Clinics.



**Severn Edge**  
VETERINARY GROUP

**Mobile Vet Service**

**'No stress and all the home comforts'**  
Available Mon-Fri, 9am-3pm  
**01746 713 914**

Terms and Conditions Apply. Severn Edge Veterinary Group is the trading name of Severn Edge Veterinary Group Limited, a limited company registered in England & Wales, no. 9523786.

[www.sevg.co.uk](http://www.sevg.co.uk)



# *Ashley's Bakery*

Supplying fresh bread, daily from Ashley's Bakery in  
Cleobury Mortimer to our shops at:

**Cleobury Cafe Bakery Dept. 01299 271 517**

**Teme St, Tenbury Wells 07772 743570**

**Load St, Bewdley 01299 404147**

***Also available; Bakery Direct to the Trade***

***& Outside Catering***

**For more details:**

**Call 01299 271 283 High Street, Cleobury Mortimer (Est. 1988)**

Ashley's Bakery Unit 2, Old Station Business Park, Cleobury Mortimer



## *Cleobury Cafe*

**Breakfast, Lunch and Afternoon Tea  
available 7 days a week**

**Slush machine & Soft whip ice cream for the Summer!**

**A hot & cold takeaway service**

**Bakery Dept. Selling Ashley's bread & cakes  
Grab lunch on the run and pre-order on;**

**01299 271 517**

**High Street  
Cleobury Mortimer**

**Mon—Sat 7am—5pm  
Sun 8.30am—4.00pm**

## A PARISH WALK

10.00 o'clock Sunday morning, February the 1st. It's Parish Walk day and a crowd of about 20 is gathered outside the Parish Church, chatting and waiting for the day's leader to lead us around the local fields, woods and lanes.

Alan Kimber's in charge today and he explains that we're going through the Mawley estate to see the early snowdrops, but the usual route has been changed to avoid the worst mud at one spot. Through the Wells and up the path to cross the field next to White Gates and emerge on the Bayton Road. After stepping aside to allow a car through, we stroll down to the Rookery, where dignified thoroughbreds in the stables are admired before we move on. Across the River Rea and up through the woods to the weir, where the new footbridge is a wiser choice than the river path with the Rea in full flow.

There was one faller on the steep and muddy woodland path, but none the worse for the experience. Mud is a forgiving surface to explore with a tumble, but it doesn't do much for the state of your clothes, that's for sure.



*A short break in the Mawley woods for some to take photos, others to catch up, or just for a chat.*

It's a great pleasure to walk freely through the wooded Mawley estate. Our course was the established footpath, marked with discreet arrows put there by the Footpath Association, in cooperation with the Galliers-Pratt family.

Eileen, a new face on the walks, is a native of Bewdley and admitted that she didn't know how lovely the Shropshire countryside is until she moved to Cleobury and took up walking. That's true of most people who drive through the area to and from work but don't get the chance to see the place up close. Walking is the most effective way of doing that, even when the place is wet.

The route out of the woods and back to Cleobury included some pretty deep mud, which did make you wonder how bad the stretches our leader avoided could be. Everyone on these walks helps one another if needed, particularly down one steep muddy slope to the spot where Alan Kimber had worked out the easiest way to cross another stream. The sign of a good and thoughtful leader.

About two hours after 21 pairs of clean boots started out from the Parish Church, slightly fewer very muddy versions found their way to the front of the welcoming fire in the King's Arms and healthy thirsts were dealt with. Footpath Association chairman Geoff Hainsworth is always generous on these occasions and I walked home with a glow that reflected a morning's exercise and a drop of fine ale.

Anyone is welcome to join these monthly walks; you do not have to be a member of the Footpath Association. To learn more about this friendly, active group, take a look at their website:

**[www.cmfa.co.uk](http://www.cmfa.co.uk)**

*Jim Reynolds*



# CARROT TOPS



## YOUR LOCAL FRESH FRUIT & VEG SHOP

ALSO AVAILABLE; FRESH FISH, JAMS, PICKLES, COOKED MEATS, CHEESES, PATE'S  
WENLOCK BACON, MAWLEY MILK & CREAM, LOCAL HONEY & MUCH MORE  
BOX DELIVERIES AVAILABLE TO YOUR DOOR, HAMPERS MADE WHILE YOU WAIT

CARROT TOPS, 28 HIGH STREET, CLEOBURY MORTIMER

COME & SEE US; WE ARE OPEN 6 DAYS A WEEK

MONDAY – FRIDAY 8.30AM – 5.00PM

SATURDAY 8.30AM – 3.00PM

SUNDAY - CLOSED

OR CALL JULIE – 01299 272886 OR 07951 633585

Email: [Julie@carrottopsltd.co.uk](mailto:Julie@carrottopsltd.co.uk)

WE ARE ALWAYS HAPPY TO HELP

# *Robert Bradley Logs*

## *07794 798616*



*Seasoned Firewood, Hardwood,  
Softwood or Mixed loads of logs.  
Free Local Delivery*



Produced & bottled at  
Mawley Town Farm,  
Cleobury Mortimer  
01299 270359

**Mawley Milk**  
direct from the cows  
to a shop near you!

We guarantee you won't find tastier fresher milk with so little food miles.  
Early morning doorstep delivery available in Cleobury Mortimer

**Like us on Facebook/Mawleytownfarm**

To find your nearest stockist visit our website [www.mawleytownfarm.co.uk](http://www.mawleytownfarm.co.uk)  
email: [info@mawleytownfarm.co.uk](mailto:info@mawleytownfarm.co.uk)

## **THE CRUSTY COB**

### **BAKERY, SANDWICH BAR AND TEAROOMS**

Wide range of fresh bread supplied daily, including speciality items

Freshly made sandwiches to take away

Award winning pork pies from Reg. May

Large selection of cakes and confectionery

Telephone orders taken; Delivery service available; Outside catering

**Open from 8.00am to 5.00pm, Monday to Saturday**  
**18 Church Street, Cleobury Mortimer Tel: 01299 271190**

**simplyfresh**

Tel: 01299 270 182  
2/3 Talbot Yard,  
Cleobury Mortimer, DY14 8BQ.

Opening hours:  
Mon—Sat 7am—9pm  
Sun 8am-8pm

**Local & Seasonal Produce,  
Delicatessen Counter,  
Organic & Gluten free ranges,  
Greengrocery,  
Off Licence, Newspapers,  
Health Lottery,  
General Convenience Store**

## **FREDDIE KING**

**Paul French tells the story of another local hero.**

Fredrick William King was born in March 1887 in Cleobury Mortimer. By 1891 he was living with his parents Charles and Annie at Mortimer Hill, also in the house were his siblings Mabel 12 years old, Charles 10 and Violet 8 years. Charles was a farmer and dairyman.

Annie died in 1894 aged 38. Charles married again in 1901 to Charlotte Ainsbury born in Dudley. In 1901 Frederick was living at Whitegates, Cleobury Mortimer with his father Charles and Charlotte and three other children Percy 5, Dora 4 and Winifred 1. Charles was now described as an auctioneer and farmer. Possibly Percy was noted as Pte P A King 3A Company 4th Reserve, Coldstream Guards

Frederick enlisted in Cleobury Mortimer and was recorded in The Cleobury Roll of Honour as "acting Corporal, W King, Lion Lane, 5th Royal Irish Lancers".

The following information is from a family member:

Freddie King originally wanted to join the Cavalry but instead joined the Lancers. He went to Belgium on 8th August 1914 landing at Ostend. He fought in three battles including Mons and the Marne. Freddie was mentioned in despatches for bravery in one incident near Pezarches. He was in a group "caught napping" on their way to the front. There was thick fog, the Germans were shelling through it and a German armoured car broke through the detachment of 30-40 men. The car was a standard Daimler reinforced by steel plates for

protection, with two slits for the driver and observer to see out. Freddy was instructed by an officer "to go back and knock the car out by yourself." On horseback and without support, aiming through the slits with his rifle he killed the driver and wounded the observer.

It was thought that Freddie would have gained an officer's commission had he survived. As it was, it is believed that he was killed later that day when a large shell exploded over him and blew him to pieces. Freddie was killed on the 30th October 1914 and he is commemorated on the Ypres (MeninGate) Leper, West Vaanderen Belgium Panel 5. He is also in Ireland's Memorial records

The 5th Royal Irish Lancers was formed in 1689 as a regiment of Dragoons fighting at The Battle of the Boyne in 1690. Numerous further battle honours were gained over the next 60 years. After a further renaming in 1751 it became the 5th Regiment Royal Irish Dragoons in 1756 and then served in Ireland.

Freddy joined the Irish Lancers who up to 1756 had a proud past but were called Dragoons. Why? We can unravel this later.

In 1798 during the Irish Rebellion its troops were accused of treachery. An investigation discovered that only one rebel had infiltrated the ranks. However the Regiment was still punished by erasing them from the Army list for nearly half a century, on paper there was no 5th until 1858. In that year the Regiment was reformed and converted into a

Lancer Regiment 5th (Royal Irish) Lancers.

So let's unravel the term "dagoon," which originally referred to mounted infantry. They had been a feature of warfare from the very earliest times and could ride as well as having infantry skills. The procedure was that you rode into battle and as and when necessary you dismounted and fought on foot. Mounted infantry in the French Army were armed with a version of the blunderbuss called a "dragon" hence "dagoon."

Lances have also been used since warfare first began. In the 18th century battles would be fought with lances being used in repeated charges, then soldiers retired to replenish lost or broken lances and charged again.

By the 1914-18 Great War things had changed and lancers were used to make attacks relying on speed and ability to "duck and weave" courtesy of their mounted status. So Freddie was a member of a force with a history of many years: mounted infantry, but also fight on foot effectively.

Carrying a lance, sabre and rifle it cannot have been easy on horseback to accurately aim and fire. Subsequently rifles were shortened in barrel length to become a carbine, just like the "dragon." Easier to use, but given the account from regimental records of Freddie's encounter with the staff car, we should marvel at his horsemanship, marksmanship and loyalty to his colleagues.

# The Miah Brothers Famous Spice Empire

*Bringing great taste and value to Cleobury Mortimer for 17 years*



17 High Street, Cleobury Mortimer  
6-11pm 6 Days a Week  
Acclaimed Indian restaurant with  
wide range to suit all tastes.  
Sunday Buffet from 12.00pm-  
9.00pm.  
As much as you can eat for just  
£9.95 a head.  
Free home delivery up to 5miles  
Reservations: **01299 270419**



6/7 Church Street, Cleobury Mortimer  
*'Fine bar, excellent food at prices to  
suit all pockets'*  
Top Value dining.  
Our Dine In Meal Deal gives you a:  
starter, main course and naan or  
rice for just £9.95.  
Tuesday to Sunday, 6.00-11.00pm  
Reservations: **01299 271485**



57 High Street, Cleobury Mortimer  
6-11pm Wednesday- Sunday  
Dine at home with the same great  
quality our restaurant offers.  
Monday- Tuesday  
collect Takeaways from  
Spice Empire:  
Tel: 01299 270419  
Free home delivery up to 5miles.  
Orders: **01299 271604**

## SPICE NEWS:

Orders over £40 come with free bottle of wine. Free Delivery up to 5miles from the Spice Empire & Spice Express.  
[www.facebook.com/pages/the-spice-empire](http://www.facebook.com/pages/the-spice-empire)

## CLEOBURY MORTIMER CARPETS

### Supplying and Fitting of:-

- Carpets
  - Natural floorings (Cair, Sisal & Seagrass)
  - Vinyls
- Carpets supplied by: Victoria Carpets, Fibre Flooring  
& Alternative Flooring at Unbeatable Prices

### Contact Details:-

Address: 26 High Street  
Cleobury Mortimer •DY14 8BY  
Telephone: H: 01299 270095  
M: 07739 186163  
Email: [garethleach@aol.com](mailto:garethleach@aol.com)  
or check out our new website  
[www.cleoburymortimercarpets.co.uk](http://www.cleoburymortimercarpets.co.uk)

# AL Pass Driving School

*You never forget the day you*

## Pass your driving test

### Introductory lesson **free!**

Your local driving Instructor 0789 67 41041





## **KELL ELLIOTT**

Kell Elliott died peacefully in her sleep on February 2nd at Doddington Lodge, Hopton Wafers.

Kell was a caring mother, an inspirational teacher, working for the majority of her career at Sladen and a talented musician who took great pride in her family, profession and music. She will be sadly missed by her husband Bill and two sons, Charles and Geoff and their families.

A private cremation will be followed by a Thanksgiving and Memorial Service on Thursday March 2nd at Saint Mary's church, Cleobury Mortimer, starting at 1.00pm.

The family request no flowers. Donations in lieu of flowers will be shared between Doddington Lodge and the Peel Cathedral Restoration Fund.

## **MAJOR WEDDING FAIR AT DETTON HALL**

The remarkable Detton Hall, an outstanding example of an Elizabethan manor house that is believed to date back to 1575, is hosting the Detton Hall and Residents Fair Spring 2017 on Sunday the 19th of this month. An impressive title for what

promises to be an outstanding event.

It will run from 12.00 noon to 4.00pm, admission is free and organisers Becky and Tanya have lined up all the suppliers who are backing their wedding and party business, including accommodation from luxury tipis and yurts to marquees. If you would like to attend, email [enquiries@dettonhall.co.uk](mailto:enquiries@dettonhall.co.uk), to give them an idea how many they have to cater for.

## **NEEN SAVAGE W.I.**

The very interesting speaker at our February meeting was Charmaine Leek from Clear Hear, an audiologist based at the Medical Centre in Cleobury. If anyone is worried about their hearing or is frightened of wearing a hearing aid, you would be amazed at the range of modern discreet aids and implements that are available now. It could change your whole life - we were all very impressed.

Our next event is a member's meeting. The committee do not know what has been planned, but I am sure it will be a very enjoyable night. Everyone is welcome to join us on March 8th at 7.30pm at Neen Savage Village Hall - we look forward to seeing you there. *Julie Hobin*

## **CRIME REDUCTION GROUP**

Becoming a SmartWater town has brought enquiries from other parishes and some of our kits were made available for Hopton Wafers. Three residents have had their house insurance reduced because of the wide use of SmartWater and the existence of modern CCTV cameras. Matt Sheehan asked that any success in reducing the cost of insurance be reported to him. Kit Smith, first to get a reduction, outlined the need to explain the SmartWater and CCTV installations and to approach the company when your insurance is due and they want your money. The new CCTV system produces pictures good enough to be used as proof of an offence.

Bad parking at the town centre crossing was discussed and the police will be asked to visit on occasions and issue warning notices and summonses. An application has been made for funding for more CCTV cameras.

PCSO Jones reported a lot of cold calling at the door and associated theft. Such calling should be reported to the police on a 101 call. Next meeting at the Sports and Social Club, 11.00am on April 24th.

### **Do you suffer discomfort from:**

- Corns •Callus/Dry skin •Thickened nails
- Verrucas •Athlete's foot •Ingrowing toe nail
- Being unable to cut your own nails

Also provide:

- Complete foothealth check •Medical pedicure
  - Foot massage •Evening and weekend treatment available
  - Free Vascular check of the foot
- 20 years experience



For professional treatment of foot related problems at my surgery, your workplace or in the comfort of your home

**Contact IRENA**  
**01299 841277**  
**07795 958186**

The Old Farm House, Button Bridge, Kinlet  
DY12 3AW •email: [hessins@gmail.com](mailto:hessins@gmail.com)  
Irena s.a.c.dip.(Dist). f.h.p.p. n.c.f.e. r.f.h.p.



Summer/Winter Sun Holidays  
Cruises  
Ski Holidays  
Weddings and Honeymoons  
City Breaks  
Tailor-made Holidays  
Flight Only  
Theatre Trips  
Heritage Day Trips

# Tranquillity Travel

INDEPENDENT TRAVEL CONSULTANTS  
EST 2003

*Come in, WE'RE*  
**OPEN**



01299 400130

[www.tranquillity-travel.co.uk](http://www.tranquillity-travel.co.uk)  
within the Mercure Hotel, Bewdley (free parking)  
Find us on Facebook @TranquillityTravel

Fully ABTA/ATOL Bonded  
First Class service from booking to return  
24 hour emergency phone number  
Experienced, well trained staff

# SPAR



National Lottery & Post Office

OPEN:

7am-8pm Mon Thurs

7am-9pm Fri-Sat

8am-8pm Sun

General store, off licence,  
newspapers, gas, electric  
top-ups, Health Lottery,  
bill payments & more.



Telephone: 01299 270236

## BODEN & SON DELIVERIES est. 2013

Delivering fresh Mawley Milk from the farm to your doorstep

Delivering to:

CLEOBURY MORTIMER, CLEE HILL, CLOWSTOP, BAYTON, MAMBLE, ROCK,  
FAR FOREST, CALLOW & BEWDLEY.

Also selling many other items

Telephone: 01584 891550

EMAIL [n.bowden30@gmail.com](mailto:n.bowden30@gmail.com)





### Business in South Shropshire

As regular readers will know, I have put supporting a healthy local economy at the heart of my work locally. So I am pleased that since 2010, the unemployment claimant count in South Shropshire has more than halved, and average wages have increased by £50 a week. There is no question that putting in place a strong economic plan, with the right conditions to allow business to thrive, is creating jobs and making life easier for local families across the Ludlow Constituency.

So I welcome cuts in Corporation Tax from 28% to 17% by 2020, and efforts to expand export markets, through the new Department for International Trade. Many local businesses already have a thriving export business, and I encourage those that do not to visit the new department's website, at [www.gov.uk/government/organisations/department-for-international-trade](http://www.gov.uk/government/organisations/department-for-international-trade), to find free information and advice on how to develop exports.

But I am aware of the challenges some South Shropshire businesses are facing from the current business rate review. Revaluations usually happen every five years, which allows business rates to be adjusted to reflect changes in the property market across England. The last revaluation came into effect in 2010, based on valuations in 2008, so it is not perhaps surprising there will be some significant changes. Rateable values are linked to the open market rental value, as estimated by the Valuation Office Agency independently of government.

The most recent revaluation comes into effect from this April under which nearly three quarters of businesses in England, including the majority in South Shropshire, will see no change or even a fall in their rates. This is due to the Government introducing a permanent 100% increase in rate relief

for small businesses – so from April this year, businesses with a rateable value of £12,000 or less will pay no business rates at all.

But in South Shropshire some businesses located in areas where rents have been increasing (e.g. Ludlow town centre), and some dependent on property (such as equine businesses with stables), with rateable values above this threshold (or the £15,000 taper threshold) are facing unexpectedly significant rises. This can be due to estimates made by the Valuation Office of increasing rents in the area or assumptions about the profitability of the business. It seems these assumptions may not reflect the reality on the ground.

I have met traders to discuss this and am concerned about the fairness of some of these proposed increases, as South Shropshire seems to have been disproportionately affected. So I have raised this issue with the relevant Minister and the Valuation Office Agency. I have also written to the Chancellor to make him aware of my concerns.

Meanwhile, I am urging affected businesses to consider appealing the Valuation Office Agency's valuation to provide actual rental and other evidence. This can be done online, at [www.gov.uk/correct-your-business-rates](http://www.gov.uk/correct-your-business-rates). Unsuccessful appeals can be also challenged at Tribunal at no additional cost, with more information available at [www.valuationtribunal.gov.uk](http://www.valuationtribunal.gov.uk).

South Shropshire's economy is growing, but attempting to levy unsubstantiated rates increases on some businesses has the potential to put jobs at risk and slow our long term growth. So I will continue to work with local traders to press for fairer taxes for local businesses.

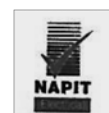
*Philip Dunne MP*



## Electrical & Security

**Tel: 07973 112463 (Anytime)**

**01299 489223**



- Full/ Part Installations
- Existing System Updates
- Alarm & Security Systems
- PAT Testing
- Domestic and Commercial Properties
- Electrical Problems

- Landlords & Electrical Safety Certification
- Upgrades
- Free Callouts and Quotes
- For Existing and New Installations and Security.

Part P + Full Scope Registration

Card Payments Accepted



**Fast Friendly Service, No Job Too Small**



# ALLTRADE WINDOWS

## UPVC SPECIALISTS

- Windows/Double Glazing Repairs
- Conservatories
- Composite & Upvc Doors
- Bi-Fold & Tri-Fold Doors
- Sliding Patio Doors
- French Double Doors
- Garage Doors
- Fascia Boards & Guttering
- All work guaranteed/30yrs experience

FREE  
QUOTES



Ring John: 07846460141

### Birthday Parties Holiday Activity Days

**Climbing / Abseiling**  
**High Ropes**  
**Raft Building**  
**Zip Wire**  
**Big Bounce**  
**Challenge Course**  
**Indoor Caving**  
**Ask about others**



**Tel: 01299 271217**  
**Enquiries@pioneercentre.org.uk**



**Minimum Age 8yrs**

**90 minute Session**  
**£11 per person**  
**Minimum 10 people**

**3 hour Session**  
**£20 per person**  
**Minimum 10 people**

**Hire a room for an hour**  
**After your session**  
**To cut the cake etc £15**

## T.PREECE TIMBER BUILDINGS LTD

The Old Station Business Park - Bridgnorth Rd - Cleobury Mortimer - DY14 8SY  
Custom Built Log Cabins & Timber Framed  
Mobile & Permanent Homes

Garden Buildings-Home Offices-Garages-  
Glamping & Shepherds Huts



01299 272801 - 07970078336 - [www.tptimberbuildings.co.uk](http://www.tptimberbuildings.co.uk)

## **On the Market - Anne Pyatt's Cosy Kitchen**

She offers a range of tasty treats on her market stall, that look good and sell well. Nothing about Anne's appearance prepares you for the news that her regular job is in engineering. She's a sales estimator for a castings company in Walsall, with a degree in Industrial Information and Technology.

Why engineering? "Both my granddads were engineers and my dad's an electrician," she explains. So it's obviously in her blood.

"I was always in the kitchen, from the age of about ten. I cooked for 100 as a special favour at a friend's wedding last year. It was mad, I'd just moved into a new place and in six weeks hadn't really learned my way around the kitchen." If she can rise to a challenge like that, she must know her catering stuff very well.

So here she is in Cleobury Mortimer, with an array of brownies, jam tarts, spicy scones, quiches, biscuits and other special treats. "It's all home made, including the jam in the tarts. I do lots of baking, raising money for charity, and I fancied trying something

different as a future business development."



*Anne breaks off from our chat to serve a customer with a smile.*

It's interesting to hear that she doesn't offer her full range here, to prevent clashing with others selling cooked dishes. That's a tribute to the thoughtful management of the event; you don't find rival traders cutting prices of the same type of product. She did have apple and plum tarts when the doors opened, but they'd sold out by the time we got there, which says something about their appeal. The steady stream of buyers she dealt with suggests that what comes out of her kitchen has a strong appeal.

It's not an easy road she's chosen to follow, holding down a responsible full-time job five days a week, then cooking up stock for whichever market she's going to over the weekend. All with local ingredients when they're available; when she gets the garden of her new home sorted out, she'll include home grown on the menu in the summer. And when she needs a quality cooking oil, she uses one from fellow stall holders Bennett and Dunn.

Anne likes Cleobury's market, which she finds friendly and well run. "It's easy for me to get to from Wolverhampton," she says. "It's 26 miles and takes me about half an hour to get here. It's eight miles to my work in Walsall and that takes about the same time in the morning." She will add other venues in time, but Cleobury is well established as a favourite with her.

What does she do in her spare time, if such a busy lady can find any?

"I do local charity work. I'm a trustee of Pride in Pennford, that does cooking for and helping local old people."

Try her tastes for yourself, but get in early before she sells out.



## NJ Plumbing & Heating

All aspects of domestic plumbing:  
bathrooms-kitchen-showers-central heating  
Oil boiler servicing



Phone 01299 270175

Mobile: 07967 659624

## Firewood

Seasoned logs, barn dried & ready to burn.  
Free local delivery -01584 890993 or 07970878224  
Various size loads available



Paul Harding Tree Services



## Stewart Mumford Architectural Services Bespoke Architecture

Great value personal service backed up with extensive local knowledge, established links with other construction professionals to ensure comprehensive packages specifically tailored to individual needs.

Initial consultation free of charge.

Specialist in Works to Listed Buildings, Affordable Houses, Open Market Houses, House Extension and Alteration, Barn Conversion and Commercial Projects.



T: 01299 271068

M: 07977 921039

E: office@stewartmumford.co.uk

## Posh Potties Luxury Designer Toilet Hire

A Family run business who specialise in the hire of :

Luxury Mobile Toilet Trailers and Refrigerated Units for outdoor events.

We have all types of Portable Toilets available to hire – from Plastic Portaloos to Large Luxury Toilet Trailers.

We can also provide Refrigerated Trailer Hire

Please visit our website or contact Emma or Chris on 01746 718518 / 07929 314020 for more information.

[www.poshpotties.co.uk](http://www.poshpotties.co.uk) Oreton, Cleobury Mortimer [emma@poshpotties.co.uk](mailto:emma@poshpotties.co.uk)



## THE END OF AN ERA AT THE LIVE



*As you'd expect at the Live, there was a great spread. From left: Di Burch, Ian and Chris Ferguson and Emma Burch.*

It's the most charismatic pub in the area, clinging to the steep hill out of Neen Sollars and still in business as hundreds of pubs have closed. And for close on 35 years it's thrived under the care of the Parkers and Fergusons, who have built a fine reputation for food. And at the end of January they handed over to mum and daughter team Di and Emma Burch, with the pub rammed full and the kitchen flat out to feed the horde.

Di has worked in the kitchen at the Live and more recently at

the Fighting Cocks in Stottesdon. Now she has her own pub and will keep it much as it is apart from some changes to the decor to make the place more light.

When we called on February 1st to deliver the Clarion they were all hard at work, the team swelled to three with Di's mum Mary on the paintbrushes. The place was closed for a few days but was soon open again and as welcoming as ever.

Our thanks to the Parkers and Fergusons for making the place such a success and our very best wishes to Di and Emma.

## 50 MILE BIKE RIDE FOR CHARITY

Steve Mason and Jonathan Lloyd are working together to raise funds for two charities: The British Heart Foundation and the Juvenile Diabetes Research Fund. Both have a target of £500.

On May 14th they'll ride the 50 mile Cotswold Challenge on bicycles, both with good reasons for doing it. They have both lost family members with heart problems and Steve's daughter has Type 1 diabetes. You can pick up a sponsorship form at the Blount Arms or go online to:

[www.JustGiving.com/s-mason2jdr](http://www.JustGiving.com/s-mason2jdr) for the diabetes fund

or [www.JustGiving.com/s-mason3bhf](http://www.JustGiving.com/s-mason3bhf) for the heart foundation.

## FRIENDS MEETING

The Friends of Saint Mary's Church Annual General Meeting will take place in The Market Hall on Wednesday March 8th at 7.00 pm.

An opportunity for you to hear reports on last year's events and details of events planned for this year, plus the election of members of the committee. All are welcome. *Alec Osbaldiston*

## THANK YOU

The Trustees of the Nightingale Nursing Fund would like to say a special thank you to all those involved in the Sunday League together with Roger Gittins for the super donation of £755.00 for the fund. The fund is there to be used when there is a need for extra medical care within the home.

Due to confidentiality we rarely know who is receiving care that the fund pays for but I can say that it has been used to put care into the home several times recently. We are truly grateful when we receive any donations. Thank you once again. *Rosemary Abbiss*

## SILLY BIT

**"No man's life, liberty or property is safe while the legislature is in session."**  
(Mark Twain, 1886)



**LACON CHILDE SCHOOL**

the future begins here

Headteacher: Darren Reynolds



Lacon Childe School, Love Lane, Cleobury Mortimer, DY14 8PE

Tel. 01299 270312

email - [admin@lacon-childe.org.uk](mailto:admin@lacon-childe.org.uk)

Date	Time	Details	Contact	Telephone
Wed 1 <sup>st</sup>	10.00	Walking for Health steps out from the Sports & Fitness Centre in Love Lane. PAGE 9	Mandy Smith	270 312
	8.00	Whist Drive at Doddington Village Hall	Sonia Pearsall	01584 890874
Thurs 2 <sup>nd</sup>		<b>GREEN WHEELIE BINS EMPTIED TODAY</b>		
	10.30	Rock Pathfinders gather at Worcester Woods Country Park to take a local walk. PAGE 9		
Fri 4 <sup>th</sup>	1.00	Lent Lunch at the Market Hall, proceeds to Christian Aid. PAGE 57		
Sat 4 <sup>th</sup>	8.00am	Sale of household goods and furniture at The Knowle Sports Ground, on the Cleve Hill to Tenbury road.	Audrey Taylor	01584 890644
Sun 5 <sup>th</sup>	10.00am	CMFA Parish Walk starts from the Parish Church. Newcomers made very welcome		
	6.00	The first Open Mic Night at the Kings Arms, Church Street. PAGE 5		
	7.30	Big Quiz at the Sports & Social Club, Love Lane. PAGE 11		
Wed 8 <sup>th</sup>	10.00	Cleobury Coco offer one of their fine Coffee Mornings in the Market Hall, with home-made cake and tea or coffee.	Catherine Evans	CM 270647
	7.00	Annual General Meeting for the Friends of St Marys Church will be held in the Market Hall. Open to all members of the public		
	7.30	Neen Savage W.I. meet at the Village Hall. PAGE 25		
	8.00	Cleobury Royal British Legion gather at the Bell Inn, Lower Street.	David Taylor	CM 270793
Thurs 9 <sup>th</sup>		<b>BLACK WHEELIE BINS &amp; RECYCLE BOXES EMPTIED TODAY</b>		
	7.30	Cleobury Local Joint Committee at the Medical Centre, with emphasis on health & welfare. PAGE 57		
Fri 10 <sup>th</sup>	1.00	Lent Lunch at Market Hall. PAGE 57		
	8.00	Bingo Night at Doddington Village Hall	Sonia Pearsall	01584 890874
Sat 11 <sup>th</sup>		Social Saturday for Neen Savage W.I.	Sandra Dodd	CM 271563
Mon 13 <sup>th</sup>	10.00am	World War One committee meet in the Market Hall. PAGE 17		
	8.00	The Horticultural Society meets at the Methodist Hall in Church Street. Adrian Leonard speaks about "Wild flower planting"	Flo Hadley	CM 271762
Tues 14 <sup>th</sup>	7.30	Dr Mark Baldwin speaks about the German "Enigma" coding machine at Lacon Childe School. Tickets £4.00 PAGE 11	Judy Sant	CM 270983
	7.30	Borders historic Commercial Vehicle Club meets at Ludlow Brewery, next to the railway station		
Wed 15 <sup>th</sup>	10.00am	Walking for Health are out again, starting from the Sports & Fitness Centre	Mandy Smith	CM 270312
	8.00	Whist Drive at Doddington Village Hall	Sonia Pearsall	01584 890874
Thurs 16 <sup>th</sup>		<b>GREEN WHEELIE BINS EMPTIED TODAY</b>		
	10.30	Rock Pathfinders meet at Rock village Hall for their AGM and then take a walk. PAGE 9		
Fri 17 <sup>th</sup>	9.30am	Open Morning at Moffat School, Kinlet. Tours conducted by the children.	Details	01299 841230
	1.00	Lent Lunch at the Market Hall for Christian Aid. PAGE 57		
	7.00	Big 70's and 80's disco at Kinlet Village Hall, in support of Trust Lewis. PAGE 57		
	7.45	Big Quiz at Rock Village Hall, raising funds for Air Ambulance. Bring your own drinks and nibbles. £2.00 a head to enter		
Sun 19 <sup>th</sup>	12.00 noon	Spring Wedding Fair at Detton Hall. PAGE 25		CM 271832
	7.30	The Friends of St Mary's present The Birmingham Philharmonic Orchestra in concert in the Parish Church. Always a popular event, which suits the acoustics of our lovely old town centre of worship. PAGE 57		
Wed 22 <sup>nd</sup>	10.00	Cleobury CoCo are at the Market Hall again, offering one of their Coffee Mornings	Catherine Evans	CM 270647
	7.30	Clows Top Garden club meet at the Victory Hall to hear Michael Hardwick talk about Spetchley Park & Gardens. PAGE 7	Marion Wilson	CM 270475
Thurs 23 <sup>rd</sup>		<b>BLACK WHEELIE BINS &amp; RECYCLE BOXES EMPTIED TODAY</b>		



# Mannerly Mutts



## Dog Behaviour, Training, Walking and Sitting

 Behavioural Consultations
  Fully CRB Enhanced Checked

 Training Classes for Puppies & Adults
  Walking, House Sitting, Home Boarding

 One to One Training
  Home Security

[www.mannerlymutts.co.uk](http://www.mannerlymutts.co.uk)  
[jo@mannerlymutts.co.uk](mailto:jo@mannerlymutts.co.uk) 01299 270514



Fri 24 <sup>th</sup>	1.00	Lent Lunch at the Market Hall, for Christian Aid. PAGE 57		
Sat 25 <sup>th</sup>		Coach trip to Birmingham, stopping to pick up in Cleobury. PAGE 5		
	7.30	"Flicks in the Sticks" at the Parish Hall offers "Eddie the Eagle"		
Thurs 30 <sup>th</sup>		<b>GREEN WHEELIE BINS EMPTIED TODAY</b>		
	7.30	Open Mic Night at the Sports & Social Club, Love Lane. PAGE 11		
Fri 31 <sup>st</sup>	1.00	Lent Lunches at the Market Hall. PAGE 57		
	7.30	Annual General Meeting of the Footpath Association, Bell Inn, Lower Street		
	8.00	Bingo Night at Doddington Village Hall	Sonia Pearsall	01584 890874
		AND LOOKING FORWARD TO APRIL.....		
Wed 5 <sup>th</sup>	10.00am	Walking for Health starts from the Sports & Fitness Centre, Love Lane	Mandy smith	CM 270312
	8.00	Whist Drive at Doddington Village Hall	Sonia Pearsall	01584 890874
Thurs 6 <sup>th</sup>		<b>BLACK WHEELIE BINS &amp; RECYCLE BOXES EMPTIED TODAY</b>		
Fri 7 <sup>th</sup>	1.00	Final Lent Lunch at the Market Hall. LAGE 57		

## GET YOUR EVENT LISTED IN OUR BUSY SOCIAL CALENDAR

It's very easy, costs you nothing and you reach something like 2,000 readers.

Just send details to the editor, by post or email - see Page 63 for those details.

We need the event title, date and opening time, contact name with telephone or email details and a brief description of the event. We will give you an entry in these calendar pages and possibly a mention in the editorial pages, subject to space being available. And don't leave it until the last minute - the calendar pages are put together by an outside contractor who works ahead of the normal press deadline, so we suggest you get your entry in by the 20th of the month before publication. And finally, please be brief. Waffle and repetition are always removed, because space on these pages is precious and we will not waste it. Help us to help you.

## Wild Meadow Boarding Kennels

Give your dog a holiday



- Guaranteed Daily Walks
- Heated & Air Conditioned
- Licensed & Insured

**Call Kate & Rich on 01584 890327 or 07967 491428**

Opening hours: 8am-11am & 4pm-6pm

Hopton Bank, Cleobury Mortimer, DY14 0QF



## First choice for all your motoring needs



- NEW FORD CAR AND VAN SALES
- APPROVED USED CAR AND VAN SALES
- ALL MAKES SERVICING AND MOTS
- PARTS AND ACCESSORIES

- CONTRACT HIRE FOR BUSINESS
- CAR AND COMMERCIAL RENTALS
- SELF STORAGE FACILITIES
- MOTABILITY AGENTS



169-171 Newtown Road, Malvern WR14 1PJ  
**01684 212361**

Worcester Road, Kidderminster DY10 1JB  
**01562 549836**



Spring Lane South, Malvern WR14 1AT  
**01684 212428**

brookhire.co.uk  
hillsford.co.uk



Worcester Road, Kidderminster DY10 1JB  
**01562 549725**

hillscontracts.co.uk  
hillselfstore.co.uk



Spring Lane South, Malvern WR14 1AT  
**01684 210530**

Worcester Road, Kidderminster DY10 1JB  
**01562 549716**

watch | like | tweet   

## HIS & HERS Dog Grooming Parlour

All breeds and  
Cross breeds professionally  
Trimmed and Groomed



**J. A. Guest**

**Tel: 07790 796 027**

## David Ward firewood

Do you need a dependable consistent quality  
supply of Hardwood and Softwood Firewood?  
Cut & Split to suit and delivered in breathable  
1.2 cubic metre bags so no need to restack.

Small delivery vehicle fitted with  
crane can deliver to most situations.

David is happy to discuss your requirements.

Mobile: 07866 441154

email: david@dskw.co.uk

## Ever After

- Breakfast club
- After school club
- Holiday club
- "Forest schools" outings



- 15hrs education funding
- 24U funding
- Age ranges: 3 months to 11 years

**Day Nursery**

Cleobury Mortimer

Please contact us on 01299 272 777

Or Call in to see us anytime.

Friendly, Caring Environment for the Community

## Alan Smith Aerials

### Digital TV Installations.

**Freeview** aerials fitted and distributed around the house.

**Freesat** box, dish, and cable supplied and fitted. One off payment, **No contract or subscription required.**

Extra points, Repairs, New fits, Set ups, Multi room.

All work is carried out by a **Local**, fully qualified and insured installer.

**01299 270007 or 07970 675728**





I have been trying to get out and about around Cleobury as much as possible over the last few weeks and only intend to increase this as the nights get lighter. If you see me out on patrol please come and say hi.

This month I took part in a walk around Cleobury with members of the crime reduction group and discussed possible new locations for CCTV. It is hoped that this application will be approved and will increase the capabilities of what is already a very good CCTV system. This system has been used recently and was able to provide evidence for an act of vandalism which occurred within the town.

I would again ask residents to remain vigilant regarding cold callers. Please be wary of who you open your door to and report anything you feel is suspicious to the police.

Parking and speeding around the town centre continue to be brought to police attention although it is rarely reported. Should you witness anti social driving in or around the town and are able get a registration number then it may be possible for police to take retrospective action. This should be reported via 101 at your earliest convenience.

It has been reported in Neen Sollars that there is excessive mud on the road. This time of year it is appreciated that this is hard to counter but people who deposit mud on highways are under a legal obligation to clean this up. Failure to comply with this could lead to possible criminal proceedings and heavy fines. You could also potentially find yourself liable for damages and personal injury claims.

I am still finding my feet with this role and I'm currently trying to increase my local knowledge of Cleobury and the surrounding areas. You may see me on rural patrols as I am trying to get out to even the most rural locations. Should you feel there is an area which I may not have visited but there is a local issue that requires my attention, please get in touch. The safer neighbourhood team and I try to attend as many community events as possible and are always happy to help where we can. If you are organising a community event and wish to get in touch please contact [ch.snt@westmercia.pnn.police.uk](mailto:ch.snt@westmercia.pnn.police.uk). If you wish to report a crime please use the 101 service or in emergencies 999

*Liam Jones*

## INFINITE ELECTRICAL SOLUTIONS

For all your electrical needs:

House rewires

Fuse board upgrades

Electric showers

Need an extra socket or light installed?

No job too small

For a FREE quote

Call Lloyd 01584 811184





## More Clarion Smalls



### Domestic oil-fired boiler breakdown & maintenance services.

27 years' field-service experience with leading UK boiler manufacturer Worcester Bosch.

**Donovan Taylor**

**Tel: 01299 828670 or 07807 837040**

[donovan.taylor@sky.com](mailto:donovan.taylor@sky.com)

[www.greenstar-boiler-repairs.com](http://www.greenstar-boiler-repairs.com)

Caring about your environment and providing an honest, professional & reliable service you can trust



### Jet Washing Services

We clean and restore outdoor surfaces at an affordable price.

- Decking
- Patios
- Brickwork
- Driveways
- Fences
- Outdoor furniture

For a free quote call Luke on 07443 039608, or email [shropshiredirtblasters@gmail.com](mailto:shropshiredirtblasters@gmail.com)

## FALCO HEATING

The Solid Fuel Specialists

**GARY HARDING - HETAS registered**

Old Hall Farm

Clows Top

Worcs. DY14 9HE

**T: 01299 832030**

**M: 07896 685 947**

**FALCO HEATING@BTINTERNET.COM**

**WWW.FALCOHEATING.COM**



**A.B. Plastering**  
Plus Traditional Lime Plastering

**Adrian Booton**  
**PLASTERER**

4 Severne Green, Bayton  
Nr Kidderminster, DY14 9LL

**Tel: 01299 832 838**

**Mobile: 07974 582 524**



Soft furnishing and  
Interior Design Services

**Masquerade**  
Fabrics Limited

**01299 271 680**

36 High Street Cleobury Mortimer near Kidderminster  
Worcestershire DY14 8DQ

Retailers for Sanderson, Harlequin, Monkwell  
Crowson and many more...

Comprehensive design, measuring and fitting service.



**Natalie Taylor** Dip CFHP MPS Pract.

**Specialist Foot Health Practitioner**

Specialising in:-

- In-growing toenails
- Fungal infections
- Nail trimming
- Verrucae
- Calluses
- Corns

All from the comfort of your own home.

If you would like to make an appointment,  
please call on **07779 113982** or **01584 890112**

## Hammered 'n' Plastered

Professional Plastering & Carpentry Company

[enquiries@hammerednplastered.co.uk](mailto:enquiries@hammerednplastered.co.uk)

**07957166364**



[www.hammerednplastered.co.uk](http://www.hammerednplastered.co.uk)

**B & W SPRAYTANS**  
**Mobile Spray Tanning Service**

**Sienna X**

**Fake Bake**

**Skinny Tan**

**For information and appointments**

**call: Bev 07977 863 799**



Thank you to everyone who responded to the Shropshire Bus Strategy consultation. All responses have been sent off to County Hall and we shall see what the outcome is in due course. It will be interesting to see what the results are and I would like to know exactly who makes the decisions on how many points to allocate to the various criteria and whether they will all be based in Shrewsbury. Your guess is as good as mine on this.

Regular breakdowns continue with one friend being inconvenienced as he normally takes the early bus into Ludlow, leaps off at Tesco on the way in and has time to get his paper and odd bits of shopping before the bus gets round to start the return journey. The other Saturday it didn't come back round having broken down in the 'Ludlow Triangle' so he had to be rescued. Another regular traveller also bound for Ludlow had nearly given up waiting when the bus appeared about 20 minutes late. It then struggled as far as Clee Hill before expiring in a cloud of steam. Interestingly, the driver commented on what a good view there was – presumably after the steam had cleared. After waiting for a while to cool, the journey then continued although I don't know whether it got back again OK.

The results of the West Midlands Traffic Commissioners Public Enquiry into Diamond's performance held on 30 November last year have now been released and Diamond management will be quaking in their shoes. Not with fear but with laughter as they merely received a formal warning and had their application to increase their number of vehicles from 228 to 323 temporarily scaled back to 275. Their performance will also be monitored for the next six months by the DVSA (Driver and Vehicle Standards Agency). That'll show 'em! This is despite the Traffic Commissioner saying 'I am clear, that on too many occasions,

the company's service has fallen far short of the required standards' and using words such as 'appalled' and 'abysmal', to describe Diamond punctuality and customer service. He also spoke of poor timekeeping, breakdowns, running out of fuel, not stopping at bus stops etc and one case where a customer suffered two breakdowns on the same trip.

The managers concerned were also told that their 'good reputé' (!) would not be adversely judged. Makes you wonder what they would have to do to merit real punishment (mass murder perhaps?). Sadly, I think this is a classic example of one of these numerous (and expensive) Government Quangos talking a good job but not delivering when action is needed.

Diamond responded by promising to do better in future (sound familiar?) saying that their punctuality performance was currently running at 91-92% compared with the Traffic Commissioners target of 95%. They expressed their gratitude for the sympathetic treatment they had received (as well they might) and said they would work with stakeholders in adjusting timetables if necessary to combat the threats of worsening traffic congestion. They also said that they were investing £600,000 in modern ticket machines which would begin to be installed from April. Most of us would prefer them to spend the cash on better buses.... (Having mentioned better buses, there may be something on this to report next month – watch this space).

Moving on to the 'already used that one' section, should Diamond want to ditch the 2L, they will have to think of a better excuse than Arriva Buses. When a delegation of Councillors asked the German owners of Arriva why they had scrapped a profitable route in Kent, they got a one word response – 'Brexit'...

*Steve Todd*

## More Clarion Smalls

Health Professional  
Registered Chiropodist



**Janet Manley**

MSSCh., MBChA  
BSYA(reflex) Reiki Master

Specialist in Reflexology & Reiki Healing

Cleobury Mortimer based      **01299 272841**  
Home visits 15 mile radius      **07805 268439**

**D Painter - Painting and Decorating**  
Your local friendly Painter and Decorator.

**Ex British Forces professional,**  
**hard working and reliable.**

**Free quotes, reasonable rates,**  
**no job too small.**

**Please call Darrell:**  
**01299 271838 or**  
**07854 770 604**

**Terence Montague**

Interior and Exterior  
Painter and Decorator



**Stottesdon**  
**01746 718 742**  
**07787 124 304**

**Washing Machine**  
**Repairs and Sales**

**JULIAN BREAKWELL**

**Telephone 07791 633 746**

**Repairs to all makes, including**  
**Bosch, Hoover, Zanussi and**  
**Hotpoint**

**NO CALL OUT CHARGE**  
**FIXED LABOUR COST**

**SIMON CARTER**

**PROFESSIONAL PAINTER AND**  
**DECORATOR**

**PLASTERING, TILING, COVING AND**  
**GLAZING**

**5 LOVE LANE, CLEOBURY MORTIMER**

**TEL: 01299 272868**

**MOBILE: 07815 483 029**

**KNOWLE SPORTS SALES**

**Tenbury Road, Clee Hill.**

**8.00 to 11.00am**

**The First Saturday of**  
**Every Month**

**STILL WANTED: Good clean donations.**

**Collections: 01584 891249**

**Enquiries: 01584 890644**

**Seasoned Oak Logs For Sale**

**Free Local Delivery**

**Also Mixed and Softwood Available**

**Tel: 07976 895 267**

**01584 890 795**

**K Phillips & Son Groundwork**

**E: [kphillipsandson@yahoo.co.uk](mailto:kphillipsandson@yahoo.co.uk)**

**Piano tutor**  
**Francis Engleheart**

School-aged or adult  
students, beginner or  
advanced. Based in Kinlet,  
but I can come to you.  
Some day and after-school  
spaces available.

07710 288526 • [fengleheart@hotmail.com](mailto:fengleheart@hotmail.com)

## **THE FOOD AND ALE TRAIL**

The Executive Committee of the Footpath Association has taken the decision to postpone the Food and Ale Trail until 2018.

To build on the plans already made we are looking for a few more volunteers to take on roles of responsibility and join us in taking the event forward.

The FAT will be one of the subjects for discussion at our members meeting on Friday March 31st, 7.30pm at The Bell.

## **THE HORTICULTURAL SOCIETY**

We were entranced by the enthusiasm of our February speaker Joe Hawkins, who is in charge of the restoration of Hagley Hall Park. He was a gardener at Shugborough and worked his way up to be head gardener and then was invited by the Lyttleton family to come and help restore their landscape garden. Hagley Hall was the last of the great Palladian houses to be built, begun in 1754 and finished in 1760,

When Joe began to work there the park was very unkempt and he began by researching how it had been originally, using old pictures and books that he was able to borrow plus visiting

libraries and other big houses, finding other works by the designer Sanderson Miller.

By excavation and clearing he has uncovered ponds and cascades and has restored a lot of areas to their former glory. There is still a lot to do and he keeps uncovering parts of the original landscape, but the park will eventually be as good as it was when first designed.

Our next meeting is on March 13th when we will be listening to someone from the Wyre Forest Parks department telling us about their wild flower planting.

*Liz Smurthwaite*

## **NEWS FROM COCO**

Cleobury Compassionate Communities has been working quietly in the background for a while, but this month we have some news. Firstly we wish to thank the Bell's Sunday Darts and Dominoes League for another kind and generous donation to us, which will go a long way to supporting our befriending project through the coming year. A website has been a long time coming, but we have now decided to use some funds raised, to have local company Glint Print design us a site, with a view to gaining more volunteers and growing beyond

the current number of 25. And finally, on the back of the great success of last year's Afternoon Tea & Dance for the community, CoCo is this year joining hands with the team at our Severn Hospice shop to put on another similar event on Sunday May 7<sup>th</sup>. So save the date and watch this space for more details next month.

*Katja Jones*


## **CLEOBURY'S SWIFTS**

The Swifts of Cleobury will be back with us again for their breeding season from early May until late July. Last year there were about 13 breeding pairs, accompanied by around 10 of the previous year's juveniles.

How many will arrive, where will they be nesting and what can we do to encourage these wonderful birds?

Ludlow and Bishop's Castle have established Swift Groups and are happy to share their expertise with us. If you or anyone you know is interested in Swifts, please do contact me, and let's see if we can start our own Cleobury Swift Group before our birds arrive in early May.

Kit Smith 01299 272679  
[worthpack@aol.com](mailto:worthpack@aol.com)

 **07951-329664**  
**01299-271280**  
**01299-271531**

# **P. W. TYRES**

## **Mobile Tyre Fitting Service**



### **WE COME TO YOU AT HOME OR WORK!**

**Tyre Change & Balance**  
**Puncture Repairs**  
**Batteries**

**Wheels Powder Coated**  
**from £35-00**

**Rim Bands all colours**

**\* 7 day service \***

**Nitrogen Filling**  
**Experts**



**Locking Wheel Nut Removal**

### **DOMESTIC GODDESS HOME SERVICES**

I will tackle any job with care and pride!  
I specialise in general household chores  
and de-cluttering of homes.

I am very reliable.

CRB checked - References available

**Contact Julia anytime on  
07867646574/01299 832297**



### **Home from Home Animal Sitters**



•Dog walking

•Pet sitting and holiday cover

•Farm animals & smallholdings

•Horses, including mucking out, feeding & exercising

Professional, experienced & caring service. Insured & DBS checked.

Email: [homefromhomeanimalsitters@gmail.com](mailto:homefromhomeanimalsitters@gmail.com)



**Tel: 07714464537**

Web: [homefromhomeanimalsitters.my-free.website](http://homefromhomeanimalsitters.my-free.website)



## **M D Taylor**

**Kitchens/Bathrooms**

**Fully Fitted**

Including all electrical,  
plumbing and tiling.

**Call David on 01299 832903  
or 07973 848618**

## **ALAN PRICE DIRECT TRAVEL**

**PRIVATE  
HIRE  
TRAVEL**

**AIRPORT  
TRANSFERS**

**LOCAL &  
LONG  
DISTANCE,**



**COURIER  
SERVICE**

**FRIENDLY &  
RELIABLE**

**FULLY  
COUNCIL  
LICENSED**

**Tel: 01584 890014  
MOBILE: 0773 3079679**

A Mini Box Small Ad like this costs just  
£16.00 for six months or £30 for twelve.  
A good way to test how well the Clarion  
can work for you.

t. 01299 823 986  
m. 07467 946 087

[www.rewyreelectrical.co.uk](http://www.rewyreelectrical.co.uk)

@rewyreelec

## **ReWYRE electrical**

- EMERGENCY CALL OUT SERVICE
- ALL ELECTRICAL SERVICES OFFERED
- FREE NO OBLIGATION QUOTE

Domestic & Commercial Electrical Services

We are fully accredited and supported by:

## **E.PURSLOW & SON LTD**

**Stone, Gravel, Cement Supplies**

**Approved Coal Merchant**

**Calor Gas Stockists**

**Tarmacadam Specialists**

**Car Parks and Driveways**

**Constructed.**

**TEL: 01299 270314**



## **LES HALL**

**◀Window cleaning service▶**

**01746 861752**

*—Established 1986—*

### **Local Piano Teacher**

Lessons for RSM Grades or Just for Fun.

Any Age Welcome, it's never too late to learn.

Reasonable rates

Please contact Wayne for availability

**01299 266150**

**Computer and Laptop**

**Repairs.**

**No fix No fee**

**CCTV & Access Control**

**Jenpac ICT Solutions**

**01746 860297**

**[www.jenpac.co.uk](http://www.jenpac.co.uk)**

**Established 2005**

## **Electrician**

Indoor/Outdoor Lighting Specialist  
Repairs and Installations

No Job Too Small, Reasonable Rates

For an Honest and Friendly Service Please Call Mathew

Part P

Approved

**Tel: 01584 711553**

**Mob: 07974 638045**





## March in the Wyre Forest

Linda Iles

At this time of year two of our less spectacular trees bring out their flowers. First is the blackthorn, which is the first hedgerow tree to blossom; the white 5-petalled blooms springing straight from dark twigs unadorned with new leaves. Left to its own devices blackthorn will produce a thicket of suckers well-armed with long, sharp spines. Marching out across woodland edges or unmown fields they provide protection for other shrubs and trees, earning the French name *mere du bois* (mother of the woods). The leaves follow in April and the fertilised flowers become sloes, whose purple/black skins are dusted with a fine bloom of wild yeasts. The best sloe patch I know of was thrashed mercilessly by an overzealous hedge trimmer last year so we'll see whether the blossom appears as copiously this spring.

The other tree is the yew. Whereas the blackthorn is small and somewhat transient the yew is solid, dark and capable of achieving a great age. In the Wyre Forest yew trees are well represented and may have served as boundary markers in some cases. The wood is certainly very hard and would probably not be worth the effort of felling.

It is hard to estimate the age of a yew tree, as they are slow-growing and often start to become hollow after a few hundred years. They are very often found in churchyards, but which came first? The Fortingall yew in Perthshire is reckoned to be between 2000 and 3000 years old but if you would like to see a much closer example of a venerable yew there is a hollow tree of 30 feet circumference, complete with bench inside, in Much Marcle churchyard, featured in Thomas Pakenham's *Meetings with Remarkable Trees*. Even nearer is the huge yew in Hope Bagot churchyard just

below Clee Hill. The tree stands just above a holy well. Judging by the age of these ancient specimens it seems likely that they were revered in pre-Christian times and that the sites for church-building were chosen accordingly.

The yew, like the holly, is either male or female ('dioecious' is the proper word for this trait) and the flowers of each are fairly inconspicuous: small greeny-yellow tufts on the undersides of the leaf shoots. The male flowers shed clouds of pollen which are carried to other trees nearby and pollinate the female flowers there. Although a primitive conifer, the fruit is not borne by a cone but is the familiar red berry, whose flesh is said to be edible as long as you avoid eating the seed inside. As an interesting aside, the Fortingall yew was noticed in 2015 to have produced several upper shoots bearing berries, despite being a male tree: it was in effect changing sex!

Linda Iles



*Much Marcle's remarkable yew tree.*



We control:

Insects Rodents  
Mammals Birds  
Electronic fly killers  
supplied & fitted

Mobile: 07890 048 362

**WYRE FOREST  
PEST  
CONTROL  
AND  
WILDLIFE  
MANAGEMENT**



All work guaranteed  
No call out charge  
Discount for O.A.P's  
Free survey and quotation

Office: 01562 747 210

[www.wyreforestpestcontrol.co.uk](http://www.wyreforestpestcontrol.co.uk)

# Cleobury Mortimer Golf Club

## The 3 Month Taster Membership

Enjoy the benefits of 7 day membership with  
our Special 3 Month Taster Package for just £150

45min Lesson with Amy Millward  
or David Pain Included.

The 3 Month Membership is for April, May and June

Terms and Conditions apply.

Voted the most picturesque golf course in Shropshire  
(Midlands Golf Magazine 2017)



Contact Dave or Tom on 01299 271 112 or  
email [pro@cleoburygolfclub.com](mailto:pro@cleoburygolfclub.com)



**Calling all business women living in the West  
Worcestershire / Wyre Forest area.**

Join our friendly group to network with like-minded business  
women.

Improve your skills, boost your confidence and get new business.

For more information, contact Steph :  
☎ 07895 623048  
Facebook: @wyrewirenetworking

We meet at the **Faded to Fabulous**  
Tea Rooms in Kidderminster  
10am-12pm  
on 2nd Thursday each month.

Join us for support, advice, great  
coffee and a chat.

Kim Stanley  
**HEALTH & BEAUTY**

0 1 2 9 9 2 7 1 8 0 0

Spraytan Non-Surgical Facelift Electrolysis Aromatherapy Waxing Reflexology  
Gel Polish Spa Find Facials Jessica Nail Care Hot Stone Therapy Hopi Ear Candling

**Enquire instore for full range of treatments available.** Kim Stanley  
IHBC - BABTAC

30 . High St . Cleobury

## REIKI

**Feeling Anxious, Stressed or Low ?  
Reiki Soothes, Relaxes and Comforts.**

[www.katejones-reiki.co.uk](http://www.katejones-reiki.co.uk)

**Tel. 01584 890284**

30 High St

Kate Jones

\* Over 20 years experience in Reiki (Reiki Master)

## PHYSIO

**Chartered Physiotherapist, Emmett  
Practitioner, Acupuncturist** (pain relief),  
Pain, Stiffness, Musculoskeletal Problems,  
Injury, Neurological Conditions, Lymphatic  
Drainage, Sinus Congestion.

**Tel. 07905 766729**

30 High St

Jill Sharp

SRP, MCSP, BSc(Hons)

Tel: 01746 861612

Amanda Horton Mobile Computer Services

Email: [mandhorton@gmail.com](mailto:mandhorton@gmail.com)

Text: 0796 461 4185

### OVERWHELMED BY TECHNOLOGY AND DON'T KNOW WHERE TO START?



- Email
- Social Media
- Researching family history
- Online Shopping

**I offer computer lessons and  
services in the comfort of your  
home and can walk you through  
at a pace that suits you**

Reasonable hourly rates

## CHARTERED BUILDING SURVEYOR

**Paul Rosevere MRICS, BSc (Hons)**

- FULL DESIGN SERVICE FOR BOTH DOMESTIC AND COMMERCIAL PROPERTIES
- NEW BUILD, EXTENSION AND ADAPTATIONS, LISTED BUILDINGS
- DRAWINGS, PLANNING PERMISSION AND BUILDING REGULATIONS
- TENDERING, PROJECT MANAGEMENT, CONTRACT ADMINISTRATION
- CONDITION SURVEYS, FAULT DIAGNOSIS, SCHEDULES OF WORK



**WE OFFER A PROFESSIONAL, LOCAL SERVICE.  
FOR FREE INITIAL ADVICE AND GUIDANCE CONTACT PAUL.  
Mob. 07882 804 229, Tel. 01299 270777**



## **EOS Contracting**

EOS are pleased to announce that we are now able to offer our professional tree services for domestic and commercial customers

Tree works undertaken include, but are not limited to:

Reductions—Dismantling—Pruning—Planting—Stump Grinding— Tree Surveys

Please feel free to contact us to discuss your requirements

TEL : 01531 650012 / 07772 751536

Email: [office@eoscontracting.co.uk](mailto:office@eoscontracting.co.uk)

PROUD SPONSORS OF THE CLEOBURY MORTIMER RUGBY CLUB



## **Luxury for your cat, peace of mind for you**

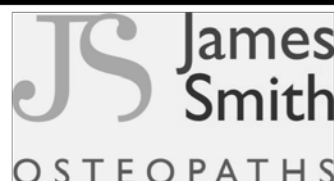
- Vaccinated cats only
- “cuddle time” spent with every cat, every day
- Individual likes & dislikes catered for
- Inspection invited
- The cattery of “First Choice”
- Tranquil environment
- Family units for cats from the same home
- Protected by security system
- Full height sneeze barriers
- Spacious, heated chalets
- Bright & airy
- Completely protected from the weather
- Spotlessly clean

Catsley View, Meaton Lane, Kinlet, DY12 3DD, call 01299 841 270

### **Registered Osteopath.**

Experienced with a wide range of injuries & medical conditions including :-

- |                                |                                   |                                 |
|--------------------------------|-----------------------------------|---------------------------------|
| • General aches and pains      | • Headaches arising from the neck | • Fibromyalgia                  |
| • Joint pains                  | • Circulatory problems            | • Sports injuries               |
| • Arthritic and rheumatic pain | • Lumbago                         | • Muscle tension and imbalances |
| • General back and neck ache   | • Sciatica                        |                                 |
|                                | • Neuralgia                       |                                 |



James works alongside Sue Brown at Cleobury Chiropractic in the High Street.

If you would like an early-morning or evening appointment then please call James on: 07506 287191.





# Looking for a new dental experience?

**W**ITH an independent five-star service rating, Cleobury Dental Practice is now opening its books for new people seeking a fresh 'going to the dentist' experience.

Two new NHS associate dentists have joined the team and there's plenty of opportunity to take more patients.

Situated in Talbot Square in this picturesque market town, the practice has continued to grow in popularity with its 'one-stop' approach to treatment.

Serving both NHS and private sectors, it offers everything from regular dental check-ups to intricate, highly-skilled dental implant therapies – all under a single roof.

And as for children . . . they get special attention with annual Tooth Fairy events, where her extraordinary clever apprentice helpers are only too eager to dress up and preserve the smiles of youngsters.

Heading up the team is Dr Ann-Marie Bard BChD PG Cert Den Ed GDC 71958. A Foundation Trainer for newly-qualified dentists within the West Midlands Deanery, her commitment to keep on the very cusp of dental development has seen her career develop as a dental mentor.

She is currently studying towards an MSc in Advanced General Dental Practice.

As a mother of two teenage daughters with ever-growing 'taxi' demands, she admits "life is far too busy," but quickly adds she'd have it no other way. "Being a dental mentor keeps me clinically sharp.

"We are continually evolving, but the science and skill of dentistry can become very abstract unless they are earthed in proper, professional practitioner/patient relationships. And that means getting to know those we care for," she says. Advances in science, medicine and technology are raising the bar of dentistry daily, she adds, but "there must be an

Building trust and discovering the dental aspirations of patients is what helps define our friendly practice



● Check out our dental implants online ● Interest-free finance

holistic approach to patient wellbeing to secure best possible outcomes."

"I am a people person and the associates I have need to be the same to fit in with the practice ethos," she says.

## Informed choices

It is now a recognised fact that creative thinking in dentistry must not only remain abreast of medical evolution, but equally, must focus on meaningful dialogue with patients and community.

"We are generous with our appointment times and

## — Services at a glance —

○ NHS/Private: Our NHS treatment provides everything necessary to maintain oral health, but the practice also offers alternative private therapies, such as cosmetic and implant dentistry.

○ General Dentistry: All aspects of general oral care are undertaken.

○ Implants: Our award-winning surgeon Neil Sampson MFGDP (UK) BDS (B'ham) GDC60624 has a long experience of advanced restorations and implant work.

genuinely want to get to know our patients as people. Building trust and discovering the dental aspirations of both new and old patients is what helps define our friendly practice alongside the comprehensive raft of therapies we deliver. Of course we treat dental problems, but our focus is treating people," she adds.

Call, or drop in and arrange a consultation. "We are non-judgmental, have a car park adjoining the practice and we're all very approachable.

"We're not interested in selling dentistry, but want to empower our patients with the knowledge for them to make informed choices," says Ann-Marie.

○ Clinical Dental Technician: No-obligation consultations with Chris Chawro Dip CDT RCS (Eng) GDC135208.

○ Orthodontics: Teeth straightening with our associate Laura Woods BDS(UK) GDC60634.

○ Hygiene therapy.

○ Practice Membership Plan: Get 20 per cent discount off routine treatments.

○ Nervous Patients: Conscious sedation can be used alongside all types of dental treatment.



For appointments & information call:

**01299 271747**

**Cleobury Dental Practice**  
5 & 6 Talbot Square, Cleobury Mortimer  
Kidderminster, DY14 8BQ

**W:** [www.cleoburydental.co.uk](http://www.cleoburydental.co.uk)  
**E:** [reception.cdp@telitmail.co.uk](mailto:reception.cdp@telitmail.co.uk)  
**FB:** CleoburyDentalPractice





## KINLET C OF E PRIMARY SCHOOL

Preparing for the future in a caring  
Environment



- Large field and playground
- Caring Ethos
- Broad and balanced curriculum
- Breakfast and Afterschool Clubs

[www.kinlet.shropshire.sch.uk](http://www.kinlet.shropshire.sch.uk)  
[admin@kinlet.shropshire.sch.uk](mailto:admin@kinlet.shropshire.sch.uk)  
Telephone: 01299 841210



NO TIME TO DO YOUR IRONING?  
SICK OF THE HASSLE OF YOUR LAUNDRY?  
LET ME, **THE IRON LADY**, JEAN BASHAM  
TAKE AWAY THE STRESS AND DO IT FOR YOU!  
A FULL LAUNDRY AND IRONING SERVICE  
ESTABLISHED FOR 15 YEARS  
THE **LOWEST RATES AND BEST SERVICE** AROUND!  
**CALL 01299 271 546 OR 07792 813 774**  
**EMAIL [JEANTHEIRONLADY@GMAIL.COM](mailto:JEANTHEIRONLADY@GMAIL.COM)**  
*"FROM CREASED AND MESSED TO CLEAN AND PRESSED"*

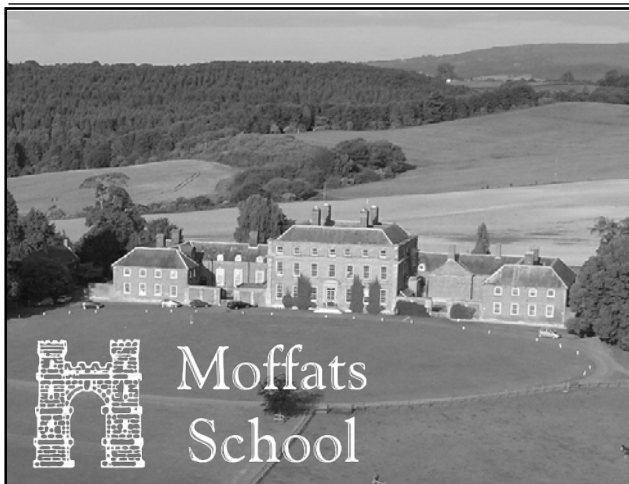
**M D Taylor**  
**Electrician/Plumber**  
**No job too small or too large**  
**NICEIC Registered**  
  
Call David on 01299 832903  
or 07973 848618



# A PROPERTY AND & GARDEN SERVICES M

**Quality work at competitive prices**  
*Covering Cleobury Mortimer,  
Tenbury Wells and surrounding areas*

Aaron 07825 159546 Mike 07813 512947 Email: [aaron9morris@icloud.com](mailto:aaron9morris@icloud.com)  
Check out photos of previous jobs - Find us on Facebook



## Thinking about your child's education?

Moffats, your local prep school, welcomes children from the ages of 3-13.

A happy family school in an exceptional setting.

Extras include riding in our 100-acre grounds.

Funded Kindergarten places: ages 3 & 4.

**moffats.co.uk • 01299 841230**

Kinlet Hall • DY12 3AY

On the B4363, 5 minutes from Cleobury Mortimer

## freshen up your living space...



## WE GLEAM

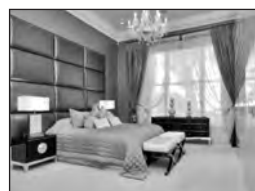
professional cleaners & re-upholsterers  
we don't just clean it...we gleam it!

we welcome all enquiries 07961 712 683

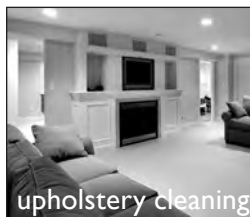
www.wegleam.co.uk email wegleam4u@gmail.com



re-upholstery



carpet cleaning



upholstery cleaning

Call in the experts.  
We Gleam has 21 years experience & 100s of satisfied customers.



## Michael Coombes Roofing & Building Maintenance.

Complete Re-roofing, Roof repairs, Pointing & Chimney repairs.

Slabbing & Brick work

Wall & Floor Tiling

Painting & Decorating

Over 20 Years experience in the Cleobury area.

**Call Michael on 07854 047413**



## Take the worry out of organising that special event...

Have your own, homemade, afternoon tea delivered and set up for you in a venue of your choice. Served on fashionable vintage china with tiered cake stands, complete with bunting, flowers, napkins and tablecloths, so that you can relax and enjoy your event.

Contact us to discuss your individual requirements for:  
Afternoon Tea Parties, Weddings, Baby Showers, Christenings,  
Birthdays, Anniversaries etc...



Mobile: Tracy & Nick Price- 07515 644865 | Facebook: Vintage Delight | Email: vintagedelight@outlook.com

## **BLOCK<sup>3</sup> ARCHITECTS**

Holly Cottage Baveney Wood Cleobury Mortimer Worc DY14 8JB



Whether it is a new build project, conversion or extension we provide creative and sustainable architectural design solutions from sketch design to completion

If you require assistance or advice on any building or planning related matter, please feel free to call me



**Tom Rogers** BA(Hons) Arch PG(Dip) RIBA T 01299 841111

M 07812 196 967

E tom@b3a.co.uk

W www.b3a.co.uk



### **Hobbs Building Services**

EST 25Years.

A Total Plastering, Maintenance and Building Service for your home,  
business and outbuildings.

Insurance work undertaken

Emergency call out service for general plumbing, roofing, boarding up damaged doors and  
windows. For a free quote please call;

Ian on; 07967190742

Email: hobbsbuildingservice@yahoo.co.uk Or Call/Text Kelly on; 07790085307

## **CLEOBURY MORTIMER PARISH HALL**

### **FLICKS IN THE STICK THIS MONTH: ‘EDDIE THE EAGLE’**

The heart warming story of the lad from Gloucester who competed in the 1988 Winter Olympics with only 20 months experience of ski jumping. The press gave him the title ‘Eddie the Eagle’ but he has since said he was ‘more of an ostrich’. It was his down to earth honesty that won him fame but no medals.

**Saturday the 25th, 7.30 start.**

**Don't be late, or you might not get in.**

**TO BOOK YOUR EVENT AT THE HALL CONTACT JAN ON 01299 271070**

## **Your Parish Hall - the Town's Best Value Venue.**



*Helen Roarles. Full of vitality,  
keeping the momentum of  
success rolling.*

Last September Helen Roarles took on a big job. She became head teacher at Bayton Church of England Primary School and set about keeping one of the most notable local primaries up to the expected mark.

A little history. Not very many years ago Worcestershire's Education Department wanted to close Bayton and send the children to Far Forest or somewhere else. That did not go down well with the community and the council backed down while a new head began to build the numbers of the pupils.

Then Avis Pounder took over as head and just turned the place around. She more than doubled the number of pupils, generated interest from parents and local residents and the reputation of the place soared. When Avis retired, Helen moved up the road a bit from Grimley Primary, where she'd been deputy head.

She's introduced booster classes before the normal school day starts and is a great believer in parents coming in to share the child's experience. One father talked about his work as a paramedic and a grandad told about life in the 1939-45 World War. "It brings it to life for them," she explains. On the 22nd of this month the children will be joining in an opera production at Malvern Theatre.

The school is now part of a teaching alliance that encourages exchange of ideas and best practice in teacher training. New is the behaviour system, with the slogan "Good to be Great". A Parent Voice Group produces ideas and feedback; all evidence of cooperation between school and parents.

Helen has hit the ground running, a bundle of energy. She takes over a school with a very high reputation, clearly

determined to preserve that status.

## THANK YOU

Coffee Morning in the Market Hall, Saturday 25th March, 10.00am - 12 noon.

We would like to thank everyone who has contributed to Macmillan whether it be at our Coffee Mornings, street collection, donations from the Sunday League, Lacon PTA, craft fairs or any other way. In 2016 we were able to send £2,975 to Macmillan to help people here in Shropshire. The generosity of our community is astounding. Thank you so much.

*Sue Henderson*

## AN APPEAL

Severn Hospice stocks of jewellery are low at present. We are always grateful for donations, whatever quality or condition - even broken jewellery can be recycled to raise money for the charity.

## GREAT SHOW

For Classic Bike enthusiasts the Wistanstow Show starts the riding season. It's in Wistanstow Village Hall, signposted off the A49 and Guest of Honour is an original British hero, Peter Williams. Sunday March 19th, doors open at 10.00, all profits to the village school. Magic day.



**CLEOBURY  
THE COUNTRY CENTRE**

Contacting us:

t: 01299 272 300

e: [business@cleoburycountry.com](mailto:business@cleoburycountry.com)

[www.cleoburycountrycentre.com](http://www.cleoburycountrycentre.com)

### Training Courses Upcoming:

Food Hygiene L2 9th March £70+VAT

3 day First Aid 13,14,15 March £185 + VAT

Health & Social Care L2 21st March £70+VAT

Emergency First Aid at Work 28th March £70+VAT

Cleobury Country Centre, Love Lane, Cleobury Mortimer, DY14 8PE

### Business Networking Meetings:

Wednesday 8th & 22nd March

@ Cleobury Country Centre from 6pm

For more information on networking & courses please call

The centre



# HOSKINS

## FAMILY FUNERAL SERVICES & STONEMASONS

Making a difficult time easier

**FUNERALS: 01299 879090 STONEMASONS: 07718900151**

STOURPORT ON SEVERN - FUNERAL HOME WITH CHAPEL OF REST  
107, THE BIRCHES, STOURPORT ON SEVERN, WORCESTERSHIRE, DY13 9NR

1ST FLOOR, THE MARKET HALL,  
CHURCH STREET, CLEOBURY MORTIMER, DY14 8EX

TRADITIONAL  
BESPOKE INC HORSEDRAWN  
GREEN FUNERALS

AVAILABLE 24 HOURS

LICENCED MEMBER OF THE  
BRITISH INSTITUTE  
OF FUNERAL DIRECTORS

PROVIDING THE VERY BEST OF CARE



NEW MEMORIALS  
ADDED INSCRIPTIONS  
CLEANING & RESTORATION  
GRANITE VASES  
GRANITE HOUSE SIGNS  
LASER ETCHED PHOTOS  
OR IMAGES  
QUALIFIED STONEMASONS

[WWW.HOSKINSFUNERALS.CO.UK](http://WWW.HOSKINSFUNERALS.CO.UK)

 HOSKINS FAMILY FUNERALS



## The Lamp Restaurant

15a High Street, Cleobury Mortimer, Shropshire, DY14 8DG

01299 272785 or 01299 271313

Fully Licenced and Air Conditioned

Serving Bangladeshi & Indian Cuisine



**The Lamp Restaurant winner of Currylife award chef of the Year**

Open 7days a week from 6.00pm until 11.00pm

The Lamp's cuisine, inspired by Sylhet, the second city of Bangladesh, offers a wide variety of choice along with established favourite dishes and a selection of Chef's Specials.

The wide variety of starters and accompaniments chosen by our chef to complement your main course.

Takeaway service offers free delivery up to 3miles for orders over £15.00.

Find us on Facebook: Lamp Inn Cleobury Mortimer

*A Merry Christmas and Happy new Year to Everyone!*

## Newbridge Computer Services Tel: 01299 270701

- ★ Want a new computer?
- ★ Worried about what you need?
- ★ How to set it up?
- ★ How to transfer your data?

**Well help is at hand!**

We offer a complete service package with all our new computers to ensure you get exactly the right system, at the right price and completely hassle free from start to finish.

**Buying a computer system from us couldn't be easier!**

Also:

Spares & Repairs  
Internet Connection  
Security: Anti-virus etc.

Suppliers of  Computers

E-mail [mike@ncs-tech.co.uk](mailto:mike@ncs-tech.co.uk)

And:

Call out & onsite Repairs  
Accessories  
Wired & Wireless Networks

website: [www.ncs-tech.co.uk](http://www.ncs-tech.co.uk)



**07971 361901 or 01299 832484**

**Complete Bathroom Installations  
Bathroom Refurbishment or Repairs  
Wet Rooms  
Professional Wall and Floor Tiling**



For a quality and guaranteed service, call Stuart for a free quote  
Highly Recommended / References available - see my reviews on [www.freeindex.co.uk](http://www.freeindex.co.uk)

**FOR THE BATHROOM YOU DESERVE!**

**Boomerang**  
of Cleobury Mortimer  
private hire travel

- Friendly, reliable service
- Local & long distances
- Fully council licensed (up to 12 passengers)
- Airport transfers
- Courier service
- All occasions catered for

**Tel: 01299 271257, Mob: 07411 142755, Email: [stuart.boomerang@yahoo.co.uk](mailto:stuart.boomerang@yahoo.co.uk)**



Registered  
Technician

**30546**

## JOHN VAIL

Plumbing, heating and bathrooms  
Installation of boilers, cookers and gas fires  
In homes, park homes and caravans  
Boiler servicing and landlords' certificates

**GAS**

**LPG**

**OIL**

Gas Safe and OFTEC registered

**07971 624804**

**01584 890946**

**[johnvail123@btinternet.com](mailto:johnvail123@btinternet.com)**



**536724**

## PODIATRY/CHIROPODY

Debby Luxton. HCPC Registered

**Treating and Caring for Feet  
General and Specialised  
(Verruca and Fungal Nail)**

[www.ludlowpodiatrist.co.uk](http://www.ludlowpodiatrist.co.uk)



## OSTEOPATHY

Ian Luxton. GOSC Registered

**Treating Pain and Injury  
Acute and Chronic  
Head to Toe**

[www.ludlowosteopath.co.uk](http://www.ludlowosteopath.co.uk)

We are both highly qualified, very experienced and absolutely dedicated to providing our patients with the best quality care in our respective disciplines.

We have many testimonials from patients, some are on our websites and a couple to the right.

Middleton | Ludlow | SY8 3EF

**T: 01584 823331**

*"I'm now free of discomfort due to the excellent and wholly appropriate treatment you have given me."*

*"We have greatly appreciated your attention and trusted your advice."*

## Mark Pearce

Landscape, Design and Rustic Garden Furniture

- Fencing
- Patios
- Drives
- Decking
- Garden Sheds
- Summer Houses
- Fence Panels
- Log Stores



And Much More

Top Quality Fully Treated Timber Products

Mobile: 07875425028

Tel: 01746718404



## Vehicle sales & valeting

**DOES THE CAR NEED A SPRUCE  
FOR THE WINTER?**

**GIVE ASHLEY A CALL FOR A QUOTE**

**FULL OR PART VALETS TO YOUR BUDGET  
(BOOKING ESSENTIAL)**

**Tel: 01299 271365**

**Mobile: 07710 913401**

## Guitar Tuition

- ◆ Experienced tutor based in Stottesdon.
  - ◆ Teaching for 20 years privately and in schools.
    - ◆ One to one or shared lessons.
  - ◆ Member of the Registry of Guitar Tutors and Musicians Union.
  - ◆ All ages, styles and abilities welcome.
  - ◆ DBS checked, full liabilities insurance.
- Contact: [MARK.CHECKLEY@sky.com](mailto:MARK.CHECKLEY@sky.com)

01746 718636 - 07708 386433

Carolyn & Keith Balmer support a number of people who are involved in charitable activities. So we are always looking for soft toys and teddies for the "Teddy Trust". [www.teddytrust.org.uk](http://www.teddytrust.org.uk).

Also if possible new, or very good quality, pens, pencils, note books, school bits and pieces, anything that would be useful for deprived children.

**Phone 07944234636**

## Serviced Office available to rent in the Cleobury Country Centre

**20ft long x 9ft wide**

**£2800 pa + VAT**

**For more information please call  
the centre on  
01299 272300**

Create your  
own Original

  
**CHARLTON**  
INTERIORS

Local Upholstery/Furniture Restoration

Call for a free estimate to restore your furniture  
or view the Website [www.charltoninteriors.com](http://www.charltoninteriors.com)  
to see a range of quality antiques restored and  
awaiting your choice of top cover.

Tel: 01746 718285 or 07837609229  
email [info@charltoninteriors.com](mailto:info@charltoninteriors.com)



**MARCHES**  
PEST CONTROL

Pest control and wildlife management  
Domestic - Commercial - Agricultural

Geoff Jordan

BPCA Qualified for all insects, rodents and wildlife

Mobile: 07971 866564

Email: [info@marchespestcontrol.co.uk](mailto:info@marchespestcontrol.co.uk)

Web: [www.marchespestcontrol.co.uk](http://www.marchespestcontrol.co.uk)

We cover: Cleobury Mortimer, Ludlow, Tenbury Wells, Leominster, Kidderminster, Bewdley, Bridgnorth, Worcester and surrounding areas

For all of your picture framing needs, visit .....

**Cross House Arts**  
Picture Framing Gallery, Mable

incorporating

**Frames By  
Design Ltd**

Cross House, Mable, Worcs. DY14 9JL  
**01299 832616** (opposite the Sun & Slipper pub)  
[www.pictureframes-uk.com](http://www.pictureframes-uk.com)  
Open Wed. to Sat. 10:00am—5:00pm

Ring George or  
Dean anytime  
**01299 832616**

**fairway**

**Accountants & Business Advisers**

Proactive professional team available 7 days a week. Highly competitive fees.

Contact: Simon Hector 07896 439594 or Simon Connolly 07973 360456

Offices in Cleobury Mortimer & Stourport on Severn

Main Tel: 01299 822283 Email: [team@fairway-net.co.uk](mailto:team@fairway-net.co.uk)  
[www.fairway-net.co.uk](http://www.fairway-net.co.uk)



# CLEOBURY OPTICIANS

16 Church St, Cleobury Mortimer, DY14 8BX

*Your friendly local eyecare team*

- NHS & Private Tests
- Home Visits
- Children's tests & Glasses Free

Call **01299 270012** for an appointment  
or email: [cleburyopticians@outlook.com](mailto:cleburyopticians@outlook.com)

## **Hands on Printing**

**Print your own photographs on our SNAP LAB PRINTER  
or we can do it for you.**

**All Digital formats disc- cards or phones**

**Print sizes 6 x 4 5 x 7 8 x 6**

**Enlargements from 10 x 8 to 36 x 24 inches**

**Canvas prints from 16x12 to 20 x 30 inches**

**Prints from 35mm slides - Celebration Banners - Paper or Plastic**

**Colour Business Card s - Flyers - Raffle Tickets B-W or Colour copying**

**Most video tapes transferred to D.V.D.**

**Audio tapes and records to C.D.**

**Cine films to D.V.D.**

**Pass ports - Bus pass - Driving licence photos etc.**

**A selection of Photo Frames now available**

**43, High street, Cleobury Mortimer. DY14 8DQ Tele:- 01299-272757**

## **Paul Harding**



## **Tree Services**

- Tree surgery and felling
  - Woodland thinning & maintenance
  - Hedge trimming & grass cutting
  - Supplier of hardwood logs, kindling and garden bark
  - NPTC certified fully insured. Domestic and commercial work undertaken.
- Tel 01584 890 993 Mob 07970 878 224**

Lower Street Garage is back in business, under new management and after a makeover that saw four new lifts installed in the workshop. It's run by Deg and Marie, who have moved from the Cleobury Garage premises after six years of a leaking roof and a long, narrow access that put a lot of people off.

Deg - he was called that at school and it's stuck - is a quiet getter on with things. No fancy office or sparkling white overalls, he's a mechanic who played around with his uncle's old Ford Anglia van as a kid and has been learning and improving ever since.



*In charge - Deg and Marie.*

Marie is the smiling face of the business, who greets customers when they walk in.

The couple have three sons, with Kirun working in the business along side mechanics Matt Gittins, Ricky Butler and Gary Halpin, Marie's brother. A real family business, able to tackle any job on a car or van and not charge the arm-and-a-leg prices of posh, fancy places.

I have personal experience of their ability and service. When I was running a VW Golf it failed its MoT and needed a replacement braking system unit. But to get that aligned with the steering required it being driven for 70 or so metres in a straight, and then turning left at a specific angle. "That's not easy in Cleobury High Street," Kirun explained, but he disappeared up the Ludlow Road and came back with the unit aligned.

My next car was a BMW estate that is lovely to drive, but had a problem with the self levelling rear suspension. Marie phoned and asked if I was sitting down - a new pump would cost £850 plus VAT and fitting. Could they suggest an alternative? A search on the web produced a pump rebuild kit for £50 and it's still working just fine.

That positive approach to keeping costs down reflects Deg's view. "If I can replace a part in a pump, rather than replace the whole pump, I'll do

it," he explained. Bless the man, he knows we don't all have a lot of money to throw at a car.

The front of the garage will be changing, as what was the showroom becomes a tyre bay, with all popular sizes stocked in a budget range. If you want high performance rubber, they'll order it in with a minimum of delay.

The garage is officially open from 8.30 to 5.30 five days a week. "But I have been known to be here until 1.00 in the morning if it's a really urgent job," says Deg.

They are busy, as you'd expect a garage with such a positive and helpful approach to be. And they don't just do cars. They can handle motorcycle work and MoTs and will even mend a bicycle tyre puncture if it's urgently needed. Good people.



*The workshop crew. From left: Kirun, Gary and Matt Gittins.*

## Lower St Garage

7 Lower St, Cleobury Mortimer. DY14 8AA

- M.O.Ts on cars, motor bikes & small commercial vehicles
- Tyres, Tyre fitting,
- Puncture repair and Tracking.

- Diagnostics, Air conditioning
- Welding.
- Service and Repairs to most vehicles.
- Delivery and Collection Service Available

**Contact The Team at Lower St Garage on: 01299 270208**

## MAWLEY OAK TRAVEL



8, 16, 24, 28, 32, 35 and 53 seat vehicles  
Available for hire for all Occasions

- |                                 |                             |             |
|---------------------------------|-----------------------------|-------------|
| * Airport and Seaport Transfers | * Weddings                  | * Day Trips |
| * Theatres                      | * Schools                   |             |
| * Sporting Events               | * Dog & Horse Racing Events |             |

PHONE NOW FOR A FREE NO OBLIGATION QUOTE : 01299 270 207

www.mawleyoaktravel.co.uk  
 enquiries@mawleyoaktravel.co.uk

## MAWLEY OAK GARAGES LTD

- |                          |                      |                          |            |
|--------------------------|----------------------|--------------------------|------------|
| *Historic car specialist | *Servicing & Repairs | * All jobs undertaken    | * Exhausts |
| *Diagnostics             | *Clutches            | * Mawley Oak Tyre Centre |            |

*We offer a local collection & delivery service .Courtesy car available \*(conditions apply)*



### SPECIAL OFFERS

MOT, Oil & Filter change from **£99** \*(conditions apply) **Free** MOT with Any Full service MOT'S ONLY **£42**

Call on 01299 270 207 and ask for the workshop OR Email at: Mikemawleyoakgarages@gmail.com

### Mawley Oak Shop & Travel Office

Mon To Fri 9:00am—5:00pm

Selling Red Diesel, Coal, Logs, Kindling, Paraffin, Oils & Lubricants, Confectionary ,  
 Drinks, Cigarettes, Sandwiches

### Mawley Oak WORKSHOP

**\*\* New opening Time's\*\***

Mon To Fri 8:00am—5:00pm

**Tel Cleobury Mortimer 01299 270207**

## CLEOBURY MORTIMER SPORTS & SOCIAL CLUB MARCH 2017 ENTERTAINMENT PROGRAMME

**OPEN MIC  
 NIGHT**

**THURSDAY  
 30<sup>TH</sup> MARCH**

**FROM 7.30PM**

*Club available for private hire*  
 £50 non members  
 £45 members

### Six Nations 2017

**Saturday 11<sup>th</sup> March 4pm**

**England v Scotland**

**Saturday 18<sup>th</sup> March 5pm**

**Ireland v England**

**SUNDAY MARCH 5<sup>TH</sup>**

**GUINNESS WORLD QUIZ**

**6.45PM Registration**

**7.30PM Start**

**£15 per team of UP TO 6  
 players**

**Proceeds to Cleobury COCO**

**"SKY AND BT SPORTS"  
 "FORMULA ONE IN MARCH"**

*Find us on Facebook*

*Call us on 01299 271448*

*Pop in and see us*

*Everyone Welcome*

## **CLEOBURY W.I.**

We were 'dancing out' in February with Crooked Steeple Morris. How lucky we are to have such a talented team of dancers and musicians in Cleobury Mortimer who brought a miserable dark evening to colourful life! The Winter Warmer Soup Lunch, fundraising for the Saint Mary's Youth Project was well supported with customers enjoying delicious home made soup and puddings.

More information on Cleobury Mortimer WI's Facebook page or contact Judy Sant [01299 270983](tel:01299270983) email [judysant10@gmail.com](mailto:judysant10@gmail.com).

*Judy Sant*

## **LOCAL JOINT**

### **COMMITTEE MEETING**

Cleobury Mortimer Local Joint Committee is hosting a public meeting on Thursday March 9th, at 7.00pm in Cleobury Medical Centre, on Local Health and Wellbeing matters. Guest speakers will be talking about:

**Shropshire's Neighbourhood Care Model.** Putting respective skills and knowledge together to create resources needed to deliver the right health and wellbeing services. This work is linked to the Shropshire and Telford & Wrekin Sustainability & Transformation Plan.

**Karen Calder , Shropshire's Health and Wellbeing Board.** Our aim is to help as many people as possible live long, happy and productive lives by promoting health and wellbeing at all stages of life.

**People2People** provide social work and occupational therapy services across Shropshire for older people and adults who have disabilities. They work in

partnership with Shropshire Council to enable people to live as independently as possible as part of their communities, leading active and fulfilled lives. This is a public meeting and all are welcome.

*Vicky Turner*

## **BIG DISCO NIGHT AT KINLET**

Saint Patrick's Day, March 17th, sees a big 70s and 80s Disco Night at Kinlet Village Hall. Fancy Dress is optional, with prizes for Best Male and Female. It starts at 7.00. goes on til late and is all about raising money for the Trust Lewis fund. All profits go to local charities like Prostate Cancer Support, Family Fund, YoungMinds, Autism, Little Hearts, Kemp for Kids and Saint Mary's Youth Project.

Admission is by ticket only, available at £15 a pop from Rachael on 07715 030 510 or 01299 841032. If you email, it's [trustlewis7@gmail.com](mailto:trustlewis7@gmail.com). This is Rachael's final year of raising funds for Trust Lewis and she's set herself a target of £10,000. So have a great time and help a great cause while you're doing it.

## **HISTORIC COMMERCIAL VEHICLES CLUB**

Well you won't have any doubts what this gathering is all about. They're meeting in the Ludlow Brewery, which is near the railway station, on Tuesday, March 14th at 7.30.

It sounds like a social occasion, with the bar open and food available, plus a speaker.

## **BIRMINGHAM PHILHARMONIC PLAY**

It's always a sell-out occasion when the Birmingham Phil

come to play in the Parish Church. There's a special sense of occasion with the lovely old building lit up and its excellent acoustics used to best advantage as the orchestra play. This year they have booked in for Sunday the 19th of this month, and great music begins at 7.30.

They will once again be under conductor Michael Lloyd with soloist Alison Roddy starring. The evening includes Variations on a theme of Haydn, by Brahms; Mozart's Exsultate Jubilate and extracts from Mahler's Symphony No 4 in G major.

Tickets are £15 each and include an interval drink. They are available from Cleobury Country Centre, Cleobury Pharmacy, Spire Hairdressing or from me on 01584 891351.

*Alec Osbaldiston*

## **LENT LUNCHESES**

Starting on March 3rd, soup and apple pie lunches will be served between 1.00 and 2.15pm in the Market Hall on six Fridays throughout the season of Lent. This is all in aid of Christian Aid, which operates on the basis of need irrespective of nationality, religion, ethnicity or gender, aiming to contribute to the aim of a world free from poverty and inequality. Everyone is welcome to join in and enjoy home made fare and good company, put the dates in the diary now, March 3, 10, 17, 24, 31st and April 7th.

*Judy Sant*

## **SILLY BIT**

**'It isn't premarital sex if you have no intention of getting married.'**

*George Burns*



# SKELLERNS

## DOORS & WINDOWS



- UPVC Fascias & Guttering
- UPVC Windows, Doors & Conservatories
- General Home Improvements
- Re-roofing & general building work
- Replacement Glass
- Patio Jet Washing



Free No-Obligation quote. FENSA registered company with years of experience

Call Mike on: 01886 812250 or mobile: 07814 577739

[www.skellernsdoorsandwindows.co.uk](http://www.skellernsdoorsandwindows.co.uk)

## Elite Sweeps

Professional Chimney Sweep

## & HETAS Stove Installer

- ✓ Prompt, reliable & friendly service.
- ✓ Cows and Chimney Pots fitted.
- ✓ Fully qualified and fully insured.
- ✓ Guild certificates issued after every sweep.
- ✓ HETAS Approved Installer.



Call Eddie

Tel. 01299 382222 / 07895 612915

[www.elitesweeps.co.uk](http://www.elitesweeps.co.uk)




## Garden Design & Landscape Architecture

- \* Female garden designer & qualified Landscape Architect.
- \* Providing innovative Garden Design solutions and Landscape Architectural services.
- \* Domestic and commercial clients, no job too small, all jobs considered.
- \* For professional and friendly advice, please **call 07769 919 197**
- \* **Call NOW for Garden Designs over Autumn/Winter...ready for Spring Build !!**



*Quercus Landscapes Ltd*

Find us on 

### STATIC CARAVAN

Rural location, 3 miles from Cleobury Mortimer  
Furnished and equipped to an excellent standard

**AMPLE PARKING**

**£275 PER CALENDAR MONTH**

**Would suit one working person**

**Non-smoker**

**Tenancy Time negotiable**

**References Required**

## **CLEOBURY PATIENTS' VOICE**

Even though Shropshire will only have one Emergency Department, the existing Urgent Care Centres, which currently sit alongside the threatened Accident and Emergency Departments at Shrewsbury and Telford, are being described as 'A&Es' in the latest publicity about Future Fit. I daresay this sleight of hand is justified by the continuing claims that Urgent Care Centres could treat 80% of those currently attending A&E, claims ridiculed by the Royal College of Emergency Medicine (who put the figure closer to 30%). The existing Urgent Care Centres in Shrewsbury and Telford are privately owned and run (with a parent company registered in the offshore tax haven of The Bahamas) so it's proved almost impossible to extract any useful figures as to the numbers or proportions they currently handle.

Confused? That's now clearly part of the strategy, and at least some of our elected representatives have fallen for it too, which is a pity.

The overall mantra for the strategy is "care closer to home", with far fewer people to be treated in hospital. We will be cared for "in the community" instead, although not in community hospitals (which are regarded as too expensive) but in "virtual wards". Yes, that's your own bedrooms, folks. This will all be enabled by new "Neighbourhoods", and these are part of the agenda of a Cleobury Local Joint Committee meeting to be held at the Medical Centre on Thursday 9<sup>th</sup> March at 7pm.

People2People – who deliver social care to the elderly and disabled – will be represented too, and the Shropshire Councillor who chairs Shropshire's Health and Wellbeing Board, which is responsible for strategic health and care decisions in the county, will be present. I urge you to come along.

Over the border in Worcestershire, where the majority of the Medical Centre's patients are referred for treatment, the hospital trust slides ever closer towards 'Special Measures' as public consultation continues on its Sustainability & Transformation Plan. There is a further drop-in event at Kidderminster Hospital on Monday 13<sup>th</sup> March, between 11 and 3, and you can also make your views known online, by email or post until 30<sup>th</sup> March.

Many thanks to all those who organized and supported a very successful joint Coffee Morning in the Market Hall at the start of February. The highly respectable sum of £270 was raised on behalf of the Nightingale Nursing Fund and the local carers' group, as well as CPV.

CPV meets at the Medical Centre every third Monday of the month at 6:30pm. We always welcome new members so if you would like to get involved please contact us: telephone 01299 407224, email [cleoburypatientsvoice@hotmail.co.uk](mailto:cleoburypatientsvoice@hotmail.co.uk) or make use of our comments box in the Medical Centre's reception area.

*Mark Radford*

## **FOOTPATH NEWS**

The next Parish Walk will be on Sunday March 6<sup>th</sup> at 10.00 outside St Mary's. I hope you

can join us! See [www.cmfa.co.uk](http://www.cmfa.co.uk) for details.

The CMFA decided to try something a little different and on February 16<sup>th</sup> fifteen members met for breakfast at The Colliers. It was a relaxed and enjoyable event and all agreed that it was a 'nice change'. Thank you to Diane for making all the arrangements.

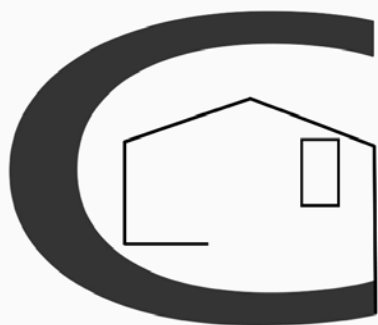
We would welcome new members who can join us in our outdoor activities – workparties, leading local walks etc. Drop us an email via the website.

For existing members a reminder of the AGM coming up on March 31<sup>st</sup> at 7.30 pm in the Bell Inn. *Graham Simpson*

## **THE READING GROUP**

Our book this month was *Saving Fish From Drowning* by Amy Tan, a novel narrated by a lady who was dead. This posed a problem for some, while others appreciated the quirky style. Our main criticism was that the book was too long. A couple of readers thought it was rather silly but being a novel it didn't need to be authentic. Set mainly in Burma (Myanmar), there followed a discussion on how much was based on truth and whether one should visit a country if you do not agree with their regime. Summing up, it was unusual, thought provoking and humorous. Not great literature but took you somewhere else whilst you learned things about Burma. Maybe a good holiday read?

We have a challenge now to read *My Name is Red* by Orhan Pamuk in four weeks, it has 671 pages. We meet again on March 20<sup>th</sup> at Cleobury Library, 7.30pm, to see how we got on.



*Chris Stokes*  
**Roofing &  
Building**

[www.proroofer.co.uk](http://www.proroofer.co.uk)  
tel: 01584 890069  
mob: 07853 461290



### Now at Cleobury Medical Centre

- Free hearing health checks
- The latest hearing aids
- Repairs and servicing
- Tinnitus Advice
- Independent advice and aftercare service

**Tel: 0800 731 8545**

**Email: [clearhear@btinternet.com](mailto:clearhear@btinternet.com)**

**Web: [www.clearhear.co.uk](http://www.clearhear.co.uk)**

## Alexander & House

Alexander House is a national, award-winning, Chartered firm of Independent Financial Advisers and Wealth Managers who can provide advice to individuals and businesses.

**Contact Nigel Porter  
locally on 01584 892098  
or 07974 085141**

### Financial Advice on Your Doorstep

**Investment  
Planning**

**Retirement  
Options**

**Reducing  
ongoing  
charges / costs**

**Auto-enrolment  
- understanding  
your obligations**

**Reducing Tax**

**Divorce**

**Protecting you, your  
family and your estate**

**Office: 0800 316 1811 / [info@alexanderhousefs.co.uk](mailto:info@alexanderhousefs.co.uk)  
[www.alexanderhousefs.co.uk](http://www.alexanderhousefs.co.uk)**

Alexander House Financial Services Ltd is an  
appointed representative of CAERUS Financial Limited



## LACON CHILDE'S CLEOBURY COSMETICS

In the January Clarion we reported work under way as part of the STEM project - Science, Technology, Engineering and Maths - at Lacon Childe School. There was a lot of promise in their plans and thinking, but the phrase "Work in Progress" did cover up any gaps.

That interview was conducted early in December. Two months later came an invitation to come and see what this group of pupils had produced and to hear their plans for selling what will be known as Cleobury Cosmetics. I can tell you that work in progress has progressed a great deal and produced a range of cosmetics well worth anyone's attention.

Presentation is important for products like these and a clever blend of economy and imagination uses simple parcel labels with an appealing message on a white label added. So soap is given a lift when you read that it's 'White moisturising soap - hand made with goats milk and coconut oil.' The alternatives are 'With a hint of...' Rose or Lavender.



*Team members Jessica (left) Tom and Cara show off the selection.*

There are two choices of lip balm, Beeswax and Rose. Or as the price list describes the latter: "Natural lip balm, hand made with Beeswax and a hint of Rose oil." Presented in small screw-top containers.

There's also moisturiser for dry skin, or in their more romantic words: "Hand made with natural cocoa butter and coconut oil." The alternatives are with Rose or Lavender oil. In a slightly bigger container and well priced at £2.00 each. The lip balms cost £1.20 each and a box of three soap scents is a mere £4.00.

That price structure is another strength of this impressive range that is produced during lunch

time or in a Wednesday after-school session. The soap comes in either a simple straight mould or heart-shaped for a romantic touch, every product labelled with the same care and carrying its production batch number.

Just within the school sales had topped £200 before the range was offered at Parents Evenings and for both Valentine's and Mother's Days. They will not be offering it at the Farmers' Market as there is a requirement for business insurance there, and that would add to the cost of the operation. As the end product is to make a profit to split between the STEM fund and the Jack Edwards Charity, a careful control of costs is needed. Good business discipline.

But the early success shows the potential in Cleobury Cosmetics and the good sound thinking behind its creation. The team changes slightly as members move up to the next year and younger pupils join in, so it could keep producing business training and profits. Only time will tell.

On a personal note, I bought three soaps and will buy them again. Good stuff from pupils getting a good grounding in the ways of business.

Soap products include.....

- White moisturising soap- Hand made with goats milk and coconut oil.
- Pink Floral soap - Hand made with a hint of Rose oil.
- Mause relaxing Soap - Hand made with Lavender oil. £4.00 for a box

**Cleobury**

**Cosmetics**

Hand made at Lacon Childe

Ideal gifts for Birthdays and Mothers day!

Moisturiser products include .....

- Coconut moisturiser - Hand made with natural cocoa butter and Coconut oil.
- Rose moisturiser - Hand made with natural cocoa butter and a hint of Rose oil.
- Lavender moisturiser - Hand made with cocoa butter and a hint of Lavender oil. £2.00 a pot

Lip Balm products include .....

- Natural lip balm - Hand made with Beeswax.
- Rose lip balm - Hand made with Beeswax and a hint of Rose oil. £1.20 a pot

Contact [Johnston.C@lacon-childe.org.uk](mailto:Johnston.C@lacon-childe.org.uk)

To order your cosmetics.

Order a box of your chosen soap, moisturiser and lip balm for £4.50





**L R DEVELOPMENTS**



We are a local building company who specialise in a variety of jobs to suit your needs!

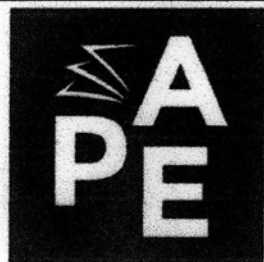
**For more information contact:**

**Lee Rollings**

**Email: [lee@lrdevelopments.co.uk](mailto:lee@lrdevelopments.co.uk)**

**Telephone: 07506 791 577**

**Website: [www.lrdevelopments.co.uk](http://www.lrdevelopments.co.uk)**



**Finance**

## **Financial Accountants**

**We are local Accountants who provide a quality service at competitive prices**

**Not VAT registered so you save 20% on your fees immediately**

**We can help with the following :**

Bookkeeping  
Payroll/PAYE  
Accounts Preparation  
Business and Personal Tax  
VAT  
Business Start-ups/Financing  
Company Formations/Secretarial  
Business Advice

**Area covered 15 miles of Cleobury**

To include :  
Cleobury Mortimer  
Kidderminster  
Tenbury Wells  
Bewdley  
Bridgenorth  
Stourport-on-Severn  
Ludlow

**Speciality in pub/restaurants and building contractors including CIS sub-contractors**

**Member**



BRITISH INSTITUTE OF INKKEEPING

**For a free quote :**

**Tel : 01299 272647 or mobile 07779 011819**

**Email : [paul@paefinance.co.uk](mailto:paul@paefinance.co.uk)**

**Website : [www.paefinance.co.uk](http://www.paefinance.co.uk)**

# Community Contacts for Clarion Readers

CEMETERY ADMINISTRATOR	Theresa Ray	07703 965 064	theresa.25016@hotmail.co.uk
CLEOBURY COUNTRY CENTRE		01299 272300	In Love Lane, 9 to 5 Mon to Fri.
CITIZENS ADVICE		08444 991100	Advisors on line 10.00 to 4.00
CLEOBURY CARERS	Wendy Duley	01299 270562	
CLEOBURY COMPASSIONATE COMMUNITIES	Katja Ward	01299 270018	10.00 to 12.00 Weds
CLEOBURY MORTIMER LIBRARY		01299 272301	Open 9 to 7 Mon, 9 to 5 Tues/Fri and 10 to 1 Sat.
LOCAL POLICE	Constable Anne O'Leary		ann.oleary@westmercia.pnn.police.uk
CLEOBURY MORTIMER GUIDES	Dorothy McBride	07761 976610	
CLEOBURY MORTIMER SCOUTS	Ingrid Purslow	01299 270314	
CRIMESTOPPERS		0800 555 111	Free Police contact. Talk in confidence, to report any crime.
DOMESTIC VIOLENCE HELPLINE		0800 783 1359	Women's Aid, 24 Hour support:
HOME FROM HOSPITAL		01584 878046	Help over the first weeks back home from Age UK
MARKET HALL	Dorothy McBride	07761 976610	dorothymcbride@cleobury.org.uk
MEDICAL CENTRE		01299 270209	Out of surgery hours, use the Shrop Doc Service.
SHROP DOC		08444 068888	Service available evenings and weekends
THE PHARMACY		01299 270219	Closes for half day on Saturday. Delivers prescriptions
NEWLIFE CHURCH	Pastor E Stirrup	01562 630595	Sunday services at 10.30
NIGHTINGALE NURSING FUND	Rosemary Abbiss	01746 718451	
PARISH COUNCIL	Clerk Matthew Sheehan	01299 271154	Market Hall 9 to 2 pm, Mon to Fri. <a href="http://www.cleobury.org.uk">www.cleobury.org.uk</a> . Council meets in the Market Hall on the first Monday of the month
POST OFFICE		01299 270211	In the Spar Grocery Store, Church Street
SAINT MARY'S YOUTH PROJECT	Mark Greaves	07828 116810	mark.stmarys@live.co.uk
SHROPSHIRE COUNCIL		0345 678 9000	
SOUTH SHROPSHIRE YOUTH FORUM			richard@ssyf.net.
VOLUNTARY CAR SCHEME		01299 666119	for bookings
WASTE DISPOSAL		0345 678 9007	The contractor is Veolia
WATER SUPPLY EMERGENCIES	Severn Trent	0800 783 4444	

**Collect the Clarion from:** Spar Grocery, M & M Baldwin, Butler's Store, Cleobury Cafe, The Severn Hospice Shop, The Co-Op Store, Carrot Tops, Purslow's, The Library and Simply Fresh, **Cleobury Mortimer.** Heath Farm Meats, **Bagginswood;** Brian Link, **Bayton;** Post Office **Clee Hill;** Village Store, **Cleobury North;** **Clows Top Stores;** The Sun and Slipper, **Mamble;** **Hopton Bank Service Station;** **Ludlow Library;** **Mawley Oak Garage;** Coppice Lodge, **Mawley,** The Colliers Cafe & Shop, **Rock;** The Fighting Cocks, **Stottesdon;** The Duck Inn, **Chorley;** The Live and Let Live, **Neen Sollars;** The Eagle and Serpent, **Kinlet;** Parker Motors, **Ditton Priors.**

Missed your Clarion? Cleobury Mortimer Library keeps the current month's copy on file and all back issues are available to read in pdf form from [www.cleoburyclarion.co.uk](http://www.cleoburyclarion.co.uk).

## THE DEADLINE FOR THE APRIL ISSUE IS MARCH 25th

**Editor and Advertising Sales:** Jim Reynolds, 4 Childe Road, Cleobury Mortimer, Shropshire DY14 8PA. Telephone: 01299 270642 Mobile: 07410 977 212

E: [uncle.jim@icloud.com](mailto:uncle.jim@icloud.com)

The Clarion On The Web: [www.cleoburyclarion.co.uk](http://www.cleoburyclarion.co.uk)

The Clarion is published by Cleobury Clarion Media Ltd and printed by Glint Print (01299 266657)



**Cleobury Mortimer**

**Kidderminster**

36 High Street  
Cleobury Mortimer  
DY14 8DQ

71 Coventry Street  
Kidderminster  
DY10 2BS

**01299 271477**



**Pinkham Lane  
Cleobury Mortimer**

**£325,000**

A charming, spacious home situated in a desirable neighbourhood surrounded by picturesque grounds. EPC E

## ***Residential Sales***

The latest figures are in for the Nock Deighton House Price Index, seeing an increase in January of 0.32%. Steady, gradual increases in prices are an indication of a well-performing market, so this is a great start to the year. Last month, we spoke about how some national commentators were predicting a tough year, but national figures are heavily skewed by the London market. What these early figures show us is that buyers and sellers can have confidence that the housing market in Shropshire and Worcestershire is on a steady course.



Erica Hinwood  
MARLA MNAEA  
Office Manager



**Oakdene  
Cleeton St Mary**

**£650 pcm**

Four bedroom detached property with single garage. Short term 6 month tenancy only. EPC D

## ***Lettings***

You may have heard about bosses checking their new employee's Facebook profile before offering them a job, but did you know that some landlords are now doing the same for potential tenants? Social media is so prevalent nowadays that it's only natural for landlords to use it as a means of researching tenants. It is something of a grey area, but if your Facebook profile is accessible to the public then there is nothing to stop people viewing it, whether it is your prospective new boss, landlord or letting agent. To read more on this article, please visit [www.nockdeighton.co.uk](http://www.nockdeighton.co.uk)



Coral Walrond  
MARLA MNAEA  
Lettings Negotiator

PROPERTY AGENTS | VALUERS | SURVEYORS | AUCTIONEERS

**[www.nockdeighton.co.uk](http://www.nockdeighton.co.uk)**

CLEOBURY MORTIMER | KIDDERMINSTER | LUDLOW | BRIDGNORTH | IRONBRIDGE | NEWPORT | TELFORD | LEOMINSTER