

The Cleobury Clarion

THE REMARKABLE PETER JACKSON



High up on Kilimanjaro, the highest peak in Africa, 76 year old Peter pauses for a photo before continuing the climb to the 5895 metre peak. When he got there he needed medical attention before tackling the seven hour trek back to base camp.

It's quite a remarkable story. He's not the first Cleobury resident to tackle that climb, but he's certainly the oldest. A new local hero! His story is on Page 29.

REMEMBRANCE WEEKEND

Not an official title, but with Remembrance Sunday and the great display of loyalty followed by the November 11th assembly at the town's memorial that will climax with the national Two Minute Silence, we will have a weekend to remember.

It's a remarkable occasion, with the Church of England and Royal British Legion cooperating to remember those lost in conflict. It tends to make many stop, wonder and say a brief prayer of thanks. In a world where the wars in the Middle East and between Russia and Ukraine dominate our news bulletins, families must fear for a future that their children and grandchildren will face.

Whether you make a donation to our forces' support funds, to the charities that work tirelessly to help the wounded and bereaved or just keep working to support your own, may God bless you.

WELL DONE, THE REGAL

The Regal Theatre, that works so hard to bring visitors to Tenbury Wells, had a heart stopping experience with the heavy rains of October 17th. It poured down and the result was the River Teme rising far enough to flood the main street.

Every business along that normally busy thoroughfare was fighting to stay open and the theatre staff, many of them volunteers, were amongst them. They reported one panic moment when water came through the auditorium wall, but the reaction was quick and effective.

The Regal was open for business and entertainment on the evening of the 18th. In time for the great Fairport Convention folk-rock stars to celebrate their 57th anniversary. The theatre manager spent 16 hours on site in the battle to open. That man deserves a round of applause.

B Price Forestry



Supplying kiln dried logs in 3 convenient load sizes: a bag, a pickup load or a transit/trailer load. We also stock nets of kindling.

We are Ready to Burn accredited and offer free delivery within 10 miles.

Logs are between 8-10 inches in length and are kiln dried to 20% or less moisture content.

**** Summer promotion – discount on prices for orders placed between 1st June 2023 and 31st August 2023 ****

For prices, availability or to place an order, please contact us on

01584 891307 or 07518 810269

B Price Forestry, The Workshop, Bitterley, Ludlow, Shropshire, SY8 3HW





Victoria Allen Funeral Services

**An Independent Family Business offering a
Personal and Professional Service**

Over 25 years' Experience

Competitively Priced

Private Chapel of Rest

Golden Charter Pre-Paid Funeral Plans

Covering All Areas

Home Visits Available

01584 879035

24 Hour Service

8 Charlton Rise, Ludlow, Shropshire, SY8 1ND

www.vallenfuneralsludlow.co.uk

Email: vafs@btinternet.com



THE CLEOBURY CLARION NOVEMBER 2024



*Pothole of the Month.
Did you really think they'd
vanished?
We found this selection
on Page 15*



*We Went to Market and
found some very tasty
Treats. Like Berry's ice
creams - yummy!
Page 45*



*Grace Young's GK Y
Dancers will be a big
attraction at Ludlow's
Winter Festival
Page 47*

And On Other Pages...

5 - Contacting our MP
7 - Christmas Fayre at Kinlet
9 - Birmingham Philharmonic
11 - Cleobury W.I.
13 - Stepping Out
17 - The Vanishing Sign
21 - November in the Wyre Forest
23 - Stuart Anderson MP
25 - Saint Mary's Benefice
27 - Royal British Legion News

29 - Kilimanjaro Conquered
32/33 - Doddington Lodge
35 - Simon in the Garden
41 - Mrs Grumpy
45 - Our Primary School grows.
47 - Cleobury talent
51 - Let's Beat the Scammers
55 - The Social Calendar
58 - The Town Council Report
59 - The Community Hub



OvenGleamers Kidderminster
The Oven Cleaning Service

**We Don't Just Clean Them
We GLEAM Them !**

Nigel will come to your home and deep clean your cooking appliances until they Gleam. Our unique process is mess, odour and fume free using only organic products within your home. All work is backed by our **Customer Satisfaction Guarantee.**

5 ★ Reviews

Safe,
Eco-Friendly
Fume-Free &
Only organic
Products
are used

Nigel from OvenGleamers cleaned my oven and the results were stunning. My oven has never looked so good. I can certainly recommend OvenGleamers. I should also say that Nigel was polite and friendly and cleaned up everything after he'd finished. A brilliant job and well worth the cost. Adrian T

OvenGleamers can clean your ...
Ovens | Ranges | AGAs | Hobs | Extractors | Microwaves | BBQs

Contact Nigel ~ Your LOCAL OvenGleamer

Find us on ...




OvenGleamers
The Oven Cleaning Service
OvenGleamers Kidderminster
Call 01562 702883



follow us on facebook

DRY CLEANING & LAUNDRY SERVICES
20 HIGH ST, CLEOBURY MORTIMER DY14 8DG
01299 270571 / 07483 380019
HOUSEHOLD & COMMERCIAL WORK WELCOME
FULLY ATTENDED MONDAY TO SATURDAY 9AM-5PM

THE PLACE TO AIR YOUR DIRTY LAUNDRY!!

self service & full service wash/dry/fold/iron large machine for big items
dedicated machine for pet items equestrian rug cleaning team sport kit laundry service
professional shirt service dry cleaning service duvet/ blanket/sleeping bag washing service
Nikwax wash and proof for outdoor clothing
local delivery available, we specialise in hotel and B&B laundry and ironing

CELEBRATING 10 YEARS IN BUSINESS

THANK YOU TO OUR LOYAL CUSTOMERS AND THE COMMUNITY FOR THEIR SUPPORT



Michael Coombes Roofing & Building Maintenance.

Complete Re-roofing, Roof repairs, Pointing & Chimney repairs.
Slabbing & Brick work
Wall & Floor Tiling
Painting & Decorating

Over 20 Years experience in the Cleobury area.

Call Michael on 07854 047413

Hedge Cutting & Fencing

Cleobury Mortimer, Bewdley, Rock
& surrounding areas



Call C.B. Contracting on 07398 996129 for pricing and availability

Tele:-

01299-272757

Hands on Printing

Email:-

clickclick2@hotmail.co.uk

Mobile 07708 587787

All digital media printed to 6"x4" 5"x7" 8x6" 10"x8"

CANVAS WRAPS FROM 12"x16" - 30"x20"

ENLARGEMENTS FROM 12X10" TO 24X36"

FROM PHOTO'S, DIGITAL MEDIA & 35mm SLIDES



**PASSPORT PHOTO'S ONLY £5-00
WHILE YOU WAIT**

**MOST VIDEO FORMATS TRANSFERRED TO D.V.D.
USB or SD cards**



INCLUDING VHS - VHSC - SONY 8 - DIGITAL 8 - Hi8 - MINI DV & BETAMAX

REEL TO REEL & CASSETTE
AUDIO TAPES & OLD LPs TO CD



**PHOTO
&
VIDEO FILES
TRANSFERRED
FROM
MOBILES
TO DVD ETC.**



**Video Filming
Service**

43, High St.
Cleobury Mortimer.
DY14 8DQ

**STANDARD 8 - SUPER 8 FILMS TRANSFERRED TO D.V.D.
USB or SD cards
DAMAGED PHOTOGRAPHS RESTORED ETC.**

BIRTHDAY AND CELEBRATION BANNERS



**VINYL BANNERS - BUSINESS CARDS -
SHORT RUN FLYERS
INVITATIONS - ORDERS OF SERVICE**

**B-W OR COLOUR PHOTOCOPIES
SELECTION OF PHOTO FRAMES**

Traditional Studio Portraits and Pet Photo's

CLOWS TOP GARDENING CLUB

What an entertaining evening we had in September with Simon Gulliver. (I am writing this before we meet in October). Simon talked about colour through the seasons. Not only is he knowledgeable, he is also very entertaining. Such a pity more people were not there to appreciate his pearls of wisdom.

September was also the occasion of our Autumn Show. A healthy number of exhibits were judged by Derek Walker, who very kindly stepped in as Marion was in hospital.

Now to November. This is the AGM, but, do not fear, the business part is speedily dispatched. We are then free to enjoy the Supper which is a Bring and Share Meal. We are also pleased to welcome Louise, from Angel Gardens, who will talk about Winter Containers.

This is the last meeting of 2024. We will be back at Clows Top Victory Hall on January 22nd, 2025, when we would like to welcome lots of new members. Only £10 annual membership! Such a small amount for access to all that horticultural knowledge and trips to interesting local gardens. Make joining the Clows Top Gardening Club one of your New Year's Resolutions! Questions? Contact Tracey on 07450-653920.

We hope to see you all on the 27th at 7 - 7.30 pm.

Judith Lawson

CONTACTING OUR MP

Stuart Anderson is certainly getting out and about to meet his constituents, issuing a list of surgeries where he'll be making himself available to listen, learn and advise. On November 15th he'll be here in Cleobury and on the 29th in Ludlow.

If you want to speak to the man face to face, you can make an appointment. No times or precise locations are made public before the event, as a matter of security, but you can contact his staff on 01584 872187, email stuart.anderson.mp@parliament.uk or his website www.stuart.anderson.org.uk

SPECIAL LOCAL KNOWLEDGE

I was in Heath Farms Meats, encouraged to take two more of their fine rump steaks after my lady told me that my offering the week before had been the best steaks she'd ever eaten. If an amateur like me can be given such praise, the quality of the meat was obvious.

I explained this to Sid, who asked when this was and the explained "That would have been Betty and this is from the other side of the heifer." They don't just breed the cattle from which the steaks come, they know it by name! Not quite what you get at the local supermarket, far less at some distant hypermarket. JR

SAINT MARY'S BEER FESTIVAL

Another great community event in the church. Our Beer Festival

took place over the weekend of 27th/28th September and many people and families came to enjoy the occasion. It was a real bonus to have the Cleobury Mortimer Concert Brass playing on Saturday afternoon – a chance for everyone to listen to them and Mums, Dads and children to dance to the music! Everything to do with the day was sourced from local traders and many were there on the day. Hobsons Brewery masterminded the beer side of things and without them we should certainly not have managed – thank you for a huge amount of work, expertise and beer! Thank you too to the many local businesses who sponsored the beer – a real community effort.

Most of all, thank you all for coming to support the event and enabling us to raise money for improvements to the church to make it a better place for everyone to be in. In the run up to Christmas we have the Remembrance Day Service on Sunday 10th November and the Community Carol Service on Sunday 22nd December at 6 pm. Put the dates in your diary and come and join us.

Liz Smith

NOT QUITE SO SILLY BIT

Some of the biggest cases of mistaken identity are among intellectuals who have trouble remembering that they are not God.

A man asked a fairy to make him more attractive to women, so she turned him into a credit card.



Find Your Smile at Cleobury Dental Practice

Whether you're looking for dental implants to replace missing teeth, invisible braces for a straighter smile, boosting your confidence with teeth whitening or a dedicated dentist for your regular care, you can find it all here in the heart of historic Cleobury Mortimer.

- Modern, state of the art facilities and the latest dental technology
- Free car parking adjacent to the practice and step-free access to our dentists' surgeries
- Enjoy private dental care from just 47p per day with our membership plans
- Highly experienced in helping those with dental phobias

Services Provided

- Tooth-Coloured (White) Fillings
- Sedation for Anxious Patients
- Teeth Straightening with Braces and Invisalign
- Dental Implants (Replacement of Missing Teeth)
- Emergency Appointments Slots Available (first come first served)
- Hygienist Services
- Private and NHS Care (NHS subject to capacity)

Opening Hours

Mon, Tue, Wed and Fri **9am-5pm**

Thu **9am-7pm**

Saturdays **by appointment only**

Tel: 01299 271 747

www.cleoburydental.co.uk

BDA Good Practice
Member

 **invisalign**
PROVIDER

CLOWS TOP VICTORY HALL

What a busy month September was. A Wildlife Club meeting, very well attended jumble sale, another successful barn dance, and our first ever family Halloween party.

Coming up we have our annual Christmas Fayre on Sunday November 24th, 10am to 1pm. The hall will be filled with stalls (sold out already) and all the usual refreshments. Plus live music from Trevor Wood. Father Christmas is also expected to visit us in his grotto.

On November 29th our final Wildlife Club meeting to end our 3rd year, sees Jack Ashton Booth from the Royal Society for the Protection of Birds talking to us about his work. In particular with satellite tagging and rough-legged hawks from south America. You don't have to be a member, just turn up.

That's about it for now. Many thanks to all who have supported us this year, we hope you see you in 2025.

Steve Woodison

CHRISTMAS FAYRE AT KINLET

The Village Hall at Kinlet is planning a big Christmas Fayre for November 9th. It will be open from 12.00 noon until 4.00 with Santa there to greet with a host of attractions. Take your pick from a tombola, raffle, dog items, candy floss, tarot readings, sweet stalls, face painting, arts and crafts, gem stones, woodwork from Shropshire trees, children's gifts, fused glass, jewellery from Ian Quartermaine, £20 vouchers from the Kinlet Kabin, chip shop

vouchers from Merchants, vouchers from the excellent Eagle and Serpent, a cash prize of £30 and many more, If you need to feed, the Kabin will be open until late as a special service.

All this in aid of Air Ambulance. Sounds too good to miss.

CLEOBURY CONCERT BRASS

We have really enjoyed performing at a couple of local concerts, St Marys Beer Festival and our own Fish & Chip concert on 12th October.

Next up is the Wychavon Entertainment Contest which we will be competing in on October 17th. Our theme is the music of Queen, I hope to report good results in the December edition.

Our next concert will be on 1st December in St Marys Church, this evening promises to get you in the festive spirit with an entertaining programme and a mince pie or two!

Tickets are available now from the ticket link on our website, from Hazel on 07904372775 or from Cleobury Wash House very soon.

To discuss options, please contact our secretary Amanda on 01584 891199

Katie Griffiths

ONE POT BARGAIN LUNCH

Neen Savage WI are holding a One Pot Lunch on Thursday 28th November from 12 - 2pm in Cleobury Market Hall. For just £5 enjoy a bowl of delicious stew - meat or veg options and a traditional pudding, whilst supporting Oak Care Farm.

There will also be a raffle. Please bring cash!

Catherine Evans

NEW NOTES CHRISTMAS CONCERT

The New Notes Singers will be holding their Christmas concert at Clee Hill Village Hall on December 7th. It starts at 7.00 to make travel easier in the winter weather, tickets are £8.00 and that includes tea or coffee plus cakes. Tickets at the door or from any choir member.

MELVILLE CHAPEL

Ruth Downes gives details of November events in the newly restored chapel:

Remembrance Service, 10th November 10.30a.m

Soup Lunch 13th November 12.30p.m-2.00p.m. Everyone welcome.

Christmas Craft Fair, with Oreton and Farlow Village Hall. 23rd November, 10.30 to 2.30 Lots of lovely Christmas Goodies to buy.

Ruth

THANK YOU

After our recent celebration of 60 years of marriage, we would like to thank family and friends for all the good wishes, cards and presents we received for our diamond wedding anniversary.

Jan and Dave Percival

SILLY BITS

A white horse walks into a pub and the barman says "Wow. We've got a scotch named after you."

"What?" Says the horse. "Eric?"

Camping. Where you spend a lot of money to live like a homeless person.



RED  HARE

45 HIGH STREET
CLEOBURY MORTIMER
WWW.REDHAREALON.CO.UK

01299 270702

YOUR
HAIR
IS
OUR
BEST
ADVERT

PPD FREE - PARABEN FREE - SULPHATE FREE - CRUELTY FREE

"Red Hare now offers a private hairdressing room. Perfect for those wanting more privacy, peace and quiet"



Sue Brown
MA MSc DC MMCA
CHIROPRACTOR

Hands for Heroes
Free Chiropractic Care for War Veterans



GCC registered
General Chiropractic Council
www.gcc-uk.org

CLEOBURY CHIROPRACTIC

31 High St. Cleobury Mortimer DY14 8DQ

We offer both **CHIROPRACTIC** and **OSTEOPATHY**,
using gentle methods suitable for all ages.
Appointments available outside of normal working hours.
Both practitioners are fully registered, insured & regulated.

- * BACK PAIN * SCIATICA * POSTURAL PROBLEMS
- * JOINT PAIN * HEADACHES (arising from the neck)
- * Some SPORTS INJURIES

PLUS * COMPUTER (DSE) WORKSTATION ASSESSMENTS
* BACK CLASS – Weekly exercise class for those with back/neck pain.



01299 519351 / 07932 000028 / 07506 287191

www.notjustaboutbackpain.com

www.jsosteopaths.co.uk

JS James
Smith
OSTEOPATHS

iO
THE INSTITUTE
of OSTEOPATHY



THE BREAKFAST CLUB

October 8th was the 35th anniversary of the first meeting of the Club, and also the day when 20 members met at the Golf Club to hear Jackie Handy tell us something of the delights and pains of her recent walk along the *Camino de Santiago*. Many will have heard of the famous pilgrim routes, starting from numerous European towns, but all leading to Santiago de Compostela in north-western Spain, where it is believed the remains of Saint James are interred in its cathedral.

Jackie explained that she wished to do the walk from St Jean Pied de Port in France, covering up to 35 km each day and carrying her own clothing etc in a backpack, to raise money for Dementia UK. Pilgrims are well catered for, with *albergues* along the route in which pilgrims can stay overnight for about €20, which also covers an evening meal. As with any serious walking, footwear is all-important, and Jackie obviously chose well, as she reached Santiago de Compostela in 32 days without boasting a single blister – after walking over 800 km (500 miles).

To get a certificate of completion (or *compostela*) pilgrims must get their 'pilgrim passport' (or *credencial*) stamped

at some of the numerous shops and churches along the way, and must clock up at least 100 km, and two stamps daily. Jackie graphically described and illustrated the splendid scenery along her route, and high-lighted the sense of *camaraderie* which develops amongst the walkers.

The Club's next meeting will be at the Golf Club on 12 November, when Paul Kemp will explain the work he does on 'Mediation'. Anyone wishing to attend should contact Angela Drennan (270636).

Mark Baldwin

The Friends of St Mary's Church Cleobury Mortimer present:

The Birmingham Philharmonic Orchestra at St Mary's Church Cleobury Mortimer

On December 8th we will be hosting a visit from the Birmingham Philharmonic Orchestra who will be performing at St Mary's Church at 7.30 pm. This is only possible due to the generous support of John and Judy Sant and will be a rare opportunity to see them without travelling. The works they are planning to perform are as follows:

Beethoven: Corolian Overture.

Bruch: Violin Concerto No 1.

Brahms: Symphony No 3.

The soloist will be Charlotte Moseley (violin) and the Conductor will be Michael Lloyd. As always, this programme may be subject to change.

Those who have attended past performances will know how the music soars in the beautiful and historic surroundings of St Mary's so an uplifting evening is in store.

Tickets are available from the usual outlets in Cleobury Pharmacy, Library and Spire Hairdressers as well as Friends Committee members or on the door (if still available) and, new for this year, there is a dedicated E Mail address for online ticket orders which is: cmthefriends@gmail.com

Tickets will cost £20 each to include a drink and numbers will be limited to the safe capacity of the venue so if you are intending to come, please book early to avoid disappointment.

Steve Todd.

SILLY BITS

Do all fairy tales begin with "Once upon a time"?

No, many more of them begin with "If I am elected , I promise....."



UPHOLSTERY & INTERIORS

Rosemary Jones

Mob: 07837 609229

Phone: 01584 861823

Email: info@charltoninteriors.com

www.charltoninteriors.com

MOBILE FOOT HEALTH CARE

A thorough nail and foot care treatment in the comfort of your own home.

Registered and Insured practitioner.

Karen F H Di, RFH

07378 122788

Do you have a Will? Never managed to get it written?

Writing your Will and planning for later life can feel like a daunting process...

It doesn't have to be!

I guide you through the process of writing your Will and Lasting Powers of Attorney

Call me now to find out how I can help

07966366505



I'm Stephanie

The Will Writing Group



07966366505 | Info@thewillwritinggroup.co.uk | www.thewillwritinggroup.co.uk



Electrical installations from domestic to commercial and industrial no job to big or small.

Over 16 years experience.
Local family run business.

Contact: Phone 07872498829
Email lee.leapelectrical@gmail.com



Friendly, honest tree surgeon serving
Bewdley and surrounding areas.

**Contact Isaac
for a free quote!**

**Mob: 07845 615 806
Tel: 01299 513 448**

All Aspects of Tree Work
Stump Grinding

Hedge Trimming/Reducing
Grounds Maintenance

Logs &
Woodchips

Qualified

Insured

Tidy

Email: elphicktreeandgarden@gmail.com Web: www.elphicktree.co.uk

CLEOBURY W.I.

As Autumn arrives it is time to turn our attention to Remembrance Day and with this theme in mind the WI welcomed Nick Perry, a representative from the Commonwealth War Graves Commission to talk to our October meeting. We were delighted to welcome so many visitors from both the Royal British Legion and the local community. The generosity shown for refreshments that evening raised £74 for the Old Comrades Fund within the local RBL branch.

On a lighter note, the WI enjoyed an outing to the Regal in Tenbury to reminisce on our youthful moments watching the original Grease film starring John Travolta and Olivia Newton-John. It certainly brought back many memories of life in the late 50s.

The next two months will be busy for WI members as they embark on one of their fundraising events; the Winter Warmer Soup Lunch on Wednesday 6th November in the Parish Hall from 12–2pm. Everyone is welcome, payment is on the door, £5 for soup and

bread and a choice of lovely desserts. Watch out for the launch of all the lovely new condiments sets which took part in the recent WI competition!

The WI will be represented at the Remembrance Day Parade on Sunday 10th November and laying a wreath to pay their respects to war veterans both locally and nationally.

The next official WI meeting will be held on Tuesday 12th November at 7.30pm. The theme will be Christmas Foliage Decorations delivered by Bill White welcomed from Far Forest.

Future WI events:

A visit to the Magna Chocolate Factory on Thursday 14th November

Morning Coffee on Thursday 21st November at Burford Garden Centre @ 1030am

Please contact Judy on 01299 270983 or email judysant10@gmail.com for further information on joining our WI. Check out the Cleobury Mortimer WI Facebook page.

Sally Serrell-Cooke

THE READING GROUP

This month's book was Wolf Winter, a debut novel by Cecilia

Ekback. Set in Sweden in the early 1700's it starts with the arrival of a Finnish family at a remote settlement in Sweden dominated by a mountain that is viewed as threatening. Their daughter discovers a dead body—probably murdered by a person rather than killed by an animal. The story covers what happens through the very harsh Wolf Winter. It then becomes a who dunnit with spirits, talking ghosts and involvement of the Church.

Most of us enjoyed her vivid descriptions and enjoyed the read but some found it very dark. It certainly provoked some active discussion.

David Ogden

NORTHERN SOUL DISCO

18th November at 9.00

The Parish Hall is hosting a Northern Soul disco with local DJ Paran. Rediscover the lost years of your youth – or discover anew some of the best music of last century – and dance the night away. Tickets £5 on the door at 9.00pm. Bar open throughout.



Home Support Services

All staff enhanced DBS checked with over 20yrs experience and training within the local authority/social services mainstream and dementia care sector. Fully insured.

Are you in need of support with the following basic day to day tasks?

Assistance during the day or night	Completing Forms
Companionship	Pet Care
Shopping/Household tasks	Attending social events/ appointments

Contact Liz
Tel: 01299 271623
Mob: 07826 929222
liz@livelifeathome.co.uk

Other support services available on request.

www.livelifeathome.co.uk

Contact Tracey
Tel: 01299 211660
Mob: 07957 659909
tracey@livelifeathome.co.uk



Traditionally handcrafted bespoke oak frame buildings



Here at Hopton Oak we
design, build and install:

- Stables
- Porches
- Garages
- Extensions
- Garden rooms
- Conservatories
- Gazebos and Pergolas



Contact us to discuss your oak frame project or any questions, the team will be happy to help.

hoptonoak@outlook.com | 07951041977 | hoptonoak.co.uk  Hopton Oak



WINDSOR PRICE REPAIR SHOP Automotive

Email: mikeytwonames@icloud.com
Tel: 01299 213558
Mobile: 07513 821616

Unit 1, Hillocks Farm,
Cleobury Mortimer, DY14 0EB.



IRENA'S FOOT CLINIC

OVER 30 YEARS EXPERIENCE AS A QUALIFIED FOOT HEALTH CARE PRACTITIONER
PROFESSIONAL TREATMENT IN THE COMFORT OF YOUR OWN HOME OR MY SURGERY

- Nail trimming
- Ingrowing toenail treatment
- Fungal infection treatment
- Nail reconstruction
- Callus reduction
- Corn removal
- Athletes Foot treatment
- Verruca and wart treatment

CONTACT IRENA ON 01299 270212 and 07789070629
1 FURLONGS ROAD, CLEOBURY MORTIMER DY14 8AR



Stepping Out! Who's walking, where and when.

ROCK PATHFINDERS

Two walks this month for this enthusiastic local group: Thursday the 7th, starting at **10am from** Blackstone Picnic Car Park, off the A456 Bewdley DY12 1PU

Thursday the 21st, starting at **10am, from** The Fountain Inn, Oldwood, Tenbury Wells WR15 8TB

For further details and any other announcements or changes please visit website www.rockpathfinder.s.uk

Sue Humphries

THE FOOTPATH ASSOCIATION

As we move rapidly into Autumn, CMFA continues to look after footpaths around Cleobury Mortimer. We are relieved to have a reprieve from clearance of weeds although some hardy greenery has crept back on some paths. Secateurs are with me at all times!!!

Seven walkers altogether, including two visitors to the area, joined our Sunday country walk. The weather was cloudy but fortunately stayed dry.

CMFA's "Hobson's Choice (Walk 9), was the chosen route. It was quite energetic with some steep climbs, however the views on this route can be spectacular, making the climbs worthwhile. The Abberley hills, Abberley clocktower and The Malverns can be seen from high points on the route and the changing colours of the autumnal trees add to the beauty of the scenery.

All our walk leaflets can be bought locally and can also be printed from our website or downloaded from Outdoor Active website.

Thank you so much to all our footpath guardians who have adopted a path or route to look after and to those who help us keep paths in good condition.

Please let us know if you encounter any issues on footpaths around the area. Our work parties also continue tirelessly - repairing, building, installing and improving, giving their time freely to ensure walkers can enjoy our beautiful paths.

If you enjoy walking and would like to join our group, please contact us. We walk locally the first Sunday of every month, meeting outside the church at 10.00am. Please visit our website for further information.

Help is always welcomed to help maintain walking routes around Cleobury Mortimer. If you would like to offer your services, please contact us through our website or zellcmfa@gmail.com

Joy Wilkinson

SILLY BIT

Women spend more time wondering what men are thinking than men spend thinking.

Firewood

Seasoned logs, barn dried & ready to burn.

Free local delivery -01584 890993 or 07970878224

Various size loads available



Paul Harding Tree Services





FRI 22 NOVEMBER
9pm - tickets £5 on the door

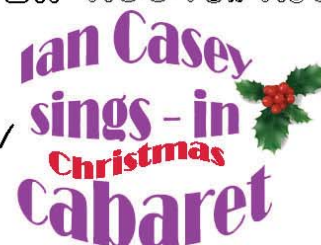


Tickets £15
2-course meal.
Bar, tea and coffee

6 DECEMBER 7.00 FOR 7.30

After the success of last year's concert, back by popular demand.

www.cleoburyparishhall.uk/
cabaret
01299 271713



Cleobury Mortimer Parish Hall is the largest in the area

Would you like to celebrate an event, party, wedding, or just a get together?
We are able to cater for small or large parties, sit down dinner parties for up to 100 people with or without a bar.

Come and have a look at what we can offer. To book, call Robert on 01299 270047

 www.cleoburyparishhall.uk

 [cleoburymortimerparishhall](https://www.facebook.com/cleoburymortimerparishhall)



Set on a remote island off the west coast of Ireland, **THE BANSHEES OF INISHERIN** follows lifelong friends Padraic (Colin Farrell) and Colm (Brendan Gleeson), who find themselves at an impasse when Colm unexpectedly puts an end to their friendship. A stunned Padraic, aided by his sister Siobhan (Kerry Condon) and troubled young islander Dominic (Barry Keoghan), endeavours to repair the relationship, refusing to take no for an answer. But Padraic's repeated efforts only strengthen his former friend's resolve and when Colm delivers a desperate ultimatum, events swiftly escalate, with shocking consequences.

Saturday 16 November 7.00 for 7.30 Tickets £5 - Bar, tea, coffee, cake



Care At Home

TLC Care at Home are a well-established family run, Home Care Provider who have built up an excellent reputation within our local communities

We have recently been rated as **OUTSTANDING** by CQC and this puts TLC Care at Home in the top 3% of providers in England



Professional care and support in your own home

Our dedicated Care Team are here to help support you with 24/7 care provision should it be required. At TLC Care At Home, we are dedicated to supporting people with wide range of needs, including Dementia, Acquired Brain Injury, Physical Disabilities, Learning Disabilities, Sensory Impairments and supporting our aging population.

Depending on your individual needs, we can offer varying degrees of support from young adults to very mature people. TLC Care at Home are here to help anyone who requires care and support to enable them to remain living at home for as long as it is safe to do so.

Comprehensive range of care services

- Domiciliary Care
- Palliative care
- Personal care
- 24 hour care
- Companionship
- Dementia Care
- Overnight Care
- Elderly Care
- Care for young adults
- Supporting younger people
- Domestic services: cleaning, cooking, washing and shopping
- Collections of pensions or prescriptions
- Trips out and about

Please contact us now for more information **01299 272 897**
Email: wecare@tlc-careathome.co.uk
Website: www.tlccareathome.com



THE BEACON ON THE HILL

The project is making big strides in creating a new community space and heritage gateway in Doddington. Conservation builders have begun vital work at St John's to repair floors and windows while creating a new servery and display spaces along with a toilet and some improved heating.



Some of the tiles that will be used in the new server.

This month local ceramicist Sue Dawes has been leading workshops for people to create new tiles inspired by the Victorian ones in the church. These tiles will be used in the new servery area and reflect the church's history using impressions made by leaves and found objects. Everyone

who came to add their touch to the church also made tiles to take home.

On 23rd November we will be making Christmas wreaths from holly and ivy collected from the slopes of the Clee hills. These plants have some fascinating folklore attached to them which artist Suzanne Thomas will share as she leads the session. To book visit <https://www.ticketsource.co.uk/st-johns-church-doddington-south-shropshire/t-avgqlkk>

Our songwriter in residence Sid Peacock has been busy working with local groups to write works for the *Song of the Hill*. He is now looking for local singers and musicians to help bring these Clee Hill songs to life. If you have a talent and would like the experience of working with others to perform in the grand finale in May, please contact sidpeacock@gmail.com

The new St John's website has gone live and features work by schools, colleges and volunteers all celebrating the heritage of the area. stjohnsdoddington.org will grow and develop as more people share their stories and collections. Take a look and let

us know what you think or if you have anything to contribute.

The Clee hills have such a rich community heritage, if you want to get involved in celebrating this the *Beacon on the Hill* team would love to hear from you. Get in touch with Jim or Celia stjohnsdoddington@gmail.com
Jim Grevatte

POTHOLE OF THE MONTH



If you're driving out to Heath Farm Meats from Kinlet, the road seems to deteriorate a little more with every trip. We chose this rough strip because it's visible, but under the more wooded stretches it's not easy to see what you're heading for before you feel the crunch and vibration.

Plans to repair this highway? With the county on the edge of bankruptcy, little hope of that.

Lower St Garage

7 Lower St, Cleobury Mortimer. DY14 8AA



- M.O.Ts on cars, motor bikes & small commercial vehicles
- Tyres, Tyre fitting,
- Puncture repair and Tracking.
- Diagnostics, Air conditioning
- Welding.
- Service and Repairs to most vehicles.
- Delivery and Collection Service Available

Contact The Team at Lower St Garage on: 01299 270208



2025 CLEOBURY COUNTRY LIFE
www.cleoburycountrylife.co.uk

Discover local businesses, things to do & places to eat and drink...

DISCOVER BY CATEGORY	USEFUL NUMBERS
<ul style="list-style-type: none"> ACCOMMODATION, CAMPING & CARAVANS ARTISTS, DESIGN AND PHOTOGRAPHY BUILDING SERVICES AND TRADESPEOPLE CHILDCARE AND EDUCATION COMMUNITY AND DOMESTIC SERVICES FINANCIAL AND LEGAL SERVICES FOOD RETAILERS AND LOCAL PRODUCERS GARDENING AND HORTICULTURE HAIRDRESSERS, BARBERS & BEAUTICIANS IT, TELECOMS, BUSINESS AND SUPPORT MANUFACTURING AND FACTORIES MEDICAL TREATMENTS AND THERAPIES MOTORING AND TRAVEL PETS AND ANIMALS PUBLIC HOUSES AND RESTAURANTS SHOPS AND RETAIL SPORTS AND LEISURE TOURIST ATTRACTIONS AND ENTERTAINMENT VENUES FOR HIRE 	<p>Council Shropshire Council 0345 678 9000</p> <p>Health Cleobury Dental Practice 01299 271 747 Cleobury Medical Centre 01299 270 209 Cleobury Opticians 01299 270 012 Cleobury Pharmacy 01299 270 219 Shropshire Audiology 01743 261 482</p> <p>Emergency Services & Utilities For all non-emergencies 101 In an Emergency 999 Severn Trent 0800 783 4444 Western Power 0800 6783 105 or 105</p> <p>Schools and Sport Bayton C of E Primary School 01299 832 383 Cleobury Primary School 01299 270 313 Cleobury Sports & Fitness 01299 271 317 Farlow C of E Primary School 01746 718 661 Kinlet C of E Primary School 01299 841 210 Lacon Childe School 01299 270 312 Stottesdon Primary School 01746 718 769</p>

Cleobury Country sits on the borders of Shropshire & Worcestershire and is known as 'The gateway to the Shropshire Hills' with some of the best scenery to explore.

Delivered annually to over 1500 homes & businesses in and around Cleobury Mortimer and available online

Spread the LOVE, let a business know you found them here!

Follow us on Social Media for SPECIAL OFFERS from local businesses and local news and events

INSTAGRAM @cleoburycountrylife

FACEBOOK @cleoburycountry

Super Glossy A4 6 page booklet

The Trade Card for 2025 is in the making!!

- QR codes to link to facebook, instagram and website pages,
- the usual business listings in helpful categories
- an alphabetical listing for easy finding
- local useful numbers for groups, venues, etc

Option 1: £50 + VAT

A Listing: up to 30 words listed under the category of your business and a listing on the alphabetical list on the back page

Option 2: £120 + VAT

A Box Advert: 93mm wide x 45mm high, in colour and a listing (as per above)

We are planning to print 2000 so that we can still hand deliver 1300 to Cleobury Mortimer households, but we will also put a stock into local places, like the golf club, libraries, and the usual Cleobury Clarion collection points in and around the town.

To be included give us a call on 01299 272300 or email us at business@cleoburycountry.co.uk



Comfortable and spacious pens for single or double occupancy
fully licenced by Shropshire Council

visit our website: www.purrfectcattery.co.uk

Contact us on: 01299 270565 or mobile: 07968 111415

Or email: enquiries@purrfectcattery.co.uk

THE VANISHING SIGN

'It was a dark and stormy night'. Oh, hang on, apparently these are the words that established authors say you should never ever use at the start of a story. So I won't. 'Once upon a time'. That's much better and clearly has never been used before so it will be perfect. This case concerns the removal (theft?) of a sign advertising the Borders Classic Bike Show at Lacon Childe school from the roadside near the cemetery. One day it was there and the next it wasn't. A comprehensive search failed to locate it and enquiries, aided by the ever helpful Town Council narrowed the possible perpetrators down to Shropshire Council and in particular Bridgnorth Highways.

For context, this was a new sign, one of two, to replace the near 40 year old originals as they were showing their age. The frames of the replacements had been lovingly hand crafted from rare and exotic timbers (OK, they were bits of old pallet) but the inspiration and ageless skill that went into their construction resulted in a work of sheer genius although data protection rules prevent me from mentioning who the craftsman was. Anyway, Bridgnorth Highways were contacted and responded promptly- surely a first for Shropshire Council- to say that they had taken it 'for health and safety' reasons and because 'a complaint' had been received and it was currently at a depot in Shrewsbury. If only 'a complaint' was acted upon this swiftly in the case of potholes...This was followed almost immediately by another message to say that there was no point in going there as there is no public access.

This whole affair strikes me as strange as its identical twin at the bottom of town was untouched nor were a number of other roadside notices on various verges 'twixt here and Ludlow so why pick on ours?. Whilst it is true that some signs are placed and never removed thus

becoming an eyesore, the bike show ones are always removed by the day after the event. A later message said that the sign was now outside a different depot in Shrewsbury where it would stay for a week before being destroyed. As I didn't fancy a 70 odd mile round trip to get it, I asked if it could be moved nearer and offered several possibilities to achieve that as well as suggesting that perhaps a code of conduct could be agreed to facilitate the use of such temporary signs but prevent long term flyposting etc. So far the response has been total silence so I can only assume that the notice is no more.....The correspondence also mentioned that displaying a sign in such locations requires a licence but these are never granted so don't bother applying.

No doubt you are all familiar with the provisions of section 1(1) of the Theft Act 1968 which states that an offence is committed if a person appropriates the property of another with the intention of permanently depriving the other of it. It could be argued that sticking it on a verge 35 miles away is an intent to return it but I'm not sure this is a get out. After all, If I took your car and later said you could have it back if you travelled to Albania to collect it, I don't think that counts. And, as to us in Cleobury, Shrewsbury is much like Albania, I rest my case officer..

I will update you of any developments should the Editor or any reader be misguided enough to be interested. Now what happened to the rest of those pallets...

P.S. Just found a sign still being displayed which warns of a road closure in Lion Lane on 12th September. The poster?. Shropshire Council. But fear not chaps, I have safely removed it for you and should you want it back it will be available for collection in Cleobury for 7 days following 'Clarion' publication after which time it will be destroyed...

Steve Todd



FOR ALL YOUR ACCOUNTANCY REQUIREMENTS

www.fairway-accountants.co.uk

Head Office: 01299 822283
team@fairway-net.co.uk

Simon Hector: 07896 439594
sjh@fairway-net.co.uk

BOILER INSTALLATIONS

GAS, LPG & OIL BOILER SPECIALISTS

UPGRADE YOUR OLD BOILER TO AN A-RATED BOILER & SAVE UP TO £580 A YEAR ON YOUR ENERGY BILLS

"Excellent service! They turned up when they said they would, and did what they said they would, going the extra mile when necessary. I highly recommend this company!"

WORCESTER
Bosch Group
Accredited Installer



SHELTER-ADAMS LTD

0800 6124 109 | 07990 523 790
enquiries@shelter-adams.co.uk



0% Finance & Interest
Bearing options available
on boiler installations!
11.9% Representative APR

Locally based family run business in the Heart of Worcestershire

HOPTON BANK SERVICE STATION

- Car servicing & Diagnostics
- MOT testing
- Clutches/brakes/tyres/batteries
- Car sales
- 24 hour petrol station

Contact Number: 01584 890225



Number Nineteen
No.19
Dental Laboratory

Denture Repairs

SPEEDY, QUALITY DENTURE REPAIRS

Cracked/broken dentures repaired the same day.

A 1 HOUR service is available for when time is of the essence, just call to make an appointment.

19 Lower Street, Cleobury Mortimer, DY14 8AL

Email: nevilleweaver@googlemail.com

Phone: 07973856733

All work undertaken by a GDC registered technician



A.B. Plastering
Plus Traditional Lime Plastering

Adrian Booton
PLASTERER

4 Severne Green, Bayton
Nr Kidderminster, DY14 9LL

Tel: 01299 832 838
Mobile: 07974 582 524



Rob and Annie look forward to welcoming you to
The Fighting Cocks Inn, Stottesdon.

Why not pop along for a drink and some delicious food. We have regular live music, so please keep an eye on our Facebook page.

Our opening hours are:

Wednesday – Friday from 5pm – 11pm
(food served from 6pm – 8.30pm)

Saturday from 12 noon – 11pm
(food served from 1pm – 7.30pm)

Sunday from 12 noon – 10pm
(lunch from 12 noon – 3pm)

The Fighting Cocks Inn, 1 High Street,
Stottesdon, Kidderminster DY14 8TZ.

Telephone 01746 718270

A WARM WELCOME AWAITS YOU.



What can a Nutritionist help with?

- Digestive issues
- Chronic Fatigue
- Sleeping issues
- Painful periods
- Menopause
- Migraine
- Type 2 Diabetes
- High Cholesterol
- Skin Conditions
- Children's Health
- Anxiety/Depression
- Vegan/vegetarian diets
- Weight Management
- plus many more

Visit www.eatyourselfbetter.co.uk to find out more or book a free mini consultation to see what I can do to help you. 07790521636

TIME TO CLEAN YOUR OVEN? LET US DO THE JOB YOU HATE

AS SEEN
ON TV

- Ovens
- Grills
- Extractors
- Filters
- BBQs
- Microwaves
- Hobs
- Ranges
- AGAs

Call or go online today for your free estimate

OVENCLEAN
The original oven cleaning specialists

07913 123543
ovenclean.com



INFINITE ELECTRICAL SOLUTIONS

For all your electrical needs:

House rewires

Fuse board upgrades

Electric showers

Need an extra socket or light installed?

No job too small

For a FREE quote

Call Lloyd 01584 811184



Richard Haines

The Worcestershire Chimney Sweep

- ♦ Traditional & Power Sweeping Services
- ♦ Certified Chimney Sweep
- ♦ Insurance Recognised certificate issued



M: 07752 116629 T: 01584 781358 E: lostcity5@hotmail.co.uk

www.theworcestershirechimneysweep.co.uk





The acorns and beech nuts have fallen, birds have eaten the rowan berries and the last blackberries have shrivelled on the bramble bushes. The colour is gradually draining out of the forest but the wild service trees still stand out in the forest like orange flames and holly berries glow among the spiky green leaves.

Male and female fallow deer have gone their separate ways after the rut and most mammals are now making themselves ready for the winter. Badgers will renew the bedding in their underground setts and moles will line their chambers with dry grass and moss, in plentiful times adding a store of worms, decapitated and tied in a knot! (See *Fauna Britannica* by Stefan Buczacki). Other creatures also make stores of food. Perhaps you may come across a cache of cherry stones belonging to a wood mouse or find acorns buried by a squirrel or jay. For some their food is available all winter and they have to stay active to get it.

One such is the weasel, which follows the paths and tunnels of mice, voles, shrews and to hunt them down. The weasel is the smallest of Britain's mustelids: the family they share with stoats, polecats, martens and badgers. The Latin generic name – *Mustela* - comes from 'mus' (mouse) and 'telum' (javelin), ie a long, thin and fast mouse! An adult is 6 to 8.5 inches long, the males being larger than females. It is a law of physics that a large hot body will retain its heat longer than a small hot body and, being so small, weasels have to eat one third of their body weight every 24 hours to replenish their energy. In a year when their rodent prey have bred successfully they

too will flourish. (A bank vole can have four or five litters a year and the young become sexually mature in four to five weeks. I don't know how well they've done this year but I would have thought that anything trying to rear young whether in a nest above ground or a burrow below would have run the risk of being washed out). Weasel mothers have four or five kits in spring but when food is abundant they may have a second litter in July or August.



What a fine specimen, captured by Keven Law.

At this time of year young weasels will be leaving their parents to strike off on their own and you may be lucky enough to catch a glimpse of these quick little creatures crossing a road or path just ahead of you. Such an encounter would have been thought definitely unlucky in other times and in some other cultures. It's a pity that these fierce but attractive little animals have such a bad reputation, from the ruthless criminals in 'The Wind in the Willows' to the term 'weasely words' meaning vague, equivocal or just downright misleading!

Linda Iles



Grainger Jones your local independent financial adviser

Grainger lives in Cleobury Mortimer giving the residents and surrounding areas a dependable financial planning service.

- **Wealth Management**
- **Retirement Planning**
- **Investments & Savings**
- **Family & Business Protection**

An initial consultation is available at no charge

To book an appointment or just have a chat, please contact Grainger below.

tel: 07974 100089

email: grainger@meridenfp.co.uk

website: www.meridenfp.co.uk



BAGGINSWOOD

Bagginswood, Cleobury Mortimer,
Nr. Kidderminster, Worcs. DY14 8NB

Telephone: 01746 718732

Heath Farm Meats, Bagginswood

Opening Hours

Wed 8am to 5.30pm, Thurs 8am to 7pm, Fri 8am to 5.30pm, Sat 8am to 12.30pm

Straight from Our Farm to Table

We rear & sell all our own beef, pork, lamb & mutton through our shop on farm.

We also make our own flavoured sausages, burgers, home cured bacon, gammon etc. No order to large or small.

Hams ● All Poultry ● Honey ● Mawley Milk & Cream ● Ashley's Cakes & Bread ●
Jams ● Eggs ● Cheeses ● Apple Juice ● Potatoes ● Meat Pies ● Sticks & Logs

Telephone 01746 718732 with your order to arrange a date & time for collection



TURNERS GATES

bespoke sizes at standard prices



A small family run business specialising in quality wooden gates to suit all entrances.

Visit our website: www.turnersgates.co.uk

Drop us an email: turnersgates@outlook.com

Or give us a call on: 01299 270 965





Ahead of writing to you, I have announced my decision to return to the backbenches after the conclusion of the leadership contest. It

months. I am raising the issue of rural connectivity in partnership with the local council to seek investment from the Government for areas like South Shropshire. I have also been raising rural concerns in Parliament, for example speaking up for the many students affected by the new government's decision to impose VAT on independent education. This will impact almost a thousand pupils in South Shropshire who attend schools like Concord College, Bedstone College, and Moor Park, as well as increasing the pressure on state schools.

has been a great privilege to have served three Prime Ministers and a Leader of the Opposition in the Whip's Office since 2022. I have shared responsibility for coordinating my party's contribution to parliamentary business. I am looking forward to the opportunity that returning to the backbenches affords me to dedicate more time to South Shropshire.

As autumn descends, inclement weather has returned and resulted in flash flooding across South Shropshire. This has greatly affected villages such as All Stretton, where I have seen its impact first-hand. Following my visit, I have called on the government to drive down flood risk from every angle and take urgent action to help those impacted. This can be achieved, for example, by reforming the Flooding Recovery Fund so that support is more easily activated following localised flooding.

I have greatly appreciated meeting those who attended advice surgeries I have held across the constituency. My team and I have been following up on requests, as well as many others I have received via email, phone, and letter. In the coming months, my surgeries will be touring other parts of South Shropshire. Head to my website or get in touch to find out when I'm in your area.

One of these key issues has been on mobile phone signal and broadband connectivity. I am delighted that after engaging with Openreach and EE, we were able to get a phone mast fixed in Stanton Long, which covers a lot of Much Wenlock and had been out of service for several

Since the General Election, youth unemployment has sadly increased in South Shropshire. I want to see this worrying trend affecting rural communities like ours changed for the better. So, I used the Department for Work and Pensions Question Time in Parliament to hold Ministers to account on this. While I welcome the government's intention to deliver a plan to address this topic, I want to see a clear focus included on rural communities.

It has been great to meet with people and support the many communities in South Shropshire. I enjoyed my visit to Dorrington Village Hall for the Macmillan Coffee Morning, as well as joining the Friends of Stanmore Country Park for the unveiling of a hand-crafted listening seat and enjoying the local delights on display at the Ludlow Food Festival. I have appreciated meeting with local mayors and councillors to get an insight into the challenges faced in their areas.

Households across Shropshire will be feeling the impact of increased energy costs this winter, especially following the removal of winter fuel payments from those not in receipt of means-tested benefits like Pension Credit. I am glad my campaign to extend the Household Support Fund has resulted in an extra £2 million for struggling households across Shropshire. It will empower the Council to continue supporting those in need with the cost of everyday essentials like energy. I would also encourage anyone who may be eligible to apply for Pension Credit so they can receive support this winter.

Stuart Anderson

Mark Pearce

Landscape, Design and Rustic Garden Furniture

- Fencing
- Patios
- Drives
- Decking
- Garden Sheds
- Summer Houses
- Fence Panels
- Log Stores



And Much More

Top Quality Fully Treated Timber Products

Mobile: 07875425028

Tel: 01746718404

Robert Bradley Logs

07794 798616



*Seasoned Firewood, Hardwood,
Softwood or Mixed loads of logs.
Free Local Delivery*



Fresh milk and cream from
Cleobury Mortimer

www.mawleytownfarm.co.uk

01299 270359



CAROLE CLAYTON

INDEPENDENT FUNERAL CELEBRANT



07971 543790



celebrant@preciousmemoriescelebrant.net

Find us on Facebook
[@preciousmemoriescelebrant](https://www.facebook.com/preciousmemoriescelebrant)

UK Enterprise Awards
Funeral Celebrant of the
year 2023 (Worcester)

Shropshire, Herefordshire &
Worcestershire.



Cleobury Mortimer Benefice
Church services throughout the Benefice in November

St Mary's Cleobury Mortimer

Sunday 3rd November: 10.00am Family Eucharist
Sunday 10th November: 8.30am Said Eucharist
10.45am Service of Remembrance in Church following the parade.
Sunday 17th November: 10.00am Parish Eucharist
Sunday 24th November: 10.00am Parish Eucharist

Every Wednesday: 10.00am Eucharist
Every Thursday: 10.00am – 11.30am: Drop in at St Mary's. Drop in for a free cup of tea or coffee.

St Michael and All Angels', Hopton Wafers

Sunday 3rd November: 9.30am Parish Eucharist
Sunday 10th November: 10.00am Remembrance Service

St John's, Doddington

Sunday 3rd November: 11.00am Parish Eucharist
Sunday 10th November: 10.55am Remembrance Service
Sunday 17th November: 3.00pm Evening Prayer

All Saints', Neen Sollars

Sunday 3rd November: 11.00am Village Worship
Sunday 10th November: 10.50am Remembrance Service
Sunday 17th November: 11.00am Village Worship
Sunday 24th November: 11.00am Village Eucharist

St George's, Milson

Sunday 3rd November: 6.00pm Evensong
Sunday 10th November: 10.50am Remembrance Service

St Mary's, Neen Savage

Sunday 3rd November: 6.00pm Evensong (BCP)
Sunday 10th November: 10.50am Remembrance Service
Sunday 17th November: 9.00am Parish Eucharist (BCP)

St John the Baptist, Kinlet

Sunday 10th November: 10.30am Remembrance Service
Sunday 24th November: 6.00pm Evening Prayer (BCP)

Leadership Team:

Rector: Reverend Prebendary Ashley Buck: 07477 165602
Curate: Reverend Sarah Lupton
Church Office: Open Thursday 8.00am – 4.00pm
Email: cleoburychurch@hotmail.com Website: www.cmbenefice.com



FLOWERS by FIONA
07875-077941

SPECIAL OCCASIONS
WEDDINGS & FUNERALS

FBK ~ Instagram ~ WhatsApp



Soft furnishing and
Interior Design Services

Masquerade
Fabrics Limited

01299 271 680

36 High Street Cleobury Mortimer near Kidderminster
Worcestershire DY14 8DQ

Retailers for Sanderson, Harlequin, Monkwel
Crowson and many more...
Comprehensive design, measuring and fitting service.

TDC CARPENTRY SERVICES

Fully insured qualified professional
Excellent workmanship and quality customer care
From hanging doors, fitting kitchens to bespoke projects

Tim Clare - 07890 519980



AMY'S FOOT HEALTH
FOOT HEALTH PRACTITIONER
AMY FRANCE DipFHP, MCFH

Services include:

- Routine Nail Trimming
- Callus Reduction
- Corn Treatment
- Fungal Infection Treatment
- Cracked and Dry Heal Treatment
- Thick Nail Reduction
- Ingrown Nail Treatment
- Cream and Massage
- Medical Pedicure
- Pedicure
- Lower Leg and Foot Massage

MOBILE: 07925 236221 ASK FOR AMY OR LEAVE A MESSAGE

HANDY MATT

FOR ALL THOSE JOBS YOU NEED DOING OR NEVER GET DONE AROUND THE HOME AND GARDEN!

CALL ME TODAY AND GET THEM DONE.

RESTORATION, ROOFING, GUTTERING, BRICKWORK, REPOINTING, CARPENTRY, INSULATION, DECORATING, TILING, FLOORING, DAMP PROOFING, STOVE FITTING, GROUNDWORKS, LANDSCAPING, PATIOS, FENCING, GARDEN MAINTENANCE.

TEL: 07731 459631



BAGGINSWOOD

Bagginswood, Cleobury Mortimer,
Nr. Kidderminster, Worcs. DY14 8NB
Telephone: 01746 718732

Heath Farm Meats, Bagginswood

Opening Hours

Wed 8am to 5.30pm, Thurs 8am to 7pm, Fri 8am to 5.30pm, Sat 8am to 12.30pm

Straight from Our Farm to Table

We rear & sell all our own beef, pork, lamb & mutton through our shop on farm.
We also make our own flavoured sausages, burgers, home cured bacon, gammon etc. No order to large or small.

Hams ● All Poultry ● Honey ● Mawley Milk & Cream ● Ashley's Cakes & Bread ●
Jams ● Eggs ● Cheeses ● Apple Juice ● Potatoes ● Meat Pies ● Sticks & Logs

Telephone 01746 718732 with your order to arrange a date & time for collection

ROYAL BRITISH LEGION NEWS

Remembrance Events: This year's Remembrance Parade and Service will take place on Sunday 10th November. If you plan to march as part of the parade, please gather in the Talbot Car Park from 10.20am, to be ready to set-off at 10.45am. The parade will march to the Memorial Garden for the service that starts at 10.50am. There will be a briefing for the leaders, wreath bearers and standard bearers of those organisations marching as part of the parade, which will be held at [6.30pm on 7 November in St Mary's Church](#). The briefing is intended to explain what happens on the day and to ensure everyone is comfortable with what they are meant to do. On Monday 11th November, there will be a short service at the Memorial Garden at 10.45am, which finishes with the observing of the national 2 minutes silence.

Harvest Auction: We began the activities with our Annual Harvest Auction on Saturday 12th October, which was held in the Cleobury Mortimer Sports and Social Club. We would like to publicly thank all who so generously gave donations to the event, and everybody who supported the event and dug so generously into their pockets to make it such a success. We were able to auction some fabulous "lots", which ensured fiercely competitive bidding right across a packed room. The evening proved to be great fun and, as importantly, raised

nearly £1,500.00 for the Old Comrades Fund.

The money raised will support local ex-Servicemen and their families who need a helping hand. Finally, my thanks to David Taylor (Auctioneer for the evening) and other members of the RBL "team" for their help and support in the lead up to and running of the evening.

Paul Serrell-Cooke

CLEOBURY GARDENERS

Many will be aware of our annual watering-can rattling on the High Street asking for donations for the Cleobury Gardeners contribution to the Tree Pleaching Fund for the Historic Lime Trees, but this year we thought we might be warmer inside, as indeed we were. It was an appropriate day as Lewis Arborcare, who have the contract for this work, were already visible up the ladders carrying out the pleaching. This means the trees will be ready in good time for the installation of the Christmas Lights. A big thank you to those who donated, and also spent some time with us talking about the pleasure they derive from the presence of Lime Trees.

We are very pleased to announce the launch of our new website, and here you can find details of all our activities and information pages. For example, if you would like to remind yourself of exactly why and how we continue to have these historic trees, and in fact what pleaching means and how it is done, their full history and

the answers to all your questions can be found on our website: cleoburygardeners.co.uk.

Our meetings are on a Monday generally, and we are always pleased to welcome visitors, for a charge of £5 including light refreshments. Contact details are on the website. Enjoy the trees, the Christmas lights and our website.

Linda Ashman

FLICKS IN THE STICKS

**Parish Hall, November 16th
7.00 for 7.30**

'THE BANSHEES OF INISHERIN'

A simple but impactful plot delivered with the most beautiful and serene backdrop of the Irish countryside. This film is heartwarming and heartbreaking at the same time, and leaves you with a whole load of emotional baggage to ponder about. Two lifelong friends find themselves at an impasse when one abruptly ends their relationship, with alarming consequences for both of them.

IAN CASEY IN CABARET

6 December – 7.00 for 7.30pm

After a huge success earlier this year, Ian Casey returns for an evening of cabaret, with a Christmas theme. Tickets £15, including a two-course dinner, are available from Gabby Franklin on 01299 271713, or at www.cleoburyparishhall.uk/cabaret. Bar, including cocktails.

**FREE DANCE AND EXERCISE ADVICE
CLEOBURY MARKET HALL**

11.00am to 12.00 noon Saturday November 16th

**Tina Hobin is offering a free class on dancing and exercise.
With 50 years experience as a professional dancer and author,
she has the knowledge to help all ages.**

Men, women and children can benefit, ages from 3 to 83!

**Whatever your state of health, you can learn the way to a
happier, more relaxed life. It is also proven to be beneficial
and safe during pregnancy**

**No equipment needed, just come
wearing light footwear and comfortable clothing.**

**TINA'S TIP: "IF YOU CAN'T FIND TIME FOR EXERCISE,
YOU'LL HAVE TO FIND TIME FOR ILLNESS!"**

CLEETON ST MARY AND SILVINGTON VILLAGE HALL

AVAILABLE FOR PRIVATE HIRE

**PARTIES-CHRISTENINGS-FUNERAL CELEBRATIONS-
COMMUNITY EVENTS**

CAR PARKING-KITCHEN-OUTDOOR AREA

CALL US: 07908 791262

EMAIL:cleetonvillagehall@gmail.com

Facebook: cleetonvillagehall

I did it! After 15 months of planning and training I completed my challenge of climbing Kilimanjaro, and yes it was very hard. Like some of the others, I did need medical treatment for exhaustion on the summit (5,895m) after collapsing. Thankfully the doctors sorted me out to be able to do the seven hour trek down to our camp.

The story began with meeting my 15 colleagues at Heathrow for the first time. We flew to Addis Ababa then onto Kilimanjaro Airport, arriving in 30 degrees heat. After being transported to our Lodge for the night we had briefings by our head guide and the doctors (yes, believe it or not we had Doc Martin and he had heard all the jokes!) they were checking all of our kit which we then had to split into three bags; one left at the Lodge for party night on our return, one which the porters carried each day for us and our day rucksack for water, snacks and waterproofs. Lastly, we had our medical checks.

We left at 6.00am by coach to the main gate of Kilimanjaro National Park to complete the paperwork and security checks, (they were as tight as Heathrow) searching for plastic, drugs and fire arms, No one is allowed in the park without this and signed paperwork we could go no further. Pleased to say we were all clear. Then we were off on five hour trek through the rain forest onto to our first camp Machame (2,800m) which was all set up with tea and coffee waiting for us. This was to be the format for the rest of the week. We were given our tent which had our main bag in, we sorted this out and then off to the mess tent for our meal. The Doctor came to test our oxygen and heart rate, he also stayed to check that we were eating properly (one of the signs of altitude sickness is lack of appetite) this was done at EVERY meal time. After our meal we all turned in for the night. At 5.00am the following morning, breakfast and meds. Check. Day 2 was seven hours of very hard going to Shira camp (3,750m). Food, med checks and sleep again. Day 3, 5.00am, same routine, after med checks we set off for another long hard day which included some climbing and trekking over

sandy Moorland arriving at Barranco camp (4,000m) with a great view of the Wall. Once again we were treated to a very welcome meal, med check and off to bed again for a well deserved sleep. Day 4 another early morning when we started to climb Barranco Wall (Death Wall-Look it up) Oh my days, 5hrs of rock climbing phew, that was really hard. I made it but lost the skin of the ends of the fingers, ouch! Our new camp Karanga (4,800m) was in view but still took two hrs to get there, tea and coffee with popcorn waiting for us. Then our meal, med checks and off to bed. We had a lie in till 6.00am, same routine with breakfast and med checks. then off for 5hrs walking and climbing to Base Camp (4,950). We arrived for lunch & med checks then bed and rest as we were going to set off at 8.00pm to the summit. Head torches on, we set off arriving at 7.00am; that's when I needed medical help after collapsing with exhaustion. The doctors were brilliant, working on my legs and hips bearing in mind it was 19 below. When I came round I was lying down on the path having had my 5 pairs of trousers taken off by the doctors and they were working on each leg getting me mobile enough for the 7hrs hike down to the Millennium camp (3,730). When they were happy that I could continue I started down with my amazing guide Thomas (this trip was his 143rd trip up Killi) It was very hard going but we got quicker going down because we were getting more oxygen in our lungs. Thomas was the hero of the hour as he carried my rucksack down. The cup of tea on arrival at the camp was more than welcome, Once everyone else arrived it was business as usual, meal, med checks and very well earned sleep until 6.00am when we prepared for our final descent to the back gate of the park. More paperwork, more checks then back to the coach. Arrival at the lodge saw everyone heading to their rooms for a shower, we were ready for a little bit of luxury. Last but not least, the debrief, final med checks and a beer.

My Family and the Charities would like to thank everyone for their help and support. Pete.

SHROP SWEEP

CHIMNEY SWEEPING

- Rotary & Manual Chimney Sweeping
- Great Customer Service
- HD Camera Inspections
- Certificates Provided
- Smoke Testing
- Competitive Rates
- Trained by National Assoc of Chimney Sweeps
- Availability to fit all schedules
- Professional, Clean & Efficient

Contact Mark on: 07538 533865
Email: shropsweep@gmail.com

WESTONS

WILLS AND PROBATE

Come and see us at our riverside offices located in the heart of Bewdley at 18 Severn side South.

With over 30 years' experience, Mandy and her team offer a personal and professional service specialising in will drafting, lasting powers of attorney, deputyship applications and probate.

Previous clients feedback has included the following comments:

"I've used Mandy at Westons Wills and Probate numerous times over recent years covering all aspects of her expertise. Her guidance on the way forward and solutions to issues that she has suggested has been excellent. She is extremely communicative and responsive, and handles difficult situations with compassion and empathy. I have happily and confidently recommended her services to everyone I know that would benefit from her services."

"Mandy Weston of Westons Wills and Probate is a very professional and knowledgeable person. She has now become my 'go to' legal adviser and has taken on many legal tasks for me and my family. Wills, Probate, Inheritance Tax and Powers of Attorney. I trust her judgement and experience to act in mine and my family's best interest. I would highly recommend her legal services to anyone."

Tel: 01299 405873

"Great expertise and a friendly professional manner"

Contact Mandy Weston Phone 01299 405873 Mobile 07931 411733
Email enquiries@westonswillsandprobate.co.uk Website www.westonswillsandprobate.co.uk
Address 18 Severnside South, Bewdley, Worcestershire DY12 2DX

N.R. Evans Landscaping

- Grass cutting
- Strimming
- hedge cutting
- garden and site clearance

- Fencing, including:
- Panel fencing
- Post and rail fencing
- Picket fencing
- Stock fencing

domestic and commercial customers welcome

Call for a chat on 07535 902847

Email: nrevansgardenmaintenance@gmail.com Facebook: N.R.Evans Garden Maintenance



We are a family run company, with over 35 years of industry experience.

2024 is our 20th year in business.

We'd like to thank all our customers and the community for their support over the years.

T: 07971 096267 / 08450 564173

W: www.awe-services.co.uk

Two Staks, Eagle Lane, Cleobury Mortimer, Worcs. DY14 8RA



CONTACT US FOR ADVICE AND A FREE QUOTATION

ON ALL SOLAR PV AND EV CHARGER ENQUIRIES

ALL INDUSTRIAL, COMMERCIAL AND DOMESTIC WORK UNDERTAKEN

info@awe-services.co.uk



DODDINGTON LODGE SHORTLISTED FOR CARING UK AWARDS 2024



We are overjoyed to announce that Doddington Lodge has been shortlisted for the Caring UK Awards 2024 in the category of 'Quality in Housekeeping'. This incredible recognition is a true testament to our amazing team's passion, hard work, and dedication.

This nomination means so much to us because it reflects the incredible spirit and dedication of our team. Each member brings their heart and soul to their work, creating a home where our residents can truly thrive. We are so proud of what we've achieved together as a family and community.

"The awards ceremony will be held at the Athena on Thursday, December 5th, and we couldn't be prouder to represent our Doddington Lodge family." - Housekeeping Team.

Watch this space for more news as we prepare for the big night – fingers crossed!

Shavaughne and Lesly Take the Stage at the Care Show Birmingham: Championing Workforce & Wellbeing in the Care Sector!

Recently, our very own Shavaughne and Lesly proudly represented Doddington Lodge as guest panel speakers at the Care Show Birmingham! They had the fantastic opportunity to dive into key discussions around People, Workforce & Wellbeing, with a special focus on "People First: Recognising the Value of the International Workforce while Navigating Home Office Regulations and Audits."

We couldn't be prouder of Shavaughne and Lesly for contributing to these vital conversations that shape the future of the care sector. Their passion and expertise truly reflect our commitment to excellence at Doddington Lodge.

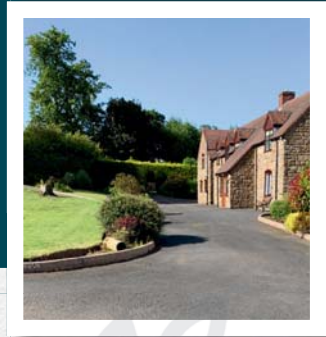
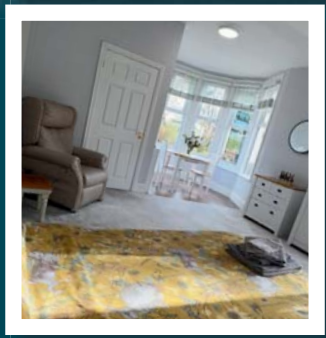
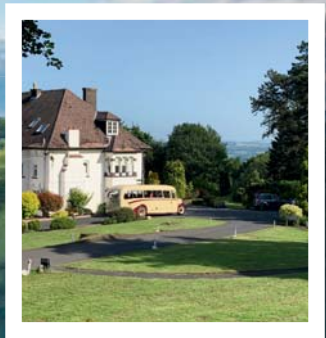


www.doddingtonlodge.com | E: enquiries@doddingtonlodge.com | T: 01584 707084

Doddington Lodge, Residential Care Home, Doddington, Nr Cleobury Mortimer, Shropshire DY14 0HJ.



Remember to follow us



living with us at Doddington Lodge

Care and Warmth at its Heart

We would like to welcome you and your family to Doddington Lodge, our newly renovated, privately owned residential and dementia care home in the historic, tranquil hamlet of Doddington, Nr Cleobury Mortimer. Located on the beautiful Worcestershire & Shropshire boarder, providing picturesque views from every aspect of our home.

With a modern bistro dining room and bar with a delicious daily menu created by our accomplished chef. Individually designed spacious double rooms, allowing couples to stay together or beautiful single rooms all with en-suites and stunning countryside views. Even a hairdressing salon for a little pampering to provide a place of well-being.

Doddington Lodge is a place where friendships are made and special moments are shared. We organise many fun activities that everyone can get involved with, whether that's a sing along, arts and crafts, collecting fresh veg from the allotment or just simply helping each other with a crossword in our daily newspaper. Each day is different, we certainly have many happy moments...

Our home is a loving community and family, where you can consider Doddington Lodge a home away from home. We will provide you with all the key information, guiding you through every step of the process, whether you are staying with us for a short or long stay.

Come along!
Coffee morning
on Friday 8th
November 2024



Join us for a warm cup of cheer and plenty of laughs at our monthly Doddington Lodge Coffee Mornings!

Every 2nd Friday of the month, come together with residents, family & friends over tea or coffee. Enjoy freshly baked cakes as well as the Doddington Lodge monthly raffle.

For only £2.50 per person – including your beverage and slice of cake – join us for our get-together on Friday, November 8th, 2024, from 10 am until midday.

We look forward to seeing you!

www.doddingtonlodge.com | E: enquiries@doddingtonlodge.com | T: 01584 707084
Doddington Lodge, Residential Care Home, Doddington, Nr Cleobury Mortimer, Shropshire DY14 0HJ.

   
Remember to follow us

CARTER'S ANTIQUES



We are looking to purchase all manner of antiques, jewellery, coins, medals and curiosities.

For a free valuations kindly telephone
John Carter: 07779 311792
Or email: johnbarney743@gmail.com

Alan Smith Aerials

Digital TV Installations.

Freeview aerials fitted and distributed around the house.

Freesat box, dish, and cable supplied and fitted. One off payment, **No contract or subscription required.**

Extra points, Repairs, New fits, Set ups, Multi room.

All work is carried out by a **Local**, fully qualified and insured installer.

01299 270007 or 07970 675728



Natalie Taylor Dip CFHP MPS Pract.

Specialist Foot Health Practitioner

Specialising in:-

- In-growing toenails
- Fungal infections
- Nail trimming
- Verrucae
- Calluses
- Corns

All from the comfort of your own home.

If you would like to make an appointment, please call on **07779 113982 or 01584 890112**



COUNTRY SKILLS

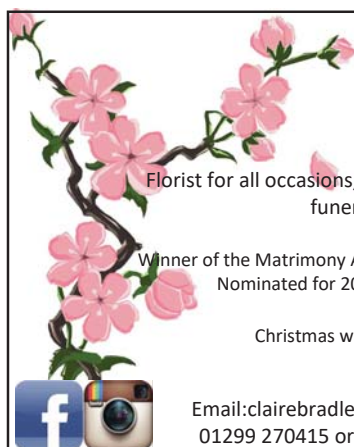
CPCS/NPTC Approved—fully insured

- Outside Renovation
- Tree Surgery, Hard Landscaping
- Slabbing and Fencing
- Decking, Roofing
- Contract Mowing

Call for a free quotation

R. Price & Sons

Mobile: 07967 140720 Email: roger@country-skills.co.uk



Claire Bradley
Floral Designs

Florist for all occasions, specialising in wedding and funeral flowers

Winner of the Matrimony Award 2020 Best Wedding Florist
Nominated for 2021 Matrimony Awards

Christmas workshops available



Email: clairebradley1@icloud.com
01299 270415 or 07980 580770



SINGING LESSONS

Professional singer and experienced teacher recently moved to this area

Vacancies available

All styles, ages, standards welcome

Contact Angela Kazimierczuk on

07870 506655



Domestic oil-fired boiler breakdown & maintenance services.

27 years' field-service experience with leading UK boiler manufacturer Worcester Bosch.

Donovan Taylor

Tel: 01299 828670 or 07807 837040

donovan.taylor@sky.com

www.greenstar-boiler-repairs.com

Caring about your environment and providing an honest, professional & reliable service you can trust



G W

Tree Stump Removal

Commercial and residential.

Fully insured, qualified and professional.

Your property left neat and tidy.

Happy to give quotes with no obligation.

Ring Sam: **07787095668 or 01299832549**

Email: sam@gwstumpremoval.co.uk

Can Do Better

I always hated getting school reports. They were like small, passive-aggressive dossiers drafted by teachers who clearly had something against my more casual approach to education.

One year, the school made the grave error of handing the reports directly to us pupils to take home. Mine, naturally, didn't make it. "The teachers didn't bother this term due to industrial action," I told my parents. It was the seventies, after all—everyone was on strike. And miraculously, they bought it.

Now, here I am, decades later, in a strange twist of fate, dishing out a report of my own. But this time, it's not about academic progress (or the lack thereof)—it's about my garden. Yes, it's a "summer term" review of the state of flora, fauna, and general horticultural ambition. And much like my old school reports, the results are... well, mixed.

FLORA & FAUNA – C+

The garden has had *some* successes, but overall, it seems to have been a tad distracted. As always, the Cosmos performed admirably. They're the star pupils—showing up every year, no questions asked, handing in their homework with minimal fuss. The sunflowers, too, held their heads high. But there were some unnecessary distractions. Take, for example, the utterly misguided decision to sow hundreds of rudbeckia. What was the garden thinking? It was a classic case of biting off more than it could chew.

Teacher's Comments: "Shows enthusiasm but lacks focus. You have potential, but you need to concentrate. Read the question before answering. Must do better."

PLANTING SCHEMES – D

This is where things really fell apart. The garden had grand aspirations, hoping to create a display worthy of being featured in

glossy gardening magazines. But ambition quickly gave way to reality. You can't sow endless seeds, create the perfect scheme *and* keep up with the weeding all at once. It's just not possible.

It has to be said that the relentless self-seeding Verbena didn't help your cause, spreading like a well-meaning but overly eager student who can't stop raising their hand. The weeds, of course, were quick to exploit this failure, surging ahead in the rankings.

Teacher's Comments: "You're a dreamer, Garden, but not necessarily in a good way. You must manage your time better, and while I understand the weather was challenging, there is no excuse. Other gardens have managed, so why can't you?"

CREATIVITY – B+

Credit where credit's due. The garden *did* try to think outside the box. The firepit was a promising idea—creating a space for the family to gather, roast marshmallows, and engage in deep conversation under the stars. Unfortunately, relocating the firepit to a less convenient spot meant it saw little use. In fact, it was only visited by you and your overly enthusiastic friends after a few beers - neither big nor clever.

And let's not forget the pond plants, valiantly trying to survive the regular onslaught of an overenthusiastic puppy.

Teacher's Comments: "Good effort and attempt at innovative thinking. Next year, it would benefit from better planning and puppy-proofing. Keep up the creative spirit."

IN SUMMARY

Let's face it - this was not the garden's finest term, but there are signs of progress. The basic framework is there, but it needs better execution. Still, I'm a glass-half-full sort of chap, so let's summarise this as a garden with room for improvement, OK?

Let's see how next summer performs.

Simon Morton



TWS Kidderminster, are a premium home improvement company, offering bespoke windows, doors, and roof systems with a high-quality finish at competitive prices.

With over three decades in the industry we pride ourselves on offering extensive knowledge and a service you can rely on.

As comprehensive home improvement specialists, we take pride in installing a wide range of double-glazed products. TWS work with industry leaders and our employed fitters are CERTASS registered.

Investing in our products will not only visually enhance your property but also offer the industry's best in thermal performance technology and high security. All of our products are made to measure and can be customised in an array of colours and finishes to suit your home.

Walk in anytime! The showroom is open 6 days a week including 9am to 4pm on Saturdays, you can even bring your dog as our showroom is dog friendly too with fresh water, toys and treats to hand!

www.twswindowsanddoors.co.uk sales@twshq.com 01562 822855 Unit 5, Lupin Works, Worcester Rd, Kidderminster DY10 1JR



CM BESPOKE CARE LTD.

**Ground Floor Office Suite,
Upper Baveney Park,
Cleobury Mortimer,
Kidderminster,
DY14 8LF**



**CM AURICULAR HEALTHCARE
SERVICES FREE
FOR ALL CLIENTS!**
Ear Health Checks
Wax Removal
Hearing Screenings
+ Much More

WE CARE
Providing The Following Range of Services:

Care In Your Own Home
Nursing Led Care
Palliative Care
Personal Care
Adult Social Care
Mental Health Specialism
Learning Disability Care
Young Adult Care
Social Calls
TDDI
+ Many More

**PROVIDING CARE
& SUPPORT**



Tel: 01746 718816

Email: cmbespokecare@outlook.com



/CMBespokecare



/cmbespokecare



REVIVE BATHROOMS

COMPLETE BATHROOM INSTALLATION SERVICE

07971 361901 or 01299 832484



Complete Bathroom Installations
Bathroom Refurbishment or Repairs
Wet Rooms
Professional Wall and Floor Tiling

For a quality and guaranteed service, call Stuart for a free quote
 Highly Recommended / References available - see my reviews on www.freeindex.co.uk

FOR THE BATHROOM YOU DESERVE!



Elite Sweeps

Professional Chimney Sweep

& HETAS Stove Installer

- ✓ Prompt, reliable & friendly service.
- ✓ Cows and Chimney Pots fitted.
- ✓ Fully qualified and fully insured.
- ✓ Guild certificates issued after every sweep.
- ✓ HETAS Approved Installer.



Call Eddie

Tel. 01299 382222 / 07895 612915




www.elitesweeps.co.uk

Hollywaste Holiday Lets


Our 2 bedroom (ensuite) cottage, sleeps up to 6 adults, situated in Hollywaste, Cleobury Mortimer. Fully equipped kitchen, open plan living room with log burner, dining area and downstairs WC. Includes Freesat and fast WiFi. There are enclosed & open decking areas outside, to take advantage of the beautiful countryside views, and a grassed area for outdoor games.

Open all year round and welcomes adults, children, 1 large dog or up to 2 small dogs


Discount of 10% available for locals simply quote "keepitlocal" at the checkout

Events we can accommodate:
 Staycations, Pamper weekends, Shooting weekends, Wedding venue, Minimoons stays, Stargazing weekends,
 Cookery weekends & events, Camping and caravan pitches are also available!
 If you're interested in hiring our space or land for any event and time frame.

Tel: 07962 151322 Email: hollywasteholidaylets@gmail.com FB: <https://www.facebook.com/HollywasteHolidayCottage>
 Website: <https://hollywasteholidaylets.squarespace.com> for more information



Glenys Turpin Reflexology



Reflexology is a non-invasive form of complementary medicine. It involves a method of treatment in which pressure is applied to the feet or hands to treat a wide range of ailments and is effective in promoting deep relaxation and well-being.

Reflexology does not claim to cure, diagnose or prescribe. It may be used alongside orthodox medicine and may be helpful with stress related symptoms and other conditions.

For more help and information contact Glenys...

5 New Road, Cleobury Mortimer. glenturp@hotmail.co.uk 07763 332759

Diploma of The Bayly School of Reflexology, Member of The British Reflexology Association

MOBILE FOOT HEALTH CARE

Providing a thorough nail and foot care treatment in the comfort of your own home.

Registered and insured practitioner.

STACEY WILLIAMS FHP Dip RFHP

07794 022 618



CURRENTLY FOR SALE

Listed with Blacks Brokers Ref: 8805

We have a great range of stock! Competitive prices AND We are open 6 days
Pop inside before you pop online!

18 High Street, Cleobury Mortimer

Tel: 01299 489590

Like our Facebook page CLEOBURRS

BODEN & SON Milk est. 2013

Not only do we deliver fresh Mawley Milk from the farm to your doorstep,
we also deliver: cream , eggs, butter, fruit juice & now.....



Ashley's fresh bread

Telephone: 01584 891550

EMAIL boden6400@gmail.com



Hobbs Building Services

EST 25Years.

A Total Plastering, Maintenance and Building Service for your home,
business and outbuildings.

Insurance work undertaken

Emergency call out service for general plumbing, roofing, boarding up damaged doors and
windows. For a free quote please call;

Ian on; 07967190742

Email: hobbsbuildingservice@yahoo.co.uk Or Call/Text Kelly on; 07790085307

Rachel Siddall

DipCFHP, MPSPract

Footcare in the privacy of your own
home:

Nail trimming
Ingrowing toenails
Corn removal
Thickening nails
Callus reduction
Verruca treatment
Diabetic foot care



07478 007913

Cleobury Opticians

NHS & private eye tests ♦ FREE children's glasses

FREE NHS glasses ♦ Home visits



Opening Times-	
Tuesday	9am-1pm 2pm-5pm
Wednesday	9am-1pm 2pm-5pm
Thursday	9am-1pm 2pm-5pm
Friday	10am-2pm
Saturday	9am-1pm

www.cleburyopticians.co.uk

16 Church Street, Cleobury Mortimer, Kidderminster
DY14 8BX

Tel: **01299 270012**

Email: cleburyopticians@outlook.com



All Aspects of carpentry work undertaken

Level 3 City & Guilds in Carpentry & Joinery, 20 years of experience

Tel: **07854 032750**

Email: duncpearce1@gmail.com

Stewart Mumford Architectural Services Bespoke Architecture

Great value personal service backed up with extensive local knowledge, established links with other construction professionals to ensure comprehensive packages specifically tailored to individual needs.

Initial consultation free of charge.

Specialist in Works to Listed Buildings, Affordable Houses, Open Market Houses, House Extension and Alteration, Barn Conversion and Commercial Projects.



T: 01299 271068

M: 07977 921039

E: office@stewartmumford.co.uk



A M Plumbing & Heating

- *General plumbing
- *Oftec approved
- *Bathrooms
- *Oil boilers
- *Hot water cylinders
- *Servicing
- *Central heating
- *Power flushing

Call Today: 07565 181554



TOTAL PROPERTY MAINTENANCE

Fireplaces built for multi-fuel burning stoves,
Plastering, Building & General Maintenance

Rob Taylor

Mobile: 07944 074540

Landline: 01299 832734

Email: rptbuilding@hotmail.co.uk

Quality firewood for sale

We source our wood from a reputable and sustainable source.

Can deliver up to 20 mile radius from Bayton (DY14 9NA).

We can do multiple and large loads.

Please call to enquire on pricing.

John Edwards 07531025018



H.C.P.C Number CH22527

Cleobury Chiropody Janet Manley

Qualified Chiropodist
MSSCh. MBChA
BSYA (reflex) REIKI Master

Tele:- 01299-272841

Mob:- 07805-268439

Email: janetpmanley@yahoo.co.uk

2, Tenbury Road,
Cleobury Mortimer,
Kidderminster,
Worcs.
DY14 8RB

A Round Of Appaws

Professional Dog Groomer
C&G Levels 2 & 3 Diploma

Fully Insured

Call or text Jules on
07368359144

aroundofappaws1@gmail.com



facebook
Instagram

A. Farr Painting & Decorating

Give your home a beautiful new look....

Contact:

andyfarr12345@gmail.com 07815 855340

Lisa Steward Ironing services

Hopton Wafers



Please call: 07581065436 for more information

'Greenbingate' rumbles on. Apparently Shropshire Council underestimated demand as after weeks spent cajoling and threatening us in order to make us sign up, they are surprised that we have. This has caused delays in issuing the stickers and we were told that bins would be emptied as normal until all orders had been fulfilled. But... after all the effort expended in telling us how difficult the stickers would be to remove, we don't need to bother with this aspect as apparently they are falling off by themselves and replacements are now being sourced from a different manufacturer. As a result, the whole exercise has been put back a month and will now commence from 4th November which is roughly when you should be reading this. The good news: subscriptions will now run from November to October so we haven't lost a month of paid collections. The bad news: They will have had our money for an extra month so I hope they have invested it wisely, especially given that they have the largest projected deficit per head of population (£191) and their estimated deficit for 2025 in relation to their reserves will virtually wipe the latter out (£37 million vs £38 million...).

More on the arrival of our Post Office (or not). Apparently Stuart Anderson, our new MP, has made enquiries about the state of play on this and has been told by the Post Office that someone is 'in training to take over'. As this is the same response that has been trotted out for some months, I see two possibilities here. Either a: this is a very long course or b: the PO is telling porkies. You choose (although I know that your decision will not be influenced by the integrity and honesty so evident in the recent activities of said organisation)....

Like buses, you wait forever and then two come at once. We now have two planning applications for nursing homes/institutions on the table. The first is yet another revamp of the previously built (and then immediately demolished) building opposite the old Mullers site. You may recall that last year, an application was submitted for an enlarged

building on the site which was rejected. The latest amendment reverts back largely to the original approved specification so may have an easier passage through the system. The planning reference no is 23/03056/FUL should you be interested.

The second application concerns the old medical centre in Pinkham and seems to be for a care home/institution. It's difficult to tell which as the definition is a wide one. The application leaves the outside of the building largely unchanged apart from rendering to the exterior walls of the first floor. Interestingly, the internal arrangement consists largely of en suite rooms with limited common/dining provision on the ground floor. The outside will be given up to car parking so no sign of outside recreation space. It will be good to see the building back in use although the question remains 'what as?'. The planning application reference for this is: 24/03761/FUL.

Both are due to be discussed at the next Town Council meeting on 4th November.

Much discussion on social media forums about the right to free speech vs the freedom to offend. As with many aspects of such discussions, things can get heated but Voltaire hit the nail on the head when he said 'those who can make you believe absurdities can make you commit atrocities' so the freedom to offend should be handled with care. Donald Trump (and others) please note.

Bad news for partners in the UK division of accountants/consultants, Deloittes. They will have to take a 5% pay cut and will have to struggle by on only around £1 million each. No doubt should the begging bowl be passed round, you will all donate generously by dipping into your winter fuel allowance. Oh....

Ariadne J Grumpy



Fully qualified electrician and bathroom fitter with over 30 years experience

- Electrical Installations & Repairs
- Bathroom & Kitchen Installations

Call Steve on: 07791 492 951
enquiries@selectrical.co.uk



Little Detton

Home Grown Meats

Cleobury Mortimer
DY14 8LW
07825030607
www.littledetton.co.uk

Free delivery for orders over £30 within 10 miles

Rare Breed Beef, Lamb, & Pork, Sausages, Bacon & Gammon, Free Range Chicken

See us at the Farmers Market

HIS & HERS

Dog Grooming Parlour

All breeds and
Cross breeds professionally
Trimmed and Groomed



J. A. Guest
Tel: 07790 796 027

Washing Machine
Repairs and Sales
JULIAN BREAKWELL
Telephone 07791 633 746
Repairs to all makes, including Bosch,
Hoover, Zanussi and
Hotpoint
NO CALL OUT CHARGE


Ever After



- Breakfast club
- After school club
- Holiday club
- "Forest schools" outings
- 15hrs education funding
- 24U funding
- Age ranges: 3 months to 11 years

Day Nursery
Cleobury Mortimer
Please contact us on 01299 272 777
Or Call in to see us anytime.
Friendly, Caring Environment for the Community

David Ward firewood



Do you need a dependable consistent quality supply of seasoned or kiln dried hardwood and softwood firewood?

Cut and split to suit and delivered in breathable 1.2-cubic metre bags, so no need to restack.

Small delivery vehicle, fitted with crane, can deliver to most locations and situations.

CALL DAVID TO DISCUSS YOUR REQUIREMENTS:
Mobile: 07866 441154

Piano tutor

Francis Engleheart

All ages — I specialise in teaching adults without previous experience

I come to you

07710 288526 • fengleheart@hotmail.com

S. L. CARTER

PROFESSIONAL PAINTER AND DECORATOR

PLASTERING, TILING, COVING AND GLAZING

CLEOBURY MORTIMER

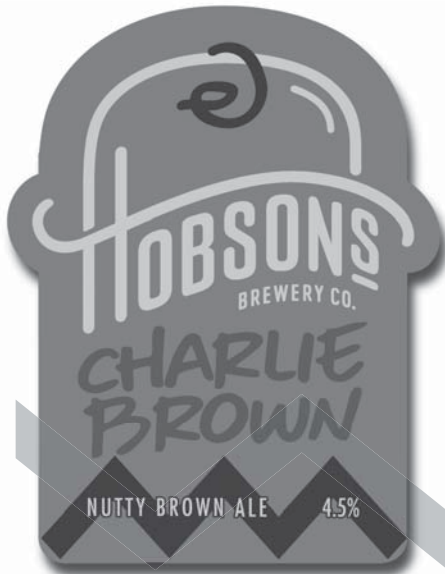
TEL: 01299 272868
MOBILE: 07815 483 029



HOBSONS BEER OF THE MONTH

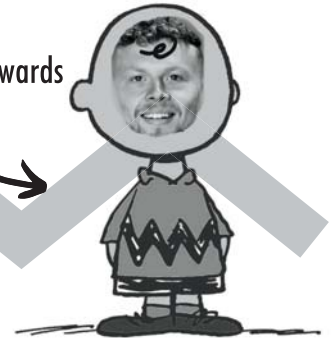


Charlie Brown is named after Brewer Charlie Edwards, the creator of this month's cask special! A rich nutty brown ale with earthy undertones and notes of caramel and toffee. An all-British line up of hops in Northdown, Target and East Kent Goldings make for a complex, smooth and beautifully balanced beer.



Keep an eye on Hobsons socials for a list of all pubs stocking Charlie Brown this month, including Cleobury pubs on our doorstep!

Brewed by Charlie Edwards



☎ 01299 270837 ✉ beer@hobsons-brewery.co.uk 📱 @Hobsonsbeers 📺 @hobsonsbrewery



W. BROWN
PLUMBING & HEATING



OIL BOILER ENGINEER

- Boiler servicing & repairs
- Worcester Bosch installer
- General plumbing work

07974121297 billejbrown75@gmail.com @wbrownplumbingheating

Booton Brothers



Construction

Rich: 07445298747

Mike: 07853225401

bootonbrothers@outlook.com

All building work undertaken

Cleobury Mortimer Golf Club

At Cleobury Mortimer Golf Club we believe that a really enjoyable golf day takes more than just a great golf course. We make sure that your whole experience, from the friendly welcome in the golf shop to your drinks and meal in our relaxed clubhouse, is all part of a day you'll remember.



Everyone Welcome

Membership available.

Just some of the many benefits of joining Cleobury Mortimer Golf Club

- Access to full length 27- hole golf course
- Opportunity to achieve and maintain a handicap
- Family, Friendly Environment
- Playing opportunities at all times of the week
- A range of competitive opportunities
- Open dawn to dusk 363 days a year.

We look forward to meeting you at Shropshire's friendliest golf club.



01299 271 112 (ext 1)

pro@cleoburygolfclub.com

www.cleoburygolfclub.com

THE PRIMARY SCHOOL

I've lived In Cleobury since the autumn of 1978, when our family moved here from Bolton. Our two sons went through the primary school, on to Lacon Childe and then university. Since those distant days three granddaughters have been following the same route and my great grandson will probably do the same, I'm telling you this because I have a great respect for the primary school and the seeds of a good education they planted in my sons' thinking.

It was an interesting experience to visit the school recently and talk to head teacher Sarah Desborough and Chair of Governors James Payton. They are conducting a public consultation to present to the county authorities to get permission to fence off part of the playing field next to the school so that it can be used safely and securely during school hours. The fence will be flexible and the area available to the public outside school hours. The field is there for the community to use; what the school wants is safe use for its pupils; your children today, my children before them.

The success of the school; with its Ofsted rating of "Good Provider", winner of a Gold award in the 2023-24 School Games, a Safer School, a rating as a Music Mark School, marks it out as a place our whole community should be proud of. And just as the town grows and will grow more in the coming years, the school will also grow

too and the need for space with it.

What the school is looking for in its public consultation is ideas from parents of today's pupils of what they want to see develop in the future. It is a community school, our community, and we can all have a say in its future.

Certainly fencing off the area used by the children will prevent stray dogs fouling the area, with the risk of serious damage to health if a child should fall in that area. Adults are also at risk, and a friend who has worked in a hospital and seen the awful effects upon a young child affected by dog fouling. As a decent community, surely nobody can argue with keeping children safe.

The Public Consultation runs from October 18th to November 29th, with public meetings as listed:

November 11th. 6.00 to 7.30pm at Cleobury Community Hub.

November 15th. 4.00 to 5.30pm at the Community Hub.

November 16th. 9.30 to 12.30pm at Cleobury Farmers Market.

November 18th. 6.00 to 7.30pm at the Community Hub.

Let's be proud of our children and the school that cares for them and provides an education that will guide their future.

Jim Reynolds

WE WENT TO MARKET

It seems you can almost always find a new face or product at the Farmers' Market. It's not a place you go looking for the very lowest price, that's for the Aldi enthusiasts amongst us. That's not a criticism of that very popular company, but I like to

find the special treats that local markets can provide. Just a little something to make you feel good.

In October I stopped to look at the Jerry's stall, where the offer was a range of ice creams in small pots. 100 ml is enough to give you a good idea of just what the taste is like and I chose a Ginger Crush and a Damson and Sloe Gin for my lady and I to take over lunch. We agreed they were very interesting and at £2.00 a pot an affordable treat.

We both enjoy muesli at breakfast and Hammonds of Shropshire obviously tempted us. It impressed that there's just what you want and no dust like Tina removes by shaking other brands' product through a sieve. She tells me it's dried milk and it goes in the bin.

No such treatment necessary with the Hammonds product, it's all the real thing you eat. It's my choice in future, not a cheap product, but a really good one..

And on the way out we picked up a couple of bottles of apple juice. A lovely drink in the cool of October, it will be even better in the summer of 2025.

That's the market, a friendly place where people smile and chat and take home something rather special to eat. In a brief chat with a friend he told me he'd read that in a review of Shropshire and its attractions, Cleobury Mortimer is the most popular choice of places to move to.

Good Lord, we've been discovered!

Jim Reynolds



CONSERVATORY
INSULATION SOLUTIONS

Worcestershire based

Special offer:
Save 25%
+ 0% VAT

Is your conservatory too hot in the summer ?

Is your conservatory too cold in the winter ?

- Warmer in the winter
- Cooler in the summer
- Normally fitted in just 1 day
- FREE in home quote
- Year round use of your conservatory
- VAT FREE GOVERNMENT APPROVED INSULATION

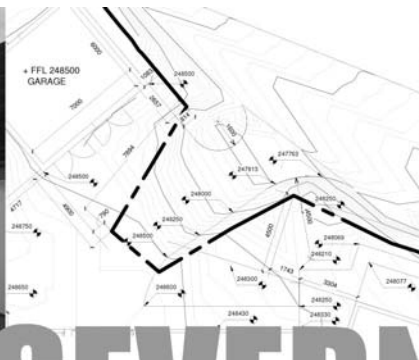


EXTRA 10% discount for

NHS / Current & Retired | Blue Light Card Holders | Saga Members

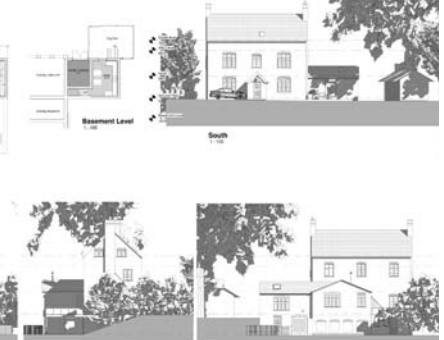
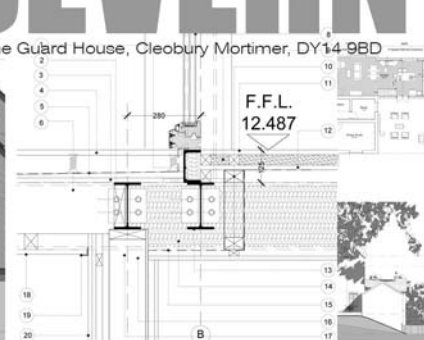
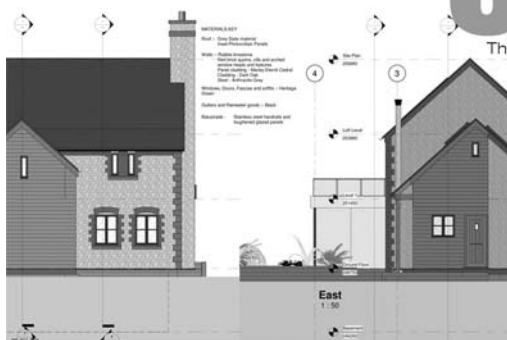
Freephone: 0345 5480078

www.conservatoryinsolutionsolutions.com



SEVERN
architects

The Guard House, Cleobury Mortimer, DY14 9BD



We are a friendly Shropshire based architectural practice with plenty of experience in all kinds of residential projects large and small. Using the latest 3D software package and technology we can turn your virtual dream home into a reality.

Contact us now on 07825 759484 or email
julie@severnarchitects.co.uk
for your consultation

Our Architectural Design Services include

- Design & Feasibility Studies
- General project Advice
- 3D Modelling
- 2D CAD Drawing
- Planning Advice and Submissions
- Building Regulation Applications
- Tender & Construction Drawings
- Contract & Project Management

RIBA

Chartered Practice

GKY DANCERS STAR AT LUDLOW

Grace Young's GKY Dance is a local force for youth and dance talent. In seven years this young woman has grown her dance classes to cover the Cleobury and Ludlow area plus south Staffordshire. Tutoring young ladies from 7 up to 17 years of age, she has a register of 250 pupils.

And at the coming Ludlow Winter Festival running from November 22nd to the 24th, her pupils will be starring on the 23rd. The group will be drawn from the Cleobury area and from Ludlow and Clee Hills.



Their contribution will be to dance in support of the opening with three different routines. A big ask of young talent, but they've all been training and rehearsing hard with Grace and her staff. Grace has seen shy young ladies join her classes and develop confidence as they dance with the established members. Dancing as part of a big event like the Winter Festival will confirm their progress and self confidence. If you are in Ludlow on the 23rd, get along to the opening ceremony and applaud young people working hard to make the event a success.

JANET MOSS

She was a remarkable lady, so quiet, polite and renowned for walking down from her house in Saint Mary's Close to shop on the High Street. She was doing that into her 90s, sometimes on her own, sometimes with a neighbour or friend, but very much an independent person until very late in a life that ended at 101 years.

At her memorial service in the parish church where she was so well known and loved, the British Legion was one body to mourn her passing, their oldest member. Others spoke of the way she inspired people who met her with quiet grace, plus an ability to establish a friendly relationship with them. "I'm so old that people can talk to me about early days," she'd explain.

It is appropriate that fellow Legion member David Walford should write a poem in her honour:

**The day before her 98th
birthday
1st May 2021.**

**Janet Moss caused a bit of
chaos**

**By completing her final 100th
lap**

**Sponsorship for the Royal
British legion old comrades,
Around St. Marys place
Cleobury Mortimer**

... Via the memorial garden.

**Supported by her walking
frame**

**With a union jack stuck in
the side**

**And her birthday balloon
tethered to it**

... happily bouncing along,

**Accompanied by her friend
Pauline**

**Whose birthday happened
to be on the same day.**

**Applauded by Royal British
Legion Members**

**She finished by cutting her
birthday cake.**

**Now alas her time has come
to say Adieu**

**Having reached the ripe old
age of 101.**

**We will miss you, Janet
Moss.**

**Your gentle smile,
That mop of curly grey hair
And can only wonder with
awe**

At your life's past memories.

**Lest we forget,
...We will remember her.**

That heart of gold.

That gentle soul,

Who now abides in heaven

Free from mortal flesh,

Surrounded by angels

In the great cosmos.

CHRISTMAS CRAFTING

Hopton Wafers Village Hall has a special event on Saturday the 30th, starting at 2.00. It's all about making Christmas gifts, from cards to tree decorations, willow wreaths, table centres, baubles and much more. Great for families to work together.

Admission is £5.00 for adults and £3.00 for children, with a special rate for families. A nice generous touch is the provision of tea, coffee and squash free.

And of course there's a cake stall and a raffle.

DO YOU ENJOY DRIVING?



Join the team and experience the satisfaction of knowing you have helped make a difference to someone's life.

Volunteer with our friendly community transport service.

Drive your own vehicle, for which there is a mileage reimbursement.

Times to suit you!

Discuss joining our team by telephoning **01584 233131**

or email admin@temewheels.org.uk

Website: temewheels.org.uk

We are open from 9.00am - 1.00pm Monday to Friday

We look forward to hearing from you!



Registered Charity No. 1193641

KIDDERMINSTER SELF STORAGE AND REMOVALS

STORAGE

Free insurance . Flexible Terms
Fixed Price Guarantee . No hidden costs

REMOVALS

Professional Removal Service
Est. over 25 years

PACKAGING MATERIALS

Boxes, Bubblewrap, Tape Etc. for sale
Free local deliveries on orders over £20

01562 744088

www.kidderminsterselfstorage.co.uk

Unit 11 Finepoint Way, Stourport Road, Kidderminster DY11 7FB
info@kidderminsterselfstorage.co.uk





EVERYTHING INTERIOR UPHOLSTERY

REUPHOLSTERY SERVICES:

- AUTOMOTIVE
- CARAVANS
- CAMPER VANS
- TRADITIONAL & MODERN
- COMMERCIAL & BESPOKE
- DOMESTIC
- CARPET & UPHOLSTERY CLEANING
(in partnership with WE GLEAM)

OVER 30 YEARS EXPERIENCE



CONTACT US TODAY

Unit 19 Old Station Business Park, Cleobury Mortimer, DY14 8SY
 07961 712683 / 07961 792103
www.everythinginterior.co.uk
 email: everythinginterior@outlook.com

Bespoke framing and mounting for:

- Artwork
- Photographs
- Canvases



The Framing Studio Cleobury Mortimer

Paul Serrell-Cooke
07791 378240

Bringing artwork and images to life



**LUDLOW
SALVAGE**

~ Est 2017 ~

Reclaimed Building Materials
and Architectural Antiques

Station yard, Station road,
Woofferton, Ludlow SY8 4AW



07805 312168



ludlowsalvage@gmail.com




/ludlowsalvage



/ludlowsalvage

WWW.LUDLOWSALVAGE.CO.UK


**LUDLOW
FIREWOOD**

~ Est 2019 ~

Suppliers of Premium Grade Ready
to Burn Firewood, Beautifully Crated
and Delivered to Your Door



07949 318014



ludlowfirewood@gmail.com



/ludlowfirewood



/ludlowfirewood

Station yard, Station road, Woofferton, Ludlow SY8 4AW

WWW.LUDLOWFIREWOOD.COM

Available in Barrow bags and
nets for all your access
requirements.

If you are reading this and you were born in this century you would probably be referred to as a Millennial. If you were born in the last century, let's say from 1950 onwards, you will remember how you filled your childhood days, with dolls and toy soldiers, making imaginary games either on your own or with friends.

As you grew up you socialised in the street, maybe the local café or pub or even a restaurant on special occasions. Our very modern age of technology came into being towards the end of the last century and has literally exploded in its development of almost every aspect of our lives.

One of the most significant developments is the way we communicate and our new 'must have' accessory is Social Media. Loosely defined as methods of communicating between ourselves other than using our voices in face to face environments.

While the more mature of us are possibly wary of this, the Millennials' have embraced this culture and will continue to find ways that enhance the capability, dare I say it, until we stop using some of the capabilities that our bodies were originally intended to use.

But coupled with this the evil elements of our society not just in the country, but worldwide are also seeking to find and develop ways of feathering their own nests at our expense. Be in no doubt that this crime collectively known as fraud is now more widely known as SCAMMING.

Nearly every week and sometimes even more frequently than that, the authorities advise us that a certain scam or other has popped up, sometimes as new method or more likely a variation on one of the several themes that exist today.

To be successful the scammer must be able to gather some information about their target and personal information most often comes from sources that should be protecting the data much more robustly than they are.

Large companies, small; companies, Banks and Finance institutions are all guilty of lack of total protection of their customer data and the

information is traded on the black market by the evil perpetrators of scams.

I have been made aware recently of the revival of scam techniques that fall into the category of Romance Scams, Charity scams, Imposter scams, Grandparent scams, email fraud, Money transfer scams and Sale of non-existent goods scams.

These are a few of the main ones, but variations exist in nearly all cases. Some you the reader may not have heard of, but building awareness and challenging the unexpected goes a long way to protecting yourself from being a victim.

It is encouraging to know that specialised departments are being set up to address these crimes and organisations such as Neighbourhood Alert, Which Magazine, Action Fraud and the higher level National Cyber Security Centre are getting on board with detection and prevention systems to help us stay safe.

Our finance institutions such as the major Banks have been slower to react, claiming in the past when a victim gives out personal banking details believing the scammer is genuine, then the victim is at fault.

It is encouraging that a recent agreement amongst the Banks is that refunding lost money through scams will be easier, but with a caveat that the victim 'should have followed advice from his/her bank'.

Banks have also signed up to the 159 system that I wrote about last month, and anyone who has any doubt about a transaction on their account can use either system to immediately be put in touch with the Fraud department of their Bank. If you are a Millennial, go online and research all the various material you can on preventing being a victim. Otherwise if you are not technically minded, ask a family member to help you. If in doubt, don't just agree to something, always check what you are being asked to do.

Nigel Reid

CLEOBURY SEAFOOD & FREEZER CENTRE

6, Newhouse Farm, Tenbury Road, Cleobury Mortimer DY14 8RD

For enquiries or to place an order, phone Ann 07711875553

Top most popular products

Fish Cod, Haddock, Kippers, Sea bass, Red Snapper, Tuna, Swordfish, Salmon & more

Seafood Calamari, Whitebait, Scallops, Raw King Prawns, Fish pie mix

Bennet Ice Cream

Curries and Mr Daves Curries

Dairy Cream Cakes Éclair Finger Donut, Scones, Apple Turnovers

Frozen Fruit

Blueberries, Blackberries, Blackcurrants, Summer Fruits, Raspberries & more

Hot Puddings Treacle, Sticky Toffee, Chocolate, Jam

Suet Puddings, Steak and Kidney and Steak and Ale



Gluten Free, Vegan, Dairy Free, Vegetarian

I have a new Website under construction, and will be ready very soon

Opening Times Closed Monday, Tuesday to Friday 9.30 to 4.30 Saturday 9.30 to 12.30

ONE STOP ROOFING

The Flat Roof Specialists



- Rubber, Fibreglass & Felt
- Re-pointing & Chimney Repairs
- Fascias & Guttering



Take advantage of our offer: Replace your flat roof Making EPDM (rubber) your choice for a long lasting, weatherproof & high slip resistant membrane, with a lifespan of 50 years, **get it for the same price as felt**, which only carries a 10 year guarantee!

Replace your flat roof with EPDM (rubber) & add a skylight or lantern, giving extra light to your room starting **from as little as £400!!**

Freephone 0800 0855277 * 07538 471274

Www.onestop-roofing.co.uk

onestoproofinguk@gmail.com

Family business est. 35 years.
All repair work undertaken

Proud members of
Checkatrade.com
Where reputation matters



Our Services



SOLAR PV



EV CHARGERS



**AIR SOURCE
HEAT PUMPS**



**GROUND SOURCE
HEAT PUMPS**



BATTERIES



VENTILATION



**UNDERFLOOR
HEATING**



RADIATORS

About us

EnergyZone is one of the largest renewable energy companies in the Midlands, having provided domestic and commercial sustainable energy solutions for over 20 years.

Based next to Hobsons Brewery in Cleobury Mortimer, we are your local experts in renewable and low carbon energy.

The current energy crisis has been incredibly eye-opening as we come to realise how reliant we are on other countries for fuel. Wouldn't it be nice to become more independent and less reliant on the volatile energy prices... well, that's where we can help!

What can EnergyZone Offer?

- With over 130 years combined experience, we are keen to help with all your energy enquiries and deliver impartial advice.
- Totally free desktop quotes for Solar PV and Heat Pump systems completely unique to your property to show you exactly how much you could save.
- Self-consumption gadgets to help you utilise all of your generated energy. Whether its a Smart Electric Car Charger, Immersion Diverters or Battery Storage Units, we can help you become more independent from the grid.
- Ensure your heating is as efficient as possible, through underfloor heating installation, radiator upgrades and smart hot water cylinders.
- Advice on all Government Grants and Incentives.
- Local support with annual servicing through our in-house EZCare package.

Get in touch today to start renewing your energy!

For your peace of mind, EnergyZone has the following accreditations:



01299 270011



sales@energyzone.co.uk



COPPICE GATE

Over 50's 12 Month Holiday Park

'Spend your Golden Years in the Serenity of the Wyre Forest'

- Luxury Lodges & Chalets
- Spacious Plots
- Quaint Fishing Pool
- Nestled in Peaceful Woodland



01299 401 277

bankfarm.cp@gmail.com

www.coppicegate.co.uk



BANK FARM EQUESTRIAN CENTRE

Established Equestrian Centre in the
heart of the Severn Valley & at the
door to the Wyre Forest



- Forest Hacks -
- Jumping & Flatwork Clinics -
- Cross Country Lessons -
- Heavy Horse Hacks -
- Trail Hunt Hire -
- Horse Sales -

07852 156428

bfrt@hotmail.co.uk

www.bankfarmequestrian.co.uk

The Cleobury Clarion Social Calendar for November

Mon. 4th 7.00 The Town Council meet in the Cleobuey Country Centre.	PAGE 58
Tue. 5th. 2.00. Carer Support Group meets at St Mary's Place, Love Lane.	
Wed. 6th GENERAL WASTE BINS EMPTIED.	
12.00 W>I< Winter Warmer Soup Lunch, Market Hall.	PAGE 11
6.00 Late night opening at the Food Bank in the Market Hall.	
7.30 Whist Drive at Doddington Village Hall	
Thu. 7th. 10.00 Rock Pathfinders walk out from Blackstone car park in Bewdley.	PAGE 13
Fri. 8th 10.00. Coffee Morning at Doddington Lodge.	PAGE 33
Sat. 9th 12.00 noon. Christmas Fairy at Kinlet Village Hall in air of Air Ambulance.	PAGE 7
Sun. 10th 11.00 Remembrance Parade will be at the War Memorial.	PAGE 27
Mon. 11th 10.45 Memorial service at the War Memorial followed by national silence.	PAGE 27
Tue. 12th 7.30am The Breakfast Club meet at the Golf Club.	PAGE 9
7.30pm Cleobury W.I. meet at the Market Hall.	PAGE 11
Wed. 13th GARDEN AND FOOD WASTE BINS EMPTIED	
10.00 Walking for Health steps out from the Market Hall.	
10.00 CoCo coffee morning at the Market Hall.	
12.30. Soup Lunch at Melville Chapel, Oreton.	PAGE 7
7.00 Royal British Legion meet at the Sports and Social Club	
Fri. 15th. Bingo Night at Doddington Village Hall.	
Sat. 16th 09.00 Cleobury Country Farmers Market at the Parish Church.	
10.00 Town Councillors meet the public at the Market Hall.	PAGE 58
7.00 Flicks in the Sticks, Parish Hall, features "The Banshees of Inisherin"	PAGE 27
Wed. 20th GENERAL WASTE BINS EMPTIED	
7.30 Whist Drive at Doddington Village Hall.	
Thu. 21st 10.00 Rock Pathfinders walk starts at Fountain Inn, Tenbury Wells.	PAGE 13
10.30 Cleobury W.I.coffee morning at Burford Garden Centre.	PAGE 11
Fri. 22nd 9.00 Northern Soul Disco at the Parish Hall.	PAGE 11
Sat. 23rd 10.30 Christmas Craft Fair, Barlow and Oreton village hall.	PAGE 7
Sun. 24th. 10.00 Clows Top Christmas Fairy at Victory Hall.	PAGE 7
Wed. 27th GARDEN AND FOOD WASTE BINS EMPTIED	
10.00 Walking for Health starts at the Market Hall.	
10.00 CoCo coffee morning at the Market Hall	
7.30. Clows Top Garden Club meet at the Victory Hall.	PAGE 5
Thu. 28th 12.00 noon. Neen Savage W.I. One Pot Lunch in the Market Hall.	PAGE 7
Fri. 29th. 7.30 Clows Top Wildlife Club meet at the Victory Hall.	PAGE 7
8.00 Bingo Night at Doddington Village Hall.	
Sat. 30th 2.00 Christmas Crafting at Hopton Village Hall.	PAGE 47
3.00 Christmas Fair at the Parish Church.	PAGE 58
AND LOOKING FORWARD TO DECEMBER	
Sun. 1st 7.00. Cleobury Concert Brass perform in the Parish church.	PAGE 7
Wed. 4th 7.30 Whist Drive at Doddington Village Hall.	
Sat. 7th. 7.00. New Notes Singers Christmas concert in Clee Hill Village Hall.	PAGE 7
Sun. 8th 7.30 Birmingham Philharmonic Orchestra concert at The Parish church.	PAGE 9

DEADLINE FOR THE DECEMBER/JANUARY CLARION :

NOVEMBER 22nd

Editor and Advertising Sales: Jim Reynolds, 4 Childe Road, Cleobury
Mortimer, Shropshire, DY 14 8PA

Tel: 01299 270642 Mobile: 07410 977 212 E:editor@cleoburyclarion.co.uk

Web: www.cleoburyclarion.co.uk

Printed by Badger Print. Tel: 01952 730511

Collect your Clarion in Cleobury from: Londis, Cleobury Cafe, Severn
Hospice Shop, Mid Counties Co-op, Purslows, The Library.

And out in the county:

The Blount Arms, Heath Farm Meats, Clee Hill Stores, Clows Top Store, The
Colliers Cafe, Sun & Slipper, Mamble; Hopton Bank Service Station; Ludlow
Library; Fighting Cocks, Stottesdon; Duck Inn, Chorley; Live & Let Live,
Neen Sollars; Eagle & Serpent, Kinlet; Parker Motors, Kinlet.

Also from the parish churches in: Cleobury Mortimer, Bayton, Doddington,
Hopton Wafers, Neen Savage, Neen Sollars and Stottesdon.

Paul Harding



Tree Services

- Tree surgery and felling
 - Woodland thinning & maintenance
 - Hedge trimming & grass cutting
 - Supplier of hardwood logs, kindling and garden bark
 - NPTC certified fully insured. Domestic and commercial work undertaken.
- Tel 01584 890 993 Mob 07970 878 224**

BILL'S QUALITY METALWORK

5 GREENFIELD ROAD, CRAVEN ARMS, SY7 9QU

Manufacturing Made to Measure Gates and Railings

**~Balconies and Staircases, Handrails, Carports, Structural
Steelwork and Mobile Welding Service.**

Phone Bill on 07973 248 016 or 01588 673 914



THE AGENCY UK

Local, personal *and* dedicated Estate Agents

THE LATEST FROM CORAL & TOM...

As the market enters the last quarter, we have seen steady activity following the children returning to school, with similarities in the market comparable to before the pandemic. There are many people eagerly awaiting the latest budget with the chancellor set to make a number of changes, as well as the next Bank of England base rate review which any forecasters are predicting there to be another reduction in the base rate. A base rate cut should hopefully lead to a easier end of the year than we normally see, with mid-November to Christmas time seeing a traditionally quieter period in the property market so we will eagerly be watching the news as it unfolds!

If you are considering a move next year, now is a great time to see what your home is worth and start any of the jobs that will help make you more saleable. Please do get in contact with us for a chat if you would like for us to organize a visit for advice on how best to ready your home for market.



Coralie Walrond MNAEA MARLA

Tom Jackson MNAEA



01562 541053



kidderminster@theagencyuk.com

Scan code to visit
our website



Church Street, Cleobury - £180,000

Are you searching for a characterful home in the heart of Cleobury Mortimer? How about views of the Church? Period features throughout? Well, this one is a must view for you!



How to contact the Town Council

Telephone: 01299 271154 or 07483 112290

Email: council@cleobury.org.uk

Speak to us at the Councillor Surgeries held on the third Saturday of every month in the Market Hall.

Councillor Surgery

Cllr Abbatiello, the Town Clerk and Deputy Town Clerk attended the monthly Councillor Surgery held in the Market Hall, alongside the Farmers Market, on Saturday 19th October. Items raised included queries on current planning submissions, water quality in the River Rea and the consultation currently being undertaken by Cleobury Mortimer Primary School regarding the proposed erection of a fence on the Playing Field. If you have an issue you want to raise, you can contact the office on the details above or drop into the next monthly Councillor Surgery on Saturday 16th November 2024.

Remembrance Sunday

Remembrance Sunday falls on 10th November 2024. The Parade will depart from Childe Road East Car Park at 10.45am, with a service at St Mary's commencing at the Memorial Garden at 11am.

Christmas Events

This years Christmas Fayre will take place on Saturday 30th November 2024 at St Mary's Church. Stalls will be open from 3pm within the Church. The annual light switch on will then take place at 5pm.

Booking is still available for stall holders. If you would like to be part of this event, please contact the office on the details above.

There will also be the annual Christmas Window Display competition with a chance to win the Clarion Cup.

Highway Maintenance

Please note that any issues with public highways and footpaths should be reported to Shropshire Council.

This can be done by telephone – 0345 678 9000, email – customer.service@shropshire.gov.uk, online through Shropshire Council's website www.shropshire.gov.uk or use the Fix My Street app.

Councillor Vacancy

The Town Council currently has a vacancy for a Councillor. If you have good local knowledge and are interested in our community, have good communication skills, are keen to work with community partners and can attend monthly Town Council meetings then please consider joining us. For more information, please contact us on the details at the top of this page.

Grants available to community groups

The Town Council has some funding available to support local community groups based in Cleobury Mortimer. Grants are available for activities or for equipment. If you have a project or activity which would benefit from some financial support, please contact the Town Council for further information and an application form.

Dates for your Diary

Next Council Meeting – Monday 4th November 2024 at 7pm, at the Cleobury Country Centre.

Remembrance Parade – Sunday 10th November 2024 at 10.45am, leaving from Childe Road East Car Park.

Councillor Surgery – Saturday 16th November 2024, from 10am – 12noon, at the Market Hall.

Christmas Fayre – Saturday 30th November 2024, from 3pm – 5.30pm, at St Mary's Church. Light Switch – on at 5pm.



CLEOBURY COMMUNITY HUB

Coffee Shop, Climb61, Youth Events

Mondays - 9:30am--8pm

Tuesdays - 9:30am--8pm

Fridays - 9:30am-5:30pm

Barista coffee, Paninis, Cakes and Milkshakes

FOCUS ON: November...

Saturday 2nd November - all age Mexican Night 4pm-8pm: £10 Adult, £5 Child (under 5 free)

Saturday 23rd November - Christmas SWAG making workshop:

10:45am-1pm. (Please email samantha.dolphin@outlook.com for booking)

Activities

Rock Tots (0-5years):	Mondays: 10am-12pm - Soft Play, Intro to bouldering and a healthy snack lunch (£5.70)
Kids Climbing Club (7s-11s):	Mondays: 3:30pm-5pm (£6)
Adult/Family Social Climb:	Mondays: 12pm-3pm & 5:30pm-8pm (£4, £1 shoe hire)
FREE Youth Drop-in:	Tuesdays: 3:30pm-5:30pm
Adult/Family Social Climb:	Tuesdays: 9:30am-7:30pm (£4, £1 shoe hire)
Hub Youth:	Wednesdays: 6:30pm-8pm (£2)
Good Grief Café:	Thursdays: 1st Thurs (2pm), 3rd Thurs (7pm)
Ladies Night Bouldering:	Thursdays: 1st Thurs - 6pm-8pm (£5.50)
Open Bouldering for all ages:	Fridays: 9:30am-5:30pm (£3 child, £4 adult, £1 shoe hire)
Sunday Session:	Sundays: Faith exploration, partnering with Lifecentral Church (LC) - 2:30pm: climb, games, refreshments and donuts. 4pm-5:30pm - Stream LC

Next fundraiser... Saturday 2nd November - Mexican Night 4pm-8pm

Email: climb61@cleoburyhub.org.uk

Tel: 07828 116810



Cleobury Community Hub



@cleoburycommunityhub



eme **CLEOBURY**

FACILITIES INCLUDE:

Gym 
Exercise Classes 
Sports Hall 
Outside Astro Pitch 
Netball 
Tennis Courts 

CLASS TIMETABLE

MON	9.15 - 10am	CARDIO PILATES & STRENGTH
	6.30 - 7.15pm	BODY PUMP
TUES	9.15 - 10am	YOGA
	10.15 - 11am	YOGA
	6.15 - 7pm	TRX
WED	5.15 - 6pm	PILATES
	6 - 6.45pm	CIRCUITS
THU	6 - 6.45pm	STEP & SCULPT
	7 - 7.45pm	SPIN
FRI	6 - 6.45pm	STRETCH & RELAX

Pre-Booking required for Exercise classes
Book online or at the Centre

OPENING TIMES

MON	7.30am - 10am
	10am-12.30pm GP Referral
	3.30pm - 10pm
TUE	3.30pm - 10pm
WED	7.30am - 10am
	4.30pm - 10pm
THU	4.30pm - 10pm
FRI	7.30am - 10am
	3.30pm - 10pm
SAT-SUN	7.30am - 1pm

Pre booking not required for Gym use.
Induction or Disclaimer required
in advance of use.



TEME CLEOBURY
 LOVE LANE
 CLEOBURY MORTIMER
 DY14 8PE
 ☎ 01299 271317




DOWNLOAD OUR APP




www.teme-leisure.co.uk