

The Cleobury Clarion

SERVING CLEOBURY COUNTRY

September 2018

THE WORLD'S BIGGEST COFFEE MORNING

Whoever thought up this brilliant fund-raising idea for Macmillan Cancer Care deserves a medal. It must have brought support from almost every community in the country, all to help fund the care of those in serious need.

Cleobury always turns out to help this very important cause and this year our Coffee Morning will be in the Market Hall from 10.00am until 12.00noon on Friday September 28th. You'll find Sue Henderson and her enthusiastic band of volunteers there, ready to serve you and take the vital money.

They have a target to beat. Last year the Morning raised a remarkable £688.10p in just two very busy hours. "That's the target to beat," Sue Henderson told us and with the cooperation of us all it can be done.

You can sit and chat with coffee and cake, making a happy stay-awhile. Or if you're short of time, why not just call in and give a donation to make this a record breaking Morning.

JILLY'S BRAVE SHAVE SUCCESS



Jill Pottinger after a public head shaving in the Kings Arms.

The Kings Arms was rammed full on August 16th, everyone there to cheer Jill Pottinger on as she had her head shaved. All to raise funds for Prostate Cancer UK, in memory of her dad John Cope, who lost his fight with that disease and is still sorely missed.

"I was totally overwhelmed by the number of people who came and all the support," she told us. "Who said Cleobury community spirit was lost? Not me!"

"All the raffle prizes were donated by local businesses and I would like to say a huge

'Thank you' to them. The raffle alone raised over £600."

"And a massive 'Thank you' to Wendy at the Kings Arms for hosting the event and to everyone who has supported me through this. At present the total is looking to be excess of £3,000, above and beyond what I could have imagined. And Wendy is planning an evening where a representative from Prostate Cancer UK accepts a cheque - when we know our total."

Another great result for the generosity that exists in this community. Jill's dad would have been so very proud of her.

INSIDE THIS ISSUE...

You'll find a special leaflet that details the results of the Big Cleobury Survey and what will guide the Town Council's plans for the next five years and beyond. Our Neighbourhood Plan.

A great deal of careful work by volunteers has gone into this and you'll have a chance to see and hear more at an exhibition planned for October 5th, in the Parish Hall on Church Street. It is good to see so much thought go into our future.

£50
M&S vouchers
when you purchase
a plan before
31st October
2018



**Cleobury
Funeral Directors**
9 Talbot Square
Cleobury Mortimer
SHROPSHIRE
DY14 8BQ
Call (01299) 272963
cleoburyfuneraldirectors.co.uk

In association with
Golden Charter
Smart Planning for Later Life 

Funeral plans from Cleobury Funeral Directors

CLEOBURY FUNERAL DIRECTORS

'The Local Family Funeral Company You Can Trust At Your Time Of Need'



UNDER THE PERSONAL SUPERVISION OF ADRIAN SATTERLY

Our reputation has been built on trust and professionalism. All our attention is concentrated on satisfying the needs of our clients and their families. Your neighbourhood is our neighbourhood and as Cleobury's only resident Funeral Director, with over 20 years' experience in arranging and directing funerals, we take personal pride in serving you well.

- * Pre-Payment Funeral Plans
- * Home Visits Available
- * Horse Drawn Funerals
- * 24-Hour Service
- * Monumental Masonry
- * Catering & Venue Arranged



As members of The National Society of Allied and Independent Funeral Directors (SAIF), we abide by a strict code of practice that provides further confidence in our professional service and approach.

Our premises offer full facilities for the care of your loved one, meaning they remain local to home, from the moment they come into our care until the day of the funeral.

8 - 9, TALBOT SQUARE, CLEOBURY MORTIMER

www.cleoburyfuneraldirectors.co.uk

TELEPHONE: 01299 272963 or 01299 540541

'Serving the local communities with dignity & understanding'



Golden Charter
Smart Planning for Later Life



The Cleobury Clarion, September 2018

Volume Thirteen - Edition Six



*Is this parent a spectator or is he simply tired?
Bayton School's Big Bash.
See Page 17*



*Mervyn's Epic Ride. 5097 miles
to the Arctic and back in 20 days
See Page 55*



*Clubfest saw a new local
star emerge
See Page 61.*

And On Other Pages....

5 - The Half Dead Poets Society
7 - 'Tank' Waddington Honoured
9 - That Car Park Problem.
11 - Fund Raising Fashion Show
13 - 101 Marathons So Far
15 - The Clarion Jobs Page
19 - The Legion Goes Tunnelling
21 - Severn Edge Vets
23 - Mark Bardsley Entertains
25 - Sweepy Todd - Mister Clean
27 - Letter from Westminster
29 - Cleobury Mortimer Benefice

31 - Catherton Common News
32 - The Social Calendar - Part One
33 - The Social Calendar - Part Two
37 - On The Buses
39 - September in the Wyre Forest
41 - The Swift Report
45 - The World War One Group
49 - World War One Heroes
51 - Plastic Not So Fantastic
53 - The Chorley Show
59 - Town Council News

GIVE YOUR DOG THE BEST RAW FOOD

Free Local Delivery. Quality Raw Dog & Cat Food, delivered frozen to your door.
Gordon and Rocky, your local stockist in Far Forest.

Email: gordon777@btinternet.com

Text or call 07523 805094

Website: www.nutriment.co

ALAN PRICE DIRECT TRAVEL

PRIVATE
HIRE
TRAVEL

AIRPORT
TRANSFERS

LOCAL &
LONG
DISTANCE,



COURIER
SERVICE

FRIENDLY &
RELIABLE

FULLY
COUNCIL
LICENSED

Tel: 01584 890014
MOBILE: 0773 3079679



RED  HARE

45 HIGH STREET
CLEOBURY MORTIMER
WWW.REDHARESALON.CO.UK

01299 270702

YOUR
HAIR
IS
OUR
BEST
ADVERT

PPD FREE - PARABEN FREE - SULPHATE FREE - CRUELTY FREE

“Red Hare now offers a private hairdressing room. Perfect for those wanting more privacy, peace and quiet”

Agricultural Team Legal specialists in all things rural

- Planning, Land Registration and Development
- Buying and Selling Farms and Rural Property
- Sporting and Fishing Rights
- Restrictive Covenants
- Farming Dispute Resolution
- Business Diversification
- Tenancy Agreements
- Tax Matters for the Farming Community



www.painters-solicitors.co.uk

*Serving the Wyre Forest
for over 60 Years*

For more information contact:

Nicholas Hughes on 01562 822295 or Wendy Beaumont on 01299 822033

RECOGNISING THE CARERS

Some counties, Devon is one, have an online nomination system whereby unpaid carers can be nominated to attend a Garden Party at Buckingham Palace. Shropshire does not do this. I thought that was a bit mean since they save the UK £132 Billion a year - a bloomin' postcode lottery.

So I emailed the Lord Lieutenant, Sir Algernon to see if I could get him to adopt the Devon system. I didn't manage that, but he has agreed to consider 'notable' cases. He can be contacted via the Shropshire Council's webpage on the Lord Lieutenancy <https://shropshire.gov.uk/legal-and-democratic-services/shropshire-lieutenancy/> which basically means emailing jane.palmer@shropshire.gov.uk

Gill Guest

OLD TIME MUSIC HALL

The Country Clangers will present their 5th Old Time Music Hall in Neen Sollars Victory Hall on October 12th and 13th. Tickets are £10 which includes supper which will be served from 7.00pm.

As usual this will be an evening of laughter so if you want cheering up then Neen Sollars is the place to be. Tickets, which always go quickly, can be obtained from me on 01299 272666.

Trevor Wood

THE HALF DEAD POETS' SOCIETY

The title should tell you this is a group of people who don't take life too seriously. They meet at the Library every month and simply share a wide ranging choice of poetry.

Tony Smith, better known as The Kidderminster Poet, is a regular and entertaining part of the gathering, swapping jokes and banter with his mate Bob, both of them lovers of good words. David Walford, a man with volumes of poems published and an easy way with words, adds the local talent, with Pauline Ray the only lady who regularly attends. Trying to keep that lot in order, especially after a glass or two of wine, is no easy task, but the editor is quite used to failure at solemn chairmanship.

What we do achieve is to hear work we'd not heard before, or to be reminded of a composition long forgotten from earlier years. The atmosphere is relaxed

and friendly and anyone with a feeling for poetry will find a warm welcome at 7.30 on the last Monday of the month.

Your next chance to try the experience is on the 24th. It's free to enter, free thinking is in character and laughter is the best free medicine there is.

PRINT MAKING WORKSHOPS

Pig Nose Pippin Studios are organising a series of printmaking courses here in Cleobury, with artist Fae Kilburn and producer Zoe Partington. One day a week, with Saturdays available and a lunch included for £105 and all materials provided. On Fridays there's a half day workshop for £55 and again lunch provided.

The courses will run through from early October until November and full a set of six days can be booked at the special price of £600. If you live in a local parish, contact Zoe on zoe.partington@gmail.com and enquire about a special local deal that's available. If you're coming in from some distance and need accommodation, let Zoe know and she'll help you.

SILLY BIT

"Bigamy is having one wife too many. Monogamy is the same."

Oscar Wilde

L

LUXURE AESTHETICS

Treatments available:

- * Dermaplaning
- * Muscle Relaxants
- * Dermal Fillers
- * Redensity (1)

Plus: an exclusive range of pHformula skin care treatments and products.

Sally is a professionally qualified aesthetic practitioner with over 35 years experience in the NHS, so you can be assured that you will be in safe hands.

Tel: 07376 780 480

Facebook: Luxure Aesthetics

Email: Luxureaesthetics@gmail.com

Instagram: aesthetics luxure





CM BESPOKE CARE

 **Care Quality
Commission**
Registered

S P C
Shropshire Partners In Care

Personal, Nursing and Domestic care.
Tailored to your needs.

Call for a free consultation

Tel: 01746 718816
Mobile: 07943834132

www.cmbcare.co.uk
www.facebook.com/cmbcare
email: cmbespokecare@btconnect.com



DRY CLEANING & LAUNDRY SERVICE
20 HIGH STREET, CLEOBURY MORTIMER
01299 270571
HOUSEHOLD & COMMERCIAL WORK WELCOME
FULLY ATTENDED, OPEN 7 DAYS

Self Service ~ Full Service Wash/ Dry/ Fold/ Ironing ~ Large Machine for Big Items
Service Washing for Duvets/ Blankets/ Sleeping Bags ~ Team Sports Kit Laundry Service
Equestrian Rug Cleaning ~ Laundry Service for Pet Items
Professional Shirt Service ~ Nikwax Wash & Proof for Outdoor Clothing

.... the place to air your dirty laundry!

TDC CARPENTRY SERVICES

- Fully insured qualified professional
- Excellent workmanship and quality customer care
- From hanging doors, fitting kitchens to bespoke projects

Tim Clare - 01299 270568 / 07890 519980

John Brazier & Co

Accountants & Business Advisors

Accounts – Company, Partnership and Sole Trader
Tax Returns – Corporation Tax and Personal
VAT - Returns and advice
Payroll Service including RTI

For a personal and
professional service

Contact John Brazier or Sarah Morgan to discuss your requirements on 01299 271473 or email at info@johnbrazierco.co.uk. Alternatively, you can arrange a meeting at 53, High Street, Cleobury Mortimer, Worcestershire DY14 8DQ

01299 271 473

TANK WADDINGTON HONoured

This press release was issued by Wolverhampton University on August 9th:

The prize for the best performing undergraduate Policing student has been renamed to commemorate the late Professor Waddington, founder of the Policing degree at the University of Wolverhampton. The PAJ 'Tank' Waddington Policing Prize will be awarded to the student with the best overall achievement throughout the BSc (Hons) Policing and Intelligence course. The prize will be presented for the first time at the School of Social, Historical and Political Studies graduation in September this year.

Professor Emeritus Peter 'Tank' Waddington died suddenly and tragically in March. He worked at the University of Wolverhampton from 2005 to 2015, holding the position of Professor of Social Policy until his retirement. A former Police Officer, he set up what was the first Policing degree in the country, here at the University.

Dr Pauline Anderson, Head of School of Social, Historical and Political Studies, said: "The

Faculty of Social Sciences is delighted to be able to honour the memory of Professor Waddington in this way. It is a fitting tribute to someone who made such an important and lasting contribution to the future of Police and policing."

ROCK PATHFINDERS

Another two walks to tempt you this month, both with some great countryside to savour. On Thursday the 6th there will be a 10.30 start from Bridge Street car park in Bembridge, Herefordshire, HR6 9EY or SO reference 390585.

Two weeks to recover and then on the 20th the starting point is Victory Hall in Neen Sollars DY14 0AL, or SO reference 657722. 10.30 start, as usual.

More information from Alan on 01299 400304 or visit www.rockpathfinders.16mb.com

THE FRIENDS OF SAINT MARY'S

The event to tempt you this month is a visit to the town by the Kidderminster Male Voice Choir and The Ludford Duo, who will be performing in the church on Friday the 7th at 7.30. A really good quality evening for just £10.00 that includes an interval drink.

Diane Waddington on CM 272820 can supply tickets.

THE SOROPTIMISTS

Our 70th Anniversary weekend was a great success, with good weather, company and food. Our visitors from S I Heidelberg enjoyed a guided tour and afternoon tea at the Bodenham Arboretum. The formal celebration luncheon at Spring Grove House was attended by over 100 guests, the S I Federation President, Regional President and members from other clubs in our region plus the MP for Wyre Forest, Leader of the District Council and representatives from local government and associations. After toasts we enjoyed a talk by Gillian Cane, the first woman to join the Royal Green Jackets Regiment.

So the summer holidays are over and our meetings will resume as usual at 7.30 pm on September 6th, with our Business Meeting at the Baxter Church Rooms, in Kidderminster. Our Supper/Speaker meeting at La Brasserie, Kidderminster will be at 7.00 on September 20th when we look forward to an informative talk from Kate Oakley on 'Planting Hope'.

Elke Jury

Clows Top Garage
Clows Top
Tenbury Road
Kidderminster
Worcestershire

Poppys Garden Benches

Telephone: 01299 832227



Quality Handmade Heavy Duty
Picnic Benches



Mobile: 07812559530



From a choice of either strong solid timber or beautiful Welsh cedar wood. These handcrafted benches are a must have.

Unlike flat pack benches, these are quality constructed with approximately 2 Inch thick solid wood.

Due to the sheer size and weight of these benches we do offer delivery. For more information on this, or any general enquires please contact us.



Email: D_Tramontana@hotmail.co.uk

Website: www.poppysgardenbenches.com

Professional. Affordable. Local.



Electrical Installations

No matter the size, we can gladly undertake all Domestic, Commercial and Industrial installations you require.

A family run business, with over 25 years industry experience.

From period properties to agricultural solutions, we provide a professional service every time. We also do call outs and emergency work.

Renewable Energy

Protect yourself from rising energy bills by considering renewable energy.

Solar PV is the most accessible way you can save energy by producing electricity from the sun. Earn a tax free income from the electricity your system produces.

Speak to us about how renewable energy can benefit you or your business.

Whatever your query, give us a call.

T: 07971 096267 / 08450 564173

W: www.awe-services.co.uk

Two Staks, Eagle Lane, Cleobury Mortimer, Worcs. DY14 8RA



THAT CAR PARK PROBLEM

It was a major event in the town's central car park when a mobile dental surgery moved in last December and took over close to half the parking spaces. We talked to Doctor Ann-Marie Bard, head of the Dental Practice, to find out more about the problem and its cure.

"We planned a refurbishment of the reception area," she explained. "But found we had an underfloor leak. We had copper pipes that had been set in concrete and they don't mix, so we had a flood that affected the electrics including the chairs the patients sit in for surgery. It's all had to be replaced."

"I was devastated, but the British Dental Association insurance people were really helpful and the patients have been happy we kept the surgery going. We got as many of the staff as possible to park out in the road to make access to the car park easier."

"My staff and our patients have been brilliant, through all that cold weather we had earlier. We've had to move around between the outside and indoor surgeries, but not one patient has complained."

Now the problem is all over, the mobile units moving out on June 4th and the place looking better than ever. So what's new after all that repair and refurbishment?

"We've added a small private area where we can explain the treatment to the patient. And there's a new 'phone pod where the staff can take calls in a private atmosphere that's not interrupting the receptionists' work with other patients," Dr Bard explained.

It's been a difficult six months that have tested the whole team, and they've come through with smiles all round. You can come and see the place for yourself when the surgery has an Open Evening on October 10th, from 6.30 to 8.30. The emphasis then will be on dental implants and straightening teeth by an orthodontist, plus explanations of the Cerezen treatment that treats symptoms like teeth grinding that can produce jaw pain and headaches. No need to book, just walk in, admire the smart new look and take notice of the smiles.

THE FRIENDS TOOK TEA

The tea party was held last month at Hopton Court with

guest speaker Mrs Christine Holmes, formerly the High Sheriff of Shropshire, who gave an interesting illustrated talk about her work and duties as the High Sheriff, outlining its history.

The High Sheriff is the Queen's representative in the County for all matters relating to the Judiciary and the maintenance of law and order. Much of the High Sheriff's work was spent encouraging the voluntary and statutory organisations who work in this area.

The office of High Sheriff is apolitical and as such is in a unique position to be able to bring people together within the county and to support the enormous contribution made by the emergency services, the armed forces, local authorities, church and faith groups and the voluntary community. During her year of office she visited many local events including our Open Gardens event in 2016. Her enthusiastic talk made us aware of the many willing voluntary organisations there are working in Shropshire.

Our thanks to all those who supported the event which raised £850 for The Friends of Saint Mary's.

Alec Osbaldiston



Home Support Services

All staff enhanced DBS checked with over 20yrs experience and training within the local authority/social services mainstream and dementia care sector. Fully insured.

Are you in need of support with the following basic day to day tasks?

Assistance during the day or night

Companionship

Shopping/Household tasks

Completing Forms

Pet Care

Attending social events/ appointments

Contact Liz

Tel: 01299 271623

Mob: 07826 929222

liz@lifelifeathome.co.uk

Other support services available on request.

www.lifelifeathome.co.uk

Contact Tracey

Tel: 01299 211660

Mob: 07957 659909

tracey@lifelifeathome.co.uk

Platters & Plates



Catering for:
Birthdays, Christenings, Parties,
Family Gatherings & Business Events

Based in Cleobury Mortimer

Over 30 Years in the Catering Industry

Contact Gina today for a quote:

Mobile : 07989 444 420

Email : platters.plates@hotmail.com

f : [plattersandplates](https://www.facebook.com/plattersandplates)



CARE AT HOME

Overall Good	Safe	Good
	Effective	Good
	Caring	Outstanding
	Responsive	Good
	Well-led	Good
Read overall summary		

We are a well-established family run home care provider with an excellent reputation in our local community, we are rated by the **C.Q.C** with **Good** overall with an **Outstanding** for "Is the service caring?"

Choosing care is never easy, here at T.L.C we will work closely with you to provide support which suits your needs and allows you to continue living independently your own home. We work across Wyre Forest and Worcestershire and provide support with:

- 24-hour care
- Personal care support
- Day trips and support to access your local community
- Supportive care services: Palliative care, Dementia support
- Domestic services: cleaning, cooking, laundry, shopping

For more information please call a member of our friendly management team on **01299 272 897** you can request a full brochure or arrange a no obligation meeting where we can discuss your needs in full.

Working in partnership with:

www.tlccareathome.com



FROM THE BANDROOM

Cleobury Mortimer Concert Brass have had a busy summer playing at various engagements: Stourbridge and Shrewsbury bandstands, Ironbridge Brass Festival and a wedding thrown in for good measure. We still have Rock Show and a private party at Luston to play at before we head off to Cheltenham on September 16th.

Many of us enjoyed a weekend away for Pershore Midsummer Brass and will be off to Birmingham for the live performance of 'Brassed Off' before listening to the Open Championships in Symphony Hall on September 8th. This will give us an extra boost before our own performance at the National Finals the following weekend.

We are actively seeking bass players to complete our line up, so if you are interested in joining the band please get in touch. We would be especially grateful for bass players to help us with the Remembrance Sunday parade this year.

If you are looking for a new hobby for the winter months and beyond, our training band rehearsals are held at the Parish Hall on Tuesday evenings

starting at 6.30. So if you are learning or starting up again, please come along, you will have a very warm welcome. Our training band conductor is Jack Martin.

Our website lists all contact details: www.CMCB.org.uk. Please also find us on Facebook.

Katie Griffiths

FUND RAISING FASHION SHOW

A Fashion Show in support of Hope House Children's Hospices will be held at the Golf Club on Saturday, September 29th, starting at 7.30.

There's a big range of names on offer, with prices up to 75 percent lower than usual. Like Dorothy Perkins, White Stuff, River Island, Next, Evans, New Look, Miss Selfridge, Top Shop, Wallis, Urban Outfitters, Warehouse and Monsoon. Plus French and Italian designer wear and all in sizes from 6 to 30.

This sale was a great success last year and is back again in response to popular demand. Tickets cost just £5.00 and you can get them from Spire Hairdressers in Church Street or at the Golf Club. Or you can pay on the door if yours is a last minute decision to seek a bargain and enjoy company.

A NEW ALAN BENNETT PLAY

The lively SpArC Theatre in Bishops Castle will be showing Alan Bennett's latest work, "Allelujah" on November 1st. The show starts at 7.00; book tickets on 01588 630321.

It's had some rave reviews, as you would expect for such a noted author, and it should be well worth the journey west to catch it.

CREATIVE WRITING

Six very varied people met on August 13th to swap news and views. Vicky Honeybourne had baked a tasty cake, Gill Guest was working on an article for 'Horse and Hound' and Peter Hill was proof reading a life story for a client.

Not everyone had managed to get the set piece written with all the words included, but all those who'd tried could pronounce 'somnambulist' without stumbling. Perceptive comment, light banter and laughter made for a good evening.

The trio of words for this month's exercise are: hymn, bookkeeper and rhythm, all to be presented in no more than 1,000 words reflecting an atmosphere of fear. We meet in the library at 6.30 on September 10th to offer our responses.



Tel: 01299 211977

www.oakridge-totaldogcare.co.uk

Oak Ridge Total Dog Care

Oak Ridge, Mawley, Cleobury Mortimer, Shropshire, DY14 8PT

A family run business dedicated to the care and well-being of your four-legged family members on the occasions that life gets in the way.

Our **Doggy Daycare** provides a fun and safe kennel free environment for your dog to play and interact with other dogs. With a daily activity program, we cater for all of your dog's needs giving them the care, stimulation and attention they require.

Doggy Daycare open from 7.30am-6pm, Mon-Sat (late pick-up options available)

Rates from £10.00 per half day. Discounts available for multiple & regular bookings.

**Birthday Parties
Holiday Activity Days**

**Climbing / Abseiling
High Ropes
Raft Building
Zip Wire
Big Bounce
Challenge Course
Indoor Caving
Ask about others**



**Tel: 01299 271217
Enquiries@pioneercentre.org.uk**



Minimum Age 8yrs

**90 minute Session
£11 per person
Minimum 10 people**

**3 hour Session
£20 per person
Minimum 10 people**

**Hire a room for an hour
After your session
To cut the cake etc £15**



CLEOBURY MEMORIALS

(Part of Cleobury Funeral Directors)

- * New Memorials & Cremation Tablets
- * Restoration & Repairs To Existing Stones
- * Additional Lettering & New Inscriptions
- * Grave Care & Maintenance



Our Mason is an accredited member of the British Register of Memorial Masons with a City & Guilds Qualification in Memorial Masonry. He is also a BRAMM licensed memorial fitter.

8-9 Talbot Square, Cleobury Mortimer. DY14 8BQ

Telephone: 01299 272963 or 01299 540541



All Aspects of carpentry work undertaken

Level 3 City & Guilds in Carpentry & Joinery, 20 years of experience

Tel: 07854 032750

Email: duncpearce1@gmail.com

MARK WILLIAMS - PROFESSIONAL WILLWRITER

"A lifetime's attention to complex legal issues as a retired Detective Superintendent and now a Private Client Lawyer means **you can definitely trust Mark** to write your Will."

Wills or Lasting Powers of Attorney from £85, Free Will Reviews,

Also: Probate Support, Care Home Fee Avoidance

& Big Savings on Funeral Plans

Instructions taken in the comfort of your own home or workplace

T: 01299 251442 M: 07966 053887

E: mark@ambalegalservices.co.uk W: ambalegalservices.co.uk

Fellow of the Institute of Professional Willwriters & Trading Standards Approved

VICKI HULME - 100 MARATHONS AND COUNTING



Vicki Hulme, a remarkable young woman with energy and a big heart
It's just a little disarming to sit and chat to Vicki Hulme. This young woman had run 101 marathons when we talked and seemed to regard it as a normal thing to do. That list includes one 75 mile run in Kent, where she reckoned she covered ground more quickly than she did on the dreaded M25.

Now she has a very ambitious project in view, raising funds for the Brathay Trust that works to improve the life chances of young people by engaging them in their communities. She'll be one of just four women in a

band of 17 runners who will be running ten marathons in ten days. A marathon, in case you didn't know, is 26.2 miles.

This will be in May 2019 at Lake Windermere in Cumbria. A lap of the lake is the marathon distance, most of it on road surfaces, which will be hard on the feet.

Her aim is to raise £3,000 for the Trust and if you want to back her, Just Giving details are lower down the page. I was so impressed by her modesty and determination that the Clarion has donated already.

So how did she get into marathon running in the first place? "It was in 2012 and I just wanted to lose weight," she explains. She started with the Fountain Fun Runners and today runs with both Cleobury Running Club and the Cider and Scratchings Club, who are based at the Sports and Social Club. "Jo Watson and Andie Ford wanted to do more structured running, but I do a bit of that and the more relaxed style." You can measure her improved fitness by comparing her first marathon time in 2012, when she took 5 hours and 30 minutes to finish in a Telford run, while today she covers the same distance in 4 hours and 11

minutes. That's something close to a 20 percent faster time.

She trains every other day, running anything between three and fifteen miles on top of her work as a carer. She admits that her diet in recent months has not been the best, snacking as she worked 50 hours a week and fitted in training runs when she could. By the time you read this she'll have moved jobs to Capulet, the people behind the new Cleobury Hills care home, based at their Wolverhampton home until Cleobury Hills opens next year. She'll work less hours and have less travel, so will be able to move on to a more appropriate diet to help keep her fitness level up.

You can help her reach that £3,000 target by donating on just giving.com/fundraising/vicki-hulme1. She deserves the support of us all.

Vicki's friend Vicky Honeybourne is organising a quiz at the Sports and Social Club on September 21st, starting at 7.00. The entry fee is £5.00 per person in teams up to five people. There's a growing range of prizes and you can book your tickets with Vicki Hulme on 07530 856 487 or buy them at the Sports and Social Club. See you there. JR



Mannerly Mutts



Dog Behaviour, Training, Walking and Sitting

 Behavioural Consultations	 Fully CRB Enhanced Checked
 Training Classes for Puppies & Adults	 Walking, House Sitting, Home Boarding
 One to One Training	 Home Security

 www.mannerlymutts.co.uk  

jo@mannerlymutts.co.uk 01299 270514  



BAGGINSWOOD

Bagginswood, Cleobury Mortimer,
Nr. Kidderminster, Wores. DY14 8NB

Telephone: 01746 718732

HEATH FARM MEATS

Home produced beef, pork, lamb and mutton.

Home cured bacon, gammon, sausages,
cakes, pickles and preserves.

OPEN 8.00 am to 5.30 pm

WEDNESDAY TO SATURDAY

01746 718732

Flowers By Fiona est 1991

Fresh Flowers made to order

Special Occasions

Weddings, Anniversaries, Birthdays

Sympathy Tributes

19a High Street,
Cleobury Mortimer

Tel: 01299 272 995



Stove Installations, Service and Repair

- All solid fuel wood burners and boilers supplied and installed
- Chimneys relined and twin wall systems built
- Chimney Pots, Cowls, Carbon Monoxide alarms and Air Bricks fitted
- All Stoves and Fires serviced including chimney sweep
- Hetas Landlord Safety Certificates

Tel: 01299 272712 Mbl: 07807 343006

email: info@rweaversservices.co.uk



PODIATRY/CHIROPODY

Debby Luxton. HCPC Registered

Treating and Caring for Feet
General and Specialised
(Verruca and Fungal Nail)

www.ludlowpodiatrist.co.uk

We are both highly qualified, very experienced
and absolutely dedicated to providing our
patients with the best quality care in our
respective disciplines.

We have many testimonials from patients, some
are on our websites and a couple to the right.



Middleton | Ludlow | SY8 3EF

T: 01584 823331

OSTEOPATHY

Ian Luxton. GOSC Registered

Treating Pain and Injury
Acute and Chronic
Head to Toe

www.ludlowosteopath.co.uk

*"I'm now free of discomfort due to the
excellent and wholly appropriate
treatment you have given me."*

*"We have greatly appreciated your
attention and trusted your advice."*

BAR STAFF - ROYAL FOUNTAIN INN

Friendly reliable bar staff required to join our small working family.

Full training available.

**Pop in with a CV or send it to the.royal.fountain.inn@gmail.com
or via Facebook messenger**

Thank you for advertising our two vacancies I am pleased to tell that both posts were filled within the week!
Mrs Pat Smith, Parish Hall Committee member

Job Title/ Company	Job Requirements	How to Apply
Cleobury Mortimer Garage: Full time MOT Tester/mechanic	Experience required. 40 x hours per week Reliable and responsible candidate required. Salary subject to contract	Please contact: Tel: 01299 270208
Little Lakes Leisure Ltd: Part time office assistant	Friday 9-5, Saturday & Sunday 10-4 General clerical duties, answering the phone and dealing with park members on a daily basis	Please contact: Park@littlakesleisure.co.uk Tel: 01299 266400



Shropshire
Fire and Rescue Service

On-Call Firefighters Cleobury Mortimer (Retained Duty System)

Shropshire Fire and Rescue Service is currently looking to recruit on-call firefighters at Cleobury Mortimer Fire Station. On-call firefighters agree to be available for a certain number of hours per week; they carry a pager and must be able to get to the fire station within five minutes. For this they are paid between £1,587 - £2,116 per annum (dependent on contract) as a Retaining Fee plus payments for attending incidents and drill evenings at Cleobury Mortimer fire station.

TO APPLY YOU MUST LIVE OR WORK WITHIN 5 MINUTES OF CLEOBURY MORTIMER FIRE STATION

To be a Firefighter requires special skills and qualities, not only do you need to be able to work under pressure as part of a team at operational incidents you need effective communication skills to deal with the public at fire safety events and in their homes. You will work within your local community to support our aim of preventing fire related incidents and road traffic collisions. The Service is looking for people aged 18 or more on their start date who can demonstrate a high level of physical fitness

For an information pack please contact us on 01743 260220, or email HRAssistants@shropshirefire.gov.uk, stating your name, address and quoting Cleobury Mortimer

Shropshire Fire and Rescue Service is committed to equality and diversity at work. We positively welcome applications from disabled people and minority groups who are under-represented in our Service.



Gilbert Carter

Specialist Joinery

- Built in Wardrobes
- Double Glazed Wooden Windows
- Staircases
-

www.gcartersmartjoinery.com

**01299
270626**

Qualified tradesmen, fully insured

CLEOBURY MORTIMER CARPETS

Supplying and Fitting of:-

- Carpets
- Natural floorings (Cair, Sisal & Seagrass)
- Vinyls

Carpets supplied by: Victoria Carpets, Fibre Flooring
& Alternative Flooring at Unbeatable Prices

Contact Details:-

Address: 26 High Street
Cleobury Mortimer • DY14 8BY
Telephone: H: 01299 270095
M: 07739 186163
Email: garethleach@aol.com
or check out our new website
www.cleoburymortimercarpets.co.uk

INFINITE ELECTRICAL SOLUTIONS

For all your electrical needs:

House rewires

Fuse board upgrades

Electric showers

Need an extra socket or light installed?

No job too small



For a FREE quote

Call Lloyd 01584 811184



Gordon's Motoring School

DVSA Approved - Advanced Driving Instructor (ADI)

Nervous, shy pupils and learning difficulties, all ages and genders welcome.

Friendly, patient and reliable. Enjoyable fun lessons.

Discount packages available for ten lessons or more.

All Local Areas Covered.

Call Gordon on 07523 805 094

www.gordonsmotoringschool.co.uk

BAYTON'S BIG BASH

It was the Bayton C of E Primary School's Fete. Change the name to give it an extra charge if you want to, but this is a place where people know they'll have a good time.

There was a flattering call as I took my cup of tea into the hall and settled down for a gentle few minutes before circulating. "Mr Reynolds, we're ready," said a charming lady. Errr, ready for what?

There were pupils lined up, balloons in hand, ready to let them go into whatever part of the sky they would reach. Out with the camera, line them up in the right order and wait for the launch. Around me, parents with phones in camera mode were ready for the crucial moment.

You learn with experience to keep a weather eye open for the odd stray intruder who hasn't realised that a row of cameras is a clue to something about to happen. I managed to capture the release moment just before a proud grandad walked across in front of us to whatever stall had caught his granddaughter's eye. The comments from one or two of the parents who had not seen the intruder coming were quite interesting...



"Three, two, one...go!" and a whole flock of balloons heads for the sky.

A very thoughtful idea was the VIP Area, reserved for pupils about to leave and move up to the secondary level of education. An Educational Departure Lounge in fact, with free soft drinks and treats.



There were lots of fun games, the tin can shy - more noisy than coconuts when they fall over - a very popular spot. And there was a licensed bar for harassed parents and thirsty grandparents.

I chatted to Pat Collins, ex landlord at the Talbot Hotel, there to watch over his granddaughter, who ran back and forth asking for a little more money to try her hand at another stall. Each time she came back it was with a prize. Obviously a good investment, though Pat did not seem to see it that way. He looks solemn, but underneath that there's a proud softy happy to be involved.

The event started shortly before the school pupils actually finished for the afternoon, so they emerged to an event up and ready to go. Good thinking. By about 4.30 it was over and all were on their way home and looking forward to the summer holiday.

This school does have a very happy atmosphere about it. One of those places you walk into and the ethos of cooperation and achievement is in the air. In such a lovely rural setting, next door to the Little Learners nursery and all the surrounding roads clearly marked with a 20mph limit. Child friendly.

MIKE AND SHELLEY ROBERTS

Haulage Contractors

Supplier of Aggregate and Asphalt products

12 Lacon Close, Cleobury Mortimer DY14 8EF

07860 669350

07966 045012



A small family run business specialising in quality wooden gates to suit all entrances.

Visit our website: www.turnersgates.co.uk

Drop us an email: turnersgates@outlook.com

Or give us a call on: 01299 270 965



MAWLEY OAK TRAVEL & GARAGE

Llandudno Turkey & Tinsel

Monday 5th Nov - Friday 9th Nov 2018

Staying at Somerset Hotel

This Hotel is situated on the sea front with the Town centre only a 10 minute stroll along the flat Promenade.

£245 Per Person

Price Includes:

Return Coach Travel

Bed and breakfast

Evening Meal

Entertainment

Two Half day excursions

Please Ring 01299 270 207

For more information

Servicing, repairs & Tyres

*MOT'S	*Exhausts	*Tyres
*Servicing	*Clutches	*welding
*Diagnostics	*Cam Belts	*Shocks

We offer a local collection & delivery service.
Courtesy car available (conditions apply)



We Currently have special offers for Local companies and their employees. call Rick or Beth for more information.

Call Today to book in 01299 270 207

THE LEGION GOES TUNNELLING

The chance to travel through the canal tunnel beneath the heart of Dudley was too good to miss. To visit history stretching back to the 18th century, thanks to Dr Mark Baldwin's thorough organisation for the British Legion.

29 of us boarded the bus and regular drivers made the most of the opportunity to enjoy the scenery as we picked our way through Worcestershire and into the complexities of the Black Country roads network. Only one wrong turning, quickly corrected by a competent driver before we arrived at the canal quayside and a smart narrow boat.

Hard hats were issued, with a request to be careful if we chose to stand up. The boat was a modern craft, steel hulled and smoothly driven by electricity. Into the first part of the tunnel, this section's roof construction in brick, but it varied throughout our journey.



The brick roofing reflected the strata through which we travelled, varying from limestone through coal to hard rock.

Our guide chatted happily, explaining some impressive facts. Like the 100 metre stretch through hard rock, where dynamite was the essential tool. Plus hand drills to penetrate the rock for the explosive to be placed before the men moved to safety and the fuse was lit. That 100 metre stretch took a whole year to complete.

The Dudley Canal Tunnel is 3,172 yards long; work on it started in 1775 and was completed in 1791. It was the initiative of Lord Dudley and Ward, to link his Tipton colliery and lime works to the Birmingham Canal Navigations. We must bear in mind that in those distant days the most effective way of moving goods and materials in any great bulk was by canal. Boring such a complex of tunnels beneath Dudley's Castle Hill reflected original thinking and some great determination and investment.

When the use of canals faded in the face of railway and road transport, the British Transport Commission proposed in 1959 that the canals should be closed. Not a popular idea in the proud Black Country, and the British Waterways Association organised protests. The canals were partly closed in 1962, and there was a plan to develop the railway links instead. Along came Doctor Beeching, who closed the railway and the canals were reopened.

One of the ancient methods of moving barges through these narrow tunnels, which have no towpaths for horses to pull the boat, was walking. Members of the crew lay on a board and walked along the tunnel wall,

moving the boat slowly but surely towards its destination.

Our guide asked if any of the party would care to try this novel form of exercise and Doctor Baldwin and Elizabeth Bishop promptly volunteered. For Doctor Baldwin, who has published numerous books about canals and their craft, it was a chance to broaden his experience. For Elizabeth, who has wing walked, abseiled and parachuted, it was just a stroll.



As a way of getting know someone, it was certainly novel.

The tunnels are ventilated by vertical shafts at intervals and when they reach a basin, darkness turns to sunlight and greenery is all around.



A good day out at a remarkable place, well worth a visit. Look in at www.dudleycanaltrust.co.uk or talk to them on 0121 557 6265.



Excellence in education since 1620

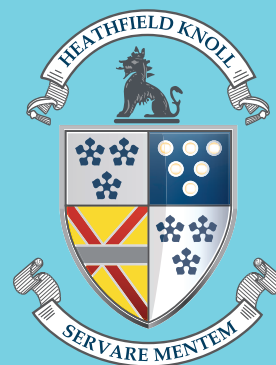
We've been unlocking the potential of children for nearly 400 years. We offer the best opportunity to boys and girls from three months to 16 years old.

Open Events

Thursday 13th September 5.30pm-7.30pm

Saturday 15th September 10am-12pm

To find out more, call our Admissions Secretary on 01562 850204.



What is Lyme disease?

Lyme disease is a bacterial illness that affects humans and animals. The bacterium that causes Lyme disease, *Borrelia burgdorferi*, is transmitted through tick bites. Ticks themselves do not cause the disease but harbour and transmit the bacteria that cause it.

Once a tick is attached it takes 24-48hrs to transmit the bacteria that cause the disease so prompt identification and removal is key to preventing transmission.

Transmission is from tick to host only – the disease cannot be transmitted from dog to dog, or dog to human. However, walking dogs may make owners more likely to encounter tick infested areas, and sharing a common environment means that dogs may bring unattached ticks into the household.

Symptoms

Some infected animals show no symptoms at all, others take weeks or months to develop clinical signs and these can fluctuate over time. Typical symptoms can include:

- Fever
- Lethargy
- Loss of appetite
- Joint swelling
- Lameness

Recurrent 'shifting leg lameness', with joint swelling and tenderness migrating from one extremity to another over a period of days or weeks, is also a possibility.

Diagnosis

Tests for Lyme disease in dogs do not always provide a definitive answer – dogs can produce antibodies against *Borrelia* indicating that they have had contact with the bacteria but are not necessarily suffering with active disease. Due to the broad nature of symptoms, diagnosis is therefore usually made on a combination of assessment of clinical signs and test results to rule out other more common conditions.

Treatment

An extended course of antibiotics provides effective treatment.

Prevention

A vaccine is available for dogs – these appear to work best in dogs when given before exposure to

the Lyme-causing bacteria. Speak with your vet about your pet's suitability for the vaccine.

Dogs should be treated regularly with an effective tick preventative or tick repellent product. Your vet or veterinary nurse can recommend the most effective products for your pet's lifestyle. Risk of transmission is highest when the ticks are actively seeking hosts in spring and autumn but ticks are active at any temperature above freezing so year round treatment and vigilance is important.

Dogs should be routinely checked for ticks after spending time outside and any attached ticks promptly removed. Tick hooks are available to purchase at our branches and are the best tool to use. Tweezers or other methods risk leaving the mouthparts of the tick behind and other methods involving 'suffocating' the tick increase the risk of distressing the tick and causing it to regurgitate bacteria into the pet's bloodstream.

If in any doubt about effective removal, book an appointment to see one of our nurses who will be happy to remove it for you and to demonstrate the safest technique.

If you think you or anyone in your family may have been bitten by a tick, consult your GP for further advice.



Severn Edge
VETERINARY GROUP

Mobile Vet Service

RCVS
ACCREDITED
PRACTICE

'No stress and all the home comforts'
Available Mon-Fri, 9am-3pm
01746 713 914

Terms and Conditions Apply. Severn Edge Veterinary Group is the trading name of Severn Edge Veterinary Group Limited, a limited company registered in England & Wales, no. 9523786.

www.sevg.co.uk

Mark Pearce

Landscape, Design and Rustic Garden Furniture

- Fencing
- Patios
- Drives
- Decking
- Garden Sheds
- Summer Houses
- Fence Panels
- Log Stores



And Much More

Top Quality Fully Treated Timber Products

Mobile: 07875425028

Tel: 01746718404

Robert Bradley Logs

07794 798616



*Seasoned Firewood, Hardwood,
Softwood or Mixed loads of logs.
Free Local Delivery*



Produced & bottled at
Mawley Town Farm,
Clebury Mortimer
01299 270359

Mawley Milk
direct from the cows
to a shop near you!

We guarantee you won't find tastier fresher milk with so little food miles.
Early morning doorstep delivery available in Clebury Mortimer

Like us on Facebook/Mawleytownfarm

To find your nearest stockist visit our website www.mawleytownfarm.co.uk
email: info@mawleytownfarm.co.uk

AL Pass Driving School

You never forget the day you

Pass your driving test

Introductory lesson **free!**

Your local driving Instructor 0789 67 41041



MARK BARDSLEY ENTERTAINS



Holding young children's attention takes a lot of doing. Mark succeeds with a variety of skills.

In the last issue we suggested that the children's entertainment in the library on August 10th would be good. The Clarion arrived too late to hear Mark's full flow, but Clare Todd nodded approval and said how good he was. That's high praise indeed. And the children were still quiet and paying attention, waiting to ask him questions when the session was over - higher praise.

He's certainly a versatile man, having worked as an illustrator for 30 years, writing poetry since he was at school and now playing a celtic harp to make

good music with his wife Debra. They have a new album out: "Queen of the Rushes." You can listen to some tracks on www.bardsleymusic.com and order it if gentle folk music with strong ethnic roots is your taste.

He's actually on a tour through Shropshire, his native county, entertaining and amusing children with poems and cartoons, sketching away as the youngsters guess what is emerging. It suits Mark, because the journey reminds him of places and people he's met, as well as providing new material for poems. All 63 of them, that will grace his new book, all illustrated and 63 in number because that's how many A E Housman presented in his great work 'A Shropshire Lad.' And to add to the coincidence, Mark was born in 1963.

He finds inspiration in a wide range of sources. Like climbing up the Stiperstones and sitting in the Devil's Chair to write a deeply reflective poem that is a counterpoint to the legend which surrounds that place. Or the late 19th century photo known as 'The Shires of Ellerdine', showing five shire horses that had been struck by lightning, people standing around them with shocked

expressions. The effect upon the farmer or wagoner whose horses they were can only be guessed at.

This is Mark's poem as a tribute to those five fine horses:

There lie the five horses;
Tipped on their side like toys.
Shock overcoming
The children who weep
For these treasured companions,
Lost now in sleep.


The sky - golden again
Has ceased its indifferent killing.
Gone is the great sparking anvil
And the hammer striking
dreams.

The ploughboys doff their caps
And the burnt grass steams.

This is an entertaining, thinking man who brings pleasure to a lot of people. If you get the chance to listen to him, grab it with both hands. To know more about his work: www.markbardsleyillustration.co.uk JR.

SILLY BIT

Los Angeles Police had good luck with a robbery suspect in an identity line-up. When detectives asked each man to repeat the words "Give me all the money or I'll shoot," the suspect shouted "That's not what I said!"




IRENA S.A.C DIP. (DIST). N.C.F.E. M.C.F.H.P.
FOOT HEALTH CARE PRACTITIONER

All your foot problems dealt with:-

- Foot health check • Verrucas etc.
- Corns • Medical Manicure
- Callus • Medical Pedicure

Free vascular Doppler Check of your feet

The Old Farmhouse
Button Bridge, nr Bewdley
DY12 3AW



Mobile visits available
01299 841 277
hessins@gmail.com

The Miah Brothers Famous Spice Empire

Bringing great taste and value to Cleobury Mortimer for 17 years



17 High Street, Cleobury Mortimer
6-11pm 6 Days a Week
Acclaimed Indian restaurant with
wide range to suit all tastes.
Sunday Buffet from 12.00pm-
9.00pm.
As much as you can eat for just
£9.95 a head.
Free home delivery up to 5miles
Reservations: **01299 270419**



6/7 Church Street, Cleobury Mortimer
*'Fine bar, excellent food at prices to
suit all pockets'*
Top Value dining.
Our Dine In Meal Deal gives you a:
starter, main course and naan or
rice for just £9.95.
Tuesday to Sunday, 6.00-11.00pm
Reservations: **01299 271485**



57 High Street, Cleobury Mortimer
6-11pm Wednesday- Sunday
Dine at home with the same great
quality our restaurant offers.
Monday- Tuesday
collect Takeaways from
Spice Empire:
Tel: 01299 270419
Free home delivery up to 5miles.
Orders: **01299 271604**

SPICE NEWS:

Orders over £40 come with free bottle of wine. Free Delivery up to 5miles from the Spice Empire & Spice Express.
www.facebook.com/pages/the-spice-empire

Bayton Church of England Primary School

Be the best you can be!



*OFSTED and SIAMS church inspections have both graded us as being
OUTSTANDING so why not see for yourselves!*

We look forward to welcoming you!

www.baytonceprimary.co.uk

Headteacher : Ms J Simmonds

Telephone : 01299 832393

A MUCKY JOB DONE CLEANLY

Confession time. I have a Certificate of Chimney Sweeping issued by Colin Todd in July. It tells me how often a chimney should be swept, with my wood burner ideally getting the treatment every three months if it's in use. I only use it when the temperature gets down near freezing, but this was its first sweeping since Gary Harding installed it, and I won't tell you how long ago that was.

So this job was long overdue. But Mr Todd was more than equal to the situation, taking a look at the small stove and blanking off the front aperture with a blanket retained by magnets to prevent extrusion of dust.



There were three operations that I could follow: vacuum cleaning the stove body and vents, rodding the brush up through the chimney stack and cleaning the sump in the outside chimney. If there was a speck of dirt left, I couldn't see it.

The inspection cover on the outside sump apparently

should have a drain plug. Good logic at the bottom of a long tube pointing up into whatever rainfall the seasons bring.

Access to that chimney was quite a headache, with a virulent clematis climbing up and wrapping its tendrils around the shiny tube. Once Colin had fought his way through to the sump and drained the water there - hence the need for a plug - it was time for a reminder that no plant should be within 50mm of the chimney, because of fire risk. A task to be completed when it's autumn pruning time.

He was on the job not far short of an hour, before packing away his tools and heading for his next call, in Cheshire. It was an impressive service, coming with safety advice and all for a reasonable sum.



COUNTRY SKILLS

CPCS/NPTC Approved—fully insured

- Outside Renovation
- Tree Surgery, Hard Landscaping
- Slabbing and Fencing
- Decking, Roofing
- Contract Mowing

Call for a free quotation

R. Price & Sons

Mobile: 07967 140720 Email: roger@countryskills.co.uk



- ♦ Professionally Trained Chimney Sweep
- ♦ Fully Insured
- ♦ Certificates Issued
- ♦ Cowl Fitting
- ♦ Stove Servicing



07519 873976 Sweepy.todd@gmail.com

Firewood

Seasoned logs, barn dried & ready to burn.

Free local delivery -01584 890993 or 07970878224

Various size loads available



Paul Harding Tree Services



Cleobury Opticians

NHS & private eye tests ♦ FREE children's glasses ♦ FREE NHS glasses
♦ Home visits



Primary Eye-care Assessment
and Referral Service



Opening Times-	
Tuesday	9am-1pm 2pm-5pm
Wednesday	9am-1pm 2pm-5pm
Thursday	9am-1pm 2pm-5pm
Friday	10am-2pm
Saturday	9am-1pm

www.cleburyopticians.co.uk

16 Church Street, Cleobury Mortimer, Kidderminster
DY14 8BX

Tel: **01299 270012**

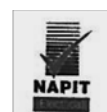
Email: cleburyopticians@outlook.com



Electrical & Security

Tel: **07973 112463 (Anytime)**

01299 489223



- Full/ Part Installations
- Existing System Updates
- Alarm & Security Systems
- PAT Testing
- Domestic and Commercial Properties
- Electrical Problems

- Landlords & Electrical Safety Certification
- Upgrades
- Free Callouts and Quotes
- For Existing and New Installations and Security.

Part P + Full Scope Registration

Card Payments Accepted



Fast Friendly Service, No Job Too Small

BODEN & SON DELIVERIES est. 2013

Delivering fresh Mawley Milk from the farm to your doorstep

Delivering to:

CLEOBURY MORTIMER, CLEE HILL, CLOWSTOP, BAYTON, MAMBLE, ROCK,
FAR FOREST, CALLOW & BEWDLEY.

Also selling many other items

Telephone: **01584 891550**

EMAIL n.bowden30@gmail.com



With the summer holidays drawing to a close, the new school year begins this month for pupils across Shropshire. During last summer term I visited many local primaries and enjoyed being quizzed by some very engaged children, as well as chatting to Headteachers and Governors about their schools and issues they face.

In local towns, our schools generally remain in a good position, but even they are not immune to the underlying challenge in our rural areas, where it is getting tougher to maintain the number of pupils on school rolls. This reflects the ongoing demographic shift in Shropshire, with fewer young families living in our more rural countryside locally, so less demand for school places.

One element in resolving this dilemma will be ensuring sufficient development of local housing, so young families are not priced out of the county. But this will take some years to feed through to our schools. So many local schools have looked to more immediate solutions, including joining forces through federations or Educational Trusts. This helps control costs and share staff and resources – reducing pressure on funding while ensuring children are given a well-rounded education.

I am well aware that schools also face funding pressures as a result of measures affecting all employers, like the rising minimum wage for some support staff and auto-enrolment of workplace pensions. The government is putting significant additional funding into schools, with Core School Funding increasing by £1.3bn to £42.4bn this year, and rising again to £43.5bn next year. This comes as we transition to a

national funding formula, which will maintain overall per pupil funding in real terms for the next two years. I am encouraged that under the national funding formula, rural schools will gain on average 3.9 per cent, with those schools in the most remote locations gaining 5.0 per cent. This should help many South Shropshire schools, although I am aware some larger schools may not benefit.

The new national funding formula will increase the basic amount allocated for every pupil and will allocate a minimum per pupil funding level for both secondary and primary schools to target the lowest funded schools. It will provide a minimum cash increase for every school of 1 per cent per pupil by 2019-20, with the most underfunded schools seeing rises of 3 per cent per pupil in 2018-19 and 2019-20. I am also encouraged that every school will receive a lump sum of £110,000 to help with fixed costs, which again will help our smaller rural schools.

I am pleased many schools in South Shropshire take up the opportunity to visit Parliament, to see Westminster and to learn more about the way in which our democracy works. I will be encouraging more schools to make the trip when they can, as the Parliamentary education team ensure a really exciting educational day for those children who visit.

On a final note, I write before learning how Shropshire schools have fared in the summer exams, but I hope all local students got the results for which they were hoping.

Philip Dunne MP

I.P.T. GROUND SOLUTIONS

Over 30 years experience

For all pipe installations:

- Sewage • Storm drainage
- Blockage/Repairs • Ditches
- Landscaping • Driveways
- Ground clearance

For all your ground needs

Contact Ian on:

T: 07870 384 096

E: ian.ptaylor@yahoo.com

W: iptgroundsolutions.co.uk

The Fighting Cocks Inn Stottesdon



An historic inn, officially dating back to 1830 as a pub, but older as a coaching inn, and a brew house. The Fighting Cocks is famed for its passion for local produce, real ales, and initiatives to support the local community. We sell local produce from the pub and shop including local fruit, vegetables, meats, and of course the pub's famous homemade pies. Homemade puddings are also served both in the pub and the shop - but you will need to get here early!

Steak Nights Every Friday
10oz local ribeye or rump
From only £9.95

Fish & Chips Night
Every Wednesday
6:30pm – 8:30pm

Live Music
Saturday Evenings



1 High Street, Stottesdon DY14 8TZ ♦ Tel: 01746 718270 ♦ www.fightingcocks.co.uk

Heath Hills General Household Repairs

For all your garden and house repairs

Lawn mowing, strimming, tree surgery, household repairs, plumbing, electrical,
carpentry, roofing, no job too large or small, long term contracts welcome

Fully certified in all trades

Free quotations

For a fast reliable local service

Call us on

07508145343

THE SPORTS AND SOCIAL CLUB

First of all, an apology for misleading readers about the availability of Chinny's Mobile Fish and Chips outside the Club. Chris Mullett informs me that after 31st August, Chinny's will be there every Friday, between 5.00 and 10.00pm, unless either he or the Social Club has a private function on. Chris advises that folks check either his or the Social Club's Facebook pages as this will confirm his attendance. Chinny's will also be present outside the Social Club for Cleobury Rugby Club's home games during the coming season.

On Friday, September 7th, Just Charlotte will be in the Club, providing entertainment from 8.00pm. The Cleobury Stroke Support Group will meet on September 25th from 2.00pm

Come along and sing and dance to the music of an Oompah band as the Club enters into the spirit of Oktoberfest on September 28th. Tickets are £5, plus a charge for food, and are available from the Social Club.

For more details and information, please contact our Steward, Gemma Canty on

01299 271448 or via our Facebook page.

Glenys Turpin

LET'S HELP JOSH

Josh Brown is a pupil at Lacon Childe School, a young man with a good sense of morals. He is planning to travel out to Tanzania in the summer of 2019, with a party organised by Camps International.

He'll be there for four weeks, helping to build a new school classroom and kindergarten and helping to instal new water facilities to provide fresh and clean drinking water. He will also be digging animal water holes, because animals are a vital source of income, plus he'll help with deworming livestock and aid the local rangers protect the animals from poachers. You'll gather that this will not be a rest cure.

What he also has to do is raise a cool £4,000 to finance his trip and he's offering to do just about any job to reach that figure. Car washing, dog walking, lawn mowing, watering your garden while you're away on holiday, you think of a job you want doing and he'll take it on. Contact him on tojoshbrown@gmail.com or you can contribute a donation at [www.gofundme.com/travel-to-](http://www.gofundme.com/travel-to-tanzania)

[tanzania](http://www.gofundme.com/travel-to-tanzania). It's great to see such a young man so determined to reach that target just so that he can travel all that way to help other people.

KNOWLE HOUSEHOLD GOODS SALE

Just a reminder that the popular sales of household goods at Knowle Sports Club is open at 8.00 on this Saturday morning, the first of the month. And on Wednesday the 12th, they have a special Evening Sale from 6.00 until 7.30.

The Club is on the road from Clee Hill to Tenbury Wells and you can't miss it on sale days because of the cars parked there. It's a great place for bargains.

DEMENTIA MEETING REMINDER

Just a memory jogger that there's a meeting in the Cleobury Country Centre at 11.00 on Monday the 3rd of this month. It's open to the public and Councillor Jon Bodenham will be aiming recruit a Steering Group and to offer a briefing to both businesses and supporters. All part of a drive to make the town Dementia Friendly and establish a level of understanding and cooperation.



Vehicle sales & valeting

DOES THE CAR NEED A SPRUCE
FOR THE WINTER?

GIVE ASHLEY A CALL FOR A QUOTE

FULL OR PART VALETS TO YOUR BUDGET
(BOOKING ESSENTIAL)

Tel: 01299 271365

Mobile: 07710 913401



Style House Salon

Your modern salon suitable for all ages

01299

271919



38 High Street,
Cleobury Mortimer
DY14 8DQ

CARROT TOPS

28 HIGH STREET, CLEOBURY MORTIMER

Come in and see what a wide range of fruit and vegetables we offer.

And all at a price that will surprise and please you!

Open from 7.30am to 5.00pm Monday to Friday, 7.30 to 3.30 on Saturday
and 9.00 to 1.00 on Sunday.

Boxed deliveries to your door our speciality and pleasure.

TELEPHONE: 01299 488118

WE NOW STOCK BOWKETT'S MEATS

Stewart Mumford Architectural Services Bespoke Architecture

Great value personal service backed up with extensive local knowledge,
established links with other construction professionals to ensure
comprehensive packages specifically tailored to individual needs.

Initial consultation free of charge.

Specialist in Works to Listed Buildings, Affordable Houses,
Open Market Houses, House Extension and Alteration, Barn
Conversion and Commercial Projects.



T: 01299 271068

M: 07977 921039

E: office@stewartmumford.co.uk

Posh Potties

Luxury Designer Toilet Hire

A Family run business who specialise in the hire of :

Luxury Mobile Toilet Trailers and Refrigerated Units for outdoor events.

We have all types of Portable Toilets available to hire – from Plastic Portaloos to Large Luxury Toilet Trailers.

We can also provide Refrigerated Trailer Hire

Please visit our website or contact Emma or Chris on 01746 718518 / 07929 314020 for more information.

www.poshpotties.co.uk Oreton, Cleobury Mortimer emma@poshpotties.co.uk

CLEOBURY PATIENTS' VOICE

Public Health England launched a campaign on July 19th. Put quite simply, this was encouraging anyone of either sex over the age of 50 years to tell their GP if they notice blood in their pee even only once. Simple and sound advice.

It is not too late to join in the Future Fit consultation and make your feelings known about which of the two options you prefer with regard to proposed changes at either Telford or Shrewsbury Hospitals. You can also make any comments and observations that you wish.

There are few figures in the consultation document which is strange and no real reference to how either option will affect provision in South Shropshire. Please read what there is available and have your say because it is your NHS.

Paul French

CLEOBURY W.I.

The August meeting was a delightful bring and share supper with Clare in Heath Close for members and visitors from Neen Savage WI. It was a pleasant evening to enjoy the garden. On Tuesday 11th

September at 7.30pm we will be back in the Market Hall learning about homeopathy and visitors are welcome.

To celebrate the dedication of the Armistice Plaque at the Market Hall at 2.30pm on the 15th September, all are invited to the Vintage Tea party which will follow, organised by the Cleobury Mortimer and Neen Savage WIs.

More information from me on [01299 270983](tel:01299270983) or on the WI Facebook page. *Judy Sant*

CATHERTON COMMON

Next month we will have a report from the Curlew project telling us how this iconic ground nesting bird has fared this year. There are still strong concerns that the numbers of dogs being exercised across the common off the lead is causing too much disturbance for any successful nesting. The risk to sheep and lambs is an additional problem.

We have put signs up earlier this year to inform everyone that dogs must be kept on a short lead between 1st March and 1st August to protect our wildlife from disturbance.

Reports suggest that this was largely ignored which, with increasing dog ownership, means even less space for our ground nesting birds. It also pushes their predators into those smaller and smaller spaces leaving nowhere to hide. A lot of dog owners feel that their dogs are no problem, they may roam through all the undergrowth sniffing and snuffling but they wouldn't harm anything. Unfortunately our birds and other wildlife don't know that and disturbance near a nest may mean it is abandoned, no chicks that year! Well behaved dogs and responsible owners are very welcome but please remember Catherton Common is a Nature Reserve with sheep and lambs roaming free as well as wildlife. On a positive note the lovely warm, dry weather has been excellent for a range of insects so we hope numbers of important butterflies and dragonflies will be increasing this year and next (insects are also an important food source for our birds!).

Clive Dean – SWT reserves officer south



The Well Being

Holistic Therapies

Cleobury Mortimer DY14 8AS

www.thewellbeing.co.uk

April Boardman

Reiki Master ITEC MFHT Dip Hyp

Do you have aches & pains, ongoing health issues or just need to relax? Help is at hand!

Deep Tissue & Remedial Massage

Reiki & Crystal Healing

Hot Stone Massage-Aromatherapy- Reflexology

Pregnancy Massage & Hypnotherapy

20% off your 1st treatment!

Tel 01299 513148 or 07881494036 or Book Online!

Sat 1 st	8.00am	Knowle Sports Club sale of household goods. Great bargains!		
	10.30/11	The Food & Ale Trail will see lots of people enjoying our lovely countryside		
Sun 2 nd	6.00	Open Mic Night at the Kings Arms, Church Street, Acoustic only!		
Mon 3 rd	11/12	Dementia Friends Group meet in Cleobury Country Centre		
Tues 4 th	2.00	Dr Mark Baldwin speak on "The Occupation of the Channel Islands" at the Doddington Friendship Club meeting at the Village Hall		
Wed 5 th	10.00am	Free NHS Hearing Aid Drop-In Clinic, Community Room, St Marys Place, Love Lane		
	10.00am	Walking for Health members step out from the Sports Centre	Alan Kimber	CM271 754
	7.30	Whist Drive at Doddington Village Hall	Sonia Pearsall	01584 890874
Thurs 6 th		BLACK WHEELIE BINS AND RECYCLE BOXES EMPTIED TODAY		
	10.30	Rock Pathfinders gather at Pembridge, Herefordshire. HR6 9EY. PAGE 7		
Fri 7 th	7.30	Kidderminster Male Voice Choir and the Ludford Duo entertain at the Parish Church. PAGE 7		
	8.00	Just Charlotte entertains at the Sports & Social Club, Love Lane		
Sat 8 th	7.30	Flicks in the Sticks is back at the Parish Hall with "Dunkirk" PAGE 43		
Sun 9 th	10.00	The Borders Classic Bike show is at Lacon Childe School, Love Lane		
Mon 10 th	6.30	Creative Writing Group meet at the Library. PAGE 11		
Wed 12 th	10.00	CoCo Coffee Morning, Market Hall, Church Street		
	6.00	Evening Sale of household goods at Knowle Sports club. PAGE 29		
	7.30	Rhythmicity Drum Workshop at Neen Savage WI in the Village Hall		
	8.00	The Royal British Legion meet in The Bell Inn, Lower Street	David Taylor	CM 270 793
Thurs 13 th		GREEN WHEELIE GARDEN WASTE BINS EMPTIED TODAY		
Sat 15 th		Coach outing to Blackpool	Mrs Gregory	01584 891464
Tues 18 th	2.00	Doddington Friendship Club hear a Summer Serenade by Trevor Wood		
Wed 19 th	10.00	Walking for Health start at the Sports Centre	Alan Kimber	CM 271 754
	7.30	Whist Drive, Doddington Village Hall	Sonia Pearsall	01584 890874
Thurs 20 th		BLACK WHEELIE BINS AND RECYCLE BOXES EMPTIED TODAY		
	10.30	Rock Pathfinders meet at Victory Hall, Neen Sollars. DY14 0AL. PAGE 7		
Fri 21 st	7.00	Quiz in aid of the Brathay Trust. £5.00 per person. PAGE 13		
	8.00	Bingo Night at Doddington Village Hall	Sonia Pearsall	01584 890874
Sun 23 rd	3.00	Harvest Festival Service at St. John's Church, Doddington, followed by Auction and Tea in the Village Hall		

QUIZ TO BACK VICKI HULME'S FUND RAISING TEN MARATHONS IN TEN DAYS.

It may sound like torture to the average couch potato, but our story on Page 13 tells how Vicki Hulme has progressed from novice to 100 marathons in just a few years of running.

And now she's aiming even higher, with plans to run ten marathons - over 260 miles - in just ten days. All to raise funds for the Brathay Trust, which works to give underprivileged

young people a better start in life and to fit in with their own community. Her friend Vicky Honeybourne is organising a quiz at the Sports and Social Club in Love Lane on Friday the 21st. £5.00 a head to enter, in teams of five or less, and it starts at 7.00.

Tickets from Vicki Hulme on 07530 856 487 or you can buy them at the Club. Young people giving their time and effort to support good causes like this is a great reflection of the strong community spirit that makes this corner of Shropshire such a good place to live.



Hobbs Building Services

EST 25Years.

A Total Plastering, Maintenance and Building Service for your home,
business and outbuildings.
Insurance work undertaken

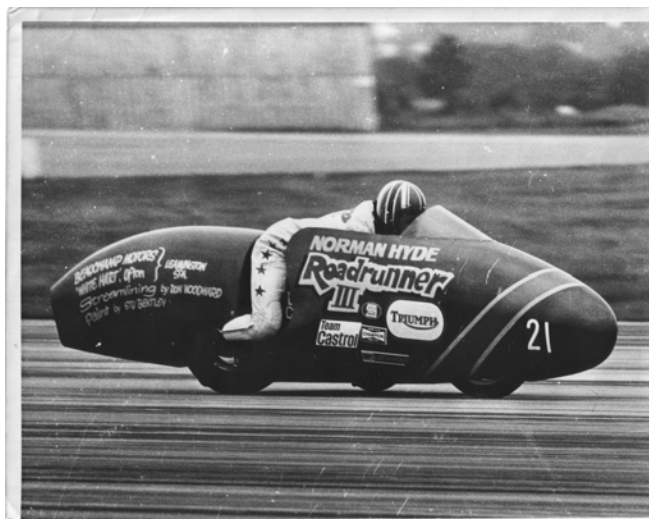
Emergency call out service for general plumbing, roofing, boarding up damaged doors and
windows. For a free quote please call;

Ian on; 07967190742

Email: hobbsbuildingservice@yahoo.co.uk Or Call/Text Kelly on; 07790085307

Mon 24 th	7.30	The Half Dead Poets Society meet in the Library. Friendly gathering – all welcome		
Tues 25 th	2.00	Cleobury Stroke Support Group meet at the Sports & Social Club		
Wed 26 th	10.00	CoCo Coffee Morning, Market Hall, Church Street		
	7.30	Clows Top Garden Club Autumn Show, Victory Hall	Marion	CM 270 475
Thurs 27 th		GREEN WHEELIE GARDEN WASTE BINS EMPTIED TODAY		
Fri 28 th	8.00	Bingo Night at Doddington Village Hall	Sonia Pearsall	01584 890874
Sat 29 th	7.30	Fundraising Fashion Show, great bargains to be had at CM Golf Club. PAGE 11		
		AND LOOKING FORWARD TO OCTOBER.....		
Tues 2 nd	2.00	Ken & Elaine Ballantyne talk about "Mosquito in the Second World War" at the Doddington Friendship Club meeting in the Village Hall		
Wed 3 rd	7.30	Whist Drive at Doddington Village Hall	Sonia Pearsall	01584 890874
Thurs 4 th		BLACK WHEELIE BINS AND RECYCLE BOXES EMPTIED TODAY		
Sat 6 th	10.00	Tenbury's Applefest is at The Burgage. More in the October Clarion		

The Borders Classic Bike Show, September 9th



We welcome a genuine British Hero as our Guest of Honour at this year's Show. In 1971 Norman Hyde climbed aboard the supercharged 750cc Triumph that he'd never ridden in this streamlined form and set a new World Sidecar Speed Record of 161.5 mph. That record wasn't beaten for 35 years, yet his bike was built from parts rejected from the

production line, with no sponsorship from the Triumph factory where he worked in the Experimental Department.

The man's ability to face a challenge hasn't changed. He will be riding around distant Cumbria on Saturday on a motorcycle industry weekend, then dining and staying overnight in Workington before climbing onto his modern Triumph and riding south to join us and talk about time in the bike business.

The Show is in the Lacon Childe School, where the doors open at 10.00 with two halls full of bikes and bike trade stalls to amaze you with their variety and fascinating stories.

There will be a Fire-Up of the noisiest bikes at about 1.00, a chance to win half a bucketful of cash in the 50/50 raffle and you can vote for your favourite machine in the Visitors' Choice ballot. Prize giving at about 3.30 and then they all head home.

The show opens at 10.00 and the price for adults is just £5.00. Top value!

Wild Meadow Boarding Kennels

Give your dog a holiday



- Guaranteed Daily Walks
- Heated & Air Conditioned
- Licensed & Insured

Call Kate & Rich on 01584 890327 or 07967 491428

Opening hours: 8am-11am & 4pm-6pm

Hopton Bank, Cleobury Mortimer, DY14 0QF



First choice for all your motoring needs



- NEW FORD CAR AND VAN SALES
- APPROVED USED CAR AND VAN SALES
- ALL MAKES SERVICING AND MOTS
- PARTS AND ACCESSORIES
- CONTRACT HIRE FOR BUSINESS
- CAR AND COMMERCIAL RENTALS
- SELF STORAGE FACILITIES
- MOTABILITY AGENTS



169-171 Newtown Road,
Malvern WR14 1PJ

01684 212361

Worcester Road,
Kidderminster DY10 1JB
01562 549836



Spring Lane South,
Malvern WR14 1AT

01684 212428



Spring Lane South,
Malvern WR14 1AT

01684 212339

brookhire.co.uk
hillsford.co.uk



Worcester Road,
Kidderminster DY10 1JB

01562 549725

hillscontracts.co.uk
hillselfstore.co.uk



Spring Lane South,
Malvern WR14 1AT

01684 210530

Worcester Road,
Kidderminster DY10 1JB
01562 549716

watch | like | tweet



HIS & HERS

Dog Grooming Parlour

All breeds and
Cross breeds professionally
Trimmed and Groomed



J. A. Guest

Tel: 07790 796 027

David Ward firewood

Do you need a dependable consistent quality
supply of Hardwood and Softwood Firewood?
Cut & Split to suit and delivered in breathable
1.2 cubic metre bags so no need to restack.

Small delivery vehicle fitted with
crane can deliver to most situations.

David is happy to discuss your requirements.

Mobile: 07866 441154

email: david@dskw.co.uk

Ever After

- Breakfast club
- After school club
- Holiday club
- "Forest schools" outings



- 15hrs education funding
- 24U funding
- Age ranges: 3 months to 11 years

Day Nursery

Cleobury Mortimer

Please contact us on 01299 272 777

Or Call in to see us anytime.

Friendly, Caring Environment for the Community

Alan Smith Aerials

Digital TV Installations.

Freeview aerials fitted and distributed around the house.

Freesat box, dish, and cable supplied and fitted. One off payment, **No contract or subscription required.**

Extra points, Repairs, New fits, Set ups, Multi room.

All work is carried out by a **Local**, fully qualified and insured installer.

01299 270007 or 07970 675728



Domestic oil-fired boiler breakdown & maintenance services.

27 years' field-service experience with leading UK boiler manufacturer Worcester Bosch.

Donovan Taylor

Tel: 01299 828670 or 07807 837040

donovan.taylor@sky.com

www.greenstar-boiler-repairs.com

Caring about your environment and providing an honest, professional & reliable service you can trust



Jet Washing Services

We clean and restore outdoor surfaces at an affordable price.

- Decking
- Patios
- Brickwork
- Driveways
- Fences
- Outdoor furniture

For a free quote call Luke on 07443 039608, or email shropshiredirtblasters@gmail.com

FALCO HEATING

The Solid Fuel Specialists

GARY HARDING - HETAS registered

Old Hall Farm

Clows Top, Worcs. DY14 9HE

T: 01299 832030

M: 07896 685 947

FalcoHeating@gmail.com

www.FalcoHeating.com

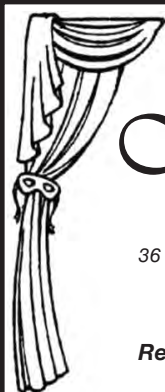


A.B. Plastering
Plus Traditional Lime Plastering

Adrian Booton
PLASTERER

4 Severne Green, Bayton
Nr Kidderminster, DY14 9LL

Tel: **01299 832 838**
Mobile: **07974 582 524**



*Soft furnishing and
Interior Design Services*

Masquerade
Fabrics Limited

01299 271 680

36 High Street Cleobury Mortimer near Kidderminster
Worcestershire DY14 8DQ

*Retailers for Sanderson, Harlequin, Monkwell
Crowson and many more...*

Comprehensive design, measuring and fitting service.



Natalie Taylor Dip CFHP MPS Pract.

Specialist Foot Health Practitioner

Specialising in:-

- In-growing toenails
- Fungal infections
- Nail trimming
- Verrucae
- Calluses
- Corns

All from the comfort of your own home.

If you would like to make an appointment,
please call on **07779 113982** or **01584 890112**



M D Taylor

Electrician/Plumber

No job too small or too large

NICEIC Registered

Call David on **01299 832903**
or **07973 848618**

Carolyn & Keith Balmer support a number of people who are involved in charitable activities. So we are always looking for soft toys and teddies for the "Teddy Trust". www.teddytrust.org.uk .
Also if possible new, or very good quality, pens, pencils, note books, school bits and pieces, anything that would be useful for deprived children.

Phone 07976 307 889

More Clarion Smalls



Cleo bury Chiropractic
Janet Manley

Qualified Chiropractist
MSSCh. MBChA
BSYA (reflex) REIKI Master

H.C.P.C Number CH22527

Tele:- 01299-272841
Mob:- 07805-268439
Email: janetpmanley@yahoo.co.uk

2, Tenbury Road,
Cleo bury Mortimer,
Kidderminster,
Worcs.
DY14 8RB

D Painter - Painting and Decorating
Your local friendly Painter and Decorator.
Ex British Forces professional,
hard working and reliable.
Free quotes, reasonable rates,
no job too small.
Please call Darrell:
01299 271838 or
07854 770 604



Terence Montague

Interior and Exterior
Painter and Decorator

Stottesdon
01746 718 742
07787 124 304

Washing Machine
Repairs and Sales
JULIAN BREAKWELL
Telephone 07791 633 746
Repairs to all makes, including
Bosch, Hoover, Zanussi and
Hotpoint
NO CALL OUT CHARGE
FIXED LABOUR COST

S. L. CARTER
PROFESSIONAL PAINTER AND
DECORATOR

PLASTERING, TILING, COVING AND
GLAZING

CLEO BURY MORTIMER
TEL: 01299 272868
MOBILE: 07815 483 029

KNOWLE SPORTS SALES
Tenbury Road, Clee Hill.
8.00 to 11.00am
The First Saturday of
Every Month

STILL WANTED: Good clean donations.
Collections: 01584 891249
Enquiries: 01584 890644

Seasoned Oak Logs For Sale
Free Local Delivery
Also Mixed and Softwood Available
Tel: 07976 895 267
01584 890 795
K Phillips & Son Groundwork
E: kphillipsandson@yahoo.co.uk



Piano tutor
Francis Engleheart

School-aged or adult
students, beginner or
advanced. Based in Kinlet,
but I can come to you.
Some day and after-school
spaces available.

07710 288526 • fengleheart@hotmail.com



At last!. The Traffic Commissioners verdict on Diamond was finally published on 17 August. Was it worth the wait?. Er... no. To sum up, the company was fined £9075 (£33 per vehicle) which is far less than they were hit with the first time they were dragged before such an Enquiry and this is their third appearance. No action is to be taken against the Directors personally and there will be no consequences on their reputation or fitness to operate. Diamond have apparently said that they are considering the decision and reserve the right to appeal against the fine, probably whilst dancing with delight and cracking open the bubbly...

The Commissioner said that Diamond customers had been 'poorly treated' (tell us something we don't know). He also said that the fine would be used to compensate passengers for their inconvenience so perhaps Shropshire Council could invoice Diamond for the wrongly levied £1 charge which must run into thousands by now although this is a vanishingly small prospect. There was no indication as to how such a system might work but it could also be difficult to work out a fair system as how would you prove who paid what and there could be a claim of 'unjust enrichment' in the unlikely event that individuals were given more than they had

paid. He added that the Driving and Standards Agency would continue to monitor Diamond's activities.

The 292 service still seems to be performing well, subject to a few delays. There was a problem last week which caused late running as there were delays in Bewdley but due to the tight time table this is always a possibility. However, most of the users I have spoken to speak well of the service and compare it very favourably with the Diamond offering.

Passenger figures for July were 3756 compared with 4196 in June although much of the reduction is due to School and family holidays which may well affect August as well. The route review is under way and I am told that tenders from interested parties were requested by 17th August with a decision expected by the end of the month so we shall see what happens. It appears that Shropshire Council are aware that the timetable is tight and may well look to ease this a little – R&B say that an extra 10 minutes would make life much easier. All being well, there will be more to say on this next month.

Some friends have recently holidayed in Romania and used the bus service which they said was on time and didn't break down. Clearly the long arm of Diamond hasn't reached that far yet...

The Clarion is on the Worldwide Web

**From the fourth day of the month,
every word including the
advertisements.**

www.cleoburyclarion.co.uk


THE ROYAL FOUNTAIN INN
 FAMILY FRIENDLY BEER GARDEN, GREAT ALES & GINS
RESTAURANT
 OPENING SEPTEMBER 2018

"COINS" IN THE FOUNTAIN...
...WISH UPON A STARTER

BOOKINGS AND ENQUIRIES
 CALL "COINS" RESTAURANT
 01299 272720 07931475267
 Follow us on Facebook "The Royal Fountain Inn"
the.royal.fountain.inn@gmail.com

CLEOBURY SEAFOOD & FREEZER CENTRE

6 Newhouse Farm - Tenbury Road - Cleobury Mortimer

01299 271345

Ready Meals

*We stock a wide range of ready meals, from the ordinary to the extra ordinary !
Plus a range of Vegetarian, Gluten Free and Vegan meals.*

Mr Dave's

*Meat, Chicken, Prawn and Vegetarian Balti, Madras Curry
Mr Dave's extra large naan, plain and garlic & coriander.*

Fish

*Cod, Haddock, Plaice fillets, Sea bass, Lemon sole, Cod Loins, Smoked Haddock.
Battered & breaded fish fillets. Young's Jumbo Cod Fish Fingers. (Very Popular)*

Seafood

*Raw king Prawns, Squid, , whitebait, cooked tiger prawns, scallops, seafood cocktail.
Hot & Spicy Prawns, Breaded Cod & Plaice Goujons*

New Fish Cakes *Thai Style Cod & Prawn, Smoked Haddock, Mozzarella & Spring Onion,
Sea Bass, Cod, Lime & Ginger.*

Fruit and Vegetables

Potato Products

Bannister Jacket Potatoes, Oven chips, Sweet Potato Fries Twister Fries, Hash Browns, Spicy Wedges

Chicken Products

Southern Fried Breaded Chicken Steaks, Breaded Chicken Goujons, Chicken Nuggets, Chicken Bites.

Gateaux for all occasions

BENNETTS ICE CREAM

Opening Times 9am to 4.30pm Mon to Friday. Saturday 9am to 12

Visit our web site www.cleoburyfreezercentre.co.uk



"We tried artificial flies. We tried lures.
We tried live bait. Nothing works ...
It's like they're psychic!"



"Blood-curdling screams, Hayos, will
do nothing to help us catch a fish."



This could be a very good year for mushrooms and toadstools. I say this because a period of heavy rain after dry weather usually stimulates the growth of the variously-shaped and coloured fruiting bodies which we see on the forest floor and out in the meadows. The greater part of the organism consists of a network of fungal threads called hyphae growing through the soil, dead wood and leaves (and often visible if you turn over a rotting log or clump of dead leaves).

Now that I've touched on fungal nomenclature I can reveal that the network is called mycelium and that a specialist in the study of fungi is a mycologist. Mycologists have recently made some astounding discoveries about fungi and their importance to the ecology of many other species. The most startling is that by far the largest living organism in the world is an example of the fungus *Armillaria solidipes* (a species of honey fungus) which extends for about 4 square miles in the Malheur National Forest of Oregon. DNA checks have proved that this is all one organism and it is estimated to be from 2000 to 8000 years old. Unfortunately it is a killer of coniferous trees, travelling through the soil by means of strong black 'bootstraps' by which it infects other trees' own root systems. I have found these honey fungus bootstraps in parts of my garden, and have to blame myself for introducing them via picturesque logs and stumps.

Fortunately the relationships between trees and fungi are usually more benign and beneficial. Fungi cannot photosynthesise, absorbing nutrients and water directly from their surroundings and most notably from dead matter. However, many have evolved to form a close association with trees where they benefit from the sugars produced by the tree and the trade-off for the tree is a more effective system for gathering minerals from the soil and filtering out heavy metals. This co-operation of the fungal mycelium with tree roots results in an extensive 'root' system which can link one tree with another over large areas.

Particular fungi may be fairly specific in their choice of host tree. The Oak Milkcap is one of about 50 species of milkcap found in the Wyre Forest, the 'milk' which gives it its name oozing from the damaged gills. It is, I believe, exclusively associated with oak trees, whereas, for instance, the Fiery Milkcap grows under Hazel, Fly Agaric under birch and Slippery Jack under Scots Pine.

Local gourmets may be rather sad to learn that edible truffles cannot grow in the Wyre Forest's acidic soils, so plans to train up the dog or pig as a truffle-hunter would get us nowhere. I won't get into the tricky subject of whether or not different fungi are edible: after an allergic reaction to eating a Common Puffball I prefer to steer clear of them all.

Linda Iles



We control:

Insects Rodents
Mammals Birds
Electronic fly killers
supplied & fitted

Mobile: 07890 048 362

WYRE FOREST PEST CONTROL AND WILDLIFE MANAGEMENT



All work guaranteed
No call out charge
Discount for O.A.P's
Free survey and quotation

Office: 01562 747 210

www.wyreforestpestcontrol.co.uk

Number Nineteen
No.19 Denture Repairs
Dental Laboratory

SPEEDY, QUALITY DENTURE REPAIRS
Cracked/broken dentures repaired the same day.
A 1 HOUR service is available for when time is of the essence, just call to make an appointment.

19 Lower Street, Cleobury Mortimer, DY14 8AL
Email: nevilleweaver@googlemail.com Phone: 07973856733
All work undertaken by a GDC registered technician

DOMESTIC GODDESS HOME SERVICES

*I will tackle any job with care and pride!
I specialise in general household chores and de-cluttering of homes.*

I am very reliable.

CRB checked - References available

Contact Julia anytime on

07867646574/01299 832297

t. 01299 823 986
m. 07467 946 087
www.rewyreelectrical.co.uk
f @rewyreelec

ReWYRE electrical

- EMERGENCY CALL OUT SERVICE
- ALL ELECTRICAL SERVICES OFFERED
- FREE NO OBLIGATION QUOTE

Domestic & Commercial Electrical Services
We are fully accredited and supported by:  

Electrician

Indoor/Outdoor Lighting Specialist

Repairs and Installations

No Job Too Small, Reasonable Rates

For an Honest and Friendly Service Please Call Mathew
Part P Approved
Tel: 01584 711553
Mob: 07974 638045

M D Taylor

Kitchens/Bathrooms

Fully Fitted

Including all electrical,
plumbing and tiling.

Call David on 01299 832903

or 07973 848618

E.PURSLOW & SON LTD

Stone, Gravel, Cement Supplies

Approved Coal Merchant

Calor Gas Stockists

Tarmacadam Specialists

Car Parks and Driveways

Constructed.

TEL: 01299 270314

fairway

Accountants & Business Advisers

Proactive professional team available 7 days a week. Highly competitive fees.

Contact: Simon Hector 07896 439594 or Simon Connolly 07973 360456

Offices in Cleobury Mortimer & Stourport on Severn

Main Tel: 01299 822283 Email: team@fairway-net.co.uk

www.fairway-net.co.uk

CLOWS TOP GARDENING CLUB

September is a time to be gathering in the harvest and autumn colours begin to appear, with a distinct chill in the morning air. The effects of the shortening days are now quite noticeable. So it's time to move frost-tender plants indoors. Summer seems to be barely over before thoughts of next spring begin. Buy spring bulbs for the garden early to get the best choice of varieties.

Many jobs still to be done. Deadhead roses, cut back perennials and fork over your beds and borders for one good round of thorough weeding. This should keep them mostly tidy until the following spring. Clean out cold frames and greenhouses ready for autumn use.

To brighten the patio, plant up a winter container with cyclamen, pansies or bellis for colour.

The June meeting, earlier this year, was the club's Rose and Sweet Pea Show. Despite the dry weather, some good specimens were entered. Many thanks to Marion for judging the show. The results were 1st and Best Exhibit Bob Marriott, 2nd Madge Edwards and 3rd Chris Cowdell.

Our next meeting will be on Wednesday September 26th, when the talk will be entitled 'Wyre Forest'. It will also be the clubs Autumn Show.

Pauline Bowden

'FLICKS' IS BACK

It's probably second only to the Cleobury Concert Brass Christmas Concert in popularity at the Parish Hall, the town's top value venue. And this month it's back.

We're talking about 'Flicks In The Sticks', that excellent value for money event that brings people together and entertains them with a range of current movies. And doesn't sell big tubs of popcorn for your neighbours to eat noisily.

Saturday the 15th sees a real hit on offer with 'Dunkirk'. All yours for £4.00 on the door. That's a really good deal.

THE SWIFT REPORT

Our swifts came late, in few numbers at first and left us for Africa earlier than usual. However there was plenty of food in the warm summer air, and final numbers of breeding pairs were slightly up on last year at 15. Two new nest sites were recorded on the Market Hall.

It seems that swallow numbers are badly down but house

martin numbers are stable. Let's hope all three species have a good nine months in Africa before returning to us in number in 2019.

Kit Smith

THANK YOU

To all our family, friends and neighbours for the cards, presents and good wishes for our 60th wedding anniversary. Also for all the support and help during my stay in hospital.

Once again, many thanks.

Valerie and Brian Carter

THE SILENT SOLDIERS

Readers will have seen the two 'Silent Soldiers' which have been installed by the Town Council on the verges at each end of the town. The Legion has a third 'Silent Soldier' which first went on display at the Community Day on June 23, and will be brought to other Legion events in the future.

Thinking that he deserves to be seen around the town more widely, the Legion will gladly lend him to any local business or association who would like to display him at a particular event or on a particular occasion. Please contact Mark Baldwin on CM 270110 or email mbaldwin2@btconnect.com to make suitable arrangements.



Sue Savage Driving School

- 29 years experience
- specialising in nervous & apprehensive pupils
- high first time pass rate
- Rural areas covered

Contact: 01584890334 or 07979745126

Cleobury Mortimer Golf Club

At Cleobury Mortimer Golf Club we believe that a really enjoyable golf day takes more than just a great golf course. We make sure that your whole experience, from the friendly welcome in the golf shop to your drinks and meal in our relaxed clubhouse, is all part of a day you'll remember.

Monday Madness. £15 For All Day Golf

36 Thursdays. £20 For Up To 36 Holes

Membership. 7 day, 5 day, Intermediate, Associate, Junior & Social

Lessons. Lessons available with David Pain and Amy Millward.



Just some of the many benefits of joining Cleobury Mortimer Golf Club

- Access to full length 27- hole golf course
- Opportunity to achieve and maintain a handicap
- Family, Friendly Environment
- Playing opportunities at all times of the week
- A range of competitive opportunities
- Open dawn to dusk 363 days a year.

We look forward to meeting you at Shropshire's friendliest golf club.



☎ 01299 271 112 (ext 1)

✉ pro@cleoburygolfclub.com

🌐 www.cleoburygolfclub.com

freshen up your living space...



- all types of re-upholstery
- traditional and modern
- bespoke upholstery
- cars, trucks and tractors
- caravans and boats
- pubs, clubs and hotels
- professional carpet & upholstery cleaning.



WE GLEAM

PROFESSIONAL RE-UPHOLSTERERS
& CARPET CLEANERS

We don't just clean it...we gleam it!

07961 712 683

see pics on Facebook

website www.wegleam.co.uk

email wegleam4u@gmail.com



REGISTERED LICENCED FOOD PREMISES FOR HIRE OR TO RENT

Situated in Hopton Wafers.

Long or Short-Term Hire considered.

Ideal for Caterers and Cookery Demonstrations etc.



Well equipped Kitchen, Preparation Space, Washing and Storage Areas.
Licensed Function Room if Required.

For Enquiries call 07711 731 896 and speak to Chris
or email info@hoptoncourt.co.uk

Registered Osteopath.

Experienced with a wide range of injuries & medical conditions including :-



- General aches and pains
- Joint pains
- Arthritic and rheumatic pain
- General back and neck ache
- Headaches arising from the neck
- Circulatory problems
- Lumbago
- Sciatica
- Neuralgia
- Fibromyalgia
- Sports injuries
- Muscle tension and imbalances

James works alongside Sue Brown at Cleobury Chiropractic in the High Street.
If you would like an early-morning or evening appointment then please call James on: 07506 287191.



Michael Coombes Roofing & Building Maintenance.

Complete Re-roofing, Roof repairs, Pointing & Chimney repairs.
Slabbing & Brick work
Wall & Floor Tiling
Painting & Decorating

Over 20 Years experience in the Cleobury area.

Call Michael on 07854 047413



Small Animal Boarding

Pet hotel for Rabbits, Guinea Pigs, Hamsters, Chickens and other small Animals.

- Spacious comfortable accommodation
- Initial inspection welcomed
- Every need catered for
- Competitive rates

www.noahsarkboarding.wix.com/noahsark

Call; 01584 890111 or 07886 982691 email: noahsarkboarding@btinternet.com

THE WW1 GROUP

When the group was formed the members wished to mark the conflict in tangible ways, culminating in 2018 with a permanent reminder of those from our community who served. The plaque will be fitted on September 13th. and will be dedicated on the 15th at 2.30 pm.

The dedication is a public event; do please come if you are able.

The plaque is the same design as the one erected to honour those who served in the Boer War 1889-1902. Inscribed to honour those who served in the Great War, not just those who died. Being present at the dedication means that you will be sharing in a little piece of history.

The Royal British Legion are funding a small plaque inside the Hall to record the names of those involved in enabling the plaque to become a reality. This has been a homegrown project and the group would like as many people as possible to come and see the final piece of the jigsaw slip into place.

At 3.00 on the 15th there is a Vintage Tea Party in the Market Hall organised by Cleobury Mortimer WI and Neen Savage WI. What could be better?

We look forward to seeing you there.

Paul French

INTELLISTARS AT THE MARKET HALL

This is a new pre-school group, meeting in the Market Hall. Their 'taster session' was

on August 16th and organiser Amy Bottoms reports a "lovely group of children" enjoying a visit to the jungle, plus lots of games around the room encouraging recognition of colours, numbers, shapes and patterns.

The result was children signed up for the term starting on September 6th and looking to become Intellistars. More information from Amy at 07876 400 905 or shropshire@intellistars.co.uk

THE FOOTPATH ASSOCIATION

We hope that many readers enjoyed the Food and Ale Trail. We would love to hear from you via the CMFA website or Facebook page including any photos. Our next outing will be the Parish Walk on Sunday October 7th.

A plea for help about brambles: If you walk our footpaths, have you noticed paths which were quite wide gradually getting narrower with bramble encroaching on either side? Usually in woodland but also sometimes elsewhere.

It is a sad fact that without intervention these paths are going to be lost. Bramble fronds can be very long, they stretch across paths and in the winter months when the ground is damp they root. Walkers treading these fronds into the ground as they pass make the problem worse. Yards of ground can be lost very quickly. Unlike bracken and nettles it becomes a permanent blockage.

This is happening even in quite well walked areas, such

as the Wyre Forest, so in lesser walked areas such as ours it is a real threat to our footpath network

It is too widespread for volunteer groups such as CMFA to beat on our own. It needs all walkers to be aware of the problem and to play a part in preventing it happening. So please carry a pair of secateurs and snip at those long fronds as you pass through. Don't trample on the fronds if they are laying across the path, better to sweep them out the way with a walking stick or your boot.

The fruiting spurs are not so dangerous, it is the non-fruiting ones seeking new territory which are. Next time you pass some bramble have a good look and you will better understand the problem.

Graham Simpson

A CLEOBURY CAKE?

Stephanie Morrison never seems to be doing nothing, she's such a new ideas machine.

Her current experiment is the development of a Cleobury Cake. As she reasons: "If Eccles and Chorley can have their own cakes, why not Cleobury?"

She's working on the sultana-filled Eccles cake as a basis, but giving it a slightly bent triangular profile to pick up our famous twisted steeple as a keynote. And the fruit filling will have a different flavour with a local touch. Possibly a Hobson's beer in the mix?

We'll let you know how the idea tastes as soon as we can. Can't wait to find out.....



KINLET C OF E PRIMARY SCHOOL

Love to Learn – Learn to Love



- Outdoor play areas
- Small family atmosphere
- Kind – Inspire – Nurturing – Learning – Eco-friendly -Teamwork

www.kinlet.shropshire.sch.uk

admin@kinlet.shropshire.sch.uk

Telephone: 01299 841210

Tel: 01746 861612

Amanda Horton Mobile Computer Services

Email: mandhorton@gmail.com

Text: 0796 461 4185

OVERWHELMED BY TECHNOLOGY AND DON'T KNOW WHERE TO START?



- Email
- Social Media
- Researching family history
- Online Shopping

I offer computer lessons and services in the comfort of your home and can walk you through at a pace that suits you

Reasonable hourly rates

Lower St Garage

7 Lower St, Cleobury Mortimer. DY14 8AA



- M.O.Ts on cars, motor bikes & small commercial vehicles
- Tyres, Tyre fitting,
- Puncture repair and Tracking.
- Diagnostics, Air conditioning
- Welding.
- Service and Repairs to most vehicles.
- Delivery and Collection Service Available

Contact The Team at Lower St Garage on: 01299 270208



Twin + Earth Electrical

**Your local electrician
For all your electrical needs**

- House rewires
- Existing circuit upgrades
- New kitchen circuits
- Fuse board upgrades



No job too small, Call Paul today on

07387 701414

01299 272732

kim
stanley
**health &
Beauty**

01299 271800

www.kimstanley.co.uk

30 HIGH STREET
CLEOBURY MORTIMER
DY14 8DQ

Waxing

Nail Care

Skin Care

Electrolysis

...and more

*Enquire instore for our full
Range of relaxing Beauty
Treatments.*

Ultra Sound

Acupuncture

Physiotherapy

Emmett Practitioner

Jill
Sharp
Physio

Chartered Physiotherapist.
BSc(Hons), MCSP, SRP

Physio: 07905 766729



The Talbot Inn, Cleobury Mortimer



The Talbot has a great range of offers for you to enjoy, starting with our new menu offering **2 seniors meals from £12**. We have launched our new menu with classic pub favourites, great offers and week night promotions. We have cask ales from **£2.50** a pint and specials for sporting events. Try one of our sizzling dishes such as steak or chicken fajita

29 High Street, Cleobury Mortimer, DY14 8DQ • Tel: 01299 270331 • talbotinn.southcoastinns.co.uk

NOW OPEN!

THE LARCH BARN

cafe & plant centre



Cleobury Mortimer

www.thelarchbarn.co.uk



As dawn broke on the 27th February 1916 Private James Crozier aged 18 years was carried in a drunken state from a holding cell to the grounds of a villa in Northern France. Incapable of standing he was tied upright to a post and blindfolded.

Go back in time and we find James at a recruiting office in Belfast in September 1914 accompanied by his mother Elizabeth who tried to dissuade him from signing up. The recruiting officer ... by strange coincidence they shared a surname ... Frank Crozier assured Elizabeth that he would look out for James.

Through the winter of 1916 James fought on the Somme with the Royal Irish Rifles but early in February 1916 failed to present for sentry duty. A week later he was found wandering behind the front line apparently in a daze. Examined by a doctor, he was declared fit in mind and body and court martialled on the 14th February 1916 for desertion. James defended himself saying that when going absent he had been wracked by pain but was sentenced to death.

Frank Crozier who had sought to reassure Elizabeth at the recruiting office was now at the front and was asked to supply a recommendation as to whether the sentence should be commuted but decided that it should not. He also decided that during the night before the death sentence was carried out James should be plied with drink to dull his sensibilities.

The firing squad shot wide, which was not unusual, and although wounded James was still alive. An officer despatched him with a single shot to the head.

Brigadier-General Frank Percy Crozier, as he subsequently became, recorded in his memoirs

"There are hooks on the post, we always do things properly in the Rifles. He is hooked on like dead meat his eyes are bandaged – not that that really matters, for he is already dead"

After the fatal shot was delivered he noted: "Life is now extinct...We march back to breakfast while men of a certain company pay the last tribute at the graveside of an unfortunate comrade. This is war"

There were nine offences punishable by death in 1914 ranging from desertion to assisting the enemy. By 1918 desertion accounted for 245 out of a total of 304 executions, the majority of which were committed while in the trenches on the Western Front.

A further 18 men were executed while waiting to leave the army after the signing of the Armistice.

Many accounts of executions exist which are much more graphic than those of death in combat. They do not make easy reading so have not been included. We know much more now about the mental and psychological effects of war on those who serve, so comparisons between then and now may not be fair.

What perhaps is most important is to put these deaths into perspective for us in 2018. In 1989 a history of these executions Shot at Dawn was published which listed all deaths and where possible the events leading up to them.

A sustained campaign by relatives of some men led to the granting of a collective pardon in 2006 and a Shot at Dawn memorial in their honour stands in the National Arboretum in Staffordshire. Historians very often have different opinions and the book Blindfold and Alone is very critical of those who seek to make excuses for some of those punished.

I think we should try to accept that all of those executed signed up and did their best, they were all loved mourned and remembered by those who knew them and lost them. I selected James but could have picked any one of 321 others.

Let us be grateful to James and all of them for their service on our behalf.

The Clarion is on the Worldwide Web
From the 4th of every month, all 64 pages including the adverts.
www.cleoburyclarion.co.uk

Competitive & reliable **Grab Lorry Hire for Muck Away Services**

from

**Saxonby
PLANT**

PLUS

**Saxonby
GROUNDWORKS**

for...

- Adoptable standard Roads & Sewers
- Residential, Commercial, Agricultural, Industrial & Domestic
- Footpaths
- Driveways
- Road building
- Drainage ditches
- Preparation for installing underground utilities
- And more!

...Both part of the Saxonby Group

Tel: 01743 233 539

www.saxonby.com



The Lamp Restaurant

15a High Street, Cleobury Mortimer, Shropshire, DY14 8DG

01299 272785 or 01299 271315

Fully Licenced and Air Conditioned

Serving Bangladeshi & Indian Cuisine



The Lamp Restaurant winner of Currylife award chef of the Year

Open 7 days a week from 6.00pm until 11.00pm

The Lamp's cuisine, inspired by Sylhet, the second city of Bangladesh, offers a wide variety of choice along with established favourite dishes and a selection of Chef's Specials.

The wide variety of starters and accompaniments chosen by our chef to complement your main course.

Takeaway service offers free delivery up to 3 miles for orders over £15.00.

Find us on Facebook: Lamp Inn Cleobury Mortimer

HAPPENINGS ON THE HILL

Celia Gibb reports on events at the lively Doddington Parish Church.

Our Bon Marché Fashion Show had a capacity audience keen to see the latest autumn styles. The event was compèred by three knowledgeable ladies from the shop with four rather nervous first-time models. Warming to their task, the models quickly got into the spirit of the catwalk while the outfits were described. The audience was very encouraging and appreciative of the clothes. With a lucky brochure winner, lucky ticket, raffle and cake stall there was much to enjoy and take away from the evening, and the road to Kidderminster will have been busier in the following days with trips to use the generous vouchers at the store. Thanks to everyone who made this such a fun evening.

We have fitted an extra Jumble Sale into our programme of events – 2.30pm on September 8th in the Village Hall; and our Harvest Celebration is on Sunday the 23rd at 3.00: Do join us as we give thanks for “all good gifts around us”. Donations of produce are welcomed – we will carry them along to the Village Hall after the service to auction them off in aid of charity and follow that with a bring and share tea; it's always a lovely afternoon. A reminder to put 6.00pm on October 20th in your diary for our Auction of Promises and to look out for our catalogue. If you would like to offer a lot (an item, a voucher or a promise), please contact me. Celia Gibb 01584 318036

PLASTIC: NOT SO FANTASTIC

Quick tip for September to further reduce your plastic waste: Avoid using a plastic bin liner for your black bin waste. As all your food waste can go into your green bin; paper, plastic, glass, cardboard, and cans in the recycling bins, any waste that is left should be pretty dry so your household bin may not need lining with a plastic bin liner. A quick and easy way to reduce the plastic waste going into your black wheelie bin.

Updates on from last month's tip to refill your water bottle:

In Cleobury Mortimer you can refill your water bottle at Stephanie's tea shop Tuesday to Sunday and the Market Hall when it is open.

This advice comes from MoneySavingExpert.com: Water UK is working alongside the Refill campaign to make it as easy as possible to reuse water bottles and has already mapped 1,600 refilling stations on its app, to create a national network of places to get free tap water at high street shops, coffee shops, businesses and local authorities. You won't need to be a customer, or feel obliged to buy anything if you pop in and refill, and Water UK has confirmed the project is being funded by the water companies. To find out where to refill, download the free app "Refill"

If you are a local hostelry, you can add your premises to the app as a refill station. Costa Coffee and Premier Inns are participating so it's getting easier to refill wherever you are.

Stephanie is also working hard to reduce other plastic waste coming from her premises. She gives customers their tea shop takeaways in PAPER bags and is trialling and further researching biodegradable and compostable hot drinks cups to give to customers who don't have their own reusable coffee cup. Great that one of our Cleobury businesses is working so hard to reduce plastic consumption.

We would love to get your ideas and feedback on our Plastic: Not So Fantastic Tips and will promote other tips you send us. You can contact us by email at : Neil.tysall@cleobury.org.uk

Louise Francis

INDOOR TABLE TOP SALE

This was too late for our Social Calendar pages, but well worth knowing about. It's an Indoor Table Top Sale on September 15th, up at the Pioneer Centre. You can book a table for a modest £10, by emailing pioneercentre@pioneercentre.org.uk by the 5th. You'll find food and drink available, entry and car parking for the public is free and there will be climbing, abseiling, archery and more to attract people to the event. It will run from 10.00 until 2.00.

SILLY BIT

A couple in Bakersfield, California, were heaving trouble with their new motor boat. It was very sluggish and hard to manoeuvre, so they stopped at a marina to ask for help.

After a thorough check that the engine was fine, one of the marina mechanics jumped in the water to check underneath. He came back choking with laughter; under the boat, still strapped securely in place, was the trailer.



REVIVE BATHROOMS

COMPLETE BATHROOM INSTALLATION SERVICE

07971 361901 or 01299 832484

**Complete Bathroom Installations
Bathroom Refurbishment or Repairs
Wet Rooms
Professional Wall and Floor Tiling**



For a quality and guaranteed service, call Stuart for a free quote
Highly Recommended / References available - see my reviews on www.freeindex.co.uk

FOR THE BATHROOM YOU DESERVE!

BoomeranG

of Cleobury Mortimer
private hire travel

- Friendly, reliable service
- Local & long distances
- Fully council licensed (up to 12 passengers)
- Airport transfers
- Courier service
- All occasions catered for

Tel: 01299 271257, Mob: 07411 142755, Email: stuart.boomerang@yahoo.co.uk



Elite Sweeps

Professional Chimney Sweep

& HETAS Stove Installer

- ✓ Prompt, reliable & friendly service.
- ✓ Cowls and Chimney Pots fitted.
- ✓ Fully qualified and fully insured.
- ✓ Guild certificates issued after every sweep.
- ✓ HETAS Approved Installer.



Call Eddie Tel. 01299 382222 / 07895 612915

www.elitesweeps.co.uk



Registered
Technician

30546

JOHN VAIL

Plumbing, heating and bathrooms
Installation of boilers, cookers and gas fires
In homes, park homes and caravans
Boiler servicing and landlords' certificates

GAS

LPG

OIL

Gas Safe and OFTEC registered

07971 624804

01584 890946

johnvail123@btinternet.com



536724

THE CHORLEY SHOW

A misty start to the day, but by opening time the sun was breaking through and it promised to be a really good day. The parking field was half full and there was a steady stream of cars coming in, with a warm welcome waiting at the gate.

A quick lap to establish where everything was before mixing and chatting. Out in the main arena the falconry display included Riot, a handsome peregrine falcon who swooped and dived for a bait before being called to rest awhile and be given something to build his energy back up.



There seemed to be a whole range of entertainments at the centre of the show, with children invited to try a little circus style juggling. There was a good commentary to make the show flow and keep people informed. We didn't get the name of the man on the mike, but he did a great job.

The British Ferret Association had a friendly stand, with ferrets on their best behaviour and responding to curious children stroking and eventually cuddling them. The ferret's reputation as a hunter

had parents concerned, but the man in charge assured them that they were safer than rabbits. "Rabbits will bite" he explained, and having seen a rescue rabbit bite my poor old cocker spaniel on the nose, I can confirm that.



This little girl's delight at holding a ferret summed up the day. Lots of fun and smiles.

The Dog Show that's part of the event had long queues of hopeful owners and patient pets awaiting their turn in the ring. The two judges from Severn Edge Vets were certainly kept busy, but a simple commentary to explain to the onlooker what was happening would have been a help.



Back at the main ring there was a selection of races, with the three-legged a great laugh.

Each pair of runners was issued with a rope to tie legs together and there was a definite need for some of them to get in a little practise before they lined up to compete. No such luck, they came under starter's orders and were let loose. Great fun, lots of laughter.



Dominating a modest collection of classic cars was this 1948 Austin ambulance, one of only two known survivors and part of Chris Tallents' collection. He and a band of helpers have done a very fine restoration of this ageing example of Birmingham automotive craft, which was presented to the Bracknell division of the ambulance service by the 7th Marquis of Downshire.

It has quite a history, including an appearance in the Quatermass Experiment movie, when it was crewed by the regular team from Bracknell and not film extras, which saved a little money. Its 2.2 litre petrol engine allows a comfortable 45mph cruising speed, a huge difference from what we expect today.

There was more to see and hear, but the editor's busy day meant he had to leave early. Must find more time next year.

Summer/Winter Sun Holidays
Cruises
Ski Holidays
Weddings and Honeymoons
City Breaks
Tailor-made Holidays
Flight Only
Theatre Trips
Heritage Day Trips

Tranquillity Travel

INDEPENDENT TRAVEL CONSULTANTS
EST 2003

Come in, WE'RE
OPEN



01299 400130

www.tranquillity-travel.co.uk
within the Mercure Hotel, Bewdley (free parking)
Find us on Facebook @TranquillityTravel

Fully ABTA/ATOL Bonded
First Class service from booking to return
24 hour emergency phone number
Experienced, well trained staff

Hands on Printing

**Print your own photographs on our SNAP LAB PRINTER
or we can do it for you.**

All Digital formats disc- cards or phones

Print sizes 6 x 4 5 x 7 8 x 6

Enlargements from 10 x 8 to 36 x 24 inches

Canvas prints from 16x12 to 20 x 30 inches

Prints from 35mm slides - Celebration Banners - Paper or Plastic

Colour Business Card s - Flyers - Raffle Tickets B-W or Colour copying

Most video tapes transferred to D.V.D.

Audio tapes and records to C.D.

Cine films to D.V.D.

Pass ports - Bus pass - Driving licence photos etc.

A selection of Photo Frames now available

43, High street, Cleobury Mortimer. DY14 8DQ Tele:- 01299-272757

Paul Harding



Tree Services

- Tree surgery and felling
 - Woodland thinning & maintenance
 - Hedge trimming & grass cutting
 - Supplier of hardwood logs, kindling and garden bark
 - NPTC certified fully insured. Domestic and commercial work undertaken.
- Tel 01584 890 993 Mob 07970 878 224**

SMALL JOB ADVERT

Wanted. Cleobury Mortimer person required. Someone for regular light domestic work, one hour weekly.

Telephone CM 270758.

DELORA'S RETREAT

An unusual name and an unusual business that's taken over the Talbot Square shop that was Edna Maes' salon.



Jemma Stone is the lady in charge, offering a Nat and Chat Drop-In centre, where you can look over shoes and clothes that have been donated, plus skin care products and soaps. The stock will change according to what's available and Jemma will also offer her established tuition and mentoring services.

Her plans are to open six days a week, 9.30 to 2.30 and then from 5.00 until 8.00. She can fit

in other times if you need her to; she's on 07488 420 420.

FOOD FOR LIFE

Diet and nutrition specialist Ann Malone is bringing a series of good eating evenings to Clows Top's Victory Hall, starting at 6.30 on September 13th.

The sessions will be all about choosing and preparing healthy meals that will improve your life and help keep illnesses at bay. The connection between cardio vascular disease and Type 2 diabetes is well proven to be down to poor diet and lack of exercise.

Each class costs £5.00 and this first one will feature recipes from Africa, India and the Middle East plus other tasty snacks.

Ann is working for a not-for-profit company, Healthy Directions of Stafford, and future workshops on diabetes, weight management and cancer survival will follow if there's interest in the idea.

To book a place for this first workshop, phone 07970 043 828 or e: wellness@ukevolution.com You can get details of future classes by phoning or texting the above number.

It does make sense to learn how our diet can improve health and prolong active life. Don't be jealous of the healthy, join them.

MERVYN'S EPIC RIDE

Mervyn Smith of Highley is a very experienced biker, who worked for both Honda and BMW as a specialist rep. He's now retired and does voluntary work at Willowdene in Chorley.

When he learned about Open Doors, a charity working to make people aware of the threat to people who are Christians, he decided to ride to Hammerfest in Norway, Europe's northernmost town, to spread the word and raise funds to help.

He left Highley on July 7th on his Yamaha, dressed for expected snow and rain along the way north. But in this record summer, when he crossed the Arctic Circle at 8.00 in the morning the temperature was 28 degrees C! He made it to Cap Noord and turned around to ride back. Home on July 27th, he had covered 5907 miles and had seen a beautiful part of the world where you dodge jay-walking reindeer.

His aim is to raise £10,000 for the charity, in support of those who have no voice and live in constant danger. We can all help him in that endeavour with a contribution, large or small. Do it on www.justgiving.com/fundraising/mervynsmith.



Bumperscuff Rescue

• Body Shop excellence • Home convenience

Cost effective car body repairs!

- Bumper scuffs
- Paint scratches
- Kerbed alloy wheels
- Small dents

Free no obligation quotes, all work fully guaranteed Call Andy Taylor now on **07834 322216** or visit **www.bumperscuffrescue.co.uk**



CLEOBURY THE COUNTRY CENTRE

Contacting us:

t: 01299 272 300

e: business@cleoburycountry.com

www.cleoburycountrycentre.com

Training Courses Upcoming:

Emergency First Aid at Work—18th September—£ 70.00
Foundation Cert in Food Safety—18th September—£ 70.00
Paediatric First Aid Course—10th & 11th October—£ 112.00
Fire Marshall— 15th October—£ 65.00

Foundation cert in Health & Safety—17th October—£ 70.00

All course costs + vat

For more information on courses or if you require a booking form
please contact the centre



- UPVC Fascias & Guttering
- UPVC Windows, Doors & Conservatories
- General Home Improvements

- Re-roofing & general building work
- Replacement Glass
- Patio Jet Washing



Free No-Obligation quote. FENSA registered company with years of experience

Call Mike on: 01886 812250 or mobile: 07814 577739

www.skellernsdoorsandwindows.co.uk



**WYRE FOREST
WOODCRAFT**
purpose made joinery

**Specialists in the Manufacture
of Purpose Made Joinery**

- Tailor Made Timber Windows
- Traditional and Contemporary Style Timber Doors
- Custom Made Staircases
- Bespoke Conservatories
- Made to Measure Gates



TO SEE EXAMPLES OF OUR FULLY FACTORY FINISHED JOINERY VISIT OUR WORKSHOPS AND SHOWROOM

www.wyreforestwoodcraft.co.uk

01562 68100 | enquiry@wyreforestwoodcraft.co.uk

Oldington Lane | Firs Ind Est | Kidderminster | Worcestershire | DY11 7QN



CLEOBURY THE COUNTRY CENTRE

Contacting us:

t: 01299 272 300

e: business@cleoburycountry.com

www.cleoburycountrycentre.com

Training Courses Upcoming:

Emergency First Aid at Work—18th September—£ 70.00

Foundation Cert in Food Safety—27th September—£ 70.00

Paediatric First Aid Course—10th & 11th October—£ 112.00

Fire Marshall— 15th October—£ 65.00

Foundation cert in Health & Safety—17th October—£ 70.00

Level 2 Award in Health & Social Care—30th October—£ 70.00

All course costs + vat

For more information on courses or if you require a booking form
please contact the centre



CLEOBURY CHIROPRACTIC

31 High St. DY14 8DQ

www.notjustaboutbackpain.com

A refreshingly gentle method of chiropractic suitable for all ages.

* BACK PAIN * SCIATICA * POSTURAL PROBLEMS

* SCIATICA * SPORTS INJURIES * JOINT PAIN

PLUS * CORPORATE COMPUTER (DSE) WORKSTATION ASSESSMENTS

* BACK CLASS - Weekly exercise class for those with back/neck pain

Sue Brown MA MSc DC MMCA

07932 00 00 28



GCC registered
General Chiropractic Council
www.gcc-uk.org



KINLET HALL

DY12 3AY

VENUE HIRE

GRADE 1 LISTED

EXCEPTIONAL SETTING IN
100-ACRES OF GROUNDS

LICENSED WEDDING VENUE

CORPORATE EVENTS

ON THE B4363, 5 MINUTES
FROM CLEOBURY MORTIMER

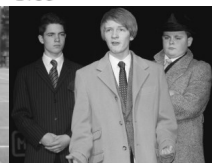
01299 841 230 • WWW.KINLET-HALL.CO.UK



LACON CHILDE SCHOOL

the future begins here

Headteacher: Darren Reynolds



Lacon Childe School, Love Lane, Cleobury Mortimer, DY14 8PE

Tel. 01299 270312

email - admin@lacon-childe.org.uk

Quality financial advice for family, for business, for life



I provide a comprehensive financial planning service offering specialist face-to-face advice tailored to you. My services include:

- Investment Planning
- Retirement Planning
- Business Planning
- Intergenerational Planning

I offer a no obligation initial discussion simply to establish whether I can help you. Please contact me on 07576 484494.

de Courcy May Wealth Management

Email: jon.may@sjpp.co.uk

Mobile: 07576 484494 | Tel: 0121 7336733

Website: www.dcmwm.co.uk

de Courcy May Wealth Management represents only St. James's Place Wealth Management plc (which is authorised and regulated by the Financial Conduct Authority) for the purpose of advising solely on the Group's wealth management products and services, more details of which are set out on the Group's Website www.sjp.co.uk/products.

CLEOBURY MORTIMER SPORTS & SOCIAL CLUB

SEPTEMBER 2018 ENTERTAINMENT PROGRAMME.

SKY AND BT SPORTS

JUKE BOX

POOL TABLE

FANTASTIC OUTDOOR SPACE

EVERYONE WELCOME

CLUB AVAILABLE TO HIRE FOR PRIVATE FUNCTIONS.

£45 FOR MEMBERS

£50 NON-MEMBERS

CALL US ON 01299 271448

OR POP IN TO SEE US.

CHECK US OUT ON FACEBOOK

CLEOBURY MORTIMER SPORTS & SOCIAL CLUB.

Saturday 15th September

The new rugby season has started with them playing home against Uttoxeter. Come support the rugby club.

Friday 21st September

Charity quiz night – help Vicky Hulme to raise money for the Brathay trust young persons charity. 7pm for 7.30pm start £5 per person, up to 5 in a team.

Friday 28th September

OKTOBERFEST

An evening of fun with a German Oompha band. Tickets £5 per person. Tickets will be available from the club. 7.30pm for an 8pm start.

BINGO EVERY MONDAY

8PM-9PM

ANYONE IS WELCOME TO JOIN IN WITH THE BINGO.

MEMEBERSHIP.

Single Adult: £5

Single Senior: £3

Joint Senior: £5

Family - up to 2 adults and children under 18: £10

This month I think it is important that I clarify the roles of the Town Council, County Council and Unitary councillors, as I have ever-increasing enquiries regarding complaints and requesting advice.

The Town Council is an elected body in the first tier of local government with the authority to raise a precept through taxation and to look at what funds are needed looking after our streetlights, public spaces, cemetery and churchyard management, playing fields, community safety, community centres, litter, war memorials, seats, bus shelters and staff.

We play a vital part in representing the interests of the community, improving the quality of life and the local environment and do all we can help influence the decision makers at Shropshire Council.

Your councillors are all volunteers with different backgrounds and a diversity of skills that they use to work as a team for the benefit of the community, not an easy job. The Chairman is the team leader and controls the meetings, but it is only the council as a whole that can make decisions. As Clerk my role is to provide advice, administrative support and to take actions to implement council decisions. I act as project manager, public relations officer, advice and signposting for residents with complete objectivity as I act for the Town council and work with the community and various groups.

Shropshire Council is our principal authority and they have many statutory duties to deliver services such as education, housing, town and country planning, transport, environmental and social services.

In recent times we are seeing cuts to services with some being handed down for us to either take on or lose. So far, we have taken on the public toilets, skate park area and Love Lane play area to secure them for the future.

Currently local councils like us have no cap on what they can precept for, but Local Authorities do, therefore we are now being asked to look at taking further local play areas. There is also a Libraries consultation currently under way – as information becomes available on this we will let you know. Cleobury Town Council will always aim to consult on major issues such as this. A good example is the Neighbourhood plan, which gives us the legal status to be consulted in any future developments planned. Next Neighbourhood Plan public meeting is Friday October 5th 7pm at the Parish Hall and will be a drop-in event, with the next newsletter with all the fact and comments collated from the questionnaire, coming out in September.

Matt Sheehan

**Cleobury
Mortimer**
Town Council



TIME TO CLEAN YOUR OVEN? LET US DO THE JOB YOU HATE

AS SEEN
ON TV

- Ovens
- Grills
- Extractors
- Filters
- BBQs
- Microwaves
- Hobs
- Ranges
- AGAs

Call or go online today for your free estimate

OVENCLEAN
The original oven cleaning specialists

07913 123543
ovenclean.com



BLOCK³ ARCHITECTS

Holly Cottage Baveney Wood Cleobury Mortimer Worc DY14 8JB



Tom Rogers BA(Hons) Arch PG(Dip) RIBA T 01299 841111

Whether it is a new build project, conversion or extension we provide creative and sustainable architectural design solutions from sketch design to completion

If you require assistance or advice on any building or planning related matter, please feel free to call me

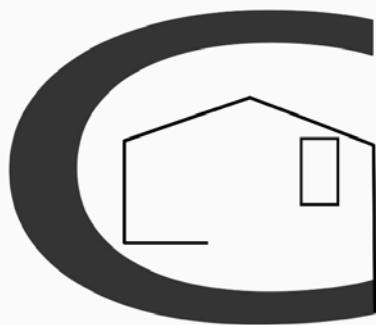


M 07812 196 967



E tom@b3a.co.uk

W www.b3a.co.uk



Chris Stokes
**Roofing &
Building**

www.proroofer.co.uk
tel: 01584 890069
mob: 07853 461290



Now at Cleobury Medical Centre

- Free hearing health checks
- The latest hearing aids
- Repairs and servicing
- Tinnitus Advice
- Independent advice and aftercare service

Tel: 0800 731 8545

Email: clearhear@btinternet.com

Web: www.clearhear.co.uk

NEW FACES ON THE MARKET

There were well known and new faces at the Farmers' Market in August.



Tom Webb was outside, a range of nesting boxes on display. Tom's retired, but a lifetime working with wood means he can't give up the habit.

The nesting version comes in range of styles, all priced at £20 for the standard size. Special needs are not a problem, and waiting to be collected was slightly larger box with bigger access holes, built for squirrels.

We've mentioned Whey More in an earlier report, and they did so well that they were back and looking very busy. Steve Johnson and Nina Jones had

a queue of people waiting to spend. Were they happy?" Oh yes, we do well here. Some people are buying their month's cheese from us." There's a lesson there about quality.



Next to Whey More was Debbie Nunn from Wiltshire Chilli Farms, a family business that grows chills in ten huge units. I tried their Mango Chilli Sauce for stir fries. And I'll buy more - it was very good.



Debbie from Wiltshire Chilli Farms.

CLUBFEST

Not a big crowd when we got to Clubfest at the end of a busy day. But we did make it in time to hear the young lady who everyone seemed to agree was the star of the show.



Hannah Crook is normally a quiet Lacon Childe pupil. Not at all flash or noisy. But give her a mike and she'll show you real stage presence. She had already won the Cleobury's Got Talent competition, then came back on stage to round off the show.

You just don't expect a 14 year old schoolgirl to take a standard like Creedence Clearwater's 'Proud Mary' and give it a lift. She did. People stood and listened until the end of her set and then cheered. A star indeed.



CLEOBURY COUNTRY FARMERS MARKET

IN AND AROUND ST MARY'S CHURCH

Type to enter text

SATURDAY 15TH SEPTEMBER 2018

FROM 9.30AM TO 12.30PM

CLEOBURY MORTIMER PARISH HALL
Flicks starts again this month on Saturday
15th (change of date from the 8th)
with 'DUNKIRK' a very popular film.

A list of weekly activities is displayed
outside the hall. To join in just turn up on
the day to find a good welcome.

To book the hall call Jan 01299 271070

YOUR PARISH HALL - THE TOWN'S BEST VALUE VENUE



Financial Accountants

We are local Accountants who provide a quality service at competitive prices

Not VAT registered so you save 20% on your fees immediately

We can help with the following :

Bookkeeping
Payroll/PAYE
Accounts Preparation
Business and Personal Tax
VAT
Business Start-ups/Financing
Company Formations/Secretarial
Business Advice

Area covered 15 miles of Cleobury

To include :
Cleobury Mortimer
Kidderminster
Tenbury Wells
Bewdley
Bridgenorth
Stourport-on-Severn
Ludlow

Speciality in pub/restaurants and building contractors including CIS sub-contractors

Member



BRITISH INSTITUTE OF INNKEEPING

For a free quote :

Tel : 01299 272647 or mobile 07779 011819

Email : paul@paefinance.co.uk

Website : www.paefinance.co.uk

Community Contacts for Clarion Readers

CEMETERY ADMINISTRATOR	Theresa Ray	07703 965 064	theresa.25016@hotmail.co.uk
CLEOBURY COUNTRY CENTRE		01299 272300	In Love Lane, 9 to 5 Mon to Fri.
CITIZENS ADVICE		08444 991100	Advisors on line 10.00 to 4.00
CLEOBURY CARERS	Wendy Duley	01299 270562	
CLEOBURY COMPASSIONATE COMMUNITIES	Katja Ward	01299 270018	10.00 to 12.00 Weds
CLEOBURY MORTIMER LIBRARY		01299 272301	Open 9 to 5 Monday to Friday and 10 to 12 Saturday
LOCAL POLICE	Constable Anne O'Leary		ann.oleary@westmercia.pnn.police.uk
CLEOBURY MORTIMER GUIDES	Dorothy McBride	07761 976610	
CLEOBURY MORTIMER SCOUTS	Iain Smith	01299 271809	
CRIMESTOPPERS		0800 555 111	Free Police contact. Talk in confidence, to report any crime.
DOMESTIC VIOLENCE HELPLINE		0800 783 1359	Women's Aid, 24 Hour support:
HOME FROM HOSPITAL		01584 878046	Help over the first weeks back home from Age UK
MARKET HALL	Ali Sheffield	07752 542 853	markethall@cleobury.org.uk
MEDICAL CENTRE		01299 270209	Out of surgery hours, use the Shrop Doc Service.
SHROP DOC		0333 222 6655	Service available evenings and weekends
THE PHARMACY		01299 270219	Closes for half day on Saturday. Delivers prescriptions
NEWLIFE CHURCH	Pastor E Stirrup	01562 630595	Sunday services at 10.30
NIGHTINGALE NURSING FUND	Rosemary Abbiss	01746 718451	
TOWN COUNCIL	Clerk Matthew Sheehan	01299 271154	Cleobury Country Centre 9 to 2 pm, weekdays. www.cleobury.org.uk. Council meets in the Centre on the first Monday of the month
POST OFFICE		01299 270211	In the Spar Grocery Store, Church Street
SAINT MARY'S YOUTH PROJECT	Mark Greaves	07828 116810	mark.stmarys@live.co.uk
SHROPSHIRE COUNCIL		0345 678 9000	
SOUTH SHROPSHIRE YOUTH FORUM			richard@ssyf.net.
VOLUNTARY CAR SCHEME		01299 666119	for bookings
WASTE DISPOSAL		0345 678 9007	The contractor is Veolia
WATER SUPPLY EMERGENCIES	Severn Trent	0800 783 4444	

Collect the Clarion in Cleobury from: Select and Save Grocery, The Londis Store, Cleobury Cafe, The Severn Hospice Shop, Mid Counties Co-op, Carrot Tops, Purslows, The Library and Simply Fresh. **Out in Cleobury Country at:** Heath Farm Meats, **Bagginswood; Clee Hill Stores;** The Village Store, **Cleobury North; Clows Top Stores;** The Sun and Slipper, **Mamble; Hopton Bank Service Station;** Bennetts End Inn, **Knowbury; Ludlow Library; Mawley Oak Garage;** The Colliers Cafe & Shop, **Rock;** The Fighting Cocks, **Stottesdon;** The Duck Inn, **Chorley;** The Live and Let Live, **Neen Sollars;** The Eagle and Serpent, **Kinlet;** Parker Motors, **Ditton Priors.**

Copies are also available from the Parish Churches in: Cleobury Mortimer, Bayton, Doddington, Hopton Wafers, Milson, Neen Savage and Neen Sollars.

Missed your Clarion? Cleobury Mortimer Library keeps the current month's copy on file and all back issues are available to read as pdfs from www.cleoburyclarion.co.uk.

THE DEADLINE FOR THE OCTOBER ISSUE IS SEPTEMBER 22nd

Editor and Advertising Sales: Jim Reynolds, 4 Childe Road, Cleobury Mortimer, Shropshire

DY14 8PA. Telephone: 01299 270642 Mobile: 07410 977 212

E-Mail: editor@cleoburyclarion.co.uk or uncle.jim@icloud.com

The Clarion On The Web: www.cleoburyclarion.co.uk

Printed by Glint Print of Much Wenlock. Telephone 07809 228 2578



Cleobury Mortimer

Kidderminster

36 High Street
Cleobury Mortimer
DY14 8DQ

James Preston House
Waterloo Street
Kidderminster
DY11 7FQ

01299 271477



**Lower Street
Cleobury Mortimer** £300,000 Offers Over

A deceptively spacious, individually built, detached bungalow within walking distance to Cleobury Mortimer Town Centre. EPC D

Residential Sales

The Bank of England has increased interest rates to 0.75% - it's just the second time in the past decade that interest rates have gone up, but what will it mean for you? Well, the small rise will have the biggest effect on home owners with variable and tracker rate mortgages (which is around 3.5 million people), although increases for most are likely to be fairly minimal. Every mortgage taken out in recent years has been subject to much stricter lending affordability criteria than ever before, and about 95% of mortgages issued in the past year were on fixed rate deals, according to data from UK Finance.

Meanwhile, base rates, while at their highest level for nine years, are still very low by historic standards and mortgage rates remain low. So no need to panic!



Erica Hinwood
MARLA MNAEA
Office Manager



**Lea View
Cleobury Mortimer** £750 pcm

A beautifully presented three bedroom detached property, situated in a popular development within easy walking distance to the town centre. EPC F

Lettings

Are you prepared if the worst happens and your rental property gets damaged or the tenant refuses to pay their rent? It's rare, but we have known cases when a landlord has ended up in serious difficulty trying to evict a tenant when things have gone wrong. For instance, one of our landlords recently had to go to court because previously reliable tenants were refusing to pay their rent. Whether you own a single rental property or large portfolio, having the appropriate legal protection in place, in the form of Rent Guarantee Insurance, gives you peace of mind if the worst happens.



Coral Walrond
MARLA MNAEA
Lettings Negotiator

PROPERTY AGENTS | VALUERS | SURVEYORS | AUCTIONEERS

www.nockdeighton.co.uk

CLEOBURY MORTIMER | KIDDERMINSTER | LUDLOW | BRIDGNORTH | IRONBRIDGE | NEWPORT | TELFORD | LEOMINSTER