

# The Cleobury Clarion

## NEW FACES ON HIGH STREET

The High Street does seem rather quiet at times, very busy at others. The commuter traffic through from the west of the county to the West Midlands in morning and evening peaks are the obvious periods and we do have new names and faces in the shops. The fact that Cleoburrs is up for sale is the big news, as Robbie looks to go back to sea to keep his valuable sea licence up to date.

Just next door to Cleoburrs is a much updated frontage for PetsMax, a different approach to the matter of feeding your pets on good quality products. Christian and Hannah are the names behind this opening of their first retail shop, with another in Stourport under way and expected soon. More about this go-ahead couple and their plans on Page 47.

Craig Johnson is the new landlord at The Talbot Hotel. He's moved up from Somerset, which should mean he knows the pub trade in a town with

character. We haven't tested the ale he's serving yet, but that will come later this month. In a brief chat we learned that the Sunday lunches are going well; we hope that busy trend continues and wish both places every success.

## THE CLASSIC BIKE SHOW

It's been running a long time. Started in 1985, with an odd break in its habit of bringing classic motorcycle enthusiasts to the town. Next year we will be celebrating 40 years of local history in one modest location.

It was a result of my work as a freelance for 'Motor Cycle News' looking in on a show in Caerleon in South Wales and realising we could do the same here in Cleobury. All profits to Lacon Childe, where my wife was Deputy Head. It helped sell the idea to Headmaster David Carr that he was a Manxman born and bred and had worked on the scoreboard at the TT races as a boy scout. He persuaded the Parent Teacher Association that it

could be a good earner and in September 1985 the Borders Classic Bike Show was born. With much uncertainty about catering and Angela Drennan persuading local traders that they should be available over the two days of the show in case we ran out of food and basics like milk. The Robinsons, bless them, supplied milk and cream at no charge.

PTA events at that time were dances, with a profit of £250 or so a good result. Imagine the atmosphere when the Show takings on the door and in the canteen were added up and the profit was about £850. That was a lot of money in 1985 and was the seal of approval for the show's future.

39 years later we have new blood in the PTA and a new policy of featuring a particular make of bike. This year it's the Triumph Owners club, celebrating their 75th birthday and bringing a lot of British machinery. Wouldn't it be nice if this little show could equal that achievement. *Jim Reynolds*



### OvenGleamers Kidderminster The Oven Cleaning Service

We Don't Just Clean Them  
We GLEAM Them !

Nigel will come to your home and deep clean your cooking appliances until they Gleam. Our unique process is mess, odour and fume free using only organic products within your home. All work is backed by our **Customer Satisfaction Guarantee.**

Safe,  
Eco-Friendly  
Fume-Free &  
Only organic  
Products  
are used

5 ★ Reviews

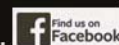


*Nigel from OvenGleamers cleaned my oven and the results were stunning. My oven has never looked so good. I can certainly recommend OvenGleamers. I should also say that Nigel was polite and friendly and cleaned up everything after he'd finished. A brilliant job and well worth the cost.* *Adrian T*

OvenGleamers can clean your ...  
Ovens | Ranges | AGAs | Hobs | Extractors | Microwaves | BBQs

Contact Nigel ~ Your LOCAL OvenGleamer

Find us on ...





# Victoria Allen Funeral Services

An Independent Family Business offering a  
Personal and Professional Service

Over 25 years' Experience

Competitively Priced

Private Chapel of Rest

Golden Charter Pre-Paid Funeral Plans

Covering All Areas

Home Visits Available

## 01584 879035

24 Hour Service

8 Charlton Rise, Ludlow, Shropshire, SY8 1ND  
[www.vallenfuneralsludlow.co.uk](http://www.vallenfuneralsludlow.co.uk)  
Email: [vafs@btinternet.com](mailto:vafs@btinternet.com)



## THE CLEOBURY CLARION. AUGUST 2024



*Learning Young  
See Page 7.*



*A very rare motor at the  
Far Forest Show. Page 11*



*Kristian and Hannah at  
PetsMax. See Page 47*

### And On Other Pages....

5 - Neen Savage Applefest

9 - Ludlow Dog Day

13 - Stepping Out

15 - The Beacon on the Hill

17 - The Old Trkker is Off

21 - September in the Wyre Forest

23 - Stuart Anderson MP

25 - Saint Mary's Benefice

27 - The Festival at the Edge

29 - Cleobury W.I.

32/33 - Doddington Lodge

35 - Simon in the Garden

41 - Mrs Grumpy

45 - Following in Father's Footsteps

52 - Community Contacts

55 - The Social Calendar

56 - Borders Classic Bike Show

58 - The Town Council Report

59 - Job Vacancies



**OvenGleamers Kidderminster**  
*The Oven Cleaning Service*

**We Don't Just Clean Them  
We GLEAM Them !**

Nigel will come to your home and deep clean your cooking appliances until they Gleam. Our unique process is mess, odour and fume free using only organic products within your home. All work is backed by our **Customer Satisfaction Guarantee.**

Safe,  
Eco-Friendly  
Fume-Free &  
Only organic  
Products  
are used

**5 ★ Reviews**

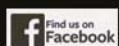


*Nigel from OvenGleamers cleaned my oven and the results were stunning. My oven has never looked so good. I can certainly recommend OvenGleamers. I should also say that Nigel was polite and friendly and cleaned up everything after he'd finished. A brilliant job and well worth the cost.* Adrian T

OvenGleamers can clean your ...  
Ovens | Ranges | AGAs | Hobs | Extractors | Microwaves | BBQs

**Contact Nigel ~ Your LOCAL OvenGleamer**

Find us on ....







follow us on facebook

DRY CLEANING & LAUNDRY SERVICES  
20 HIGH ST, CLEOBURY MORTIMER DY14 8DG  
01299 270571 / 07483 380019  
HOUSEHOLD & COMMERCIAL WORK WELCOME  
FULLY ATTENDED MONDAY TO SATURDAY 9AM-5PM

THE PLACE TO AIR YOUR DIRTY LAUNDRY!!

self service & full service wash/dry/fold/iron large machine for big items  
dedicated machine for pet items equestrian rug cleaning team sport kit laundry service  
professional shirt service dry cleaning service duvet/ blanket/sleeping bag washing service  
Nikwax wash and proof for outdoor clothing  
local delivery available, we specialise in hotel and B&B laundry and ironing

CELEBRATING 10 YEARS IN BUSINESS  
THANK YOU TO OUR LOYAL CUSTOMERS AND THE COMMUNITY FOR THEIR SUPPORT



## Michael Coombes Roofing & Building Maintenance.

Complete Re-roofing, Roof repairs, Pointing & Chimney repairs.  
Slabbing & Brick work  
Wall & Floor Tiling  
Painting & Decorating

Over 20 Years experience in the Cleobury area.

**Call Michael on 07854 047413**



Supplying kiln dried logs in 3 convenient load sizes: a bag, a pickup load or a transit/trailer load. We also stock nets of kindling.

We are Ready to Burn accredited and offer free delivery within 10 miles.  
Logs are between 8-10 inches in length and are kiln dried to 20% or less moisture content.

**\*\* Summer promotion – discount on prices for orders placed between 1<sup>st</sup> June 2023 and 31<sup>st</sup> August 2023 \*\***

For prices, availability or to place an order, please contact us on

**01584 891307 or 07518 810269**

B Price Forestry, The Workshop, Bitterley, Ludlow, Shropshire, SY8 3HW



**Tele:-**  
**01299-272757**

**All digital media printed to 6"x4" 5"x7" 8x6" 10"x8"**  
**CANVAS WRAPS FROM 12"x16" - 30"x20"**  
**ENLARGEMENTS FROM 12X10" TO 24X36"**  
FROM PHOTO'S, DIGITAL MEDIA & 35mm SLIDES

**PASSPORT PHOTO'S ONLY £5-00**  
**WHILE YOU WAIT**

**MOST VIDEO FORMATS TRANSFERRED TO D.V.D.**  
**USB or SD cards**

INCLUDING VHS - VHSC - SONY 8 - DIGITAL 8 - Hi8 - MINI DV & BETAMAX

**REEL TO REEL & CASSETTE**  
**AUDIO TAPES & OLD LPs TO CD**

## Hands on Printing

**PHOTO & VIDEO FILES TRANSFERRED FROM MOBILES TO DVD ETC.**

**STANDARD 8 - SUPER 8 FILMS TRANSFERRED TO D.V.D.**  
**USB or SD cards**  
**DAMAGED PHOTOGRAPHS RESTORED ETC.**

**BIRTHDAY AND CELEBRATION BANNERS**

**Look Who's 50 Today!**

**VINYL BANNERS - BUSINESS CARDS - SHORT RUN FLYERS**  
**INVITATIONS - ORDERS OF SERVICE**

**B-W OR COLOUR PHOTOCOPIES**  
**SELECTION OF PHOTO FRAMES**

**Traditional Studio Portraits and Pet Photo's**

**Email:-**  
**clickclick2@hotmail.co.uk**  
**Mobile 07708 587787**

**43, High St.**  
**Cleobury Mortimer.**  
**DY14 8DQ**



## NEEN SAVAGE

### APPLEFEST

On September 14th Neen Savage will be holding an Applefest in the village hall, starting at 3.00. There will be a Cider and Apple Juice bar, with beer also available. You can bring apples for juicing and pulping and it's a great chance to learn about the wide range of English varieties.

The W.I. will have an Apple Pie competition with classes for all comers, men and Under 16s. Just £1 to enter, bring your pies to the hall between 2.00 and 3.00 o'clock. All pies must have a pastry base and lid, a minimum diameter of eight inches and only apples in the filling. Sounds lovely - just like my mum used to bake. And the winner will be declared the Neen Savage Bake Off Champion.

And just to keep the traditional air alive, it will be a Cash Only event. That will be such a welcome change from the No Cash Accepted ruling at a recent Silverstone event!

*Jim Reynolds*

### SWIFT WATCH '24

The weather this summer has not been good for us humans with long periods of cold wet weather. It has also been tough for our Cleobury swifts. Around twenty arrived from Africa late, in early May and only had a few days of ideal hunting and feeding weather before going back to Africa in the second week in August. As always they are difficult to count but no

more than 23 were counted leaving us in August. The average number has been a pretty constant 27 over a nine year counting period - so we are down in numbers. Let's hope they can recuperate and be with us next year.

While counting swifts in July I heard and sighted a feral pink and green Parakeet. In urban southern England they are quite common. Will they join Kites as new species to be seen in Shropshire and will they compete with our native birds?

### IS THERE AN ORGANIST IN THE TOWN?

Would you be able to play the organ on the 1st and 3rd Sundays of the month at our 10.00 am Eucharist?

To give you some background, we have one organist and choir leader who plays on the 2nd and 4th Sundays but has commitments elsewhere on the other two Sundays. The services are all at 10 am. The first Sunday of the month is a Family Eucharist and so has 4 simple hymns only, with hopefully some covering music at the beginning and end of the service and during communion. The 3rd Sunday is a Sung Eucharist with the same additions.

Please contact Rector: Ashley Buck, Church Warden: Liz Smith or email [cleoburychurch@hotmail.com](mailto:cleoburychurch@hotmail.com), 01299 272916

### POETRY AL FRESCO

The Nearly Dead Poets' Society seem to have taken up an

outdoor life, with their July meeting held on the town's sports field on a balmy evening. Some might call the offerings more than barmy, but let's not offend the scribes.

Pauline offered one of her published works entitled "Summer" while David found a tale from years back about a lady who named houses for her special effect and Tina offered a number of Wendy Cope's works. All in the fresh air with no alcohol to impede the brains.

In September we will meet at the library at 7.30 on Monday the 30th, hopefully indoors and safe from autumn draughts. Our subject will be 'Holidays'.

### THE ROYAL BRITISH LEGION

The Cleobury branch of the Legion will hold its Annual General Meeting at the Sports and Social Club on September 11th, commencing at 7.00.

The annual Harvest Auction will be held two days later on Friday the 13th, which we hope will bring good luck. As ever, in the Sports and Social Club, start time 7.00

Members at the branch's August meeting acclaimed the generosity of Mark and Myfanwy Baldwin for hosting a dinner for member member Ray Wilson's 90th birthday.

Members are reminded that a social meeting will be held at the Talbot Hotel on Wednesday the 25th this month. An informal occasion, open to all with a military interest, whether they are Legion members or not. Watch this space for future dates and venues for these meetings.



## Find Your Smile at Cleobury Dental Practice

Whether you're looking for dental implants to replace missing teeth, invisible braces for a straighter smile, boosting your confidence with teeth whitening or a dedicated dentist for your regular care, you can find it all here in the heart of historic Cleobury Mortimer.

- Modern, state of the art facilities and the latest dental technology
- Free car parking adjacent to the practice and step-free access to our dentists' surgeries
- Enjoy private dental care from just 47p per day with our membership plans
- Highly experienced in helping those with dental phobias

### Services Provided

- Tooth-Coloured (White) Fillings
- Sedation for Anxious Patients
- Teeth Straightening with Braces and Invisalign
- Dental Implants (Replacement of Missing Teeth)
- Emergency Appointments Slots Available (first come first served)
- Hygienist Services
- Private and NHS Care (NHS subject to capacity)

### Opening Hours

Mon, Tue, Wed and Fri **9am-5pm**

Thu **9am-7pm**

Saturdays **by appointment only**

**Tel: 01299 271 747**

**[www.cleoburydental.co.uk](http://www.cleoburydental.co.uk)**

BDA Good Practice  
Member

 **invisalign**  
PROVIDER

## LEARNING YOUNG

Younger generations are frequently criticised for thinking food comes from supermarket shelves. Not the children who attend Cleobury Country's nurseries and primary schools and the Wyre Forest School for those with special needs. For the third year, they all entered Cleobury Gardeners' Learning to Grow Food competition.



They have learned about seeds: why seeds differ in size; how to sow and nurture them, providing the best growing conditions; how to cook and prepare the food they have grown; and how new seeds are produced. This year focused on pollinators and their importance for food crops to be productive.

Many thanks go to Farlow Farm Nursery, which provided large pots and peat-free compost, and a member who donated pea and broad bean seeds, both flowering plants needing pollination, as well as borage and calendula seeds for companion planting.

We also drew on the legacy that Joyce Wakeman, one of our former members, kindly left us

in her will, to purchase bug hotels that were distributed to entrants last year to encourage pollinators to check in before this summer's competition. This legacy also funded the prizes.

In the pre-school section Abkats Nursery took first place, with Kinlet Family Playgroup and Ever After Nursery joint runners-up. Stottesdon Primary School won the schools' category, with Cleobury Mortimer Primary School runners-up: Farlow Primary School and Wyre Forest School were highly commended.

The children's range of knowledge and skills developed were outstanding and the judges could barely believe how much they had learned. They can easily teach adults a thing or two about where food comes from and the importance of pollinators and a healthy environment if we are to produce good quality food now and for the future!

*Flo Hadley*

*Chair - Cleobury Gardeners*

## HEALTHWATCH APPEAL

Healthwatch Shropshire wants to hear from anyone who's used pharmacy services since February this year. Chief Officer Lynn Cawley explained: "We would like to understand the experience of patients using pharmacies. To share experiences people can contact us online <https://www.smartsurvey.co.uk/s/HWSpharmacyservices/> or ring our office and talk to one of the staff on 01743 237884.

Healthwatch Shropshire is the independent health and social care champion. It gathers the

news and experience of a wide range of people. It also has statutory powers that it can use to influence service provision. It is one of 148 Local Healthwatch units in England.

## HOPTON WAFERS VILLAGE HALL

It's looking like a busy month at Hopton, with a "Beer and Tittles Night" on Saturday the 7th, starting at 6.00 and promising to go on until it's late. There will be a pub skittles lane with a licensed bar with beer on tap and other drinks and nibbles. Entry is just a fiver; book your place with Maria on [hoptonwafersevent@gmail.com](mailto:hoptonwafersevent@gmail.com) or text 07970910348. It's all about raising money for the Millbrook Suite at Kidderminster Hospital, where they look after cancer patients.

And there's a Fundraising Afternoon Tea two weeks later on the 21st, 2.00 to 4.00 o'clock. A delicious selection of scones, cakes and sandwiches on offer, with tea, orange juice or fizz according to your taste. Tickets at £12.50, available from Maria at the contact details in the above paragraph. In this instance, the funds raised will go to Macmillan Cancer Support.

Two promising events and all in support of a good cause.

## SILLY BIT

**A man walks into a bar, wearing a hospital gown, with a drip on his arm.**

"What can I get you?" asks the concerned barman.

"A scotch, please," says the man and downs it in one.

"I don't know if I can pay with what I've got," says the man.

"What is it you've got?" asks the barman.

"50p" says the man.





RED  HARE

45 HIGH STREET  
CLEOBURY MORTIMER  
WWW.REDHARESALON.CO.UK

01299 270702

PPD FREE - PARABEN FREE - SULPHATE FREE - CRUELTY FREE

“Red Hare now offers a private hairdressing room. Perfect for those wanting more privacy, peace and quiet”

YOUR  
HAIR  
IS  
OUR  
BEST  
ADVERT



**Sue Brown**  
MA MSc DC MMCA  
CHIROPRACTOR

**Hands for Heroes**  
Free Chiropractic Care for War Veterans



**GCC registered**  
General Chiropractic Council  
www.gcc-uk.org

## CLEOBURY CHIROPRACTIC

31 High St. Cleobury Mortimer DY14 8DQ

We offer both **CHIROPRACTIC** and **OSTEOPATHY**,  
using gentle methods suitable for all ages.  
Appointments available outside of normal working hours.  
Both practitioners are fully registered, insured & regulated.

- \* BACK PAIN \* SCIATICA \* POSTURAL PROBLEMS
- \* JOINT PAIN \* HEADACHES (arising from the neck)
- \* Some SPORTS INJURIES

**PLUS** \* **COMPUTER (DSE) WORKSTATION ASSESSMENTS**  
\* **BACK CLASS** – Weekly exercise class for those with  
back/neck pain.



01299 519351 / 07932 000028 / 07506 287191

www.notjustaboutbackpain.com

www.jsosteopaths.co.uk

**JS** James  
Smith  
OSTEOPATHS

**iO**  
THE INSTITUTE  
of OSTEOPATHY



### LUDLOW DOG DAY

The tenth Ludlow Dog Day on July 28th was another roaring (or should that be barking?) success. An estimated crowd of 2,000 people plus dogs crowded into Stokesay Court to enjoy the sunshine and a great display of man's best friend.

20 fun dog competitions, plus have-a-go events were there for owners to show off their charges plus serious demonstrations from the likes of Paws for Thought Display Team, Bliss Gate Obedience Team, All Positive Dog Services and Paws of Parham reminded us of the versatility and intelligence of the animals at work.

The day was ultimately about raising funds to help needs and the Ludlow Rotary Club thinks the day will produce between £12,000 and £15,000 for the Ludlow Rotary Cares grants scheme. That will bring the total raised over ten years to well over £140,000!

Club president Robert Hodge thanked all who came along to take part in the event or as spectators, plus host Caroline Magnus and sponsors the Sinclair Group, Brightwells, the Vertu Group and Teme Veterinary Practice. And top dog of the day was Craig Henn's English Pointer, Stanley.

### A COCO APPEAL

**Anthony Peterson explains:**

G'day all,  
Local charity Cleobury Compassionate Communities (CoCo) has a waiting list of six clients in need of befriending. Katja Jones (CoCo Volunteer Coordinator) is looking for six volunteers to help/support these clients.

See attached and the website for more information.

[Home - cleobury compassionate communities \(cleoburycoco.org.uk\)](http://Home - cleobury compassionate communities (cleoburycoco.org.uk))

If you know anyone who might be interested, please shout. I can talk anyone who is interested through the process and rewarding experience as I'm a CoCo volunteer.

I can also talk through the Olympics medal table. AP

#### DAVID MORRIS R.I.P.

**MORRIS David (Pedler)** of Cleobury Mortimer, passed away peacefully on 4<sup>th</sup> August, aged 79 years.

Beloved Husband of Sylvia, much-loved Dad of Anthony. Loved and dearly missed by all his family and friends.

A Service Celebrating David's Life took place on 29<sup>th</sup> August at St Mary's Church, Cleobury Mortimer. Donations received in David's memory will be shared

between Cleobury Scouts and Highley Cricket Club and may be sent c/o the Funeral Director: Victoria Allen Funeral Services, [8 Charlton Rise, Ludlow SY8 1ND](http://8 Charlton Rise, Ludlow SY8 1ND). 01584 879035

### THE BREAKFAST CLUB

For our August meeting, the Club did not have a speaker, but members met at the Golf Club for a sociable breakfast taken outside on the patio.

The Club's next meeting will be at the Golf Club on 10 September, with Francis Engleheart talking about Kinlet. Anyone wishing to attend should contact Angela Drennan (270636).

New members are welcome! There is no actual membership fee, and no formality, but we offer a monthly programme of interesting talks, and hearty (or Continental) breakfasts. Meetings are almost invariably held at 7.30 am on the second Tuesday of the month. Angela Drennan will gladly provide further details - just give her a ring on CM 270636.

#### SILLY BIT

**Always remember: I before E, except after C. That has been disproved by science.**



UPHOLSTERY & INTERIORS

**Rosemary Jones**

Mob: 07837 609229

Phone: 01584 861823

Email: [info@charltoninteriors.com](mailto:info@charltoninteriors.com)

[www.charltoninteriors.com](http://www.charltoninteriors.com)

### MOBILE FOOT HEALTH CARE

A thorough nail and foot care treatment in the comfort of your own home. Registered and Insured practitioner.

**Karen F H Di, RFH**

**07378 122788**

## Do you have a Will? Never managed to get it written?

Writing your Will and planning for later life can feel like a daunting process...

**It doesn't have to be!**

I guide you through the process of writing your Will and Lasting Powers of Attorney

**Call me now to find out how I can help**

**07966366505**



**I'm Stephanie**

The Will Writing Group



07966366505 | [Info@thewillwritinggroup.co.uk](mailto:Info@thewillwritinggroup.co.uk) | [www.thewillwritinggroup.co.uk](http://www.thewillwritinggroup.co.uk)



Electrical installations from domestic to commercial and industrial no job to big or small.

Over 16 years experience.  
Local family run business.

Contact: Phone 07872498829  
Email [lee.leapelectrical@gmail.com](mailto:lee.leapelectrical@gmail.com)



Friendly, honest tree surgeon serving  
Bewdley and surrounding areas.

**Contact Isaac  
for a free quote!**

**Mob: 07845 615 806  
Tel: 01299 513 448**

All Aspects of Tree Work  
Stump Grinding

Hedge Trimming/Reducing  
Grounds Maintenance

Logs &  
Woodchips

**Qualified**

**Insured**

**Tidy**

Email: [elphicktreeandgarden@gmail.com](mailto:elphicktreeandgarden@gmail.com)

Web: [www.elphicktree.co.uk](http://www.elphicktree.co.uk)



## FAR FOREST SHOW

It's one of the best local events, nearly on the doorstep at the A456 site that the organising body has owned for years, nearly always blessed with good weather and a huge variety of local skills and interests on display. Every one who gives their time as a volunteer deserves a round of applause. This year's show was on the weekend of August 10th and 11th

A favourite with the children is the ride on a trailer pulled by a tractor. I was puzzled by the driver who waved as he went past until the screen was pulled back on one stop and Tony Pain grinned widely. He'd supplied tractor and trailer and backed that up as chauffeur. That meant Ray Attwood was promoted to car parking manager, where he continued the reputation for doing a fine job in accommodating enough cars to empty the county's roads.

The baking temperature did not suit one of the usual stars and the dog show was cancelled. Shame! Time for an ice cream and cool drink

On one car rank was a very unusual exhibit, a Ford Escort van converted into a camper, complete with a rear extension to provide a place for lunch or just a quiet cup of tea.



*Typical of the sights you can spot at country fairs and remind you to never say "That can't be done." Oh yes it can.*

In these days of £10 almost the charge for any event, this one could cost you £8.00 a head if you booked in advance. Great value with such a range of things to see.

We were making our way to the car park and the drive home when a familiar face caught my eye. It was Ray Blount, who I remembered for his very smart Morgan 4/4, but this time deep in conversation

about a car I'd never seen before. A 1980 Suzuki SC100 that he's owned from new, very smart and the speedo showing just 19,000 miles for its 44 years on the road. That's the earliest Suzuki I've ever seen, in this case looking darned nearly new.



Ray was telling my lady Tina all about the car when another lady's jaw dropped at the sight of it. She had one of these as a young thing and loved its looks and the way it went. Went so well that she turned it over! We left them to talk and headed happily home. A good weekend and a great show; long may it please so many local people. JR



### Home Support Services

All staff enhanced DBS checked with over 20yrs experience and training within the local authority/social services mainstream and dementia care sector. Fully insured.

#### Are you in need of support with the following basic day to day tasks?

Assistance during the day or night

Companionship

Shopping/Household tasks

Completing Forms

Pet Care

Attending social events/ appointments

Contact Liz

Tel: 01299 271623

Mob: 07826 929222

[liz@livelifeathome.co.uk](mailto:liz@livelifeathome.co.uk)

Other support services available on request.

[www.livelifeathome.co.uk](http://www.livelifeathome.co.uk)

Contact Tracey

Tel: 01299 211660

Mob: 07957 659909

[tracey@livelifeathome.co.uk](mailto:tracey@livelifeathome.co.uk)



## Traditionally handcrafted bespoke oak frame buildings



**Here at Hopton Oak we  
design, build and install:**

- Stables
- Porches
- Garages
- Extensions
- Garden rooms
- Conservatories
- Gazebos and Pergolas



Contact us to discuss your oak frame project or any questions, the team will be happy to help.

**hoptonoak@outlook.com | 07951041977 | hoptonoak.co.uk**  **Hopton Oak**



**WINDSOR PRICE REPAIR SHOP**  
Automotive

Email: [mikeytwonames@icloud.com](mailto:mikeytwonames@icloud.com)

Tel: 01299 213558

Mobile: 07513 821616

Unit 1, Hillocks Farm,  
Clebury Mortimer, DY14 0EB.



## IRENA'S FOOT CLINIC

OVER 30 YEARS EXPERIENCE AS A QUALIFIED FOOT HEALTH CARE PRACTITIONER  
PROFESSIONAL TREATMENT IN THE COMFORT OF YOUR OWN HOME OR MY SURGERY

- Nail trimming
- Ingrowing toenail treatment
- Fungal infection treatment
- Nail reconstruction
- Callus reduction
- Corn removal
- Athletes Foot treatment
- Verruca and wart treatment

**CONTACT IRENA ON 01299 270212 and 07789070629  
1 FURLONGS ROAD, CLEOBURY MORTIMER DY14 8AR**



## **THE FOOTPATH ASSOCIATION**

### **Country Walk**

Our country walk coincided with the run around Cleobury Mortimer.

I certainly did not want us to get caught up with the runners and decided to make sure our route took us well away from them. The possibility of someone breezing past me as I puffed my way up a hill would have embarrassed me immensely and I did not want my group thinking we had decided on a faster pace either. Happily, our walk was noneventful as we enjoyed the warm weather, our route taking us along the river towards Mawley,

(unfortunately the paths up to Mawley itself are currently closed). We crossed the A4117 towards Mawley Town Farm and enjoyed the views over our town, Clee Hill, and Brown Clee. Our walk took us along quiet lanes, then back through Neen Savage, along a bridlepath toward home. Nine of us took on the route.

Our country walks are the first Sunday of every month, usually starting from St

Mary's Church in Cleobury Mortimer. Details can be found on posters around the town or on the CMFA website.

### **Social Walk**

The walk in started at the Fountain Inn, Tenbury Wells. The walk had great long-distance views and took a circular route starting across Oldwood common. The walk crossed fields and followed tracks with a couple of short stretches on very quiet lanes then a very short climb followed by a gentle ascent of Haws Hill. The walk descended through woods, then returned through more fields and along tracks returning to the pub, where there was an option to purchase lunch.

Our Social Walks, longer than our Country walks, take place, usually the last Saturday of the month, starting at a venue chosen by the walk leader.

### **Walking for Health**

Twenty-six walkers including three children enjoyed a short WfH walk from the SVR car park in Highley. A visit to the free Engine Shed for refreshments en-route was a hit for the children and some adults having a turn at the old

time Funfair side stalls. Our final 'Awayday' of the year will be a circular riverside walk on Sept 11th to Bewdley.

Details from [ajkimber@hotmail.com](mailto:ajkimber@hotmail.com) or visit CMFA website.

### **Just a mention:**

The warm, wet weather this year has meant our paths are quickly becoming overgrown. We are trying hard to clear paths; however, we are always in need of volunteers to support our clearances. If you are walking and can carry secateurs, please 'Snip and Slash' as you go.

If you are unable to do this, then contact us if you come across overgrown areas that need clearance. We will do our best to clear paths as soon as possible.

Contact our website or: [zellcmfa@gmail.com](mailto:zellcmfa@gmail.com)

### **SILLY BIT**

**A man is sitting in the cinema with his dog on the next seat. The dog watches the film carefully and laughs at all the jokes, to the amazement of a woman sitting close to the pair. "I was amazed at your dog, he really enjoyed the film" she says to the man. "So am I," replies the man. "He didn't like the book."**

# **Firewood**

**Seasoned logs, barn dried & ready to burn.**

**Free local delivery -01584 890993 or 07970878224**

**Various size loads available**



**Paul Harding Tree Services**







The Boxing Club will start  
up again in the Autumn.  
Watch this space

SAVE THE DATE  
military wives  
Choirs  
Cosford  
11 OCTOBER

Cleobury Mortimer Parish Hall is the largest in the area

Would you like to celebrate an event, party, wedding, or just a get together?  
We are able to cater for small or large parties, sit down dinner parties for up to 100  
people with or without a bar.

Come and have a look at what we can offer. To book, call Robert on 01299 270047

 [www.cleoburyparishhall.uk](http://www.cleoburyparishhall.uk)

 [cleoburmortimerparishhall](https://www.facebook.com/cleoburmortimerparishhall)



### 21 September 7.30pm - Hidden Figures

Dorothy Vaughan, Mary Jackson, Katherine Johnson, and Christine Darden were good at math...really good. They participated in some of NASA's greatest successes, like providing the calculations for America's first journeys into space. And they did so during a time when being black and a woman limited what they could do. But they worked hard. They persisted. And they used their genius minds to change the world.

Tickets £5 - Bar, tea, coffee, cake



Care At Home

TLC Care at Home are a well-established family run, Home Care Provider who have built up an excellent reputation within our local communities

We have recently been rated as **OUTSTANDING** by CQC and this puts TLC Care at Home in the top 3% of providers in England



### Professional care and support in your own home

Our dedicated Care Team are here to help support you with 24/7 care provision should it be required. At TLC Care At Home, we are dedicated to supporting people with wide range of needs, including Dementia, Acquired Brain Injury, Physical Disabilities, Learning Disabilities, Sensory Impairments and supporting our aging population.

Depending on your individual needs, we can offer varying degrees of support from young adults to very mature people. TLC Care at Home are here to help anyone who requires care and support to enable them to remain living at home for as long as it is safe to do so.

### Comprehensive range of care services

- Domiciliary Care
- Palliative care
- Personal care
- 24 hour care
- Companionship
- Dementia Care
- Overnight Care
- Elderly Care
- Care for young adults
- Supporting younger people
- Domestic services: cleaning, cooking, washing and shopping
- Collections of pensions or prescriptions
- Trips out and about

Please contact us now for more information **01299 272 897**  
Email: [wecare@tlc-careathome.co.uk](mailto:wecare@tlc-careathome.co.uk)  
Website: [www.tlccareathome.com](http://www.tlccareathome.com)



## THE BEACON ON THE HILL

### Jim Grevatte reports progress:

The Clee hills have such a rich history and so much rests in people's homes and in their memories. The *Beacon on the Hill* team at St John's Doddington invited people to share their stories and photos. The results were amazing. From a tiny pair of Victorian child's shoes to touching stories of how relatives have overcome some tough conditions to carve a life on the hill. Locals helped identify faces, places and events in our growing community archive as well adding to the memory map of the area. If you have any old photos of people, places or events on the hill, the team would love to see them. Get in touch with Jim or Celia [stjohnsdoddington@gmail.com](mailto:stjohnsdoddington@gmail.com)

The project also organised a walk through Titterstone Clee Hill's industrial history led by Alf Jenkins MBE. This fascinating route takes in the quarries at Titterstone summit, Craven Place and the modern workings as well as a railway, two inclines and a coal mine. The walk will be published later in the year so that everyone can explore this unique landscape.

There are opportunities to get involved this month too. There will be a nature photography walk on 7th September led by

experienced photographer Julian Cartright. This will be your chance to explore a range of habitats and get expert tips to capture the best images. On 14th September Rev Mark Daborn will be leading a walk between four Clee Hill churches as part of Heritage Open Days and Ride and Stride. Everyone is invited to join the walk either in part or the whole 10 miles. For those looking for a more creative experience, the project has also organised a felting workshop with local artist Iris Todd. On Saturday 28th September you can come along to try your hand at wet felting techniques and contribute to a new textile piece which will be on display at the church. Visit the new St John's website [stjohnsdoddington.org](http://stjohnsdoddington.org) or follow on Facebook or Instagram for further details.

Jim Grevatte

## VOLUNTEERS WANTED

Marches Energy Agency are looking for individuals interested in helping everyone in their community to keep warm, save energy and cut carbon. By joining our charity you will make a real difference in your local community by providing tailored energy advice to those in need.

We offer comprehensive training in energy efficiency by

our expert energy advisors in order to help you become a Community Climate Connector in your local area. These sessions are designed to suit your needs and interests and could include :

Conduct home visits to give basic energy efficiency advice to householders.

Provide and install low-cost measures into people's homes (e.g. LED bulbs, draught excluders etc).

Use thermal imaging cameras (subject to availability).

Conduct Home Energy Audits using our HEAT app to identify opportunities to save energy, carbon, and money.

Guide householders to grant funding opportunities.

Be carbon aware training delivered in collaboration with Save Our Shropshire.

We can also provide marketing resources, social media and event support, and administrative tasks with our team of marketing experts. All volunteering opportunities are subject to a fully funded DBS check.

For more information, please contact the Project Manager via telephone; 0800 677 1307 (option 5) or email; [office@mea.org.uk](mailto:office@mea.org.uk)

## Lower St Garage

7 Lower St, Cleobury Mortimer. DY14 8AA

- M.O.T.s on cars, motor bikes & small commercial vehicles
- Tyres, Tyre fitting,
- Puncture repair and Tracking.
- Diagnostics, Air conditioning
- Welding.
- Service and Repairs to most vehicles.
- Delivery and Collection Service Available



**Contact The Team at Lower St Garage on: 01299 270208**



## **TINA HOBIN**

Known as 'The Mother of the Dance', Tina led the way in showing and teaching what we in the UK call the 'Belly Dance', but she prefers to call it 'The Dance of Life', since its practice is an aid to women's health and well being, with a history of thousands of years as an aid to pregnancy.

Tina pioneered the dance in the UK 50 years ago and has appeared on TV and the national press many times. She has published books on the subject and its health and fitness benefits. The movements are based on the natural structure of the human form, moving the body as it was designed to do. This improves balance, flexibility and co-ordination. It is suitable for all sizes and ages, from 3 to 83, irrespective of health or fitness levels.

Tina lives in Cleobury Mortimer and conducts classes in the Market Hall every Thursday, from 7.30 to 8.30. They are a friendly experience that have helped newcomers discover a more relaxed way of life with gentle exercise. Suitable for both women and men. Tina is on 01299 272882 or [tina.hobin1@gmail.com](mailto:tina.hobin1@gmail.com)



Comfortable and spacious pens for single or double occupancy  
fully licenced by Shropshire Council

**visit our website: [www.purrfectcattery.co.uk](http://www.purrfectcattery.co.uk)**

**Contact us on: 01299 270565 or mobile: 07968 111415**

**Or email: [enquiries@purrfectcattery.co.uk](mailto:enquiries@purrfectcattery.co.uk)**



### MELVILLE CHAPEL

The Church will re-open following a renovation project on Sunday 8th September at 5.00. There will be a bring and share tea at 5.30p.m, followed by a Chapel Anniversary celebration service at 6.30p.m led by Rev Kim Stilwell

Please come and join us at this event. Thank you to all who have supported us in any way.

Harvest Festival is on September 29th at 6.30p.m, led by Kester Dean.

Please note that soup lunches will begin in October on 9th at 12.30 p.m

### CLEOBURY OLD TREKKER

A bit of an update. At last we have some fairly consistent warm weather. It doesn't seem that long ago when I was up in the Highlands over the Easter break, Pauline and I spent 10 days at Fort William. The plan was to climb Ben Nevis a couple of times but when we got there it was snowing. It was bleak in a caravan but not as bad as for people under canvas.

We had one day that was looking good; ideal weather when I set off, I made good progress; it was getting colder the higher I climbed, I just got to the end of the zig zags just over  $\frac{3}{4}$  of the way up when I got to the Snow / Ice line, I was just putting the crampons on when I saw people coming down and they advised me not to go any further as a storm was moving in. I started to make my way down, a good move as the storm made its way down too and we got soaked. Since Easter, which seems an extremely long time ago

now, I've been out most days walking and climbing, over the Shropshire Hills, back to Snowdonia, Malvern, Pen-y-Fan etc. I leave the UK early in September for Kilimanjaro and because of this I've increased my training to 50 miles per week walking. I have recently joined the Cleobury Running Club who have given me great support,

I'm now into my last four weeks

so as mentioned it's been a hard 14 months since I decided to take the challenge and even if I say it myself it's not too bad for a 76 year old.

Thank you time:

To my wife and family, who like me have lived Kilimanjaro for Breakfast, Dinner and Tea, and all times in between. All my sponsors that have supported me. The Children and staff at Moor Park School. The Companies whose names will be on the banner I'll take with me.

I'm doing all of this for The Heart Foundation, Raynaud's and the Children at Moor Park School Ludlow. All the money collected will go to these charities as Pauline and I are self funding this Challenge.

If you would like to help me and these worthy charities please go to the link below.

[www.gofundme.com/f/an-old-trekker-needs-a-bit-of-help](http://www.gofundme.com/f/an-old-trekker-needs-a-bit-of-help)

*The Cleobury Old Trekker and Family*

### IN MEMORIAM

**Skellern Jayne Audrey** of Cleobury Mortimer, passed away peacefully on 7<sup>th</sup> August 2024, aged 60 years.

A much-loved wife and mum.

Jayne will be so sadly missed by all her family and friends.

A Service of Thanksgiving for Jayne's life will take place at Wyre Forest Crematorium on Friday 6<sup>th</sup> September at 1.30pm.

Family flowers only please. Kind Donations received in Jayne's memory will be shared between The British Heart Foundation and The RSPCA.

All enquiries please to: Victoria Allen Funeral Services, 8 Charlton Rise, Ludlow. 01584 879035

### THANK YOU

Saint Elizabeth's church would like to thank everyone who helped with, and supported, our Jumble Sale that took place on a lovely sunny day last month. This enjoyable event raised £249.90 in aid of the Midland Air Ambulance Service.

*Joyce Manning*

### KNIT AND NATTER AT CLEETON SAINT MARY

A little further on in this issue, on Page 29, you'll find an invitation to join a Macmillan Coffee Morning at Cleeton Saint Mary. If you haven't discovered this fine little village yet, it's well worth the effort.

And you'll find that the Knit and Natter group who are organising the Macmillan morning are a lively bunch who get together in the church on Wednesday mornings, 10.00 to 12.00 noon to chat and exchange ideas, with a modest charge of £2.00 to cover the cost of coffee and biscuits. Newcomers are very welcome and the scenery up there is just wonderful.

# BOILER INSTALLATIONS

## GAS, LPG & OIL BOILER SPECIALISTS

**UPGRADE YOUR OLD BOILER TO AN A-RATED BOILER & SAVE UP TO £580 A YEAR ON YOUR ENERGY BILLS**

"Excellent service! They turned up when they said they would, and did what they said they would, going the extra mile when necessary. I highly recommend this company!"

**WORCESTER**  
Bosch Group  
Accredited Installer



**SHELTER-ADAMS LTD**

0800 6124 109 | 07990 523 790  
enquiries@shelter-adams.co.uk



0% Finance & Interest  
Bearing options available  
on boiler installations!  
11.9% Representative APR

Locally based family run business in the Heart of Worcestershire

### HOPTON BANK SERVICE STATION

- Car servicing & Diagnostics
- MOT testing
- Clutches/brakes/tyres/batteries
- Car sales
- 24 hour petrol station

Contact Number: 01584 890225



CAR SERVICE

Number Nineteen  
**No.19**  
Dental Laboratory

### Denture Repairs

#### SPEEDY, QUALITY DENTURE REPAIRS

Cracked/broken dentures repaired the same day.

A 1 HOUR service is available for when time is of the essence, just call to make an appointment.

19 Lower Street, Cleobury Mortimer, DY14 8AL

Email: [nevilleweaver@googlemail.com](mailto:nevilleweaver@googlemail.com)

Phone: 07973856733

All work undertaken by a GDC registered technician



**A.B. Plastering**  
Plus Traditional Lime Plastering

**Adrian Booton**  
PLASTERER

4 Severne Green, Bayton  
Nr Kidderminster, DY14 9LL

Tel: 01299 832 838  
Mobile: 07974 582 524



Rob and Annie look forward to welcoming you to  
**The Fighting Cocks Inn, Stottesdon.**

Why not pop along for a drink and some delicious food. We have regular live music, so please keep an eye on our Facebook page.

Our opening hours are:

**Wednesday – Friday** from 5pm – 11pm  
(food served from 6pm – 8.30pm)

**Saturday** from 12 noon – 11pm  
(food served from 1pm – 7.30pm)

**Sunday** from 12 noon – 10pm  
(lunch from 12 noon – 3pm)

The Fighting Cocks Inn, 1 High Street,  
Stottesdon, Kidderminster DY14 8TZ.

Telephone 01746 718270

**A WARM WELCOME AWAITS YOU.**





## What can a Nutritionist help with?

- Digestive issues
- Chronic Fatigue
- Sleeping issues
- Painful periods
- Menopause
- Migraine
- Type 2 Diabetes
- High Cholesterol
- Skin Conditions
- Children's Health
- Anxiety/Depression
- Vegan/vegetarian diets
- Weight Management
- plus many more

Visit [www.eatyourselfbetter.co.uk](http://www.eatyourselfbetter.co.uk) to find out more or book a free mini consultation to see what I can do to help you. 07790521636

## TIME TO CLEAN YOUR OVEN? LET US DO THE JOB YOU HATE

AS SEEN  
ON TV

- Ovens
- Grills
- Extractors
- Filters
- BBQs
- Microwaves
- Hobs
- Ranges
- AGAs

Call or go online today for your free estimate

**OVENCLEAN**  
The original oven cleaning specialists

07913 123543  
[ovenclean.com](http://ovenclean.com)



FOR ALL YOUR ACCOUNTANCY REQUIREMENTS

[www.fairway-accountants.co.uk](http://www.fairway-accountants.co.uk)

Head Office: 01299 822283  
[team@fairway-net.co.uk](mailto:team@fairway-net.co.uk)

Simon Hector: 07896 439594  
[sjh@fairway-net.co.uk](mailto:sjh@fairway-net.co.uk)



*Richard Haines*

The Worcestershire Chimney Sweep

- ♦ Traditional & Power Sweeping Services
- ♦ Certified Chimney Sweep
- ♦ Insurance Recognised certificate issued



M: 07752 116629 T: 01584 781358 E: [lostcity5@hotmail.co.uk](mailto:lostcity5@hotmail.co.uk)

[www.theworcestershirechimneysweep.co.uk](http://www.theworcestershirechimneysweep.co.uk)





This month I want to feature some of the smaller creatures that live amongst the oaks of the Wyre Forest: the invertebrates that can easily go unnoticed as we stomp along, busy with our own large-scale plans.

One such is the little Oak Bush-cricket. One turned up at home, unfortunately dead. It had flown into an open window attracted by the light but hadn't been able to find its way out again. They live high in the tree canopy, so it's not surprising that we don't usually notice them, and they feed on plant material and also small, soft-bodied invertebrates such as aphids. They are an attractive, brilliant lime green colour with a yellow-orange dorsal stripe, and their long antennae mark them as crickets rather than grasshoppers. The female has a long, upward curving ovipositor, with which she will lay her eggs round about now in tree bark. The young (nymphs) will hatch next June.



*The Oak Bush-cricket, only in grey in this instance.*

Right now I'm preparing for a visit from a local Headway group, whose members have

survived strokes or head injuries. Their trips to the farm are good fun but also have an educational element, bringing them into contact with the landscape and wildlife of Wyre. Their visits earlier in the year didn't provide the right weather for a 'bug hunt' so I'm hoping that some sunshine will encourage them to venture into the hay field and that some interesting invertebrates will show up too! We'll be sweep-netting in the long grass and also shaking low tree branches to see what falls off. In the past we've had a good 'bag' of spiders, flies, plant bugs, shield bugs and weevils from the latter. The weevils are a group of beetles with a long beak or rostrum on their heads to allow them to bore into their food (in this case, acorns) and in the female it is longer so that she can drill right inside the acorn to lay her egg, or eggs. The larvae eat the acorn and bore a way out once it has dropped to the ground in the autumn.

I'll be very pleased to find weevils on our 'safari'. Wyre has at least 130 different species, and although I'm not good at identifying them I think they're cute and I'll be happy that they are still part of our forest ecosystem.



*The Acorn Weevil, its rostrum much in evidence.*

Linda Iles



## Grainger Jones your local independent financial adviser

Grainger lives in Cleobury Mortimer giving the residents and surrounding areas a dependable financial planning service.

- **Wealth Management**
- **Retirement Planning**
- **Investments & Savings**
- **Family & Business Protection**

An initial consultation is available at no charge

To book an appointment or just have a chat, please contact Grainger below.

tel: 07974 100089

email: [grainger@meridenfp.co.uk](mailto:grainger@meridenfp.co.uk)

website: [www.meridenfp.co.uk](http://www.meridenfp.co.uk)



Bagginswood, Cleobury Mortimer,  
Nr. Kidderminster, Worcs. DY14 8NB  
Telephone: 01746 718732

### Heath Farm Meats, Bagginswood

#### Opening Hours

Wed 8am to 5.30pm, Thurs 8am to 7pm, Fri 8am to 5.30pm, Sat 8am to 12.30pm

#### Straight from Our Farm to Table

We rear & sell all our own beef, pork, lamb & mutton through our shop on farm.

We also make our own flavoured sausages, burgers, home cured bacon, gammon etc. No order to large or small.

Hams ● All Poultry ● Honey ● Mawley Milk & Cream ● Ashley's Cakes & Bread ●  
Jams ● Eggs ● Cheeses ● Apple Juice ● Potatoes ● Meat Pies ● Sticks & Logs

Telephone 01746 718732 with your order to arrange a date & time for collection



## TURNERS GATES

bespoke sizes at standard prices



A small family run business specialising in quality wooden gates to suit all entrances.

Visit our website: [www.turnersgates.co.uk](http://www.turnersgates.co.uk)

Drop us an email: [turnersgates@outlook.com](mailto:turnersgates@outlook.com)

Or give us a call on: 01299 270 965







The first month in Parliament has been a whirlwind. First was the State Opening of Parliament where the King delivered a speech setting out the new government's agenda. While I welcome the decision to prioritise growth, little was said about how government will address the needs of rural communities like ours in South Shropshire. So, I called on the government to be more ambitious by giving us the investment we need to improve infrastructure and public services. On which note, I was delighted to receive confirmation that the £312 million secured for the Shropshire hospital transformation programme will be delivered in full - with enabling works having begun in July.

The Chancellor then made her first economic statement, which delivered more challenging news. This included the decision to remove winter fuel payments from those not entitled to means-tested benefits like Pension Credit. This was very disappointing. 24,824 people in South Shropshire benefitted from the payment last year, which helped with the cost of energy bills during the colder months. I have now launched a campaign to increase the uptake of Pension Credit.

Closer to home, I have enjoyed getting out and about with events such as Atcham Duck Race, Burwarton Agricultural Show, Chelmarsh Fete, and Church Stretton Fun Day. I am also grateful to the hundreds of residents who have already written to me about local issues. In July, I received a

concerning notification from the Post Office that more services were being stepped down affecting areas such as Clunton and Clunbury. Having raised my concerns with the Chief Executive of the Post Office, I am delighted that the decision has been reconsidered and that mobile services will remain available.

Meanwhile, I have successfully persuaded Forestry England to extend the deadline on their consultation to turn farmland at Picklescott into a new woodlands. I know many residents near Church Stretton and beyond have reservations and concerns about this proposal, so I have encouraged them to take part in the consultation. I am also eager to address speeding problems at key hotspots like the A458 between Morfe and Six Ashes where residents want the nationally set speed limit replaced with a locally set speed limit, which recognises how the neighbourhood has developed in recent years and now requires a lower speed limit to protect pedestrians. I have asked Shropshire Council to review the situation to see how these safety concerns can be addressed.

Although rural roads carry 44% of road traffic, they account for 59% of road fatalities. So, I want more action to be taken to tackle these issues. At the same time, I want it to be as easy as possible for residents to get around South Shropshire. That's why I have called on the government to keep fuel duty frozen when it delivers its first budget in October. The decade-long freeze has saved drivers an average of £1,900. With over two thirds of residents relying on a car or van to get to work in Shropshire, it is vital that consumers get a fair deal on fuel prices. I have also called on government to continue the 'Get Around for £2' Bus Fare Cap, introduced by the last government to help people facing cost of living pressures save on everyday travel costs. In rural areas, bus fares dropped by almost 11% between September 2022 and September 2023. In the build up to the Budget, I will continue to campaign so that the government invests in rural areas like ours. That way we can build a better Shropshire for all.

## Mark Pearce

Landscape, Design and Rustic Garden Furniture

- Fencing
- Patios
- Drives
- Decking
- Garden Sheds
- Summer Houses
- Fence Panels
- Log Stores



And Much More

Top Quality Fully Treated Timber Products

Mobile: 07875425028

Tel: 01746718404

## Robert Bradley Logs

07794 798616



*Seasoned Firewood, Hardwood,  
Softwood or Mixed loads of logs.  
Free Local Delivery*



Fresh milk and cream from  
Cleobury Mortimer

[www.mawleytownfarm.co.uk](http://www.mawleytownfarm.co.uk)

01299 270359



**CAROLE CLAYTON**

INDEPENDENT FUNERAL CELEBRANT

07971 543790

[celebrant@preciousmemoriescelebrant.net](mailto:celebrant@preciousmemoriescelebrant.net)

Find us on Facebook  
[@preciousmemoriescelebrant](https://www.facebook.com/preciousmemoriescelebrant)

UK Enterprise Awards  
Funeral Celebrant of the  
year 2023 (Worcester)

Shropshire, Herefordshire &  
Worcestershire.



**Cleobury Mortimer Benefice**  
**Church services throughout the Benefice in August**

**St Mary's Cleobury Mortimer**

Sunday 1<sup>st</sup> September: 10.00am Family Benefice Eucharist  
Sunday 8<sup>th</sup> September: 8.30am Said Eucharist  
10.00am Parish Eucharist with Bishop Richard  
Sunday 15<sup>th</sup> September: 10.00am Parish Eucharist  
Sunday 22<sup>nd</sup> September: 10.00am Parish Eucharist

Every Wednesday: 10.00am Eucharist  
Every Thursday: 10.00am – 11.30am: Drop in at St Mary's. Drop in for a free cup of tea or coffee.

***Beer Festival: 27<sup>th</sup> September 5.00-9.30pm & 28<sup>th</sup> September 12.00pm-9.30pm.***

**St Michael and All Angels', Hopton Wafers**

Sunday 15<sup>th</sup> September: 9.30am Service of the Word  
Sunday 29<sup>th</sup> September: 9.30am Eucharist – Harvest & Patronal

**St John's, Doddington**

Sunday 15<sup>th</sup> September: 3.00pm Evening Prayer

**All Saints', Neen Sollars**

Sunday 1<sup>st</sup> September: 11.00am Village Worship  
Sunday 8<sup>th</sup> September: 11.00am Village Worship  
Sunday 15<sup>th</sup> September: 11.00am Village Worship  
Sunday 22<sup>nd</sup> September: 11.00am Village Eucharist  
Sunday 29<sup>th</sup> September: 11.00am Benefice Eucharist

**St George's, Milson**

Sunday 15<sup>th</sup> September: 11.00am Parish Eucharist

**St Mary's, Neen Savage**

Sunday 15<sup>th</sup> September: 9.00am Parish Eucharist (BCP)

**St John the Baptist, Kinlet**

Sunday 8<sup>th</sup> September: 11.15am Parish Eucharist (BCP)  
Sunday 22<sup>nd</sup> September: 6.00pm Evening Prayer (BCP)

**Leadership Team:**

Rector: Reverend Prebendary Ashley Buck: 07477 165602  
Curate: Reverend Sarah Lupton  
Church Office: Open Tuesday & Thursday 8.00am – 2.00pm Email: [cleoburychurch@hotmail.com](mailto:cleoburychurch@hotmail.com)  
Website: [www.cmbenefice.com](http://www.cmbenefice.com)





**FLOWERS by FIONA**  
**07875-077941**

**SPECIAL OCCASIONS**  
**WEDDINGS & FUNERALS**

**FBK ~ Instagram ~ WhatsApp**



Soft furnishing and  
Interior Design Services

**Masquerade**  
Fabrics Limited

**01299 271 680**

36 High Street Cleobury Mortimer near Kidderminster  
Worcestershire DY14 8DQ

**Retailers for Sanderson, Harlequin, Monkwel**

**Crowson and many more...**

**Comprehensive design, measuring and fitting service.**

# TDC CARPENTRY SERVICES

Fully insured qualified professional  
Excellent workmanship and quality customer care  
From hanging doors, fitting kitchens to bespoke projects

**Tim Clare - 07890 519980**



**AMY'S FOOT HEALTH**  
**FOOT HEALTH PRACTITIONER**  
**AMY FRANCE DipFHP, MCFH**

Services include:

- Routine Nail Trimming
- Callus Reduction
- Corn Treatment
- Fungal Infection Treatment
- Cracked and Dry Heal Treatment
- Thick Nail Reduction
- Ingrown Nail Treatment
- Cream and Massage
- Medical Pedicure
- Pedicure
- Lower Leg and Foot Massage

MOBILE: 07925 236221 ASK FOR AMY OR LEAVE A MESSAGE

## HANDY MATT

**FOR ALL THOSE JOBS YOU NEED DOING OR NEVER GET DONE AROUND THE HOME AND GARDEN!**

**CALL ME TODAY AND GET THEM DONE.**

**RESTORATION, ROOFING, GUTTERING, BRICKWORK, REPOINTING, CARPENTRY, INSULATION, DECORATING, TILING, FLOORING, DAMP PROOFING, STOVE FITTING, GROUNDWORKS, LANDSCAPING, PATIOS, FENCING, GARDEN MAINTENANCE.**

**TEL: 07731 459631**



**BAGGINSWOOD**

Bagginswood, Cleobury Mortimer,  
Nr. Kidderminster, Worcs. DY14 8NB  
Telephone: 01746 718732

### Heath Farm Meats, Bagginswood

Opening Hours

Wed 8am to 5.30pm, Thurs 8am to 7pm, Fri 8am to 5.30pm, Sat 8am to 12.30pm

#### Straight from Our Farm to Table

We rear & sell all our own beef, pork, lamb & mutton through our shop on farm.  
We also make our own flavoured sausages, burgers, home cured bacon, gammon etc. No order too large or small.

Hams ● All Poultry ● Honey ● Mawley Milk & Cream ● Ashley's Cakes & Bread ●  
Jams ● Eggs ● Cheeses ● Apple Juice ● Potatoes ● Meat Pies ● Sticks & Logs

Telephone 01746 718732 with your order to arrange a date & time for collection

## THE FESTIVAL AT THE EDGE

I'm a fan of this festival with its determination to do things differently from others. Maybe I should be getting out more, but I don't know other places with a range of music both instrumental and vocal, poetry, dancing and just plain talking that you can wander through the site and stop to listen to whatever catches your ear or imagination. All in a quite beautiful piece of English countryside.

But it didn't attract a big audience this year and there seemed to be fewer trade stalls to tempt your pocket or wallet. I went there with my lady Tina, who had agreed to demonstrate the ancient art of what we call belly dancing and to instruct anyone daring enough to try. When she gets the traditional music going and begins to gesture and girate in a stunning costume, she makes passers-by stop and look. And when she invited onlookers to join her, there were nearly as many men as women, to my surprise. The surface of the grass was not smooth; what you'd expect when walking about a rural estate, but hard work in dancing shoes when you moved across the minor hummocks.

But Tina persevered and the reception from ladies who had a serious interest was good to see. Some of the men left soon after trying, others kept at it, recognising that it's a discipline that needs

concentration if you want to advance.



*Tina struggled with an uneven surface, not ideal for dancing.*

When the dancing ended, we wandered around and gave time to music and a little poetry before the effort of dancing began to show in the lady's pace. We said our goodbyes and headed for home. I do fervently hope that this festival recovers its early appeal and the crowds come again.

## THE READING GROUP

A classic read, 'The Mayor of Casterbridge' by Thomas Hardy this month's book, was well received. An easy read and full of surprises, it was likened to an 1886 version of EastEnders or Dallas. Whilst under the influence of alcohol, Michael Trenchant sells his wife and young daughter to a stranger for five guineas. When sober he regrets this and decides to stop drinking for twenty-one years. Going into business

with Donald Farfrae a passing traveller, Michael becomes a wealthy man and rises to become Mayor. All kinds of adventures take place when his ex-wife Susan turns up with eighteen year old Elizabeth Jane, their daughter? A past acquaintance Lucetta also appears in the town. A falling out with his partner Donald causes additional problems with the company. Maybe a few too many coincidences. We spoke about the ladies in the book and how none of them achieved their full potential and whether things had changed since then, sadly not completely.

Back to the present this month, with 'The Days of Abandonment' by Elena Ferrante, possibly controversial. We shall find out on September 16<sup>th</sup> when we meet at the library.

Deana Kimber

## PARISH HALL BOXING CLUB

The Club will be starting up again in the Autumn. We are looking to introduce Kick Boxing and are in discussions with new coaches. Everyone who has been to the Club will be contacted, but watch this space for more news. If you want to be added to the contact list, please mail [robert@cleoburyparishhall.uk](mailto:robert@cleoburyparishhall.uk)

## SILLY BIT

**Anxious airline passenger:**  
"How often do planes crash?"

**Airline stewardess:**  
"Just once."





**BROADCAST**



**The Royal Opera: The Marriage of Figaro**, Tue 10 Sep, 6.30pm

**THROWBACK THURSDAYS**



**The Shawshank Redemption (15)**, Thu 12 Sep, 7pm

**BROADCAST**



**National Theatre Live: Prima Facie**, Fri 13 Sep, 7pm

**LIVE MUSIC**



**King Pleasure and the Biscuit Boys**, Sat 14 Sep, 7.30pm

**FILM**



**Beetlejuice Beetlejuice (Age tbc)**, 20, 23, 24, 26 Sep, 7pm

**LIVE MUSIC**



**The Killerz**, Sat 21 Sep, 7pm

**LIVE MUSIC**



**Lionel: The Music of Lionel Richie**, Fri 27 Sep, 7.30pm

**LIVE MUSIC**



**Counterfeit 70s**, Sat 28 Sep, 7.30pm

**LIVE SHOW**



**Jenny 'The Vixen' Ryan: Out Of The Box**, Sat 5 Oct, 7.30pm

**01584 811 442**



**www.regaltenbury.co.uk**



**@RegalTenbury**

REGAL TENBURY, 49 TEME STREET, TENBURY WELLS, WR15 8AE | Reg Charity No. 1148555

CLEETON ST MARY AND SILVINGTON VILLAGE HALL

AVAILABLE FOR PRIVATE HIRE

PARTIES-CHRISTENINGS-FUNERAL CELEBRATIONS-  
COMMUNITY EVENTS

CAR PARKING-KITCHEN-OUTDOOR AREA

CALL US: 07908 791262

EMAIL: cleetonvillagehall@gmail.com

Facebook: cleetonvillagehall



## CLOWS TOP GARDEN CLUB

This month we are welcoming back Simon Gulliver, who came to us before with a talk entitled "Around the World in Eighty Plants"

Simon studied at Pershore College of Horticulture, and later at Edinburgh Botanical Garden. He has also spent time at RHS Wisley and Birmingham Botanical Garden. He is currently Gardens Advisor for the National Trust. The title of his talk this time is "Colour Through the Seasons"

The Flower of the Month competition has only two more months to go, so do not forget your special bloom. Remember also your magazines to swap.

Doors open at 7pm for the speaker at 7.30. New members are always welcome. Just come along and enjoy the tea/coffee, biscuits and gardening chat.

See you on Wednesday, September 28th.

*Judith Lawson*

## FLICKS IN THE STICKS

We will be showing 'Hidden Figures.' Dorothy Vaughan, Mary Jackson, Katherine Johnson, and Christine Darden were good at maths...really good. They participated in some of NASA's greatest successes, like providing the calculations for America's first journeys into space. And they did so during a time when being black and a woman limited what they could do. But they worked hard. They persisted. And they used their genius minds to change the

world. Tickets £5. Bar, tea and coffee, September 21st, 7.00 for 7.30.

## CLEOBURY W.I.

Despite August being a quieter month on our calendar, members have enjoyed getting together for a couple of wonderful social events. Thursday 8<sup>th</sup> found us leaving a sunny Cleobury Mortimer to try out the newly opened Brewe Clee Hill coffee house which offers a place to meet, drink, eat homemade cakes and light bites. Although the weather had taken a turn for the worse up on the hill, the average group of 12-14 members meeting for coffee grew to 20 members curious to try out the new venue. No-one was disappointed as a varied selection of fayre was chosen and eagerly devoured.

August is the month that we enjoy a social gathering at the President's house for the Summer Garden Party. Judy Sant has hosted the event for many years providing the members with a lavish spread of cheeses and breads, whilst members contribute savoury dishes, salads and desserts to make a wonderful supper. The weather was near perfect to sit out, enjoy good company and the beautiful garden.

Upcoming WI Activities  
September's Meeting will be held on Tuesday 10<sup>th</sup> September @ 7.30pm. Our guest will be Allan Wilson speaking on "Save our Shropshire", guiding us through the science of climate change and how we can contribute to reduce our carbon footprint in the home.

This talk is open to visitors for a donation of £5.

The September Coffee Morning will be held at the Burford House Garden Centre near Tenbury Wells @1030am, giving the opportunity to enjoy the last throes of summer or pick up a few things for Christmas for those keen on forward planning!

Please contact Judy on 01299 270983 or email [judysant10@gmail.com](mailto:judysant10@gmail.com) for further information on joining our WI. Check out the Cleobury Mortimer WI Facebook page. *Sally*

## MACMILLAN COFFEE MORNING, CLEETON ST. MARY

The Knit and Natter Group are holding this event on Saturday 21st in Cleeton village hall to raise funds for Macmillan Nursing. Starts at 10.00, ends about 12.00.

Most of us know someone with that awful disease and feel helpless to know what to do. Macmillan provides nurses to help and advertise that they "Do whatever it takes for people living with cancer". A fount of knowledge and useful information.

Everyone is welcome to join us and share the fun. Parking is provided near the village hall and Cleeton is a lovely place to visit, away from main roads amid Shropshire scenery. Postcode DY14 0QU, it's about two miles from Hopton Wafers. Come and enjoy and join the drive to support the wonderful work of Macmillan.

*Clare Caldicott*

# SHROP SWEEP

## CHIMNEY SWEEPING

- Rotary & Manual Chimney Sweeping
- Great Customer Service
- HD Camera Inspections
- Certificates Provided
- Smoke Testing
- Competitive Rates
- Trained by National Assoc of Chimney Sweeps
- Availability to fit all schedules
- Professional, Clean & Efficient

Contact Mark on: 07538 533865  
Email: shropsweep@gmail.com

## WESTONS

WILLS AND PROBATE

Come and see us at our riverside offices located in the heart of Bewdley at 18 Severn side South.

With over 30 years' experience, Mandy and her team offer a personal and professional service specialising in will drafting, lasting powers of attorney, deputyship applications and probate.

Previous clients feedback has included the following comments:

"I've used Mandy at Westons Wills and Probate numerous times over recent years covering all aspects of her expertise. Her guidance on the way forward and solutions to issues that she has suggested has been excellent. She is extremely communicative and responsive, and handles difficult situations with compassion and empathy. I have happily and confidently recommended her services to everyone I know that would benefit from her services."

"Mandy Weston of Westons Wills and Probate is a very professional and knowledgeable person. She has now become my 'go to' legal adviser and has taken on many legal tasks for me and my family. Wills, Probate, Inheritance Tax and Powers of Attorney. I trust her judgement and experience to act in mine and my family's best interest. I would highly recommend her legal services to anyone."

**Tel: 01299 405873**

*"Great expertise and a friendly professional manner"*

Contact Mandy Weston Phone 01299 405873 Mobile 07931 411733  
Email enquiries@westonswillsandprobate.co.uk Website www.westonswillsandprobate.co.uk  
Address 18 Severnside South, Bewdley, Worcestershire DY12 2DX

## N.R. Evans Landscaping

- Grass cutting
- Strimming
- hedge cutting
- garden and site clearance

- Fencing, including:
- Panel fencing
- Post and rail fencing
- Picket fencing
- Stock fencing

domestic and commercial customers welcome

Call for a chat on 07535 902847

Email: nrevansgardenmaintenance@gmail.com Facebook: N.R.Evans Garden Maintenance





THE AGENCY UK

# Local, personal *and* dedicated Estate Agents

## THE LATEST FROM CORAL & TOM...

The August market has shown signs of improvement following the positive news of the first Bank of England base rate cut for four years, giving home movers increased confidence in the market. The traditionally quiet month of August has seen a 16% increase in sales being agreed compared to this time last year and a 5% rise in new sellers coming to the market against August 2023.

These better conditions are helping to set up a positive autumn market, and the resultant increase in activity.

Mortgage lenders have increasingly been cutting mortgage rates being offered with Barclays, HSBC and TSB are among the latest at the time of writing, increasing the confidence of buyers and sellers looking to move. While this optimism is justified, the rates available are still high comparably to rates offered a few years ago meaning more cuts will be required before affordability is greatly improved.

The Autumn market is setting up to be a positive one, but sellers must be wary of strong competition and buyers still being stretched, meaning they should come to the market with competitive pricing for their home to secure a sale.



If you want to talk about the market and how it's affecting your property value or about an impending move, please do not hesitate to contact us for a chat.

**Coralie Walrond** MNAEA MARLA

**Tom Jackson** MNAEA

📞 **01562 541053**

✉ [kidderminster@theagencyuk.com](mailto:kidderminster@theagencyuk.com)

Scan code to visit  
our website



Church Street, Cleobury - £190,000

*Are you searching for a characterful home in the heart of Cleobury Mortimer? How about views of the Church? Period features throughout? Well, this one is a must view for you!*





**Doddington Lodge**

*Residential Care Home*



# living with us at Doddington Lodge

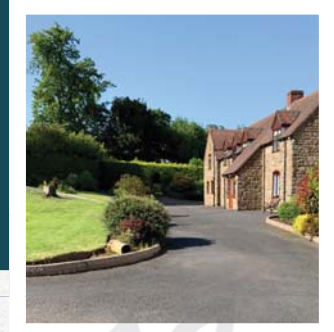
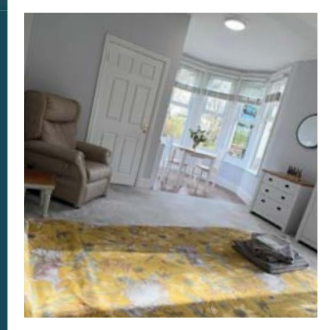
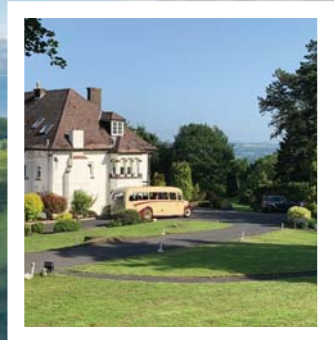
*Care and Warmth at its Heart*

We would like to welcome you and your family to Doddington Lodge, our newly renovated, privately owned residential and dementia care home in the historic, tranquil hamlet of Doddington, Nr Cleobury Mortimer. Located on the beautiful Worcestershire & Shropshire boarder, providing picturesque views from every aspect of our home.

With a modern bistro dining room and bar with a delicious daily menu created by our accomplished chef. Individually designed spacious double rooms, allowing couples to stay together or beautiful single rooms all with en-suites and stunning countryside views. Even a hairdressing salon for a little pampering to provide a place of well-being.

Doddington Lodge is a place where friendships are made and special moments are shared. We organise many fun activities that everyone can get involved with, whether that's a sing along, arts and crafts, collecting fresh veg from the allotment or just simply helping each other with a crossword in our daily newspaper. Each day is different, we certainly have many happy moments...

Our home is a loving community and family, where you can consider Doddington Lodge a home away from home. We will provide you with all the key information, guiding you through every step of the process, whether you are staying with us for a short or long stay.



Come along!  
Coffee morning  
on Friday 13th  
September 2024



Join us for a warm cup of cheer and plenty of laughs at our monthly Doddington Lodge Coffee Mornings!

Every 2nd Friday of the month, come together with residents, family & friends over tea or coffee. Enjoy freshly baked cakes as well as the Doddington Lodge monthly raffle.

For only £2.50 per person – including your beverage and slice of cake – join us for our get-together on Friday, September 13th, 2024, from 10 am until midday.

We look forward to seeing you!

[www.doddingtonlodge.com](http://www.doddingtonlodge.com) | E: [enquiries@doddingtonlodge.com](mailto:enquiries@doddingtonlodge.com) | T: 01584 707084

Doddington Lodge, Residential Care Home, Doddington, Nr Cleobury Mortimer, Shropshire DY14 0HJ.



*Remember to follow us*



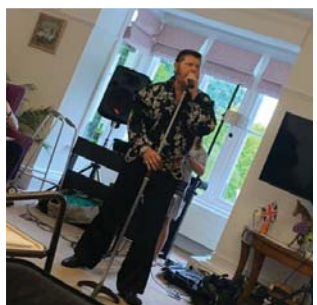


## A ROCK 'N' ROLL DAY AT DODDINGTON LODGE!



We always love the exciting activities and events our amazing Activity Coordinators plan for us at Doddington Lodge. This month has been filled with lots of laughter and fun times.

One of the standout events was our Rock 'n' Roll Day, which was an absolute blast! Our residents enjoyed a special performance by the one and only Elvis, played brilliantly by Carl Fisher. Carl's talented daughter, Molly, took charge of the sound engineering. The music brought back wonderful memories, filling the room with the sounds of the past and everyone sang along with big smiles on their faces.



We all enjoyed a delicious fish and chips lunch, prepared by our amazing Chef Sarah, which was the perfect way to end the day's event.

## DODDINGTON LODGE MONTHLY COFFEE MORNING

Thank you to everyone who joined us for our Doddington Lodge Coffee Morning. It was fantastic to see everyone! We enjoyed lots of delicious home made cakes, cups of tea and coffee. Plus our fantastic raffle.

Don't forget to save the date for our next Coffee Morning, which will be held on the second Friday of the month, Friday, September 13th, 2024. We look forward to seeing you there! We love these opportunities to catch up with our friends and neighbours.



[www.doddingtonlodge.com](http://www.doddingtonlodge.com) | E: [enquiries@doddingtonlodge.com](mailto:enquiries@doddingtonlodge.com) | T: 01584 707084

Doddington Lodge, Residential Care Home, Doddington, Nr Cleobury Mortimer, Shropshire DY14 0HJ.



*Remember to follow us*

## CARTER'S ANTIQUES



We are looking to purchase all manner of antiques, jewellery, coins, medals and curiosities.

For a free valuations kindly telephone  
**John Carter: 07779 311792**  
Or email: [johnbarney743@gmail.com](mailto:johnbarney743@gmail.com)

## Alan Smith Aerials

### Digital TV Installations.

**Freeview** aerials fitted and distributed around the house.

**Freesat** box, dish, and cable supplied and fitted. One off payment, **No contract or subscription required.**

Extra points, Repairs, New fits, Set ups, Multi room.

All work is carried out by a **Local**, fully qualified and insured installer.

**01299 270007 or 07970 675728**



## Natalie Taylor

Dip CFHP MPS Pract.

### Specialist Foot Health Practitioner

Specialising in:-

- In-growing toenails
- Fungal infections
- Nail trimming
- Verrucae
- Calluses
- Corns

All from the comfort of your own home.

If you would like to make an appointment, please call on **07779 113982 or 01584 890112**



## COUNTRY SKILLS

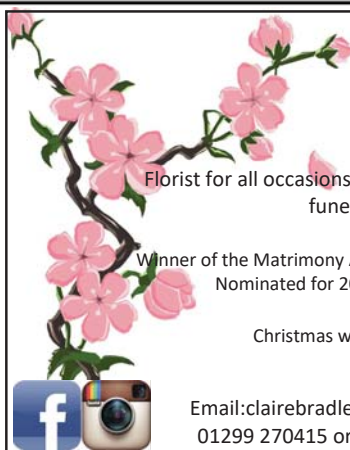
CPCS/NPTC Approved—fully insured

- Outside Renovation
- Tree Surgery, Hard Landscaping
- Slabbing and Fencing
- Decking, Roofing
- Contract Mowing

Call for a free quotation

R. Price & Sons

Mobile: 07967 140720 Email: [roger@country-skills.co.uk](mailto:roger@country-skills.co.uk)



## Claire Bradley Floral Designs

Florist for all occasions, specialising in wedding and funeral flowers

Winner of the Matrimony Award 2020 Best Wedding Florist  
Nominated for 2021 Matrimony Awards

Christmas workshops available



Email: [clairebradley1@icloud.com](mailto:clairebradley1@icloud.com)  
01299 270415 or 07980 580770



## SINGING LESSONS

**Professional singer and experienced teacher recently moved to this area**  
**Vacancies available**  
**All styles, ages, standards welcome**

**Contact Angela Kazimierczuk on**



### Domestic oil-fired boiler breakdown & maintenance services.

27 years' field-service experience with leading UK boiler manufacturer Worcester Bosch.

**Donovan Taylor**

**Tel: 01299 828670 or 07807 837040**

[donovan.taylor@sky.com](mailto:donovan.taylor@sky.com)

[www.greenstar-boiler-repairs.com](http://www.greenstar-boiler-repairs.com)

Caring about your environment and providing an honest, professional & reliable service you can trust



# G W

## Tree Stump Removal

Commercial and residential.

Fully insured, qualified and professional.

Your property left neat and tidy.

Happy to give quotes with no obligation.

Ring Sam: 07787095668 or 01299832549

Email: [sam@gwstumpremoval.co.uk](mailto:sam@gwstumpremoval.co.uk)



### Ch-Ch-Ch-Changes

It's a time of change. Or perhaps more accurately, it's a time when everything *feels* like it's changing except for me. The weather, for instance, has become more unpredictable than a toddler in a toy shop - one minute, the sun is shining, and the next, it's as if the sky has decided to tip a bucket of cold water on your head just to keep things interesting. Pity the poor farmers trying to find a dry spell for harvesting. I can almost hear them muttering under their breath, trying to schedule around a forecast that seems more like a game of roulette than meteorology.

The garden, too, is hurtling towards transformation at a record pace. No matter how quickly I dart around with my secateurs, snipping and deadheading in a frenzy, the blooms are fading faster than I'd like. It's as if the entire garden has decided to join a synchronised slump towards Autumn, and I'm left wondering if I blinked and missed summer altogether.

And don't get me started on the weeds. Why is it that while everything else in the garden seems to be on the decline, weeds refuse to wane? They pop up with a vigour that would be admirable if it weren't so bloody annoying.

The grass is just as bad.

Same goes for the molehills.

The thing is that it's been a hectic summer, or at least that's what I keep telling myself as I glance at the plants still sitting in the greenhouse. They were grown from seed with the best of intentions but never quite made it to the beds. Next year, I'll be more organised (honest). I'll have a detailed colour-coded Gantt chart to keep me on the straight and narrow. But then again, I said that last year, too. And the year before that.

Alas, it's not just the garden changing at breakneck speed. Our home life is undergoing a transformation of its own. Last year, we experienced that bittersweet rite of passage when we dropped our eldest off at university for her first year at Keele. There were tears, of course, mostly from us parents, but the worry quickly faded as she blossomed in her new environment. She's returned home semi-regularly, lured by the promise of home-cooked meals, free laundry service, and long-overdue hugs.

And now it's my son's turn. With a solid haul of A-levels under his belt, he's packing up his paints and canvases and heading off to Loughborough University. Our calendar is suddenly filled with accommodation panics, trips to Ikea, and attempts to teach him how to cook something other than pasta. And no, Pot Noodles don't count, despite his passionate arguments to the contrary.

I'm incredibly proud of them both, though I know at this point you're probably reaching for something to vomit into. Well, dear reader, deal with it—I don't care. They're a pair of absolute marvels. Of course, this also means that my wife and I are now entering the dreaded "empty nest" phase of our relationship. She gets 100% undiluted me for the next few months, and I can already see the fear in her eyes, like she's about to step onto a roller coaster she's not entirely sure she wants to ride (insert your own jokes at will).

But as the great F. Scott Fitzgerald once said, "Life starts all over again when it gets crisp in the fall." So here's to change, to new beginnings, and to the hope that the plants might just make it out of the greenhouse next year.

*Simon*



## TWS Kidderminster, are a premium home improvement company, offering bespoke windows, doors, and roof systems with a high-quality finish at competitive prices.

With over three decades in the industry we pride ourselves on offering extensive knowledge and a service you can rely on.

As comprehensive home improvement specialists, we take pride in installing a wide range of double-glazed products. TWS work with industry leaders and our employed fitters are CERTASS registered.

Investing in our products will not only visually enhance your property but also offer the industry's best in thermal performance technology and high security. All of our products are made to measure and can be customised in an array of colours and finishes to suit your home.

Walk in anytime! The showroom is open 6 days a week including 9am to 4pm on Saturdays, you can even bring your dog as our showroom is dog friendly too with fresh water, toys and treats to hand!

[www.twswindowsanddoors.co.uk](http://www.twswindowsanddoors.co.uk) [sales@twshq.com](mailto:sales@twshq.com) 01562 822855 Unit 5, Lupin Works, Worcester Rd, Kidderminster DY10 1JR



**CM BESPOKE CARE LTD.**



**CM AURICULAR HEALTHCARE  
SERVICES FREE  
FOR ALL CLIENTS!**

Ear Health Checks  
Wax Removal  
Hearing Screenings  
+ Much More

**Ground Floor Office Suite,  
Upper Baveney Park,  
Cleobury Mortimer,  
Kidderminster,  
DY14 8LF**

**WE CARE**  
Providing The Following Range of Services:

Care In Your Own Home  
Nursing Led Care  
Palliative Care  
Personal Care  
Adult Social Care  
Mental Health Specialism  
Learning Disability Care  
Young Adult Care  
Social Calls  
TDDI  
+ Many More

**PROVIDING CARE  
& SUPPORT**



**Tel: 01746 718816**

**Email: [cmbespokecare@outlook.com](mailto:cmbespokecare@outlook.com)**



**/CMBespokecare**



**/cmbespokecare**





## REVIVE BATHROOMS

COMPLETE BATHROOM INSTALLATION SERVICE

**07971 361901 or 01299 832484**

**Complete Bathroom Installations**  
**Bathroom Refurbishment or Repairs**  
**Wet Rooms**  
**Professional Wall and Floor Tiling**

For a quality and guaranteed service, call Stuart for a free quote  
 Highly Recommended / References available - see my reviews on [www.freeindex.co.uk](http://www.freeindex.co.uk)

**FOR THE BATHROOM YOU DESERVE!**





## Elite Sweeps

Professional Chimney Sweep

## & HETAS Stove Installer

- ✓ Prompt, reliable & friendly service.
- ✓ Cows and Chimney Pots fitted.
- ✓ Fully qualified and fully insured.
- ✓ Guild certificates issued after every sweep.
- ✓ HETAS Approved Installer.

**Call Eddie**

**Tel. 01299 382222 / 07895 612915**

[www.elitesweeps.co.uk](http://www.elitesweeps.co.uk)





## Hollywaste Holiday Lets


Our 2 bedroom (ensuite) cottage, sleeps up to 6 adults, situated in Hollywaste, Cleobury Mortimer. Fully equipped kitchen, open plan living room with log burner, dining area and downstairs WC. Includes Freesat and fast WiFi. There are enclosed & open decking areas outside, to take advantage of the beautiful countryside views, and a grassed area for outdoor games.

Open all year round and welcomes adults, children, 1 large dog or up to 2 small dogs


Discount of 10% available for locals simply quote "keepitlocal" at the checkout

Events we can accommodate:  
 Staycations, Pamper weekends, Shooting weekends, Wedding venue, Minimoons stays, Stargazing weekends,  
 Cookery weekends & events, Camping and caravan pitches are also available!  
 If you're interested in hiring our space or land for any event and time frame.

Tel: 07962 151322 Email: [hollywasteholidaylets@gmail.com](mailto:hollywasteholidaylets@gmail.com) FB: <https://www.facebook.com/HollywasteHolidayCottage>  
 Website: <https://hollywasteholidaylets.squarespace.com> for more information



### Glenys Turpin Reflexology



Reflexology is a non-invasive form of complementary medicine. It involves a method of treatment in which pressure is applied to the feet or hands to treat a wide range of ailments and is effective in promoting deep relaxation and well-being.

Reflexology does not claim to cure, diagnose or prescribe. It may be used alongside orthodox medicine and may be helpful with stress related symptoms and other conditions.

For more help and information contact Glenys...

5 New Road, Cleobury Mortimer. [glenyurp@hotmail.co.uk](mailto:glenyurp@hotmail.co.uk) 07763 332759

Diploma of The Bayly School of Reflexology, Member of The British Reflexology Association

## MOBILE FOOT HEALTH CARE

**Providing a thorough nail and foot care treatment in the comfort of your own home.**

**Registered and insured practitioner.**

**STACEY WILLIAMS FHP Dip RFHP**





## CURRENTLY FOR SALE

Listed with Blacks Brokers Ref: 8805

We have a great range of stock! Competitive prices AND We are open 6 days  
Pop inside before you pop online!

**18 High Street, Cleobury Mortimer**

**Tel: 01299 489590**

**Like our Facebook page CLEOBURRS**

## BODEN & SON Milk est. 2013

Not only do we deliver fresh Mawley Milk from the farm to your doorstep,  
we also deliver: cream , eggs, butter, fruit juice & now.....



Ashley's fresh bread

**Telephone: 01584 891550**

**EMAIL [boden6400@gmail.com](mailto:boden6400@gmail.com)**



## Hobbs Building Services

EST 25Years.

A Total Plastering, Maintenance and Building Service for your home,  
business and outbuildings.

Insurance work undertaken

Emergency call out service for general plumbing, roofing, boarding up damaged doors and  
windows. For a free quote please call;

Ian on; 07967190742

Email: [hobbsbuildingservice@yahoo.co.uk](mailto:hobbsbuildingservice@yahoo.co.uk) Or Call/Text Kelly on; 07790085307

## Rachel Siddall

DipCFHP, MPSPract

Footcare in the privacy of your own  
home:

Nail trimming  
Ingrowing toenails  
Corn removal  
Thickening nails  
Callus reduction  
Verruca treatment  
Diabetic foot care



**07478 007913**

# Cleobury Opticians

NHS & private eye tests ♦ FREE children's glasses

FREE NHS glasses ♦ Home visits



## Opening Times-

<u>Tuesday</u>	9am-1pm 2pm-5pm
<u>Wednesday</u>	9am-1pm 2pm-5pm
<u>Thursday</u>	9am-1pm 2pm-5pm
<u>Friday</u>	10am-2pm
<u>Saturday</u>	9am-1pm

[www.cleburyopticians.co.uk](http://www.cleburyopticians.co.uk)

16 Church Street, Cleobury Mortimer, Kidderminster  
DY14 8BX

Tel: **01299 270012**

Email: [cleburyopticians@outlook.com](mailto:cleburyopticians@outlook.com)



All Aspects of carpentry work undertaken

Level 3 City & Guilds in Carpentry & Joinery, 20 years of experience

Tel: **07854 032750**

Email: [duncpearce1@gmail.com](mailto:duncpearce1@gmail.com)

## Stewart Mumford Architectural Services Bespoke Architecture

Great value personal service backed up with extensive local knowledge, established links with other construction professionals to ensure comprehensive packages specifically tailored to individual needs.

Initial consultation free of charge.

Specialist in Works to Listed Buildings, Affordable Houses, Open Market Houses, House Extension and Alteration, Barn Conversion and Commercial Projects.



T: 01299 271068

M: 07977 921039

E: [office@stewartmumford.co.uk](mailto:office@stewartmumford.co.uk)



## A M Plumbing & Heating

- \*General plumbing
- \*Oftec approved
- \*Bathrooms
- \*Oil boilers
- \*Hot water cylinders
- \*Servicing
- \*Central heating
- \*Power flushing

**Call Today: 07565 181554**



## TOTAL PROPERTY MAINTENANCE

Fireplaces built for multi-fuel burning stoves,  
Plastering, Building & General Maintenance

**Rob Taylor**

Mobile: 07944 074540

Landline: 01299 832734

Email: rptbuilding@hotmail.co.uk

# Quality firewood for sale

We source our wood from a reputable and sustainable source.

Can deliver up to 20 mile radius from Bayton (DY14 9NA).

We can do multiple and large loads.

Please call to enquire on pricing.

**John Edwards 07531025018**



H.C.P.C Number CH22527

## Cleobury Chiropody Janet Manley

Qualified Chiropodist  
MSSCh. MBChA  
BSYA (reflex) REIKI Master

Tele:- 01299-272841

Mob:- 07805-268439

Email: janetpmanley@yahoo.co.uk

2, Tenbury Road,  
Cleobury Mortimer,  
Kidderminster,  
Worcs.  
DY14 8RB

## A Round Of Appaws

Professional Dog Groomer  
C&G Levels 2 & 3 Diploma

Fully Insured

Call or text Jules on  
07368359144

aroundofappaws1@gmail.com



facebook  
Instagram

## A. Farr Painting & Decorating

Give your home a beautiful new look....

Contact:

andyfarr12345@gmail.com 07815 855340

## Lisa Steward Ironing services

Hopton Wafers



Please call: 07581065436 for more information



Chaos recently as three way traffic lights were set up near the Catherton Road with resulting tailbacks and gridlock at busy times. Obviously some important and extensive work going on. Actually, no. An evening examination revealed a small hole— in the pavement. I appreciate that 'elf and safety precautions need to be taken to protect the workforce, especially as so few people actually want to work these days but this does seem a bit OTT.

A similar situation on the A4117 the other side of the Blount which has had 'temporary' lights installed for months now with no signs of any repair activity. Things there are now so bad that the plants that once constituted the verge have now grown halfway across the road. How long before they spread further and shut the road completely?. I can also see why they have started painting speed limits on the road surface – probably because the trees on each side of the road have grown so much they are obscuring the original signs.

Did you enjoy exams? Most of us didn't, but there is now a perfectly acceptable reason: An academic at Sussex University has said that exams are just a way of inflicting colonial bias on marginalised students (that would be me – certainly intellectually marginalised at least). Apparently, even expecting students to use proper English is a hangover from colonialism as not all have been brought up using 'Queen's English'. This has ignited a row with other academics who claim that this approach is itself racist as it assumes a skin colour or different culture means you can't do exams. I wonder who ultimately pays all their salaries – oh, that would be us...

More gender wars at the Olympics with two (questionably) female boxers being allowed to compete even though the World Boxing Association had banned them last

year after they failed a gender test. Interestingly, the WBO is headed by Russia and they know a thing or two about gender manipulation so if they aren't happy, why was this allowed?. By now, you will be aware that they both won the gold medal in their classes. *Quelle surprise...*

An interesting piece in the 'Times' from 100 years ago about a scam which parted social climbers from their cash with false promises of Knighthoods and other honours in exchange for a 'donation'. Thank goodness things have changed, as now when you make a donation, you actually get the Knighthood or seat in the Lords...That's progress!.

It is no secret that the late Queen Mother liked a tipple with a gin and Dubonnet being her favourite but any suggestion that she was an alcoholic is untrue. As the MailOnline commented, she was just said to be a 'devoted drinker' so next time you are chided for excessive alcohol consumption, you have a perfect riposte...

Problems just won't go away for Thames Water with Ofwat, the regulator, having awoken from a 30 year slumber and hit them with a proposed fine of £104 million. This is appealable but most of their investors have already voted with their feet and written down the value of their holdings to zero. It has also been revealed that the Water Minister in the last government was unhappy with releasing figures showing spills had increased by 54% last year. He argued that more monitoring was the reason... (memo to future Ministers: the spills still increased...)

A worrying development with several high value cars having been stolen from Cleobury after the thieves broke into houses to steal the keys. A further attempt was apparently foiled in part to due to the presence of a wheel lock so it seems that old fashioned security can be useful.



Fully qualified electrician and bathroom fitter with over 30 years experience

- Electrical Installations & Repairs
- Bathroom & Kitchen Installations

Call Steve on: 07791 492 951  
[enquiries@selectrical.co.uk](mailto:enquiries@selectrical.co.uk)





**Little Detton**

Home Grown Meats

Cleobury Mortimer  
 DY14 8LW  
 07825030607  
[www.littledetton.co.uk](http://www.littledetton.co.uk)

**Free delivery for orders over £30 within 10 miles**

Rare Breed Beef, Lamb, & Pork, Sausages, Bacon & Gammon, Free Range Chicken  
**See us at the Farmers Market**

## **HIS & HERS**

### **Dog Grooming Parlour**

All breeds and  
 Cross breeds professionally  
 Trimmed and Groomed



**J. A. Guest**  
**Tel: 07790 796 027**

### **Washing Machine Repairs and Sales**

**JULIAN BREAKWELL**  
**Telephone 07791 633 746**  
**Repairs to all makes, including  
 Bosch, Hoover, Zanussi and  
 Hotpoint**  
**NO CALL OUT CHARGE**  
**FIXED LABOUR COST**


## **Ever After**



- Breakfast club
- After school club
- Holiday club
- "Forest schools" outings
- 15hrs education funding
- 24U funding
- Age ranges: 3 months to 11 years

**Day Nursery**  
 Cleobury Mortimer  
 Please contact us on 01299 272 777  
 Or Call in to see us anytime.  
 Friendly, Caring Environment for the Community

## **David Ward firewood**



**Do you need a dependable consistent quality supply of seasoned or kiln dried hardwood and softwood firewood?**

**Cut and split to suit and delivered in breathable 1.2-cubic metre bags, so no need to restack.**

**Small delivery vehicle, fitted with crane, can deliver to most locations and situations.**

**CALL DAVID TO DISCUSS YOUR REQUIREMENTS:**  
**Mobile: 07866 441154**

## **Piano tutor**

**Francis Engleheart**

*All ages — I specialise in teaching adults  
 without previous experience*

*I come to you*

**07710 288526 • [fengleheart@hotmail.com](mailto:fengleheart@hotmail.com)**

**S. L. CARTER**

**PROFESSIONAL PAINTER AND  
 DECORATOR**

---

**PLASTERING, TILING, COVING AND  
 GLAZING**

**CLEOBURY MORTIMER**  
**TEL: 01299 272868**  
**MOBILE: 07815 483 029**



W. BROWN

PLUMBING & HEATING

Registered  
Heating  
Business



## OIL BOILER ENGINEER

- Boiler servicing & repairs
- Worcester Bosch installer
- General plumbing work

07974121297    billejbrown75@gmail.com    @wbrownplumbingheating

## SEPTIC TANK EMPTYING

**CHARLES MAIDEN**

EST 1988

**Waste Disposal Ltd**



Routine & Emergency emptying of Domestic & Commercial:-

- SEPTIC TANKS
- TREATMENT PLANTS
- ALL SEWAGE SYSTEMS
- BLOCKAGE CLEARANCE
- GREASE TRAPS

Throughout Herefordshire, Shropshire & Worcestershire.

Call us now for your free quote.

**01885 482305**

**info@charlesmaidenbromyard.co.uk**

**www.charlesmaidenbromyard.co.uk**

**Booton Brothers**



**Construction**

**Rich: 07445298747**

**Mike: 07853225401**

**bootonbrothers@outlook.com**

**All building work undertaken**



# Cleobury Mortimer Golf Club

At Cleobury Mortimer Golf Club we believe that a really enjoyable golf day takes more than just a great golf course. We make sure that your whole experience, from the friendly welcome in the golf shop to your drinks and meal in our relaxed clubhouse, is all part of a day you'll remember.



## Everyone Welcome

**Membership available.**

Just some of the many benefits of joining Cleobury Mortimer Golf Club

- Access to full length 27- hole golf course
- Opportunity to achieve and maintain a handicap
- Family, Friendly Environment
- Playing opportunities at all times of the week
- A range of competitive opportunities
- Open dawn to dusk 363 days a year.

*We look forward to meeting you at Shropshire's friendliest golf club.*



☎ 01299 271 112 (ext 1)

✉ [pro@cleoburygolfclub.com](mailto:pro@cleoburygolfclub.com)

🌐 [www.cleoburygolfclub.com](http://www.cleoburygolfclub.com)

## Following in Father's Footsteps

The southern French coastline in August is generally considered a delightful place but it wasn't like that in 1944. Anticipating the success of the Normandy landings, Allied planners had agreed on a separate and simultaneous operation to invade the south of France and create a pincer movement to expel the German forces from the whole country. However, a shortage of shipping resulted in a two month delay. The operation was originally called 'Anvil' but this was changed to 'Dragoon' not long before it was executed on 15th August. The operation is now part of French and US history but seems to have been almost completely forgotten in the UK.

The ground troops comprised US and French forces although British paratroops took part in an airdrop to secure a strategic town 10 miles inland. The main British contribution was from the Royal Navy which provided over 200 warships and numerous support vessels. The RN vessels included a battleship, 7(!) aircraft carriers, 11 cruisers, 32 destroyers and numerous smaller vessels including 20 LCI(L) (Landing Craft Infantry (Large)). These were seagoing craft around 160 feet long and capable of carrying 2-300 troops. They had a shallow draft and were designed to run up and ground on the beach. They then lowered two ramps to allow the troops to land without getting their feet too wet. One of these, LCI(L)278, was commanded by my late father and transported around 200 members of the 142<sup>nd</sup> Regiment of the US 36<sup>th</sup> (Texas) Infantry division.

So, in June 2023, my son and I, armed with my father's 'Top Secret' map from the day and his photos of the landing, visited St Raphael in an attempt to find the spot where he hit the beach. This was complicated by the fact that, on the day, the intended landing beach was heavily mined and defended resulting in the loss of several ships. As a result, the naval commander ordered the flotilla to land at an alternative site four miles to the east which took the new destination off of the edge of the operational

map. Our first port of call was the memorial to the landings situated just behind that beach and, to our amazement, one of the large photos displayed around the memorial was virtually identical to one taken by my father on the day. These both showed a large building just inland (now demolished) which was a brickworks so a task which we thought might take days, was achieved in about 30 minutes.

A further stroke of luck, courtesy of the power of Facebook following a post from my son asking for information, resulted in a meeting the next day with the organiser of this year's 80<sup>th</sup> anniversary commemoration. Interestingly, he thought we were from the US and wasn't aware of the extent of the UK involvement despite having written a book on the area and its history. We showed him my father's map which intrigued him as he had not seen a copy before and he invited us to the commemoration events in 2024. The next couple of days were spent touring the various beaches and looking at the remains of the defences. One mystery remains: another photo noted by my father as taken on the day, shows his ship landing US troops in a rocky inlet which does not resemble any of the beaches we saw.

On our return home, we continued to investigate the operation and I started the apparently simple process of inquiring whether there would be a UK presence at the main event. Oh dear. Some months went by trying to find an appropriate person within the MoD and resulted in a number of unanswered messages and /or buck passing. Eventually, in desperation, I contacted our embassy in Paris and got a helpful response and a (half) promise that there would be UK representation. Following this, more silence ensued and when I sent a reminder, I was told that my contact had moved on and further enquiries resulted in me being told, seven days before the event, that no-one would be coming....

Next month: What happened then and did anyone turn up on the day?

*Steve Todd*



CONSERVATORY  
INSULATION SOLUTIONS

Worcestershire based

Special offer:  
Save 25%  
+ 0% VAT

*Is your conservatory too hot in the summer ?*

*Is your conservatory too cold in the winter ?*

- Warmer in the winter
- Cooler in the summer
- Normally fitted in just 1 day
- FREE in home quote
- Year round use of your conservatory
- VAT FREE GOVERNMENT APPROVED INSULATION

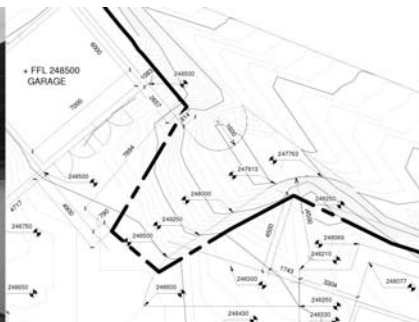


**EXTRA 10% discount for**

NHS / Current & Retired | Blue Light Card Holders | Saga Members

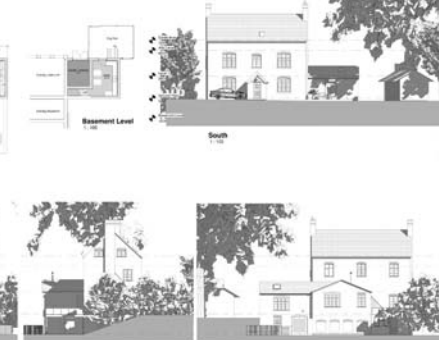
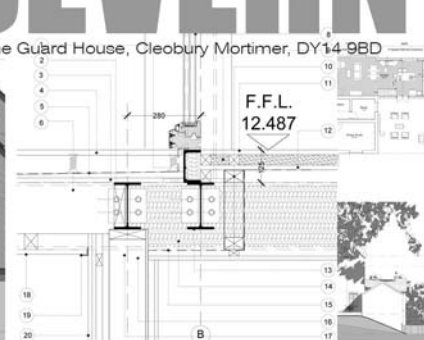
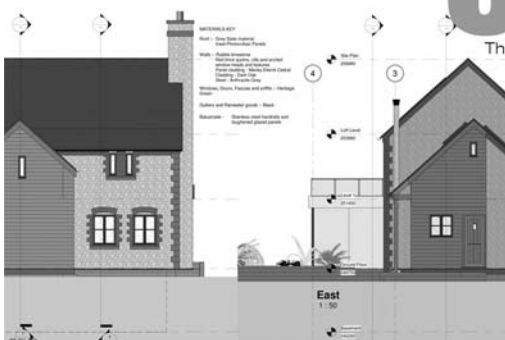
**Freephone: 0345 5480078**

[www.conservatoryinsolutionsolutions.com](http://www.conservatoryinsolutionsolutions.com)



**SEVERN**  
architects

The Guard House, Cleobury Mortimer, DY14 9BD



We are a friendly Shropshire based architectural practice with plenty of experience in all kinds of residential projects large and small. Using the latest 3D software package and technology we can turn your virtual dream home into a reality.

Contact us now on 07825 759484 or email  
[julie@severnarchitects.co.uk](mailto:julie@severnarchitects.co.uk)  
for your consultation

- Our Architectural Design Services include
- Design & Feasibility Studies
  - General project Advice
  - 3D Modelling
  - 2D CAD Drawing
  - Planning Advice and Submissions
  - Building Regulation Applications
  - Tender & Construction Drawings
  - Contract & Project Management

**RIBA**

Chartered Practice



## **PETSMAX, SOMETHING SPECIAL**

The place was attracting interest long before the doors were open for trade. The shopfront looked like the sedum roof on Cleobury Country Centre in Love Lane. That original cost quite a few bob, but this High Street version was planted by Hannah and Kristian of PetsMax, the small shop where Fiona traded for so many years. The newcomers wanted something different and as they planted it themselves you can bet it was a good looking idea at bargain price. No fools, these two.



*Kristian and Hannah, the friendly folk behind PetsMax.*

They know the pet trade very well, enough to avoid some of the famous brands whose contents don't justify the price asked. They have built a strong wholesale business on quality at an affordable price. Now they are setting about building their own chain of retail pet food shops under the PetsMax brand name. This first branch is small, but their next one in Stourport is an impressive 6,000 square feet, spread over the two floors of an old bank building. And as a wholesaler they have a warehouse at Clows Top where

they can get whatever of their range you need very quickly.

Hannah will be running the Cleobury shop initially and they'll be looking to recruit for this branch and the bigger Stourport one. Hannah is on 07533 589 762 and the overall sales side is on [sales@petsmax.co.uk](mailto:sales@petsmax.co.uk)

## **CLOWS TOP VICTORY HALL**

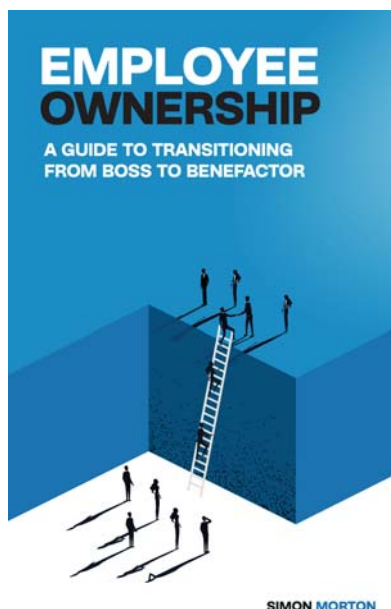
Summer is well and truly over which means we are now into the autumn run up to Christmas. So here is some of what's on.

**JUMBLE SALE.** Saturday 12th October. Doors open 1.30pm. 20p entrance.

**BARN DANCE.** Saturday 19th October. 7.30pm adults £12 child 16 and under £5.

*Steve Woodson*

## **SIMON'S NEW BOOK**



Simon Morton, whose garden stories grace these pages every month, has a new book out this month. He's the best man to tell you all about it:

A bit of background: I sold my business, Eyeful Presentations

([www.eyefulpresentations.com](http://www.eyefulpresentations.com)), almost two years ago. What makes this story special is that I sold the business to its employees. This employee ownership approach is gaining momentum across the UK as more business owners look for ethical ways to cash in while supporting the people who helped make the business successful.

The book, "Employee Ownership: A Guide to Transitioning from Boss to Benefactor," is a practical guide for business founders on how to ensure the process is as smooth and beneficial as possible for everyone involved, especially the employees. I've drawn from my own experience to simplify the complex aspects and make it both readable and actionable. As you can imagine, it's filled with stories that bring the topic to life...

The book will be available on Amazon, Apple Books, and as an audiobook from mid-August.

*Simon*

## **RICHIE AT THE REGAL**

This sounds good. On Friday the 27th, the Regal at Tenbury Wells offers an evening with Malcolm Pitt, presenting the music of Lionel Richie. It's the show he's performed for ITV's 'Sunday at the Palladium' and the BBC's Graham Norton Show. The show starts at 7.30 and if you like nostalgia and love songs, this will be a real treat.

# DO YOU ENJOY DRIVING?



Join the team and experience the satisfaction of knowing you have helped make a difference to someone's life.

Volunteer with our friendly community transport service.

Drive your own vehicle, for which there is a mileage reimbursement.

Times to suit you!

Discuss joining our team by telephoning **01584 233131**

or email [admin@temewheels.org.uk](mailto:admin@temewheels.org.uk)

Website: [temewheels.org.uk](http://temewheels.org.uk)

**We are open from 9.00am - 1.00pm Monday to Friday**

**We look forward to hearing from you!**



Registered Charity No. 1193641

## KIDDERMINSTER SELF STORAGE AND REMOVALS



### STORAGE

Free insurance . Flexible Terms  
Fixed Price Guarantee . No hidden costs

### REMOVALS

Professional Removal Service  
Est. over 25 years

### PACKAGING MATERIALS

Boxes, Bubblewrap, Tape Etc. for sale  
Free local deliveries on orders over £20

**01562 744088**

[www.kidderminsterselfstorage.co.uk](http://www.kidderminsterselfstorage.co.uk)

Unit 11 Finepoint Way, Stourport Road, Kidderminster DY11 7FB  
[info@kidderminsterselfstorage.co.uk](mailto:info@kidderminsterselfstorage.co.uk)



# EVERYTHING INTERIOR UPHOLSTERY

## REUPHOLSTERY SERVICES:

- AUTOMOTIVE
- CARAVANS
- CAMPER VANS
- TRADITIONAL & MODERN
- COMMERCIAL & BESPOKE
- DOMESTIC
- CARPET & UPHOLSTERY CLEANING  
*(in partnership with WE GLEAM)*

**OVER 30 YEARS EXPERIENCE**



## CONTACT US TODAY

Unit 19 Old Station Business Park, Cleobury Mortimer, DY14 8SY  
07961 712683 / 07961 792103  
[www.everythinginterior.co.uk](http://www.everythinginterior.co.uk)  
email: [everythinginterior@outlook.com](mailto:everythinginterior@outlook.com)



Bespoke framing and mounting for:

- Artwork
- Photographs
- Canvases



## The Framing Studio Cleobury Mortimer

Paul Serrell-Cooke  
07791 378240

*Bringing artwork and images to life*



**LUDLOW  
SALVAGE**

~ Est 2017 ~

Reclaimed Building Materials  
and Architectural Antiques

Station yard, Station road,  
Woofferton, Ludlow SY8 4AW



**07805 312168**



**ludlowsalvage@gmail.com**




**/ludlowsalvage**



**/ludlowsalvage**

**WWW.LUDLOWSALVAGE.CO.UK**

**LUDLOW  
FIREWOOD**

~ Est 2019 ~

Suppliers of Premium Grade Ready  
to Burn Firewood, Beautifully Crated  
and Delivered to Your Door



**07949 318014**



**ludlowfirewood@gmail.com**



**/ludlowfirewood**



**/ludlowfirewood**

Station yard, Station road, Woofferton, Ludlow SY8 4AW

**WWW.LUDLOWFIREWOOD.COM**

Available in Barrow bags and  
nets for all your access  
requirements.

## CLEOBURY SEAFOOD & FREEZER CENTRE

6, Newhouse Farm, Tenbury Road, Cleobury Mortimer DY14 8RD

For enquiries or to place an order, phone Ann 07711875553

### Top most popular products

*Fish Cod, Haddock, Kippers, Sea bass, Red Snapper, Tuna, Swordfish, Salmon & more*

*Seafood Calamari, Whitebait, Scallops, Raw King Prawns, Fish pie mix*

*Bennet Ice Cream*

*Curries and Mr Daves Curries*

*Dairy Cream Cakes Éclair Finger Donut, Scones, Apple Turnovers*

*Frozen Fruit*

*Blueberries, Blackberries, Blackcurrants, Summer Fruits, Raspberries & more*

*Hot Puddings Treacle, Sticky Toffee, Chocolate, Jam*

*Suet Puddings, Steak and Kidney and Steak and Ale*



**Gluten Free, Vegan, Dairy Free, Vegetarian**

I have a new Website under construction, and will be ready very soon

Opening Times Closed Monday, Tuesday to Friday 9.30 to 4.30 Saturday 9.30 to 12.30

# ONE STOP ROOFING

## The Flat Roof Specialists



- Rubber, Fibreglass & Felt
- Re-pointing & Chimney Repairs
- Fascias & Guttering



**Take advantage of our offer:** Replace your flat roof Making EPDM (rubber) your choice for a long lasting, weatherproof & high slip resistant membrane, with a lifespan of 50 years, **get it for the same price as felt**, which only carries a 10 year guarantee!

Replace your flat roof with EPDM (rubber) & add a skylight or lantern, giving extra light to your room starting **from as little as £400!!**

**Freephone 0800 0855277 \* 07538 471274**

**Www.onestop-roofing.co.uk**

**onestoproofinguk@gmail.com**

Family business est. 35 years.  
All repair work undertaken

Proud members of  
**Checkatrade.com**  
Where reputation matters

## Community Contacts for Clarion Readers

CEMETERY ADMINISTRATOR	Theresa Ray	07703 965 064	<a href="mailto:theresa.ray@cleobury.org.uk">theresa.ray@cleobury.org.uk</a>
CLEOBURY COUNTRY CENTRE		01299 272300	In Love Lane, 9 to 5 Mon to Fri.
CLEOBURY DENTAL PRACTICE		01299 271747	<a href="http://www.cleoburydental.co.uk">www.cleoburydental.co.uk</a>
CLEOBURY CARERS	Michelle	01743 341995	<a href="mailto:carerssupport@shropshire.gov.uk">carerssupport@shropshire.gov.uk</a>
CLEOBURY COMPASSIONATE COMMUNITIES	Katja Jones	07966 080111	Tuesday and Thursday at the Medical Centre
CLEOBURY LIBRARY		01299 272301	Open 9 to 7 Mon, 9 to 5 Tues/Fri, 10 to 1 Sat.
LOCAL POLICE			
CLEOBURY MORTIMER SCOUTS	Lowri Hughes		<a href="mailto:cleoburybeavers@gmail.com">cleoburybeavers@gmail.com</a>
CRIMESTOPPERS	Free Police contact	0800 555 111	Talk in confidence, to report any crime.
DOMESTIC VIOLENCE HELPLINE		0800 783 1359	Women's Aid, 24 Hour support:
HOME FROM HOSPITAL	Age UK	01584 878046	Help over the first weeks back home
MARKET HALL	Sam	07385 698574	<a href="mailto:markethall@cleobury.org.uk">markethall@cleobury.org.uk</a>
MEDICAL CENTRE		01299 270209	Out of surgery hours, use the Shrop Doc Service.
SHROPHIRE DOCTORS		111	Service available evenings and weekends
THE MEN'S SHED	Pete Blackburn	07776 243 584	<a href="mailto:petblack@me.com">petblack@me.com</a>
THE PHARMACY		01299 270219	Closes for half day on Saturday. Delivers
ST ELIZABETH'S R.C CHURCH	Angela Flowers	01299 270318	Sunday Mass at 9.00am
NIGHTINGALE NURSING FUND	Rosemary Abbiss	01746 718451	
TOWN COUNCIL (Clerk)	Dorothy McBride	01299 271154	
St MARY'S YOUTH PROJECT	Mark Greaves	07828 116810	<a href="mailto:mark.stmarys@live.co.uk">mark.stmarys@live.co.uk</a>
SHROPSHIRE COUNCIL		0345 678 9000	
S. SHROPSHIRE YOUTH FORUM		01584 874922	
VOLUNTARY CAR SCHEME	Mandy Smith	01299 666119	
WASTE DISPOSAL		0345 678 9007	The contractor is Veolia
WATER SUPPLY EMERGENCIES	Severn Trent	0800 783 4444	
NEWLIFE CHURCH	Pastor E Stirrup	01562 630595	Sunday services at 10.30





## Our Services



**SOLAR PV**



**EV CHARGERS**



**AIR SOURCE  
HEAT PUMPS**



**GROUND SOURCE  
HEAT PUMPS**



**BATTERIES**



**VENTILATION**



**UNDERFLOOR  
HEATING**



**RADIATORS**

## About us

EnergyZone is one of the largest renewable energy companies in the Midlands, having provided domestic and commercial sustainable energy solutions for over 20 years.

Based next to Hobsons Brewery in Cleobury Mortimer, we are your local experts in renewable and low carbon energy.

The current energy crisis has been incredibly eye-opening as we come to realise how reliant we are on other countries for fuel. Wouldn't it be nice to become more independent and less reliant on the volatile energy prices... well, that's where we can help!

### What can EnergyZone Offer?

- With over 130 years combined experience, we are keen to help with all your energy enquiries and deliver impartial advice.
- Totally free desktop quotes for Solar PV and Heat Pump systems completely unique to your property to show you exactly how much you could save.
- Self-consumption gadgets to help you utilise all of your generated energy. Whether its a Smart Electric Car Charger, Immersion Diverters or Battery Storage Units, we can help you become more independent from the grid.
- Ensure your heating is as efficient as possible, through underfloor heating installation, radiator upgrades and smart hot water cylinders.
- Advice on all Government Grants and Incentives.
- Local support with annual servicing through our in-house EZCare package.

**Get in touch today to start renewing your energy!**

For your peace of mind, EnergyZone has the following accreditations:



01299 270011



[sales@energyzone.co.uk](mailto:sales@energyzone.co.uk)



## Ludlow Motors

### Vauxhall

The **New Corsa** is available with a petrol or fully electric engine. A next-generation 51kWh battery with all-electric range of up to 246 miles.



The **Astra 100% Electric**. 114kW Electric motor (158PS) with 54kWh battery. 258 miles of Electric range. 0 grams of CO2 emissions.

**Mokka Electric** is powered by a next generation 50kWh lithium-ion battery. It'll take you up to 209 miles (preliminary WLTP) on a single charge.



### Suzuki

Enjoy the power of an 83 HP engine, with a CO2 output as low as 106 g/km (WLTP combined). When you choose a **Swift** with mild hybrid, a little goes a long way.



Designed for all conditions, and we don't just mean the weather. From school runs to weekend getaways, the **Vitara** takes you anywhere you want (or need) to go.

Our latest **S-Cross** comes with the choice of either Mild Hybrid or Full Hybrid technology, supported by a dynamic and responsive petrol engine.



### Service

Routine servicing is an important part of keeping your vehicle at its best condition, delivering a top driving experience. Drive confidently knowing your vehicle is working at its best with us.



**We service all popular makes & models.**

**All Makes & Models Serviced from £199. Fully Electric Servicing From £99.**

Spread the cost with a Service Plan from £17.99 per month.

### Motability Scheme

Nothing should stop you living a full life, with independence and freedom. The Motability Scheme opens the doors to those things, with worry free motoring that helps you to keep moving.



Motability from Worcester Car Sales - 400523 means:

**The everyday freedom of having everything included.**



Your insurance, servicing, maintenance and full breakdown cover included.



# The Cleobury Clarion Social Calendar for September

---

Sun. 1st. 10.00 CMFA Country Walk starts from the Parish Church.	PAGE 13
Tue. 3rd 2.00. Carer Support Group meet at St Mary's Place, Love Lane.	
Wed. 4th GARDEN AND FOOD WASTE BINS EMPTIED TODAY	
6.00 to 7.00 Late Night at the Food Bank, Market Hall	
7.30 Whist Drive at Doddington village hall	
Sat. 7th. Nature photography walk on Clee Hill with Julian Cartwright.	PAGE 15
6.00 'Beer and Tittles' Night, Hopton Wafers village hall.	PAGE 7
Sun. 8th. 5.00 Re-opening of Melville Chapel at Oretton	PAGE 17
Tue. 10th 7.30am The Breakfast Club meet at the Golf Club when Francis Engleheart speaks	PAGE 9
Wed. 11th. GENERAL HOUSEHOLD WASTE BINS EMPTIED TODAY	
10.00am CMFA Walk for Health starts from Blackstone Car Park, Bewdley.	
10.00. CoCo Coffee Morning, Market Hall	
7.00. Royal British Legion AGM, Sports and Social Club.	PAGE 5
Thu. 12th. 7.30 The Borders Classic Bike Club meet at the Blount Arms.	
Fri. 13th 10.30 Coffee Morning at Doddington Lodge; visitors most welcome.	PAGE 33
7.00 Royal British Legion Harvest Auction, Sports and Social Club	PAGE 5
8.00 Bingo Night at Doddington village hall	
Sat. 14th. 3.00 Neen Savage Applefest in the village hall.	PAGE 5
Clee Hill walk between its four churches, with Rev Mark Daborn	PAGE 15
Mon. 16th. 7.30 The Reading Group meet at the town library.	
Wed. 18th GARDEN AND FOOD WASTE BINS EMPTIED TODAY	
7.30. Whist Drive at Doddington village hall.	
Sat. 21st. 9.00 Cleobury Country Farmers Market is at the Parish Church	
2.00 Afternoon Tea at Hopton village hall, fund raising for MacMillan Cancer Support.	PAGE 7
Sun. 22nd. 10.00 The Borders Classic Bike Show is at Lacon Childe School, Love Lane	
Wed. 25th. GENERAL HOUSEHOLD WASTE BINS EMPTIED TODAY	
10.00 Walking for Health step out for a local walk.	
10.00 CoCo Coffee Morning at the Market Hall	
10.00. Coffee Morning at Doddington village hall.	
7.00 Royal British Legion informal gathering at The Talbot Hotel	PAGE 5
Fri. 27th. 8.00. Bingo Night at Doddington village hall.	
Sat. 28th. 10.00 Walking for Health steps out from the Market Hall.	PAGE 13
Sun. 29th. 6.30 Harvest Festival at Melville Chapel, Oretton.	
Mon. 30th. 7.30 Nearly Dead Poets' Society meet at the library.	PAGE 5
<b>LOOKING FORWARD TO OCTOBER:</b>	
Wed. 2nd. GARDEN AND FOOD WASTE BINS EMPTIED TODAY	
7.30. Whist Drive at Doddington village hall	
Wed. 9th 12.30 Soup lunches start again at Melville Chapel	
<b>REGULAR EVENTS OF INTEREST;</b>	
Monday: Bingo Night at the Market Hall	
Tuesday: Friendship Club meet at the Parish Hall.	
Thursday: 10.00 Drop-in at Saint Mary's church for a cuppa and chat.	
7.30. Tina Hobin's 'Dance of Life' gentle exercise class at the Market Hall., restarts on September 11th.	





22 Sept 2024 • 10-4.30

# Borders Classic Bike Show

75 Triumph MCC  
Anniversary

Special guest!  
Harley-riding Bishop of Hereford

Enjoy your ride through  
beautiful Shropshire for a  
Bike-tastic day out!

- Autojumble
- All Day Breakfast
- Camping available
- Tickets £5 on gate

Lacon Childe School, Cleobury  
Mortimer DY14 8PE  
Jim Reynolds 01299 270642  
07410 997 212  
Steve Todd 01299 271639

Supporting Air Ambulance & Lacon Childe School

DEADLINE FOR THE OCTOBER CLARION : SEPTEMBER 22nd  
Editor and Advertising Sales: Jim Reynolds, 4 Childe Road, Cleobury  
Mortimer, Shropshire, DY 14 8PA  
Tel: 01299 270642 Mobile: 07410 977 212 E:[editor@cleoburyclarion.co.uk](mailto:editor@cleoburyclarion.co.uk)  
Web: [www.cleoburyclarion.co.uk](http://www.cleoburyclarion.co.uk)  
Printed by Badger Print. Tel: 01952 730511

---

Collect your Clarion in Cleobury from: Londis, Cleobury Cafe, Severn  
Hospice Shop, Mid Counties Co-op, Purslows, The Library.

And out in the county:

The Blount Arms, Heath Farm Meats, Clee Hill Stores, Clows Top Store, The  
Colliers Cafe, Sun & Slipper, Mamble; Hopton Bank Service Station; Ludlow  
Library; Fighting Cocks, Stottesdon; Duck Inn, Chorley; Live & Let Live,  
Neen Sollars; Eagle & Serpent, Kinlet; Parker Motors, Kinlet.

Also from the parish churches in: Cleobury Mortimer, Bayton, Doddington,  
Hopton Wafers, Neen Savage, Neen Sollars and Stottesdon.

---

**Paul Harding**



**Tree Services**

- Tree surgery and felling
  - Woodland thinning & maintenance
  - Hedge trimming & grass cutting
  - Supplier of hardwood logs, kindling and garden bark
- NPTC certified fully insured. Domestic and commercial work undertaken.  
Tel 01584 890 993 Mob 07970 878 224

**BILL'S QUALITY METALWORK**  
**5 GREENFIELD ROAD, CRAVEN ARMS, SY7 9QU**  
**Manufacturing Made to Measure Gates and Railings**  
**~Balconies and Staircases, Handrails, Carports,**  
**Structural Steelwork and Mobile Welding Service.**  
**Phone Bill on 07973 248 016 or 01588 673 914**  
**Office for a free quote**



---

### How to contact the Town Council

Telephone: 01299 271154 or 07483 112290

Email: [council@cleobury.org.uk](mailto:council@cleobury.org.uk)

Speak to us at the Councillor Surgeries held on the third Saturday of every month in the Market Hall.

### Councillor Surgery

Cllr Tysall, Cllr Abbatiello and the Clerk attended the monthly Councillor Surgery held in the Market Hall, alongside the Farmers Market, on Saturday 17<sup>th</sup> August. Comments regarding overgrown hedges, High Street maintenance and the Post Office will be followed up with the relevant parties. If you have an issue you want to raise, you can contact the office on the details above or drop into the next monthly Councillor Surgery on Saturday 21<sup>st</sup> September 2024.

### QE11 Park improvements

We have ordered some new benches for the QE11 Park which will be delivered and installed later this year. The benches will be made from 100% recycled materials as part of our commitment towards being more environmentally friendly. More seats and picnic benches will be purchased next year.

### Hedge Maintenance

Now that we are into September, could we politely ask residents to trim back their boundary shrubs and hedges where they are adjacent to footpaths and pavements, if they have not already done so. We receive a number of complaints throughout the year about hedges being overgrown and whilst we understand the reluctance to cut hedges during bird-nesting season, they can be trimmed for safety reasons at any time.

Trimming back shrubs and hedges adjacent to public paths helps ensure the safety of pedestrians, who in some cases are having to walk in the road to avoid branches. Ideally, the hedge would be taken back to the inner edge of the pavement to give maximum pedestrian access and safety.

### Highway Maintenance

Please note that any issues with public highways and footpaths should be reported to Shropshire Council. This can be done by telephone – 0345 678 9000, email – [customer.service@shropshire.gov.uk](mailto:customer.service@shropshire.gov.uk), online through Shropshire Council's website [www.shropshire.gov.uk](http://www.shropshire.gov.uk) or use the Fix My Street app.

### Councillor Vacancy

The Town Council currently has a vacancy for a Councillor. If you have good local knowledge and are interested in our community, have good communication skills, are keen to work with community partners and can attend monthly Town Council meetings then please consider joining us. For more information, please contact us on the details at the top of this page.

### Grants available to community groups

The Town Council has some funding available to support local community groups based in Cleobury Mortimer. Grants are available for activities or for equipment. If you have a project or activity which would benefit from some financial support, please contact the Town Council for further information and an application form.

### Dates for your Diary

Next Council Meeting – Monday 2<sup>nd</sup> September 2024 at 6.30pm, at the Cleobury Country Centre.

Councillor Surgery – Saturday 21<sup>st</sup> September 2024, from 10am – 12noon, at the Market Hall.



# HOBSONS BEER OF THE MONTH

Available all year round in keg, we're excited to bring Evolution into its next evolution as a limited cask brew this September!



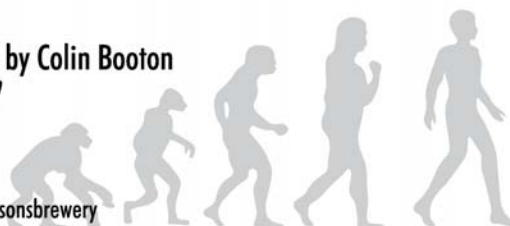
EVO is a 4.2% craft pale ale, brewed with Hersbrucker, Cascade and Chinook hops. Expect a hoppy character with zesty flavours and floral fruity aromas, before a rounded smooth finish.



Keep an eye on Hobsons socials for a list of all pubs stocking Evo this month, including Cleobury pubs on our doorstep!



Brewed by Colin Booton



☎ 01299 270837 ✉ beer@hobsons-brewery.co.uk 📱 @Hobsonsbeers 📺 @hobsonsbrewery



## COME AND JOIN OUR TEAM...

### Junior Marketing Manager - Full time

We are looking for an ambitious, team player who is ready for the next step in their marketing career. The ideal candidate will have a recent marketing related degree, 1-2 years experience and a can-do attitude to take on the responsibility of marketing the Hobsons products to both B2B and end consumers through a modern creative marketing mix which champion the brand values and ultimately drives sales.

### Telesales - Part time 16 hrs

We are looking for a customer focused, team player to join the sales department on a part time basis. The telesales role will be responsible for taking and processing orders to meet sales schedules as well as providing office support.

For more details visit [www.hobsons-brewery.co.uk/recruitment/](http://www.hobsons-brewery.co.uk/recruitment/)





# **CLEOBURY**

## FACILITIES INCLUDE:

**Gym**   
**Exercise Classes**   
**Sports Hall**   
**Outside Astro Pitch**   
**Netball**   
**Tennis Courts** 

## CLASS TIMETABLE

MON	9.15 - 10am	CARDIO PILATES & STRENGTH
	6.30 - 7.15pm	BODY PUMP
TUES	9.15 - 10am	YOGA
	10.15 - 11am	YOGA
	6.15 - 7pm	TRX
WED	5.15 - 6pm	PILATES
	6 - 6.45pm	CIRCUITS
THU	6 - 6.45pm	STEP & SCULPT
	7 - 7.45pm	SPIN
FRI	6 - 6.45pm	STRETCH & RELAX

Pre-Booking required for Exercise classes  
Book online or at the Centre

## OPENING TIMES

MON	7.30am - 10am
	10am-12.30pm GP Referral
	3.30pm - 10pm
TUE	3.30pm - 10pm
WED	7.30am - 10am
	4.30pm - 10pm
THU	4.30pm - 10pm
FRI	7.30am - 10am
	3.30pm - 10pm
SAT-SUN	7.30am - 1pm

Pre booking not required for Gym use.  
Induction or Disclaimer required  
in advance of use.



**TEME CLEOBURY**  
 LOVE LANE  
 CLEOBURY MORTIMER  
 DY14 8PE  
**01299 271317**




**DOWNLOAD OUR APP**




[www.teme-leisure.co.uk](http://www.teme-leisure.co.uk)